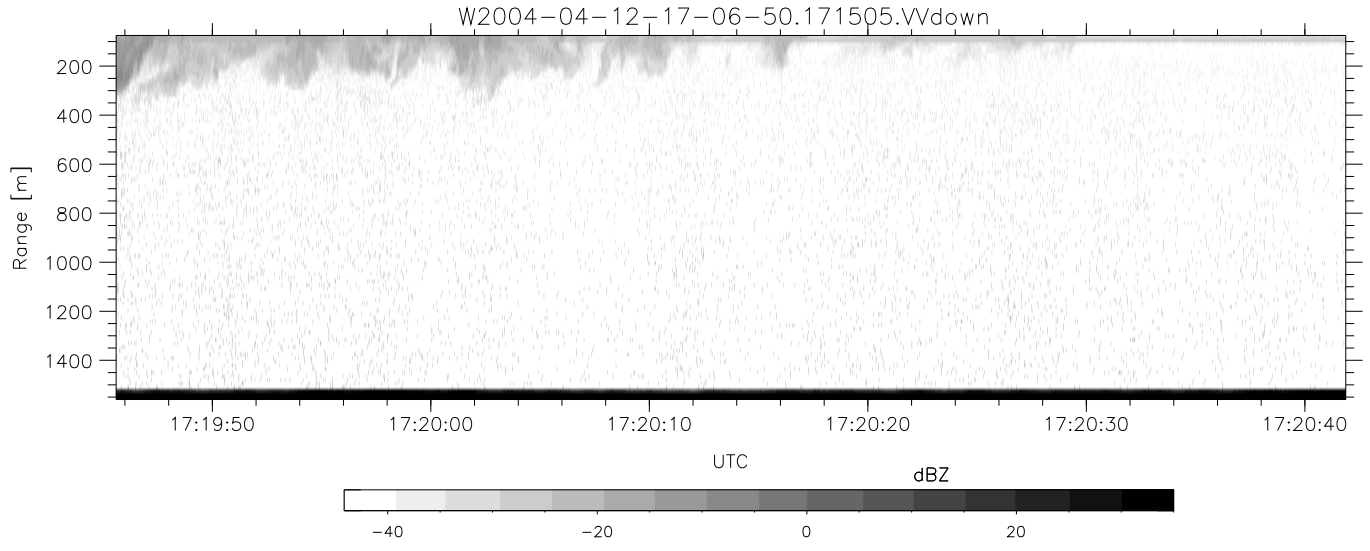
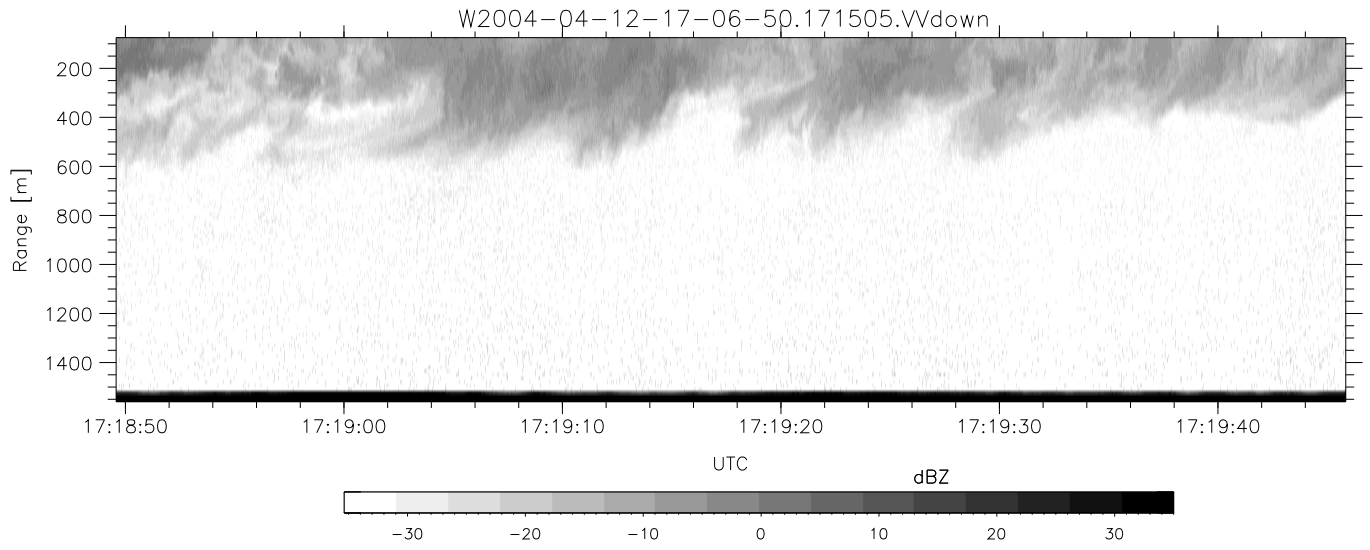
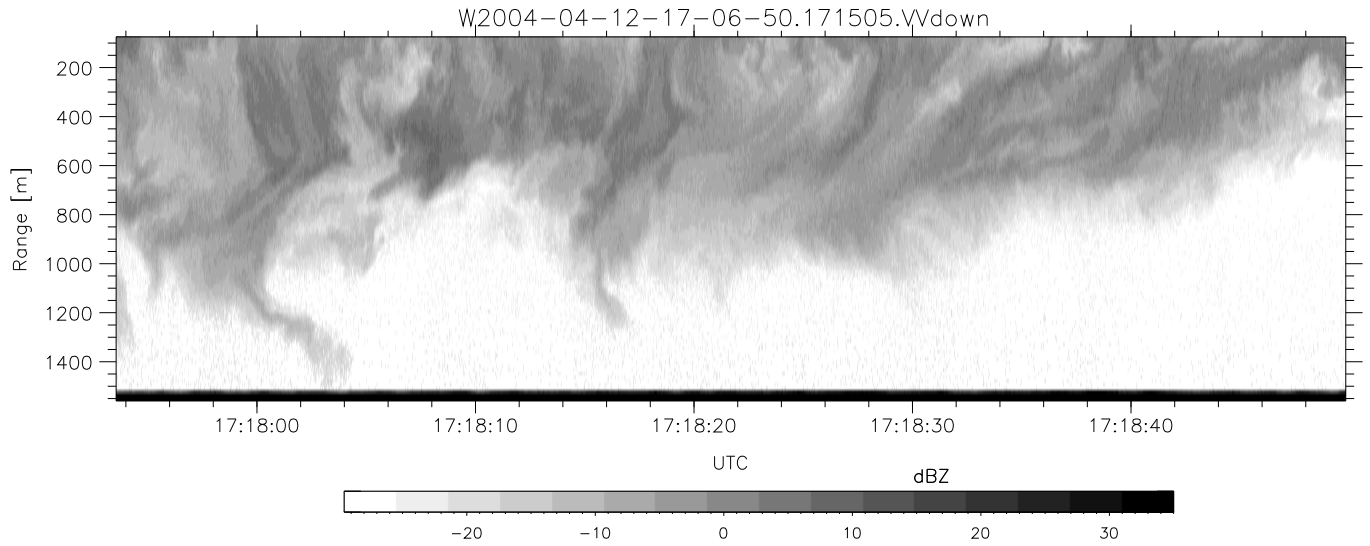


CIFEX 2004 Data (cal/250ns+2.5/100ns-3.5/500ns: 53.0,50.0)

W2004-04-12-17-06-50 - PPMAG4, IRIG:1/0/2  
 UTC: 17:06:49.85 to 17:21:19.92, Dur: 870s  
 TimeLngth: 870.08s, TimeInt: 28ms (35.4pps)  
 TimeCor=-13.0s, PPS(min,max,med): 35,36,35  
 Timeint/DSPdiff(mn,min,mx):28,28,28/28,28,28  
 Prof: 245 to 31090, NumProf(r/t): 13274/30845  
 ProcTime/Recs: 17:15:05-17:21:19/17571-30844  
 ADacqtime: 25ms; DRate: 198.4KB/s; Flags: 0, 0, 0  
 Pulse: 275ns, IFfilt: 5.0MHz; ppPol: HH HV VV  
 TxPol: HHVV, PRF: 20 10 20 10 kHz, NoiseFlg:2,3  
 Range: Delay 75m, Spacing 15m, Gates 100  
 Ave. Pulses: 84, Rng/Prof Aspect@90m/s: 5.9

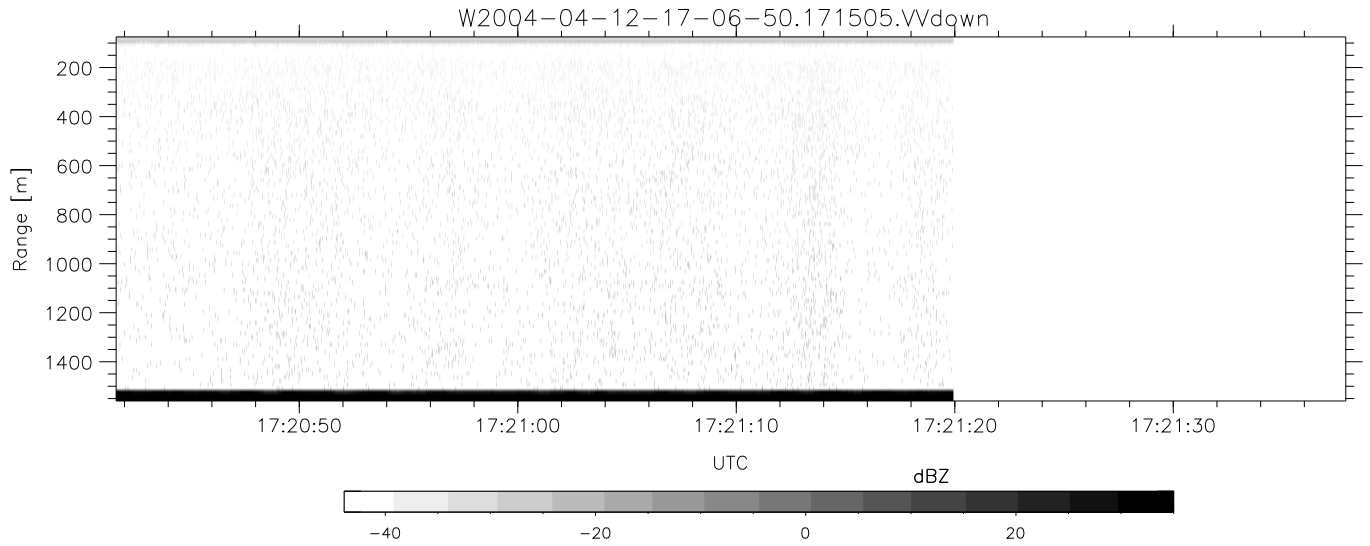
	Min	Max	Mean	Std	Varc%
hhN(dB)	-68.12	-64.97	-66.38	-76.38	10.0
vvN(dB)	-68.30	-64.64	-66.34	-76.27	10.2
hhL(dB)	-21.91	-9.94	-13.47	-19.52	24.8
vvL(dB)	-0.15	6.00	5.93	-6.69	5.5
ppN(m/s)	-12.33	12.21	-0.04	4.15	
ppT(m/s)	-97.44	96.48	-0.29	32.82	
hh/vv(dB)	NaN	35.22	1.47	19.53	6401
vh/hh(dB)	NaN	-26.67	-31.16	-34.07	51.1
hv/vv(dB)	NaN	-34.47	-48.34	-43.89	279.
hnjmp(dB)			-0.12		
vnjmp(dB)			-0.11		



CIFEX 2004 Data (cal/250ns+2.5/100ns-3.5/500ns: 53.0,50.0)

W2004-04-12-17-06-50 - PPMAG4, IRIG:1/0/2  
 UTC: 17:06:49.85 to 17:21:19.92, Dur: 870s  
 TimeLngth: 870.08s, TimeInt: 28ms (35.4pps)  
 TimeCor=-13.0s, PPS(min,max,med): 35,36,35  
 Timeint/DSPdiff(mn,min,mx):28,28,28/28,28,28  
 Prof: 245 to 31090, NumProf(r/t): 13274/30845  
 ProcTime/Recs: 17:15:05-17:21:19/17571-30844  
 ADacqtime: 25ms; DRate: 198.4KB/s; Flags: 0, 0, 0  
 Pulse: 275ns, IFilt: 5.0MHz; ppPol: HH HV VV  
 TxPol: HHVV, PRF: 20 10 20 10 kHz, Noiseflg:2,3  
 Range: Delay 75m, Spacing 15m, Gates 100  
 Ave. Pulses: 84, Rng/Prof Aspect@90m/s: 5.9

	Min	Max	Mean	Std	Varc%
hhN(dB)	-68.12	-64.97	-66.38	-76.38	10.0
vvN(dB)	-68.30	-64.64	-66.34	-76.27	10.2
hhL(dB)	-21.91	-9.94	-13.47	-19.52	24.8
vvL(dB)	-0.15	6.00	5.93	-6.69	5.5
ppN(m/s)	-12.33	12.21	-0.04	4.15	
ppT(m/s)	-97.44	96.48	-0.29	32.82	
hh/vv(dB)	NaN	35.22	1.47	19.53	6401
vh/hh(dB)	NaN	-26.67	-31.16	-34.07	51.1
hv/vv(dB)	NaN	-34.47	-48.34	-43.89	279.
hnjmp(dB)			-0.12		
vnjmp(dB)			-0.11		



CIFEX 2004 Data (cal/250ns+2.5/100ns-3.5/500ns: 53.0,50.0)

W2004-04-12-17-06-50 - PPMAG4, IRIG:1/0/2  
 UTC: 17:06:49.85 to 17:21:19.92, Dur: 870s  
 TimeLngth: 870.08s, TimeInt: 28ms (35.4pps)  
 TimeCor=-13.0s, PPS(min,max,med): 35,36,35  
 Timeint/DSPdiff(mn,min,mx):28,28,28/28,28,28  
 Prof: 245 to 31090, NumProf(r/t): 13274/30845  
 ProcTime/Recs: 17:15:05-17:21:19/17571-30844  
 ADacqtime: 25ms; DRate: 198.4KB/s; Flags: 0, 0, 0  
 Pulse: 275ns, IFfilt: 5.0MHz; ppPol: HH HV VV  
 TxPol: HHVV, PRF: 20 10 20 10 kHz, Noiseflg:2,3  
 Range: Delay 75m, Spacing 15m, Gates 100  
 Ave. Pulses: 84, Rng/Prof Aspect@90m/s: 5.9

	Min	Max	Mean	Std	Varc%
hhN(dB)	-68.12	-64.97	-66.38	-76.38	10.0
vvN(dB)	-68.30	-64.64	-66.34	-76.27	10.2
hhL(dB)	-21.91	-9.94	-13.47	-19.52	24.8
vvL(dB)	-0.15	6.00	5.93	-6.69	5.5
ppN(m/s)	-12.33	12.21	-0.04	4.15	
ppT(m/s)	-97.44	96.48	-0.29	32.82	
hh/vv(dB)	NaN	35.22	1.47	19.53	6401
vh/hh(dB)	NaN	-26.67	-31.16	-34.07	51.1
hv/vv(dB)	NaN	-34.47	-48.34	-43.89	279.
hnjmp(dB)			-0.12		
vnjmp(dB)			-0.11		