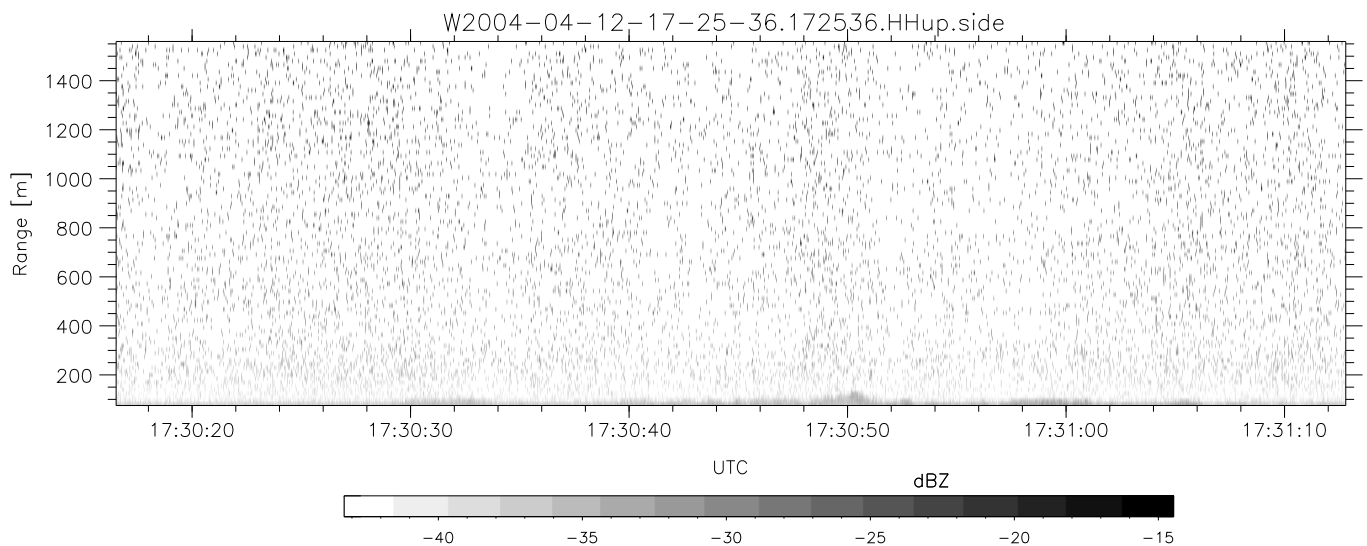
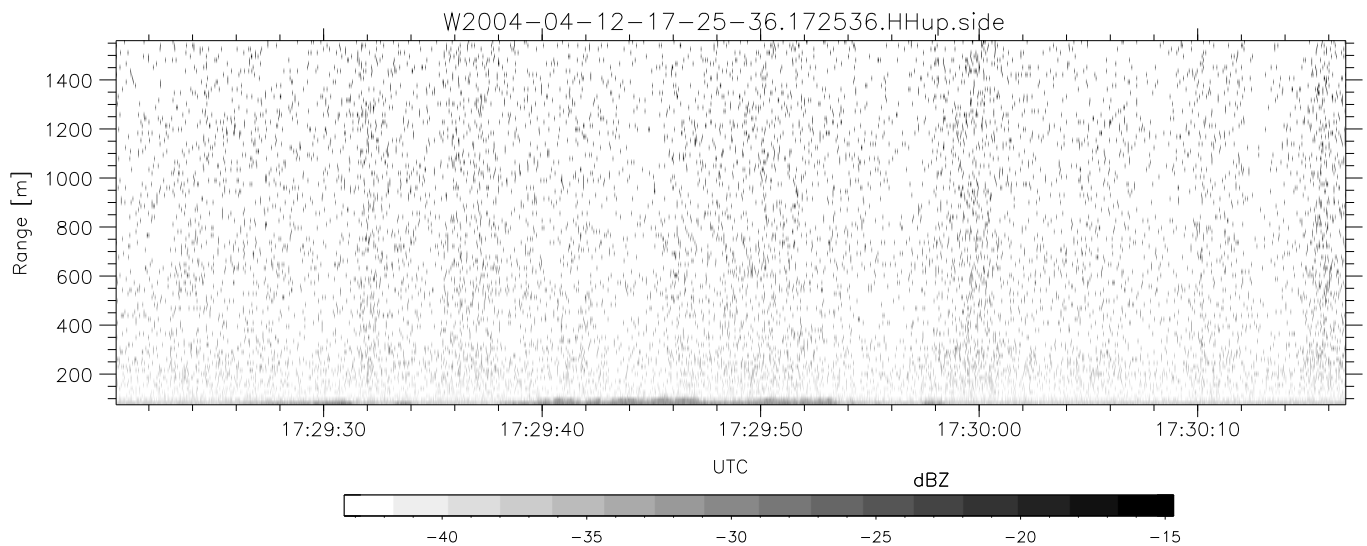
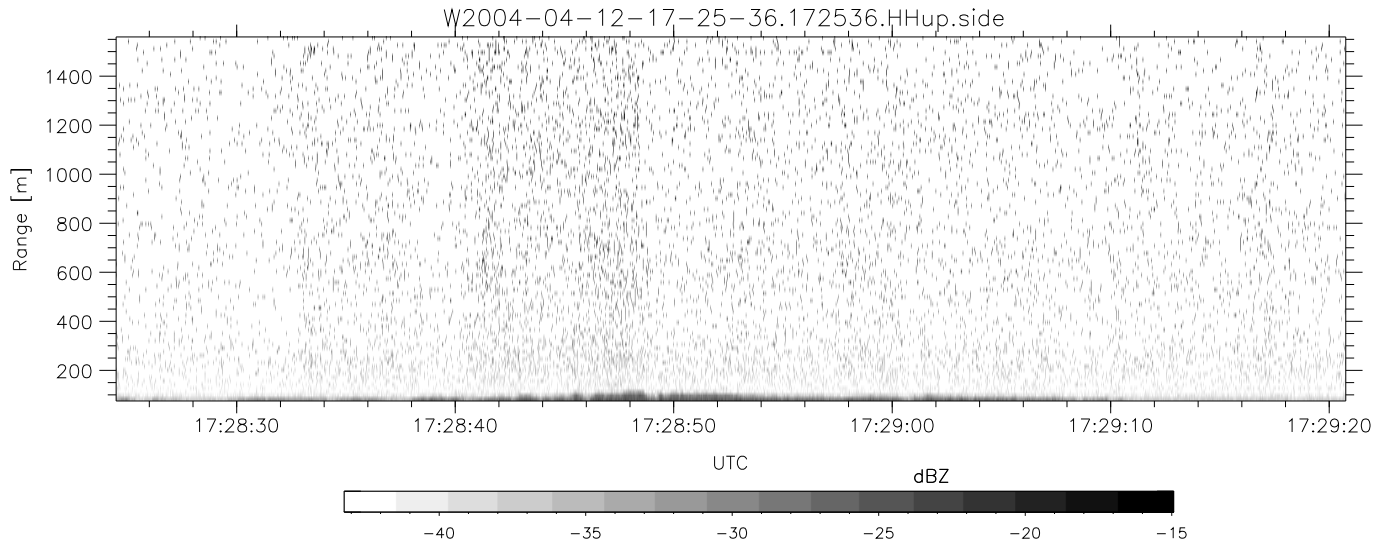


CIFEX 2004 Data (cal/250ns+2.5/100ns-3.5/500ns: 53.0,50.0)

W2004-04-12-17-25-36 - PPMAG4, IRIG:1/0/2
 UTC: 17:25:36.43 to 17:47:15.73, Dur: 1299s
 TimeLngth: 1299.31s, TimeInt: 28ms (35.4pps)
 TimeCor=-13.0s, PPS(min,max,med): 35,36,35
 Timeint/DSPdiff(mn,min,mx):28,28,37/28,28,37
 Prof: 351 to 46412, NumProf(r/t): 17571/46061
 ProcTime/Recs: 17:25:36-17:33:52/0-17570
 ADacqtime: 25ms; DRate: 198.4KB/s; Flags: 0, 0, 0
 Pulse: 275ns, IFilt: 5.0MHz; ppPol: HH HV VV
 TxPol: HHVV, PRF: 20 10 20 10 kHz, NoiseFlg:4,4
 Range: Delay 75m, Spacing 15m, Gates 100
 Ave. Pulses: 84, Rng/Prof Aspect@90m/s: 5.9

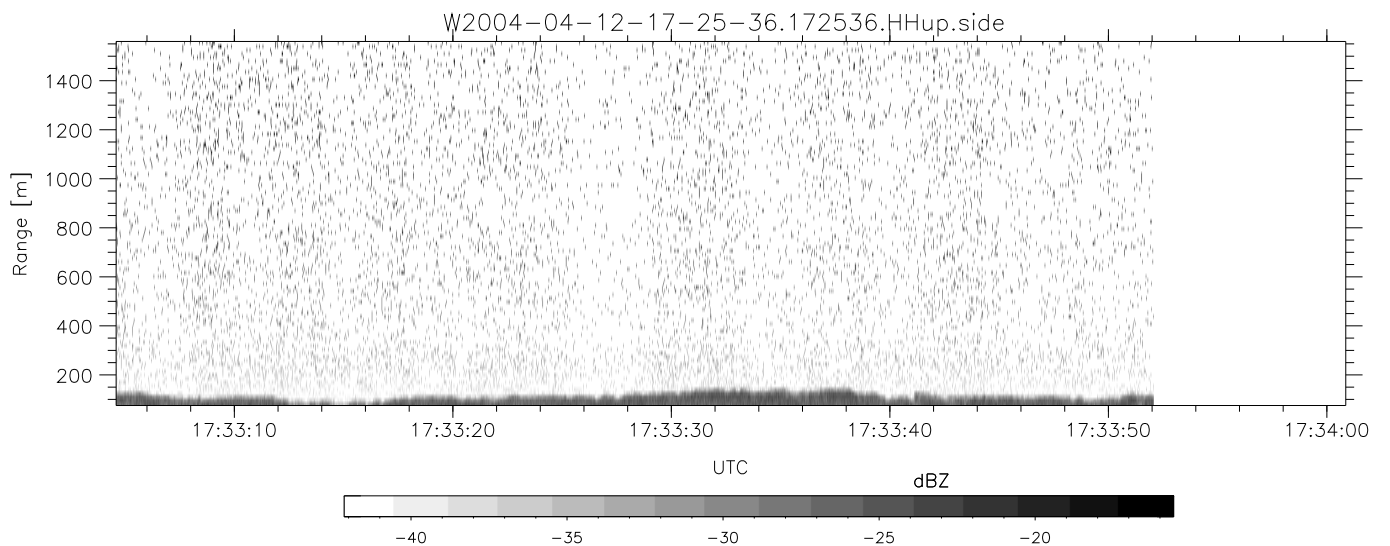
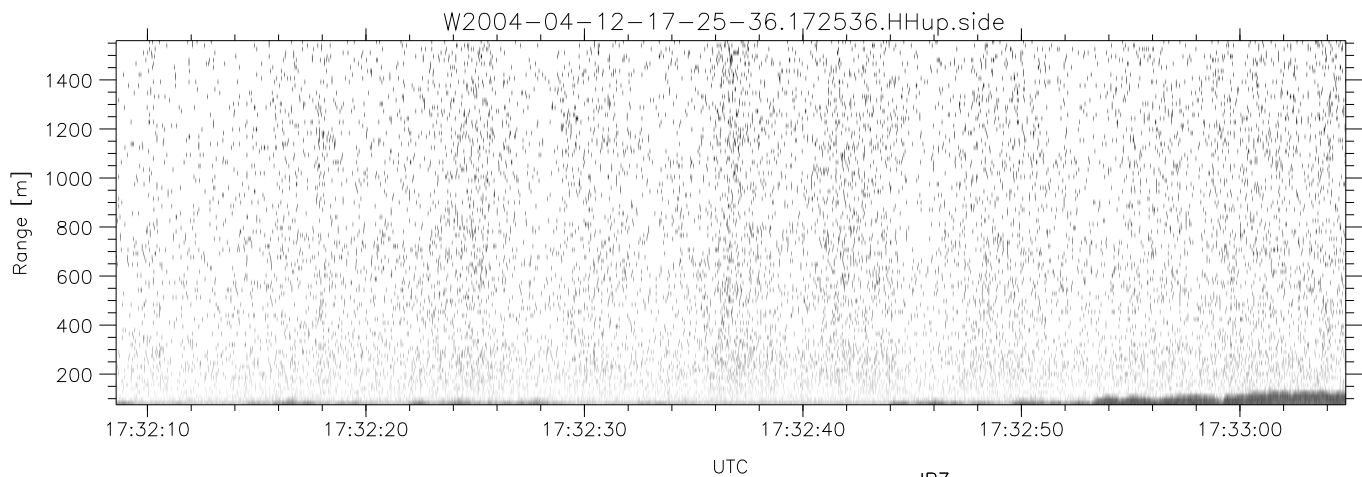
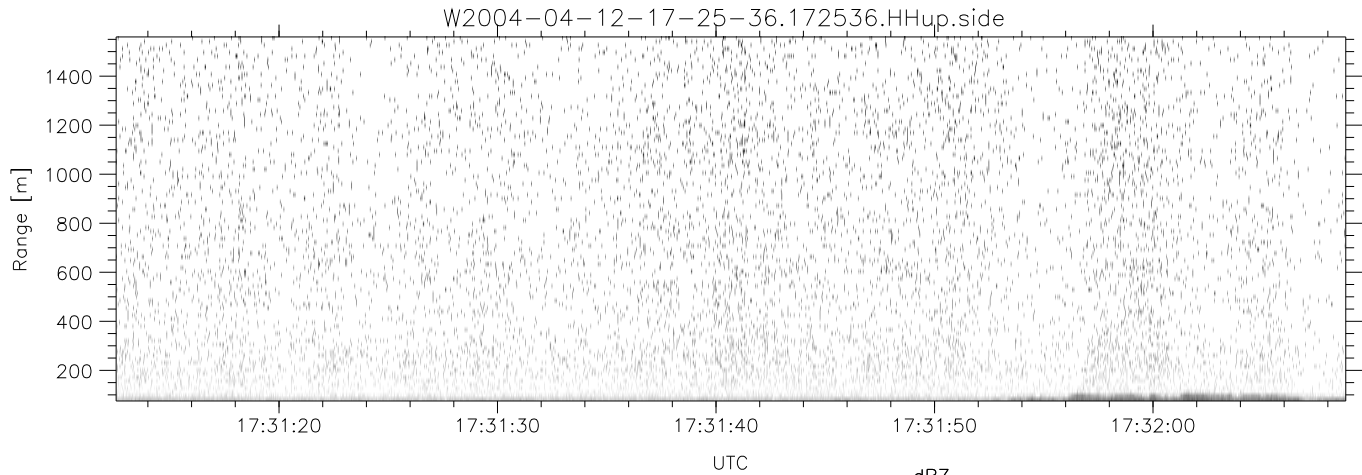
	Min	Max	Mean	Std	Varc%
hhN (dB)	-68.07	-64.90	-66.44	-76.46	10.0
vvN (dB)	-68.13	-64.80	-66.43	-76.42	10.0
hhL (dB)	-17.93	-10.04	-13.47	-20.61	19.3
vvL (dB)	0.10	6.00	5.12	-2.18	18.6
ppN (m/s)	-12.44	13.02	-0.09	4.12	
ppT (m/s)	-98.25	102.84	-0.71	32.56	
hh/vv (dB)	-99	-99	-99	-99	-99
vh/hh (dB)	-99	-99	-99	-99	-99
hv/vv (dB)	NaN	-39.39	-64.10	-52.67	1390
hn_jmp (dB)			0.11		
vn_jmp (dB)			0.11		



CIFEX 2004 Data (cal/250ns+2.5/100ns-3.5/500ns: 53.0,50.0)

W2004-04-12-17-25-36 - PPMAG4, IRIG:1/0/2
 UTC: 17:25:36.43 to 17:47:15.73, Dur: 1299s
 TimeLngth: 1299.31s, TimeInt: 28ms (35.4pps)
 TimeCor=-13.0s, PPS(min,max,med): 35,36,35
 Timeint/DSPdiff(mn,min,mx):28,28,37/28,28,37
 Prof: 351 to 46412, NumProf(r/t): 17571/46061
 ProcTime/Recs: 17:25:36-17:33:52/0-17570
 ADacqtime: 25ms; DRate: 198.4KB/s; Flags: 0, 0, 0
 Pulse: 275ns, IFilt: 5.0MHz; ppPol: HH HV VV
 TxPol: HHVV, PRF: 20 10 20 10 kHz, NoiseFlg:4,4
 Range: Delay 75m, Spacing 15m, Gates 100
 Ave. Pulses: 84, Rng/Prof Aspect@90m/s: 5.9

	Min	Max	Mean	Std	Varc%
hhN (dB)	-68.07	-64.90	-66.44	-76.46	10.0
vvN (dB)	-68.13	-64.80	-66.43	-76.42	10.0
hhL (dB)	-17.93	-10.04	-13.47	-20.61	19.3
vvL (dB)	0.10	6.00	5.12	-2.18	18.6
ppN (m/s)	-12.44	13.02	-0.09	4.12	
ppT (m/s)	-98.25	102.84	-0.71	32.56	
hh/vv (dB)	-99	-99	-99	-99	-99
vh/hh (dB)	-99	-99	-99	-99	-99
hv/vv (dB)	NaN	-39.39	-64.10	-52.67	1390
hnjmp (dB)			0.11		
vnjmp (dB)			0.11		



CIFEX 2004 Data (cal/250ns+2.5/100ns-3.5/500ns: 53.0,50.0)

W2004-04-12-17-25-36 - PPMAG4, IRIG:1/0/2
 UTC: 17:25:36.43 to 17:47:15.73, Dur: 1299s
 TimeLngth: 1299.31s, TimeInt: 28ms (35.4pps)
 TimeCor=-13.0s, PPS(min,max,med): 35,36,35
 Timeint/DSPdiff(mn,min,mx):28,28,37/28,28,37
 Prof: 351 to 46412, NumProf(r/t): 17571/46061
 ProcTime/Recs: 17:25:36-17:33:52/0-17570
 ADacqtime: 25ms; DRate: 198.4KB/s; Flags: 0, 0, 0
 Pulse: 275ns, IFilt: 5.0MHz; ppPol: HH HV VV
 TxPol: HHVV, PRF: 20 10 20 10 kHz, NoiseFlg:4,4
 Range: Delay 75m, Spacing 15m, Gates 100
 Ave. Pulses: 84, Rng/Prof Aspect@90m/s: 5.9

	Min	Max	Mean	Std	Varc%
hhN(dB)	-68.07	-64.90	-66.44	-76.46	10.0
vvN(dB)	-68.13	-64.80	-66.43	-76.42	10.0
hhL(dB)	-17.93	-10.04	-13.47	-20.61	19.3
vvL(dB)	0.10	6.00	5.12	-2.18	18.6
ppN(m/s)	-12.44	13.02	-0.09	4.12	
ppT(m/s)	-98.25	102.84	-0.71	32.56	
hh/vv(dB)	-99	-99	-99	-99	-99
vh/hh(dB)	-99	-99	-99	-99	-99
hv/vv(dB)	NaN	-39.39	-64.10	-52.67	1390
hnjmp(dB)			0.11		
vnjmp(dB)			0.11		