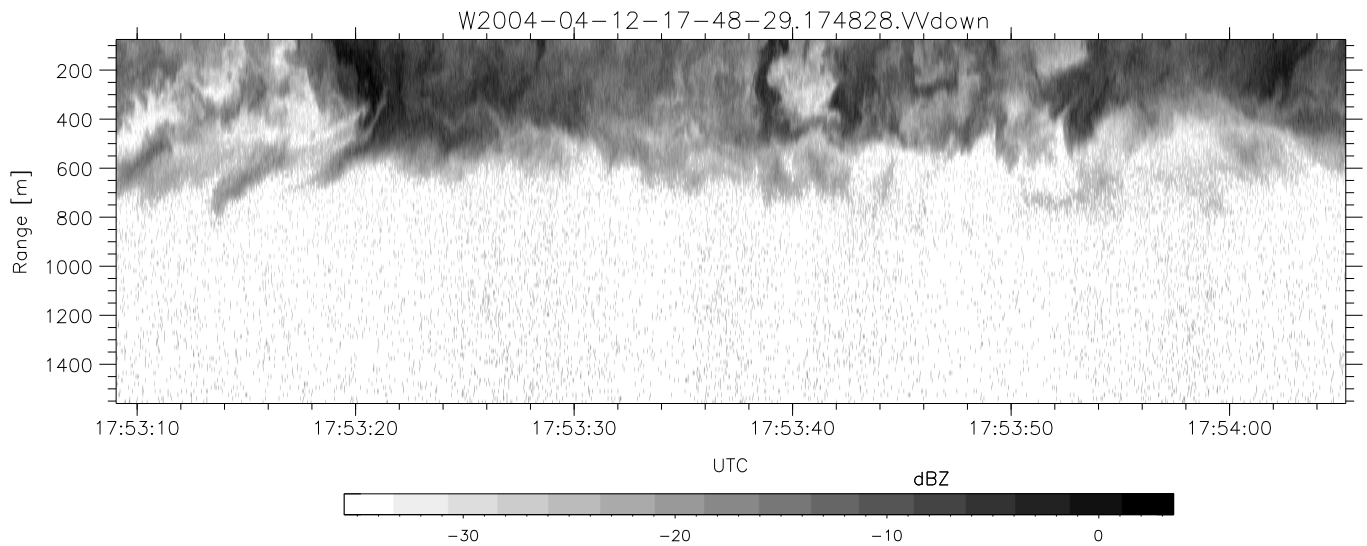
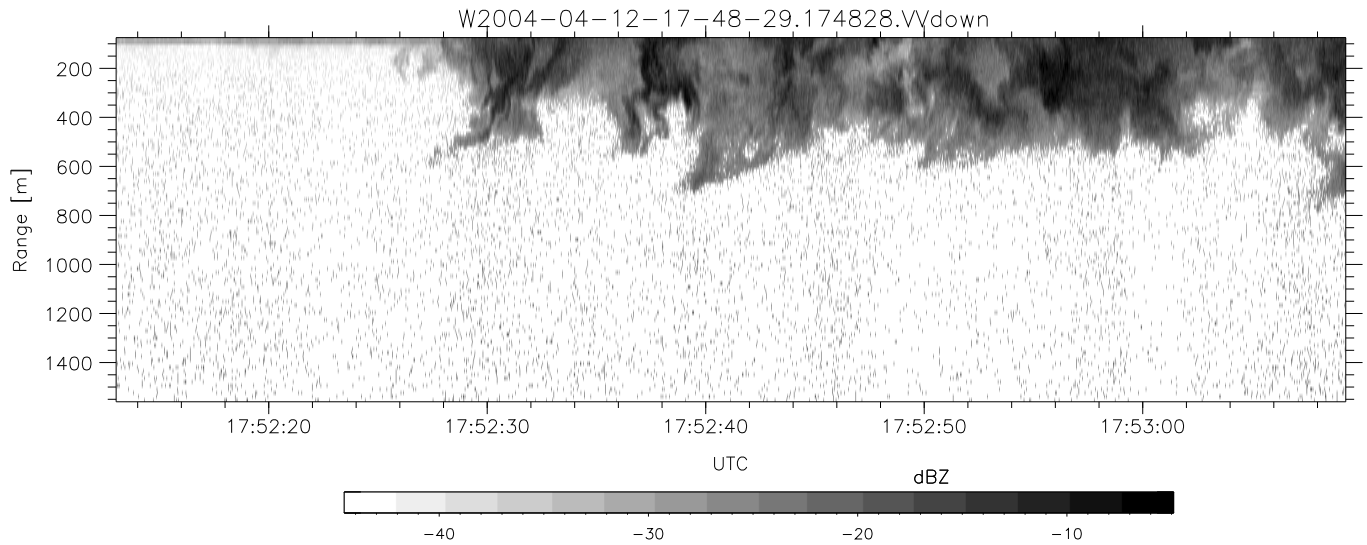
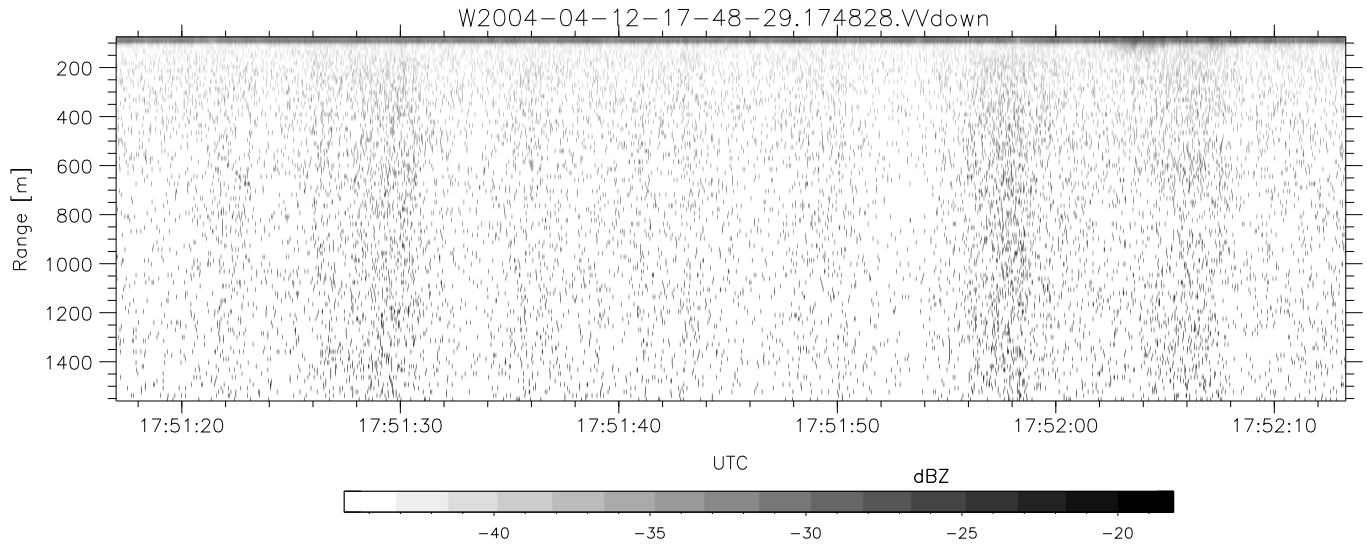


CIFEX 2004 Data (cal/250ns+2.5/100ns-3.5/500ns: 53.0,50.0)

W2004-04-12-17-48-29 - PPMAG4, IRIG:1/0/2
 UTC: 17:48:28.96 to 18:02:31.18, Dur: 843s
 TimeLngth: 842.24s, TimeInt: 28ms (35.4pps)
 TimeCor=-13.0s, PPS(min,max,med): 35,36,35
 Timeint/DSPdiff(mn,min,mx):28,28,37/28,28,37
 Prof: 247 to 30105, NumProf(r/t): 17571/29858
 ProcTime/Recs: 17:48:28-17:56:44/0-17570
 ADacqtime: 25ms; DRate: 198.4KB/s; Flags: 0, 0, 0
 Pulse: 275ns, IFfilt: 5.0MHz; ppPol: HH HV VV
 TxPol: HHVV, PRF: 20 10 20 10 kHz, Noiseflg:4,1
 Range: Delay 75m, Spacing 15m, Gates 100
 Ave. Pulses: 84, Rng/Prof Aspect@90m/s: 5.9

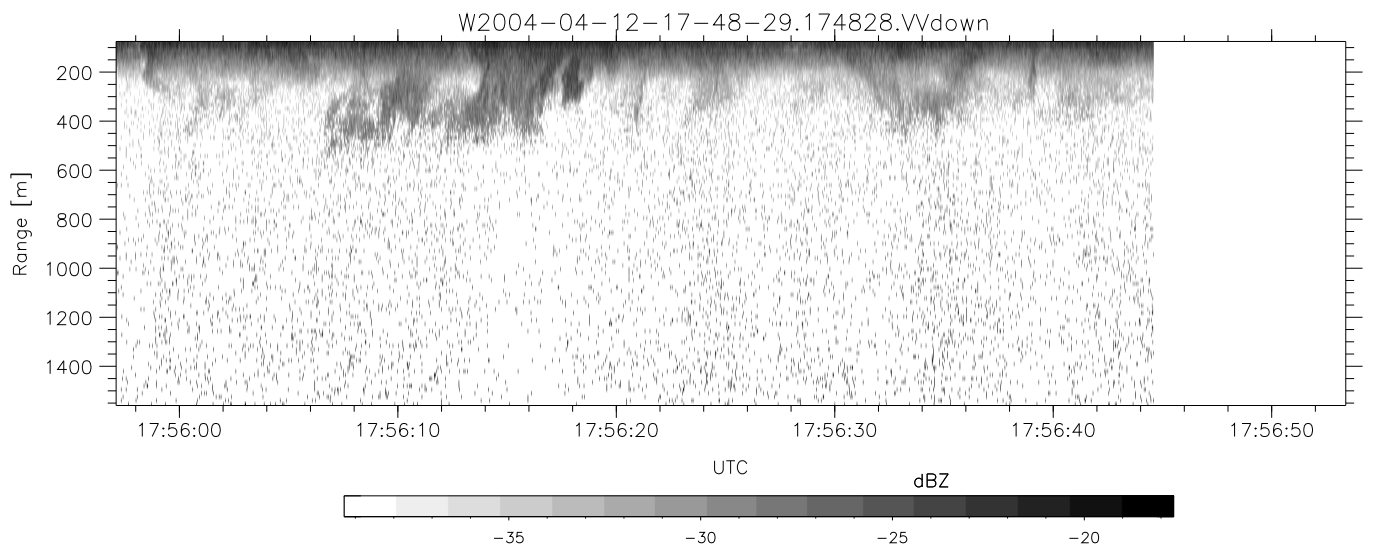
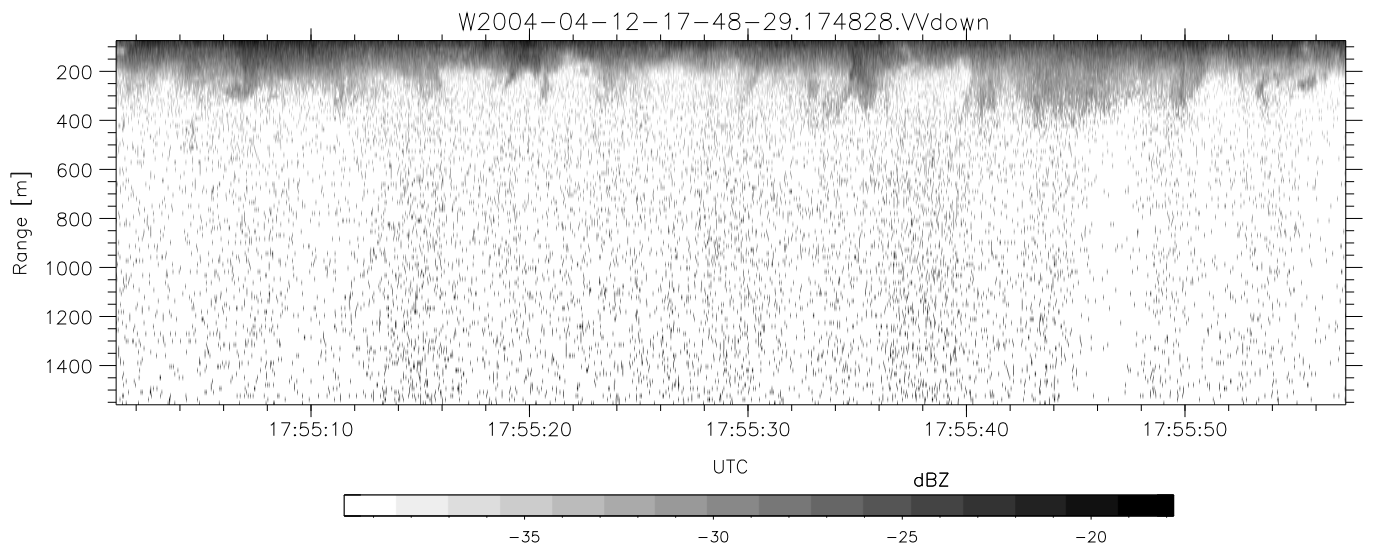
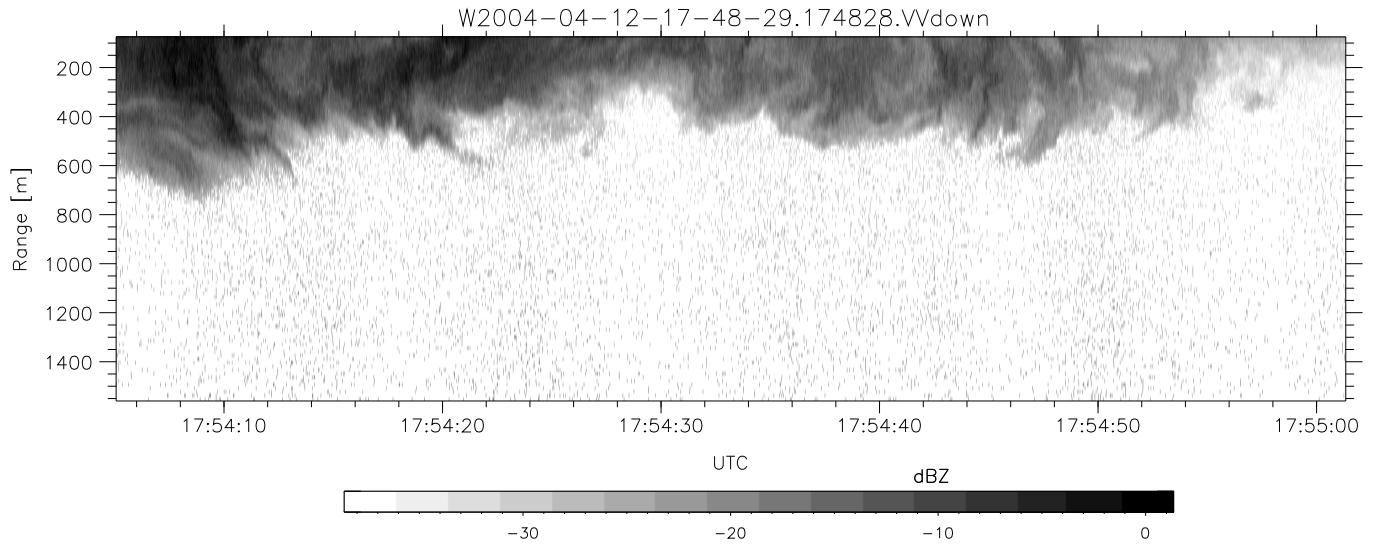
	Min	Max	Mean	Std	Varc%
hhN(dB)	-68.22	-65.00	-66.44	-76.50	9.9
vvN(dB)	-68.33	-64.95	-66.45	-76.47	10.0
hhL(dB)	-24.03	0.59	-8.66	-6.40	168.
vvL(dB)	-5.23	6.00	3.46	0.10	46.2
ppN(m/s)	-12.34	12.58	-0.06	4.17	
ppT(m/s)	-97.51	99.40	-0.46	32.93	
hh/vv(dB)	NaN	36.68	NaN	44.24	-125
vh/hh(dB)	-99	-99	-99	-99	-99
hv/vv(dB)	NaN	-34.92	-52.90	-45.71	523.
hnjmp(dB)			0.11		
vnjmp(dB)			0.10		



CIFEX 2004 Data (cal/250ns+2.5/100ns-3.5/500ns: 53.0,50.0)

W2004-04-12-17-48-29 - PPMAG4, IRIG:1/0/2
 UTC: 17:48:28.96 to 18:02:31.18, Dur: 843s
 TimeLngth: 842.24s, TimeInt: 28ms (35.4pps)
 TimeCor=-13.0s, PPS(min,max,med): 35,36,35
 Timeint/DSPdiff(mn,min,mx):28,28,37/28,28,37
 Prof: 247 to 30105, NumProf(r/t): 17571/29858
 ProcTime/Recs: 17:48:28-17:56:44/0-17570
 ADacqtime: 25ms; DRate: 198.4KB/s; Flags: 0, 0, 0
 Pulse: 275ns, IFfilt: 5.0MHz; ppPol: HH HV VV
 TxPol: HHVV, PRF: 20 10 20 10 kHz, NoiseFlg:4,1
 Range: Delay 75m, Spacing 15m, Gates 100
 Ave. Pulses: 84, Rng/Prof Aspect@90m/s: 5.9

	Min	Max	Mean	Std	Varc%
hhN (dB)	-68.22	-65.00	-66.44	-76.50	9.9
vvN (dB)	-68.33	-64.95	-66.45	-76.47	10.0
hhL (dB)	-24.03	0.59	-8.66	-6.40	168.
vvL (dB)	-5.23	6.00	3.46	0.10	46.2
ppN (m/s)	-12.34	12.58	-0.06	4.17	
ppT (m/s)	-97.51	99.40	-0.46	32.93	
hh/vv (dB)	NaN	36.68	NaN	44.24	-125
vh/hh (dB)	-99	-99	-99	-99	-99
hv/vv (dB)	NaN	-34.92	-52.90	-45.71	523.
hn_jmp (dB)				0.11	
vn_jmp (dB)				0.10	



CIFEX 2004 Data (cal/250ns+2.5/100ns-3.5/500ns: 53.0,50.0)

W2004-04-12-17-48-29 - PPMAG4, IRIG:1/0/2
 UTC: 17:48:28.96 to 18:02:31.18, Dur: 843s
 TimeLngth: 842.24s, TimeInt: 28ms (35.4pps)
 TimeCor=-13.0s, PPS(min,max,med): 35,36,35
 Timeint/DSPdiff(mn,min,mx):28,28,37/28,28,37
 Prof: 247 to 30105, NumProf(r/t): 17571/29858
 ProcTime/Recs: 17:48:28-17:56:44/0-17570
 ADacqtime: 25ms; DRate: 198.4KB/s; Flags: 0, 0, 0
 Pulse: 275ns, IFfilt: 5.0MHz; ppPol: HH HV VV
 TxPol: HHVV, PRF: 20 10 20 10 kHz, NoiseFlg:4,1
 Range: Delay 75m, Spacing 15m, Gates 100
 Ave. Pulses: 84, Rng/Prof Aspect@90m/s: 5.9

	Min	Max	Mean	Std	Varc%
hhN (dB)	-68.22	-65.00	-66.44	-76.50	9.9
vvN (dB)	-68.33	-64.95	-66.45	-76.47	10.0
hhL (dB)	-24.03	0.59	-8.66	-6.40	168.
vvL (dB)	-5.23	6.00	3.46	0.10	46.2
ppN (m/s)	-12.34	12.58	-0.06	4.17	
ppT (m/s)	-97.51	99.40	-0.46	32.93	
hh/vv (dB)	NaN	36.68	NaN	44.24	-125
vh/hh (dB)	-99	-99	-99	-99	-99
hv/vv (dB)	NaN	-34.92	-52.90	-45.71	523.
hn_jmp (dB)			0.11		
vn_jmp (dB)			0.10		