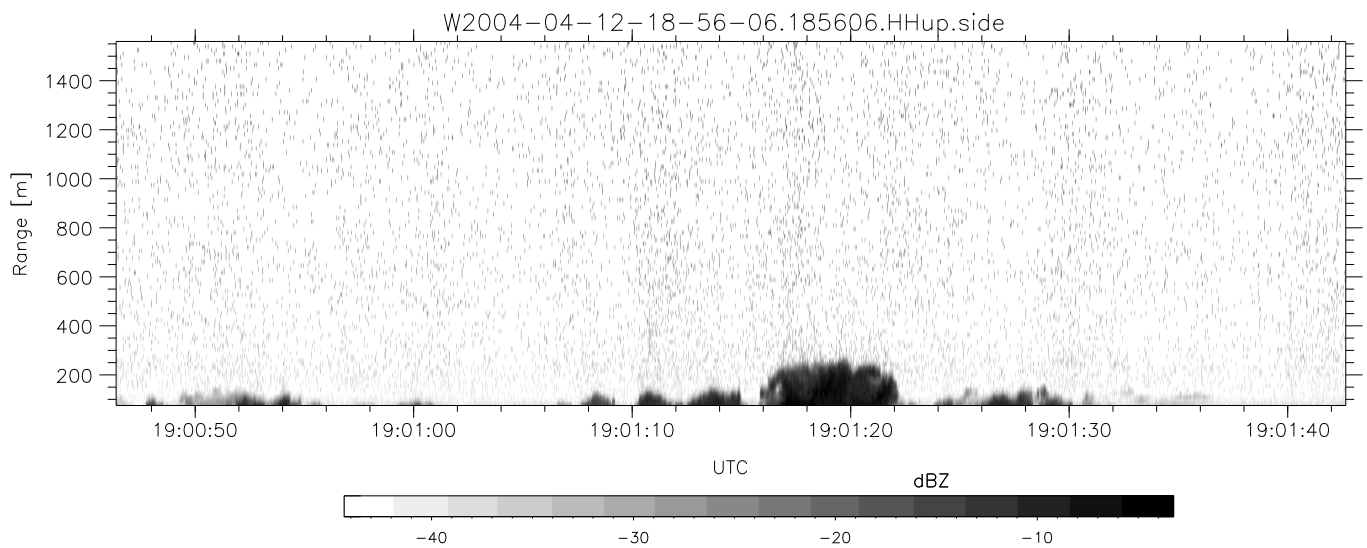
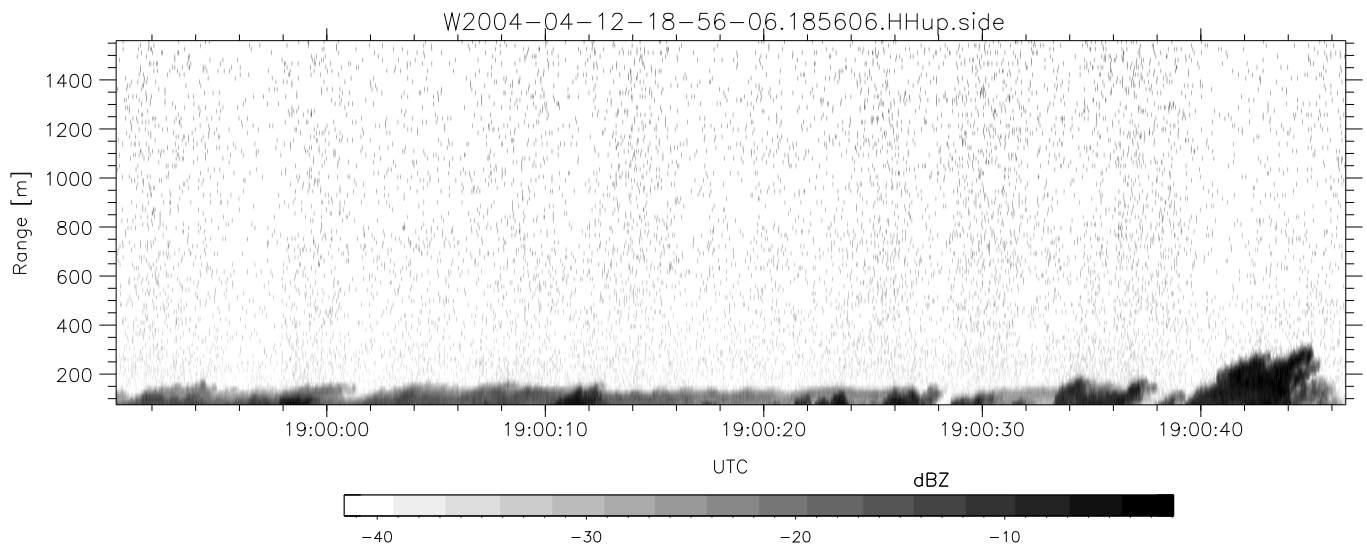
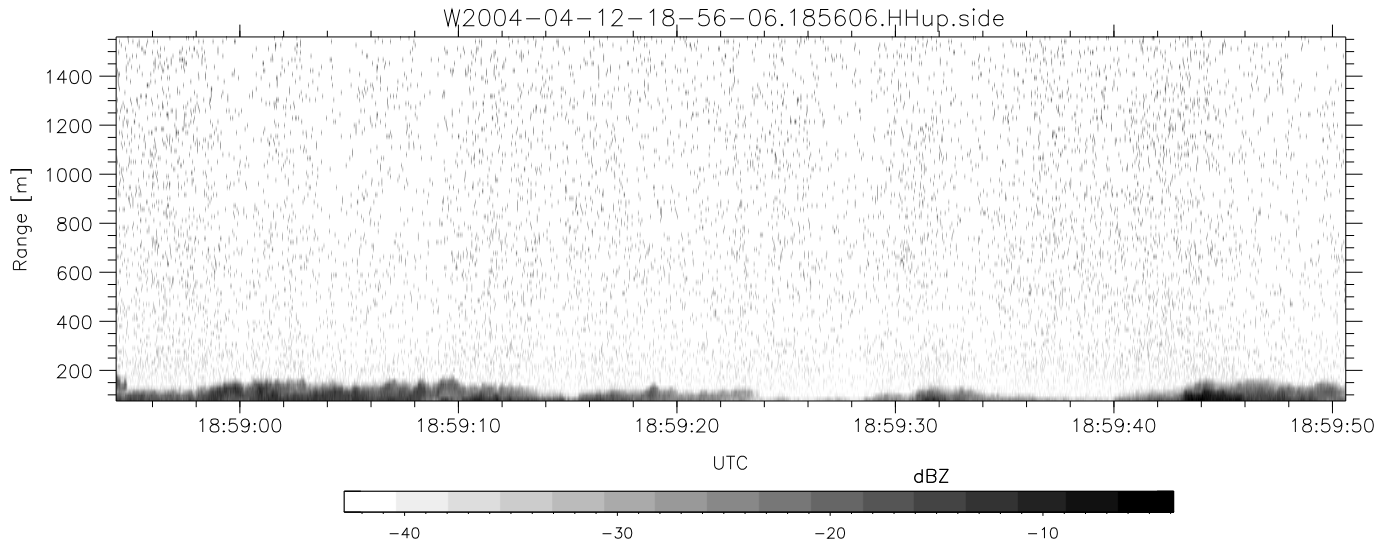


CIFEX 2004 Data (cal/250ns+2.5/100ns-3.5/500ns: 53.0,50.0)

W2004-04-12-18-56-06 - PPMAG4, IRIG:1/0/2  
 UTC: 18:56:06.30 to 19:26:54.73, Dur: 1848s  
 TimeLngth: 1848.45s, TimeInt: 28ms (35.4pps)  
 TimeCor=-13.0s, PPS(min,max,med): 35,36,35  
 Timeint/DSPdiff(mn,min,mx):28,28,28/28,28,28  
 Prof: 328 to 65856, NumProf(r/t): 17571/65528  
 ProcTime/Recs: 18:56:06-19:04:21/0-17570  
 ADacqtime: 25ms; DRate: 198.4KB/s; Flags: 0, 0, 0  
 Pulse: 275ns, IFfilt: 5.0MHz; ppPol: HH HV VV  
 TxPol: HHVV, PRF: 20 10 20 10 kHz, Noiseflg:4,1  
 Range: Delay 75m, Spacing 15m, Gates 100  
 Ave. Pulses: 84, Rng/Prof Aspect@90m/s: 5.9

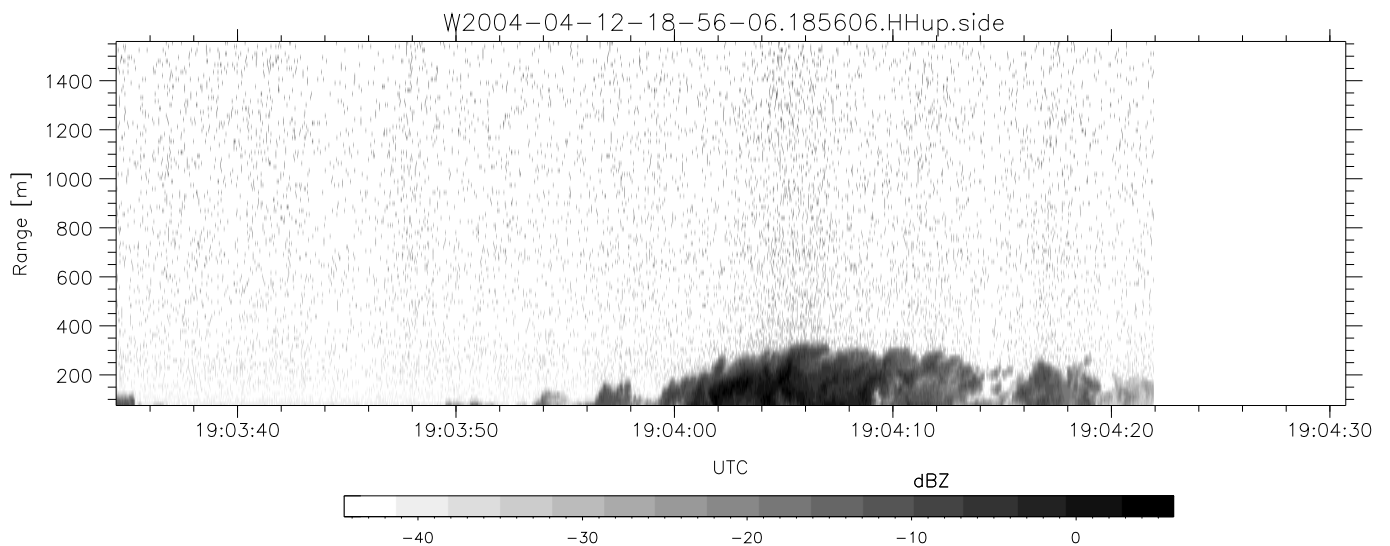
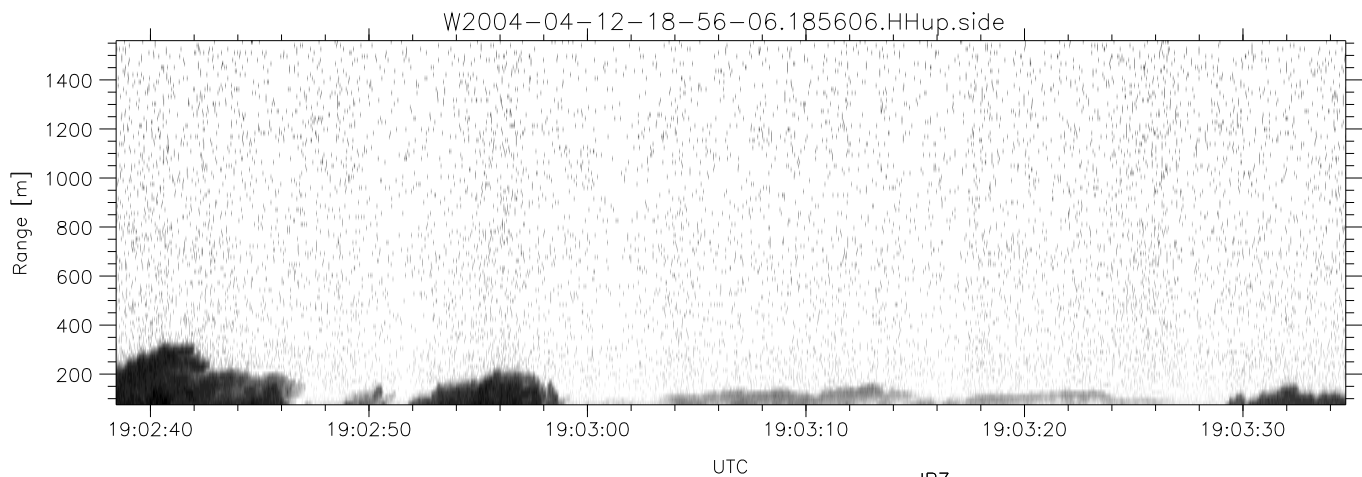
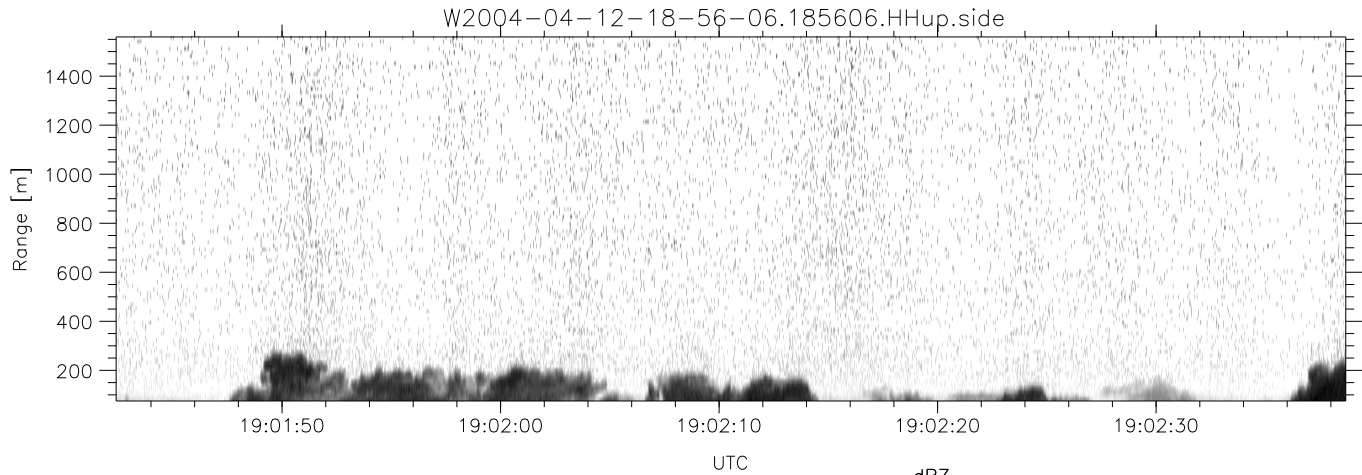
	Min	Max	Mean	Std	Varc%
hhN(dB)	-68.23	-64.92	-66.43	-76.46	9.9
vvN(dB)	-68.13	-64.90	-66.44	-76.42	10.0
hhL(dB)	-22.31	-9.60	-13.70	-20.44	21.2
vvL(dB)	1.89	6.00	5.91	-6.46	5.8
ppN(m/s)	-12.91	12.52	-0.07	4.11	
ppT(m/s)	-101.9	98.91	-0.57	32.48	
hh/vv(dB)	-30.33	24.42	4.39	10.37	396.
vh/hh(dB)	NaN	-26.87	-34.59	-35.19	87.2
hv/vv(dB)	NaN	-33.85	-54.05	-46.87	521.
hnjmp(dB)			-0.12		
vnjmp(dB)			-0.12		



CIFEX 2004 Data (cal/250ns+2.5/100ns-3.5/500ns: 53.0,50.0)

W2004-04-12-18-56-06 - PPMAG4, IRIG:1/0/2  
 UTC: 18:56:06.30 to 19:26:54.73, Dur: 1848s  
 TimeLngth: 1848.45s, TimeInt: 28ms (35.4pps)  
 TimeCor=-13.0s, PPS(min,max,med): 35,36,35  
 Timeint/DSPdiff(mn,min,mx):28,28,28/28,28,28  
 Prof: 328 to 65856, NumProf(r/t): 17571/65528  
 ProcTime/Recs: 18:56:06-19:04:21/0-17570  
 ADacqtime: 25ms; DRate: 198.4KB/s; Flags: 0, 0, 0  
 Pulse: 275ns, IFfilt: 5.0MHz; ppPol: HH HV VV  
 TxPol: HHVV, PRF: 20 10 20 10 kHz, Noiseflg:4,1  
 Range: Delay 75m, Spacing 15m, Gates 100  
 Ave. Pulses: 84, Rng/Prof Aspect@90m/s: 5.9

	Min	Max	Mean	Std	Varc%
hhN(dB)	-68.23	-64.92	-66.43	-76.46	9.9
vvN(dB)	-68.13	-64.90	-66.44	-76.42	10.0
hhL(dB)	-22.31	-9.60	-13.70	-20.44	21.2
vvL(dB)	1.89	6.00	5.91	-6.46	5.8
ppN(m/s)	-12.91	12.52	-0.07	4.11	
ppT(m/s)	-101.9	98.91	-0.57	32.48	
hh/vv(dB)	-30.33	24.42	4.39	10.37	396.
vh/hh(dB)	NaN	-26.87	-34.59	-35.19	87.2
hv/vv(dB)	NaN	-33.85	-54.05	-46.87	521.
hnjmp(dB)			-0.12		
vnjmp(dB)			-0.12		



CIFEX 2004 Data (cal/250ns+2.5/100ns-3.5/500ns: 53.0,50.0)

W2004-04-12-18-56-06 - PPMAG4, IRIG:1/0/2  
 UTC: 18:56:06.30 to 19:26:54.73, Dur: 1848s  
 TimeLngth: 1848.45s, TimeInt: 28ms (35.4pps)  
 TimeCor=-13.0s, PPS(min,max,med): 35,36,35  
 Timeint/DSPdiff(mn,min,mx):28,28,28/28,28,28  
 Prof: 328 to 65856, NumProf(r/t): 17571/65528  
 ProcTime/Recs: 18:56:06-19:04:21/0-17570  
 ADacqtime: 25ms; DRate: 198.4KB/s; Flags: 0, 0, 0  
 Pulse: 275ns, IFilt: 5.0MHz; ppPol: HH HV VV  
 TxPol: HHVV, PRF: 20 10 20 10 kHz, NoiseFlg:4,1  
 Range: Delay 75m, Spacing 15m, Gates 100  
 Ave. Pulses: 84, Rng/Prof Aspect@90m/s: 5.9

	Min	Max	Mean	Std	Varc%
hhN (dB)	-68.23	-64.92	-66.43	-76.46	9.9
vvN (dB)	-68.13	-64.90	-66.44	-76.42	10.0
hhL (dB)	-22.31	-9.60	-13.70	-20.44	21.2
vvL (dB)	1.89	6.00	5.91	-6.46	5.8
ppN (m/s)	-12.91	12.52	-0.07	4.11	
ppT (m/s)	-101.9	98.91	-0.57	32.48	
hh/vv (dB)	-30.33	24.42	4.39	10.37	396.
vh/hh (dB)	NaN	-26.87	-34.59	-35.19	87.2
hv/vv (dB)	NaN	-33.85	-54.05	-46.87	521.
hnjmp (dB)			-0.12		
vnjmp (dB)			-0.12		