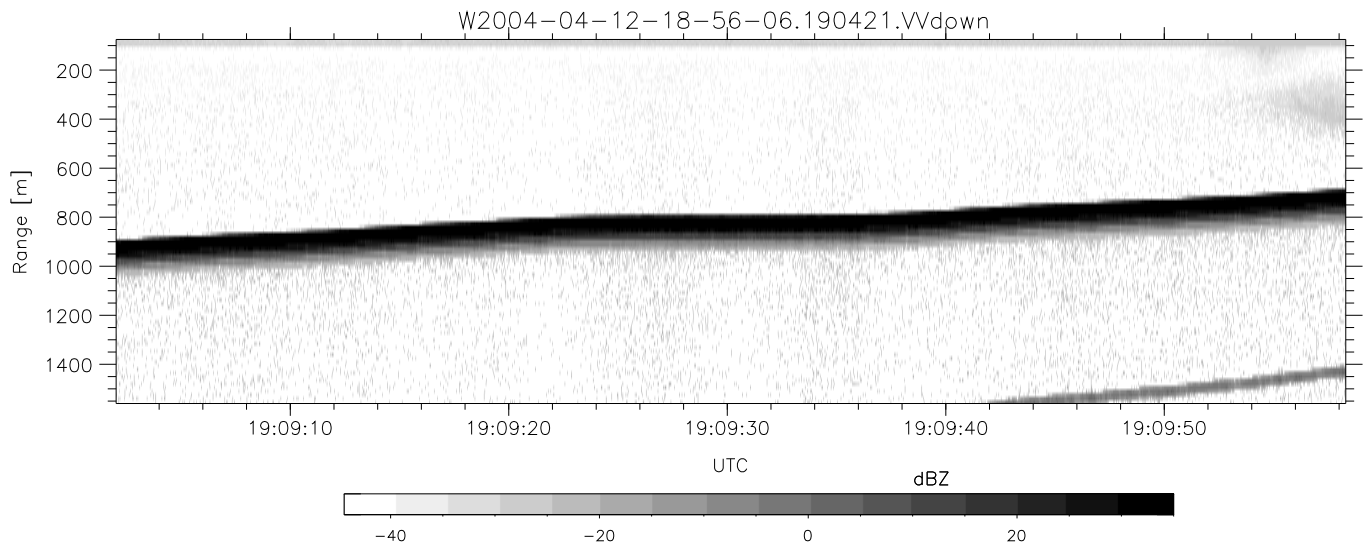
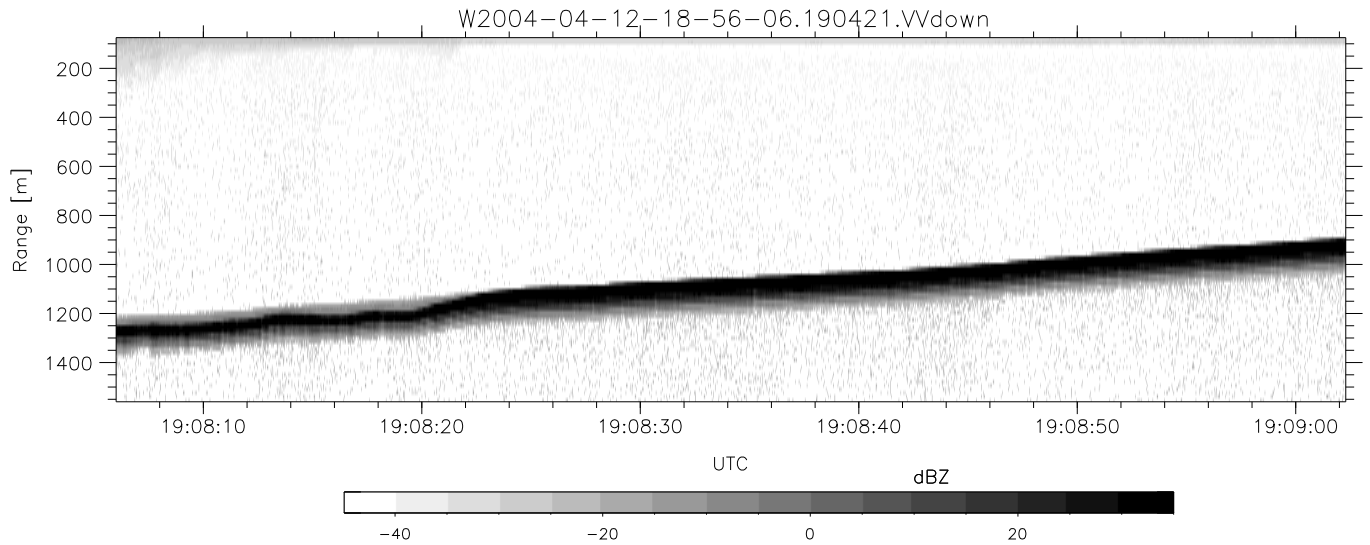
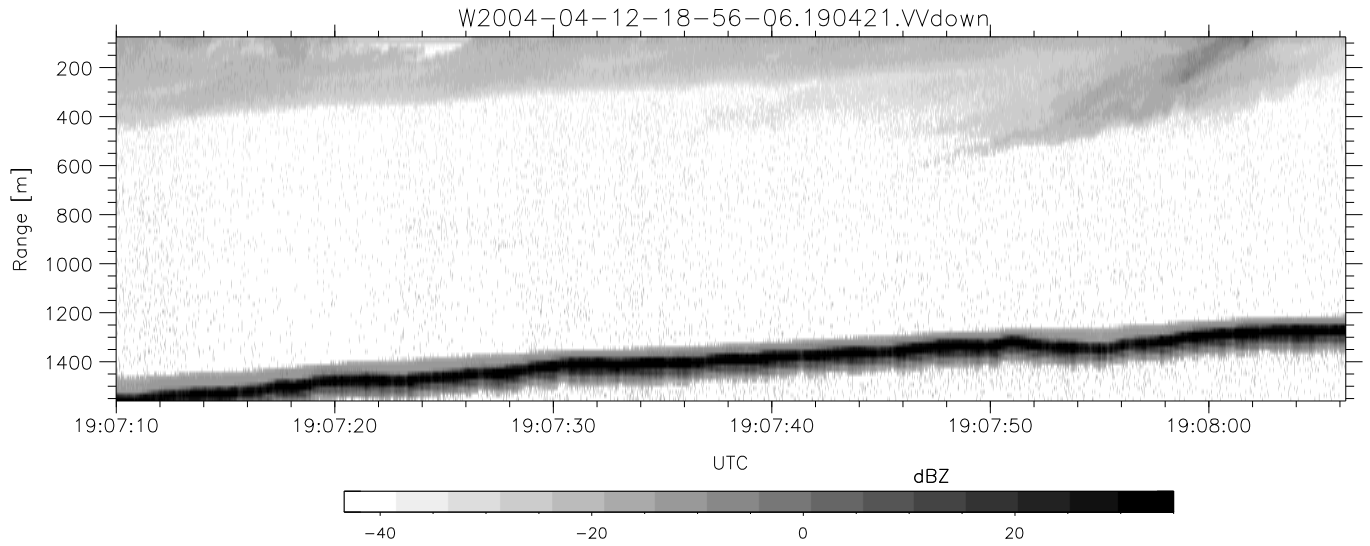


CIFEX 2004 Data (cal/250ns+2.5/100ns-3.5/500ns: 53.0,50.0)

W2004-04-12-18-56-06 - PPMAG4, IRIG:1/0/2
 UTC: 18:56:06.30 to 19:26:54.73, Dur: 1848s
 TimeLngth: 1848.45s, TimeInt: 28ms (35.4pps)
 TimeCor=-13.0s, PPS(min,max,med): 35,36,35
 Timeint/DSPdiff(mn,min,mx):28,28,28/28,28,28
 Prof: 328 to 65856, NumProf(r/t): 17571/65528
 ProcTime/Recs: 19:04:21-19:12:37/17571-35141
 ADacqtime: 25ms; DRate: 198.4KB/s; Flags: 0, 0, 0
 Pulse: 275ns, IFilt: 5.0MHz; ppPol: HH HV VV
 TxPol: HHVV, PRF: 20 10 20 10 kHz, Noiseflg:1,4
 Range: Delay 75m, Spacing 15m, Gates 100
 Ave. Pulses: 84, Rng/Prof Aspect@90m/s: 5.9

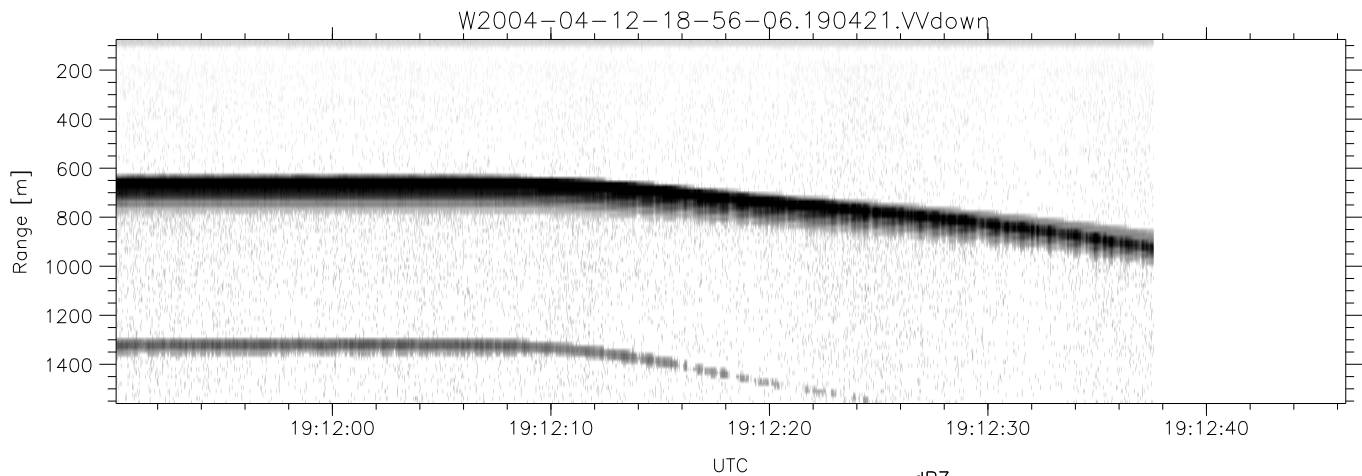
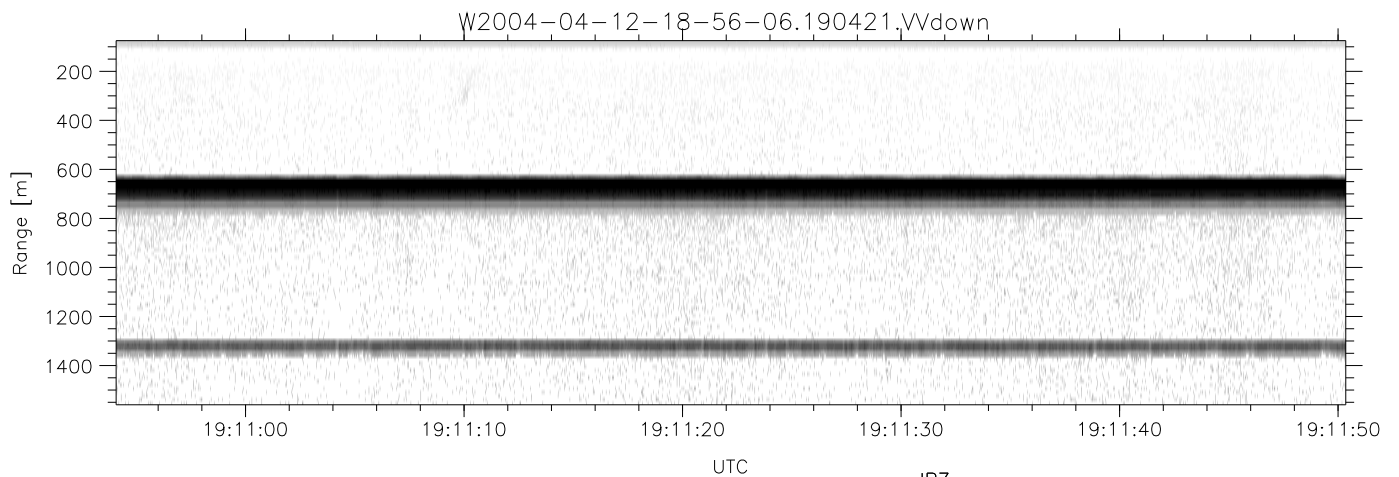
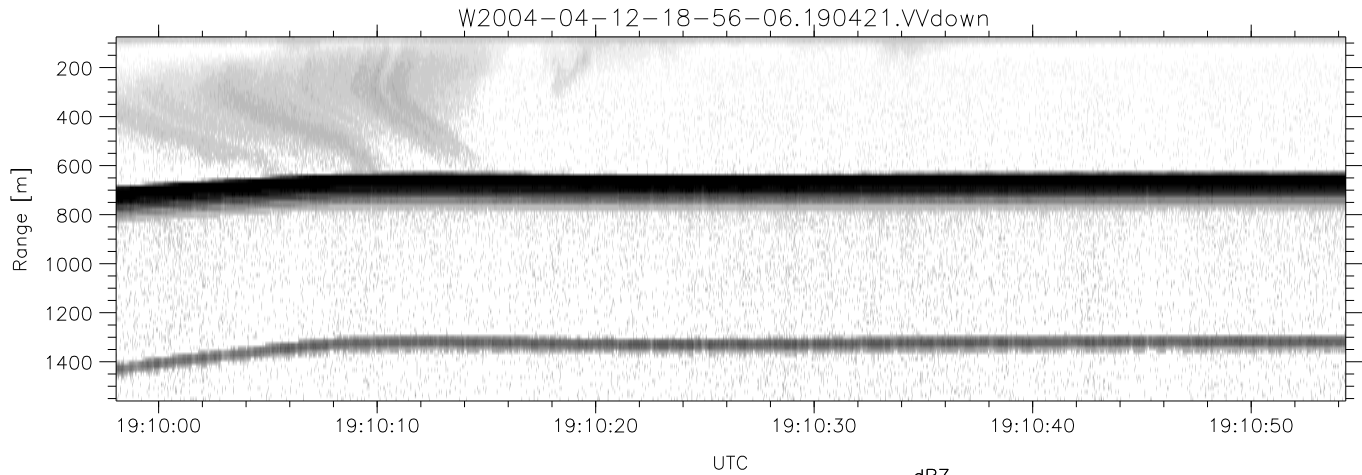
	Min	Max	Mean	Std	Varc%
hhN(dB)	-68.26	-64.60	-66.45	-76.46	10.0
vvN(dB)	-68.40	-64.70	-66.50	-76.44	10.1
hhL(dB)	-22.49	1.24	-3.96	-5.00	78.7
vvL(dB)	0.49	6.00	5.77	-3.83	11.0
ppN(m/s)	-12.48	12.27	-0.02	4.16	
ppT(m/s)	-98.61	96.94	-0.18	32.88	
hh/vv(dB)	NaN	65.42	22.37	42.91	1132
vh/hh(dB)	-37.73	-28.96	-31.77	-35.94	38.2
hv/vv(dB)	NaN	-35.84	-59.85	-48.15	1481
hnjmp(dB)				0.12	
vnjmp(dB)				0.11	



CIFEX 2004 Data (cal/250ns+2.5/100ns-3.5/500ns: 53.0,50.0)

W2004-04-12-18-56-06 - PPMAG4, IRIG:1/0/2
 UTC: 18:56:06.30 to 19:26:54.73, Dur: 1848s
 TimeLngth: 1848.45s, TimeInt: 28ms (35.4pps)
 TimeCor=-13.0s, PPS(min,max,med): 35,36,35
 Timeint/DSPdiff(mn,min,mx):28,28,28/28,28,28
 Prof: 328 to 65856, NumProf(r/t): 17571/65528
 ProcTime/Recs: 19:04:21-19:12:37/17571-35141
 ADacqtime: 25ms; DRate: 198.4KB/s; Flags: 0, 0, 0
 Pulse: 275ns, IFfilt: 5.0MHz; ppPol: HH HV VV
 TxPol: HHVV, PRF: 20 10 20 10 kHz, NoiseFlg:1,4
 Range: Delay 75m, Spacing 15m, Gates 100
 Ave. Pulses: 84, Rng/Prof Aspect@90m/s: 5.9

	Min	Max	Mean	Std	Varc%
hhN (dB)	-68.26	-64.60	-66.45	-76.46	10.0
vvN (dB)	-68.40	-64.70	-66.50	-76.44	10.1
hhL (dB)	-22.49	1.24	-3.96	-5.00	78.7
vvL (dB)	0.49	6.00	5.77	-3.83	11.0
ppN (m/s)	-12.48	12.27	-0.02	4.16	
ppT (m/s)	-98.61	96.94	-0.18	32.88	
hh/vv (dB)	NaN	65.42	22.37	42.91	1132
vh/hh (dB)	-37.73	-28.96	-31.77	-35.94	38.2
hv/vv (dB)	NaN	-35.84	-59.85	-48.15	1481
hn_jmp (dB)			0.12		
vn_jmp (dB)			0.11		



CIFEX 2004 Data (cal/250ns+2.5/100ns-3.5/500ns: 53.0,50.0)

W2004-04-12-18-56-06 - PPMAG4, IRIG:1/0/2
 UTC: 18:56:06.30 to 19:26:54.73, Dur: 1848s
 TimeLngth: 1848.45s, TimeInt: 28ms (35.4pps)
 TimeCor=-13.0s, PPS(min,max,med): 35,36,35
 Timeint/DSPdiff(mn,min,mx):28,28,28/28,28,28
 Prof: 328 to 65856, NumProf(r/t): 17571/65528
 ProcTime/Recs: 19:04:21-19:12:37/17571-35141
 ADacqtime: 25ms; DRate: 198.4KB/s; Flags: 0, 0, 0
 Pulse: 275ns, IFfilt: 5.0MHz; ppPol: HH HV VV
 TxPol: HHVV, PRF: 20 10 20 10 kHz, Noiseflg:1,4
 Range: Delay 75m, Spacing 15m, Gates 100
 Ave. Pulses: 84, Rng/Prof Aspect@90m/s: 5.9

	Min	Max	Mean	Std	Varc%
hhN(dB)	-68.26	-64.60	-66.45	-76.46	10.0
vvN(dB)	-68.40	-64.70	-66.50	-76.44	10.1
hhL(dB)	-22.49	1.24	-3.96	-5.00	78.7
vvL(dB)	0.49	6.00	5.77	-3.83	11.0
ppN(m/s)	-12.48	12.27	-0.02	4.16	
ppT(m/s)	-98.61	96.94	-0.18	32.88	
hh/vv(dB)	NaN	65.42	22.37	42.91	1132
vh/hh(dB)	-37.73	-28.96	-31.77	-35.94	38.2
hv/vv(dB)	NaN	-35.84	-59.85	-48.15	1481
hnjmp(dB)			0.12		
vnjmp(dB)			0.11		