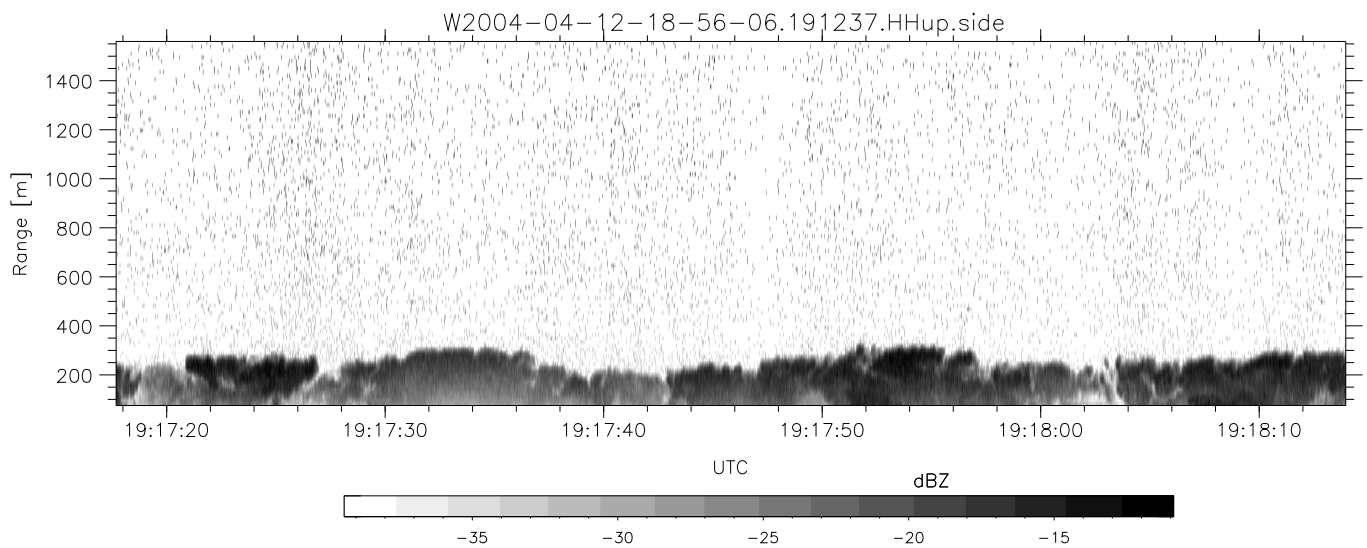
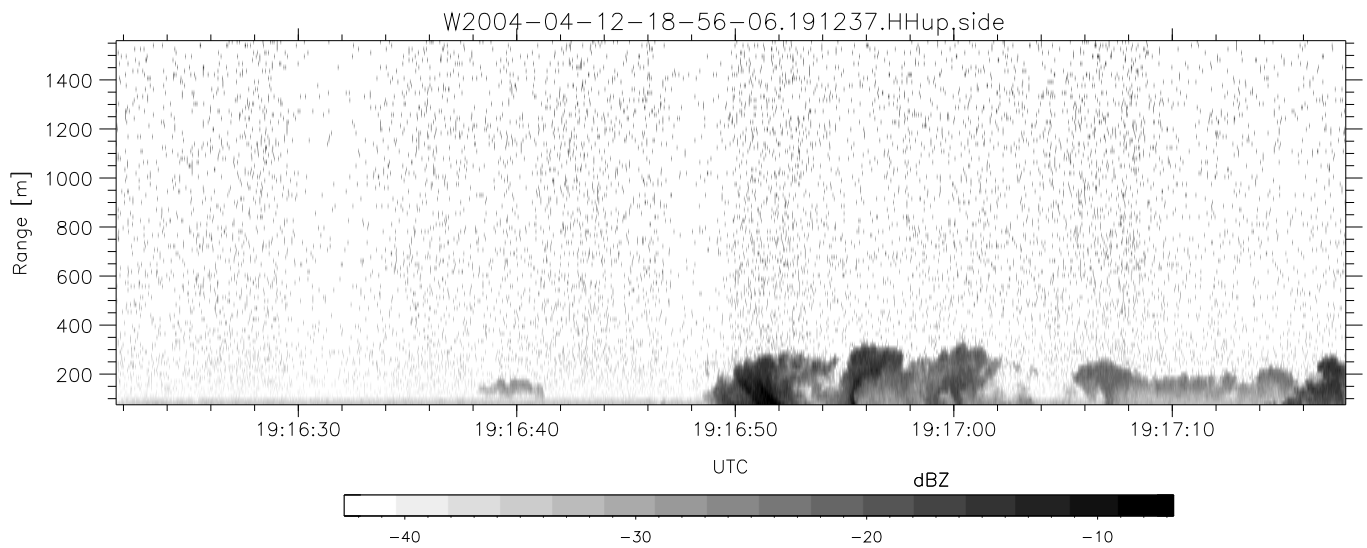
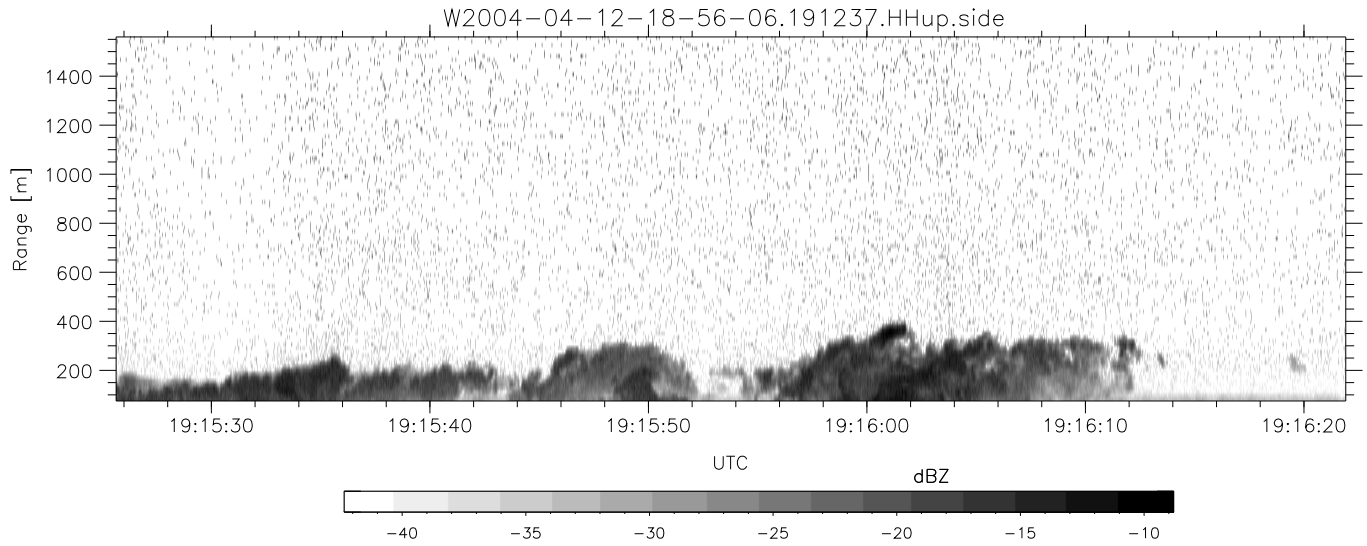


CIFEX 2004 Data (cal/250ns+2.5/100ns-3.5/500ns: 53.0,50.0)

W2004-04-12-18-56-06 - PPMAG4, IRIG:1/0/2  
 UTC: 18:56:06.30 to 19:26:54.73, Dur: 1848s  
 TimeLngth: 1848.45s, TimeInt: 28ms (35.4pps)  
 TimeCor=-13.0s, PPS(min,max,med): 35,36,35  
 Timeint/DSPdiff(mn,min,mx):28,28,38/28,28,38  
 Prof: 328 to 65856, NumProf(r/t): 17571/65528  
 ProcTime/Recs: 19:12:37-19:20:53/35142-52712  
 ADacqtime: 25ms; DRate: 198.4KB/s; Flags: 0, 0, 0  
 Pulse: 275ns, IFfilt: 5.0MHz; ppPol: HH HV VV  
 TxPol: HHVV, PRF: 20 10 20 10 kHz, Noiseflg:4,4  
 Range: Delay 75m, Spacing 15m, Gates 100  
 Ave. Pulses: 84, Rng/Prof Aspect@90m/s: 5.9

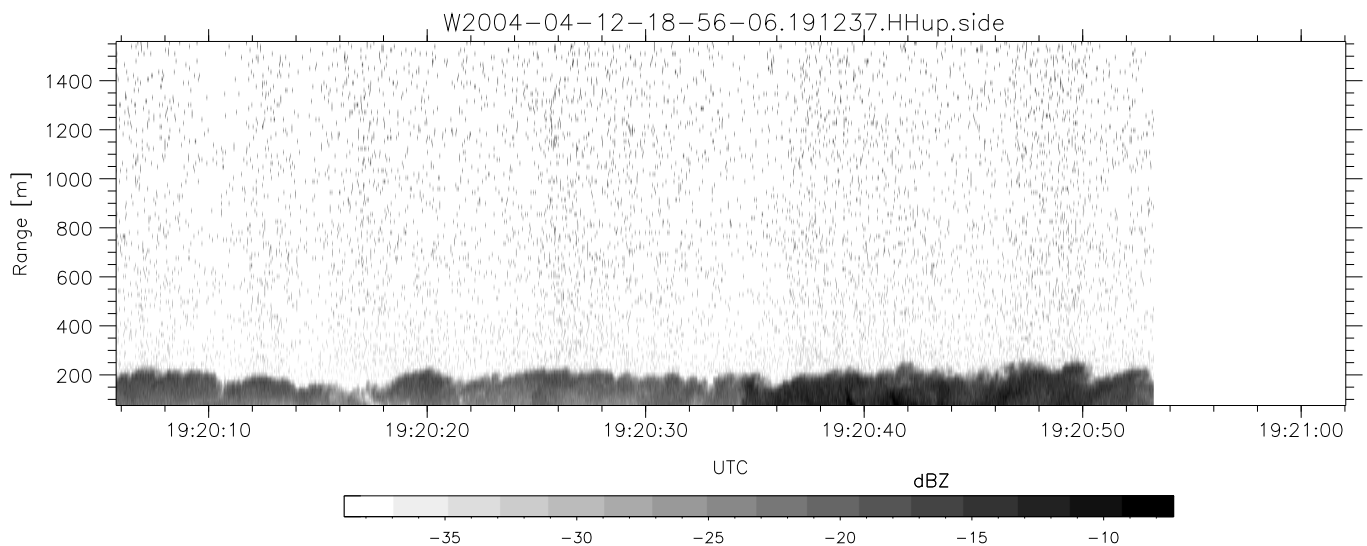
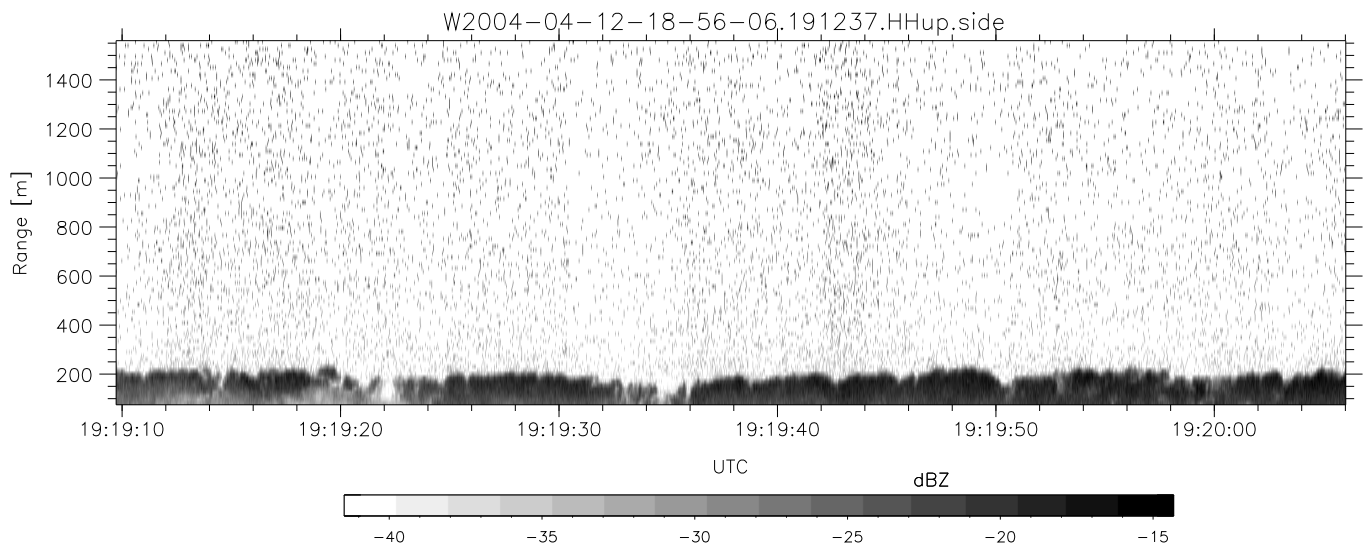
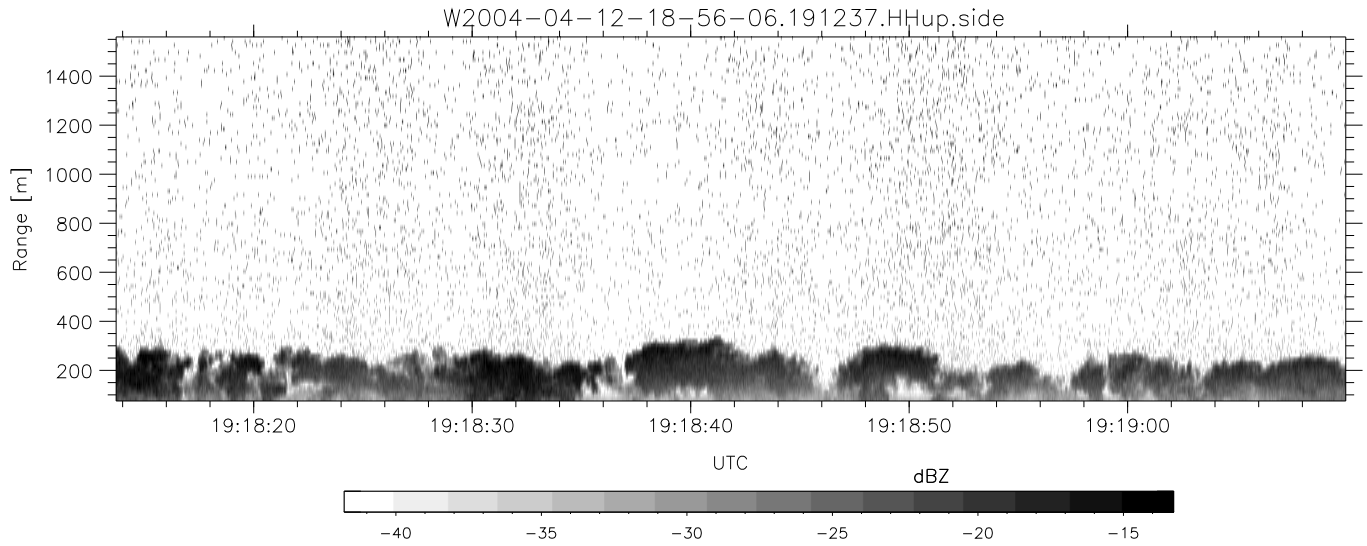
	Min	Max	Mean	Std	Varc%
hhN (dB)	-68.28	-64.94	-66.50	-76.44	10.2
vvN (dB)	-68.10	-65.03	-66.53	-76.49	10.1
hhL (dB)	-16.76	0.33	-6.21	-6.71	89.0
vvL (dB)	-0.29	6.00	5.86	-5.46	7.4
ppN (m/s)	-12.27	12.27	-0.02	4.16	
ppT (m/s)	-96.91	96.93	-0.12	32.83	
hh/vv (dB)	NaN	78.24	32.01	54.58	1809
vh/hh (dB)	NaN	-27.40	-36.37	-36.70	92.8
hv/vv (dB)	NaN	-35.32	-58.39	-47.77	1153
hnjmp (dB)			-0.13		
vnjmp (dB)			-0.11		



CIFEX 2004 Data (cal/250ns+2.5/100ns-3.5/500ns: 53.0,50.0)

W2004-04-12-18-56-06 - PPMAG4, IRIG:1/0/2  
 UTC: 18:56:06.30 to 19:26:54.73, Dur: 1848s  
 TimeLngth: 1848.45s, TimeInt: 28ms (35.4pps)  
 TimeCor=-13.0s, PPS(min,max,med): 35,36,35  
 Timeint/DSPdiff(mn,min,mx):28,28,38/28,28,38  
 Prof: 328 to 65856, NumProf(r/t): 17571/65528  
 ProcTime/Recs: 19:12:37-19:20:53/35142-52712  
 ADacqtime: 25ms; DRate: 198.4KB/s; Flags: 0, 0, 0  
 Pulse: 275ns, IFfilt: 5.0MHz; ppPol: HH HV VV  
 TxPol: HHVV, PRF: 20 10 20 10 kHz, Noiseflg:4,4  
 Range: Delay 75m, Spacing 15m, Gates 100  
 Ave. Pulses: 84, Rng/Prof Aspect@90m/s: 5.9

	Min	Max	Mean	Std	Varc%
hhN(dB)	-68.28	-64.94	-66.50	-76.44	10.2
vvN(dB)	-68.10	-65.03	-66.53	-76.49	10.1
hhL(dB)	-16.76	0.33	-6.21	-6.71	89.0
vvL(dB)	-0.29	6.00	5.86	-5.46	7.4
ppN(m/s)	-12.27	12.27	-0.02	4.16	
ppT(m/s)	-96.91	96.93	-0.12	32.83	
hh/vv(dB)	NaN	78.24	32.01	54.58	1809
vh/hh(dB)	NaN	-27.40	-36.37	-36.70	92.8
hv/vv(dB)	NaN	-35.32	-58.39	-47.77	1153
hnjmp(dB)			-0.13		
vnjmp(dB)			-0.11		



CIFEX 2004 Data (cal/250ns+2.5/100ns-3.5/500ns: 53.0,50.0)

W2004-04-12-18-56-06 - PPMAG4, IRIG:1/0/2  
 UTC: 18:56:06.30 to 19:26:54.73, Dur: 1848s  
 TimeLngth: 1848.45s, TimeInt: 28ms (35.4pps)  
 TimeCor=-13.0s, PPS(min,max,med): 35,36,35  
 Timeint/DSPdiff(mn,min,mx):28,28,38/28,28,38  
 Prof: 328 to 65856, NumProf(r/t): 17571/65528  
 ProcTime/Recs: 19:12:37-19:20:53/35142-52712  
 ADacqtime: 25ms; DRate: 198.4KB/s; Flags: 0, 0, 0  
 Pulse: 275ns, IFilt: 5.0MHz; ppPol: HH HV VV  
 TxPol: HHVV, PRF: 20 10 20 10 kHz, NoiseFlg:4,4  
 Range: Delay 75m, Spacing 15m, Gates 100  
 Ave. Pulses: 84, Rng/Prof Aspect@90m/s: 5.9

	Min	Max	Mean	Std	Varc%
hhN (dB)	-68.28	-64.94	-66.50	-76.44	10.2
vvN (dB)	-68.10	-65.03	-66.53	-76.49	10.1
hhL (dB)	-16.76	0.33	-6.21	-6.71	89.0
vvL (dB)	-0.29	6.00	5.86	-5.46	7.4
ppN (m/s)	-12.27	12.27	-0.02	4.16	
ppT (m/s)	-96.91	96.93	-0.12	32.83	
hh/vv (dB)	NaN	78.24	32.01	54.58	1809
vh/hh (dB)	NaN	-27.40	-36.37	-36.70	92.8
hv/vv (dB)	NaN	-35.32	-58.39	-47.77	1153
hn_jmp (dB)			-0.13		
vn_jmp (dB)			-0.11		