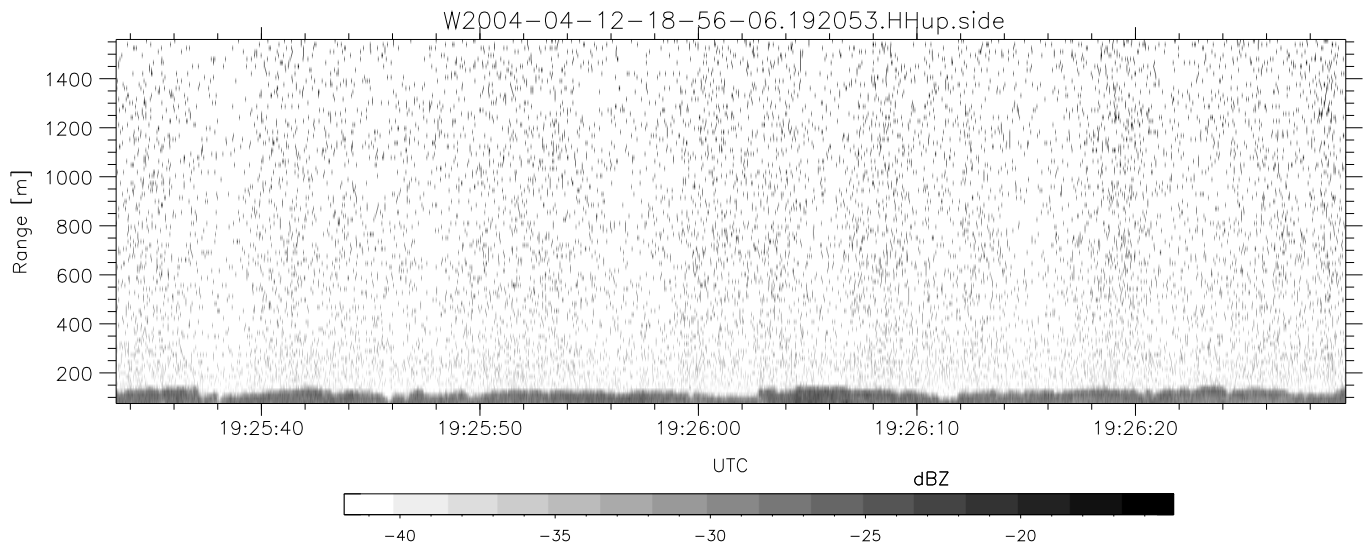
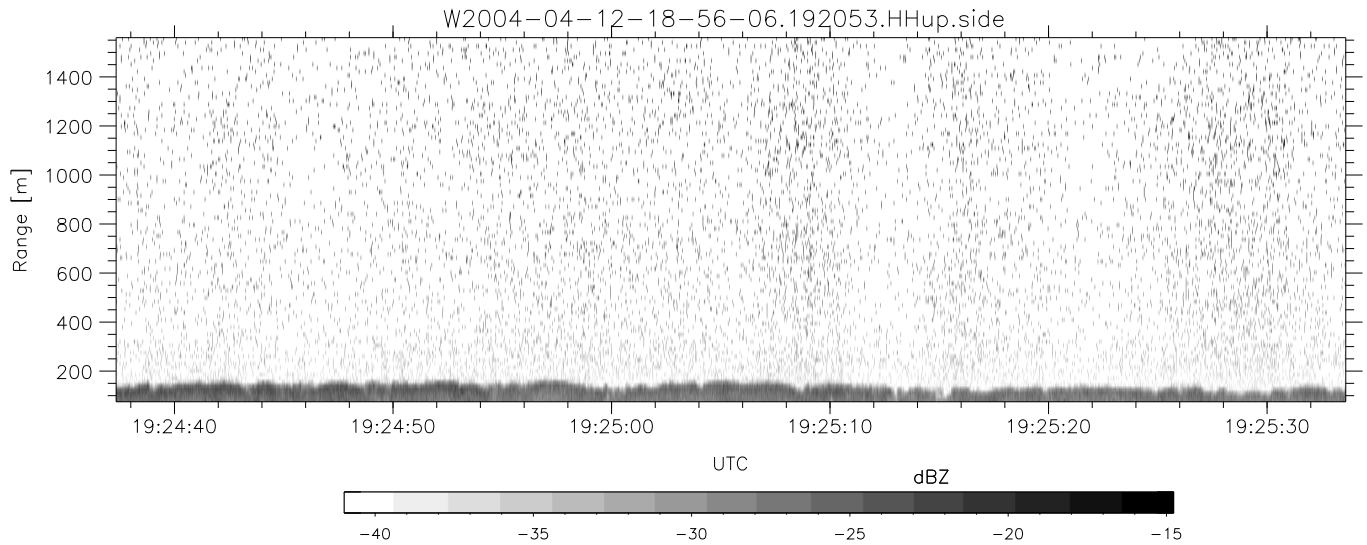
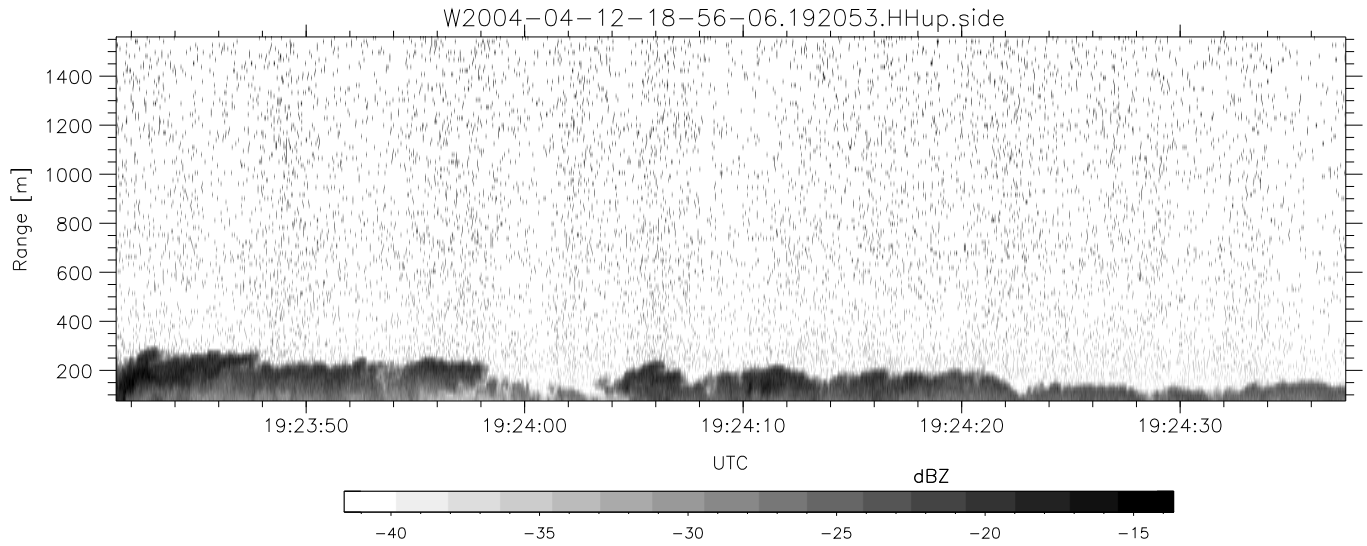


CIFEX 2004 Data (cal/250ns+2.5/100ns-3.5/500ns: 53.0,50.0)

W2004-04-12-18-56-06 - PPMAG4, IRIG:1/0/2
 UTC: 18:56:06.30 to 19:26:54.73, Dur: 1848s
 TimeLngth: 1848.45s, TimeInt: 28ms (35.4pps)
 TimeCor=-13.0s, PPS(min,max,med): 35,36,35
 Timeint/DSPdiff(mn,min,mx):28,28,28/28,28,28
 Prof: 328 to 65856, NumProf(r/t): 12815/65528
 ProcTime/Recs: 19:20:53-19:26:54/52713-65527
 ADacqtime: 25ms; DRate: 198.4KB/s; Flags: 0, 0, 0
 Pulse: 275ns, IFfilt: 5.0MHz; ppPol: HH HV VV
 TxPol: HHVV, PRF: 20 10 20 10 kHz, NoiseFlg:4,1
 Range: Delay 75m, Spacing 15m, Gates 100
 Ave. Pulses: 84, Rng/Prof Aspect@90m/s: 5.9

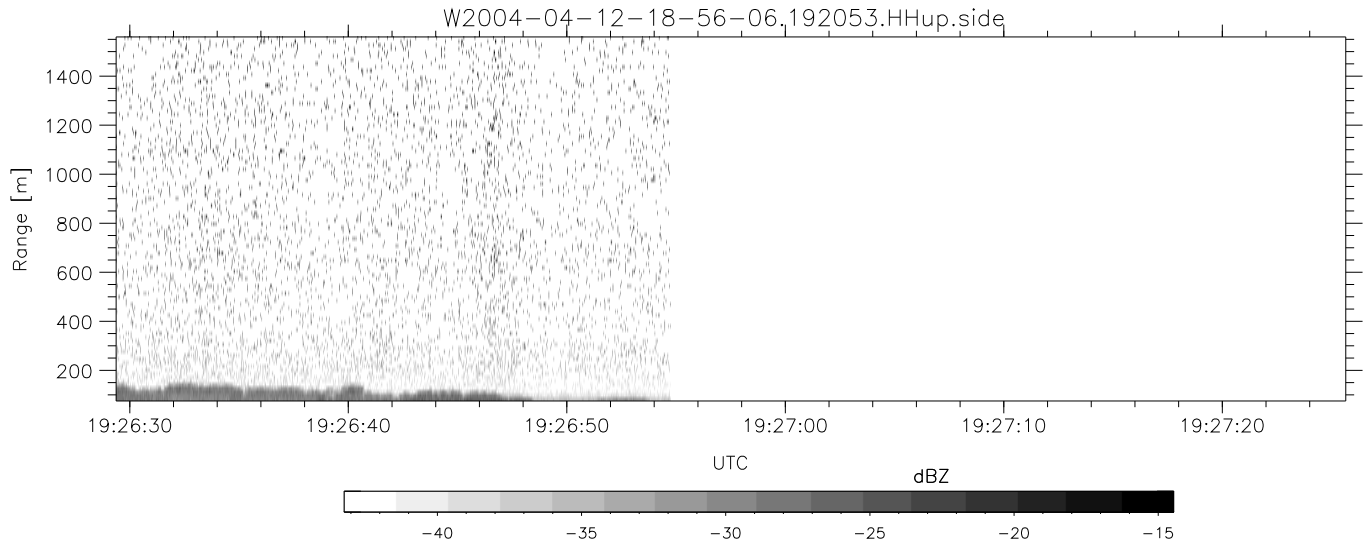
	Min	Max	Mean	Std	Varc%
hhN (dB)	-68.43	-64.89	-66.57	-76.60	9.9
vvN (dB)	-68.35	-65.21	-66.57	-76.56	10.0
hhL (dB)	-14.66	-5.86	-9.14	-15.71	22.0
vvL (dB)	2.75	6.00	5.84	-5.81	6.8
ppN (m/s)	-12.77	12.55	-0.01	4.19	
ppT (m/s)	-100.8	99.13	-0.05	33.12	
hh/vv (dB)	NaN	58.56	18.14	37.47	8560
vh/hh (dB)	-99	-99	-99	-99	-99
hv/vv (dB)	NaN	-36.14	-60.37	-49.04	1356
hnjmp (dB)			0.14		
vnjmp (dB)			0.12		



CIFEX 2004 Data (cal/250ns+2.5/100ns-3.5/500ns: 53.0,50.0)

W2004-04-12-18-56-06 - PPMAG4, IRIG:1/0/2
 UTC: 18:56:06.30 to 19:26:54.73, Dur: 1848s
 TimeLngth: 1848.45s, TimeInt: 28ms (35.4pps)
 TimeCor=-13.0s, PPS(min,max,med): 35,36,35
 Timeint/DSPdiff(mn,min,mx):28,28,28/28,28,28
 Prof: 328 to 65856, NumProf(r/t): 12815/65528
 ProcTime/Recs: 19:20:53-19:26:54/52713-65527
 ADacqtime: 25ms; DRate: 198.4KB/s; Flags: 0, 0, 0
 Pulse: 275ns, IFilt: 5.0MHz; ppPol: HH HV VV
 TxPol: HHV, PRF: 20 10 20 10 kHz, NoiseFlg:4,1
 Range: Delay 75m, Spacing 15m, Gates 100
 Ave. Pulses: 84, Rng/Prof Aspect@90m/s: 5.9

	Min	Max	Mean	Std	Varc%
hhN (dB)	-68.43	-64.89	-66.57	-76.60	9.9
vvN (dB)	-68.35	-65.21	-66.57	-76.56	10.0
hhL (dB)	-14.66	-5.86	-9.14	-15.71	22.0
vvL (dB)	2.75	6.00	5.84	-5.81	6.8
ppN (m/s)	-12.77	12.55	-0.01	4.19	
ppT (m/s)	-100.8	99.13	-0.05	33.12	
hh/vv (dB)	NaN	58.56	18.14	37.47	8560
vh/hh (dB)	-99	-99	-99	-99	-99
hv/vv (dB)	NaN	-36.14	-60.37	-49.04	1356
hnjmp (dB)			0.14		
vnjmp (dB)			0.12		



CIFEX 2004 Data (cal/250ns+2.5/100ns-3.5/500ns: 53.0,50.0)

W2004-04-12-18-56-06 - PPMAG4, IRIG:1/0/2
 UTC: 18:56:06.30 to 19:26:54.73, Dur: 1848s
 TimeLngth: 1848.45s, TimeInt: 28ms (35.4pps)
 TimeCor=-13.0s, PPS(min,max,med): 35,36,35
 Timeint/DSPdiff(mn,min,mx):28,28,28/28,28,28
 Prof: 328 to 65856, NumProf(r/t): 12815/65528
 ProcTime/Recs: 19:20:53-19:26:54/52713-65527
 ADacqtime: 25ms; DRate: 198.4KB/s; Flags: 0, 0, 0
 Pulse: 275ns, IFilt: 5.0MHz; ppPol: HH HV VV
 TxPol: HHVV, PRF: 20 10 20 10 kHz, NoiseFlg:4,1
 Range: Delay 75m, Spacing 15m, Gates 100
 Ave. Pulses: 84, Rng/Prof Aspect@90m/s: 5.9

	Min	Max	Mean	Std	Var%
hhN(dB)	-68.43	-64.89	-66.57	-76.60	9.9
vvN(dB)	-68.35	-65.21	-66.57	-76.56	10.0
hhL(dB)	-14.66	-5.86	-9.14	-15.71	22.0
vvL(dB)	2.75	6.00	5.84	-5.81	6.8
ppN(m/s)	-12.77	12.55	-0.01	4.19	
ppT(m/s)	-100.8	99.13	-0.05	33.12	
hh/vv(dB)	NaN	58.56	18.14	37.47	8560
vh/hh(dB)	-99	-99	-99	-99	-99
hv/vv(dB)	NaN	-36.14	-60.37	-49.04	1356
hnjmp(dB)			0.14		
vnjmp(dB)			0.12		