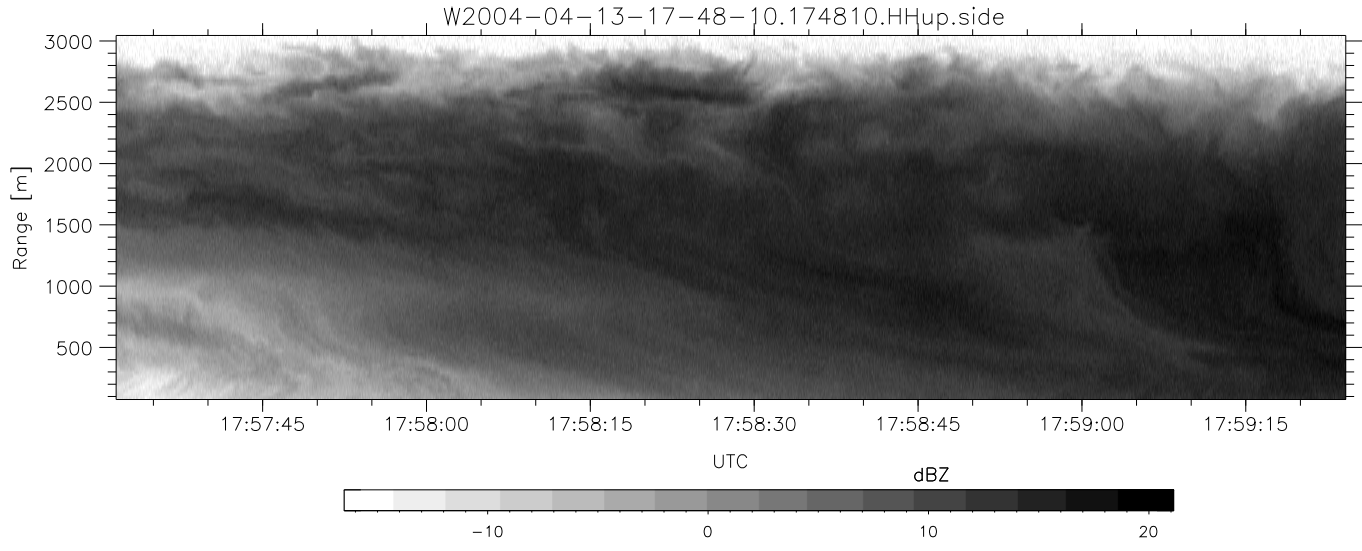
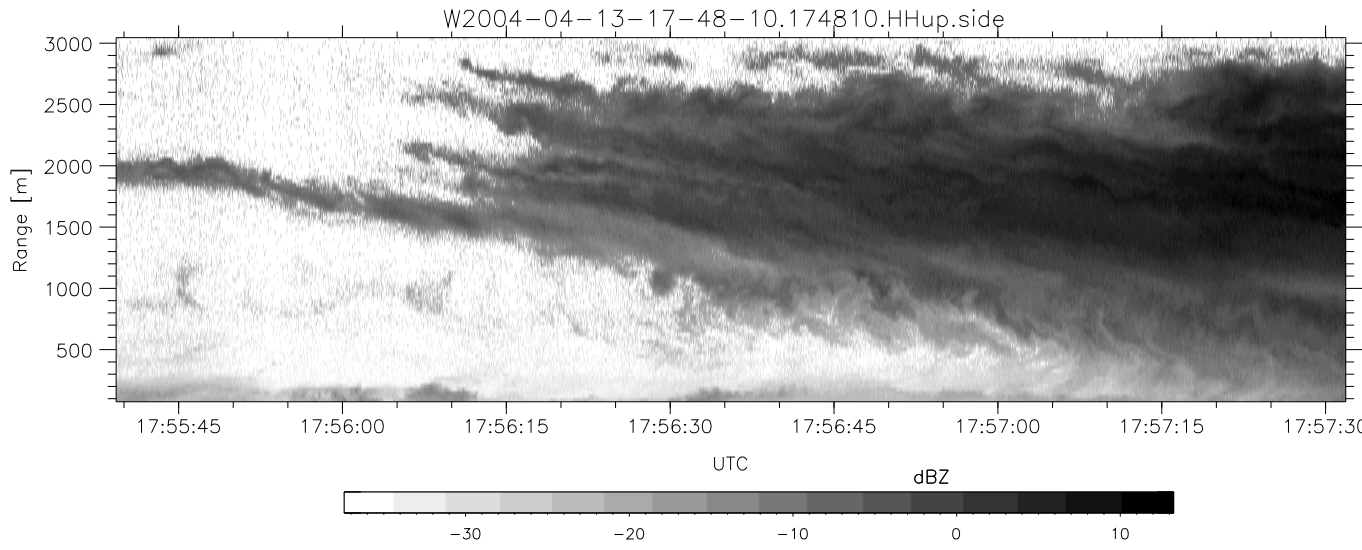
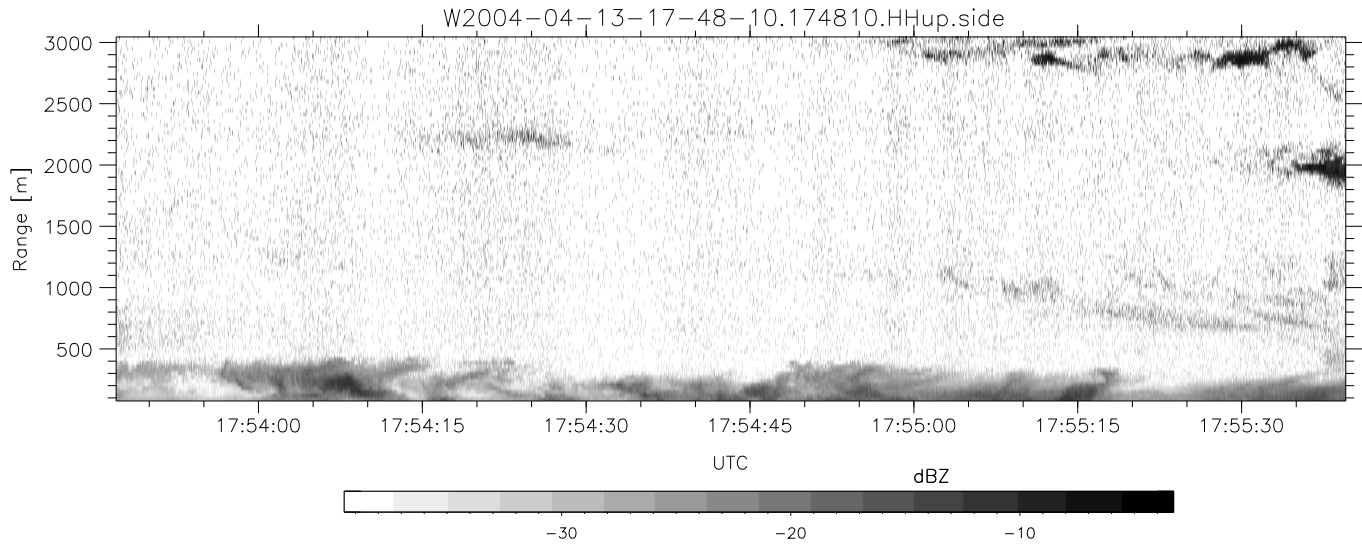


CIFEX 2004 Data (cal/250ns+2.5/100ns-3.5/500ns: 53.0,50.0)

W2004-04-13-17-48-10 - PPMAG4, IRIG:1/0/2
 UTC: 17:48:10.07 to 20:28:38.69, Dur: 9628s
 TimeLngth: 9628.88s, TimeInt: 28ms (35.4pps)
 TimeCor=-13.0s, PPS(min,max,med): 35,36,35
 Timeint/DSPdiff(mn,min,mx):28,28,37/28,28,37
 Prof: 533 to 341754, NumProf(r/t): 35142/341221
 ProcTime/Recs: 17:48:10-18:04:41/0-35141
 ADacqtime: 25ms; DRate: 198.4KB/s; Flags: 0, 0, 0
 Pulse: 275ns, IFfilt: 5.0MHz; ppPol: HH HV VV
 TxPol: HHVV, PRF: 20 10 20 10 kHz, Noiseflg:4,3
 Range: Delay 75m, Spacing 30m, Gates 100
 Ave. Pulses: 84, Rng/Prof Aspect@90m/s: 11.8

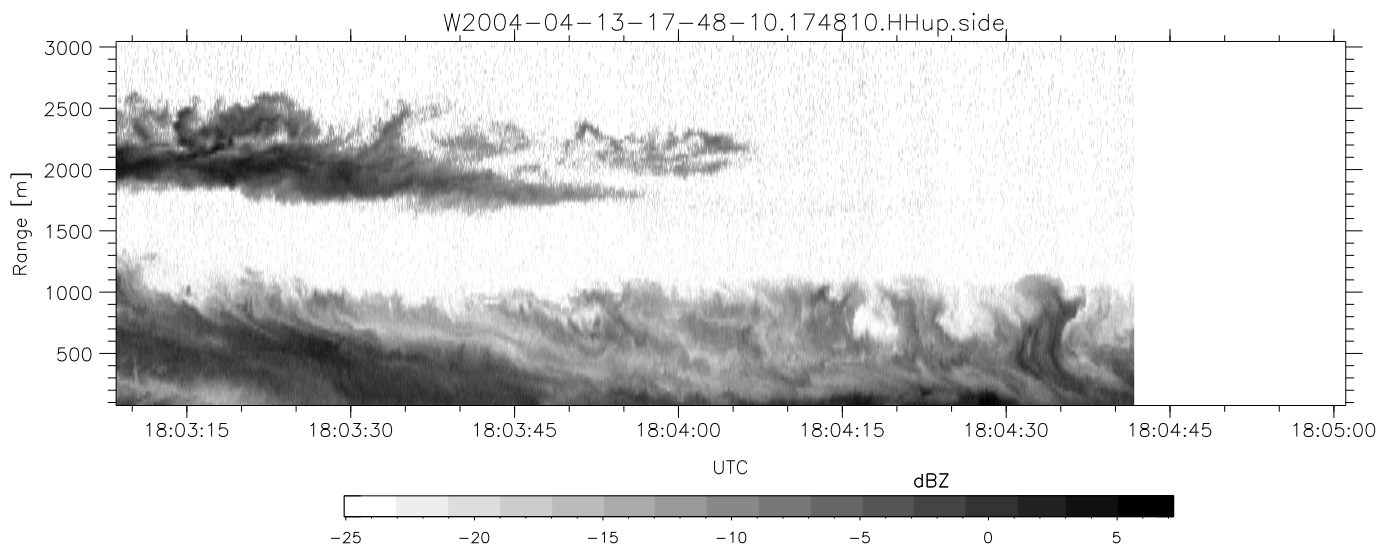
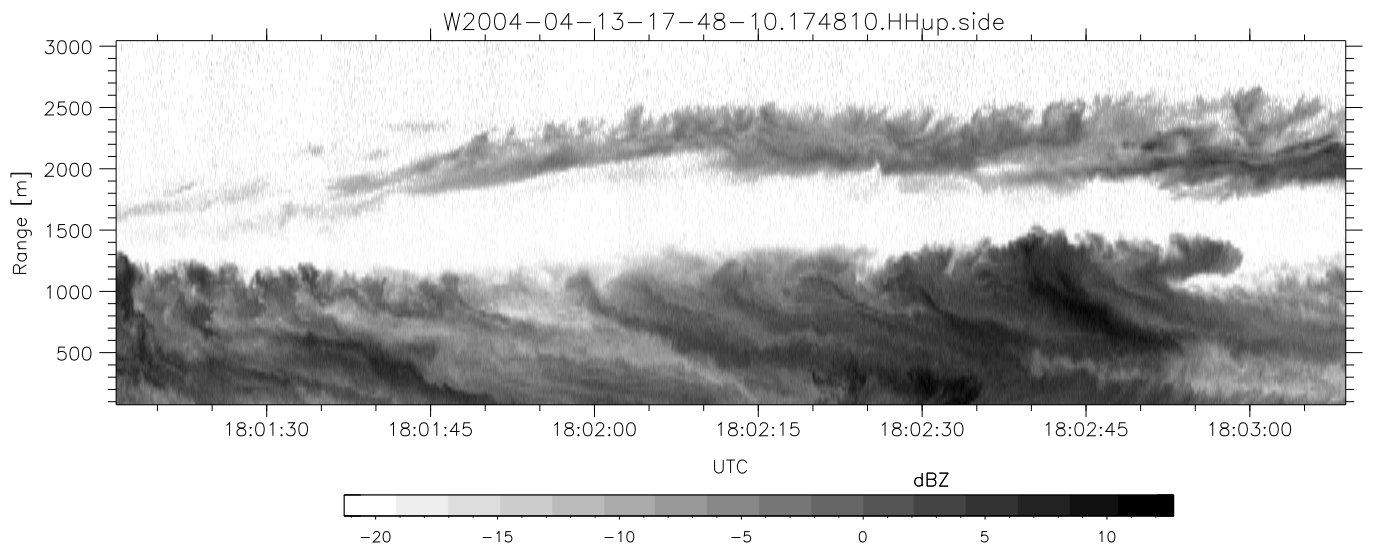
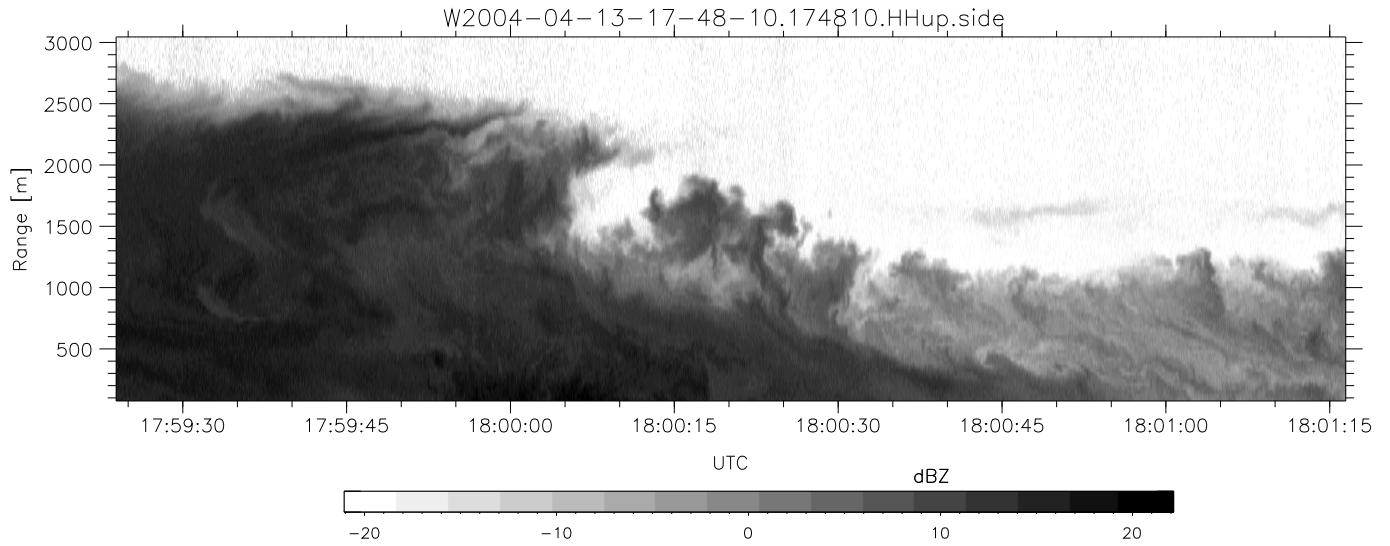
	Min	Max	Mean	Std	Varc%
hhN (dB)	-67.64	-63.86	-65.70	-75.58	10.3
vvN (dB)	-67.62	-64.02	-65.68	-75.65	10.1
hhL (dB)	-20.61	2.84	-1.31	-3.30	63.2
vvL (dB)	-12.72	6.00	4.13	1.45	54.0
ppN (m/s)	-12.60	12.45	-0.04	4.12	
ppT (m/s)	-99.52	98.37	-0.31	32.57	
hh/vv (dB)	NaN	Inf	Inf	-NaN	-NaN
vh/hh (dB)	NaN	-1.82	-33.15	-21.37	1508
hv/vv (dB)	NaN	-31.26	-47.94	-43.01	311.
hnjmp (dB)			0.14		
vnjmp (dB)			0.13		



CIFEX 2004 Data (cal/250ns+2.5/100ns-3.5/500ns: 53.0,50.0)

W2004-04-13-17-48-10 - PPMAG4, IRIG:1/0/2
 UTC: 17:48:10.07 to 20:28:38.69, Dur: 9628s
 TimeLngth: 9628.88s, TimeInt: 28ms (35.4pps)
 TimeCor=-13.0s, PPS(min,max,med): 35,36,35
 Timeint/DSPdiff(mn,min,mx):28,28,37/28,28,37
 Prof: 533 to 341754, NumProf(r/t): 35142/341221
 ProcTime/Recs: 17:48:10-18:04:41/0-35141
 ADacqtime: 25ms; DRate: 198.4KB/s; Flags: 0, 0, 0
 Pulse: 275ns, IFilt: 5.0MHz; ppPol: HH HV VV
 TxPol: HHVV, PRF: 20 10 20 10 kHz, Noiseflg:4,3
 Range: Delay 75m, Spacing 30m, Gates 100
 Ave. Pulses: 84, Rng/Prof Aspect@90m/s: 11.8

	Min	Max	Mean	Std	Varc%
hhN(dB)	-67.64	-63.86	-65.70	-75.58	10.3
vvN(dB)	-67.62	-64.02	-65.68	-75.65	10.1
hhL(dB)	-20.61	2.84	-1.31	-3.30	63.2
vvL(dB)	-12.72	6.00	4.13	1.45	54.0
ppN(m/s)	-12.60	12.45	-0.04	4.12	
ppT(m/s)	-99.52	98.37	-0.31	32.57	
hh/vv(dB)	NaN	Inf	Inf	-NaN	-NaN
vh/hh(dB)	NaN	-1.82	-33.15	-21.37	1508
hv/vv(dB)	NaN	-31.26	-47.94	-43.01	311.
hnjmp(dB)			0.14		
vnjmp(dB)			0.13		



CIFEX 2004 Data (cal/250ns+2.5/100ns-3.5/500ns: 53.0,50.0)

W2004-04-13-17-48-10 - PPMAG4, IRIG:1/0/2
 UTC: 17:48:10.07 to 20:28:38.69, Dur: 9628s
 TimeLngth: 9628.88s, TimeInt: 28ms (35.4pps)
 TimeCor=-13.0s, PPS(min,max,med): 35,36,35
 Timeint/DSPdiff(mn,min,mx):28,28,37/28,28,37
 Prof: 533 to 341754, NumProf(r/t): 35142/341221
 ProcTime/Recs: 17:48:10-18:04:41/0-35141
 ADacqtime: 25ms; DRate: 198.4KB/s; Flags: 0, 0, 0
 Pulse: 275ns, IFfilt: 5.0MHz; ppPol: HH HV VV
 TxPol: HHVV, PRF: 20 10 20 10 kHz, Noiseflg:4,3
 Range: Delay 75m, Spacing 30m, Gates 100
 Ave. Pulses: 84, Rng/Prof Aspect@90m/s: 11.8

	Min	Max	Mean	Std	Varc%
hhN (dB)	-67.64	-63.86	-65.70	-75.58	10.3
vvN (dB)	-67.62	-64.02	-65.68	-75.65	10.1
hhL (dB)	-20.61	2.84	-1.31	-3.30	63.2
vvL (dB)	-12.72	6.00	4.13	1.45	54.0
ppN (m/s)	-12.60	12.45	-0.04	4.12	
ppT (m/s)	-99.52	98.37	-0.31	32.57	
hh/vv (dB)	NaN	Inf	Inf	-NaN	-NaN
vh/hh (dB)	NaN	-1.82	-33.15	-21.37	1508
hv/vv (dB)	NaN	-31.26	-47.94	-43.01	311.
hn_jmp (dB)			0.14		
vn_jmp (dB)			0.13		