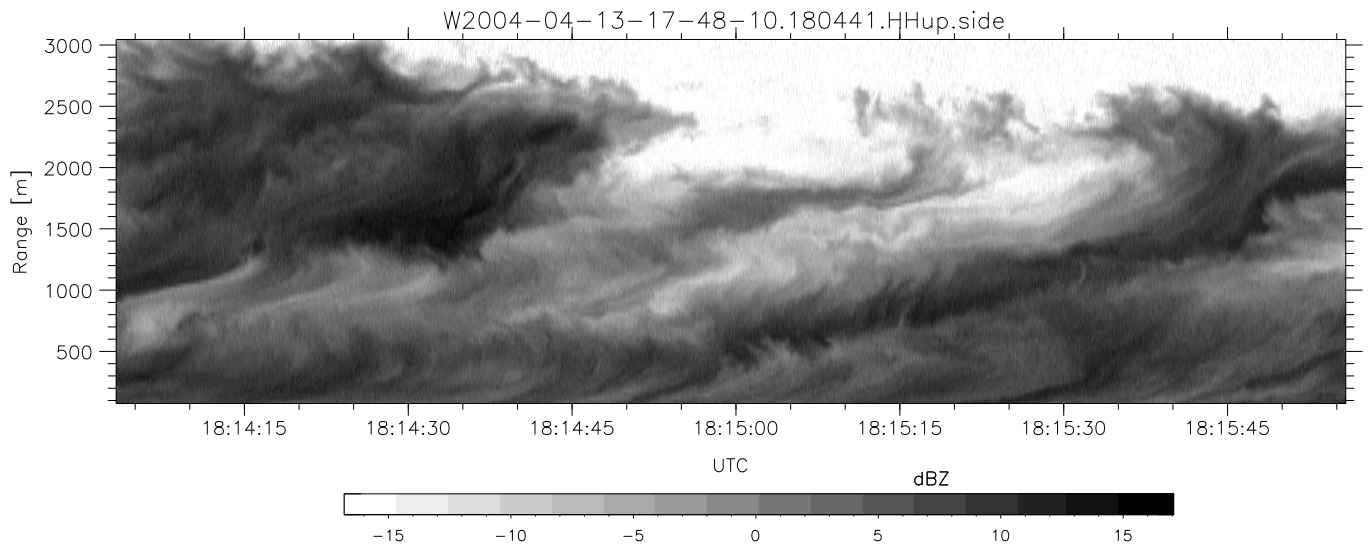
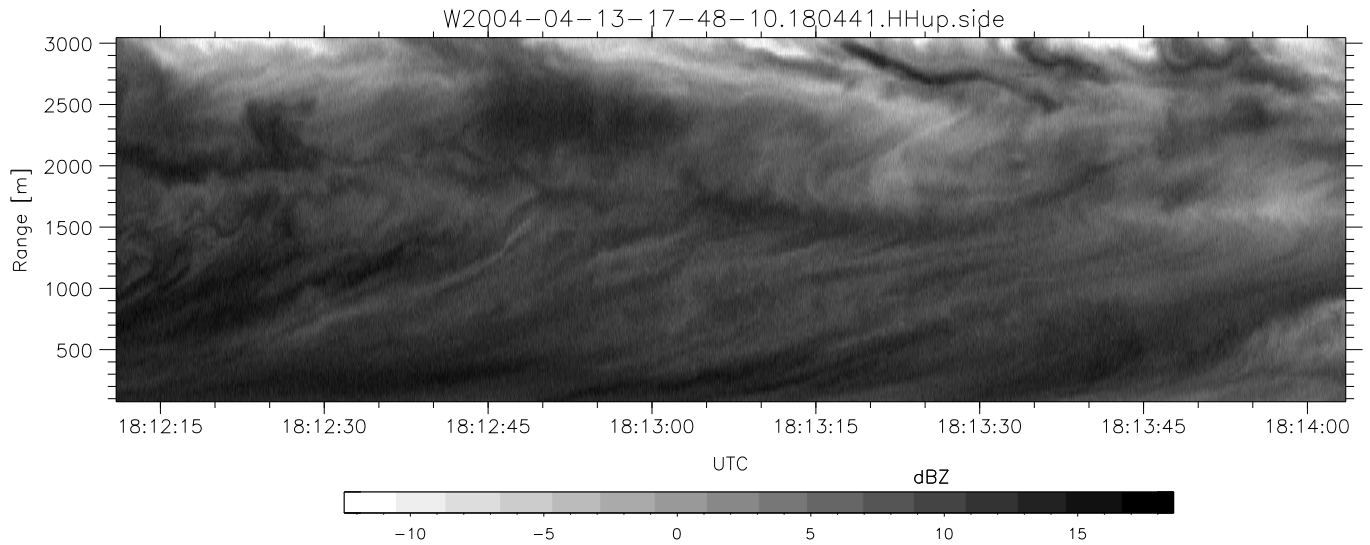
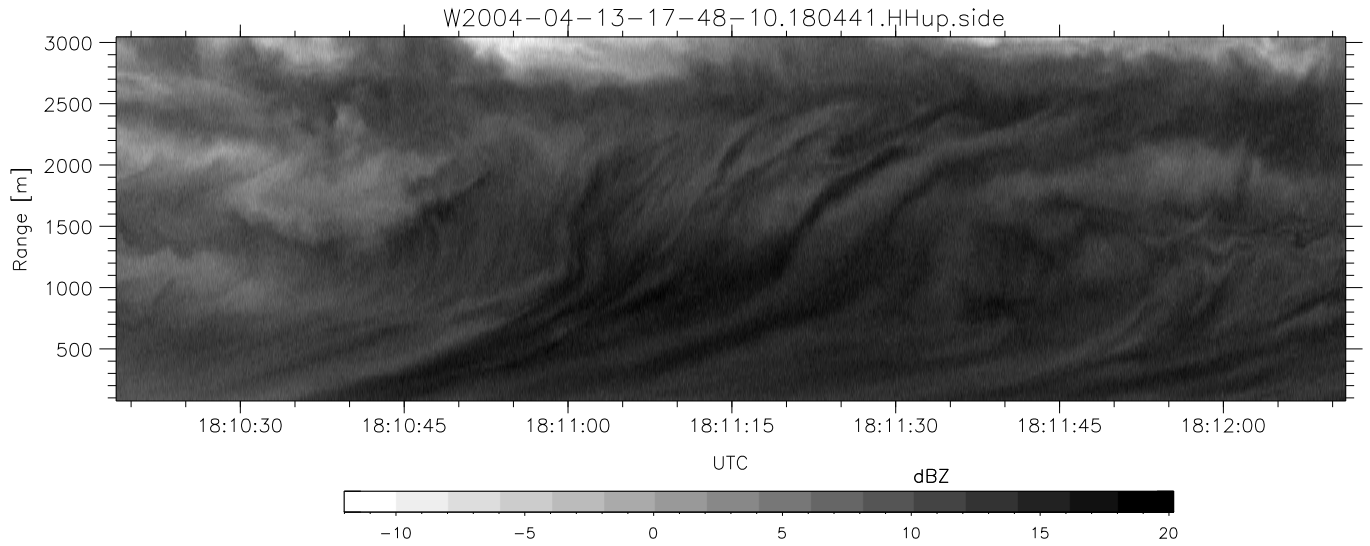


CIFEX 2004 Data (cal/250ns+2.5/100ns-3.5/500ns: 53.0,50.0)

W2004-04-13-17-48-10 - PPMAG4, IRIG:1/0/2
 UTC: 17:48:10.07 to 20:28:38.69, Dur: 9628s
 TimeLngth: 9628.56s, TimeInt: 28ms (35.4pps)
 TimeCor=-13.0s, PPS(min,max,med): 35,36,35
 Timeint/DSPdiff(mn,min,mx):28,28,40/28,28,40
 Prof: 533 to 341754, NumProf(r/t): 35142/341221
 ProcTime/Recs: 18:04:41-18:21:13/35142-70283
 ADacqtime: 25ms; DRate: 198.4KB/s; Flags: 0, 0, 0
 Pulse: 275ns, IFfilt: 5.0MHz; ppPol: HH HV VV
 TxPol: HHVV, PRF: 20 10 20 10 kHz, Noiseflg:1,2
 Range: Delay 75m, Spacing 30m, Gates 100
 Ave. Pulses: 84, Rng/Prof Aspect@90m/s: 11.8

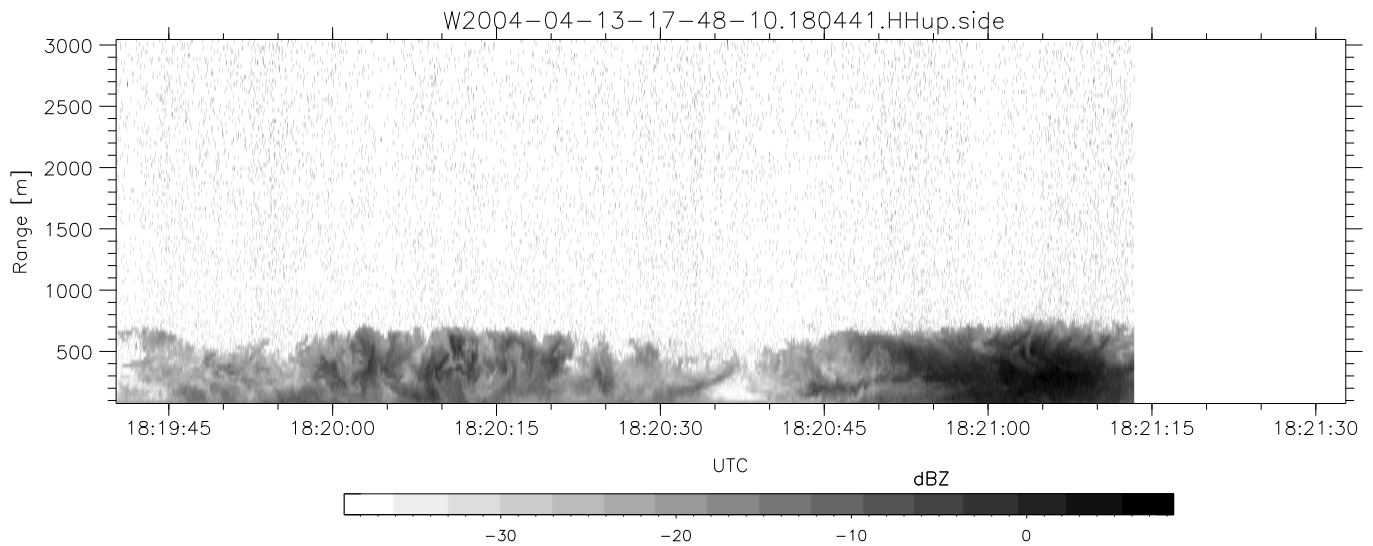
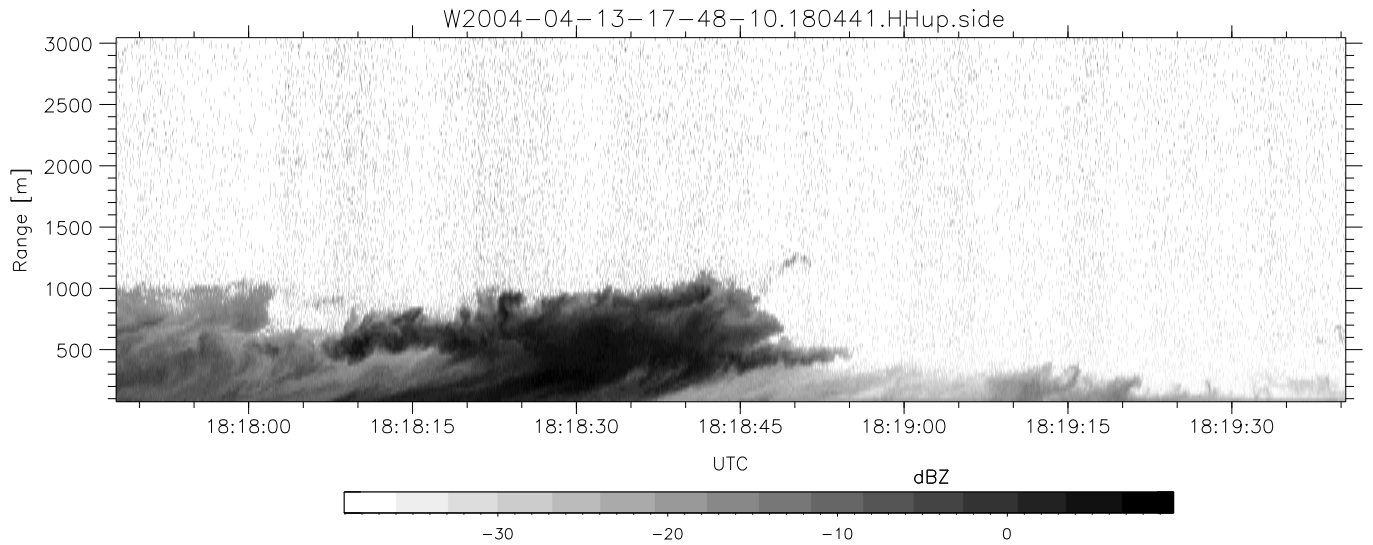
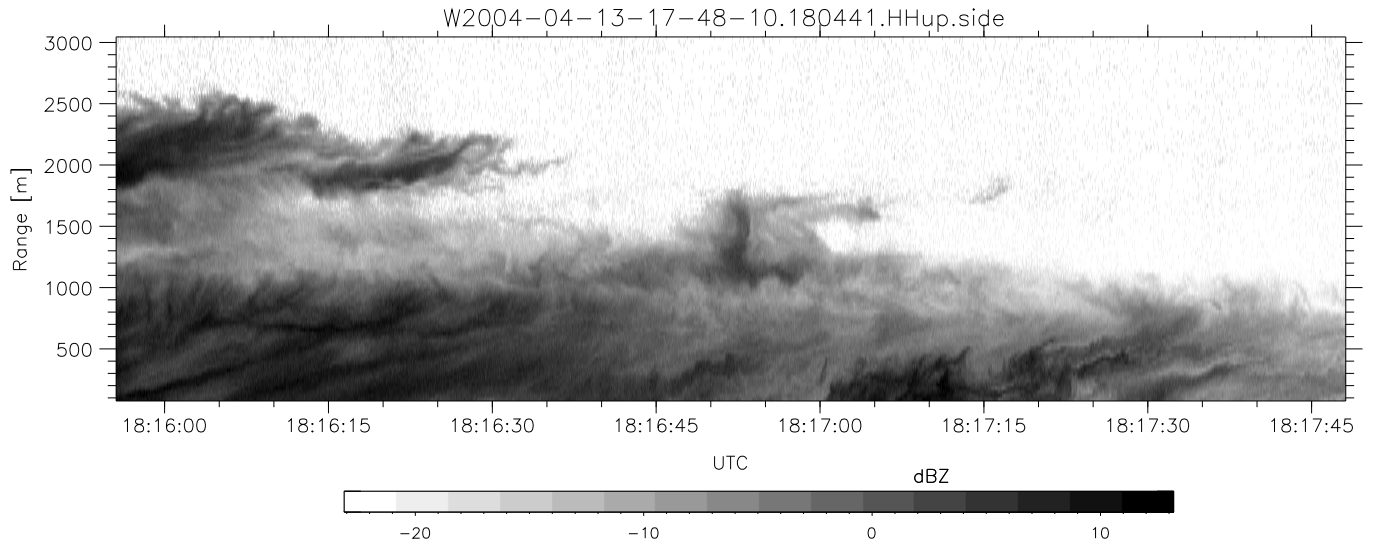
| | Min | Max | Mean | Std | Varc% |
|-------------|--------|--------|--------|--------|-------|
| hhN (dB) | -67.79 | -64.06 | -65.82 | -75.73 | 10.2 |
| vvN (dB) | -67.95 | -64.20 | -65.83 | -75.68 | 10.4 |
| hhL (dB) | -20.11 | 1.83 | -2.39 | -3.10 | 84.9 |
| vvL (dB) | -14.55 | 6.00 | 0.92 | -1.24 | 60.9 |
| ppN (m/s) | -12.64 | 12.66 | -0.03 | 4.14 | |
| ppT (m/s) | -99.83 | 100.00 | -0.22 | 32.68 | |
| hh/vv (dB) | NaN | 72.44 | 11.46 | 45.93 | 2800 |
| vh/hh (dB) | NaN | -10.48 | -38.75 | -29.70 | 803. |
| hv/vv (dB) | NaN | -33.14 | -47.04 | -43.20 | 242. |
| hn_jmp (dB) | | | 0.14 | | |
| vn_jmp (dB) | | | 0.14 | | |



CIFEX 2004 Data (cal/250ns+2.5/100ns-3.5/500ns: 53.0,50.0)

W2004-04-13-17-48-10 - PPMAG4, IRIG:1/0/2
 UTC: 17:48:10.07 to 20:28:38.69, Dur: 9628s
 TimeLngth: 9628.56s, TimeInt: 28ms (35.4pps)
 TimeCor=-13.0s, PPS(min,max,med): 35,36,35
 Timeint/DSPdiff(mn,min,mx):28,28,40/28,28,40
 Prof: 533 to 341754, NumProf(r/t): 35142/341221
 ProcTime/Recs: 18:04:41-18:21:13/35142-70283
 ADacqtime: 25ms; DRate: 198.4KB/s; Flags: 0, 0, 0
 Pulse: 275ns, IFfilt: 5.0MHz; ppPol: HH HV VV
 TxPol: HHVV, PRF: 20 10 20 10 kHz, Noiseflg:1,2
 Range: Delay 75m, Spacing 30m, Gates 100
 Ave. Pulses: 84, Rng/Prof Aspect@90m/s: 11.8

| | Min | Max | Mean | Std | Varc% |
|------------|--------|--------|--------|--------|-------|
| hhN (dB) | -67.79 | -64.06 | -65.82 | -75.73 | 10.2 |
| vvN (dB) | -67.95 | -64.20 | -65.83 | -75.68 | 10.4 |
| hhL (dB) | -20.11 | 1.83 | -2.39 | -3.10 | 84.9 |
| vvL (dB) | -14.55 | 6.00 | 0.92 | -1.24 | 60.9 |
| ppN (m/s) | -12.64 | 12.66 | -0.03 | 4.14 | |
| ppT (m/s) | -99.83 | 100.00 | -0.22 | 32.68 | |
| hh/vv (dB) | NaN | 72.44 | 11.46 | 45.93 | 2800 |
| vh/hh (dB) | NaN | -10.48 | -38.75 | -29.70 | 803. |
| hv/vv (dB) | NaN | -33.14 | -47.04 | -43.20 | 242. |
| hnjmp (dB) | | | 0.14 | | |
| vnjmp (dB) | | | 0.14 | | |



CIFEX 2004 Data (cal/250ns+2.5/100ns-3.5/500ns: 53.0,50.0)

W2004-04-13-17-48-10 - PPMAG4, IRIG:1/0/2
 UTC: 17:48:10.07 to 20:28:38.69, Dur: 9628s
 TimeLngth: 9628.56s, TimeInt: 28ms (35.4pps)
 TimeCor=-13.0s, PPS(min,max,med): 35,36,35
 Timeint/DSPdiff(mn,min,mx):28,28,40/28,28,40
 Prof: 533 to 341754, NumProf(r/t): 35142/341221
 ProcTime/Recs: 18:04:41-18:21:13/35142-70283
 ADacqtime: 25ms; DRate: 198.4KB/s; Flags: 0, 0, 0
 Pulse: 275ns, IFfilt: 5.0MHz; ppPol: HH HV VV
 TxPol: HHVV, PRF: 20 10 20 10 kHz, NoiseFlg:1,2
 Range: Delay 75m, Spacing 30m, Gates 100
 Ave. Pulses: 84, Rng/Prof Aspect@90m/s: 11.8

| | Min | Max | Mean | Std | Varc% |
|-------------|--------|--------|--------|--------|-------|
| hhN (dB) | -67.79 | -64.06 | -65.82 | -75.73 | 10.2 |
| vvN (dB) | -67.95 | -64.20 | -65.83 | -75.68 | 10.4 |
| hhL (dB) | -20.11 | 1.83 | -2.39 | -3.10 | 84.9 |
| vvL (dB) | -14.55 | 6.00 | 0.92 | -1.24 | 60.9 |
| ppN (m/s) | -12.64 | 12.66 | -0.03 | 4.14 | |
| ppT (m/s) | -99.83 | 100.00 | -0.22 | 32.68 | |
| hh/vv (dB) | NaN | 72.44 | 11.46 | 45.93 | 2800 |
| vh/hh (dB) | NaN | -10.48 | -38.75 | -29.70 | 803. |
| hv/vv (dB) | NaN | -33.14 | -47.04 | -43.20 | 242. |
| hn_jmp (dB) | | | 0.14 | | |
| vn_jmp (dB) | | | 0.14 | | |