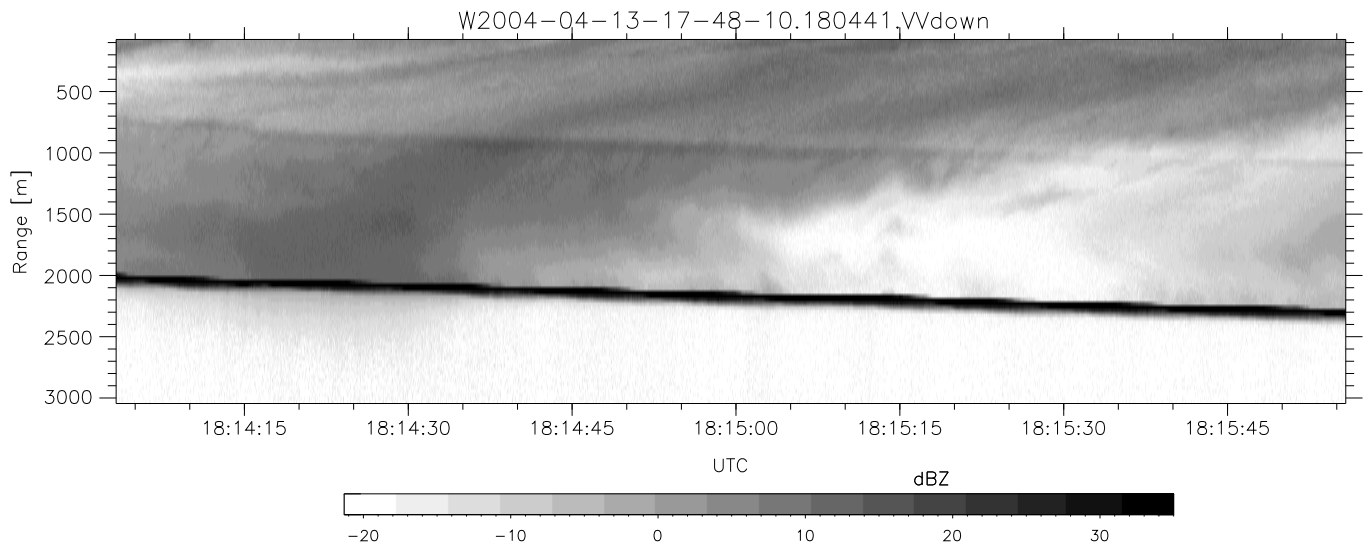
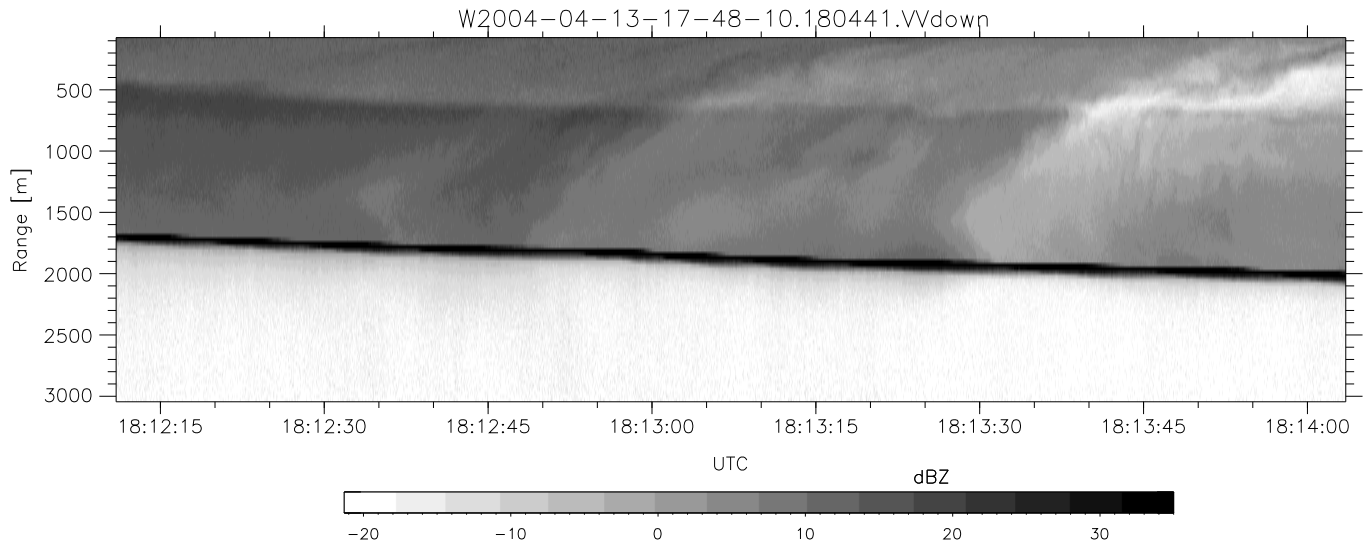
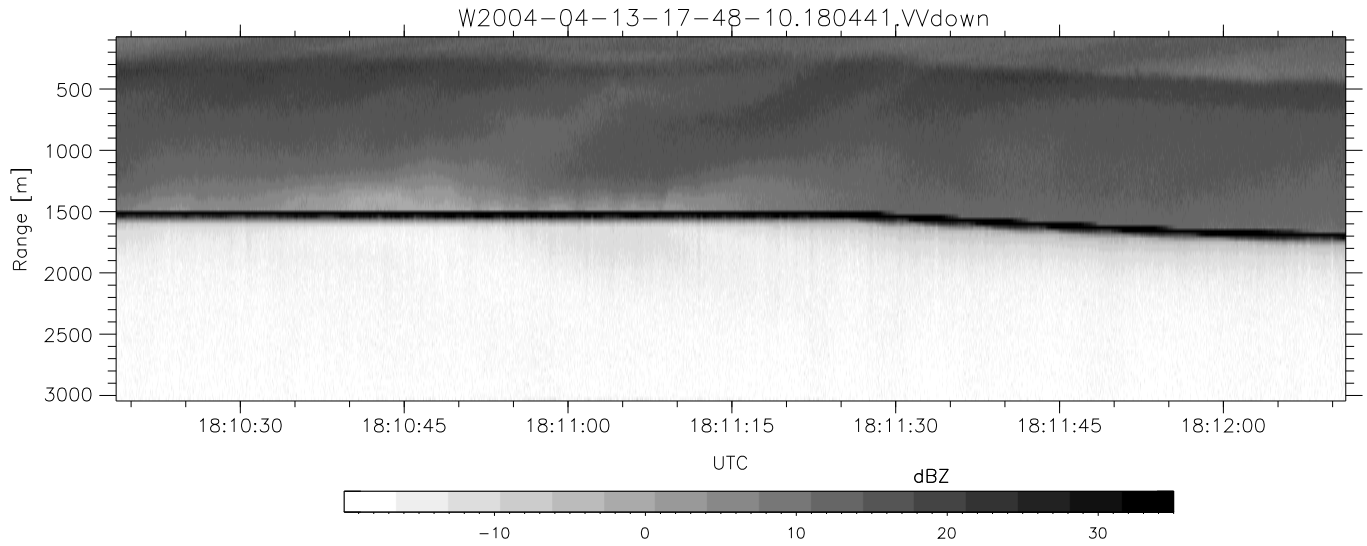


CIFEX 2004 Data (cal/250ns+2.5/100ns-3.5/500ns: 53.0,50.0)

W2004-04-13-17-48-10 - PPMAG4, IRIG:1/0/2
 UTC: 17:48:10.07 to 20:28:38.69, Dur: 9628s
 TimeLngth: 9628.56s, TimeInt: 28ms (35.4pps)
 TimeCor=-13.0s, PPS(min,max,med): 35,36,35
 Timeint/DSPdiff(mn,min,mx):28,28,40/28,28,40
 Prof: 533 to 341754, NumProf(r/t): 35142/341221
 ProcTime/Recs: 18:04:41-18:21:13/35142-70283
 ADacqtime: 25ms; DRate: 198.4KB/s; Flags: 0, 0, 0
 Pulse: 275ns, IFfilt: 5.0MHz; ppPol: HH HV VV
 TxPol: HHVV, PRF: 20 10 20 10 kHz, Noiseflg:1,2
 Range: Delay 75m, Spacing 30m, Gates 100
 Ave. Pulses: 84, Rng/Prof Aspect@90m/s: 11.8

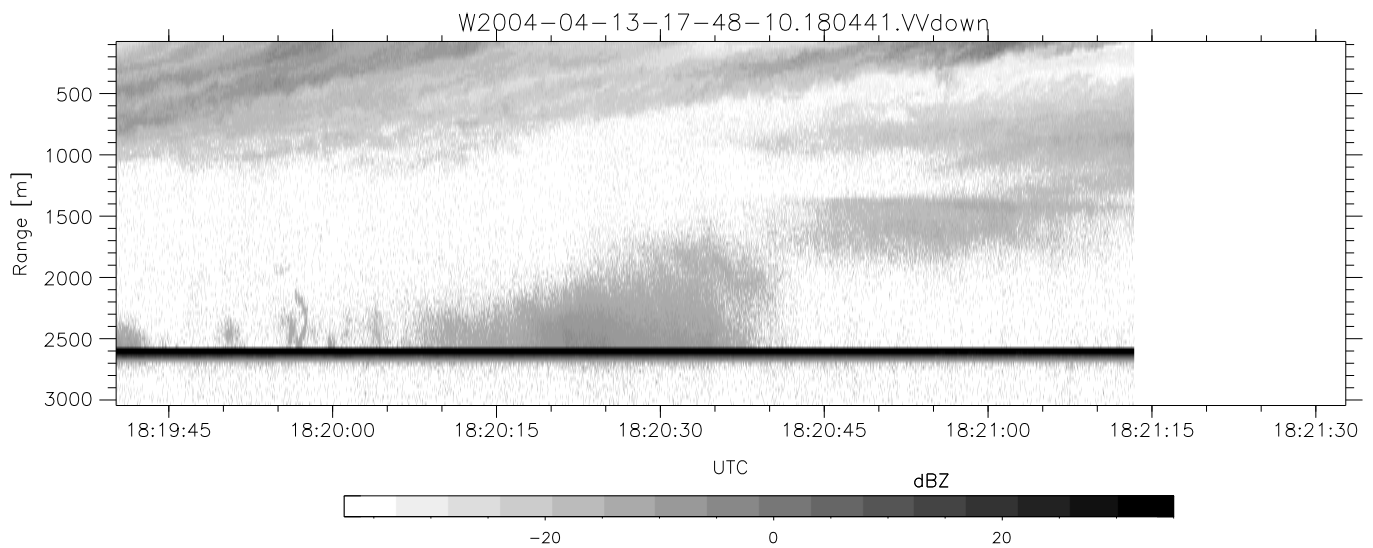
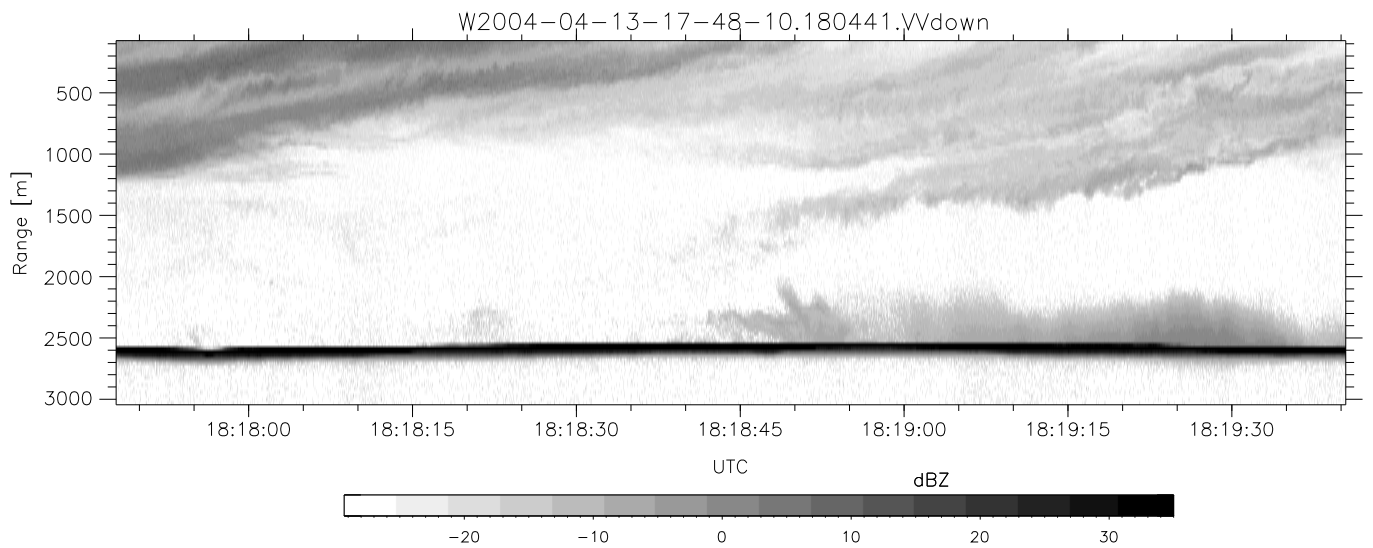
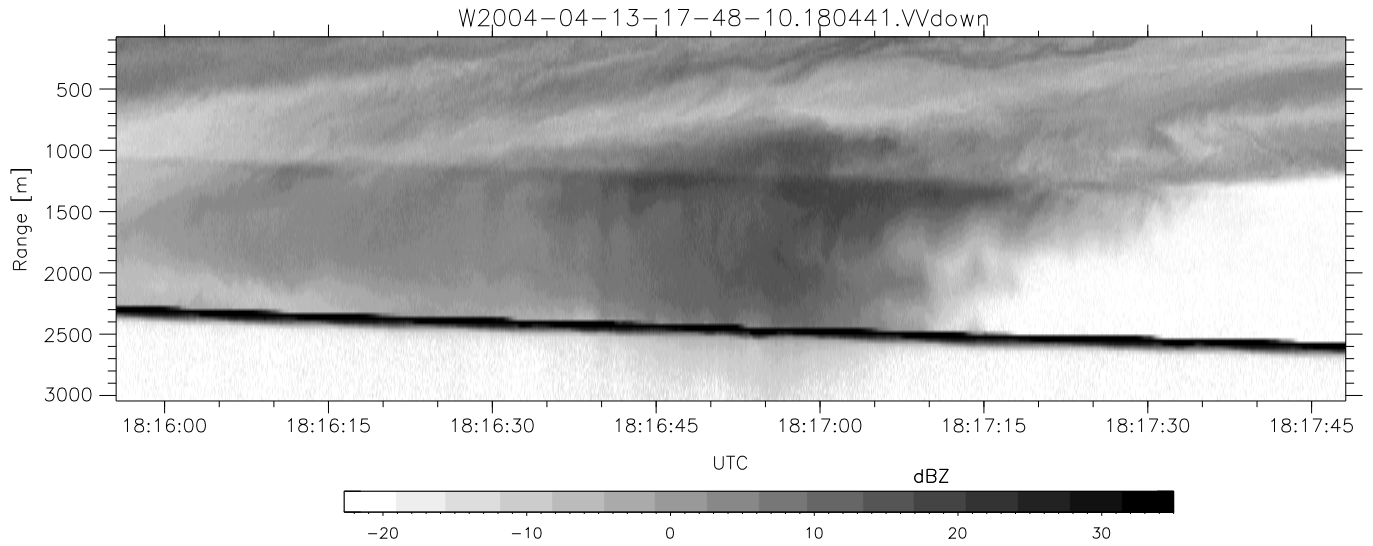
	Min	Max	Mean	Std	Varc%
hhN (dB)	-67.79	-64.06	-65.82	-75.73	10.2
vvN (dB)	-67.95	-64.20	-65.83	-75.68	10.4
hhL (dB)	-20.11	1.83	-2.39	-3.10	84.9
vvL (dB)	-14.55	6.00	0.92	-1.24	60.9
ppN (m/s)	-12.64	12.66	-0.03	4.14	
ppT (m/s)	-99.83	100.00	-0.22	32.68	
hh/vv (dB)	NaN	72.44	11.46	45.93	2800
vh/hh (dB)	NaN	-10.48	-38.75	-29.70	803.
hv/vv (dB)	NaN	-33.14	-47.04	-43.20	242.
hn_jmp (dB)			0.14		
vn_jmp (dB)			0.14		



CIFEX 2004 Data (cal/250ns+2.5/100ns-3.5/500ns: 53.0,50.0)

W2004-04-13-17-48-10 - PPMAG4, IRIG:1/0/2
 UTC: 17:48:10.07 to 20:28:38.69, Dur: 9628s
 TimeLngth: 9628.56s, TimeInt: 28ms (35.4pps)
 TimeCor=-13.0s, PPS(min,max,med): 35,36,35
 Timeint/DSPdiff(mn,min,mx):28,28,40/28,28,40
 Prof: 533 to 341754, NumProf(r/t): 35142/341221
 ProcTime/Recs: 18:04:41-18:21:13/35142-70283
 ADacqtime: 25ms; DRate: 198.4KB/s; Flags: 0, 0, 0
 Pulse: 275ns, IFilt: 5.0MHz; ppPol: HH HV VV
 TxPol: HHVV, PRF: 20 10 20 10 kHz, NoiseFlg:1,2
 Range: Delay 75m, Spacing 30m, Gates 100
 Ave. Pulses: 84, Rng/Prof Aspect@90m/s: 11.8

	Min	Max	Mean	Std	Varc%
hhN (dB)	-67.79	-64.06	-65.82	-75.73	10.2
vvN (dB)	-67.95	-64.20	-65.83	-75.68	10.4
hhL (dB)	-20.11	1.83	-2.39	-3.10	84.9
vvL (dB)	-14.55	6.00	0.92	-1.24	60.9
ppN (m/s)	-12.64	12.66	-0.03	4.14	
ppT (m/s)	-99.83	100.00	-0.22	32.68	
hh/vv (dB)	NaN	72.44	11.46	45.93	2800
vh/hh (dB)	NaN	-10.48	-38.75	-29.70	803.
hv/vv (dB)	NaN	-33.14	-47.04	-43.20	242.
hn_jmp (dB)			0.14		
vn_jmp (dB)			0.14		



CIFEX 2004 Data (cal/250ns+2.5/100ns-3.5/500ns: 53.0,50.0)

W2004-04-13-17-48-10 - PPMAG4, IRIG:1/0/2
 UTC: 17:48:10.07 to 20:28:38.69, Dur: 9628s
 TimeLngth: 9628.56s, TimeInt: 28ms (35.4pps)
 TimeCor=-13.0s, PPS(min,max,med): 35,36,35
 Timeint/DSPdiff(mn,min,mx):28,28,40/28,28,40
 Prof: 533 to 341754, NumProf(r/t): 35142/341221
 ProcTime/Recs: 18:04:41-18:21:13/35142-70283
 ADacqtime: 25ms; DRate: 198.4KB/s; Flags: 0, 0, 0
 Pulse: 275ns, IFfilt: 5.0MHz; ppPol: HH HV VV
 TxPol: HHV, PRF: 20 10 20 10 kHz, Noiseflg:1,2
 Range: Delay 75m, Spacing 30m, Gates 100
 Ave. Pulses: 84, Rng/Prof Aspect@90m/s: 11.8

	Min	Max	Mean	Std	Varc%
hhN (dB)	-67.79	-64.06	-65.82	-75.73	10.2
vvN (dB)	-67.95	-64.20	-65.83	-75.68	10.4
hhL (dB)	-20.11	1.83	-2.39	-3.10	84.9
vvL (dB)	-14.55	6.00	0.92	-1.24	60.9
ppN (m/s)	-12.64	12.66	-0.03	4.14	
ppT (m/s)	-99.83	100.00	-0.22	32.68	
hh/vv (dB)	NaN	72.44	11.46	45.93	2800
vh/hh (dB)	NaN	-10.48	-38.75	-29.70	803.
hv/vv (dB)	NaN	-33.14	-47.04	-43.20	242.
hn_jmp (dB)			0.14		
vn_jmp (dB)			0.14		