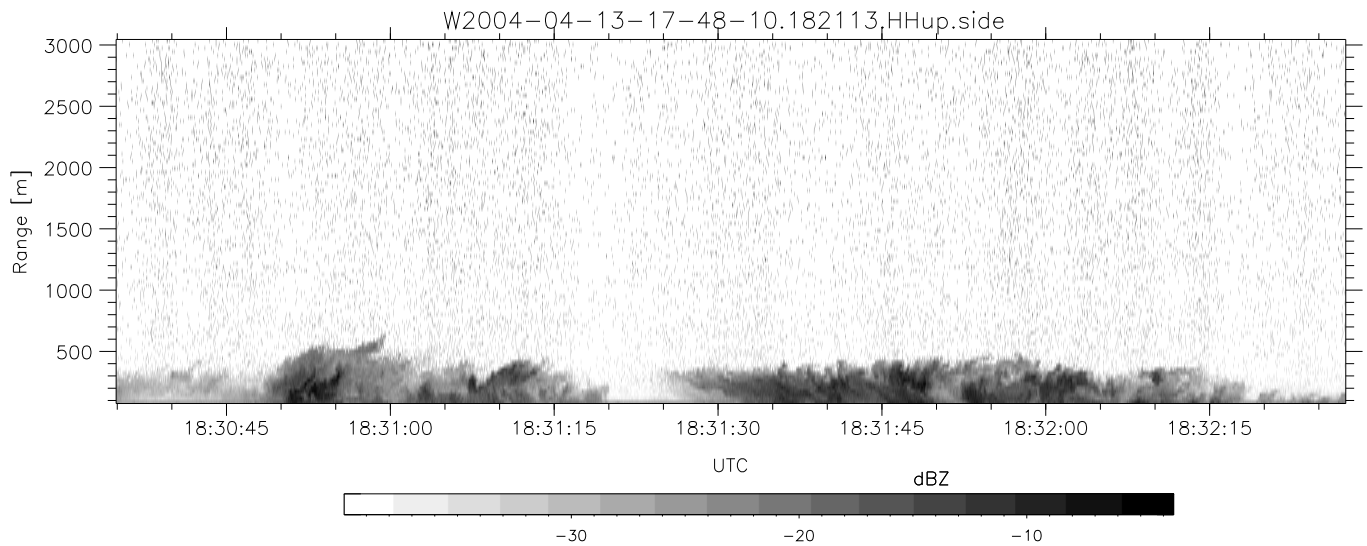
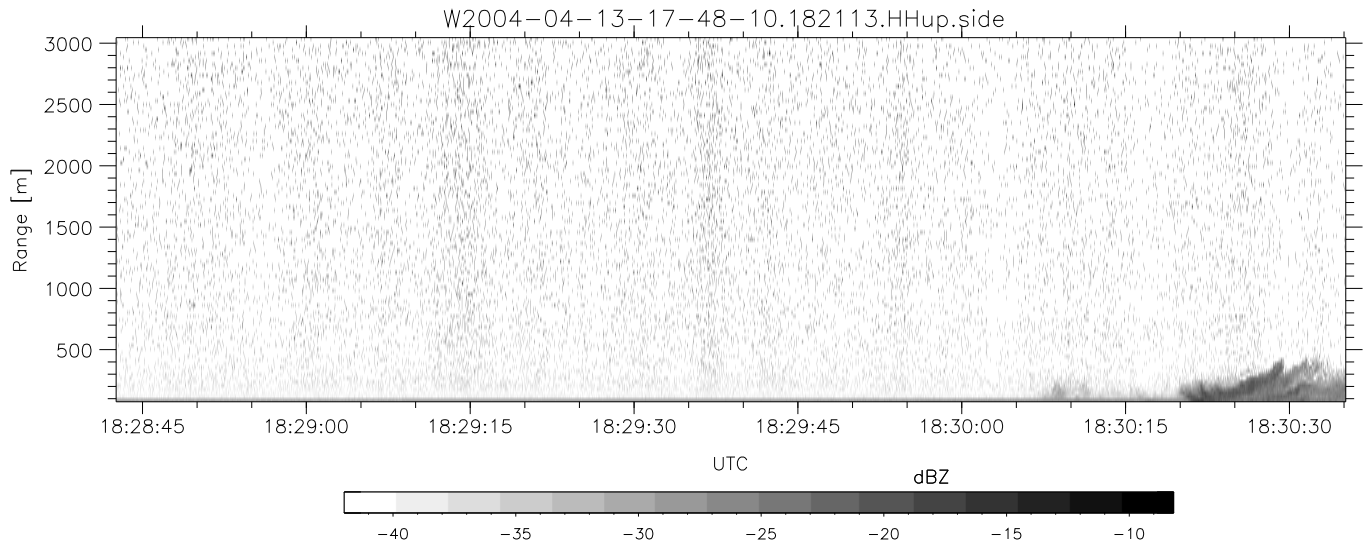
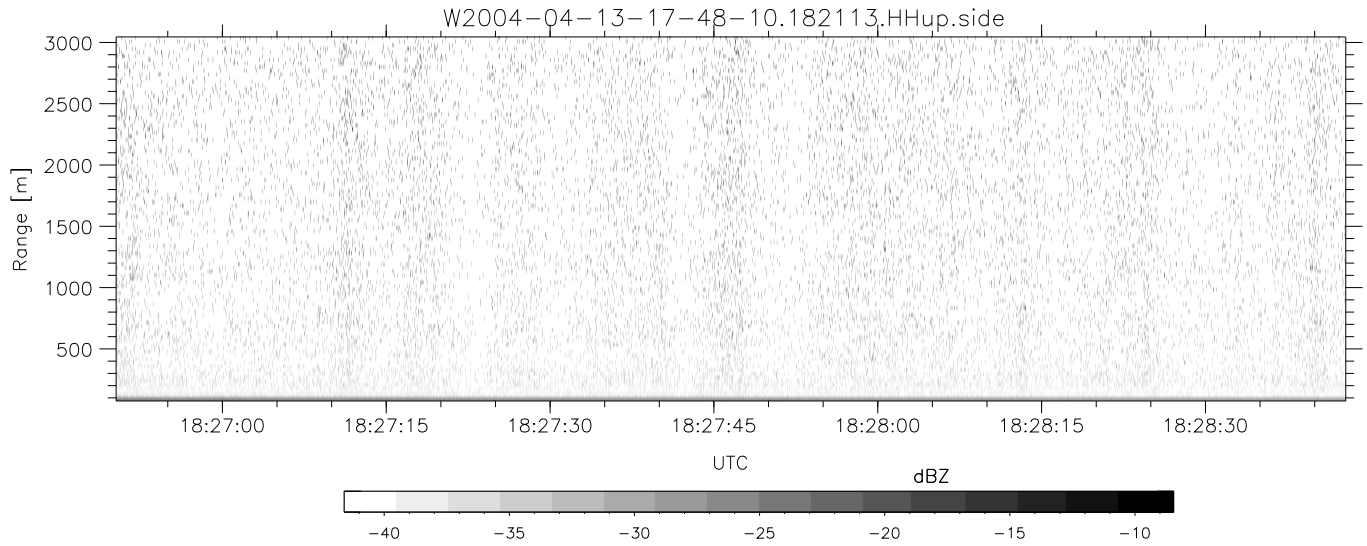


CIFEX 2004 Data (cal/250ns+2.5/100ns-3.5/500ns: 53.0,50.0)

W2004-04-13-17-48-10 - PPMAG4, IRIG:1/0/2  
 UTC: 17:48:10.07 to 20:28:38.69, Dur: 9628s  
 TimeLngth: 9628.56s, TimeInt: 28ms (35.4pps)  
 TimeCor=-13.0s, PPS(min,max,med): 35,36,35  
 Timeint/DSPdiff(mn,min,mx):28,28,38/28,28,35  
 Prof: 533 to 341754, NumProf(r/t): 35142/341221  
 ProcTime/Recs: 18:21:13-18:37:45/70284-105425  
 ADacqtime: 25ms; DRate: 198.4KB/s; Flags: 0, 0, 0  
 Pulse: 275ns, IFilt: 5.0MHz; ppPol: HH HV VV  
 TxPol: HHVV, PRF: 20 10 20 10 kHz, NoiseFlg:2,2  
 Range: Delay 75m, Spacing 30m, Gates 100  
 Ave. Pulses: 84, Rng/Prof Aspect@90m/s: 11.8

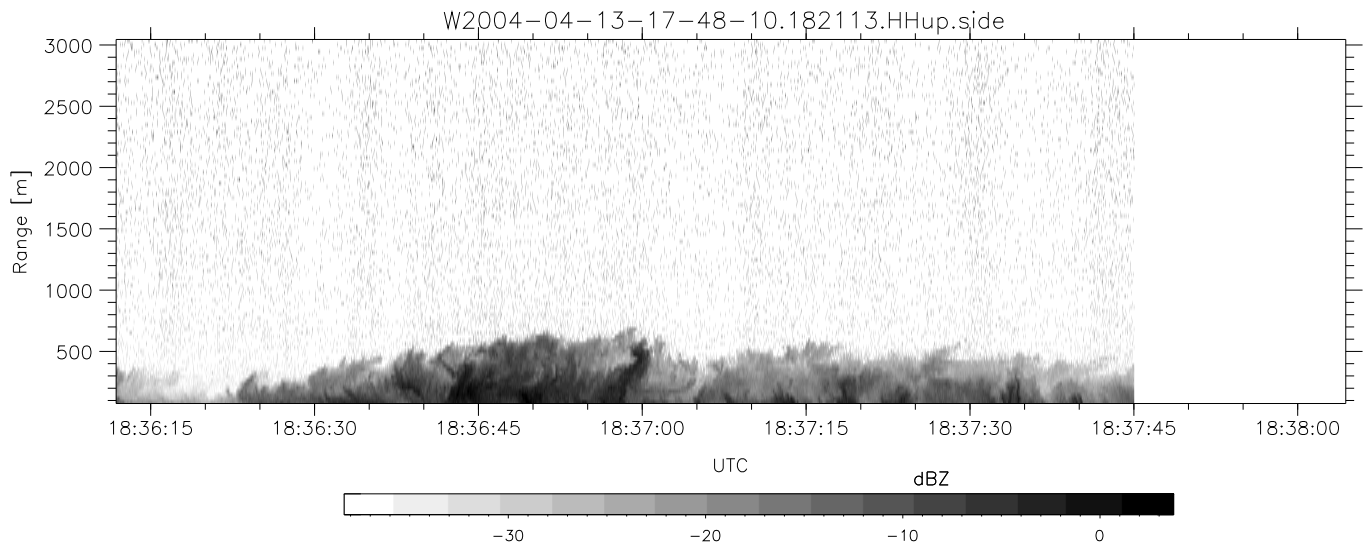
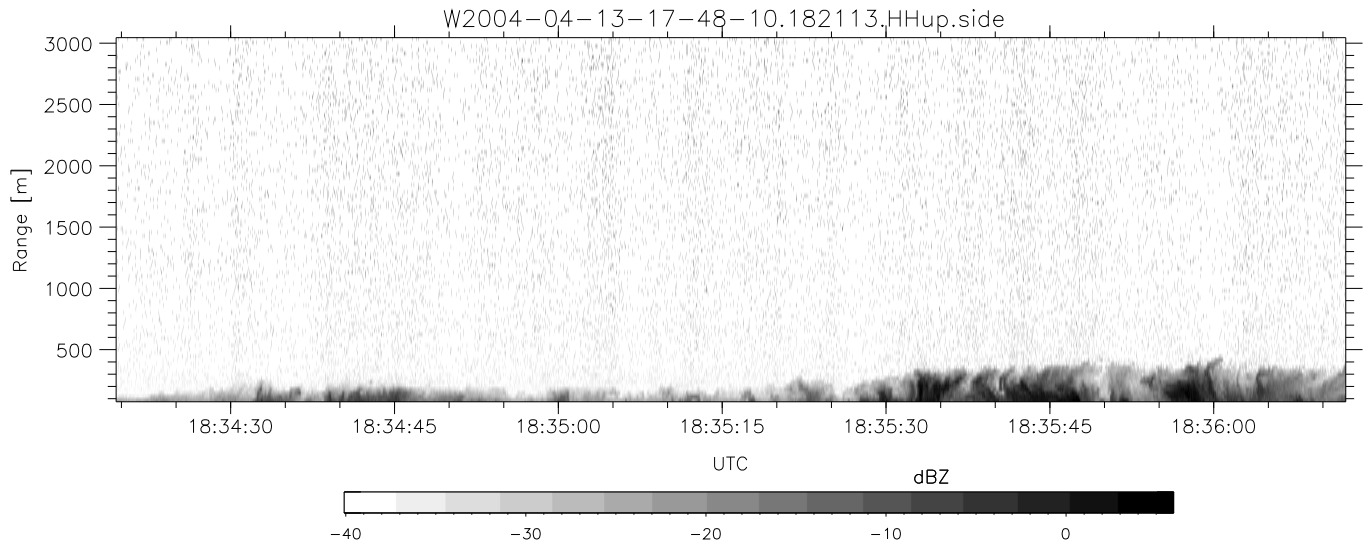
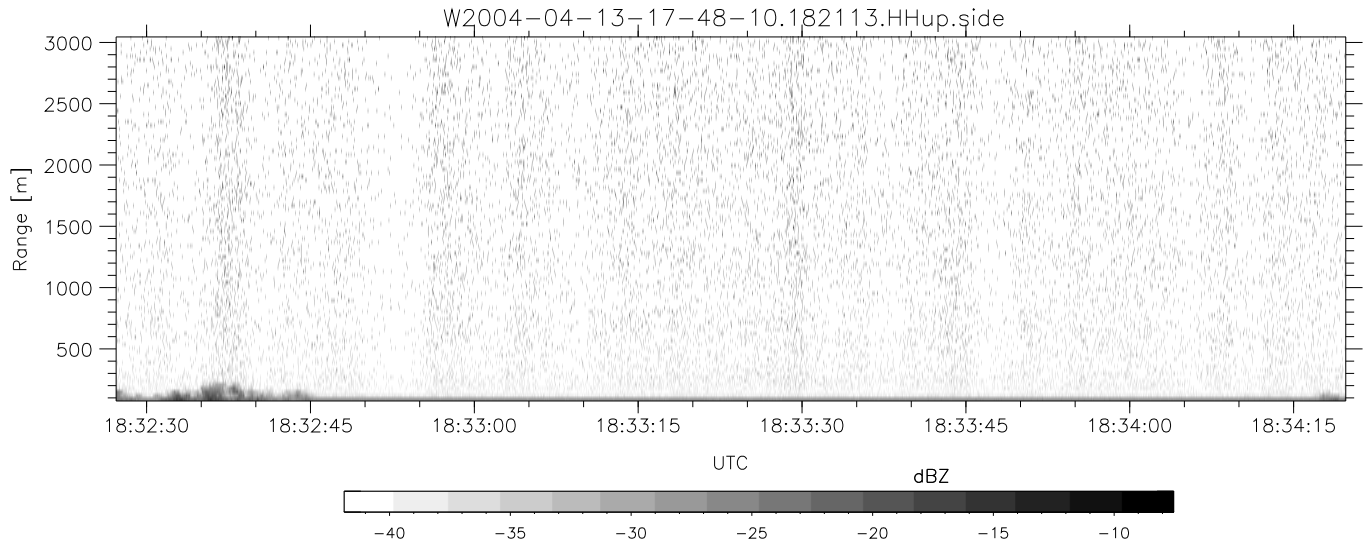
	Min	Max	Mean	Std	Varc%
hhN (dB)	-67.81	-64.19	-66.03	-76.07	9.9
vvN (dB)	-67.82	-64.26	-65.98	-75.74	10.6
hhL (dB)	-6.10	2.33	-1.01	-4.16	48.5
vvL (dB)	-1.32	6.00	4.76	0.32	36.0
ppN (m/s)	-12.35	12.34	-0.05	4.15	
ppT (m/s)	-97.58	97.47	-0.39	32.77	
hh/vv (dB)	NaN	49.35	NaN	37.39	-626
vh/hh (dB)	NaN	-28.69	-37.94	-37.02	123.
hv/vv (dB)	NaN	-33.35	-47.37	-42.60	300.
hn_jmp (dB)				0.14	
vn_jmp (dB)				0.13	



CIFEX 2004 Data (cal/250ns+2.5/100ns-3.5/500ns: 53.0,50.0)

W2004-04-13-17-48-10 - PPMAG4, IRIG:1/0/2  
 UTC: 17:48:10.07 to 20:28:38.69, Dur: 9628s  
 TimeLngth: 9628.56s, TimeInt: 28ms (35.4pps)  
 TimeCor=-13.0s, PPS(min,max,med): 35,36,35  
 Timeint/DSPdiff(mn,min,mx):28,28,38/28,28,35  
 Prof: 533 to 341754, NumProf(r/t): 35142/341221  
 ProcTime/Recs: 18:21:13-18:37:45/70284-105425  
 ADacqtime: 25ms; DRate: 198.4KB/s; Flags: 0, 0, 0  
 Pulse: 275ns, IFilt: 5.0MHz; ppPol: HH HV VV  
 TxPol: HHVV, PRF: 20 10 20 10 kHz, NoiseFlg:2,2  
 Range: Delay 75m, Spacing 30m, Gates 100  
 Ave. Pulses: 84, Rng/Prof Aspect@90m/s: 11.8

	Min	Max	Mean	Std	Varc%
hhN(dB)	-67.81	-64.19	-66.03	-76.07	9.9
vvN(dB)	-67.82	-64.26	-65.98	-75.74	10.6
hhL(dB)	-6.10	2.33	-1.01	-4.16	48.5
vvL(dB)	-1.32	6.00	4.76	0.32	36.0
ppN(m/s)	-12.35	12.34	-0.05	4.15	
ppT(m/s)	-97.58	97.47	-0.39	32.77	
hh/vv(dB)	NaN	49.35	NaN	37.39	-626
vh/hh(dB)	NaN	-28.69	-37.94	-37.02	123.
hv/vv(dB)	NaN	-33.35	-47.37	-42.60	300.
hnjmp(dB)				0.14	
vnjmp(dB)				0.13	



CIFEX 2004 Data (cal/250ns+2.5/100ns-3.5/500ns: 53.0,50.0)

W2004-04-13-17-48-10 - PPMAG4, IRIG:1/0/2  
 UTC: 17:48:10.07 to 20:28:38.69, Dur: 9628s  
 TimeLngth: 9628.56s, TimeInt: 28ms (35.4pps)  
 TimeCor=-13.0s, PPS(min,max,med): 35,36,35  
 Timeint/DSPdiff(mn,min,mx):28,28,38/28,28,35  
 Prof: 533 to 341754, NumProf(r/t): 35142/341221  
 ProcTime/Recs: 18:21:13-18:37:45/70284-105425  
 ADacqtime: 25ms; DRate: 198.4KB/s; Flags: 0, 0, 0  
 Pulse: 275ns, IFilt: 5.0MHz; ppPol: HH HV VV  
 TxPol: HHVV, PRF: 20 10 20 10 kHz, NoiseFlg:2,2  
 Range: Delay 75m, Spacing 30m, Gates 100  
 Ave. Pulses: 84, Rng/Prof Aspect@90m/s: 11.8

	Min	Max	Mean	Std	Varc%
hhN (dB)	-67.81	-64.19	-66.03	-76.07	9.9
vvN (dB)	-67.82	-64.26	-65.98	-75.74	10.6
hhL (dB)	-6.10	2.33	-1.01	-4.16	48.5
vvL (dB)	-1.32	6.00	4.76	0.32	36.0
ppN (m/s)	-12.35	12.34	-0.05	4.15	
ppT (m/s)	-97.58	97.47	-0.39	32.77	
hh/vv (dB)	NaN	49.35	NaN	37.39	-626
vh/hh (dB)	NaN	-28.69	-37.94	-37.02	123.
hv/vv (dB)	NaN	-33.35	-47.37	-42.60	300.
hn_jmp (dB)				0.14	
vn_jmp (dB)				0.13	