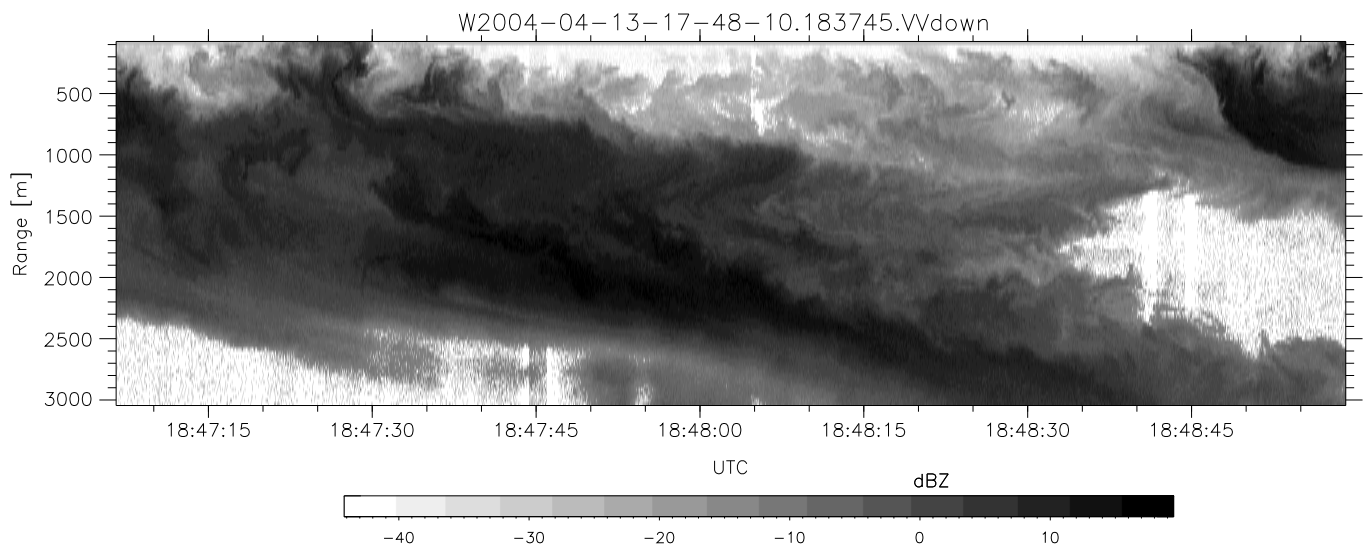
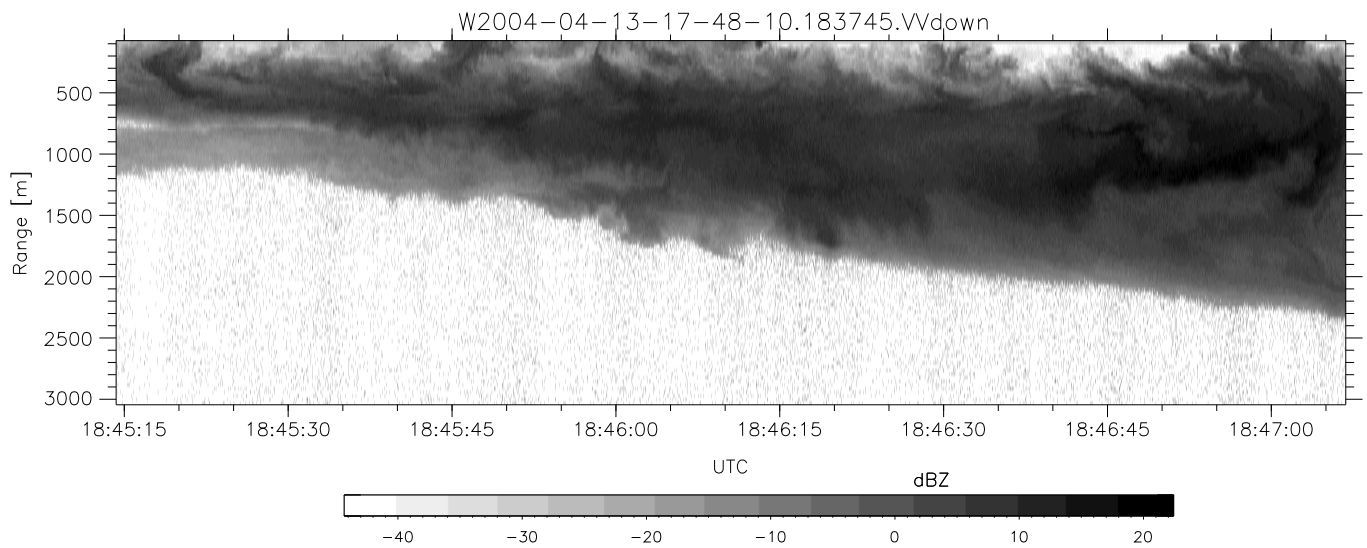
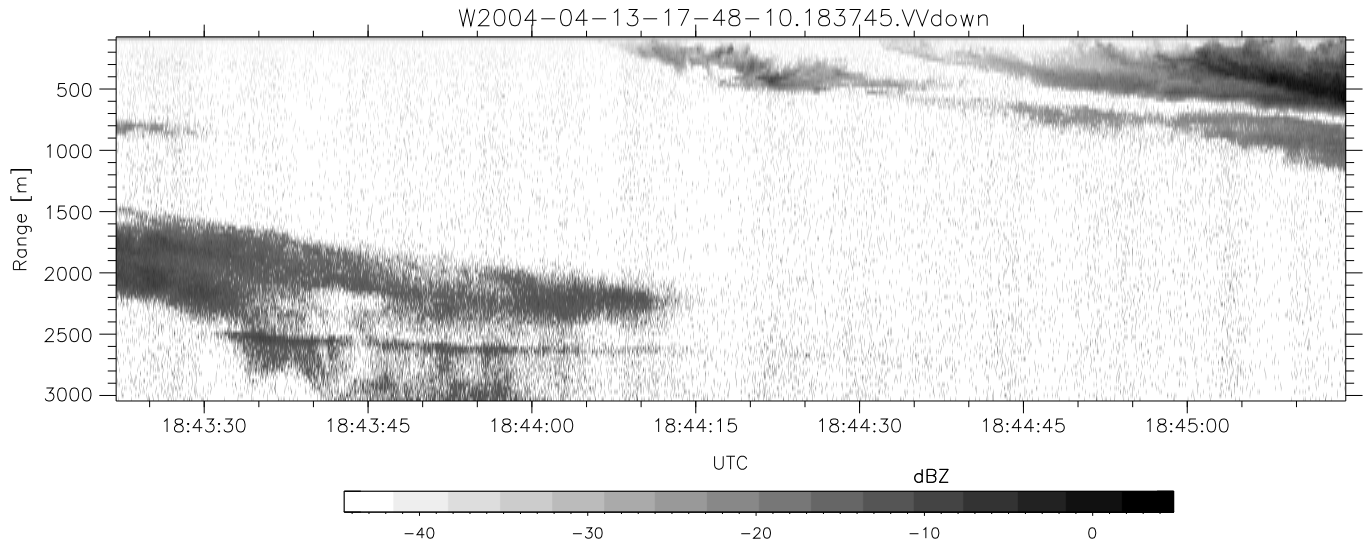


CIFEX 2004 Data (cal/250ns+2.5/100ns-3.5/500ns: 53.0,50.0)

W2004-04-13-17-48-10 - PPMAG4, IRIG:1/0/2
 UTC: 17:48:10.07 to 20:28:38.69, Dur: 9628s
 TimeLngth: 9628.56s, TimeInt: 28ms (35.4pps)
 TimeCor=-13.0s, PPS(min,max,med): 35,36,35
 Timeint/DSPdiff(mn,min,mx):28,28,37/28,28,37
 Prof: 533 to 341754, NumProf(r/t): 35142/341221
 ProcTime/Recs: 18:37:45-18:54:16/105426-140567
 ADacqtime: 25ms; DRate: 198.4KB/s; Flags: 0, 0, 0
 Pulse: 275ns, IFfilt: 5.0MHz; ppPol: HH HV VV
 TxPol: HHVV, PRF: 20 10 20 10 kHz, NoiseFlg:4,3
 Range: Delay 75m, Spacing 30m, Gates 100
 Ave. Pulses: 84, Rng/Prof Aspect@90m/s: 11.8

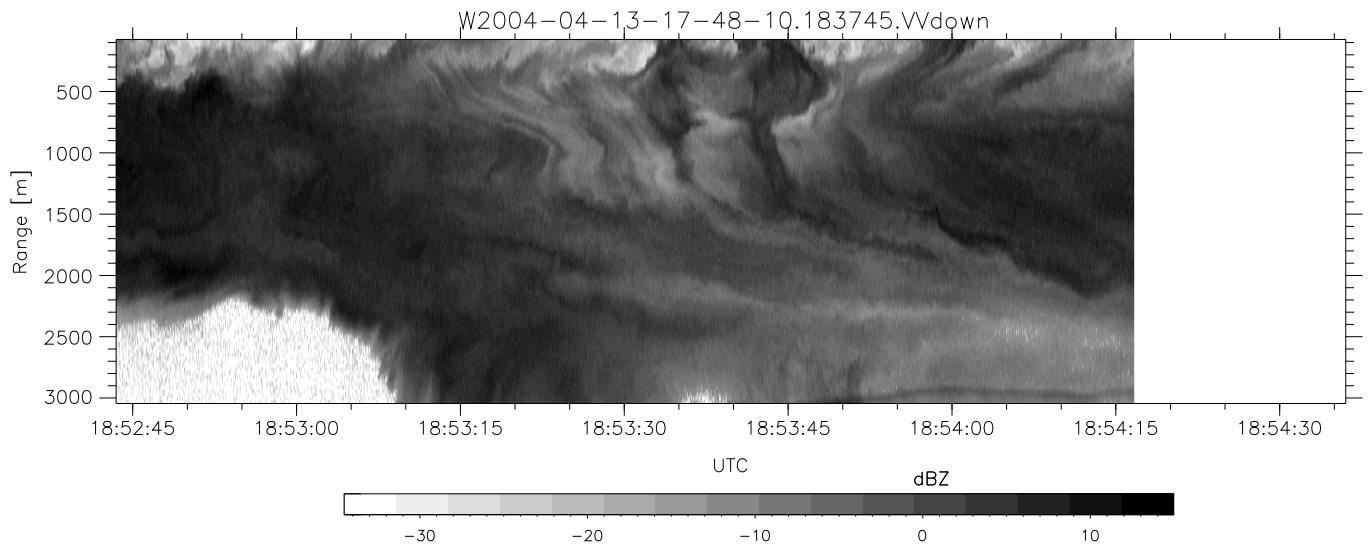
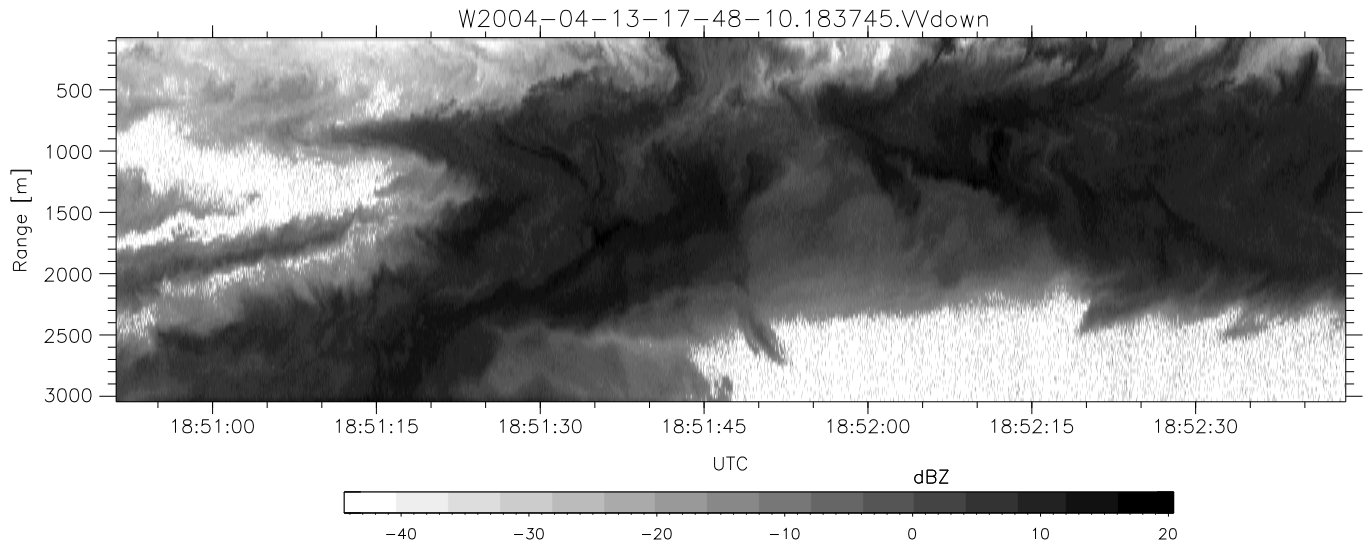
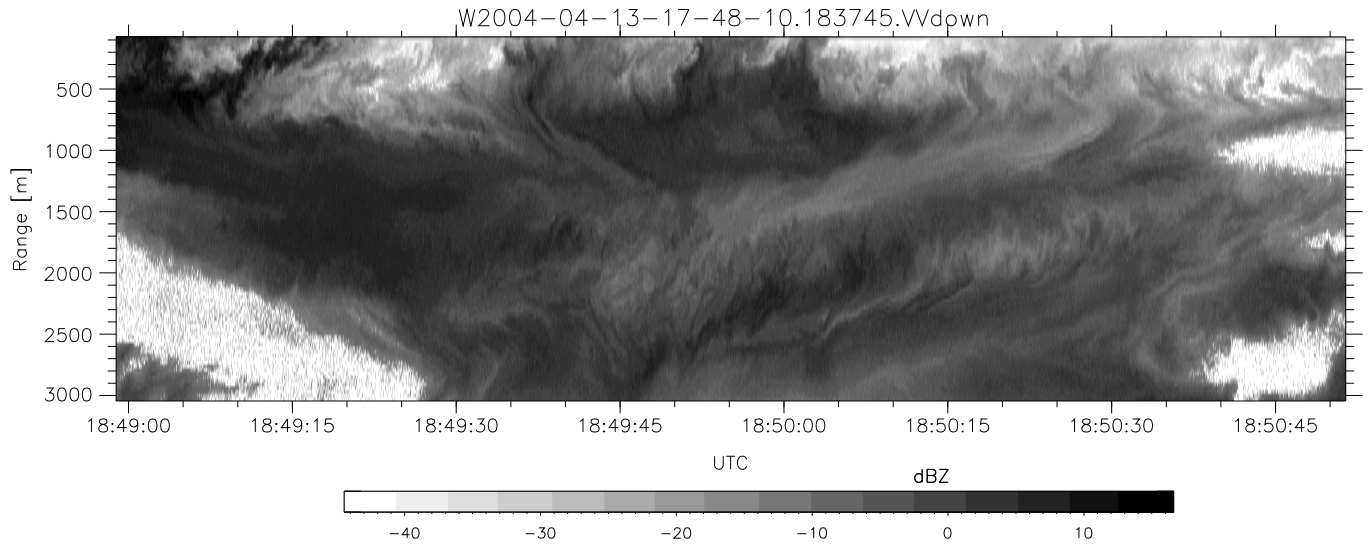
	Min	Max	Mean	Std	Varc%
hhN (dB)	-68.02	-64.46	-66.01	-76.05	9.9
vvN (dB)	-67.97	-63.77	-65.91	-75.73	10.4
hhL (dB)	-7.17	1.53	-2.91	-5.38	56.7
vvL (dB)	-6.85	6.00	4.31	-0.06	36.5
ppN (m/s)	-12.35	12.71	-0.03	4.16	
ppT (m/s)	-97.58	100.39	-0.27	32.86	
hh/vv (dB)	-36.35	22.28	2.08	6.48	275.
vh/hh (dB)	NaN	-28.27	-39.83	-38.18	146.
hv/vv (dB)	NaN	-32.11	-46.18	-42.25	247.
hn_jmp (dB)			0.14		
vn_jmp (dB)			0.13		



CIFEX 2004 Data (cal/250ns+2.5/100ns-3.5/500ns: 53.0,50.0)

W2004-04-13-17-48-10 - PPMAG4, IRIG:1/0/2
 UTC: 17:48:10.07 to 20:28:38.69, Dur: 9628s
 TimeLngth: 9628.56s, TimeInt: 28ms (35.4pps)
 TimeCor=-13.0s, PPS(min,max,med): 35,36,35
 Timeint/DSPdiff(mn,min,mx):28,28,37/28,28,37
 Prof: 533 to 341754, NumProf(r/t): 35142/341221
 ProcTime/Recs: 18:37:45-18:54:16/105426-140567
 ADacqtime: 25ms; DRate: 198.4KB/s; Flags: 0, 0, 0
 Pulse: 275ns, IFilt: 5.0MHz; ppPol: HH HV VV
 TxPol: HHVV, PRF: 20 10 20 10 kHz, NoiseFlg:4,3
 Range: Delay 75m, Spacing 30m, Gates 100
 Ave. Pulses: 84, Rng/Prof Aspect@90m/s: 11.8

	Min	Max	Mean	Std	Varc%
hhN(dB)	-68.02	-64.46	-66.01	-76.05	9.9
vvN(dB)	-67.97	-63.77	-65.91	-75.73	10.4
hhL(dB)	-7.17	1.53	-2.91	-5.38	56.7
vvL(dB)	-6.85	6.00	4.31	-0.06	36.5
ppN(m/s)	-12.35	12.71	-0.03	4.16	
ppT(m/s)	-97.58	100.39	-0.27	32.86	
hh/vv(dB)	-36.35	22.28	2.08	6.48	275.
vh/hh(dB)	NaN	-28.27	-39.83	-38.18	146.
hv/vv(dB)	NaN	-32.11	-46.18	-42.25	247.
hn_jmp(dB)			0.14		
vn_jmp(dB)			0.13		



CIFEX 2004 Data (cal/250ns+2.5/100ns-3.5/500ns: 53.0,50.0)

W2004-04-13-17-48-10 - PPMAG4, IRIG:1/0/2
 UTC: 17:48:10.07 to 20:28:38.69, Dur: 9628s
 TimeLngth: 9628.56s, TimeInt: 28ms (35.4pps)
 TimeCor=-13.0s, PPS(min,max,med): 35,36,35
 Timeint/DSPdiff(mn,min,mx):28,28,37/28,28,37
 Prof: 533 to 341754, NumProf(r/t): 35142/341221
 ProcTime/Recs: 18:37:45-18:54:16/105426-140567
 ADacqtime: 25ms; DRate: 198.4KB/s; Flags: 0, 0, 0
 Pulse: 275ns, IFilt: 5.0MHz; ppPol: HH HV VV
 TxPol: HHVV, PRF: 20 10 20 10 kHz, Noiseflg:4,3
 Range: Delay 75m, Spacing 30m, Gates 100
 Ave. Pulses: 84, Rng/Prof Aspect@90m/s: 11.8

	Min	Max	Mean	Std	Varc%
hhN(dB)	-68.02	-64.46	-66.01	-76.05	9.9
vvN(dB)	-67.97	-63.77	-65.91	-75.73	10.4
hhL(dB)	-7.17	1.53	-2.91	-5.38	56.7
vvL(dB)	-6.85	6.00	4.31	-0.06	36.5
ppN(m/s)	-12.35	12.71	-0.03	4.16	
ppT(m/s)	-97.58	100.39	-0.27	32.86	
hh/vv(dB)	-36.35	22.28	2.08	6.48	275.
vh/hh(dB)	NaN	-28.27	-39.83	-38.18	146.
hv/vv(dB)	NaN	-32.11	-46.18	-42.25	247.
hnjmp(dB)			0.14		
vnjmp(dB)			0.13		