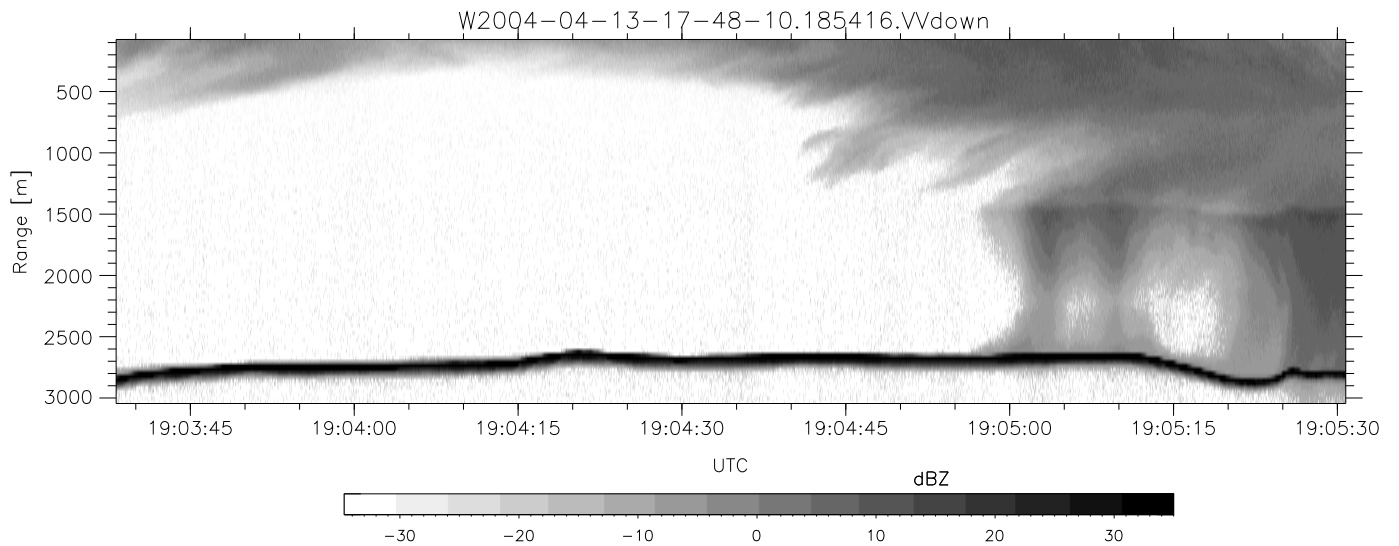
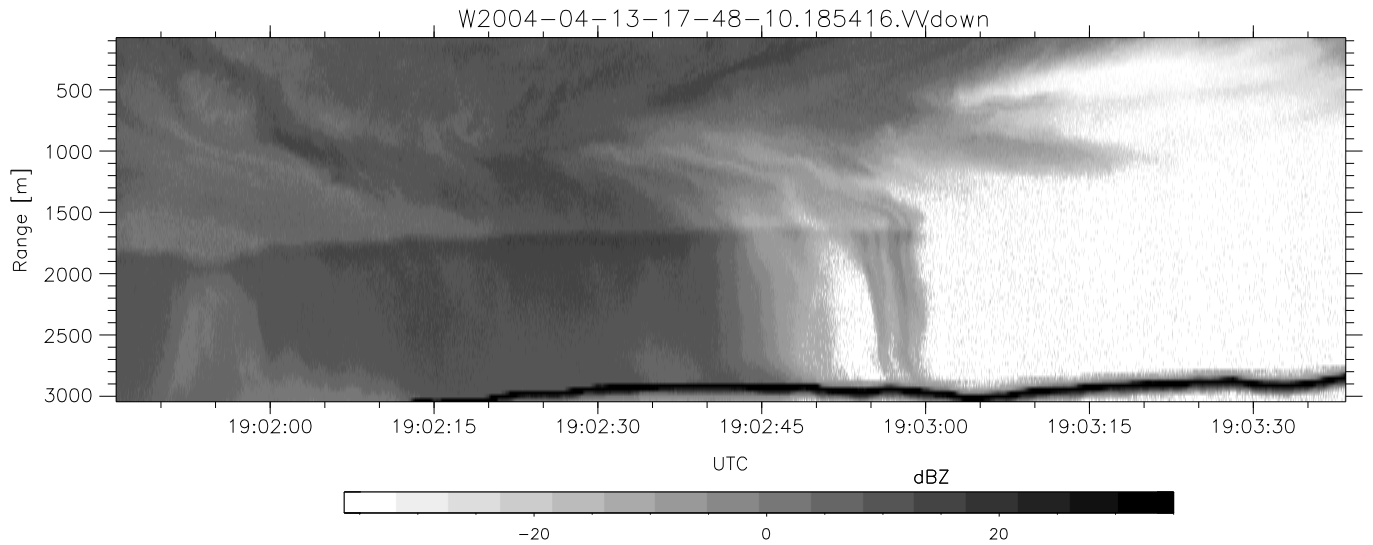
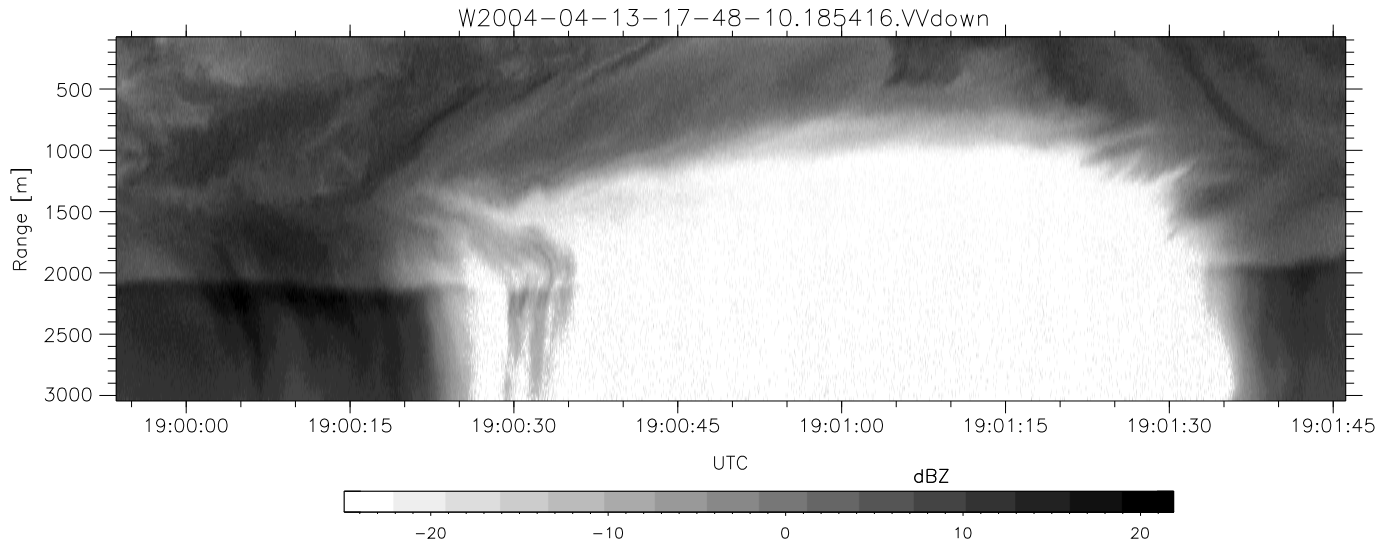


CIFEX 2004 Data (cal/250ns+2.5/100ns-3.5/500ns: 53.0,50.0)

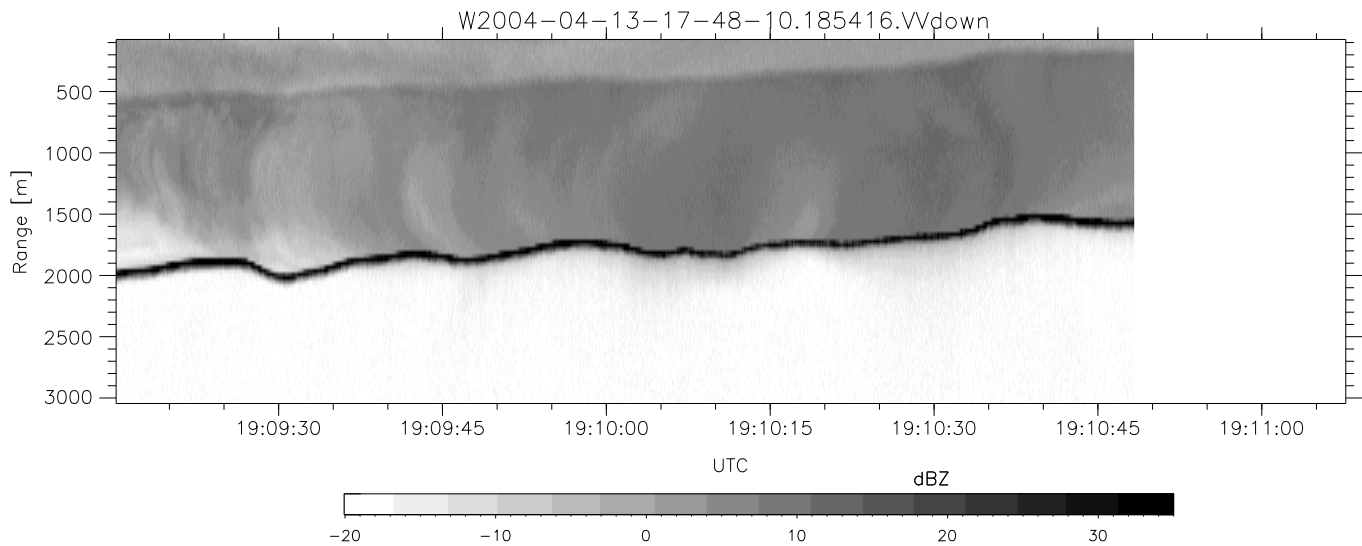
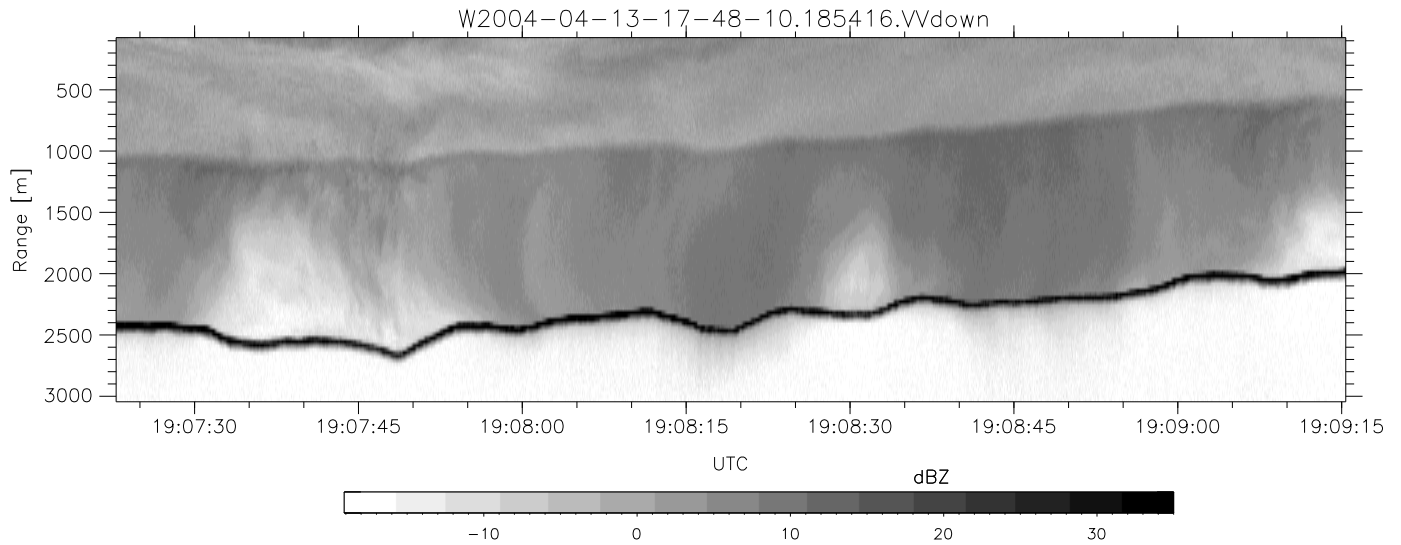
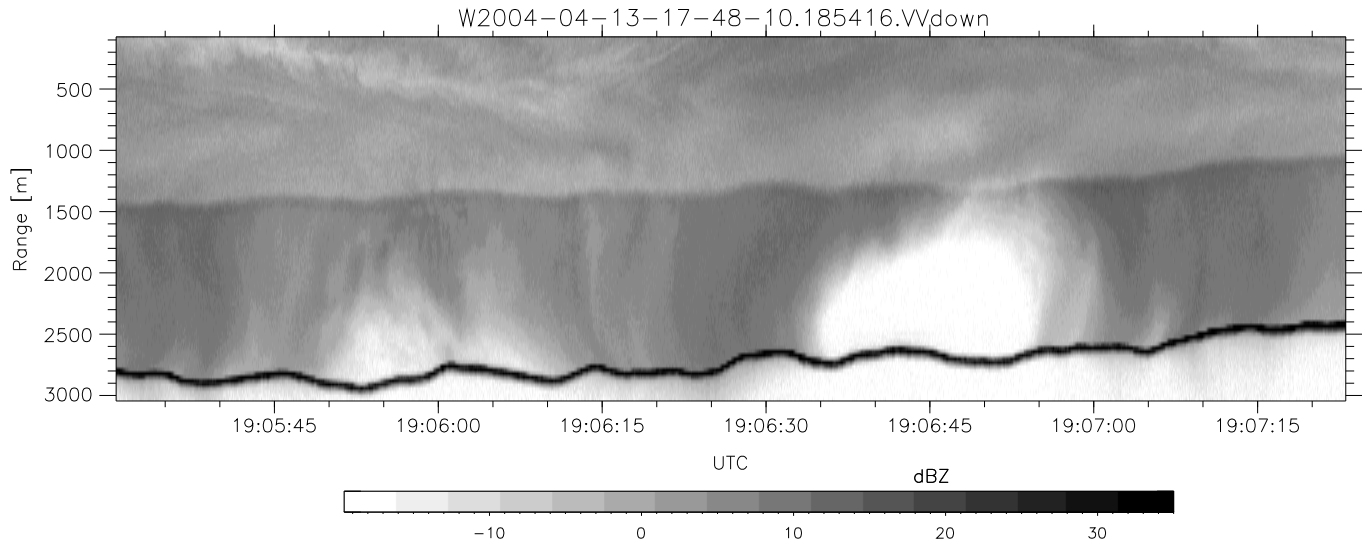
W2004-04-13-17-48-10 - PPMAG4, IRIG:1/0/2	hhN(dB)	Min	Max	Mean	Std	Varc%
UTC: 17:48:10.07 to 20:28:38.69, Dur: 9628s	vvN(dB)	-68.03	-64.20	-65.91	-75.95	9.9
TimeLngth: 9628.56s, TimeInt: 28ms (35.4pps)	hhL(dB)	-67.93	-64.20	-65.87	-75.80	10.2
TimeCor=-13.0s, PPS(min,max,med): 35,36,35	vvL(dB)	-16.50	1.45	-1.01	-5.12	38.9
Timeint/DSPdiff(mn,min,mx):28,28,36/28,28,29	ppN(m/s)	-17.00	6.00	1.19	-0.13	73.8
Prof: 533 to 341754, NumProf(r/t): 35142/341221	ppT(m/s)	-12.67	12.56	0.00	4.14	
ProcTime/Recs: 18:54:16-19:10:48/140568-175709	hh/vv(dB)	-100.0	99.25	0.02	32.69	
ADAcqtime: 25ms; DRate: 198.4KB/s; Flags: 0, 0, 0	vh/vv(dB)	NaN	72.57	NaN	48.74	-583
Pulse: 275ns, IFilt: 5.0MHz; ppPol: HH HV VV	vh/hh(dB)	NaN	-26.90	-40.56	-37.33	210.
TxPol: HHV, PRF: 20 10 20 10 kHz, NoiseFlg:4,3	hv/vv(dB)	NaN	-33.16	-46.95	-42.71	265.
Range: Delay 75m, Spacing 30m, Gates 100	hn_jmp(dB)				0.13	
Ave. Pulses: 84, Rng/Prof Aspect@90m/s: 11.8	vn_jmp(dB)				0.13	



CIFEX 2004 Data (cal/250ns+2.5/100ns-3.5/500ns: 53.0,50.0)

W2004-04-13-17-48-10 - PPMAG4, IRIG:1/0/2  
 UTC: 17:48:10.07 to 20:28:38.69, Dur: 9628s  
 TimeLngth: 9628.56s, TimeInt: 28ms (35.4pps)  
 TimeCor=-13.0s, PPS(min,max,med): 35,36,35  
 Timeint/DSPdiff(mn,min,mx):28,28,36/28,28,29  
 Prof: 533 to 341754, NumProf(r/t): 35142/341221  
 ProcTime/Recs: 18:54:16-19:10:48/140568-175709  
 ADacqtime: 25ms; DRate: 198.4KB/s; Flags: 0, 0, 0  
 Pulse: 275ns, IFilt: 5.0MHz; ppPol: HH HV VV  
 TxPol: HHVV, PRF: 20 10 20 10 kHz, NoiseFlg:4,3  
 Range: Delay 75m, Spacing 30m, Gates 100  
 Ave. Pulses: 84, Rng/Prof Aspect@90m/s: 11.8

	Min	Max	Mean	Std	Varc%
hhN (dB)	-68.03	-64.20	-65.91	-75.95	9.9
vvN (dB)	-67.93	-64.20	-65.87	-75.80	10.2
hhL (dB)	-16.50	1.45	-1.01	-5.12	38.9
vvL (dB)	-17.00	6.00	1.19	-0.13	73.8
ppN (m/s)	-12.67	12.56	0.00	4.14	
ppT (m/s)	-100.0	99.25	0.02	32.69	
hh/vv (dB)	NaN	72.57	NaN	48.74	-583
vh/hh (dB)	NaN	-26.90	-40.56	-37.33	210.
hv/vv (dB)	NaN	-33.16	-46.95	-42.71	265.
hnjmp (dB)				0.13	
vnjmp (dB)				0.13	



CIFEX 2004 Data (cal/250ns+2.5/100ns-3.5/500ns: 53.0,50.0)

W2004-04-13-17-48-10 - PPMAG4, IRIG:1/0/2  
 UTC: 17:48:10.07 to 20:28:38.69, Dur: 9628s  
 TimeLngth: 9628.56s, TimeInt: 28ms (35.4pps)  
 TimeCor=-13.0s, PPS(min,max,med): 35,36,35  
 Timeint/DSPdiff(mn,min,mx):28,28,36/28,28,29  
 Prof: 533 to 341754, NumProf(r/t): 35142/341221  
 ProcTime/Recs: 18:54:16-19:10:48/140568-175709  
 ADacqtime: 25ms; DRate: 198.4KB/s; Flags: 0, 0, 0  
 Pulse: 275ns, IFfilt: 5.0MHz; ppPol: HH HV VV  
 TxPol: HHVV, PRF: 20 10 20 10 kHz, NoiseFlg:4,3  
 Range: Delay 75m, Spacing 30m, Gates 100  
 Ave. Pulses: 84, Rng/Prof Aspect@90m/s: 11.8

	Min	Max	Mean	Std	Varc%
hhN(dB)	-68.03	-64.20	-65.91	-75.95	9.9
vvN(dB)	-67.93	-64.20	-65.87	-75.80	10.2
hhL(dB)	-16.50	1.45	-1.01	-5.12	38.9
vvL(dB)	-17.00	6.00	1.19	-0.13	73.8
ppN(m/s)	-12.67	12.56	0.00	4.14	
ppT(m/s)	-100.0	99.25	0.02	32.69	
hh/vv(dB)	NaN	72.57	NaN	48.74	-583
vh/hh(dB)	NaN	-26.90	-40.56	-37.33	210.
hv/vv(dB)	NaN	-33.16	-46.95	-42.71	265.
hnjmp(dB)				0.13	
vnjmp(dB)				0.13	