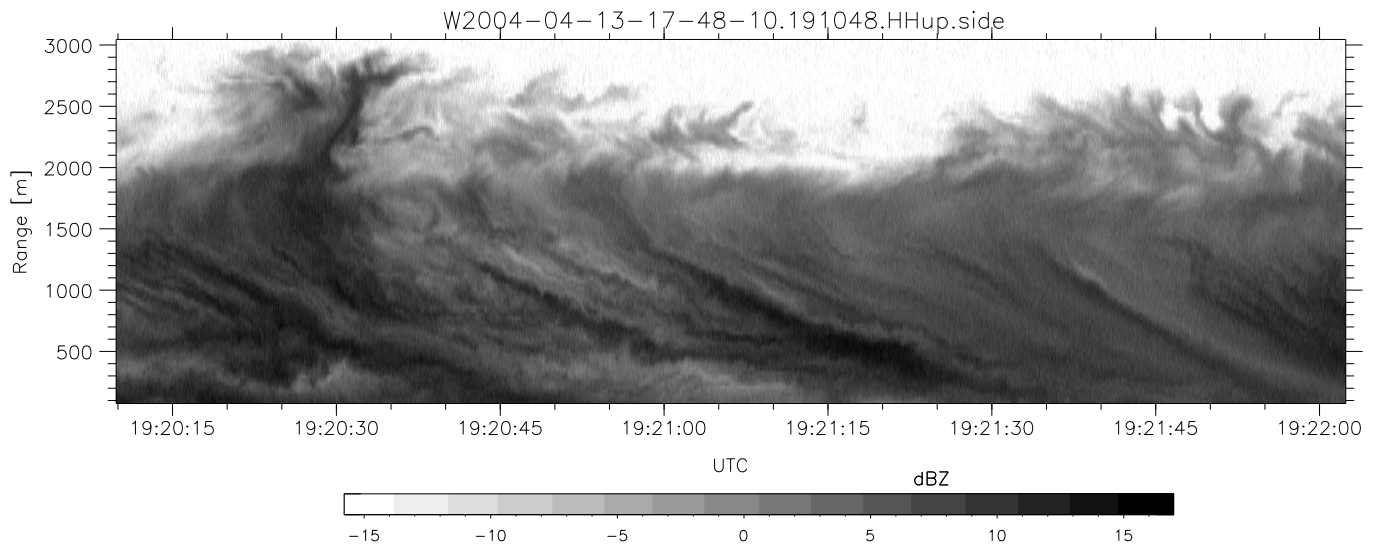
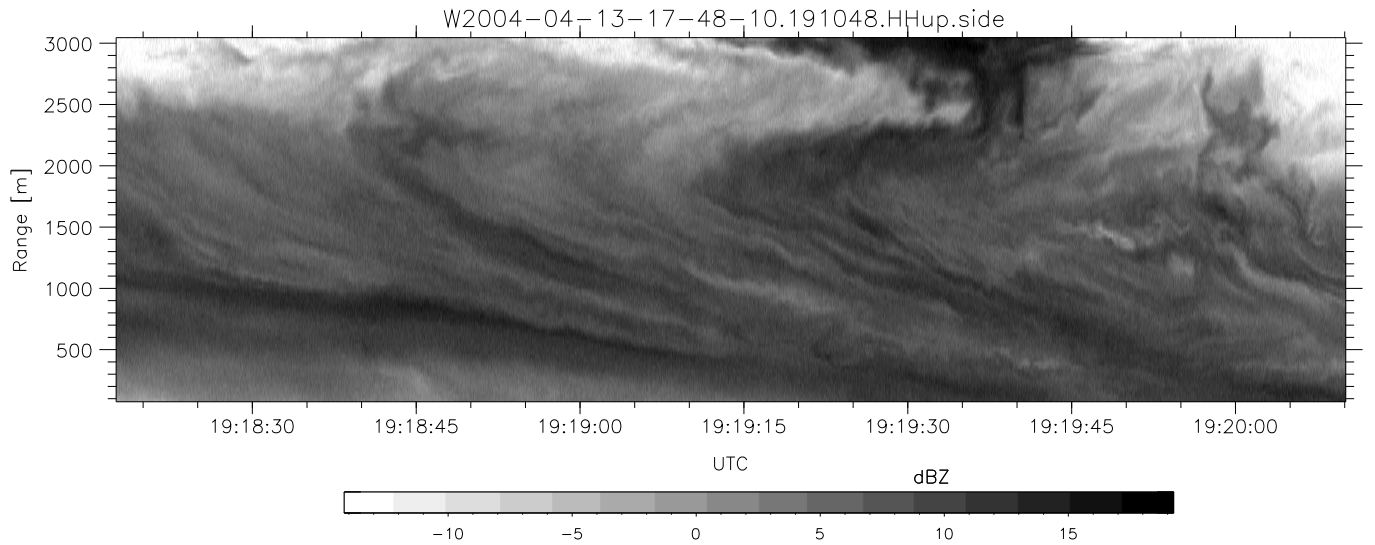
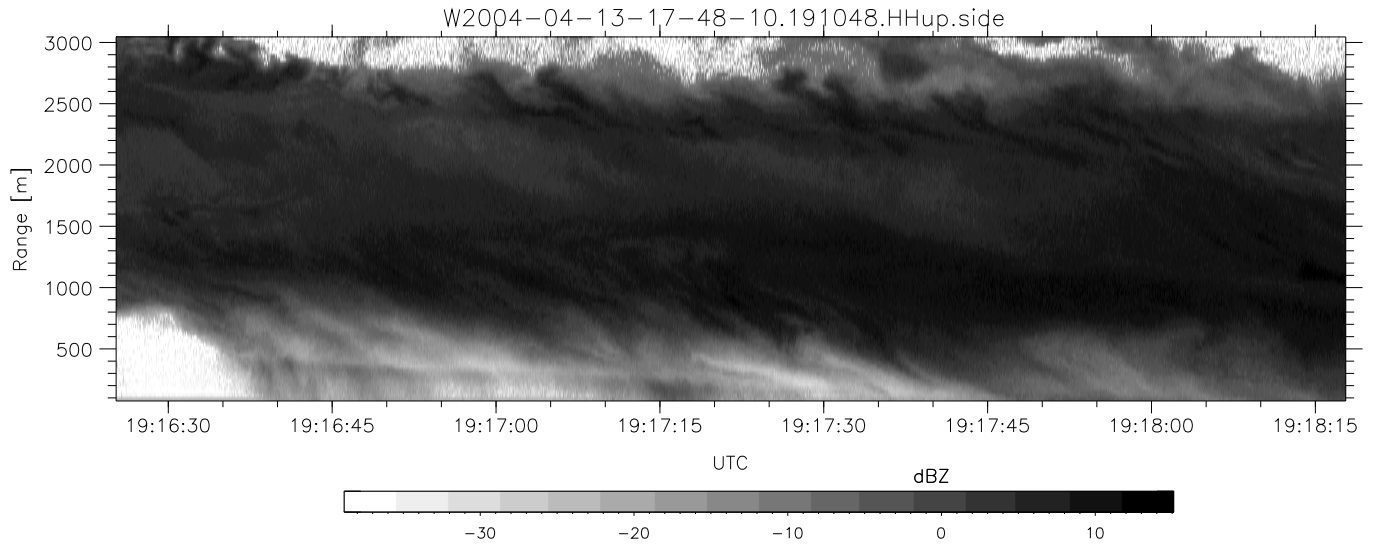


CIFEX 2004 Data (cal/250ns+2.5/100ns-3.5/500ns: 53.0,50.0)

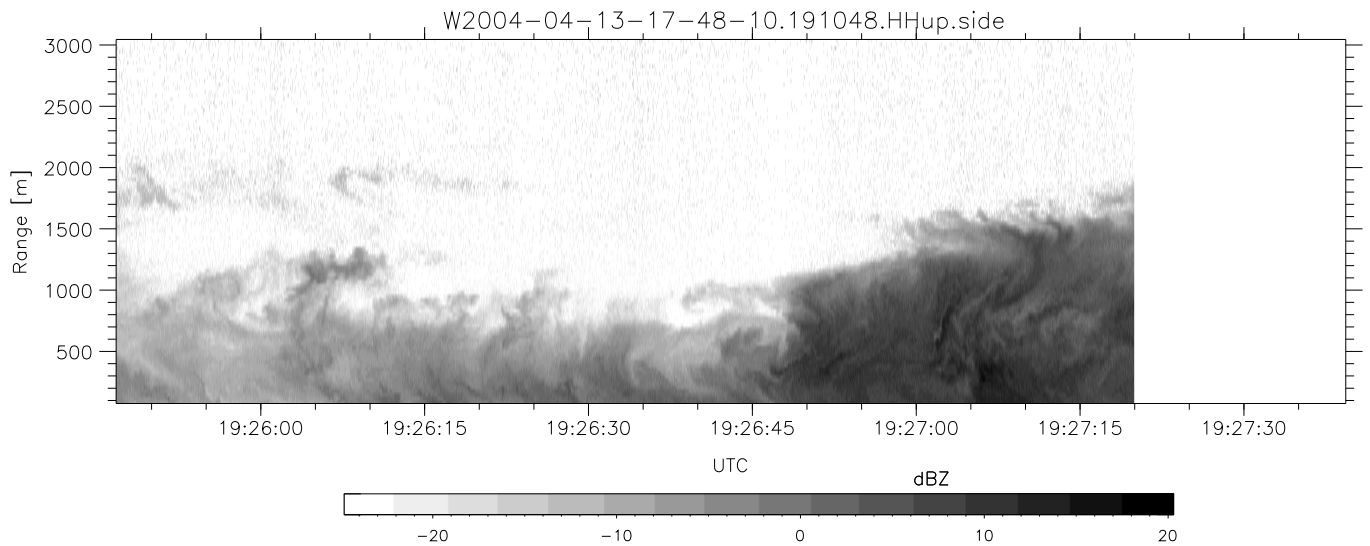
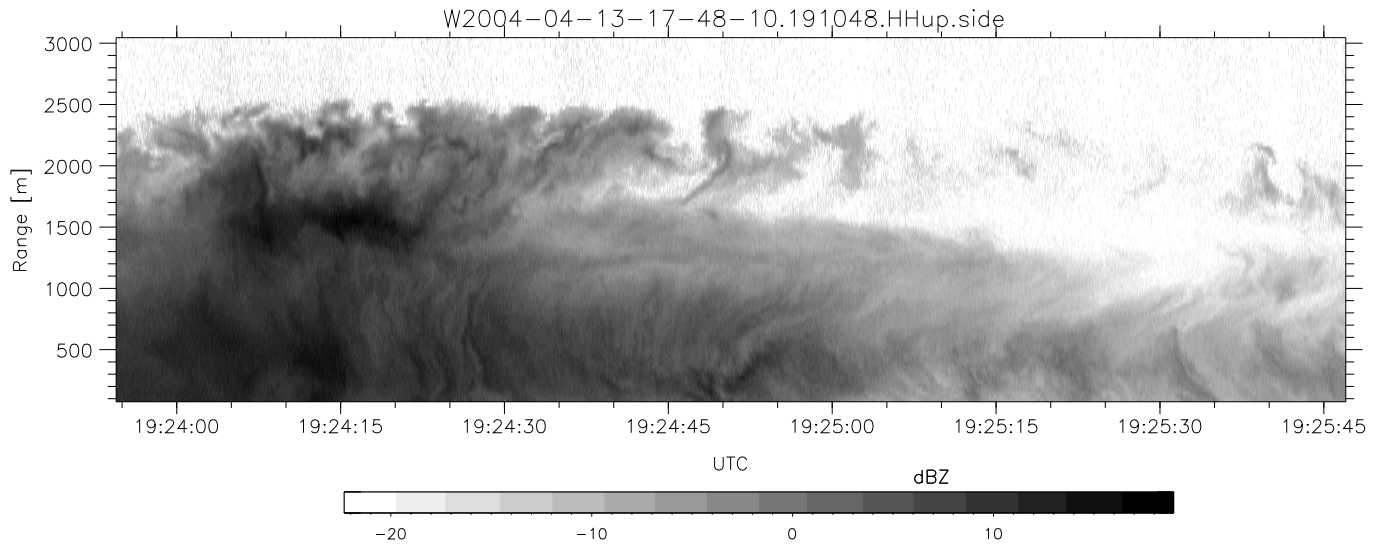
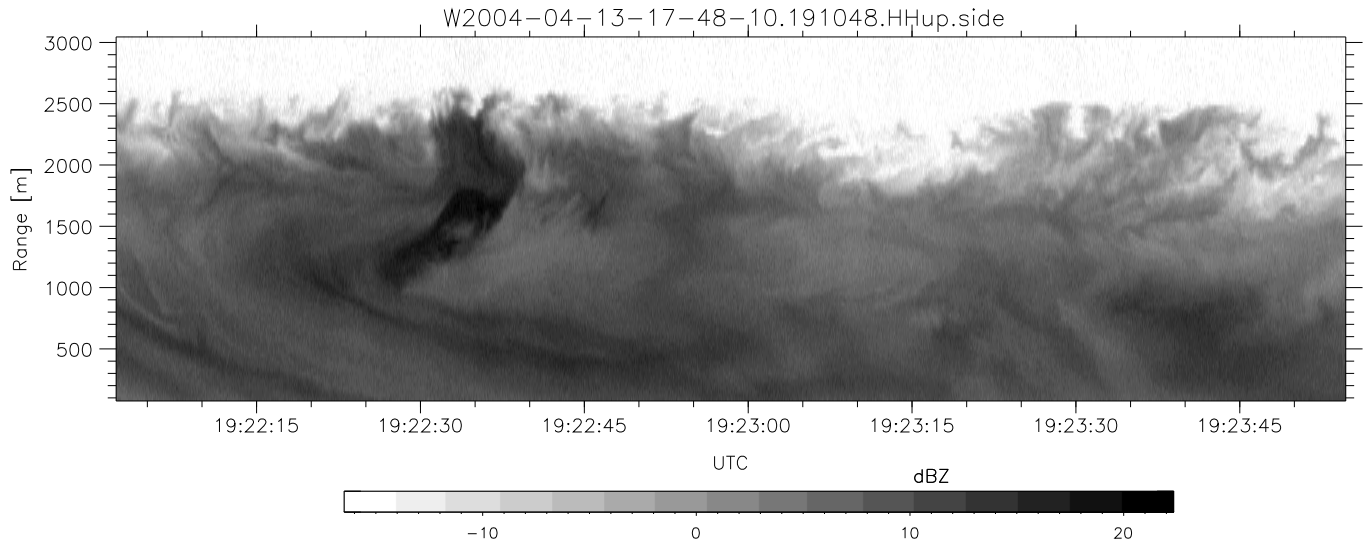
W2004-04-13-17-48-10 - PPMAG4, IRIG:1/0/2	Min	Max	Mean	Std	Varc%	
UTC: 17:48:10.07 to 20:28:38.69, Dur: 9628s	hhN (dB)	-67.60	-64.24	-65.81	-75.83	9.9
TimeLngth: 9628.56s, TimeInt: 28ms (35.4pps)	vvN (dB)	-67.89	-64.03	-65.90	-75.83	10.2
TimeCor=-13.0s, PPS(min,max,med): 35,36,35	hhL (dB)	-23.41	3.13	-0.70	-1.97	74.7
Timeint/DSPdiff(mn,min,mx):28,28,32/28,28,32	vvL (dB)	-16.50	6.00	3.80	2.36	71.8
Prof: 533 to 341754, NumProf(r/t): 35142/341221	ppN(m/s)	-12.67	12.69	0.01	4.16	
ProcTime/Recs: 19:10:48-19:27:19/175710-210851	ppT(m/s)	-100.0	100.22	0.05	32.86	
ADAcqtime: 25ms; DRate: 198.4KB/s; Flags: 0, 0, 0	hh/vv (dB)	NaN	Inf	Inf	-NaN	-NaN
Pulse: 275ns, IFilt: 5.0MHz; ppPol: HH HV VV	vh/hh (dB)	NaN	-6.09	-39.45	-29.45	1001
TxPol: HHVV, PRF: 20 10 20 10 kHz, Noiseflg:4,3	hv/vv (dB)	NaN	-33.59	-47.98	-43.26	296.
Range: Delay 75m, Spacing 30m, Gates 100	hn_jmp (dB)			0.14		
Ave. Pulses: 84, Rng/Prof Aspect@90m/s: 11.8	vn_jmp (dB)			0.12		



CIFEX 2004 Data (cal/250ns+2.5/100ns-3.5/500ns: 53.0,50.0)

W2004-04-13-17-48-10 - PPMAG4, IRIG:1/0/2  
 UTC: 17:48:10.07 to 20:28:38.69, Dur: 9628s  
 TimeLngth: 9628.56s, TimeInt: 28ms (35.4pps)  
 TimeCor=-13.0s, PPS(min,max,med): 35,36,35  
 Timeint/DSPdiff(mn,min,mx):28,28,32/28,28,32  
 Prof: 533 to 341754, NumProf(r/t): 35142/341221  
 ProcTime/Recs: 19:10:48-19:27:19/175710-210851  
 ADacqtime: 25ms; DRate: 198.4KB/s; Flags: 0, 0, 0  
 Pulse: 275ns, IFilt: 5.0MHz; ppPol: HH HV VV  
 TxPol: HHVV, PRF: 20 10 20 10 kHz, Noiseflg:4,3  
 Range: Delay 75m, Spacing 30m, Gates 100  
 Ave. Pulses: 84, Rng/Prof Aspect@90m/s: 11.8

	Min	Max	Mean	Std	Varc%
hhN(dB)	-67.60	-64.24	-65.81	-75.83	9.9
vvN(dB)	-67.89	-64.03	-65.90	-75.83	10.2
hhL(dB)	-23.41	3.13	-0.70	-1.97	74.7
vvL(dB)	-16.50	6.00	3.80	2.36	71.8
ppN(m/s)	-12.67	12.69	0.01	4.16	
ppT(m/s)	-100.0	100.22	0.05	32.86	
hh/vv(dB)	NaN	Inf	Inf	-NaN	-NaN
vh/hh(dB)	NaN	-6.09	-39.45	-29.45	1001
hv/vv(dB)	NaN	-33.59	-47.98	-43.26	296.
hnjmp(dB)			0.14		
vnjmp(dB)			0.12		



CIFEX 2004 Data (cal/250ns+2.5/100ns-3.5/500ns: 53.0,50.0)

W2004-04-13-17-48-10 - PPMAG4, IRIG:1/0/2  
 UTC: 17:48:10.07 to 20:28:38.69, Dur: 9628s  
 TimeLngth: 9628.56s, TimeInt: 28ms (35.4pps)  
 TimeCor=-13.0s, PPS(min,max,med): 35,36,35  
 Timeint/DSPdiff(mn,min,mx):28,28,32/28,28,32  
 Prof: 533 to 341754, NumProf(r/t): 35142/341221  
 ProcTime/Recs: 19:10:48-19:27:19/175710-210851  
 ADacqtime: 25ms; DRate: 198.4KB/s; Flags: 0, 0, 0  
 Pulse: 275ns, IFilt: 5.0MHz; ppPol: HH HV VV  
 TxPol: HHVV, PRF: 20 10 20 10 kHz, NoiseFlg:4,3  
 Range: Delay 75m, Spacing 30m, Gates 100  
 Ave. Pulses: 84, Rng/Prof Aspect@90m/s: 11.8

	Min	Max	Mean	Std	Varc%
hhN(dB)	-67.60	-64.24	-65.81	-75.83	9.9
vvN(dB)	-67.89	-64.03	-65.90	-75.83	10.2
hhL(dB)	-23.41	3.13	-0.70	-1.97	74.7
vvL(dB)	-16.50	6.00	3.80	2.36	71.8
ppN(m/s)	-12.67	12.69	0.01	4.16	
ppT(m/s)	-100.0	100.22	0.05	32.86	
hh/vv(dB)	NaN	Inf	Inf	-NaN	-NaN
vh/hh(dB)	NaN	-6.09	-39.45	-29.45	1001
hv/vv(dB)	NaN	-33.59	-47.98	-43.26	296.
hnjmp(dB)			0.14		
vnjmp(dB)			0.12		