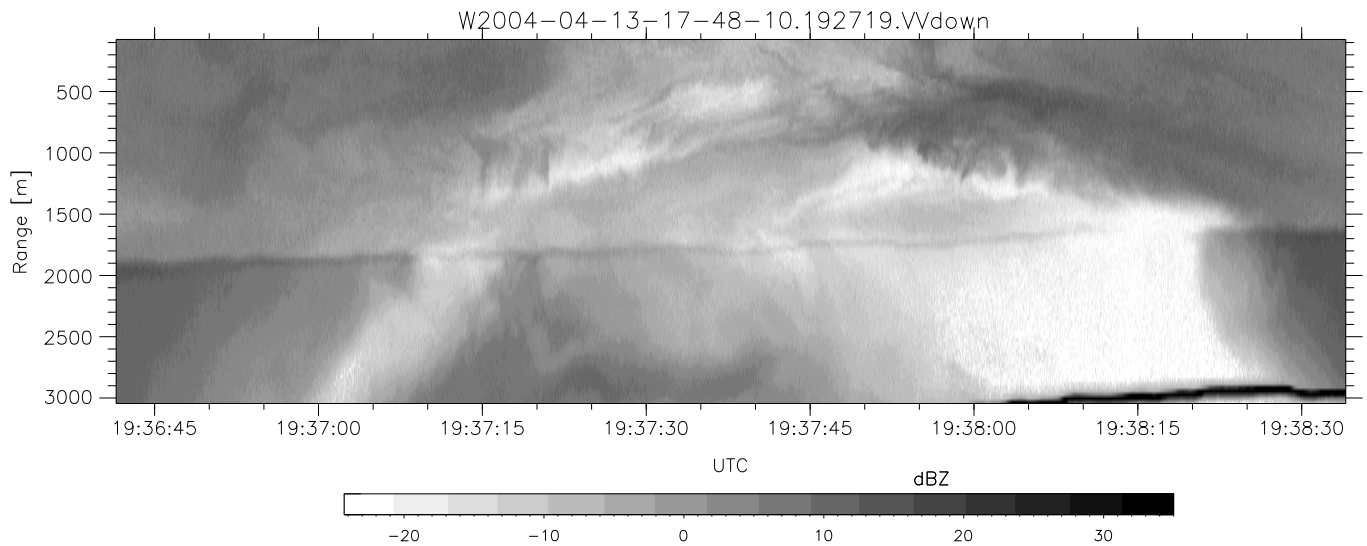
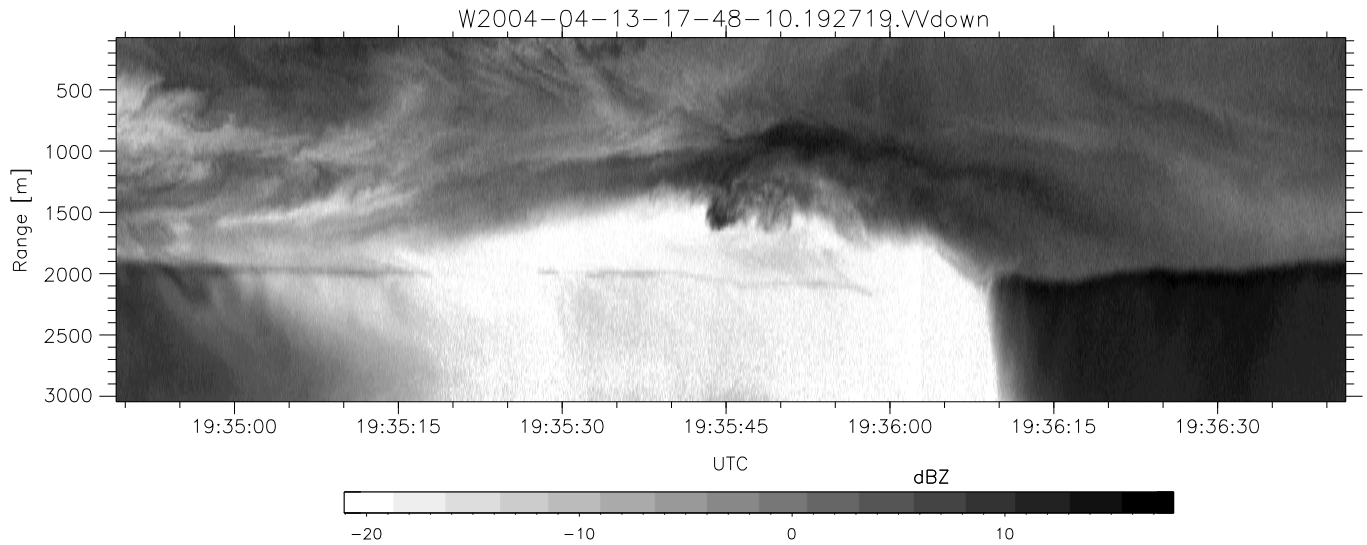
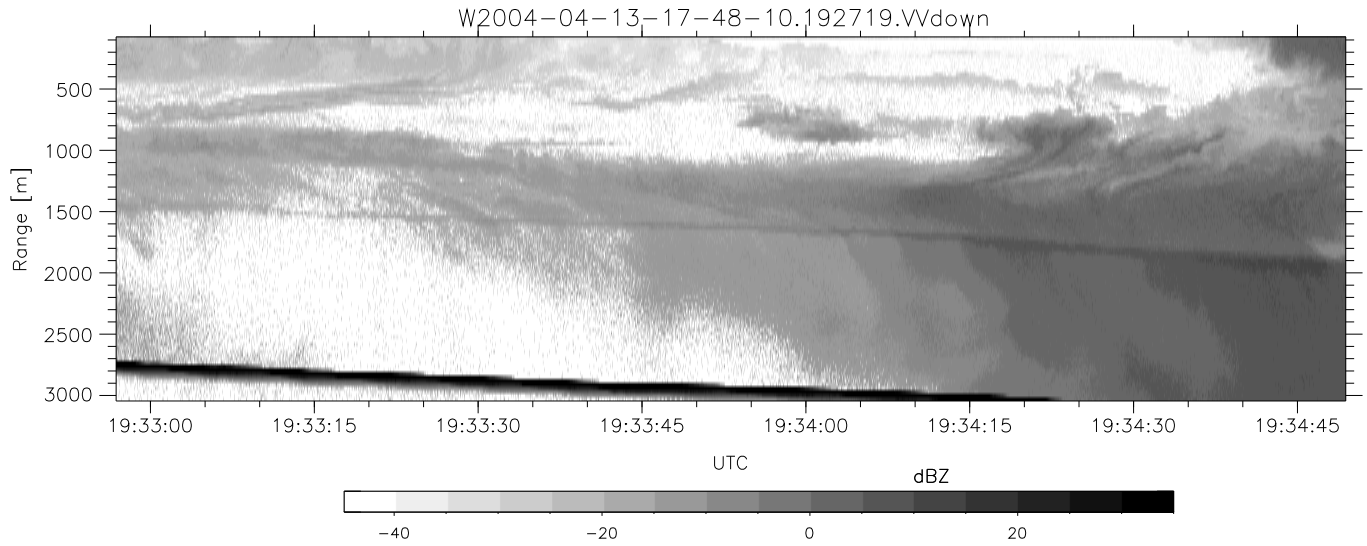


CIFEX 2004 Data (cal/250ns+2.5/100ns-3.5/500ns: 53.0,50.0)

W2004-04-13-17-48-10 - PPMAG4, IRIG:1/0/2  
 UTC: 17:48:10.07 to 20:28:38.69, Dur: 9628s  
 TimeLngth: 9628.56s, TimeInt: 28ms (35.4pps)  
 TimeCor=-13.0s, PPS(min,max,med): 35,36,35  
 Timeint/DSPdiff(mn,min,mx):28,28,28/28,28,28  
 Prof: 533 to 341754, NumProf(r/t): 35142/341221  
 ProcTime/Recs: 19:27:19-19:43:51/210852-245993  
 ADacqtime: 25ms; DRate: 198.4KB/s; Flags: 0, 0, 0  
 Pulse: 275ns, IFilt: 5.0MHz; ppPol: HH HV VV  
 TxPol: HHV, PRF: 20 10 20 10 kHz, NoiseFlg:4,3  
 Range: Delay 75m, Spacing 30m, Gates 100  
 Ave. Pulses: 84, Rng/Prof Aspect@90m/s: 11.8

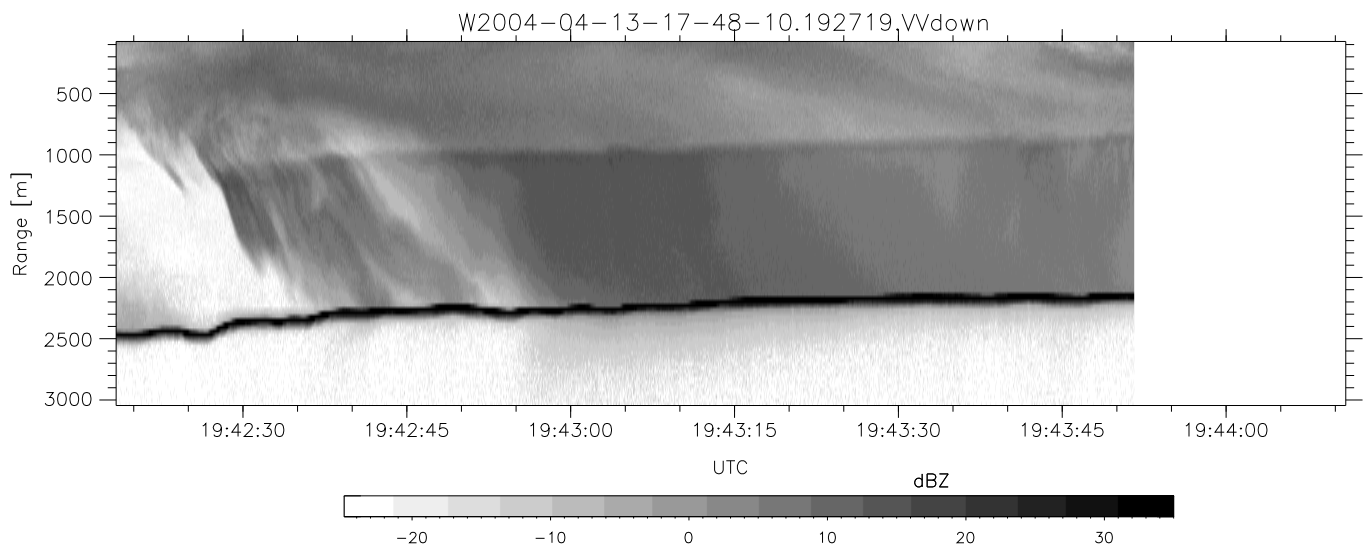
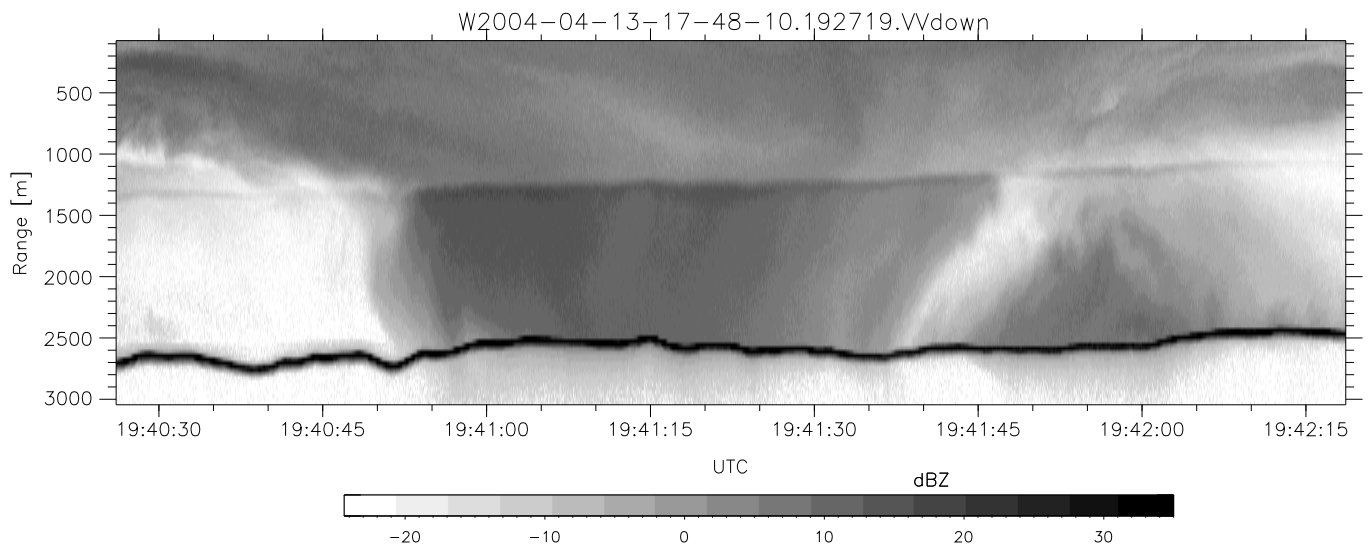
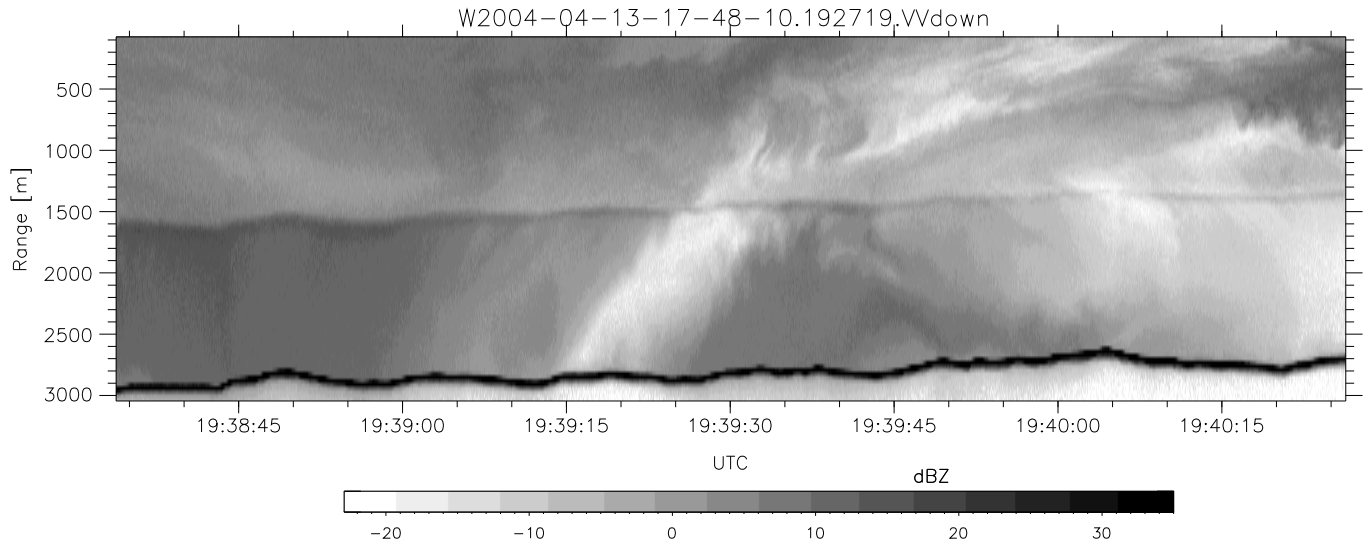
	Min	Max	Mean	Std	Varc%
hhN (dB)	-67.81	-64.22	-65.93	-75.88	10.1
vvN (dB)	-67.97	-64.15	-65.90	-75.77	10.3
hhL (dB)	-9.33	2.38	-0.12	-4.41	37.2
vvL (dB)	-13.94	4.39	-1.43	-4.55	48.7
ppN (m/s)	-12.35	12.66	-0.02	4.16	
ppT (m/s)	-97.56	100.05	-0.14	32.86	
hh/vv (dB)	NaN	61.51	NaN	42.66	-171
vh/hh (dB)	NaN	-27.47	-40.21	-38.05	164.
hv/vv (dB)	NaN	-33.56	-46.82	-43.33	223.
hnjmp (dB)				0.14	
vnjmp (dB)				0.13	



CIFEX 2004 Data (cal/250ns+2.5/100ns-3.5/500ns: 53.0,50.0)

W2004-04-13-17-48-10 - PPMAG4, IRIG:1/0/2  
 UTC: 17:48:10.07 to 20:28:38.69, Dur: 9628s  
 TimeLngth: 9628.56s, TimeInt: 28ms (35.4pps)  
 TimeCor=-13.0s, PPS(min,max,med): 35,36,35  
 Timeint/DSPdiff(mn,min,mx):28,28,28/28,28,28  
 Prof: 533 to 341754, NumProf(r/t): 35142/341221  
 ProcTime/Recs: 19:27:19-19:43:51/210852-245993  
 ADacqtime: 25ms; DRate: 198.4KB/s; Flags: 0, 0, 0  
 Pulse: 275ns, IFilt: 5.0MHz; ppPol: HH HV VV  
 TxPol: HHVV, PRF: 20 10 20 10 kHz, Noiseflg:4,3  
 Range: Delay 75m, Spacing 30m, Gates 100  
 Ave. Pulses: 84, Rng/Prof Aspect@90m/s: 11.8

	Min	Max	Mean	Std	Varc%
hhN (dB)	-67.81	-64.22	-65.93	-75.88	10.1
vvN (dB)	-67.97	-64.15	-65.90	-75.77	10.3
hhL (dB)	-9.33	2.38	-0.12	-4.41	37.2
vvL (dB)	-13.94	4.39	-1.43	-4.55	48.7
ppN (m/s)	-12.35	12.66	-0.02	4.16	
ppT (m/s)	-97.56	100.05	-0.14	32.86	
hh/vv (dB)	NaN	61.51	NaN	42.66	-171
vh/hh (dB)	NaN	-27.47	-40.21	-38.05	164.
hv/vv (dB)	NaN	-33.56	-46.82	-43.33	223.
hn_jmp (dB)				0.14	
vn_jmp (dB)				0.13	



CIFEX 2004 Data (cal/250ns+2.5/100ns-3.5/500ns: 53.0,50.0)

W2004-04-13-17-48-10 - PPMAG4, IRIG:1/0/2  
 UTC: 17:48:10.07 to 20:28:38.69, Dur: 9628s  
 TimeLngth: 9628.56s, TimeInt: 28ms (35.4pps)  
 TimeCor=-13.0s, PPS(min,max,med): 35,36,35  
 Timeint/DSPdiff(mn,min,mx):28,28,28/28,28,28  
 Prof: 533 to 341754, NumProf(r/t): 35142/341221  
 ProcTime/Recs: 19:27:19-19:43:51/210852-245993  
 ADacqtime: 25ms; DRate: 198.4KB/s; Flags: 0, 0, 0  
 Pulse: 275ns, IFfilt: 5.0MHz; ppPol: HH HV VV  
 TxPol: HHVV, PRF: 20 10 20 10 kHz, Noiseflg:4,3  
 Range: Delay 75m, Spacing 30m, Gates 100  
 Ave. Pulses: 84, Rng/Prof Aspect@90m/s: 11.8

	Min	Max	Mean	Std	Varc%
hhN (dB)	-67.81	-64.22	-65.93	-75.88	10.1
vvN (dB)	-67.97	-64.15	-65.90	-75.77	10.3
hhL (dB)	-9.33	2.38	-0.12	-4.41	37.2
vvL (dB)	-13.94	4.39	-1.43	-4.55	48.7
ppN (m/s)	-12.35	12.66	-0.02	4.16	
ppT (m/s)	-97.56	100.05	-0.14	32.86	
hh/vv (dB)	NaN	61.51	NaN	42.66	-171
vh/hh (dB)	NaN	-27.47	-40.21	-38.05	164.
hv/vv (dB)	NaN	-33.56	-46.82	-43.33	223.
hn_jmp (dB)				0.14	
vn_jmp (dB)				0.13	