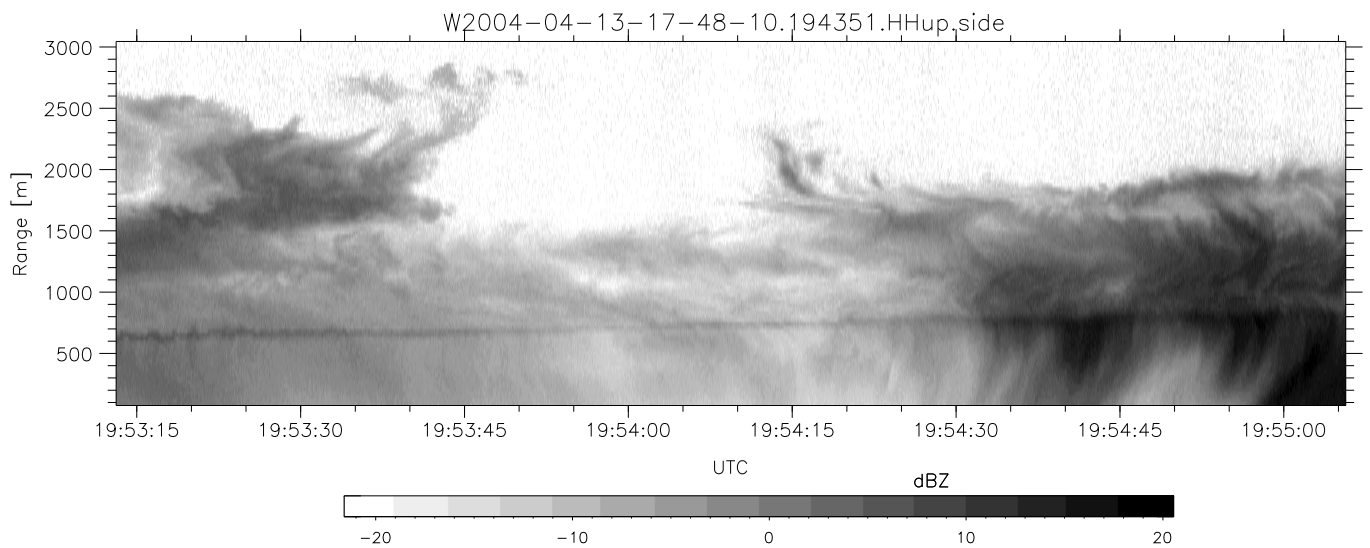
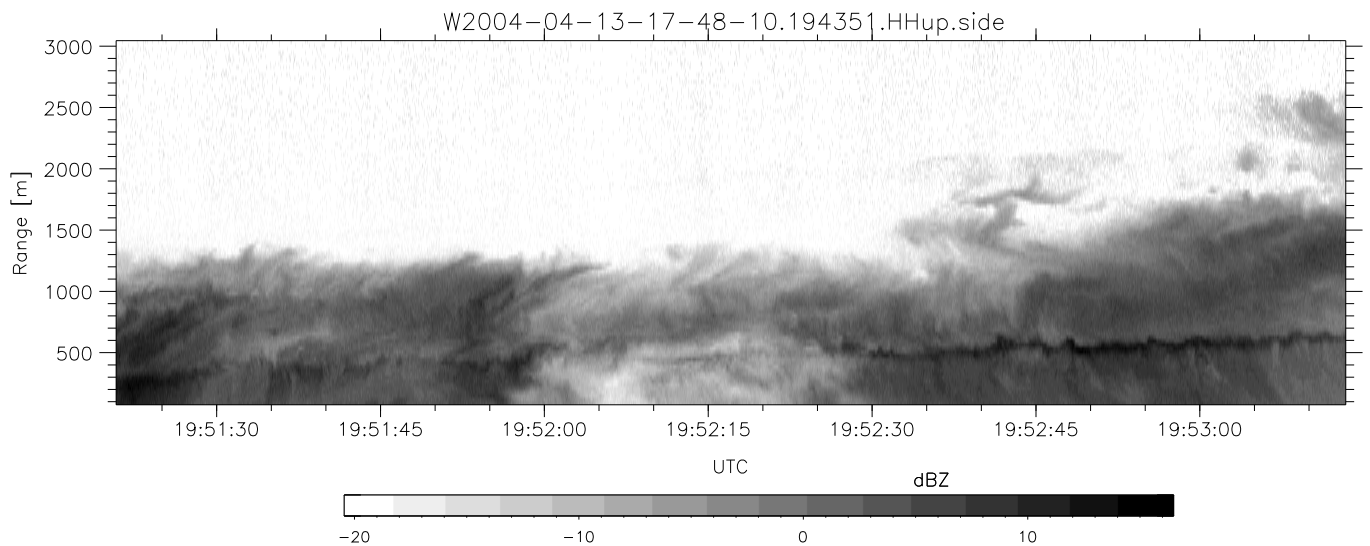
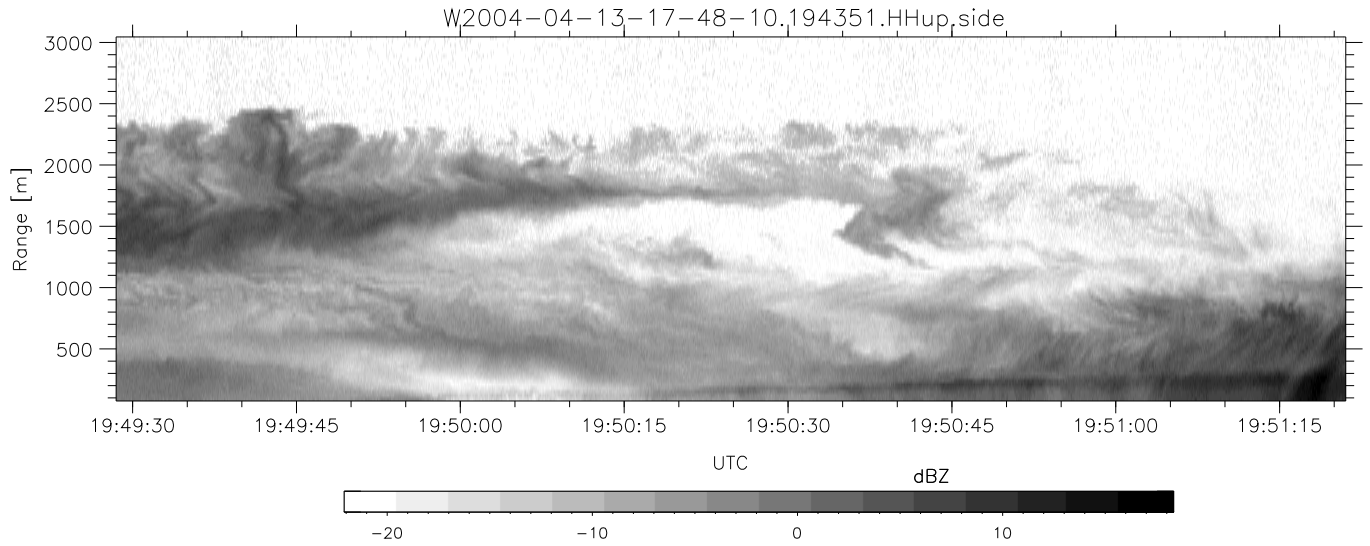


CIFEX 2004 Data (cal/250ns+2.5/100ns-3.5/500ns: 53.0,50.0)

W2004-04-13-17-48-10 - PPMAG4, IRIG:1/0/2
 UTC: 17:48:10.07 to 20:28:38.69, Dur: 9628s
 TimeLngth: 9628.56s, TimeInt: 28ms (35.4pps)
 TimeCor=-13.0s, PPS(min,max,med): 35,36,35
 Timeint/DSPdiff(mn,min,mx):28,28,30/28,28,28
 Prof: 533 to 341754, NumProf(r/t): 35142/341221
 ProcTime/Recs: 19:43:51-20:00:23/245994-281135
 ADacqtime: 25ms; DRate: 198.4KB/s; Flags: 0, 0, 0
 Pulse: 275ns, IFfilt: 5.0MHz; ppPol: HH HV VV
 TxPol: HHVV, PRF: 20 10 20 10 kHz, NoiseFlg:4,3
 Range: Delay 75m, Spacing 30m, Gates 100
 Ave. Pulses: 84, Rng/Prof Aspect@90m/s: 11.8

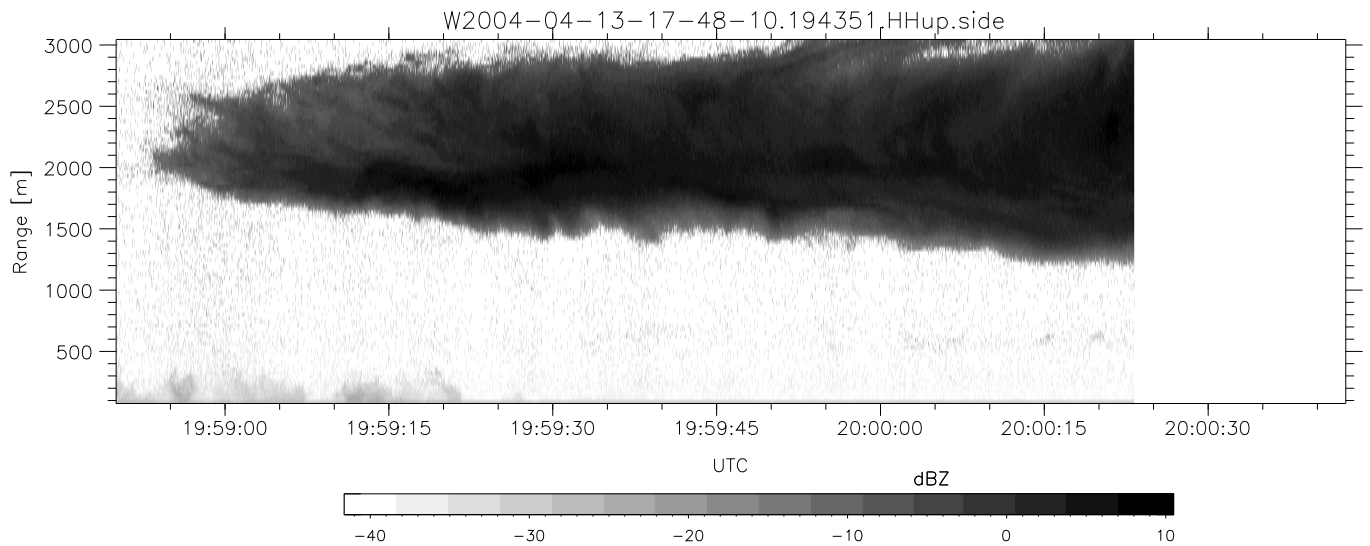
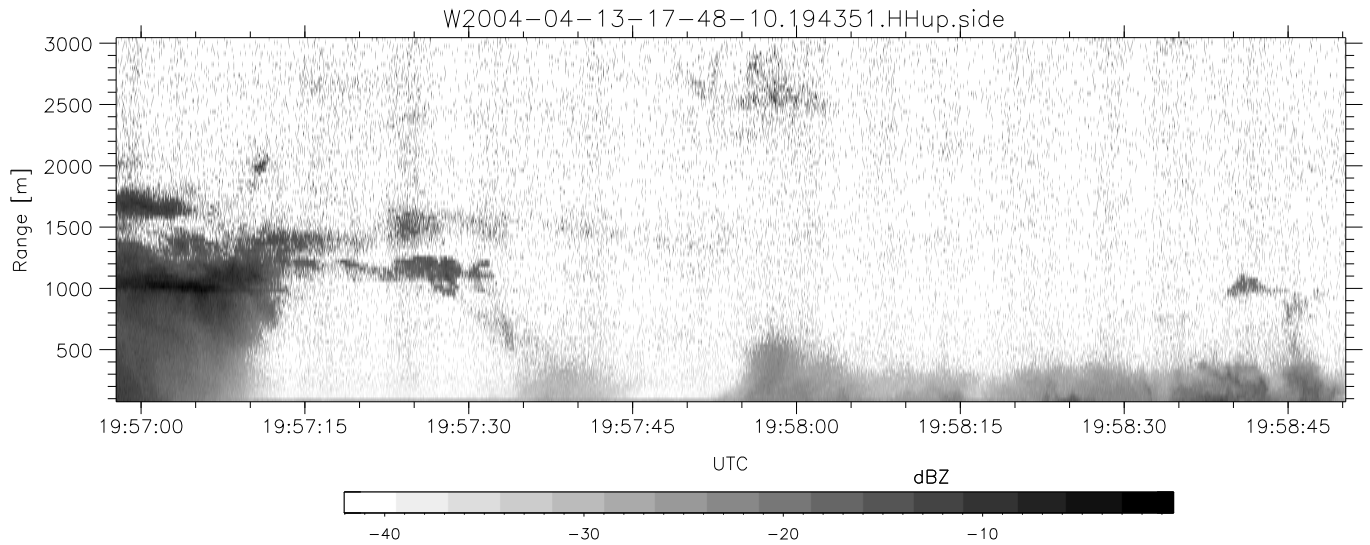
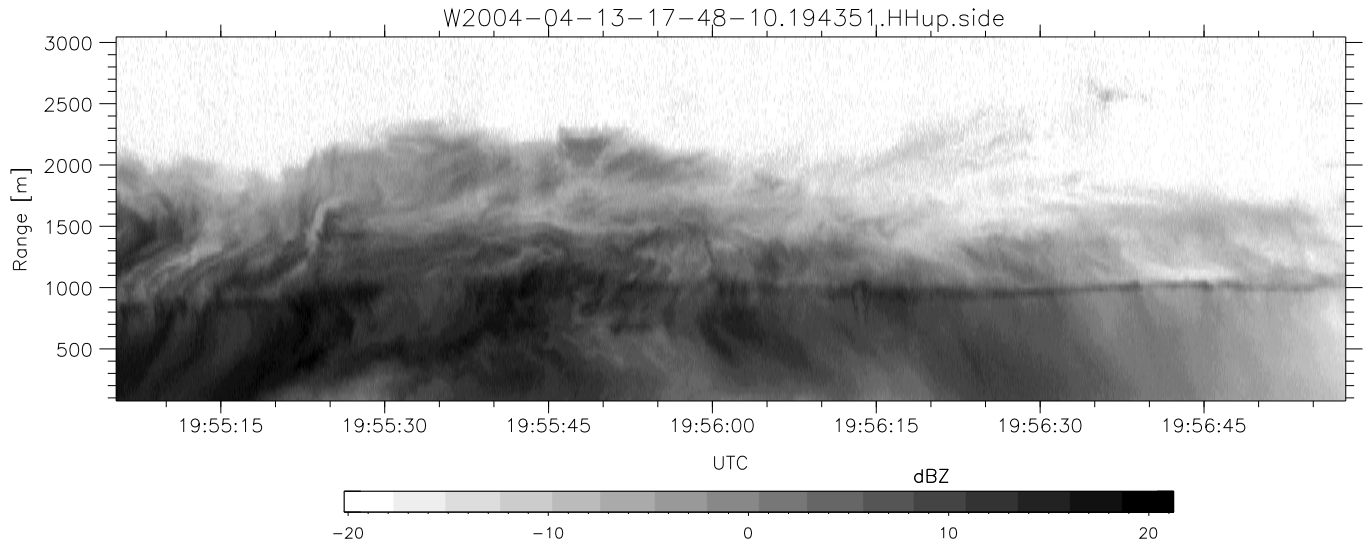
	Min	Max	Mean	Std	Varc%
hhN (dB)	-67.78	-64.31	-65.98	-75.98	10.0
vvN (dB)	-67.85	-64.45	-66.04	-75.98	10.1
hhL (dB)	-24.46	2.40	-3.50	-3.56	98.6
vvL (dB)	-17.35	6.00	4.31	2.04	59.3
ppN (m/s)	-12.92	12.62	-0.01	4.14	
ppT (m/s)	-102.1	99.73	-0.09	32.74	
hh/vv (dB)	NaN	Inf	Inf	-NaN	-NaN
vh/hh (dB)	NaN	5.56	-24.66	-13.37	1344
hv/vv (dB)	NaN	-32.04	-47.02	-43.16	243.
hn_jmp (dB)			0.14		
vn_jmp (dB)			0.13		



CIFEX 2004 Data (cal/250ns+2.5/100ns-3.5/500ns: 53.0,50.0)

W2004-04-13-17-48-10 - PPMAG4, IRIG:1/0/2
 UTC: 17:48:10.07 to 20:28:38.69, Dur: 9628s
 TimeLngth: 9628.56s, TimeInt: 28ms (35.4pps)
 TimeCor=-13.0s, PPS(min,max,med): 35,36,35
 Timeint/DSPdiff(mn,min,mx):28,28,30/28,28,28
 Prof: 533 to 341754, NumProf(r/t): 35142/341221
 ProcTime/Recs: 19:43:51-20:00:23/245994-281135
 ADacqtime: 25ms; DRate: 198.4KB/s; Flags: 0, 0, 0
 Pulse: 275ns, IFilt: 5.0MHz; ppPol: HH HV VV
 TxPol: HHVV, PRF: 20 10 20 10 kHz, NoiseFlg:4,3
 Range: Delay 75m, Spacing 30m, Gates 100
 Ave. Pulses: 84, Rng/Prof Aspect@90m/s: 11.8

	Min	Max	Mean	Std	Varc%
hhN(dB)	-67.78	-64.31	-65.98	-75.98	10.0
vvN(dB)	-67.85	-64.45	-66.04	-75.98	10.1
hhL(dB)	-24.46	2.40	-3.50	-3.56	98.6
vvL(dB)	-17.35	6.00	4.31	2.04	59.3
ppN(m/s)	-12.92	12.62	-0.01	4.14	
ppT(m/s)	-102.1	99.73	-0.09	32.74	
hh/vv(dB)	NaN	Inf	Inf	-NaN	-NaN
vh/hh(dB)	NaN	5.56	-24.66	-13.37	1344
hv/vv(dB)	NaN	-32.04	-47.02	-43.16	243.
hnjmp(dB)			0.14		
vnjmp(dB)			0.13		



CIFEX 2004 Data (cal/250ns+2.5/100ns-3.5/500ns: 53.0,50.0)

W2004-04-13-17-48-10 - PPMAG4, IRIG:1/0/2
 UTC: 17:48:10.07 to 20:28:38.69, Dur: 9628s
 TimeLngth: 9628.56s, TimeInt: 28ms (35.4pps)
 TimeCor=-13.0s, PPS(min,max,med): 35,36,35
 Timeint/DSPdiff(mn,min,mx):28,28,30/28,28,28
 Prof: 533 to 341754, NumProf(r/t): 35142/341221
 ProcTime/Recs: 19:43:51-20:00:23/245994-281135
 ADacqtime: 25ms; DRate: 198.4KB/s; Flags: 0, 0, 0
 Pulse: 275ns, IFilt: 5.0MHz; ppPol: HH HV VV
 TxPol: HHVV, PRF: 20 10 20 10 kHz, NoiseFlg:4,3
 Range: Delay 75m, Spacing 30m, Gates 100
 Ave. Pulses: 84, Rng/Prof Aspect@90m/s: 11.8

	Min	Max	Mean	Std	Varc%
hhN (dB)	-67.78	-64.31	-65.98	-75.98	10.0
vvN (dB)	-67.85	-64.45	-66.04	-75.98	10.1
hhL (dB)	-24.46	2.40	-3.50	-3.56	98.6
vvL (dB)	-17.35	6.00	4.31	2.04	59.3
ppN (m/s)	-12.92	12.62	-0.01	4.14	
ppT (m/s)	-102.1	99.73	-0.09	32.74	
hh/vv (dB)	NaN	Inf	Inf	-NaN	-NaN
vh/hh (dB)	NaN	5.56	-24.66	-13.37	1344
hv/vv (dB)	NaN	-32.04	-47.02	-43.16	243.
hnjmp (dB)			0.14		
vnjmp (dB)			0.13		