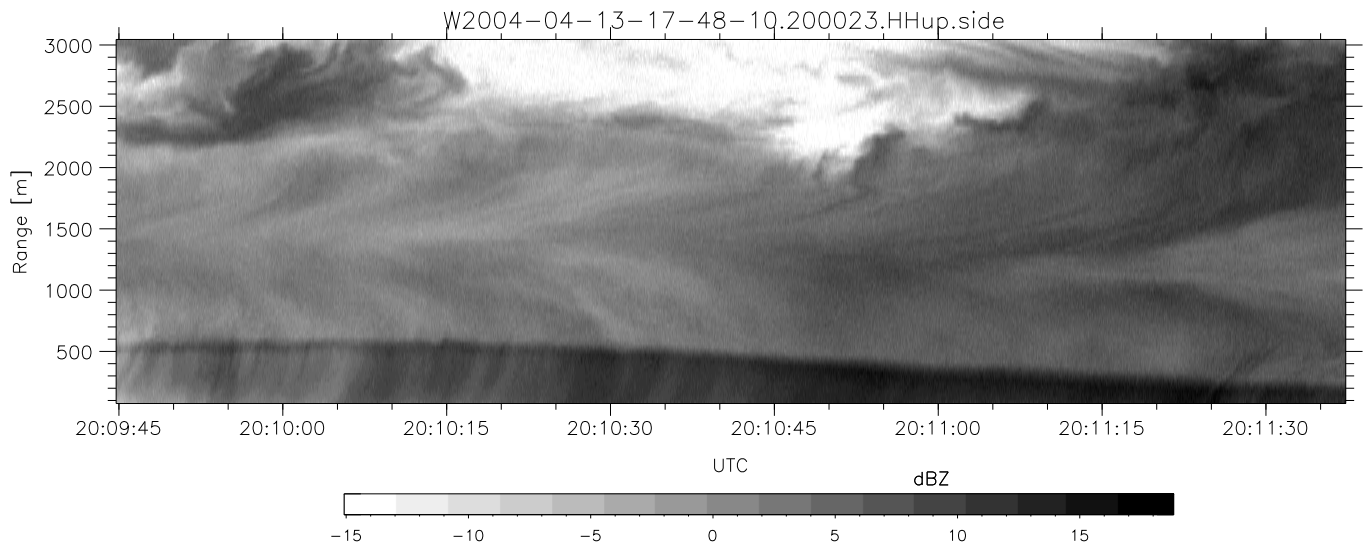
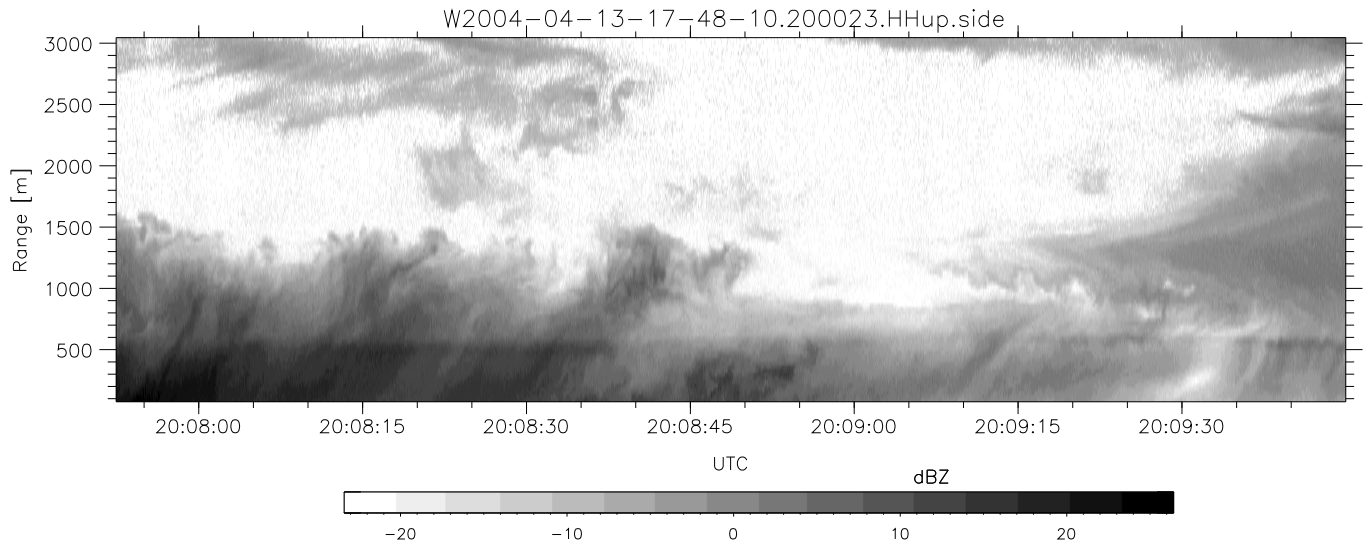
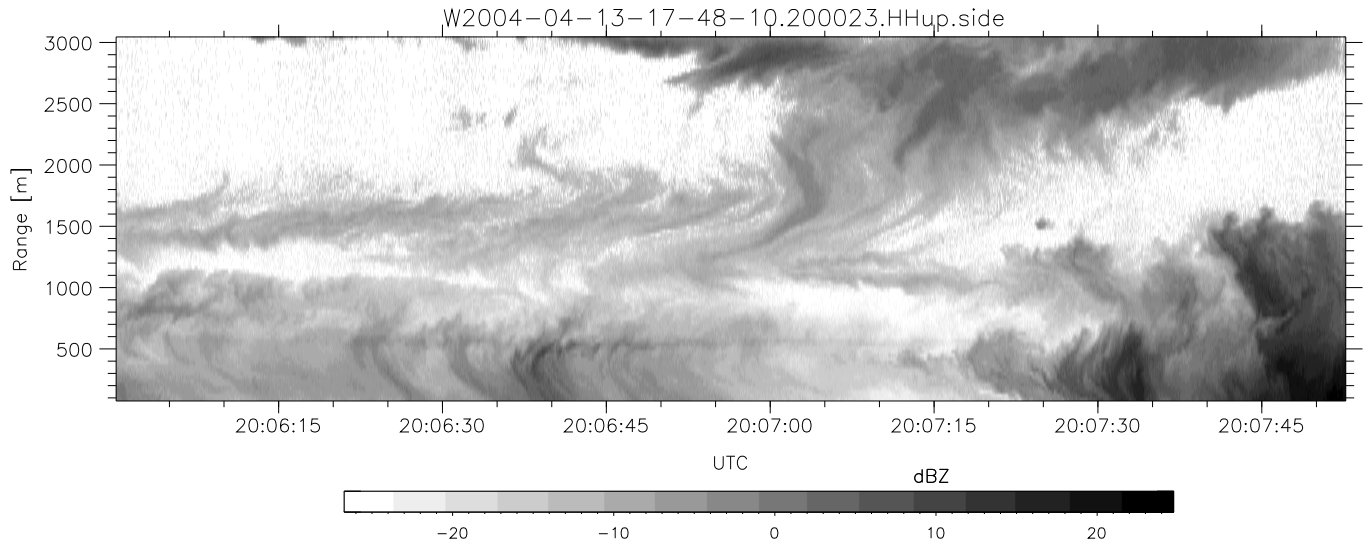


CIFEX 2004 Data (cal/250ns+2.5/100ns-3.5/500ns: 53.0,50.0)

W2004-04-13-17-48-10 - PPMAG4, IRIG:1/0/2
 UTC: 17:48:10.07 to 20:28:38.69, Dur: 9628s
 TimeLngth: 9628.56s, TimeInt: 28ms (35.4pps)
 TimeCor=-13.0s, PPS(min,max,med): 35,36,35
 Timeint/DSPdiff(mn,min,mx):28,28,37/28,28,28
 Prof: 533 to 341754, NumProf(r/t): 35142/341221
 ProcTime/Recs: 20:00:23-20:16:54/281136-316277
 ADacqtime: 25ms; DRate: 198.4KB/s; Flags: 0, 0, 0
 Pulse: 275ns, IFfilt: 5.0MHz; ppPol: HH HV VV
 TxPol: HHVV, PRF: 20 10 20 10 kHz, Noiseflg:4,2
 Range: Delay 75m, Spacing 30m, Gates 100
 Ave. Pulses: 84, Rng/Prof Aspect@90m/s: 11.8

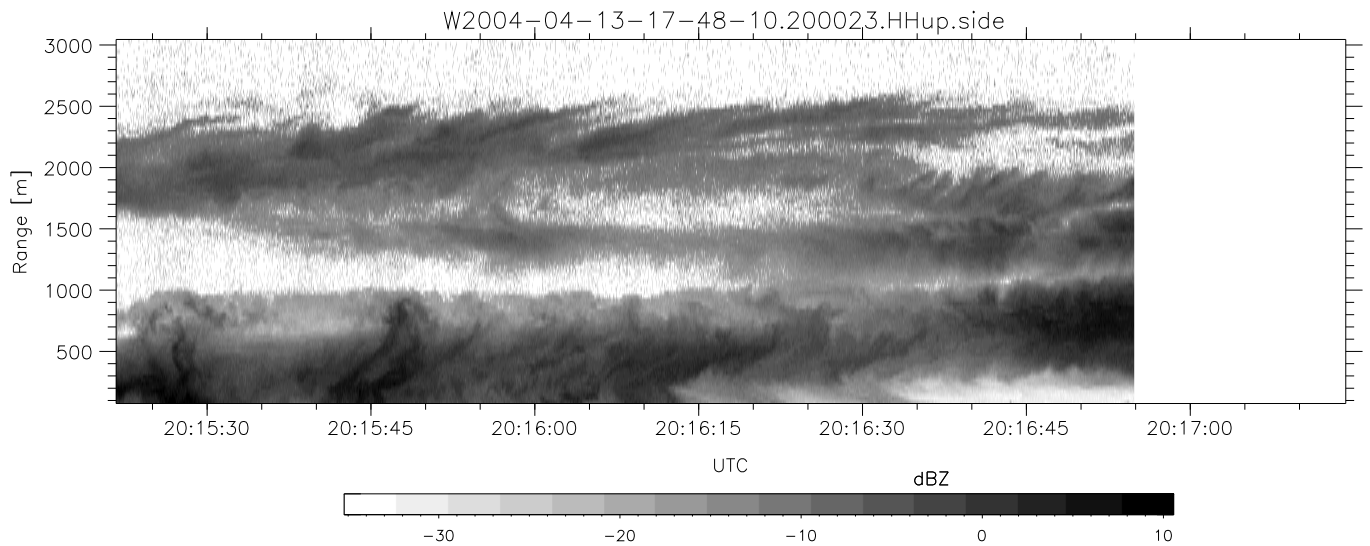
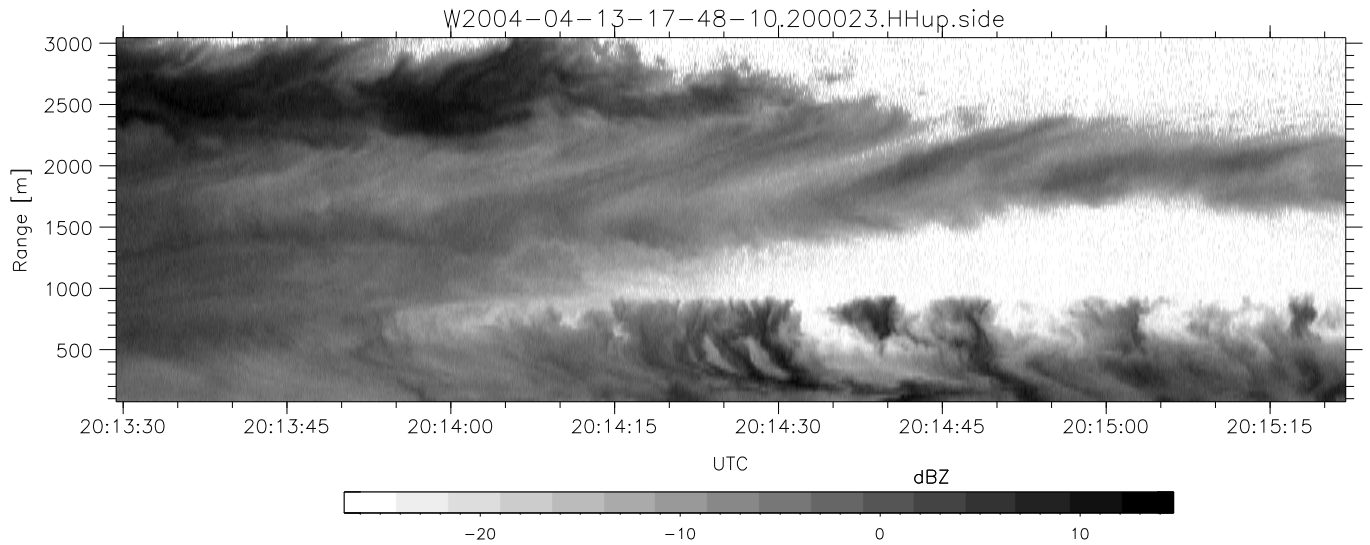
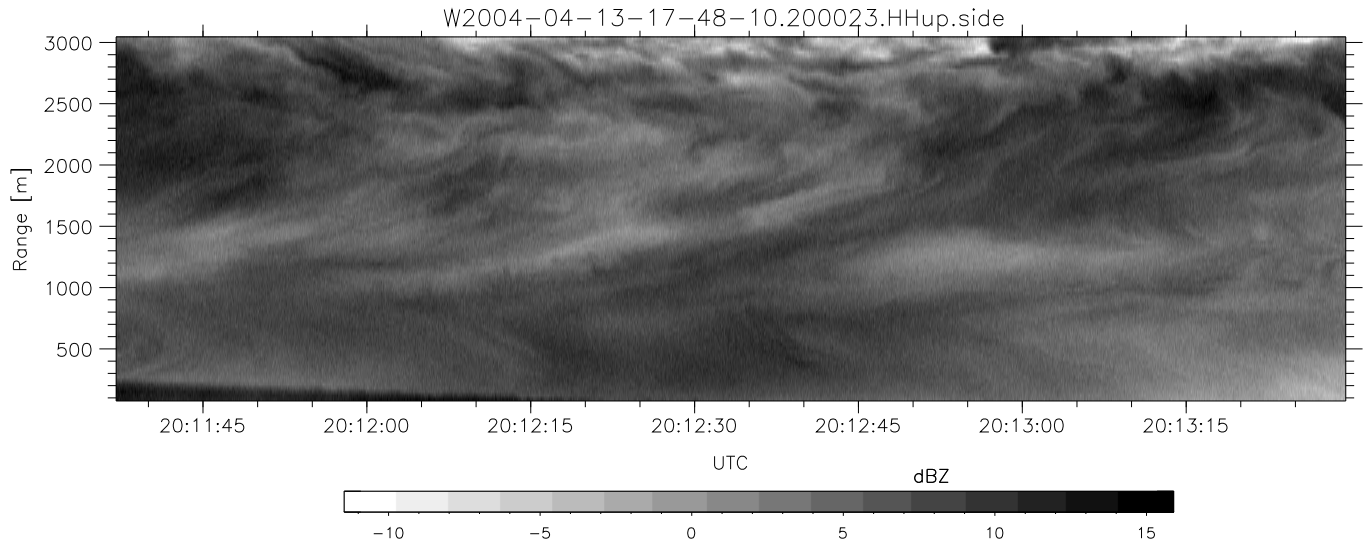
	Min	Max	Mean	Std	Varc%
hhN(dB)	-67.88	-64.17	-66.02	-76.00	10.0
vvN(dB)	-68.01	-64.49	-66.11	-76.06	10.1
hhL(dB)	-14.39	1.82	-3.10	-4.56	71.4
vvL(dB)	-3.12	6.00	4.80	0.10	33.9
ppN(m/s)	-12.80	12.70	-0.01	4.14	
ppT(m/s)	-101.1	100.31	-0.08	32.69	
hh/vv(dB)	NaN	79.84	21.63	50.83	8321
vh/hh(dB)	NaN	4.68	-31.30	-17.15	2599
hv/vv(dB)	NaN	-30.22	-47.90	-43.90	251.
hnjmp(dB)			0.14		
vnjmp(dB)			0.14		



CIFEX 2004 Data (cal/250ns+2.5/100ns-3.5/500ns: 53.0,50.0)

W2004-04-13-17-48-10 - PPMAG4, IRIG:1/0/2
 UTC: 17:48:10.07 to 20:28:38.69, Dur: 9628s
 TimeLngth: 9628.56s, TimeInt: 28ms (35.4pps)
 TimeCor=-13.0s, PPS(min,max,med): 35,36,35
 Timeint/DSPdiff(mn,min,mx):28,28,37/28,28,28
 Prof: 533 to 341754, NumProf(r/t): 35142/341221
 ProcTime/Recs: 20:00:23-20:16:54/281136-316277
 ADacqtime: 25ms; DRate: 198.4KB/s; Flags: 0, 0, 0
 Pulse: 275ns, IFilt: 5.0MHz; ppPol: HH HV VV
 TxPol: HHVV, PRF: 20 10 20 10 kHz, NoiseFlg:4,2
 Range: Delay 75m, Spacing 30m, Gates 100
 Ave. Pulses: 84, Rng/Prof Aspect@90m/s: 11.8

	Min	Max	Mean	Std	Varc%
hhN (dB)	-67.88	-64.17	-66.02	-76.00	10.0
vvN (dB)	-68.01	-64.49	-66.11	-76.06	10.1
hhL (dB)	-14.39	1.82	-3.10	-4.56	71.4
vvL (dB)	-3.12	6.00	4.80	0.10	33.9
ppN (m/s)	-12.80	12.70	-0.01	4.14	
ppT (m/s)	-101.1	100.31	-0.08	32.69	
hh/vv (dB)	NaN	79.84	21.63	50.83	8321
vh/hh (dB)	NaN	4.68	-31.30	-17.15	2599
hv/vv (dB)	NaN	-30.22	-47.90	-43.90	251.
hn_jmp (dB)				0.14	
vn_jmp (dB)				0.14	



CIFEX 2004 Data (cal/250ns+2.5/100ns-3.5/500ns: 53.0,50.0)

W2004-04-13-17-48-10 - PPMAG4, IRIG:1/0/2
 UTC: 17:48:10.07 to 20:28:38.69, Dur: 9628s
 TimeLngth: 9628.56s, TimeInt: 28ms (35.4pps)
 TimeCor=-13.0s, PPS(min,max,med): 35,36,35
 Timeint/DSPdiff(mn,min,mx):28,28,37/28,28,28
 Prof: 533 to 341754, NumProf(r/t): 35142/341221
 ProcTime/Recs: 20:00:23-20:16:54/281136-316277
 ADacqtime: 25ms; DRate: 198.4KB/s; Flags: 0, 0, 0
 Pulse: 275ns, IFfilt: 5.0MHz; ppPol: HH HV VV
 TxPol: HHVV, PRF: 20 10 20 10 kHz, Noiseflg:4,2
 Range: Delay 75m, Spacing 30m, Gates 100
 Ave. Pulses: 84, Rng/Prof Aspect@90m/s: 11.8

	Min	Max	Mean	Std	Varc%
hhN(dB)	-67.88	-64.17	-66.02	-76.00	10.0
vvN(dB)	-68.01	-64.49	-66.11	-76.06	10.1
hhL(dB)	-14.39	1.82	-3.10	-4.56	71.4
vvL(dB)	-3.12	6.00	4.80	0.10	33.9
ppN(m/s)	-12.80	12.70	-0.01	4.14	
ppT(m/s)	-101.1	100.31	-0.08	32.69	
hh/vv(dB)	NaN	79.84	21.63	50.83	8321
vh/hh(dB)	NaN	4.68	-31.30	-17.15	2599
hv/vv(dB)	NaN	-30.22	-47.90	-43.90	251.
hnjmp(dB)				0.14	
vnjmp(dB)				0.14	