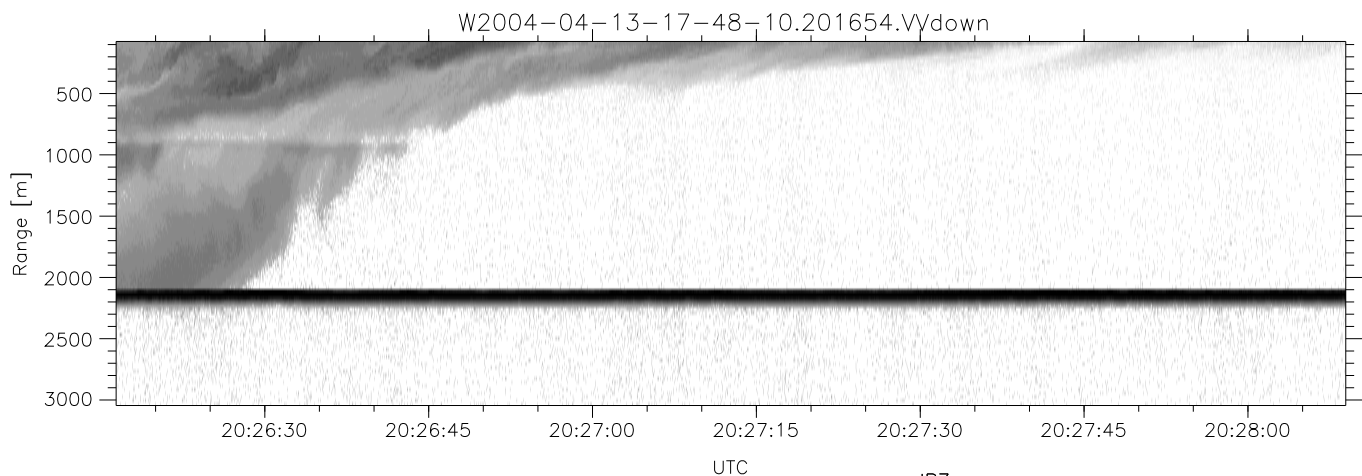
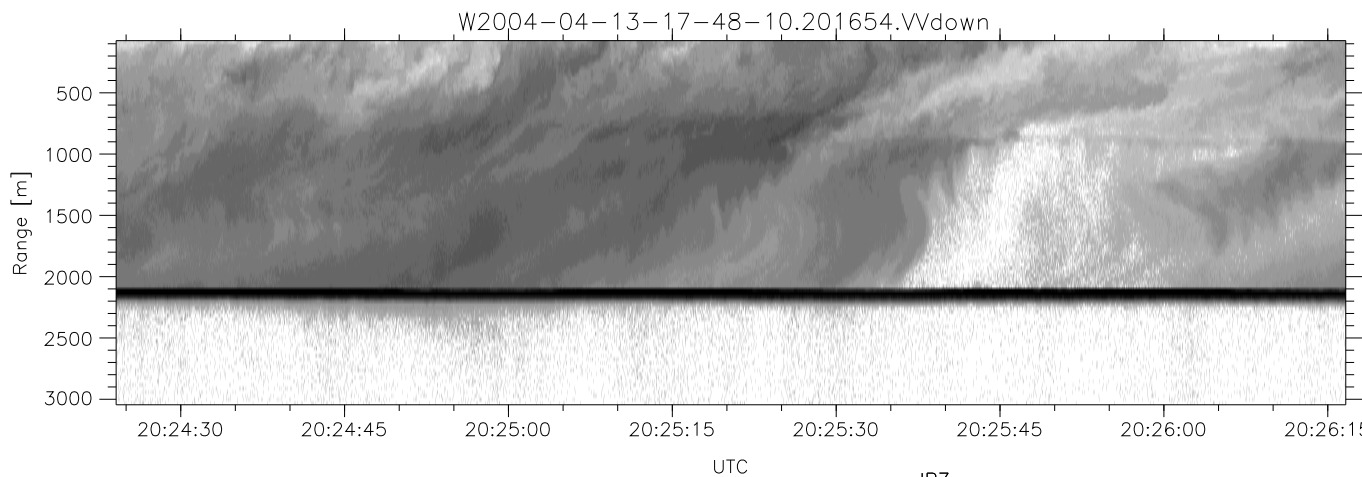
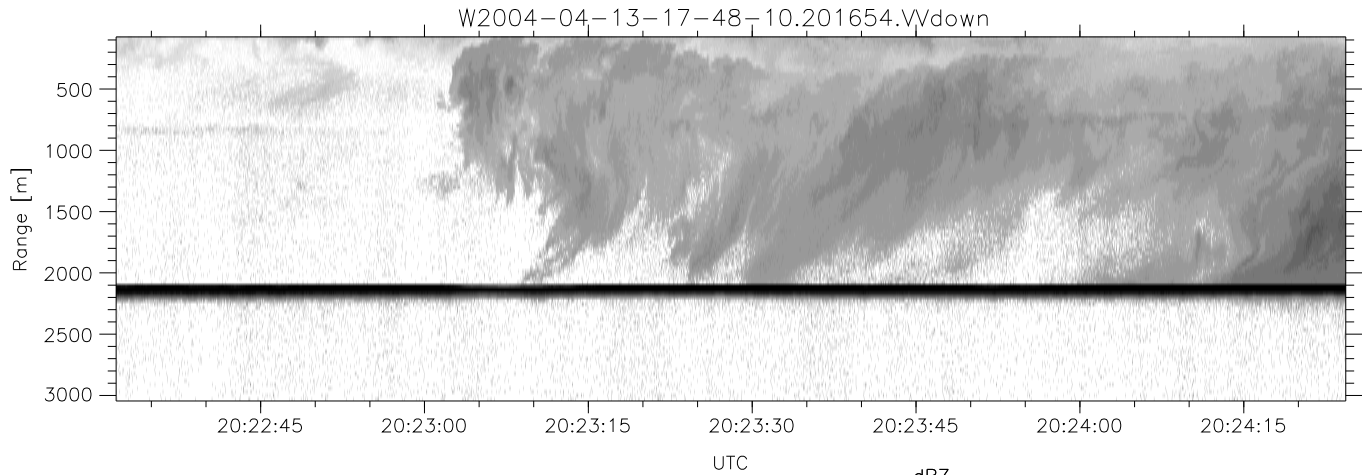


CIFEX 2004 Data (cal/250ns+2.5/100ns-3.5/500ns: 53.0,50.0)

W2004-04-13-17-48-10 - PPMAG4, IRIG:1/0/2  
 UTC: 17:48:10.07 to 20:28:38.69, Dur: 9628s  
 TimeLngth: 9628.88s, TimeInt: 28ms (35.4pps)  
 TimeCor=-13.0s, PPS(min,max,med): 35,36,35  
 Timeint/DSPdiff(mn,min,mx):28,28,28/28,28,28  
 Prof: 533 to 341754, NumProf(r/t): 24943/341221  
 ProcTime/Recs: 20:16:54-20:28:38/316278-341220  
 ADacqtime: 25ms; DRate: 198.4KB/s; Flags: 0, 0, 0  
 Pulse: 275ns, IFfilt: 5.0MHz; ppPol: HH HV VV  
 TxPol: HHVV, PRF: 20 10 20 10 kHz, Noiseflg:4,1  
 Range: Delay 75m, Spacing 30m, Gates 100  
 Ave. Pulses: 84, Rng/Prof Aspect@90m/s: 11.8

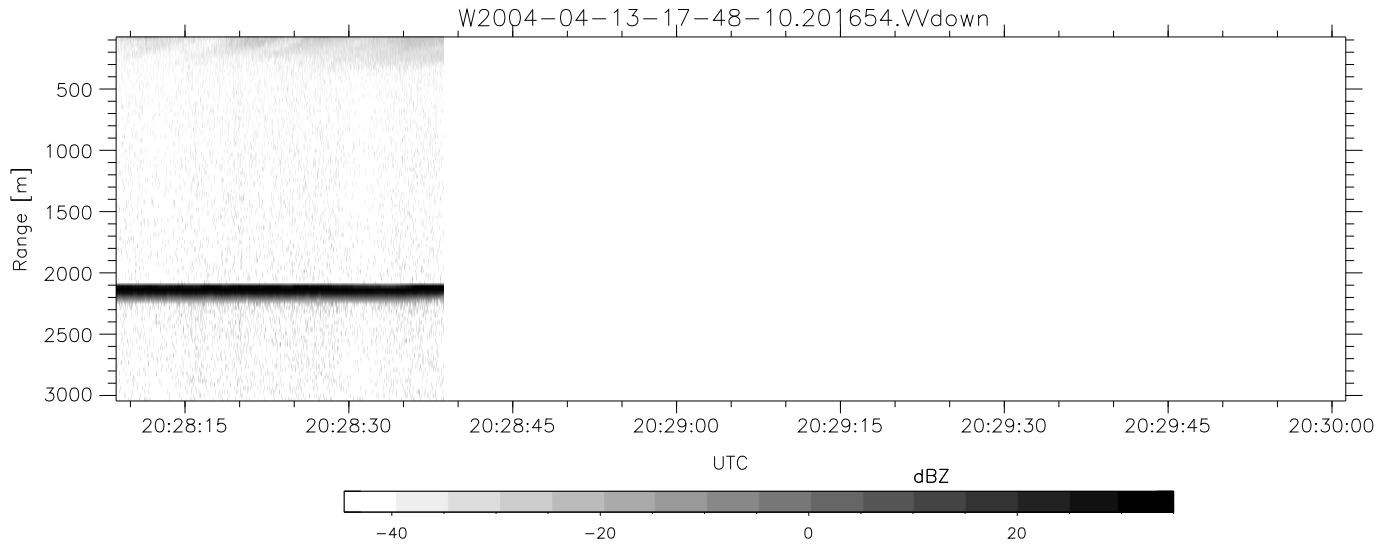
	Min	Max	Mean	Std	Varc%
hhN (dB)	-68.00	-64.56	-66.19	-76.21	10.0
vvN (dB)	-67.99	-64.62	-66.21	-76.11	10.2
hhL (dB)	-22.73	-0.50	-5.25	-6.79	70.1
vvL (dB)	-14.51	6.00	0.74	1.78	127.
ppN (m/s)	-12.87	12.31	-0.00	4.15	
ppT (m/s)	-101.6	97.29	-0.03	32.76	
hh/vv (dB)	NaN	73.14	20.59	46.70	4081
vh/hh (dB)	NaN	-28.34	-38.44	-36.66	150.
hv/vv (dB)	NaN	-34.29	-50.64	-43.91	471.
hn_jmp (dB)			0.15		
vn_jmp (dB)			0.15		



CIFEX 2004 Data (cal/250ns+2.5/100ns-3.5/500ns: 53.0,50.0)

W2004-04-13-17-48-10 - PPMAG4, IRIG:1/0/2  
 UTC: 17:48:10.07 to 20:28:38.69, Dur: 9628s  
 TimeLngth: 9628.88s, TimeInt: 28ms (35.4pps)  
 TimeCor=-13.0s, PPS(min,max,med): 35,36,35  
 Timeint/DSPdiff(mn,min,mx):28,28,28/28,28,28  
 Prof: 533 to 341754, NumProf(r/t): 24943/341221  
 ProcTime/Recs: 20:16:54-20:28:38/316278-341220  
 ADacqtime: 25ms; DRate: 198.4KB/s; Flags: 0, 0, 0  
 Pulse: 275ns, IFilt: 5.0MHz; ppPol: HH HV VV  
 TxPol: HHVV, PRF: 20 10 20 10 kHz, NoiseFlg:4,1  
 Range: Delay 75m, Spacing 30m, Gates 100  
 Ave. Pulses: 84, Rng/Prof Aspect@90m/s: 11.8

	Min	Max	Mean	Std	Varc%
hhN (dB)	-68.00	-64.56	-66.19	-76.21	10.0
vvN (dB)	-67.99	-64.62	-66.21	-76.11	10.2
hhL (dB)	-22.73	-0.50	-5.25	-6.79	70.1
vvL (dB)	-14.51	6.00	0.74	1.78	127.
ppN (m/s)	-12.87	12.31	-0.00	4.15	
ppT (m/s)	-101.6	97.29	-0.03	32.76	
hh/vv (dB)	NaN	73.14	20.59	46.70	4081
vh/hh (dB)	NaN	-28.34	-38.44	-36.66	150.
hv/vv (dB)	NaN	-34.29	-50.64	-43.91	471.
hnjmp (dB)			0.15		
vnjmp (dB)			0.15		



CIFEX 2004 Data (cal/250ns+2.5/100ns-3.5/500ns: 53.0,50.0)

W2004-04-13-17-48-10 - PPMAG4, IRIG:1/0/2  
 UTC: 17:48:10.07 to 20:28:38.69, Dur: 9628s  
 TimeLngth: 9628.88s, TimeInt: 28ms (35.4pps)  
 TimeCor=-13.0s, PPS(min,max,med): 35,36,35  
 Timeint/DSPdiff(mn,min,mx):28,28,28/28,28,28  
 Prof: 533 to 341754, NumProf(r/t): 24943/341221  
 ProcTime/Recs: 20:16:54-20:28:38/316278-341220  
 ADacqtime: 25ms; DRate: 198.4KB/s; Flags: 0, 0, 0  
 Pulse: 275ns, IFilt: 5.0MHz; ppPol: HH HV VV  
 TxPol: HHVV, PRF: 20 10 20 10 kHz, NoiseFlg:4,1  
 Range: Delay 75m, Spacing 30m, Gates 100  
 Ave. Pulses: 84, Rng/Prof Aspect@90m/s: 11.8

	Min	Max	Mean	Std	Varc%
hhN(dB)	-68.00	-64.56	-66.19	-76.21	10.0
vvN(dB)	-67.99	-64.62	-66.21	-76.11	10.2
hhL(dB)	-22.73	-0.50	-5.25	-6.79	70.1
vvL(dB)	-14.51	6.00	0.74	1.78	127.
ppN(m/s)	-12.87	12.31	-0.00	4.15	
ppT(m/s)	-101.6	97.29	-0.03	32.76	
hh/vv(dB)	NaN	73.14	20.59	46.70	4081
vh/hh(dB)	NaN	-28.34	-38.44	-36.66	150.
hv/vv(dB)	NaN	-34.29	-50.64	-43.91	471.
hnjmp(dB)			0.15		
vnjmp(dB)			0.15		