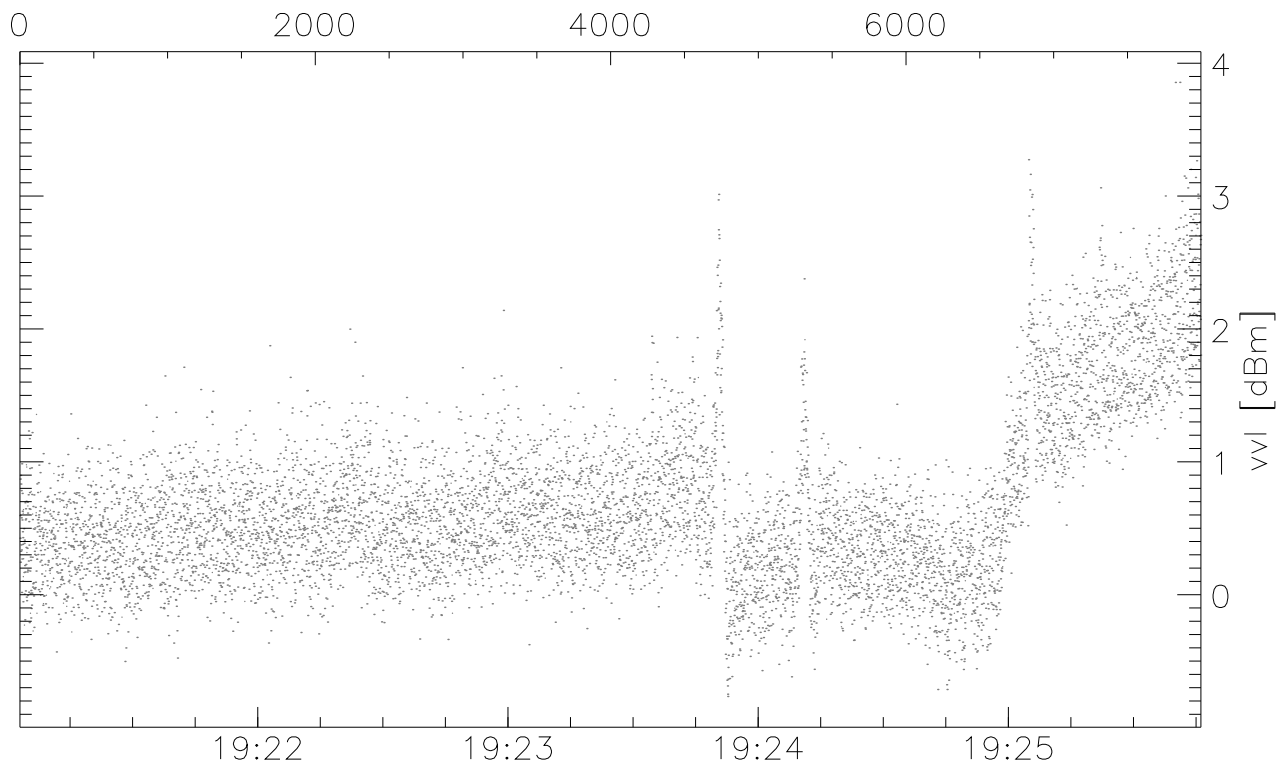
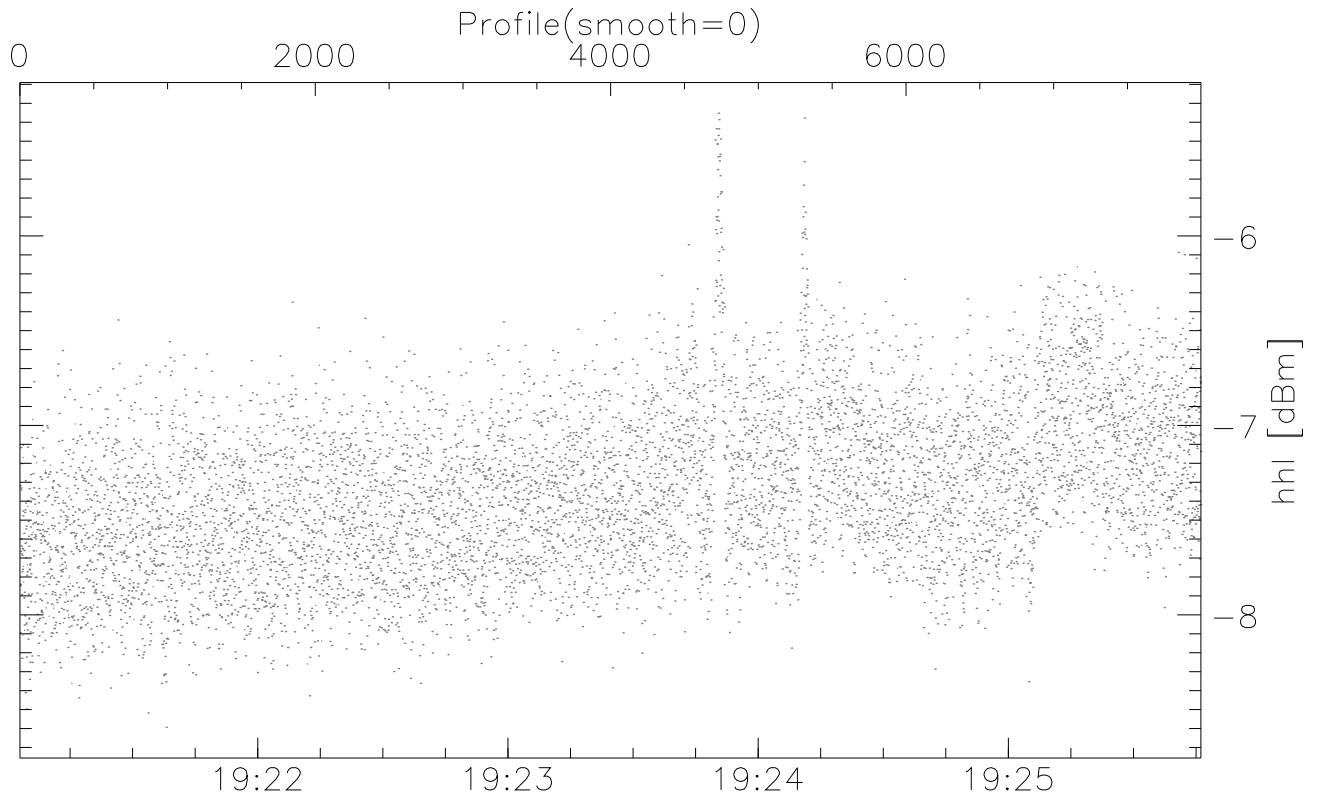


CIFEX 2004

W2004-04-14-18-51-18 - SPPMAG, IRIG:1/0/2
 UTC: 18:51:18.24 to 19:25:46.17, Dur: 2068s
 TimeLngth: 2067.83s, TimeInt: 35ms (28.2pps)
 TimeCor=-13.0s, PPS(min,max,med): 28,29,28
 Timeint/DSPdiff(mn,min,mx):35,35,35/35,35,35
 Prof: 412 to 58810, NumProf(r/t): 7998/58398
 ProcTime/Recs: 19:21:02-19:25:46/50400-58397
 ADacqtime: 32ms; DRate: 45.6KB/s; Flags: 0, 0, 0
 Pulse: 275ns, IFfilt: 5.0MHz; ppPol: VV
 TxPol: V, PRF: 20 20 20 10 kHz, NoiseFlg:1234
 Range: Delay 75m, Spacing 30m, Gates 100
 Ave. Pulses: 520, Rng/Prof Aspect@90m/s: 9.4

	Min	Max	Mean	Std	Varc%
hhN(dB)	-66.77	-65.56	-66.17	-79.82	4.3
vvN(dB)	-66.85	-64.29	-66.16	-79.39	4.8
vvL(dB)	-0.77	3.86	0.74	-7.28	15.8
hvL(dB)	-8.59	-5.35	-7.32	-17.38	9.9
ppN(m/s)	-15.80	15.80	0.07	8.96	
ppT(m/s)	-0.05	0.01	-0.02	0.01	
hv/vv(dB)	-99	-99	-99	-99	-99
hnjmp(dB)			-0.15		
vnjmp(dB)			-0.15		

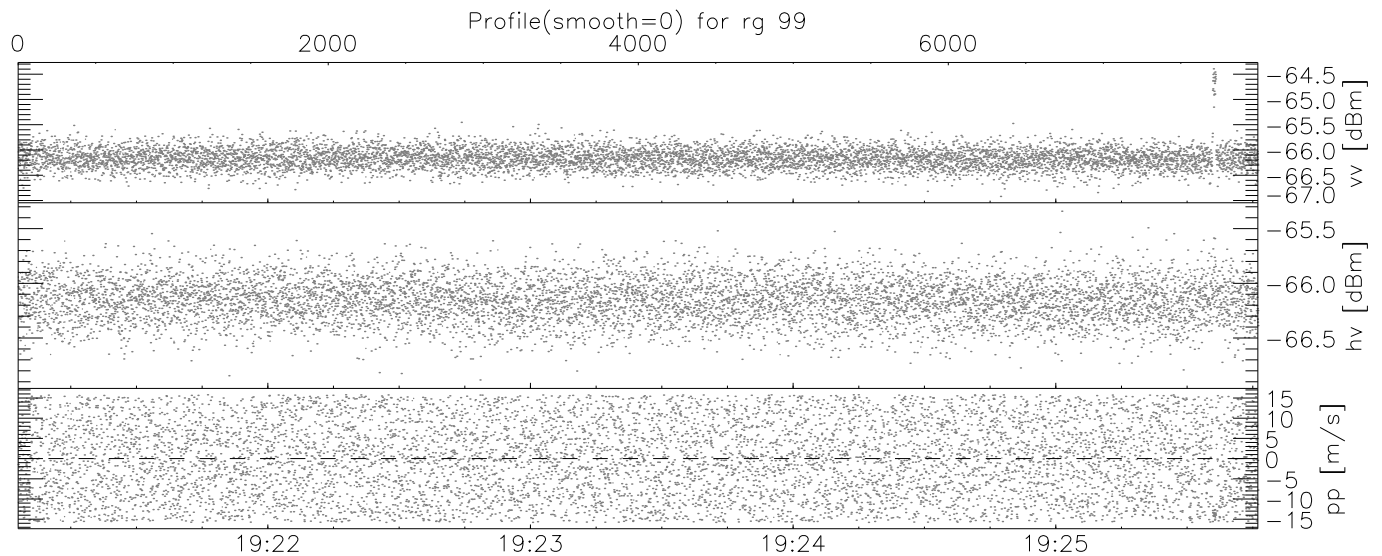
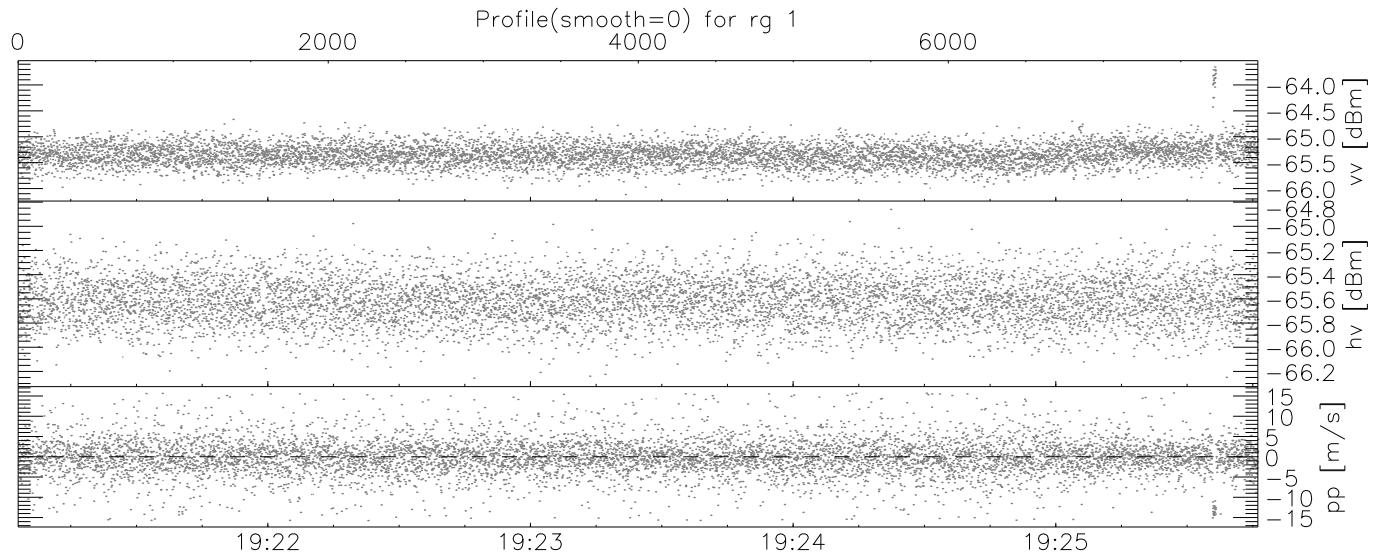
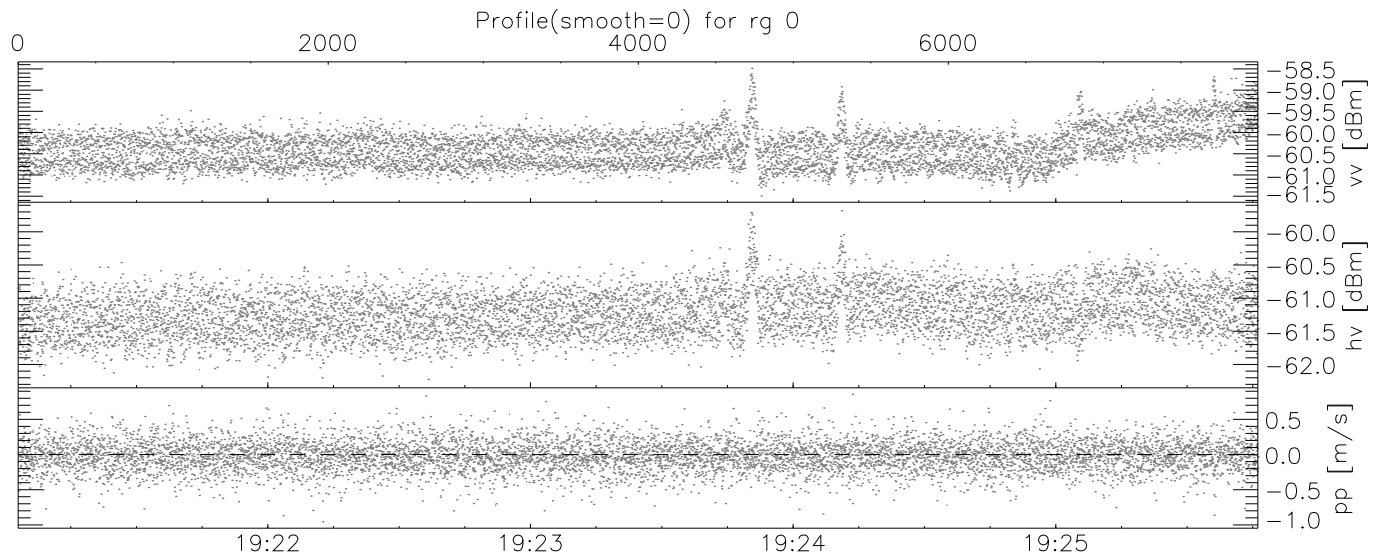


UTC

CIFEX 2004

W2004-04-14-18-51-18 - SPPMAG, IRIG:1/0/2
 UTC: 18:51:18.24 to 19:25:46.17, Dur: 2068s
 TimeLngth: 2067.83s, TimeInt: 35ms (28.2pps)
 TimeCor=-13.0s, PPS(min,max,med): 28,29,28
 Timeint/DSPdiff(mn,min,mx):35,35,35/35,35,35
 Prof: 412 to 58810, NumProf(r/t): 7998/58398
 ProcTime/Recs: 19:21:02-19:25:46/50400-58397
 ADacqtime: 32ms; DRate: 45.6KB/s; Flags: 0, 0, 0
 Pulse: 275ns, IFfilt: 5.0MHz; ppPol: VV
 TxPol: V, PRF: 20 20 20 10 kHz, NoiseFlg:1234
 Range: Delay 75m, Spacing 30m, Gates 100
 Ave. Pulses: 520, Rng/Prof Aspect@90m/s: 9.4

	Min	Max	Mean	Std	Varc%
hhN(dB)	-66.77	-65.56	-66.17	-79.82	4.3
vvN(dB)	-66.85	-64.29	-66.16	-79.39	4.8
vvL(dB)	-0.77	3.86	0.74	-7.28	15.8
hvL(dB)	-8.59	-5.35	-7.32	-17.38	9.9
ppN(m/s)	-15.80	15.80	0.07	8.96	
ppT(m/s)	-0.05	0.01	-0.02	0.01	
hn/vv(dB)	-99	-99	-99	-99	-99
hnjmp(dB)			-0.15		
vnjmp(dB)			-0.15		



UTC

CIFEX 2004

W2004-04-14-18-51-18 - SPPMAG, IRIG:1/0/2
 UTC: 18:51:18.24 to 19:25:46.17, Dur: 2068s
 TimeLngth: 2067.83s, TimeInt: 35ms (28.2pps)
 TimeCor=-13.0s, PPS(min,max,med): 28,29,28
 Timeint/DSPdiff(mn,min,mx):35,35,35/35,35,35
 Prof: 412 to 58810, NumProf(r/t): 7998/58398
 ProcTime/Recs: 19:21:02-19:25:46/50400-58397
 ADacqtime: 32ms; DRate: 45.6KB/s; Flags: 0, 0, 0
 Pulse: 275ns, IFfilt: 5.0MHz; ppPol: VV
 TxPol: V, PRF: 20 20 20 10 kHz, NoiseFlg:1234
 Range: Delay 75m, Spacing 30m, Gates 100
 Ave. Pulses: 520, Rng/Prof Aspect@90m/s: 9.4

	Min	Max	Mean	Std	Varc%
hhN(dB)	-66.77	-65.56	-66.17	-79.82	4.3
vvN(dB)	-66.85	-64.29	-66.16	-79.39	4.8
vvL(dB)	-0.77	3.86	0.74	-7.28	15.8
hvL(dB)	-8.59	-5.35	-7.32	-17.38	9.9
ppN(m/s)	-15.80	15.80	0.07	8.96	
ppT(m/s)	-0.05	0.01	-0.02	0.01	
hn/vv(dB)	-99	-99	-99	-99	-99
hnjmp(dB)			-0.15		
vnjmp(dB)			-0.15		