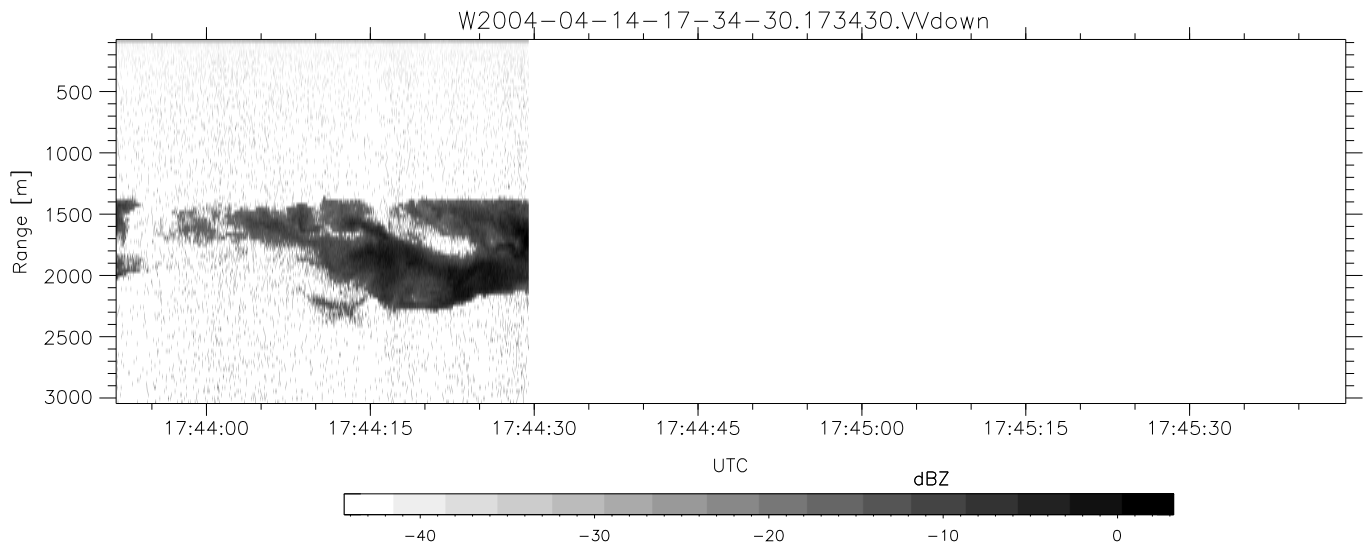
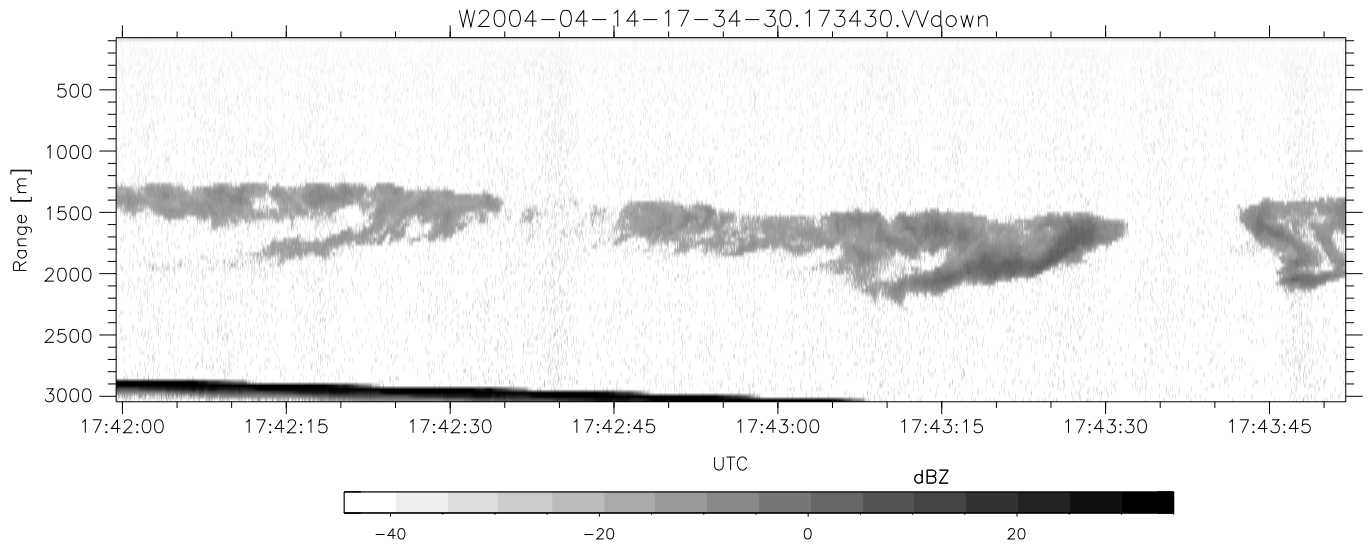
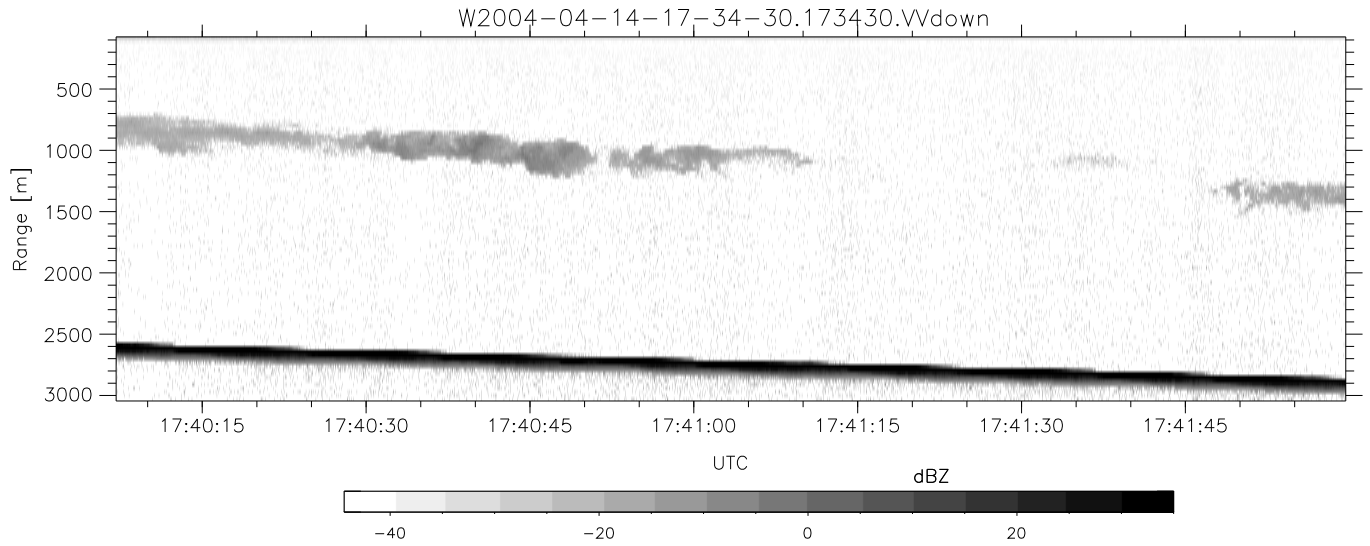


CIFEX 2004 Data (cal/250ns+2.5/100ns-3.5/500ns: 53.0,50.0)

W2004-04-14-17-34-30 - PPMAG4, IRIG:1/0/2
 UTC: 17:34:30.22 to 17:44:29.49, Dur: 599s
 TimeLngth: 599.27s, TimeInt: 28ms (35.4pps)
 TimeCor=-13.0s, PPS(min,max,med): 35,36,35
 Timeint/DSPdiff(mn,min,mx):28,28,28/28,28,28
 Prof: 295 to 21533, NumProf(r/t): 21238/21238
 ADacqtime: 25ms; DRate: 198.4KB/s; Flags: 0, 0, 0
 Pulse: 275ns, IFfilt: 5.0MHz; ppPol: HH HV W
 TxPol: HHVV, PRF: 20 10 20 10 kHz, NoiseFlg:4,1
 Range: Delay 75m, Spacing 30m, Gates 100
 Ave. Pulses: 84, Rng/Prof Aspect@90m/s: 11.8

| | Min | Max | Mean | Std | Varc% |
|------------|--------|--------|--------|--------|-------|
| hhN (dB) | -67.52 | -64.04 | -65.65 | -75.67 | 10.0 |
| vvN (dB) | -67.41 | -63.78 | -65.64 | -75.54 | 10.2 |
| hhL (dB) | -8.04 | 1.86 | -0.59 | -3.88 | 46.8 |
| vvL (dB) | -3.77 | 6.00 | 3.21 | 0.30 | 51.2 |
| ppN (m/s) | -12.88 | 12.54 | -0.02 | 4.18 | |
| ppT (m/s) | -101.7 | 99.09 | -0.16 | 33.02 | |
| hh/vv (dB) | -99 | -99 | -99 | -99 | -99 |
| vh/hh (dB) | -99 | -99 | -99 | -99 | -99 |
| hv/vv (dB) | NaN | -34.90 | -58.55 | -45.95 | 1817 |
| hnjmp (dB) | | | 0.16 | | |
| vnjmp (dB) | | | 0.15 | | |



CIFEX 2004 Data (cal/250ns+2.5/100ns-3.5/500ns: 53.0,50.0)

W2004-04-14-17-34-30 - PPMAG4, IRIG:1/0/2
 UTC: 17:34:30.22 to 17:44:29.49, Dur: 599s
 TimeLngth: 599.27s, TimeInt: 28ms (35.4pps)
 TimeCor=-13.0s, PPS(min,max,med): 35,36,35
 Timeint/DSPdiff(mn,min,mx):28,28,28/28,28,28
 Prof: 295 to 21533, NumProf(r/t): 21238/21238
 ADacqtime: 25ms; DRate: 198.4KB/s; Flags: 0, 0, 0
 Pulse: 275ns, IFfilt: 5.0MHz; ppPol: HH HV VV
 TxPol: HHVV, PRF: 20 10 20 10 kHz, NoiseFlg:4,1
 Range: Delay 75m, Spacing 30m, Gates 100
 Ave. Pulses: 84, Rng/Prof Aspect@90m/s: 11.8

| | Min | Max | Mean | Std | Varc% |
|------------|--------|--------|--------|--------|-------|
| hhN(dB) | -67.52 | -64.04 | -65.65 | -75.67 | 10.0 |
| vvN(dB) | -67.41 | -63.78 | -65.64 | -75.54 | 10.2 |
| hhL(dB) | -8.04 | 1.86 | -0.59 | -3.88 | 46.8 |
| vvL(dB) | -3.77 | 6.00 | 3.21 | 0.30 | 51.2 |
| ppN(m/s) | -12.88 | 12.54 | -0.02 | 4.18 | |
| ppT(m/s) | -101.7 | 99.09 | -0.16 | 33.02 | |
| hh/vv(dB) | -99 | -99 | -99 | -99 | -99 |
| vh/hh(dB) | -99 | -99 | -99 | -99 | -99 |
| hv/vv(dB) | NaN | -34.90 | -58.55 | -45.95 | 1817 |
| hn_jmp(dB) | | | 0.16 | | |
| vn_jmp(dB) | | | 0.15 | | |