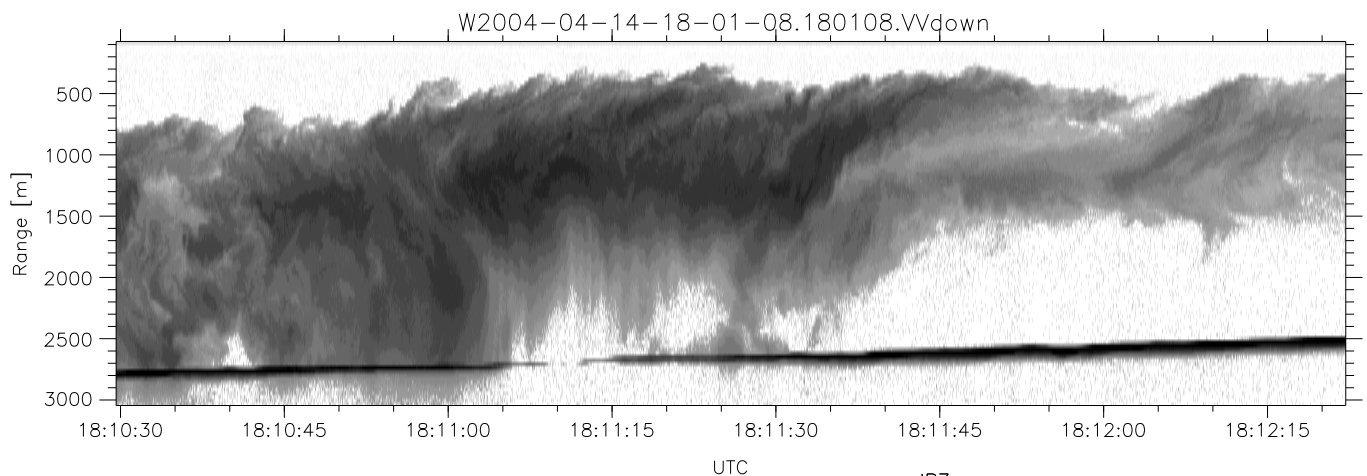
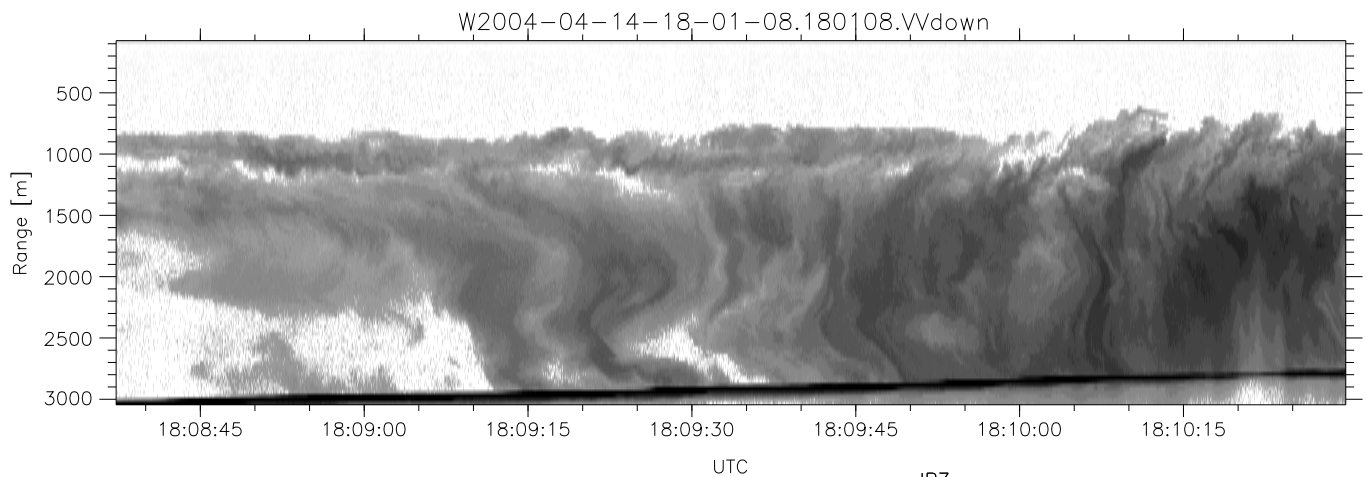
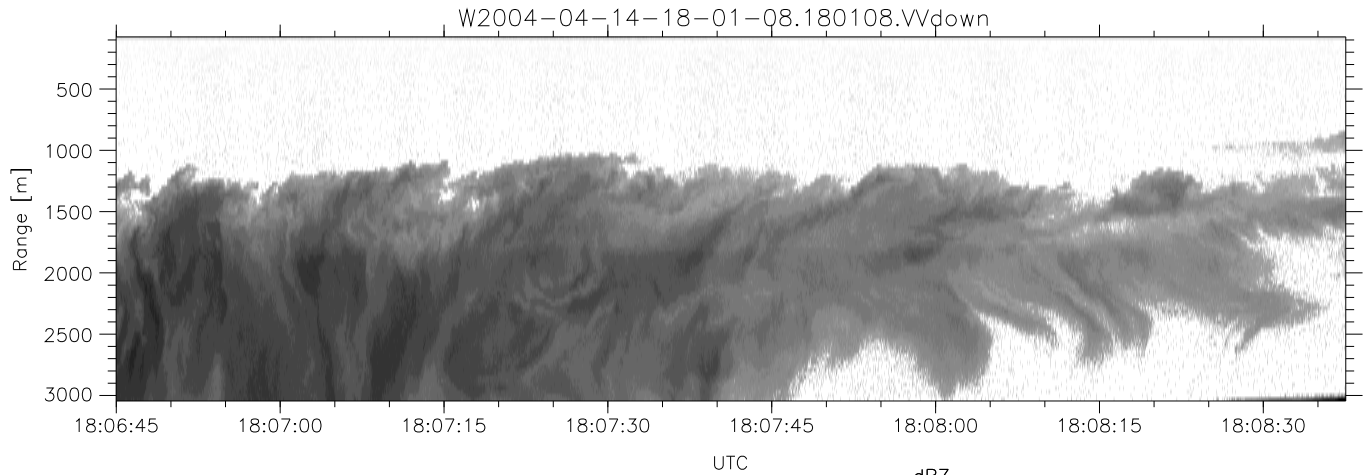


CIFEX 2004 Data (cal/250ns+2.5/100ns-3.5/500ns: 53.0,50.0)

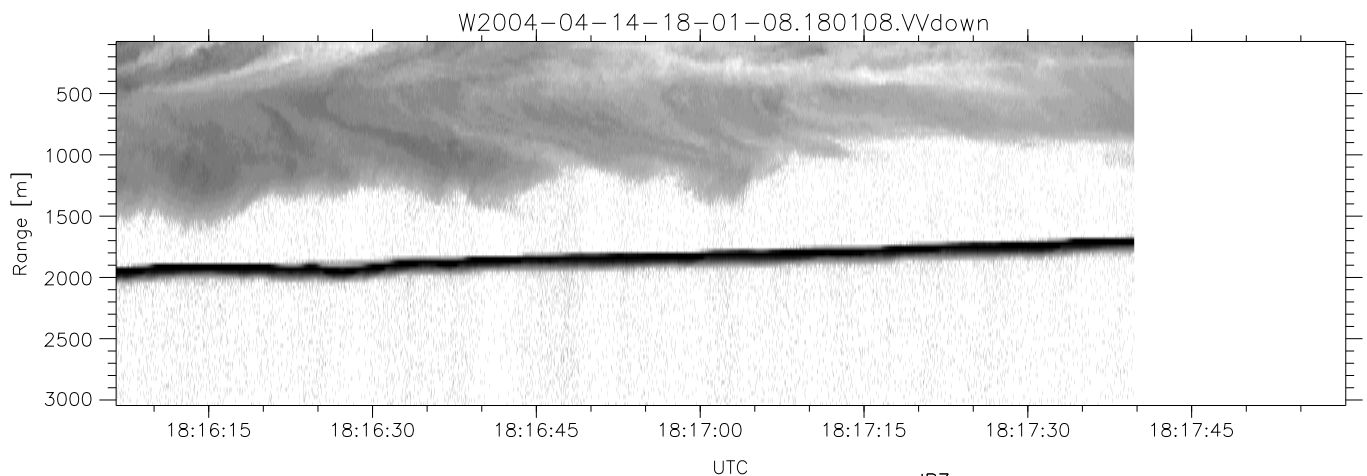
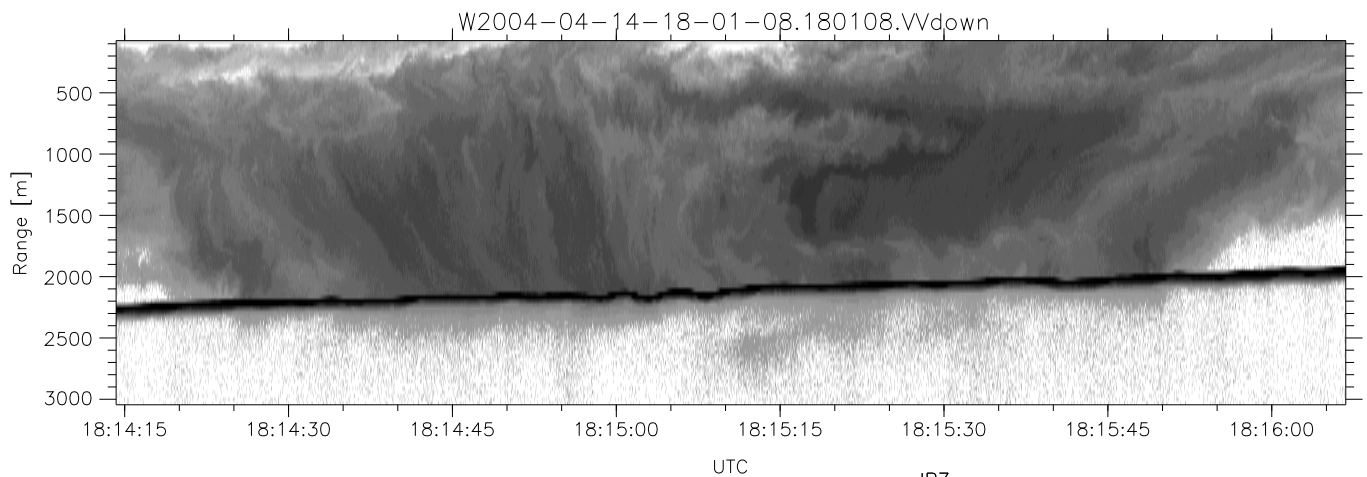
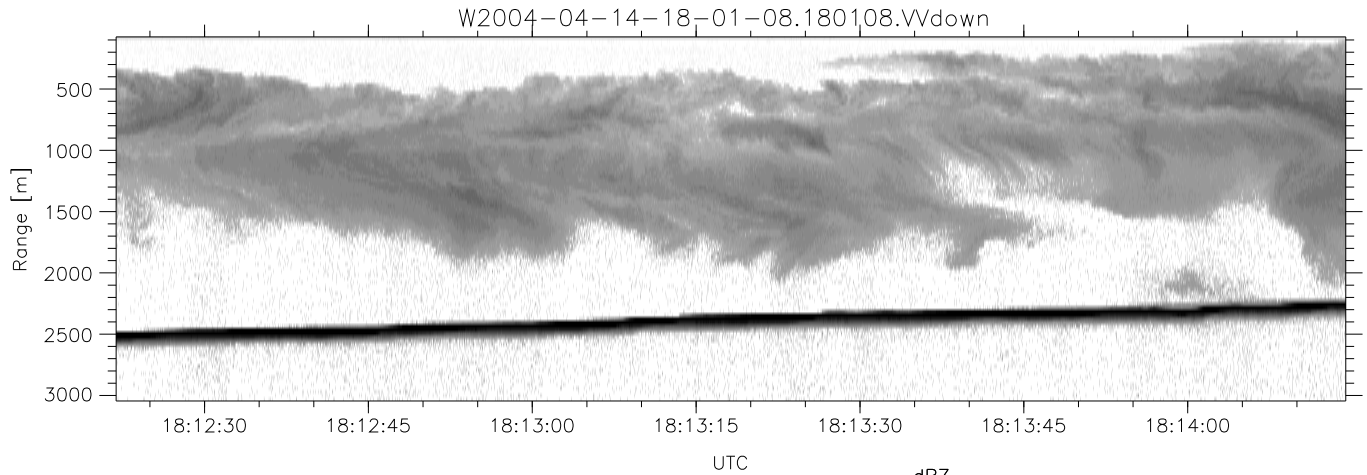
	Min	Max	Mean	Std	Varc%
W2004-04-14-18-01-08 - PPMAG4, IRIG:1/0/2					
UTC: 18:01:08.08 to 18:30:31.79, Dur: 1763s					
TimeLngth: 1763.68s, TimeInt: 28ms (35.4pps)	hhN (dB)	-67.74 -64.25	-65.88	-75.94	9.9
TimeCor=-13.0s, PPS(min,max,med): 34,36,35	vvN (dB)	-67.71 -63.84	-65.80	-75.66	10.3
Timeint/DSPdiff(mn,min,mx):28,28,47/28,28,37	hhL (dB)	-23.83 1.81	-1.53	-4.99	45.1
Prof: 331 to 62834, NumProf(r/t): 35142/62503	vvL (dB)	-18.17 6.00	2.42	-0.23	54.2
ProcTime/Recs: 18:01:08-18:17:39/0-35141	ppN (m/s)	-12.91 12.21	0.01	4.15	
ADacqtime: 25ms; DRate: 198.4KB/s; Flags: 0, 0, 0	ppT (m/s)	-102.0 96.47	0.06	32.79	
Pulse: 275ns, IFilt: 5.0MHz; ppPol: HH HV VV	hh/vv (dB)	-27.67 30.35	5.59	14.08	705.
TxPol: HHVV, PRF: 20 10 20 10 kHz, NoiseFlg:4,2	vh/hh (dB)	-99 -99	-99	-99	-99
Range: Delay 75m, Spacing 30m, Gates 100	hv/vv (dB)	NaN -33.37	-52.48	-42.91	906.
Ave. Pulses: 84, Rng/Prof Aspect@90m/s: 11.8	hnjmp (dB)		0.14		
	vnjmp (dB)		0.14		



CIFEX 2004 Data (cal/250ns+2.5/100ns-3.5/500ns: 53.0,50.0)

W2004-04-14-18-01-08 - PPMAG4, IRIG:1/0/2
 UTC: 18:01:08.08 to 18:30:31.79, Dur: 1763s
 TimeLngth: 1763.68s, TimeInt: 28ms (35.4pps)
 TimeCor=-13.0s, PPS(min,max,med): 34,36,35
 Timeint/DSPdiff(mn,min,mx):28,28,47/28,28,37
 Prof: 331 to 62834, NumProf(r/t): 35142/62503
 ProcTime/Recs: 18:01:08-18:17:39/0-35141
 ADacqtime: 25ms; DRate: 198.4KB/s; Flags: 0, 0, 0
 Pulse: 275ns, IFilt: 5.0MHz; ppPol: HH HV VV
 TxPol: HHVV, PRF: 20 10 20 10 kHz, NoiseFlg:4,2
 Range: Delay 75m, Spacing 30m, Gates 100
 Ave. Pulses: 84, Rng/Prof Aspect@90m/s: 11.8

	Min	Max	Mean	Std	Varc%
hhN(dB)	-67.74	-64.25	-65.88	-75.94	9.9
vvN(dB)	-67.71	-63.84	-65.80	-75.66	10.3
hhL(dB)	-23.83	1.81	-1.53	-4.99	45.1
vvL(dB)	-18.17	6.00	2.42	-0.23	54.2
ppN(m/s)	-12.91	12.21	0.01	4.15	
ppT(m/s)	-102.0	96.47	0.06	32.79	
hh/vv(dB)	-27.67	30.35	5.59	14.08	705.
vh/hh(dB)	-99	-99	-99	-99	-99
hv/vv(dB)	NaN	-33.37	-52.48	-42.91	906.
hnjmp(dB)			0.14		
vnjmp(dB)			0.14		



CIFEX 2004 Data (cal/250ns+2.5/100ns-3.5/500ns: 53.0,50.0)

W2004-04-14-18-01-08 - PPMAG4, IRIG:1/0/2
 UTC: 18:01:08.08 to 18:30:31.79, Dur: 1763s
 TimeLngth: 1763.68s, TimeInt: 28ms (35.4pps)
 TimeCor=-13.0s, PPS(min,max,med): 34,36,35
 Timeint/DSPdiff(mn,min,mx):28,28,47/28,28,37
 Prof: 331 to 62834, NumProf(r/t): 35142/62503
 ProcTime/Recs: 18:01:08-18:17:39/0-35141
 ADacqtime: 25ms; DRate: 198.4KB/s; Flags: 0, 0, 0
 Pulse: 275ns, IFfilt: 5.0MHz; ppPol: HH HV VV
 TxPol: HHVV, PRF: 20 10 20 10 kHz, NoiseFlg:4,2
 Range: Delay 75m, Spacing 30m, Gates 100
 Ave. Pulses: 84, Rng/Prof Aspect@90m/s: 11.8

	Min	Max	Mean	Std	Varc%
hhN (dB)	-67.74	-64.25	-65.88	-75.94	9.9
vvN (dB)	-67.71	-63.84	-65.80	-75.66	10.3
hhL (dB)	-23.83	1.81	-1.53	-4.99	45.1
vvL (dB)	-18.17	6.00	2.42	-0.23	54.2
ppN (m/s)	-12.91	12.21	0.01	4.15	
ppT (m/s)	-102.0	96.47	0.06	32.79	
hh/vv (dB)	-27.67	30.35	5.59	14.08	705.
vh/hh (dB)	-99	-99	-99	-99	-99
hv/vv (dB)	NaN	-33.37	-52.48	-42.91	906.
hnjmp (dB)			0.14		
vnjmp (dB)			0.14		