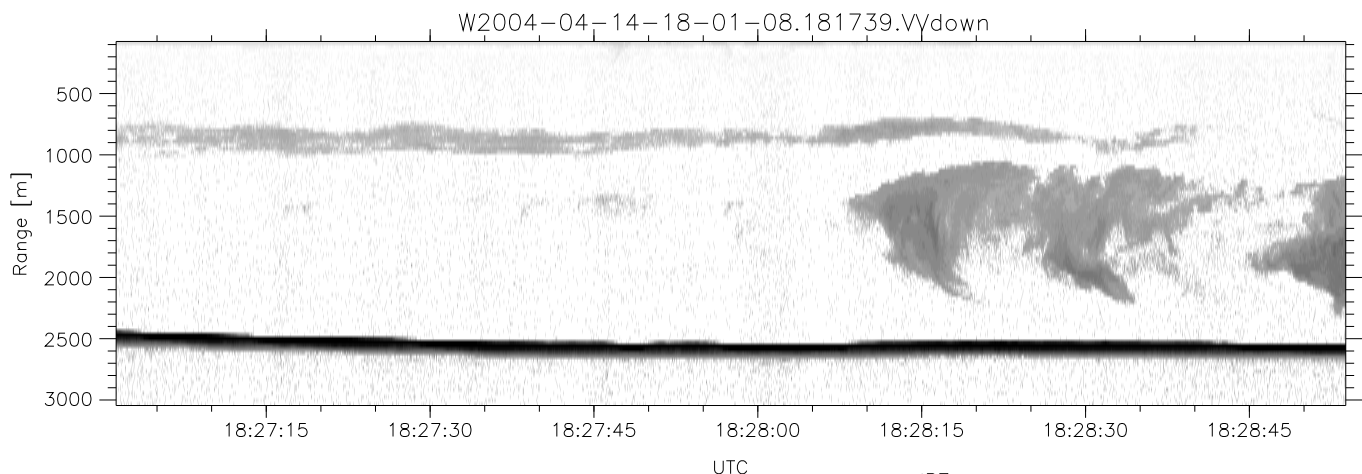
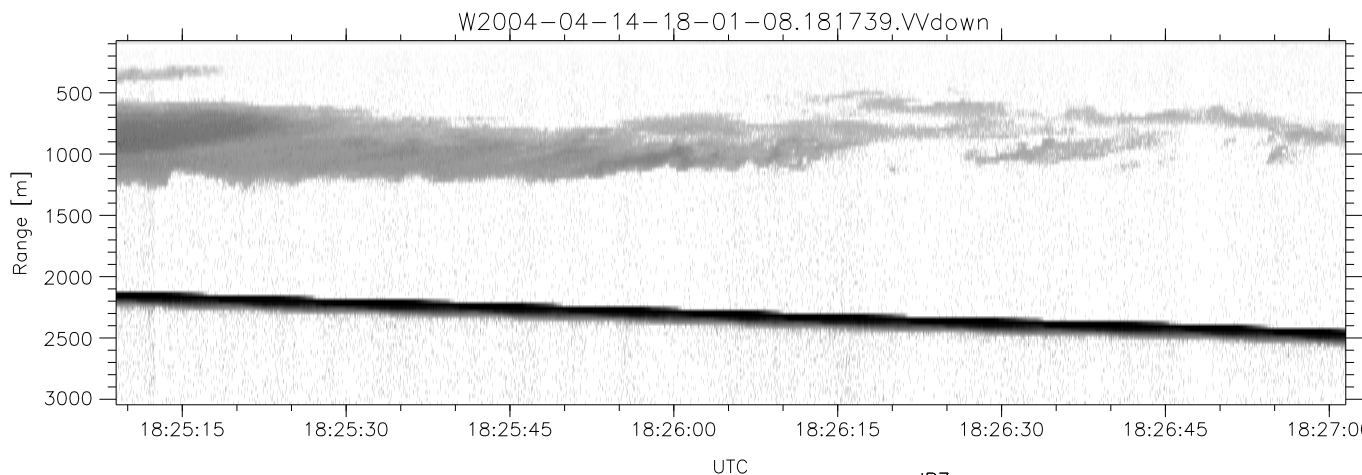
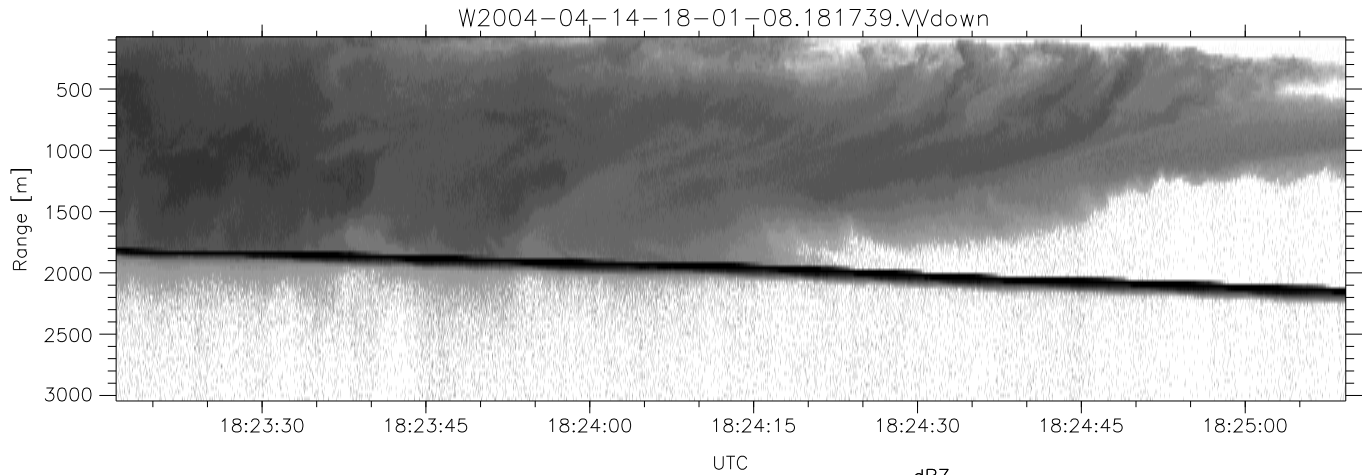


CIFEX 2004 Data (cal/250ns+2.5/100ns-3.5/500ns: 53.0,50.0)

W2004-04-14-18-01-08 - PPMAG4, IRIG:1/0/2  
 UTC: 18:01:08.08 to 18:30:31.79, Dur: 1763s  
 TimeLngth: 1763.68s, TimeInt: 28ms (35.4pps)  
 TimeCor=-13.0s, PPS(min,max,med): 35,36,35  
 Timeint/DSPdiff(mn,min,mx):28,28,28/28,28,28  
 Prof: 331 to 62834, NumProf(r/t): 27361/62503  
 ProcTime/Recs: 18:17:39-18:30:31/35142-62502  
 ADacqtime: 25ms; DRate: 198.4KB/s; Flags: 0, 0, 0  
 Pulse: 275ns, IFfilt: 5.0MHz; ppPol: HH HV VV  
 TxPol: HHVV, PRF: 20 10 20 10 kHz, Noiseflg:2,2  
 Range: Delay 75m, Spacing 30m, Gates 100  
 Ave. Pulses: 84, Rng/Prof Aspect@90m/s: 11.8

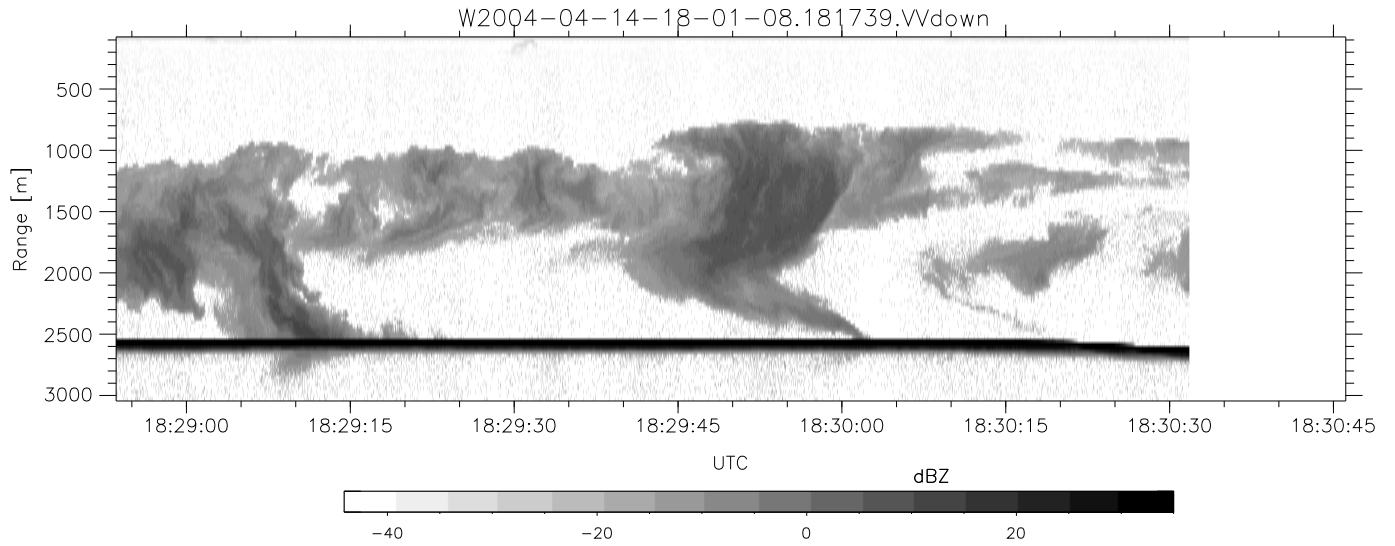
	Min	Max	Mean	Std	Varc%
hhN(dB)	-67.84	-64.36	-65.92	-75.98	9.9
vvN(dB)	-67.82	-64.25	-65.89	-75.78	10.3
hhL(dB)	-21.81	2.21	-1.57	-3.28	67.5
vvL(dB)	-16.22	6.00	4.35	1.63	53.4
ppN(m/s)	-12.74	12.75	-0.03	4.16	
ppT(m/s)	-100.6	100.73	-0.23	32.89	
hh/vv(dB)	NaN	25.60	-7.04	7.08	2580
vh/hh(dB)	NaN	-22.18	-33.24	-33.29	98.9
hv/vv(dB)	NaN	-33.38	-48.97	-43.51	351.
hnjmp(dB)			0.14		
vnjmp(dB)			0.14		



CIFEX 2004 Data (cal/250ns+2.5/100ns-3.5/500ns: 53.0,50.0)

W2004-04-14-18-01-08 - PPMAG4, IRIG:1/0/2  
 UTC: 18:01:08.08 to 18:30:31.79, Dur: 1763s  
 TimeLngth: 1763.68s, TimeInt: 28ms (35.4pps)  
 TimeCor=-13.0s, PPS(min,max,med): 35,36,35  
 Timeint/DSPdiff(mn,min,mx):28,28,28/28,28,28  
 Prof: 331 to 62834, NumProf(r/t): 27361/62503  
 ProcTime/Recs: 18:17:39-18:30:31/35142-62502  
 ADacqtime: 25ms; DRate: 198.4KB/s; Flags: 0, 0, 0  
 Pulse: 275ns, IFilt: 5.0MHz; ppPol: HH HV VV  
 TxPol: HHVV, PRF: 20 10 20 10 kHz, NoiseFlg:2,2  
 Range: Delay 75m, Spacing 30m, Gates 100  
 Ave. Pulses: 84, Rng/Prof Aspect@90m/s: 11.8

	Min	Max	Mean	Std	Varc%
hhN (dB)	-67.84	-64.36	-65.92	-75.98	9.9
vvN (dB)	-67.82	-64.25	-65.89	-75.78	10.3
hhL (dB)	-21.81	2.21	-1.57	-3.28	67.5
vvL (dB)	-16.22	6.00	4.35	1.63	53.4
ppN (m/s)	-12.74	12.75	-0.03	4.16	
ppT (m/s)	-100.6	100.73	-0.23	32.89	
hh/vv (dB)	NaN	25.60	-7.04	7.08	2580
vh/hh (dB)	NaN	-22.18	-33.24	-33.29	98.9
hv/vv (dB)	NaN	-33.38	-48.97	-43.51	351.
hnj (dB)			0.14		
vnj (dB)			0.14		



CIFEX 2004 Data (cal/250ns+2.5/100ns-3.5/500ns: 53.0,50.0)

W2004-04-14-18-01-08 - PPMAG4, IRIG:1/0/2  
 UTC: 18:01:08.08 to 18:30:31.79, Dur: 1763s  
 TimeLngth: 1763.68s, TimeInt: 28ms (35.4pps)  
 TimeCor=-13.0s, PPS(min,max,med): 35,36,35  
 Timeint/DSPdiff(mn,min,mx):28,28,28/28,28,28  
 Prof: 331 to 62834, NumProf(r/t): 27361/62503  
 ProcTime/Recs: 18:17:39-18:30:31/35142-62502  
 ADacqtime: 25ms; DRate: 198.4KB/s; Flags: 0, 0, 0  
 Pulse: 275ns, IFfilt: 5.0MHz; ppPol: HH HV VV  
 TxPol: HHVV, PRF: 20 10 20 10 kHz, Noiseflg:2,2  
 Range: Delay 75m, Spacing 30m, Gates 100  
 Ave. Pulses: 84, Rng/Prof Aspect@90m/s: 11.8

	Min	Max	Mean	Std	Varc%
hhN (dB)	-67.84	-64.36	-65.92	-75.98	9.9
vvN (dB)	-67.82	-64.25	-65.89	-75.78	10.3
hhL (dB)	-21.81	2.21	-1.57	-3.28	67.5
vvL (dB)	-16.22	6.00	4.35	1.63	53.4
ppN (m/s)	-12.74	12.75	-0.03	4.16	
ppT (m/s)	-100.6	100.73	-0.23	32.89	
hh/vv (dB)	NaN	25.60	-7.04	7.08	2580
vh/hh (dB)	NaN	-22.18	-33.24	-33.29	98.9
hv/vv (dB)	NaN	-33.38	-48.97	-43.51	351.
hnjmp (dB)			0.14		
vnjmp (dB)			0.14		