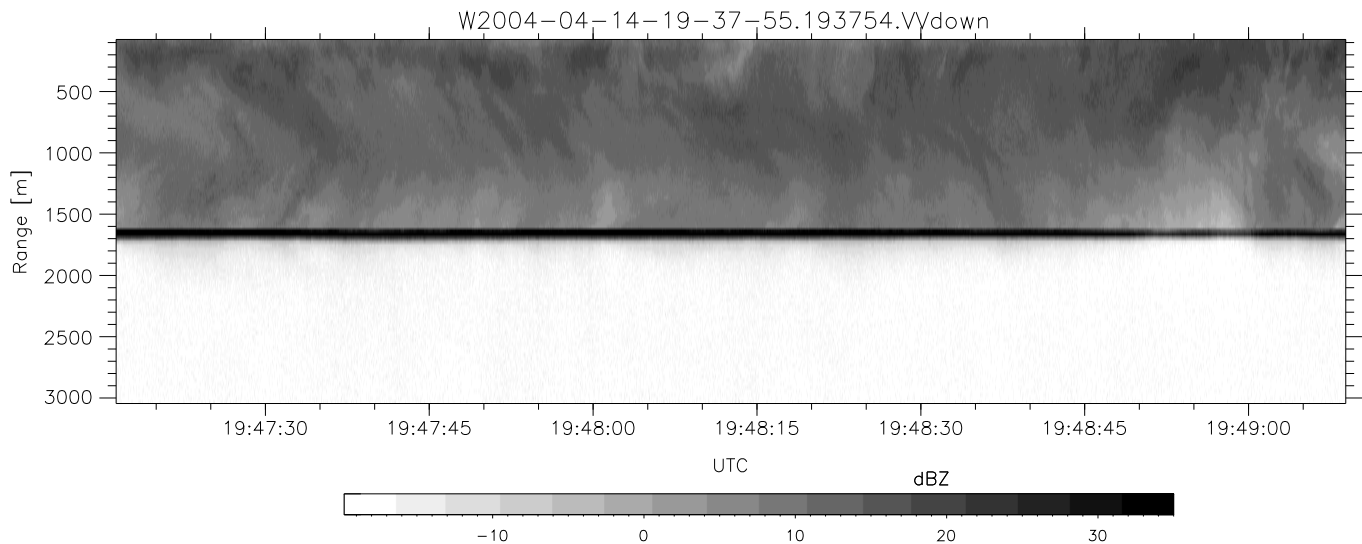
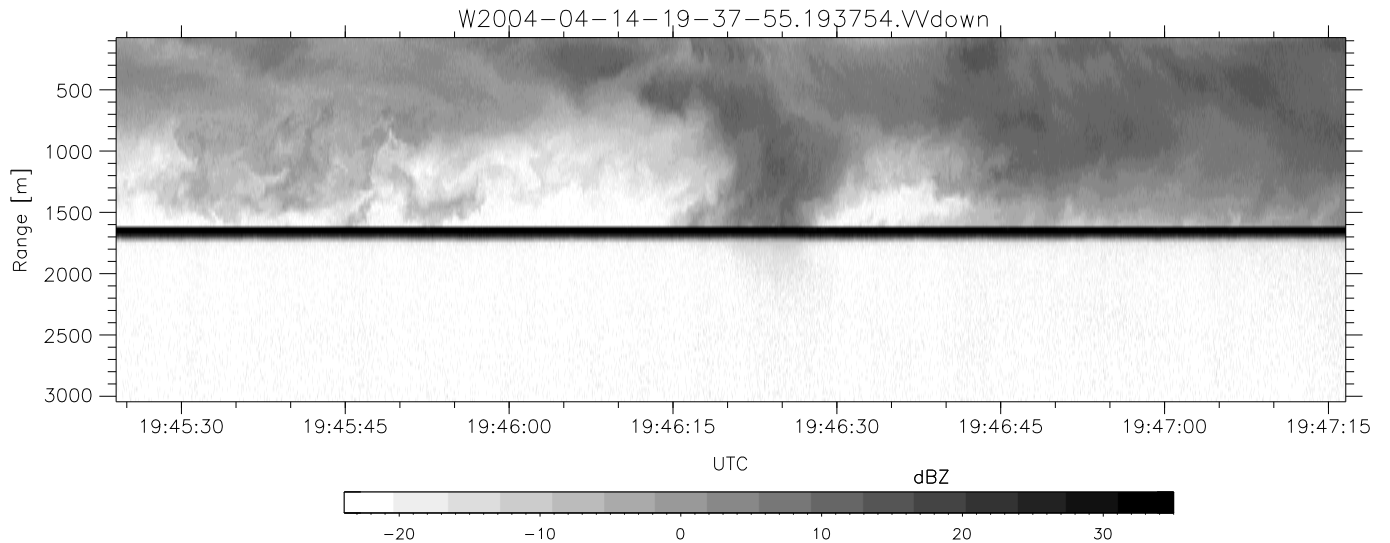
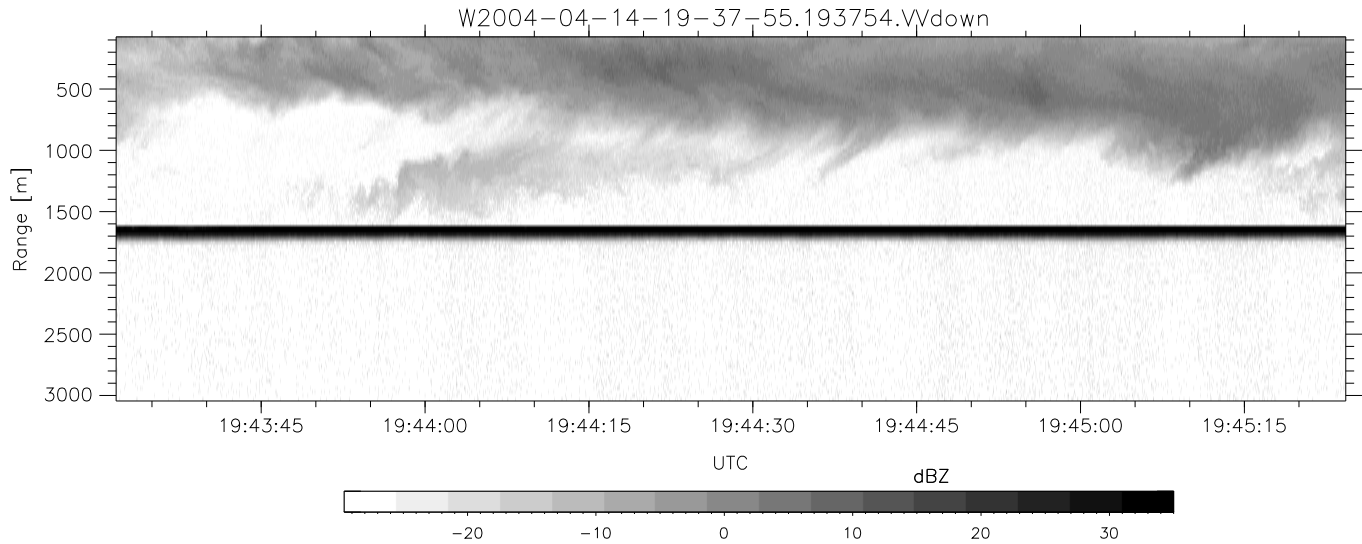


CIFEX 2004 Data (cal/250ns+2.5/100ns-3.5/500ns: 53.0,50.0)

W2004-04-14-19-37-55 - PPMAG4, IRIG:1/0/2  
 UTC: 19:37:54.82 to 20:00:22.60, Dur: 1348s  
 TimeLngth: 1347.78s, TimeInt: 28ms (35.4pps)  
 TimeCor=-13.0s, PPS(min,max,med): 35,36,35  
 Timeint/DSPdiff(mn,min,mx):28,28,28/28,28,28  
 Prof: 377 to 48141, NumProf(r/t): 35142/47764  
 ProcTime/Recs: 19:37:54-19:54:26/0-35141  
 ADacqtime: 25ms; DRate: 198.4KB/s; Flags: 0, 0, 0  
 Pulse: 275ns, IFfilt: 5.0MHz; ppPol: HH HV VV  
 TxPol: HHVV, PRF: 20 10 20 10 kHz, Noiseflg:4,2  
 Range: Delay 75m, Spacing 30m, Gates 100  
 Ave. Pulses: 84, Rng/Prof Aspect@90m/s: 11.8

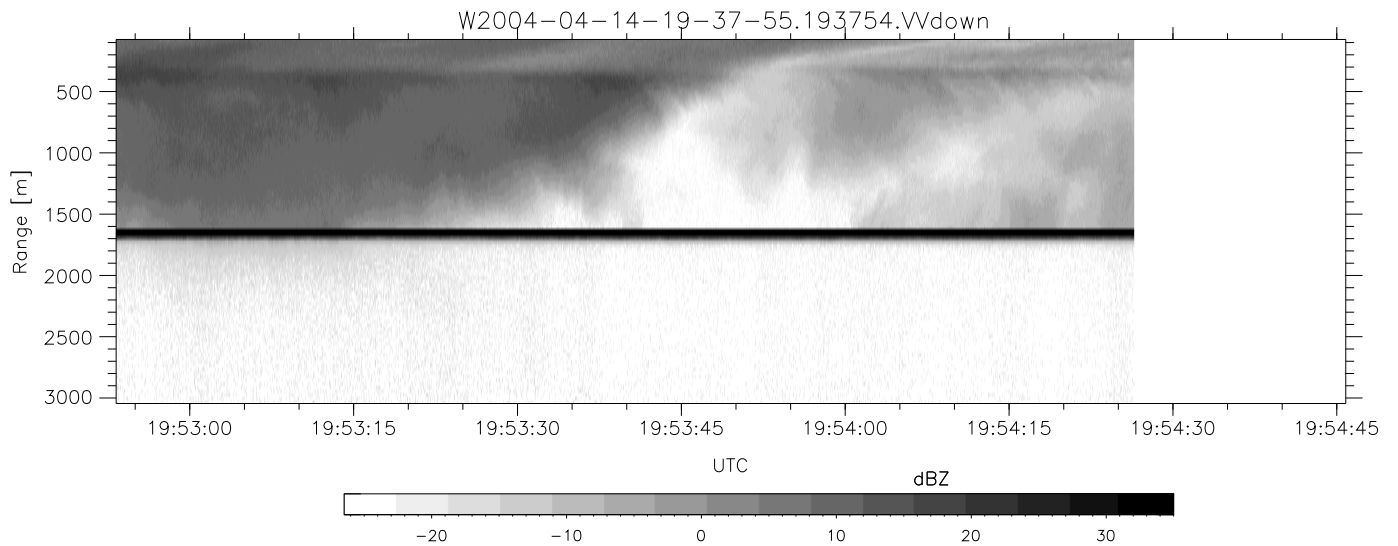
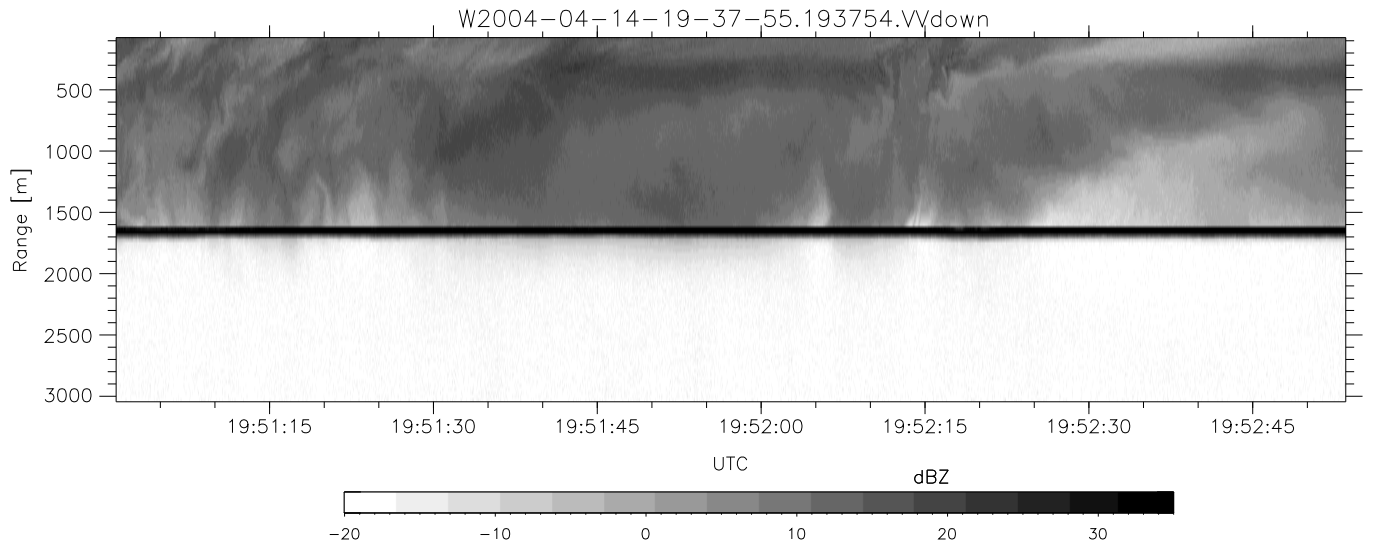
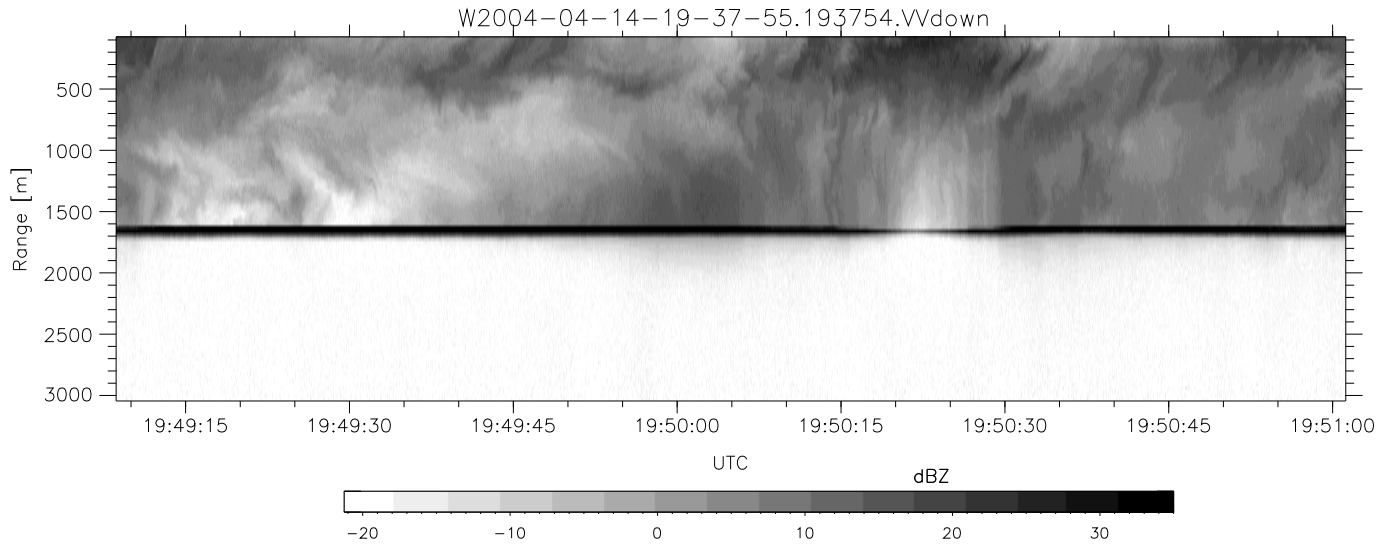
	Min	Max	Mean	Std	Varc%
hhN (dB)	-68.30	-64.52	-66.23	-76.27	9.9
vvN (dB)	-68.42	-64.53	-66.19	-76.07	10.3
hhL (dB)	-15.97	-7.06	-11.79	-16.67	32.5
vvL (dB)	-12.50	3.40	-7.48	-12.82	29.2
ppN (m/s)	-12.50	12.44	-0.01	4.13	
ppT (m/s)	-98.78	98.28	-0.11	32.65	
hh/vv (dB)	NaN	43.85	0.98	21.43	1107
vh/hh (dB)	NaN	-21.00	-36.69	-35.22	140.
hv/vv (dB)	NaN	-33.60	-49.84	-44.04	381.
hn_jmp (dB)			0.15		
vn_jmp (dB)			0.15		



CIFEX 2004 Data (cal/250ns+2.5/100ns-3.5/500ns: 53.0,50.0)

W2004-04-14-19-37-55 - PPMAG4, IRIG:1/0/2  
 UTC: 19:37:54.82 to 20:00:22.60, Dur: 1348s  
 TimeLngth: 1347.78s, TimeInt: 28ms (35.4pps)  
 TimeCor=-13.0s, PPS(min,max,med): 35,36,35  
 Timeint/DSPdiff(mn,min,mx):28,28,28/28,28,28  
 Prof: 377 to 48141, NumProf(r/t): 35142/47764  
 ProcTime/Recs: 19:37:54-19:54:26/0-35141  
 ADacqtime: 25ms; DRate: 198.4KB/s; Flags: 0, 0, 0  
 Pulse: 275ns, IFfilt: 5.0MHz; ppPol: HH HV VV  
 TxPol: HHVV, PRF: 20 10 20 10 kHz, Noiseflg:4,2  
 Range: Delay 75m, Spacing 30m, Gates 100  
 Ave. Pulses: 84, Rng/Prof Aspect@90m/s: 11.8

	Min	Max	Mean	Std	Varc%
hhN(dB)	-68.30	-64.52	-66.23	-76.27	9.9
vvN(dB)	-68.42	-64.53	-66.19	-76.07	10.3
hhL(dB)	-15.97	-7.06	-11.79	-16.67	32.5
vvL(dB)	-12.50	3.40	-7.48	-12.82	29.2
ppN(m/s)	-12.50	12.44	-0.01	4.13	
ppT(m/s)	-98.78	98.28	-0.11	32.65	
hh/vv(dB)	NaN	43.85	0.98	21.43	1107
vh/hh(dB)	NaN	-21.00	-36.69	-35.22	140.
hv/vv(dB)	NaN	-33.60	-49.84	-44.04	381.
hnjmp(dB)			0.15		
vnjmp(dB)			0.15		



CIFEX 2004 Data (cal/250ns+2.5/100ns-3.5/500ns: 53.0,50.0)

W2004-04-14-19-37-55 - PPMAG4, IRIG:1/0/2  
 UTC: 19:37:54.82 to 20:00:22.60, Dur: 1348s  
 TimeLngth: 1347.78s, TimeInt: 28ms (35.4pps)  
 TimeCor=-13.0s, PPS(min,max,med): 35,36,35  
 Timeint/DSPdiff(mn,min,mx):28,28,28/28,28,28  
 Prof: 377 to 48141, NumProf(r/t): 35142/47764  
 ProcTime/Recs: 19:37:54-19:54:26/0-35141  
 ADacqtime: 25ms; DRate: 198.4KB/s; Flags: 0, 0, 0  
 Pulse: 275ns, IFfilt: 5.0MHz; ppPol: HH HV VV  
 TxPol: HHVV, PRF: 20 10 20 10 kHz, Noiseflg:4,2  
 Range: Delay 75m, Spacing 30m, Gates 100  
 Ave. Pulses: 84, Rng/Prof Aspect@90m/s: 11.8

	Min	Max	Mean	Std	Varc%
hhN (dB)	-68.30	-64.52	-66.23	-76.27	9.9
vvN (dB)	-68.42	-64.53	-66.19	-76.07	10.3
hhL (dB)	-15.97	-7.06	-11.79	-16.67	32.5
vvL (dB)	-12.50	3.40	-7.48	-12.82	29.2
ppN (m/s)	-12.50	12.44	-0.01	4.13	
ppT (m/s)	-98.78	98.28	-0.11	32.65	
hh/vv (dB)	NaN	43.85	0.98	21.43	1107
vh/hh (dB)	NaN	-21.00	-36.69	-35.22	140.
hv/vv (dB)	NaN	-33.60	-49.84	-44.04	381.
hnjmp (dB)				0.15	
vnjmp (dB)				0.15	