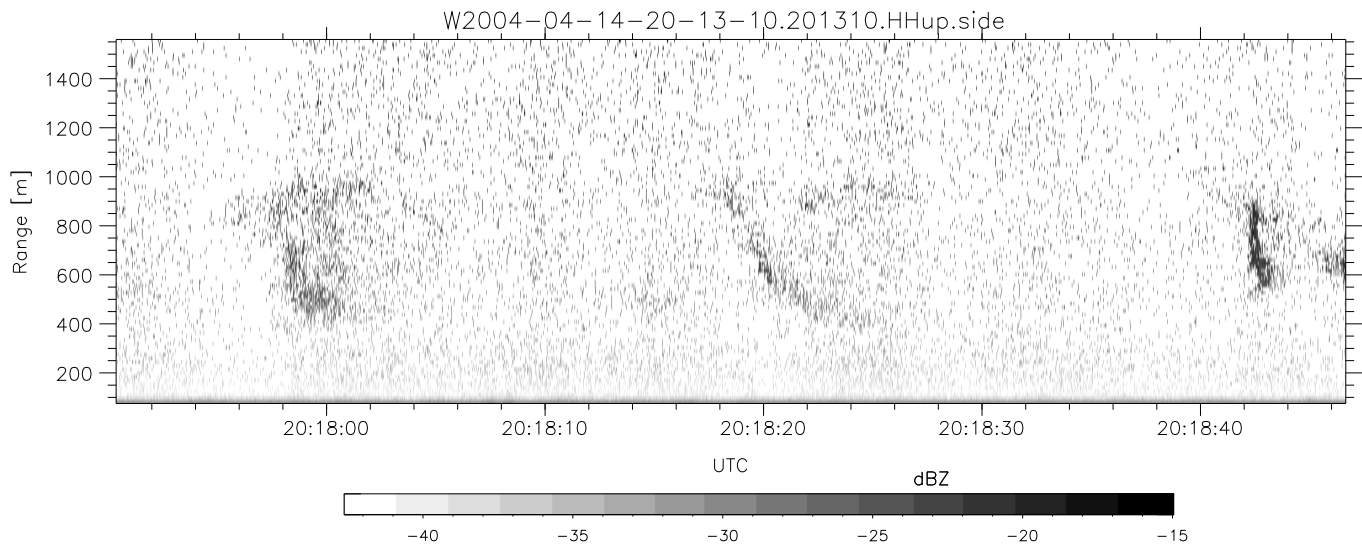
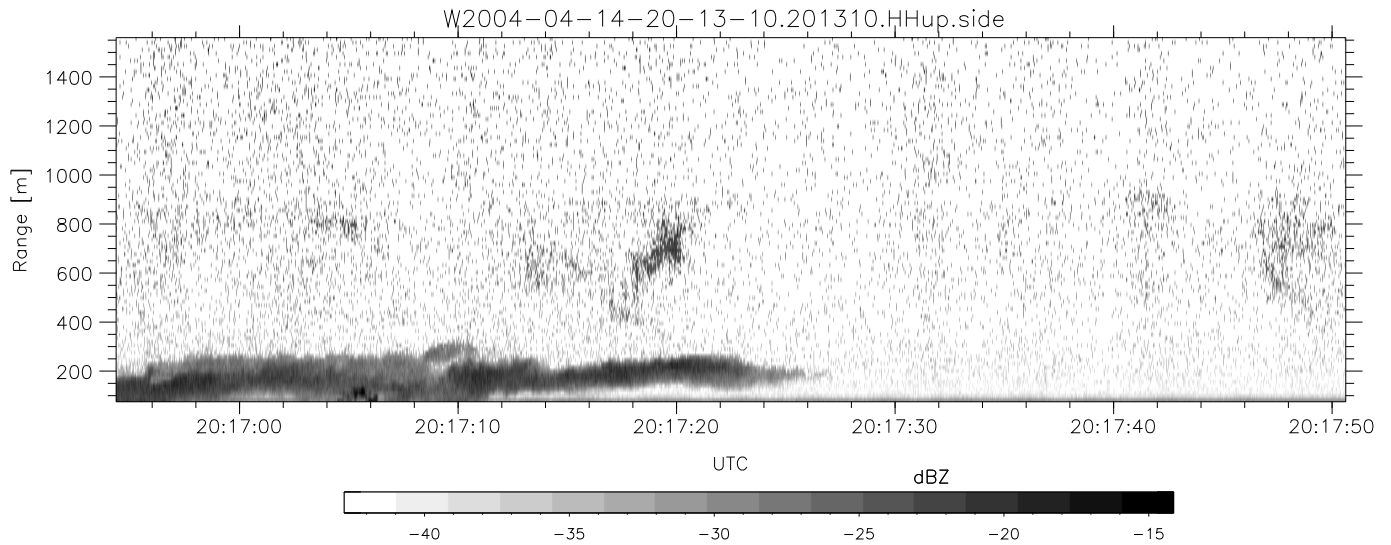
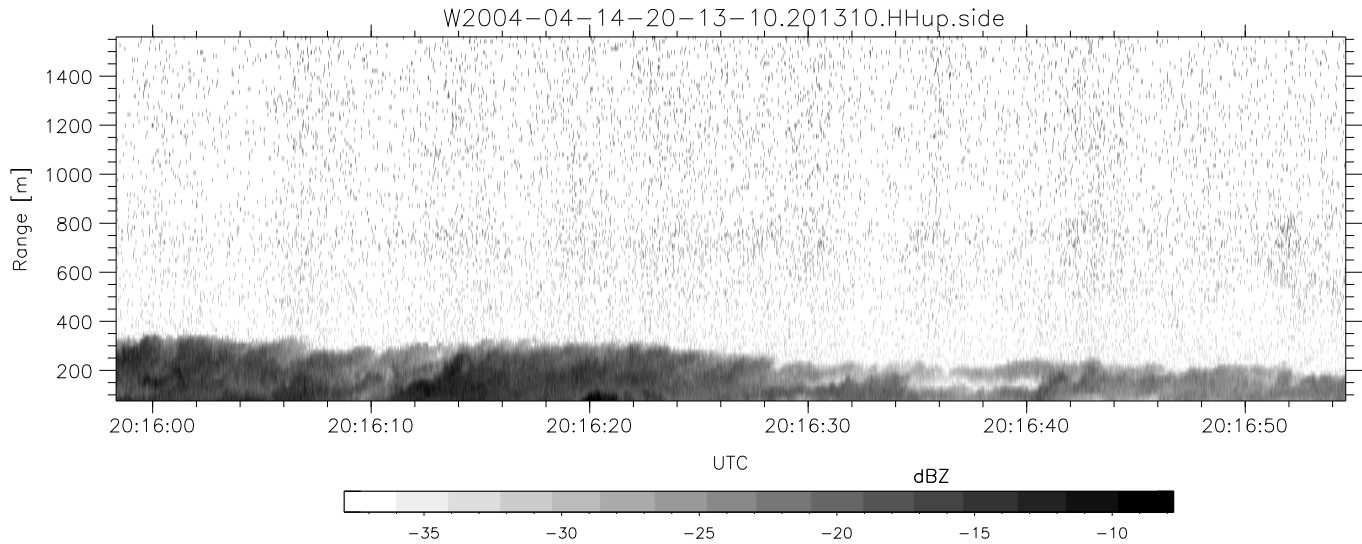


CIFEX 2004 Data (cal/250ns+2.5/100ns-3.5/500ns: 53.0,50.0)

W2004-04-14-20-13-10 - PPMAG4, IRIG:1/0/2  
 UTC: 20:13:10.29 to 20:23:58.86, Dur: 648s  
 TimeLngth: 648.58s, TimeInt: 28ms (35.4pps)  
 TimeCor=-13.0s, PPS(min,max,med): 35,36,35  
 Timeint/DSPdiff(mn,min,mx):28,28,28/28,28,28  
 Prof: 337 to 23330, NumProf(r/t): 17571/22993  
 ProcTime/Recs: 20:13:10-20:21:25/0-17570  
 ADacqtime: 25ms; DRate: 198.4KB/s; Flags: 0, 0, 0  
 Pulse: 275ns, IFfilt: 5.0MHz; ppPol: HH HV VV  
 TxPol: HHVV, PRF: 20 10 20 10 kHz, NoiseFlg:4,2  
 Range: Delay 75m, Spacing 15m, Gates 100  
 Ave. Pulses: 84, Rng/Prof Aspect@90m/s: 5.9

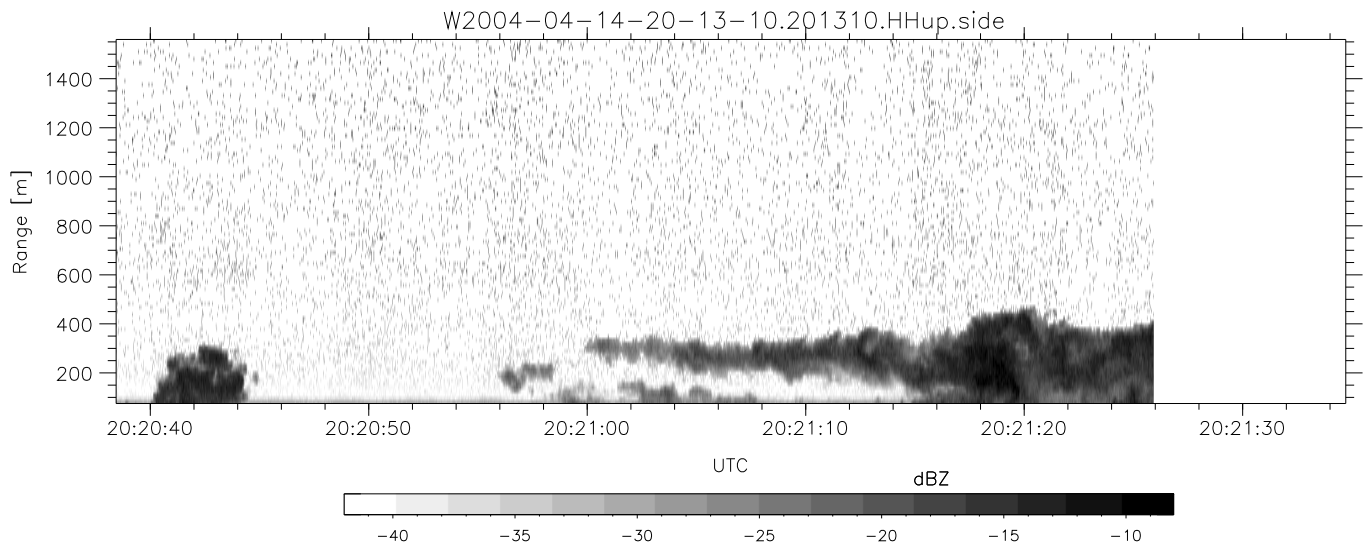
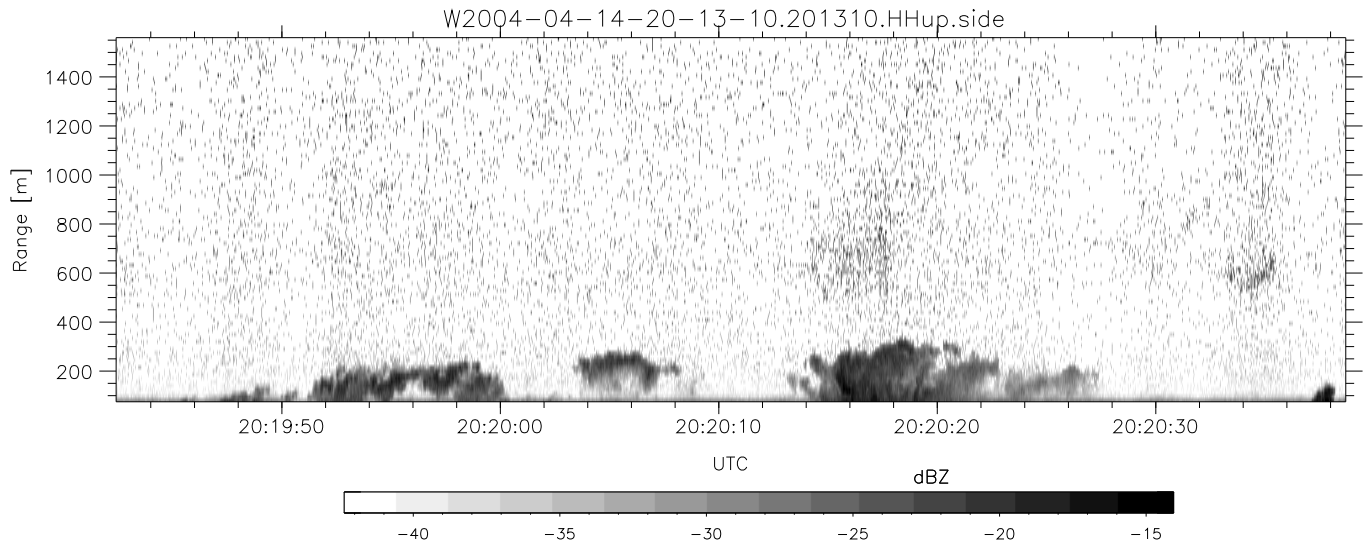
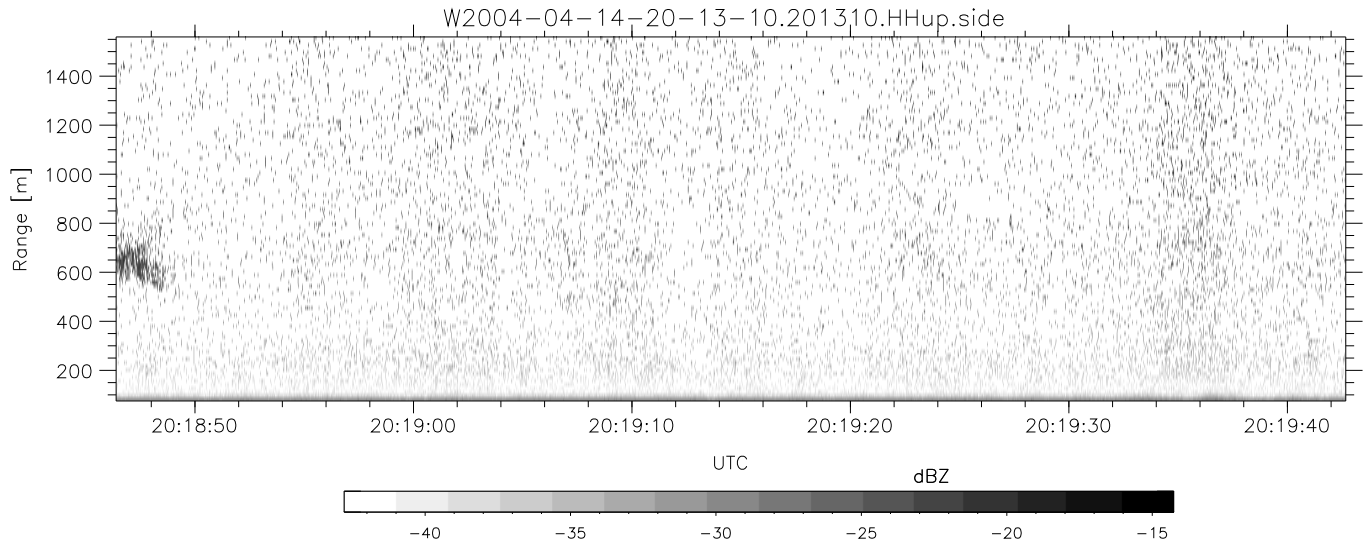
	Min	Max	Mean	Std	Varc%
hhN(dB)	-68.19	-64.80	-66.42	-76.44	9.9
vvN(dB)	-68.16	-64.82	-66.47	-76.35	10.3
hhL(dB)	-22.20	1.52	-4.60	-6.12	70.5
vvL(dB)	-17.52	2.96	-10.47	-9.63	121.
ppN(m/s)	-12.34	12.85	0.06	4.14	
ppT(m/s)	-97.52	101.53	0.46	32.74	
hh/vv(dB)	NaN	38.16	5.99	19.66	2330
vh/hh(dB)	NaN	-27.83	-32.33	-34.67	58.3
hv/vv(dB)	NaN	-34.13	-45.24	-42.33	195.
hnjmp(dB)			0.15		
vnjmp(dB)			0.13		



CIFEX 2004 Data (cal/250ns+2.5/100ns-3.5/500ns: 53.0,50.0)

W2004-04-14-20-13-10 - PPMAG4, IRIG:1/0/2  
 UTC: 20:13:10.29 to 20:23:58.86, Dur: 648s  
 TimeLngth: 648.58s, TimeInt: 28ms (35.4pps)  
 TimeCor=-13.0s, PPS(min,max,med): 35,36,35  
 Timeint/DSPdiff(mn,min,mx):28,28,28/28,28,28  
 Prof: 337 to 23330, NumProf(r/t): 17571/22993  
 ProcTime/Recs: 20:13:10-20:21:25/0-17570  
 ADacqtime: 25ms; DRate: 198.4KB/s; Flags: 0, 0, 0  
 Pulse: 275ns, IFfilt: 5.0MHz; ppPol: HH HV VV  
 TxPol: HHVV, PRF: 20 10 20 10 kHz, NoiseFlg:4,2  
 Range: Delay 75m, Spacing 15m, Gates 100  
 Ave. Pulses: 84, Rng/Prof Aspect@90m/s: 5.9

	Min	Max	Mean	Std	Varc%
hhN (dB)	-68.19	-64.80	-66.42	-76.44	9.9
vvN (dB)	-68.16	-64.82	-66.47	-76.35	10.3
hhL (dB)	-22.20	1.52	-4.60	-6.12	70.5
vvL (dB)	-17.52	2.96	-10.47	-9.63	121.
ppN (m/s)	-12.34	12.85	0.06	4.14	
ppT (m/s)	-97.52	101.53	0.46	32.74	
hh/vv (dB)	NaN	38.16	5.99	19.66	2330
vh/hh (dB)	NaN	-27.83	-32.33	-34.67	58.3
hv/vv (dB)	NaN	-34.13	-45.24	-42.33	195.
hnjmp (dB)			0.15		
vnjmp (dB)			0.13		



CIFEX 2004 Data (cal/250ns+2.5/100ns-3.5/500ns: 53.0,50.0)

W2004-04-14-20-13-10 - PPMAG4, IRIG:1/0/2  
 UTC: 20:13:10.29 to 20:23:58.86, Dur: 648s  
 TimeLngth: 648.58s, TimeInt: 28ms (35.4pps)  
 TimeCor=-13.0s, PPS(min,max,med): 35,36,35  
 Timeint/DSPdiff(mn,min,mx):28,28,28/28,28,28  
 Prof: 337 to 23330, NumProf(r/t): 17571/22993  
 ProcTime/Recs: 20:13:10-20:21:25/0-17570  
 ADacqtime: 25ms; DRate: 198.4KB/s; Flags: 0, 0, 0  
 Pulse: 275ns, IFfilt: 5.0MHz; ppPol: HH HV VV  
 TxPol: HHVV, PRF: 20 10 20 10 kHz, Noiseflg:4,2  
 Range: Delay 75m, Spacing 15m, Gates 100  
 Ave. Pulses: 84, Rng/Prof Aspect@90m/s: 5.9

	Min	Max	Mean	Std	Varc%
hhN(dB)	-68.19	-64.80	-66.42	-76.44	9.9
vvN(dB)	-68.16	-64.82	-66.47	-76.35	10.3
hhL(dB)	-22.20	1.52	-4.60	-6.12	70.5
vvL(dB)	-17.52	2.96	-10.47	-9.63	121.
ppN(m/s)	-12.34	12.85	0.06	4.14	
ppT(m/s)	-97.52	101.53	0.46	32.74	
hh/vv(dB)	NaN	38.16	5.99	19.66	2330
vh/hh(dB)	NaN	-27.83	-32.33	-34.67	58.3
hv/vv(dB)	NaN	-34.13	-45.24	-42.33	195.
hnjmp(dB)				0.15	
vnjmp(dB)				0.13	