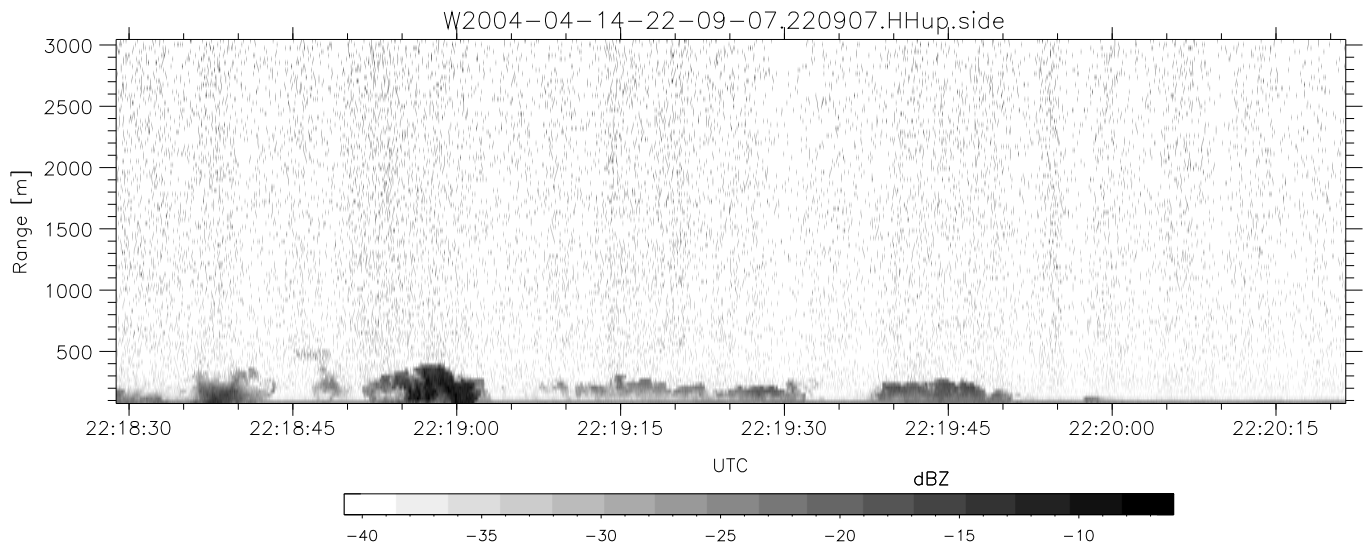
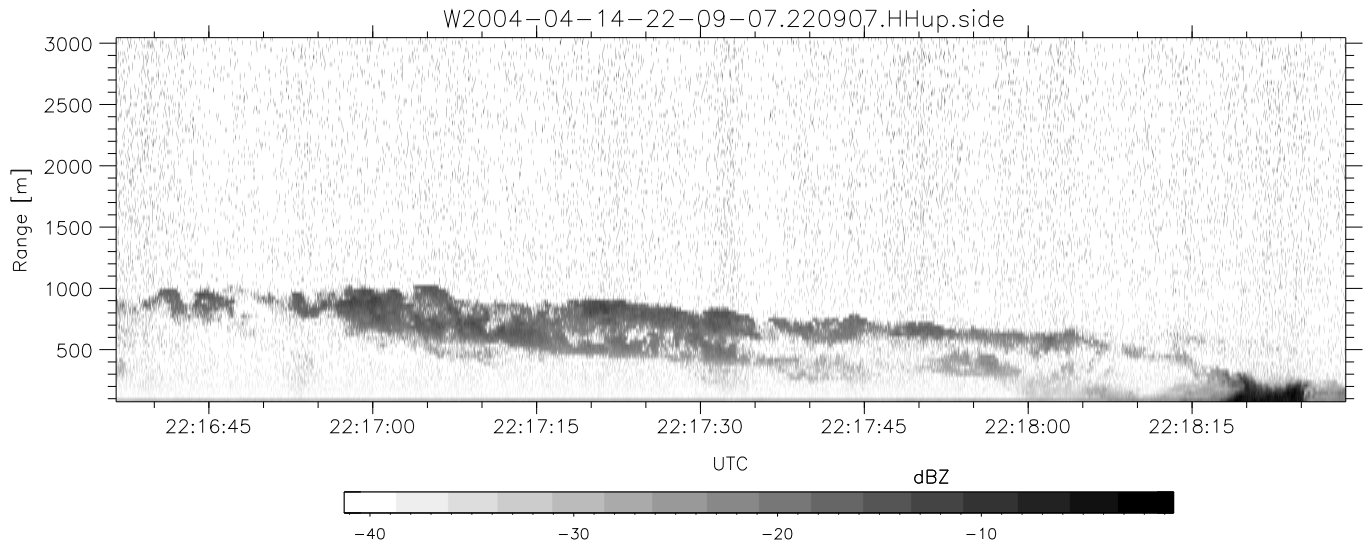
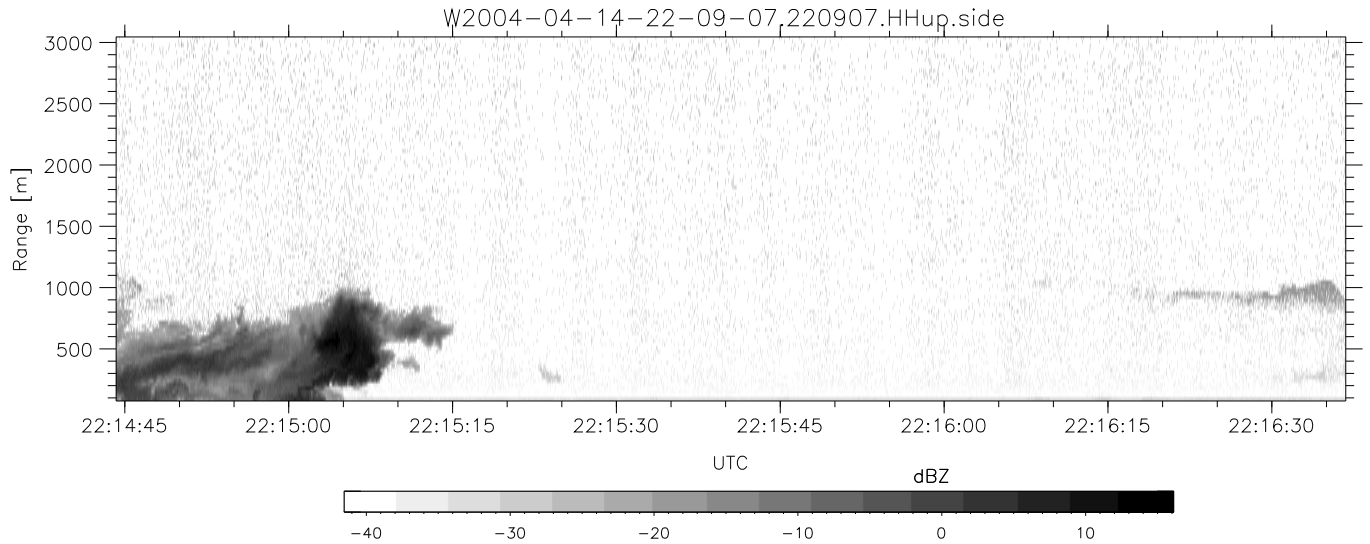


CIFEX 2004 Data (cal/250ns+2.5/100ns-3.5/500ns: 53.0,50.0)

W2004-04-14-22-09-07 - PPMAG4, IRIG:1/0/2  
 UTC: 22:09:07.30 to 23:33:22.53, Dur: 5055s  
 TimeLngth: 5055.18s, TimeInt: 28ms (35.4pps)  
 TimeCor=-13.0s, PPS(min,max,med): 35,36,35  
 Timeint/DSPdiff(mn,min,mx):28,28,28/28,28,28  
 Prof: 403 to 179551, NumProf(r/t): 35142/179148  
 ProcTime/Recs: 22:09:07-22:25:38/0-35141  
 ADacqtime: 25ms; DRate: 198.4KB/s; Flags: 0, 0, 0  
 Pulse: 275ns, IFfilt: 5.0MHz; ppPol: HH HV VV  
 TxPol: HHVV, PRF: 20 10 20 10 kHz, Noiseflg:4,2  
 Range: Delay 75m, Spacing 30m, Gates 100  
 Ave. Pulses: 84, Rng/Prof Aspect@90m/s: 11.8

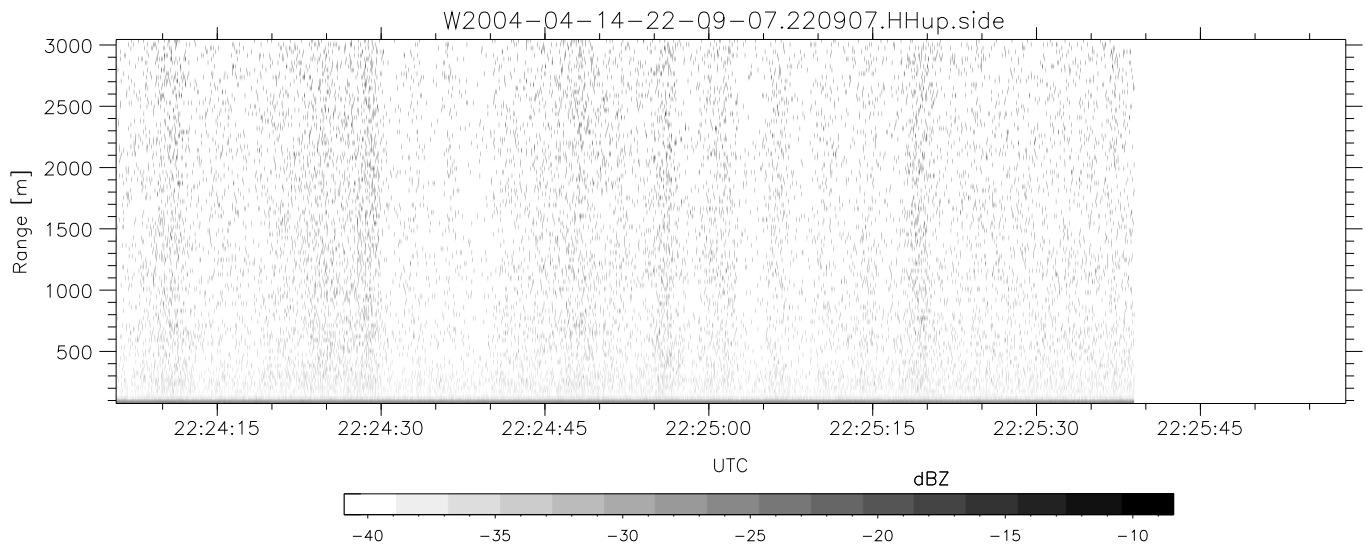
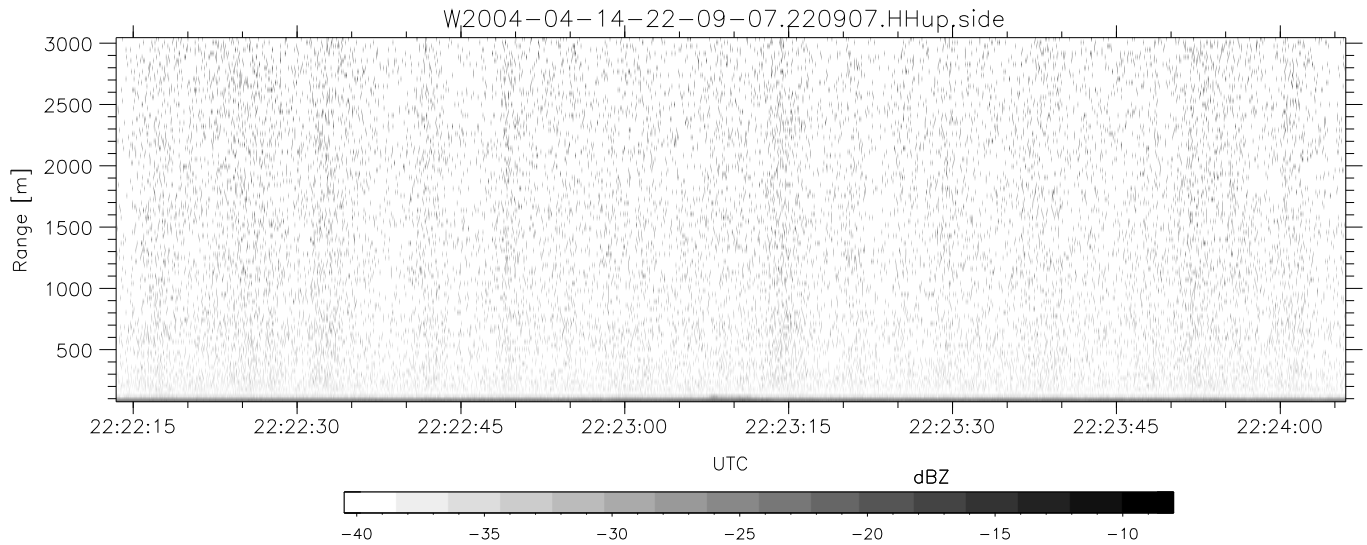
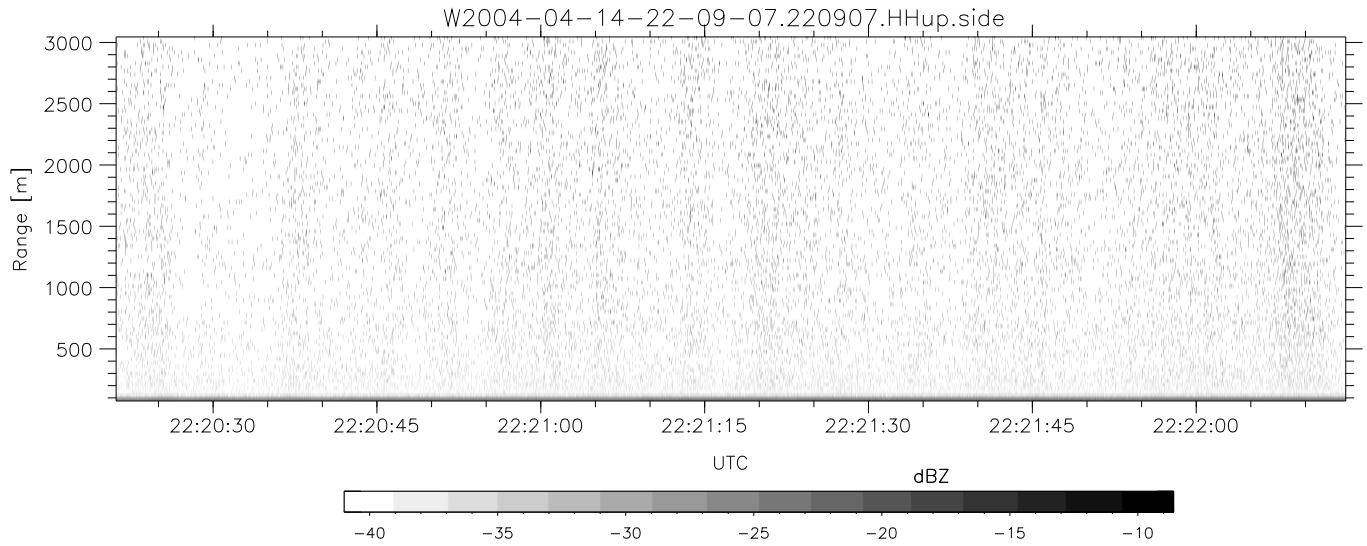
|           | Min    | Max    | Mean   | Std    | Varc% |
|-----------|--------|--------|--------|--------|-------|
| hhN(dB)   | -67.77 | -63.95 | -65.73 | -75.51 | 10.5  |
| vvN(dB)   | -67.61 | -63.90 | -65.67 | -75.42 | 10.6  |
| hhL(dB)   | -12.27 | 1.80   | -1.08  | -3.86  | 52.8  |
| vvL(dB)   | -2.86  | 6.00   | 4.20   | -0.33  | 35.2  |
| ppN(m/s)  | -12.66 | 12.81  | -0.02  | 4.14   |       |
| ppT(m/s)  | -99.99 | 101.22 | -0.14  | 32.73  |       |
| hh/vv(dB) | NaN    | 74.04  | NaN    | 55.13  | -529  |
| vh/hh(dB) | NaN    | -8.66  | -34.21 | -25.62 | 723.  |
| hv/vv(dB) | NaN    | -31.46 | -46.36 | -42.89 | 222.  |
| hnjmp(dB) |        |        |        | 0.16   |       |
| vnjmp(dB) |        |        |        | 0.16   |       |



CIFEX 2004 Data (cal/250ns+2.5/100ns-3.5/500ns: 53.0,50.0)

W2004-04-14-22-09-07 - PPMAG4, IRIG:1/0/2  
 UTC: 22:09:07.30 to 23:33:22.53, Dur: 5055s  
 TimeLngth: 5055.18s, TimeInt: 28ms (35.4pps)  
 TimeCor=-13.0s, PPS(min,max,med): 35,36,35  
 Timeint/DSPdiff(mn,min,mx):28,28,28/28,28,28  
 Prof: 403 to 179551, NumProf(r/t): 35142/179148  
 ProcTime/Recs: 22:09:07-22:25:38/0-35141  
 ADacqtime: 25ms; DRate: 198.4KB/s; Flags: 0, 0, 0  
 Pulse: 275ns, IFilt: 5.0MHz; ppPol: HH HV VV  
 TxPol: HHVV, PRF: 20 10 20 10 kHz, NoiseFlg:4,2  
 Range: Delay 75m, Spacing 30m, Gates 100  
 Ave. Pulses: 84, Rng/Prof Aspect@90m/s: 11.8

|            | Min    | Max    | Mean   | Std    | Varc% |
|------------|--------|--------|--------|--------|-------|
| hhN (dB)   | -67.77 | -63.95 | -65.73 | -75.51 | 10.5  |
| vvN (dB)   | -67.61 | -63.90 | -65.67 | -75.42 | 10.6  |
| hhL (dB)   | -12.27 | 1.80   | -1.08  | -3.86  | 52.8  |
| vvL (dB)   | -2.86  | 6.00   | 4.20   | -0.33  | 35.2  |
| ppN (m/s)  | -12.66 | 12.81  | -0.02  | 4.14   |       |
| ppT (m/s)  | -99.99 | 101.22 | -0.14  | 32.73  |       |
| hh/vv (dB) | NaN    | 74.04  | NaN    | 55.13  | -529  |
| vh/hh (dB) | NaN    | -8.66  | -34.21 | -25.62 | 723.  |
| hv/vv (dB) | NaN    | -31.46 | -46.36 | -42.89 | 222.  |
| hnjmp (dB) |        |        |        | 0.16   |       |
| vnjmp (dB) |        |        |        | 0.16   |       |



CIFEX 2004 Data (cal/250ns+2.5/100ns-3.5/500ns: 53.0,50.0)

W2004-04-14-22-09-07 - PPMAG4, IRIG:1/0/2  
 UTC: 22:09:07.30 to 23:33:22.53, Dur: 5055s  
 TimeLngth: 5055.18s, TimeInt: 28ms (35.4pps)  
 TimeCor=-13.0s, PPS(min,max,med): 35,36,35  
 Timeint/DSPdiff(mn,min,mx):28,28,28/28,28,28  
 Prof: 403 to 179551, NumProf(r/t): 35142/179148  
 ProcTime/Recs: 22:09:07-22:25:38/0-35141  
 ADacqtime: 25ms; DRate: 198.4KB/s; Flags: 0, 0, 0  
 Pulse: 275ns, IFilt: 5.0MHz; ppPol: HH HV VV  
 TxPol: HHVV, PRF: 20 10 20 10 kHz, NoiseFlg:4,2  
 Range: Delay 75m, Spacing 30m, Gates 100  
 Ave. Pulses: 84, Rng/Prof Aspect@90m/s: 11.8

|             | Min    | Max    | Mean   | Std    | Varc% |
|-------------|--------|--------|--------|--------|-------|
| hhN (dB)    | -67.77 | -63.95 | -65.73 | -75.51 | 10.5  |
| vvN (dB)    | -67.61 | -63.90 | -65.67 | -75.42 | 10.6  |
| hhL (dB)    | -12.27 | 1.80   | -1.08  | -3.86  | 52.8  |
| vvL (dB)    | -2.86  | 6.00   | 4.20   | -0.33  | 35.2  |
| ppN (m/s)   | -12.66 | 12.81  | -0.02  | 4.14   |       |
| ppT (m/s)   | -99.99 | 101.22 | -0.14  | 32.73  |       |
| hh/vv (dB)  | NaN    | 74.04  | NaN    | 55.13  | -529  |
| vh/hh (dB)  | NaN    | -8.66  | -34.21 | -25.62 | 723.  |
| hv/vv (dB)  | NaN    | -31.46 | -46.36 | -42.89 | 222.  |
| hn_jmp (dB) |        |        |        | 0.16   |       |
| vn_jmp (dB) |        |        |        | 0.16   |       |