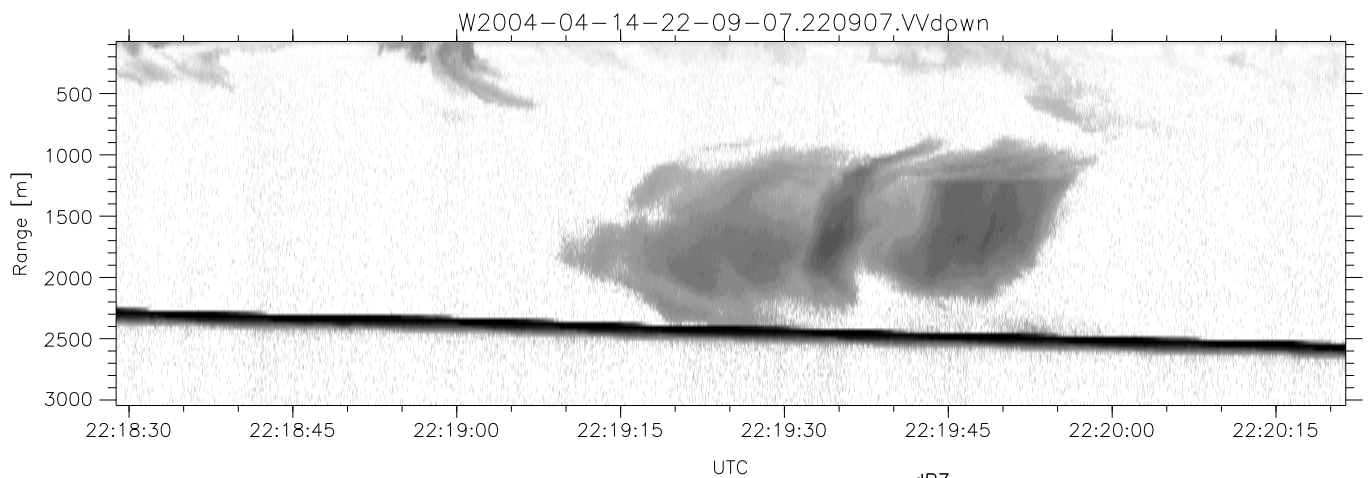
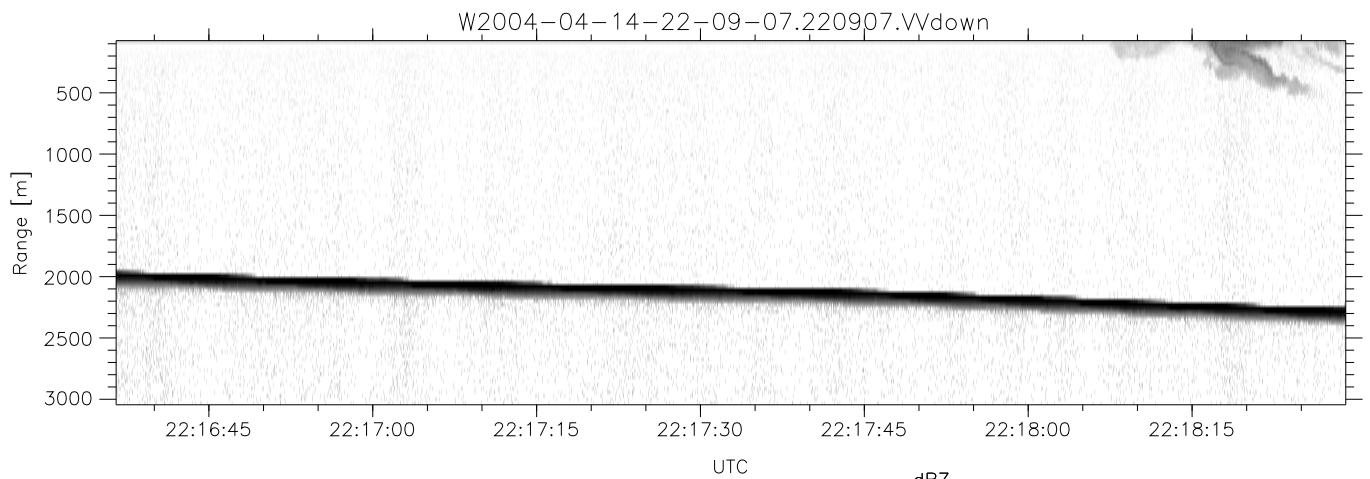
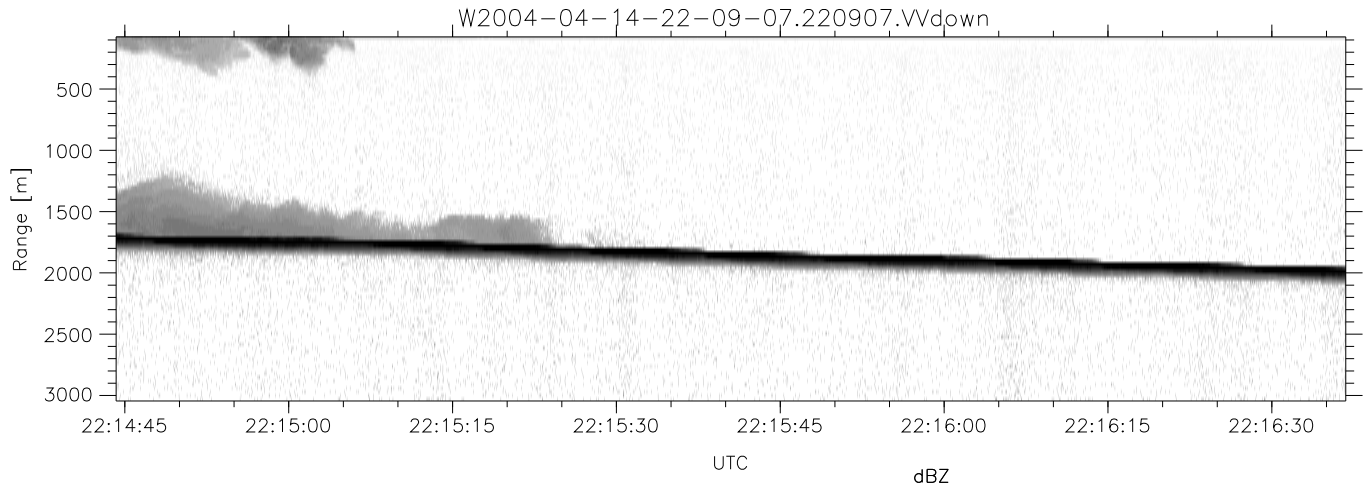


CIFEX 2004 Data (cal/250ns+2.5/100ns-3.5/500ns: 53.0,50.0)

W2004-04-14-22-09-07 - PPMAG4, IRIG:1/0/2
 UTC: 22:09:07.30 to 23:33:22.53, Dur: 5055s
 TimeLngth: 5055.18s, TimeInt: 28ms (35.4pps)
 TimeCor=-13.0s, PPS(min,max,med): 35,36,35
 Timeint/DSPdiff(mn,min,mx):28,28,28/28,28,28
 Prof: 403 to 179551, NumProf(r/t): 35142/179148
 ProcTime/Recs: 22:09:07-22:25:38/0-35141
 ADacqtime: 25ms; DRate: 198.4KB/s; Flags: 0, 0, 0
 Pulse: 275ns, IFfilt: 5.0MHz; ppPol: HH HV VV
 TxPol: HHV, PRF: 20 10 20 10 kHz, Noiseflg:4,2
 Range: Delay 75m, Spacing 30m, Gates 100
 Ave. Pulses: 84, Rng/Prof Aspect@90m/s: 11.8

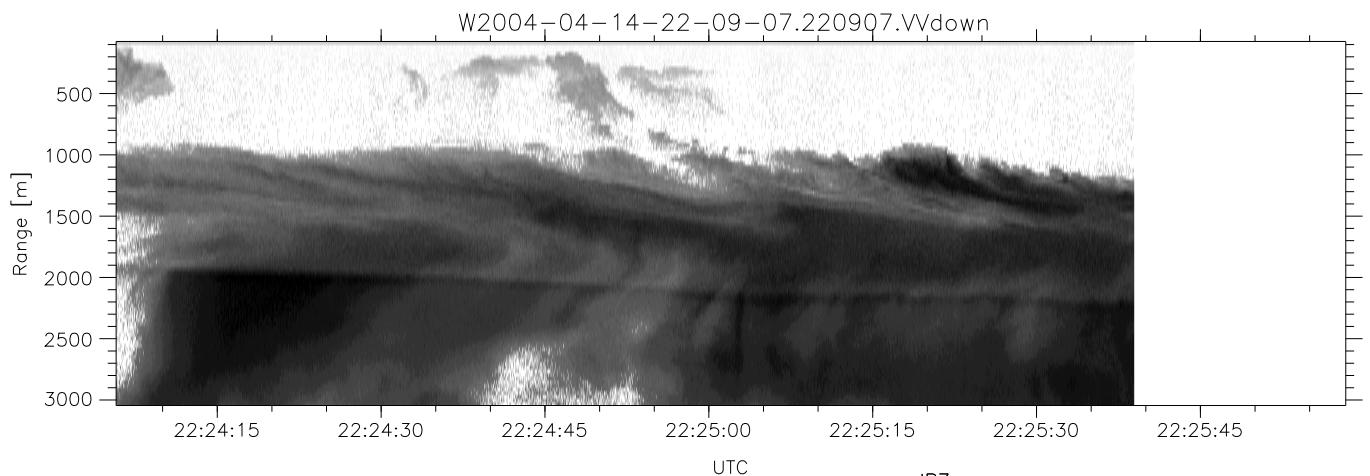
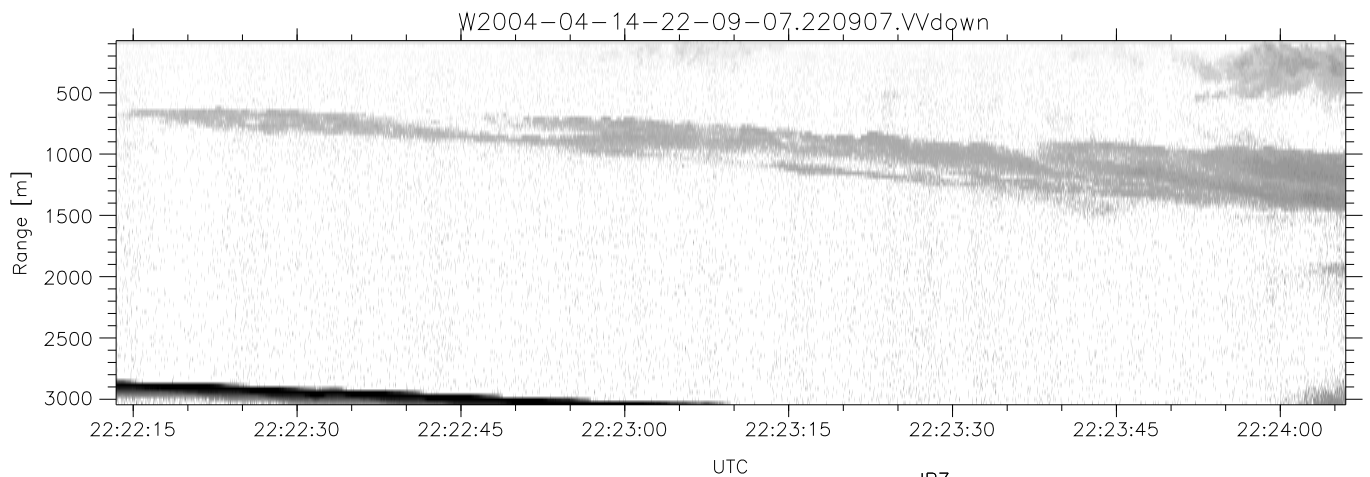
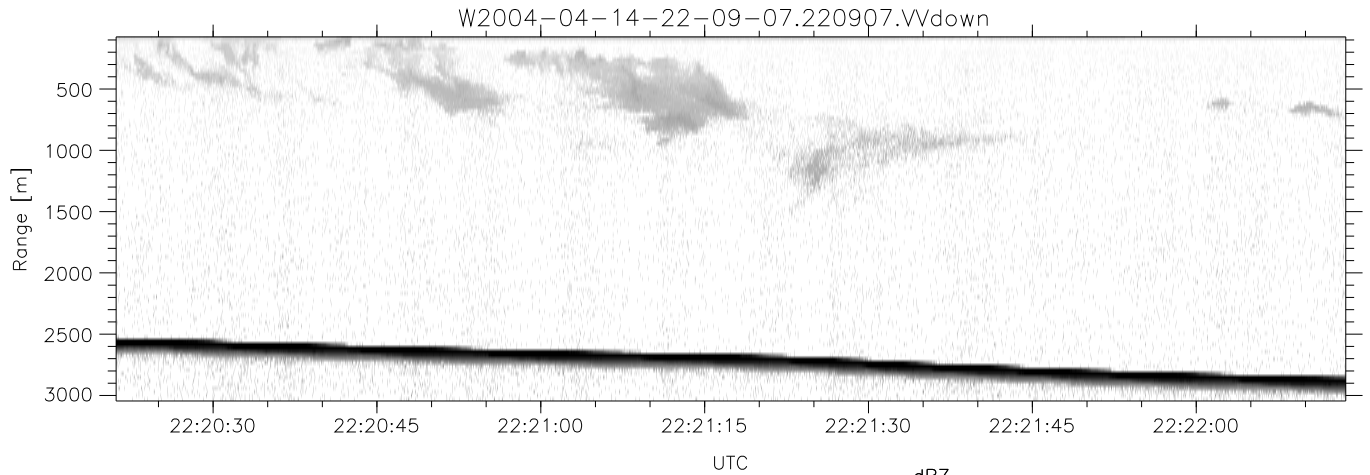
	Min	Max	Mean	Std	Varc%
hhN (dB)	-67.77	-63.95	-65.73	-75.51	10.5
vvN (dB)	-67.61	-63.90	-65.67	-75.42	10.6
hhL (dB)	-12.27	1.80	-1.08	-3.86	52.8
vvL (dB)	-2.86	6.00	4.20	-0.33	35.2
ppN (m/s)	-12.66	12.81	-0.02	4.14	
ppT (m/s)	-99.99	101.22	-0.14	32.73	
hh/vv (dB)	NaN	74.04	NaN	55.13	-529
vh/hh (dB)	NaN	-8.66	-34.21	-25.62	723.
hv/vv (dB)	NaN	-31.46	-46.36	-42.89	222.
hnjmp (dB)				0.16	
vnjmp (dB)				0.16	



CIFEX 2004 Data (cal/250ns+2.5/100ns-3.5/500ns: 53.0,50.0)

W2004-04-14-22-09-07 - PPMAG4, IRIG:1/0/2
 UTC: 22:09:07.30 to 23:33:22.53, Dur: 5055s
 TimeLngth: 5055.18s, TimeInt: 28ms (35.4pps)
 TimeCor=-13.0s, PPS(min,max,med): 35,36,35
 Timeint/DSPdiff(mn,min,mx):28,28,28/28,28,28
 Prof: 403 to 179551, NumProf(r/t): 35142/179148
 ProcTime/Recs: 22:09:07-22:25:38/0-35141
 ADacqtime: 25ms; DRate: 198.4KB/s; Flags: 0, 0, 0
 Pulse: 275ns, IFilt: 5.0MHz; ppPol: HH HV VV
 TxPol: HHVV, PRF: 20 10 20 10 kHz, NoiseFlg:4,2
 Range: Delay 75m, Spacing 30m, Gates 100
 Ave. Pulses: 84, Rng/Prof Aspect@90m/s: 11.8

	Min	Max	Mean	Std	Varc%
hhN(dB)	-67.77	-63.95	-65.73	-75.51	10.5
vvN(dB)	-67.61	-63.90	-65.67	-75.42	10.6
hhL(dB)	-12.27	1.80	-1.08	-3.86	52.8
vvL(dB)	-2.86	6.00	4.20	-0.33	35.2
ppN(m/s)	-12.66	12.81	-0.02	4.14	
ppT(m/s)	-99.99	101.22	-0.14	32.73	
hh/vv(dB)	NaN	74.04	NaN	55.13	-529
vh/hh(dB)	NaN	-8.66	-34.21	-25.62	723.
hv/vv(dB)	NaN	-31.46	-46.36	-42.89	222.
hnjmp(dB)				0.16	
vnjmp(dB)				0.16	



CIFEX 2004 Data (cal/250ns+2.5/100ns-3.5/500ns: 53.0,50.0)

W2004-04-14-22-09-07 - PPMAG4, IRIG:1/0/2
 UTC: 22:09:07.30 to 23:33:22.53, Dur: 5055s
 TimeLngth: 5055.18s, TimeInt: 28ms (35.4pps)
 TimeCor=-13.0s, PPS(min,max,med): 35,36,35
 Timeint/DSPdiff(mn,min,mx):28,28,28/28,28,28
 Prof: 403 to 179551, NumProf(r/t): 35142/179148
 ProcTime/Recs: 22:09:07-22:25:38/0-35141
 ADacqtime: 25ms; DRate: 198.4KB/s; Flags: 0, 0, 0
 Pulse: 275ns, IFilt: 5.0MHz; ppPol: HH HV VV
 TxPol: HHVV, PRF: 20 10 20 10 kHz, NoiseFlg:4,2
 Range: Delay 75m, Spacing 30m, Gates 100
 Ave. Pulses: 84, Rng/Prof Aspect@90m/s: 11.8

	Min	Max	Mean	Std	Varc%
hhN (dB)	-67.77	-63.95	-65.73	-75.51	10.5
vvN (dB)	-67.61	-63.90	-65.67	-75.42	10.6
hhL (dB)	-12.27	1.80	-1.08	-3.86	52.8
vvL (dB)	-2.86	6.00	4.20	-0.33	35.2
ppN (m/s)	-12.66	12.81	-0.02	4.14	
ppT (m/s)	-99.99	101.22	-0.14	32.73	
hh/vv (dB)	NaN	74.04	NaN	55.13	-529
vh/hh (dB)	NaN	-8.66	-34.21	-25.62	723.
hv/vv (dB)	NaN	-31.46	-46.36	-42.89	222.
hn_jmp (dB)				0.16	
vn_jmp (dB)				0.16	