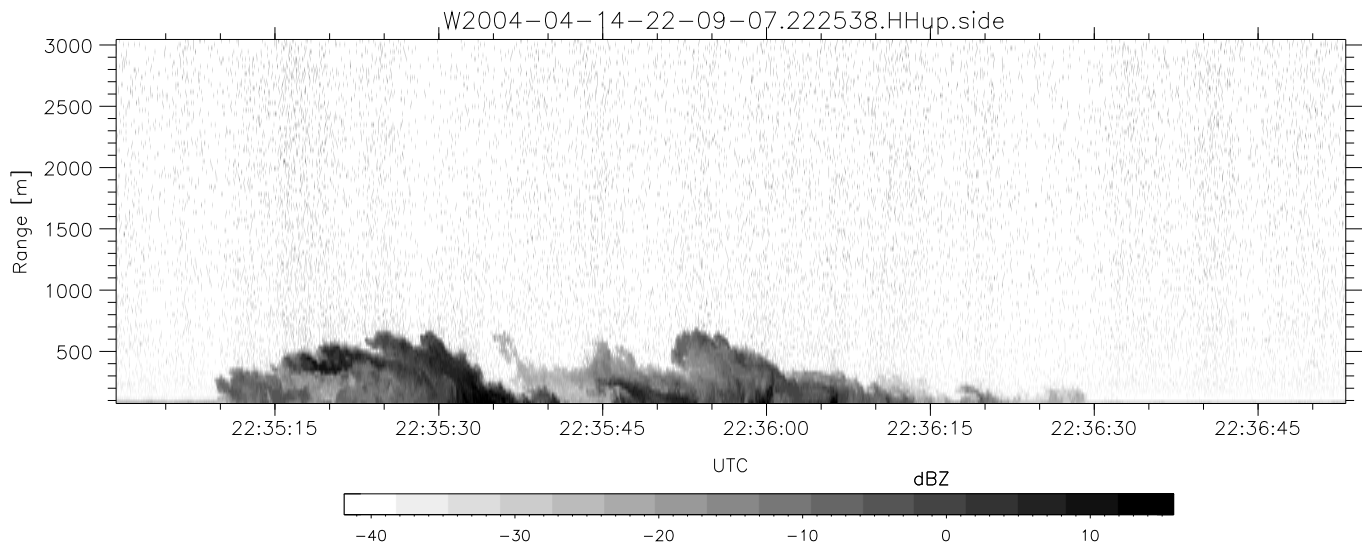
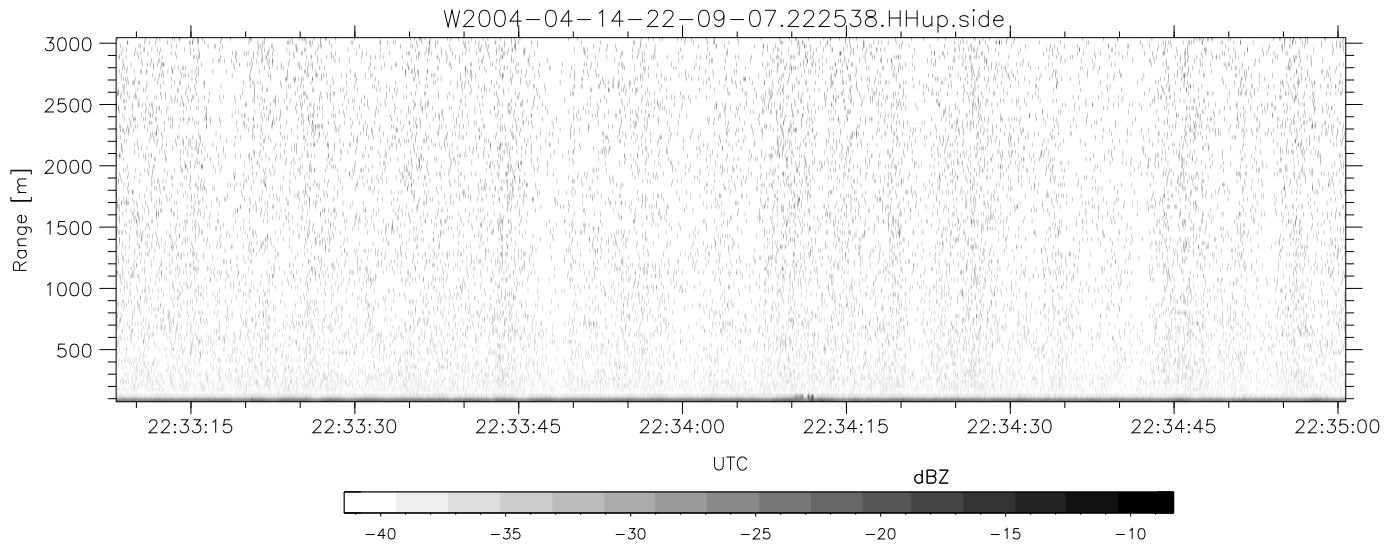
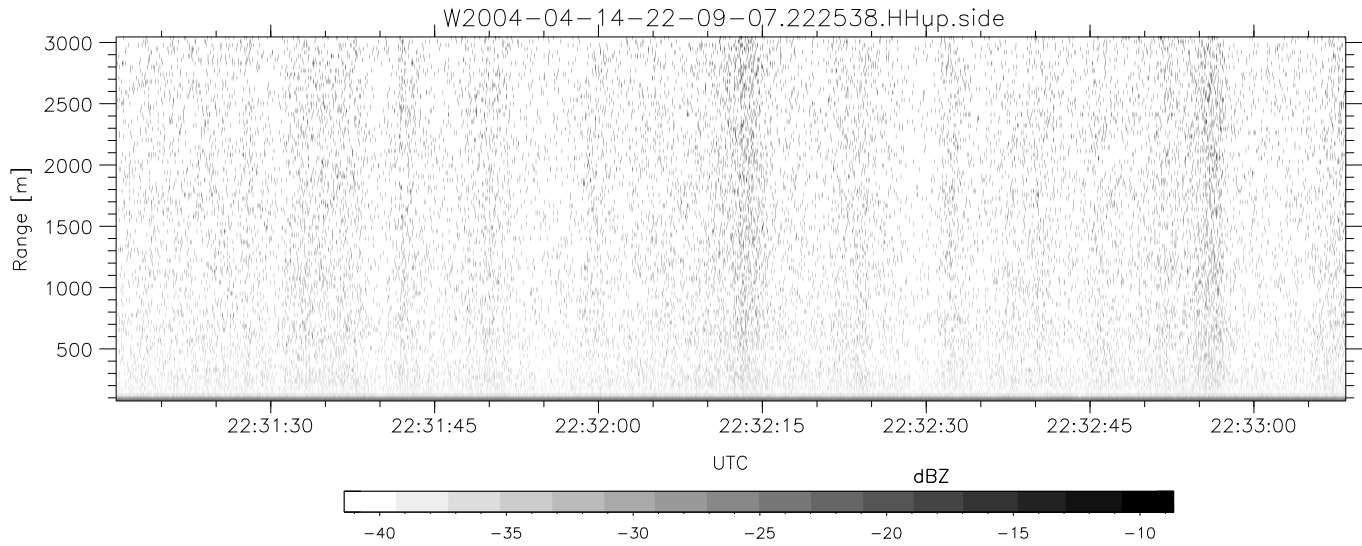


CIFEX 2004 Data (cal/250ns+2.5/100ns-3.5/500ns: 53.0,50.0)

W2004-04-14-22-09-07 - PPMAG4, IRIG:1/0/2
 UTC: 22:09:07.30 to 23:33:22.53, Dur: 5055s
 TimeLngth: 5055.18s, TimeInt: 28ms (35.4pps)
 TimeCor=-13.0s, PPS(min,max,med): 35,36,35
 Timeint/DSPdiff(mn,min,mx):28,28,30/28,28,28
 Prof: 403 to 179551, NumProf(r/t): 35142/179148
 ProcTime/Recs: 22:25:38-22:42:10/35142-70283
 ADacqtime: 25ms; DRate: 198.4KB/s; Flags: 0, 0, 0
 Pulse: 275ns, IFilt: 5.0MHz; ppPol: HH HV VV
 TxPol: HHVV, PRF: 20 10 20 10 kHz, NoiseFlg:4,3
 Range: Delay 75m, Spacing 30m, Gates 100
 Ave. Pulses: 84, Rng/Prof Aspect@90m/s: 11.8

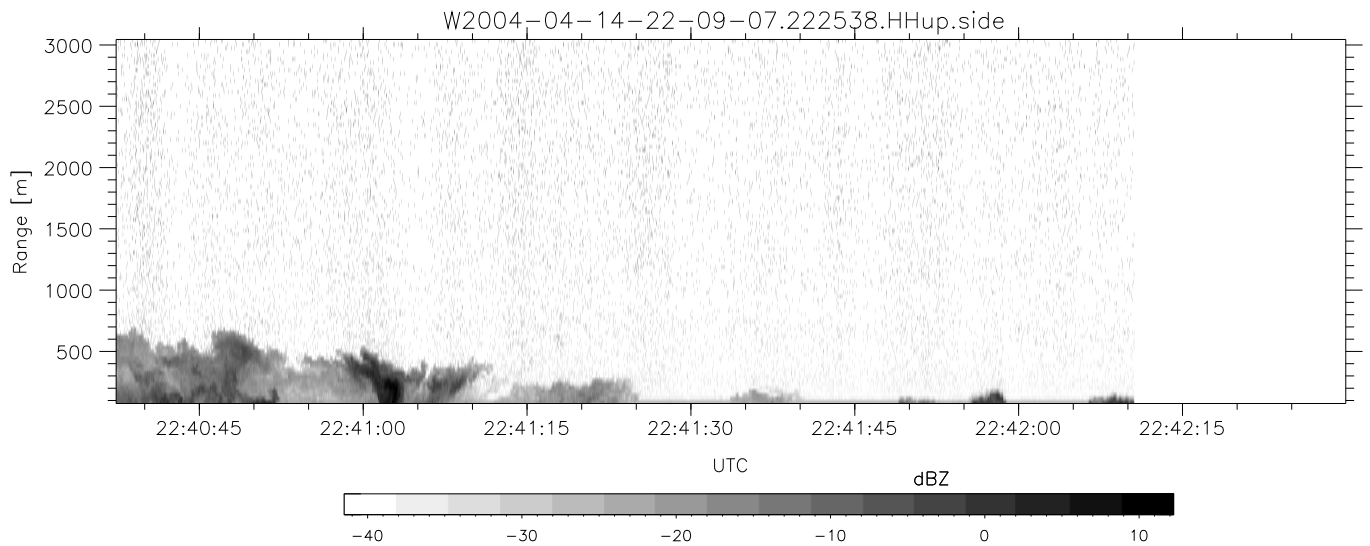
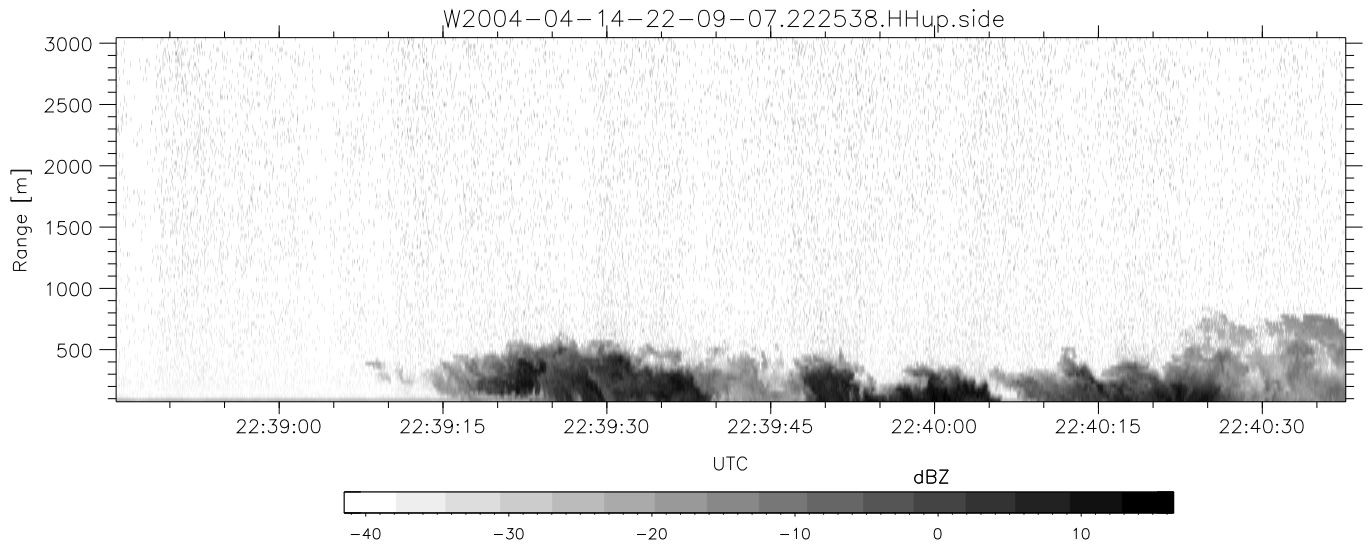
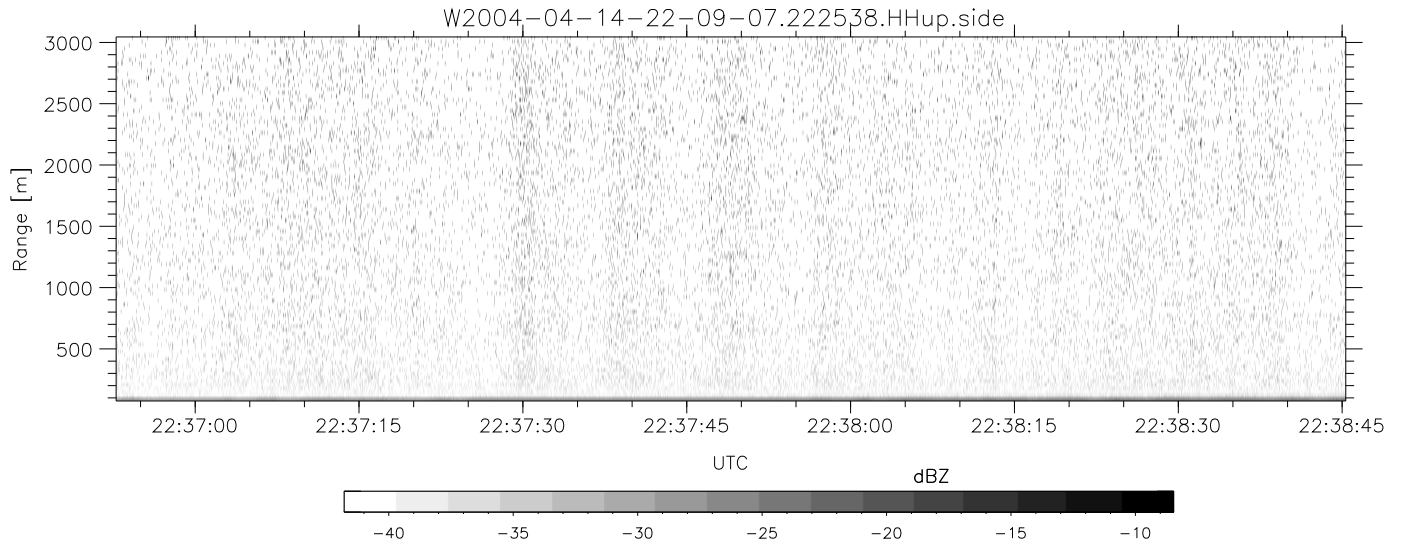
	Min	Max	Mean	Std	Varc%
hhN(dB)	-67.87	-64.36	-66.02	-76.01	10.0
vvN(dB)	-67.87	-63.93	-65.79	-75.75	10.1
hhL(dB)	-10.21	3.18	-0.70	-5.35	34.2
vvL(dB)	-13.29	6.00	-0.28	-2.14	65.0
ppN(m/s)	-12.64	12.70	-0.01	4.11	
ppT(m/s)	-99.82	100.35	-0.05	32.44	
hh/vv(dB)	NaN	39.03	0.57	32.83	1682
vh/hh(dB)	NaN	-23.99	-36.84	-34.85	158.
hv/vv(dB)	NaN	-33.88	-50.99	-43.36	579.
hnjmp(dB)			0.15		
vnjmp(dB)			0.15		



CIFEX 2004 Data (cal/250ns+2.5/100ns-3.5/500ns: 53.0,50.0)

W2004-04-14-22-09-07 - PPMAG4, IRIG:1/0/2
 UTC: 22:09:07.30 to 23:33:22.53, Dur: 5055s
 TimeLngth: 5055.18s, TimeInt: 28ms (35.4pps)
 TimeCor=-13.0s, PPS(min,max,med): 35,36,35
 Timeint/DSPdiff(mn,min,mx):28,28,30/28,28,28
 Prof: 403 to 179551, NumProf(r/t): 35142/179148
 ProcTime/Recs: 22:25:38-22:42:10/35142-70283
 ADacqtime: 25ms; DRate: 198.4KB/s; Flags: 0, 0, 0
 Pulse: 275ns, IFilt: 5.0MHz; ppPol: HH HV VV
 TxPol: HHVV, PRF: 20 10 20 10 kHz, NoiseFlg:4,3
 Range: Delay 75m, Spacing 30m, Gates 100
 Ave. Pulses: 84, Rng/Prof Aspect@90m/s: 11.8

	Min	Max	Mean	Std	Varc%
hhN(dB)	-67.87	-64.36	-66.02	-76.01	10.0
vvN(dB)	-67.87	-63.93	-65.79	-75.75	10.1
hhL(dB)	-10.21	3.18	-0.70	-5.35	34.2
vvL(dB)	-13.29	6.00	-0.28	-2.14	65.0
ppN(m/s)	-12.64	12.70	-0.01	4.11	
ppT(m/s)	-99.82	100.35	-0.05	32.44	
hh/vv(dB)	NaN	39.03	0.57	32.83	1682
vh/hh(dB)	NaN	-23.99	-36.84	-34.85	158.
hv/vv(dB)	NaN	-33.88	-50.99	-43.36	579.
hnjmp(dB)			0.15		
vnjmp(dB)			0.15		



CIFEX 2004 Data (cal/250ns+2.5/100ns-3.5/500ns: 53.0,50.0)

W2004-04-14-22-09-07 - PPMAG4, IRIG:1/0/2
 UTC: 22:09:07.30 to 23:33:22.53, Dur: 5055s
 TimeLngth: 5055.18s, TimeInt: 28ms (35.4pps)
 TimeCor=-13.0s, PPS(min,max,med): 35,36,35
 Timeint/DSPdiff(mn,min,mx):28,28,30/28,28,28
 Prof: 403 to 179551, NumProf(r/t): 35142/179148
 ProcTime/Recs: 22:25:38-22:42:10/35142-70283
 ADacqtime: 25ms; DRate: 198.4KB/s; Flags: 0, 0, 0
 Pulse: 275ns, IFilt: 5.0MHz; ppPol: HH HV VV
 TxPol: HHVV, PRF: 20 10 20 10 kHz, NoiseFlg:4,3
 Range: Delay 75m, Spacing 30m, Gates 100
 Ave. Pulses: 84, Rng/Prof Aspect@90m/s: 11.8

	Min	Max	Mean	Std	Varc%
hhN(dB)	-67.87	-64.36	-66.02	-76.01	10.0
vvN(dB)	-67.87	-63.93	-65.79	-75.75	10.1
hhL(dB)	-10.21	3.18	-0.70	-5.35	34.2
vvL(dB)	-13.29	6.00	-0.28	-2.14	65.0
ppN(m/s)	-12.64	12.70	-0.01	4.11	
ppT(m/s)	-99.82	100.35	-0.05	32.44	
hh/vv(dB)	NaN	39.03	0.57	32.83	1682
vh/hh(dB)	NaN	-23.99	-36.84	-34.85	158.
hv/vv(dB)	NaN	-33.88	-50.99	-43.36	579.
hnjmp(dB)			0.15		
vnjmp(dB)			0.15		