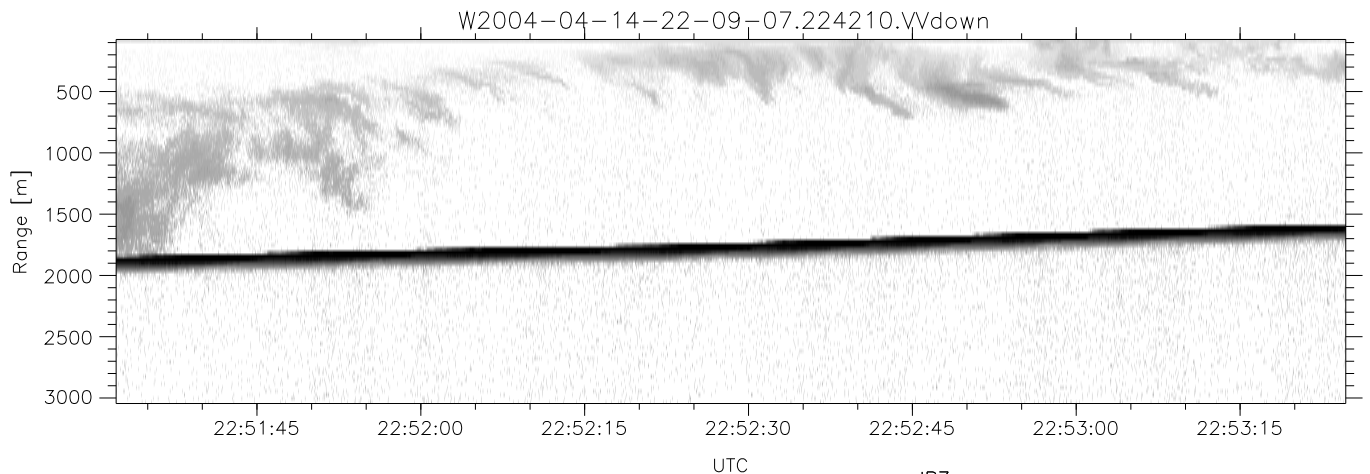
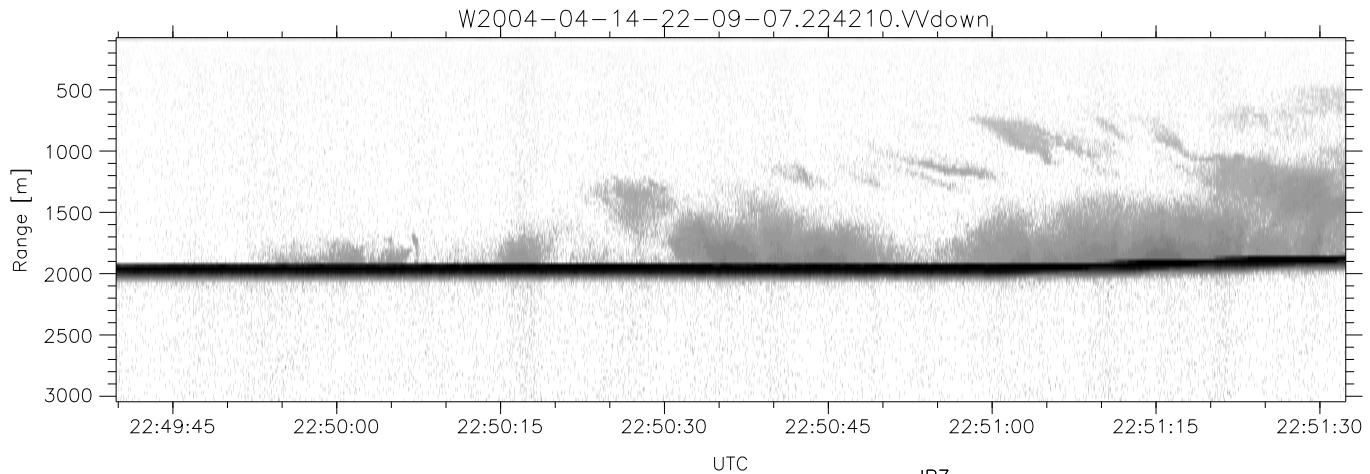
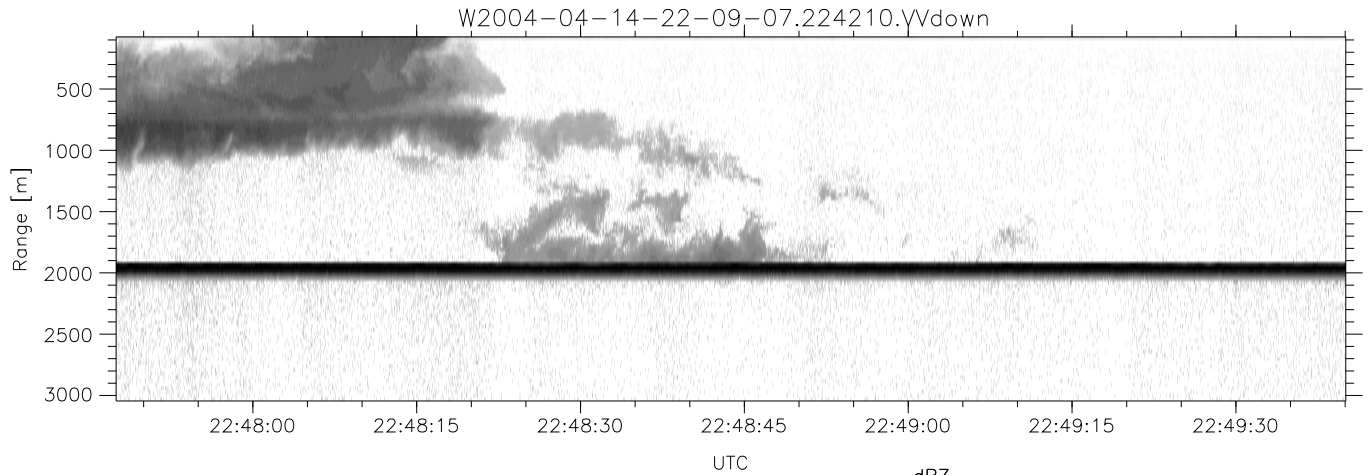


CIFEX 2004 Data (cal/250ns+2.5/100ns-3.5/500ns: 53.0,50.0)

W2004-04-14-22-09-07 - PPMAG4, IRIG:1/0/2
 UTC: 22:09:07.30 to 23:33:22.53, Dur: 5055s
 TimeLngth: 5055.18s, TimeInt: 28ms (35.4pps)
 TimeCor=-13.0s, PPS(min,max,med): 35,36,35
 Timeint/DSPdiff(mn,min,mx):28,28,39/28,28,39
 Prof: 403 to 179551, NumProf(r/t): 35142/179148
 ProcTime/Recs: 22:42:10-22:58:42/70284-105425
 ADacqtime: 25ms; DRate: 198.4KB/s; Flags: 0, 0, 0
 Pulse: 275ns, IFilt: 5.0MHz; ppPol: HH HV VV
 TxPol: HHVV, PRF: 20 10 20 10 kHz, Noiseflg:2,3
 Range: Delay 75m, Spacing 30m, Gates 100
 Ave. Pulses: 84, Rng/Prof Aspect@90m/s: 11.8

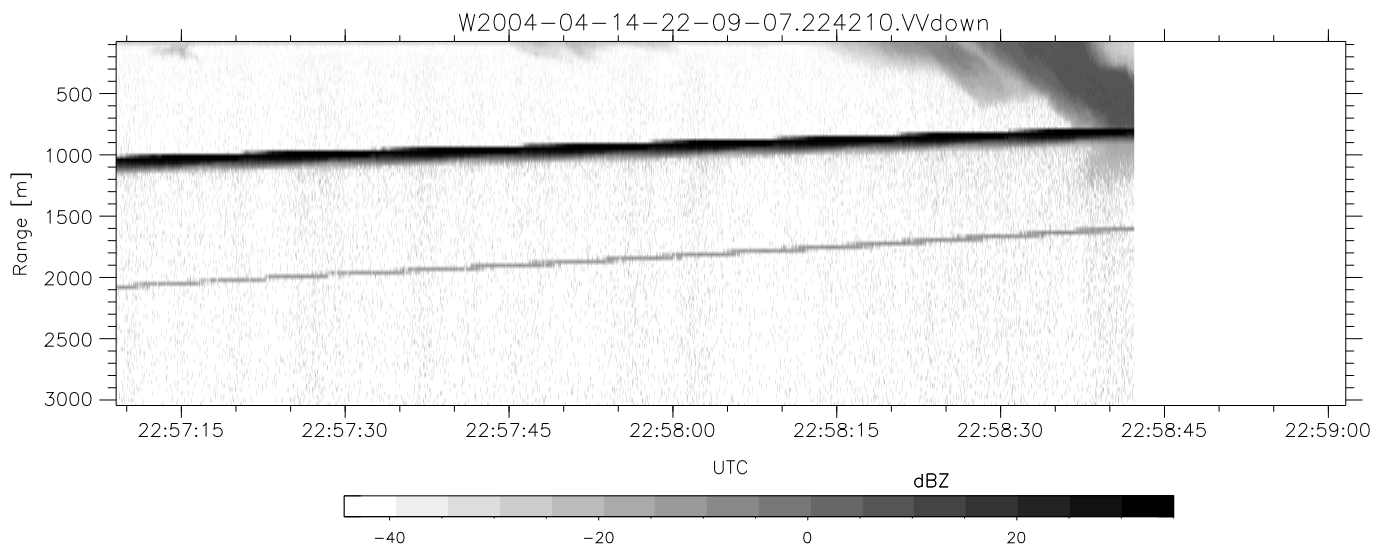
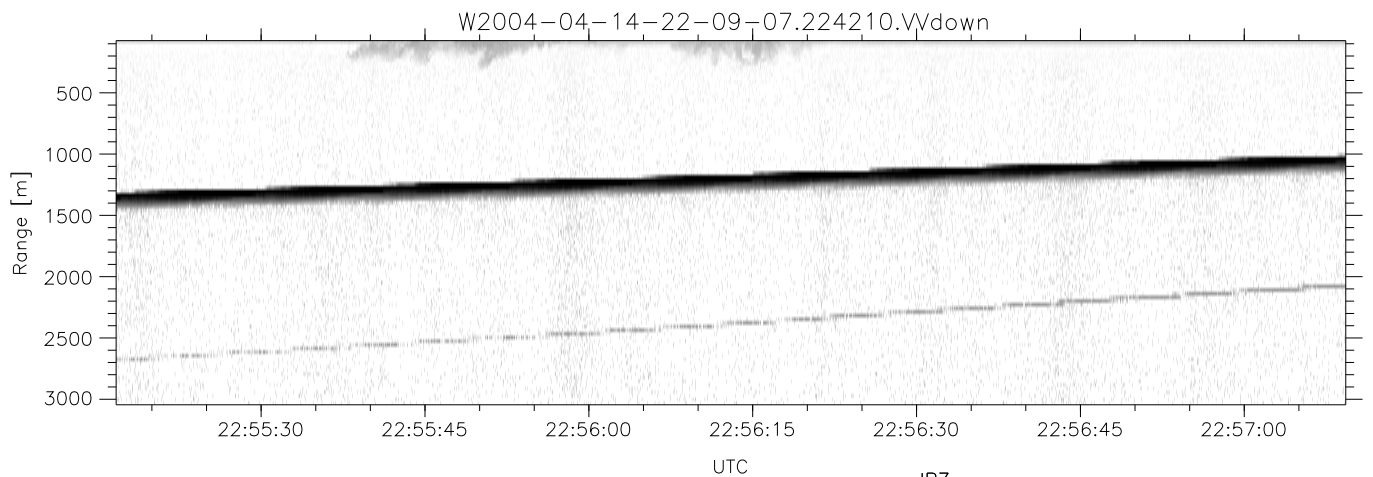
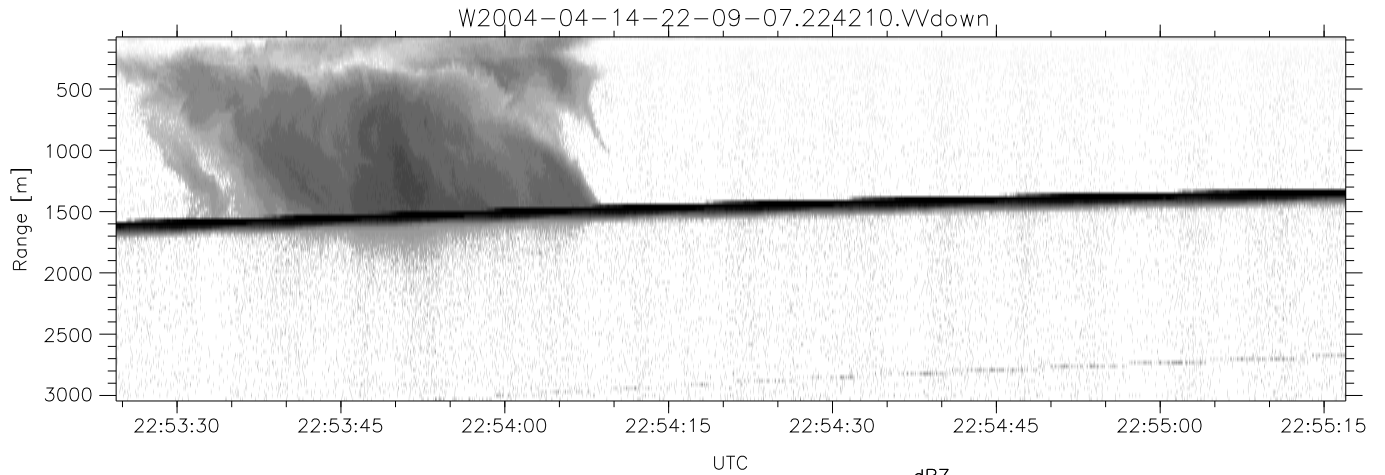
	Min	Max	Mean	Std	Varc%
hhN(dB)	-68.12	-64.47	-66.13	-76.13	10.0
vvN(dB)	-68.23	-64.28	-66.10	-75.86	10.6
hhL(dB)	-23.90	1.68	-1.89	-4.61	53.5
vvL(dB)	-15.82	6.00	1.11	0.52	87.3
ppN(m/s)	-12.55	12.48	-0.06	4.13	
ppT(m/s)	-99.15	98.61	-0.49	32.62	
hh/vv(dB)	NaN	59.58	13.01	37.81	3018
vh/hh(dB)	NaN	-24.95	-37.48	-36.41	127.
hv/vv(dB)	NaN	-33.09	-48.04	-43.35	294.
hnjmp(dB)			0.15		
vnjmp(dB)			0.14		



CIFEX 2004 Data (cal/250ns+2.5/100ns-3.5/500ns: 53.0,50.0)

W2004-04-14-22-09-07 - PPMAG4, IRIG:1/0/2
 UTC: 22:09:07.30 to 23:33:22.53, Dur: 5055s
 TimeLngth: 5055.18s, TimeInt: 28ms (35.4pps)
 TimeCor=-13.0s, PPS(min,max,med): 35,36,35
 Timeint/DSPdiff(mn,min,mx):28,28,39/28,28,39
 Prof: 403 to 179551, NumProf(r/t): 35142/179148
 ProcTime/Recs: 22:42:10-22:58:42/70284-105425
 ADacqtime: 25ms; DRate: 198.4KB/s; Flags: 0, 0, 0
 Pulse: 275ns, IFilt: 5.0MHz; ppPol: HH HV VV
 TxPol: HHVV, PRF: 20 10 20 10 kHz, NoiseFlg:2,3
 Range: Delay 75m, Spacing 30m, Gates 100
 Ave. Pulses: 84, Rng/Prof Aspect@90m/s: 11.8

	Min	Max	Mean	Std	Varc%
hhN(dB)	-68.12	-64.47	-66.13	-76.13	10.0
vvN(dB)	-68.23	-64.28	-66.10	-75.86	10.6
hhL(dB)	-23.90	1.68	-1.89	-4.61	53.5
vvL(dB)	-15.82	6.00	1.11	0.52	87.3
ppN(m/s)	-12.55	12.48	-0.06	4.13	
ppT(m/s)	-99.15	98.61	-0.49	32.62	
hh/vv(dB)	NaN	59.58	13.01	37.81	3018
vh/hh(dB)	NaN	-24.95	-37.48	-36.41	127.
hv/vv(dB)	NaN	-33.09	-48.04	-43.35	294.
hnjmp(dB)				0.15	
vnjmp(dB)				0.14	



CIFEX 2004 Data (cal/250ns+2.5/100ns-3.5/500ns: 53.0,50.0)

W2004-04-14-22-09-07 - PPMAG4, IRIG:1/0/2
 UTC: 22:09:07.30 to 23:33:22.53, Dur: 5055s
 TimeLngth: 5055.18s, TimeInt: 28ms (35.4pps)
 TimeCor=-13.0s, PPS(min,max,med): 35,36,35
 Timeint/DSPdiff(mn,min,mx):28,28,39/28,28,39
 Prof: 403 to 179551, NumProf(r/t): 35142/179148
 ProcTime/Recs: 22:42:10-22:58:42/70284-105425
 ADacqtime: 25ms; DRate: 198.4KB/s; Flags: 0, 0, 0
 Pulse: 275ns, IFfilt: 5.0MHz; ppPol: HH HV VV
 TxPol: HHVV, PRF: 20 10 20 10 kHz, NoiseFlg:2,3
 Range: Delay 75m, Spacing 30m, Gates 100
 Ave. Pulses: 84, Rng/Prof Aspect@90m/s: 11.8

	Min	Max	Mean	Std	Varc%
hhN(dB)	-68.12	-64.47	-66.13	-76.13	10.0
vvN(dB)	-68.23	-64.28	-66.10	-75.86	10.6
hhL(dB)	-23.90	1.68	-1.89	-4.61	53.5
vvL(dB)	-15.82	6.00	1.11	0.52	87.3
ppN(m/s)	-12.55	12.48	-0.06	4.13	
ppT(m/s)	-99.15	98.61	-0.49	32.62	
hh/vv(dB)	NaN	59.58	13.01	37.81	3018
vh/hh(dB)	NaN	-24.95	-37.48	-36.41	127.
hv/vv(dB)	NaN	-33.09	-48.04	-43.35	294.
hn_jmp(dB)			0.15		
vn_jmp(dB)			0.14		