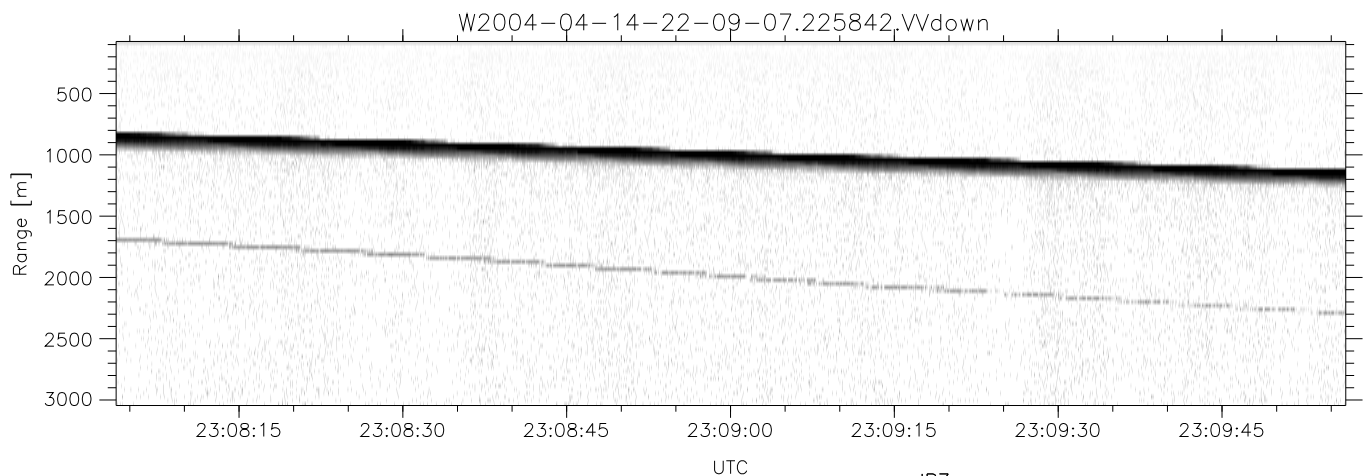
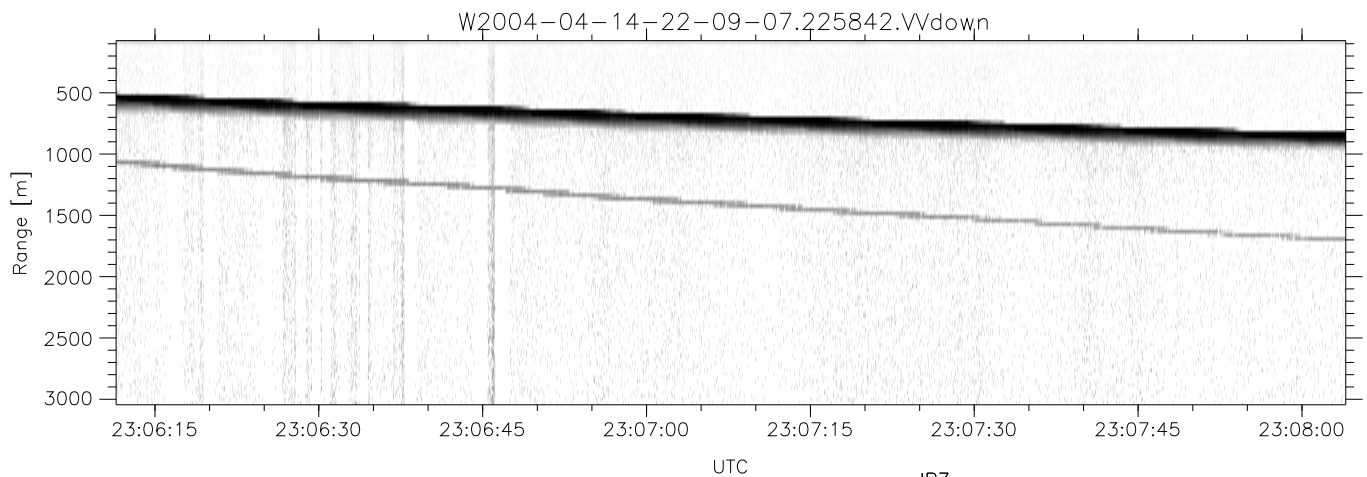
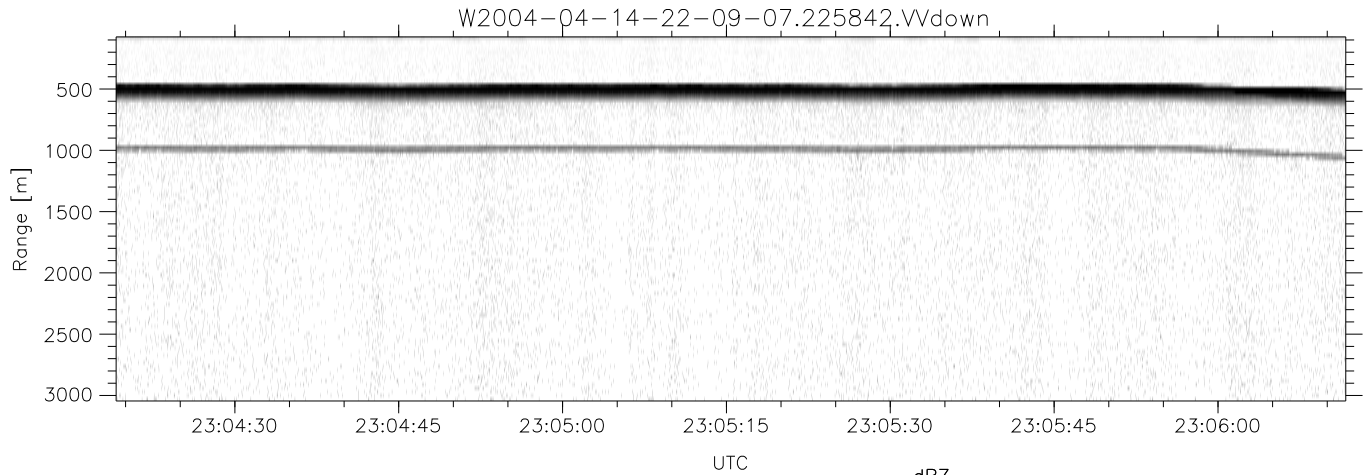


CIFEX 2004 Data (cal/250ns+2.5/100ns-3.5/500ns: 53.0,50.0)

W2004-04-14-22-09-07 - PPMAG4, IRIG:1/0/2
 UTC: 22:09:07.30 to 23:33:22.53, Dur: 5055s
 TimeLngth: 5055.18s, TimeInt: 28ms (35.4pps)
 TimeCor=-13.0s, PPS(min,max,med): 35,36,35
 Timeint/DSPdiff(mn,min,mx):28,28,44/28,28,44
 Prof: 403 to 179551, NumProf(r/t): 35142/179148
 ProcTime/Recs: 22:58:42-23:15:13/105426-140567
 ADacqtime: 25ms; DRate: 198.4KB/s; Flags: 0, 0, 0
 Pulse: 275ns, IFfilt: 5.0MHz; ppPol: HH HV VV
 TxPol: HHVV, PRF: 20 10 20 10 kHz, Noiseflg:4,1
 Range: Delay 75m, Spacing 30m, Gates 100
 Ave. Pulses: 84, Rng/Prof Aspect@90m/s: 11.8

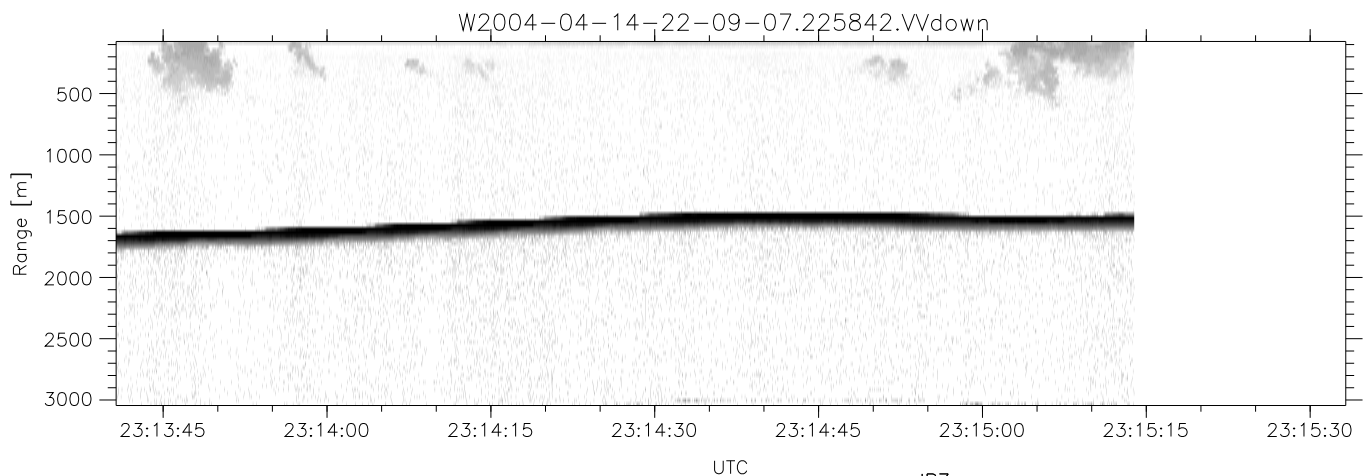
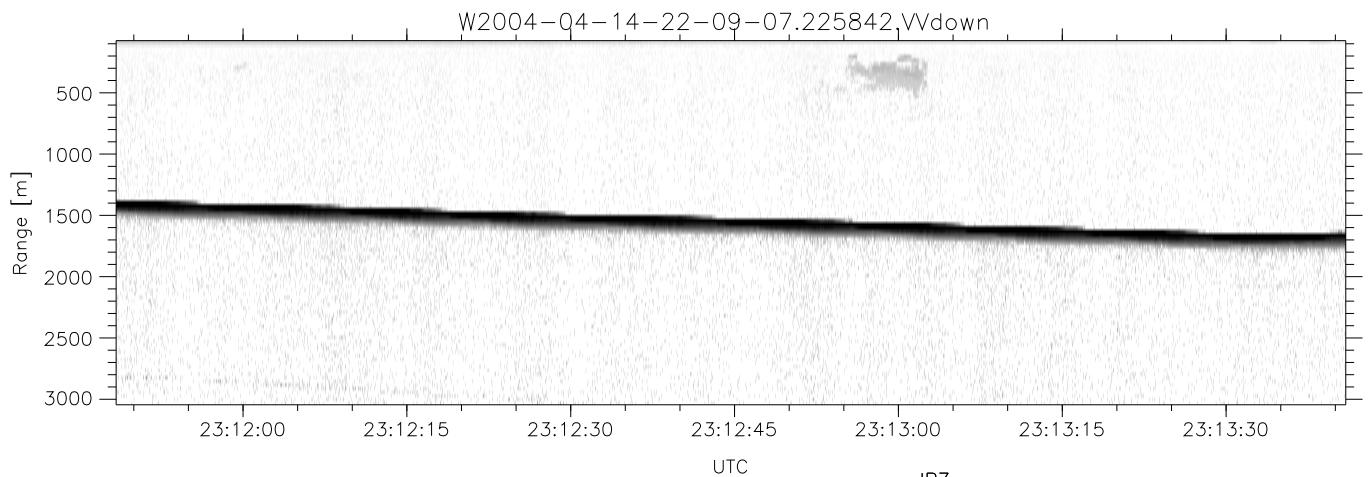
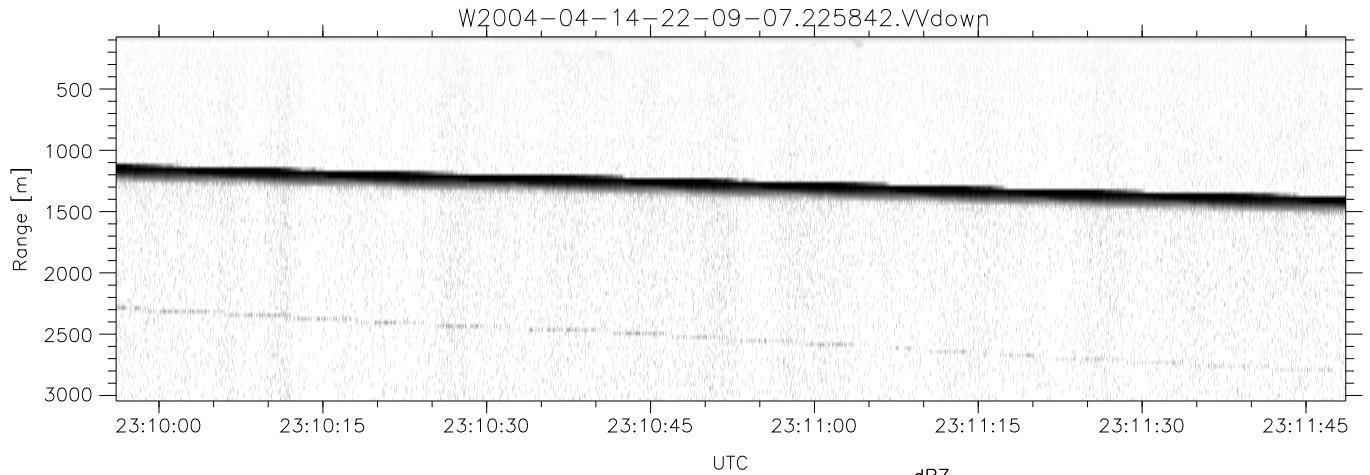
	Min	Max	Mean	Std	Varc%
hhN (dB)	-68.12	-64.68	-66.21	-76.22	10.0
vvN (dB)	-68.06	-64.24	-66.25	-76.08	10.4
hhL (dB)	-14.98	1.87	-3.15	-3.86	84.9
vvL (dB)	-5.55	6.00	4.44	0.16	37.3
ppN (m/s)	-12.54	12.62	-0.08	4.15	
ppT (m/s)	-99.04	99.69	-0.61	32.81	
hh/vv (dB)	NaN	75.82	28.83	51.96	2057
vh/hh (dB)	NaN	-29.60	-37.63	-37.17	111.
hv/vv (dB)	NaN	-34.22	-55.57	-46.27	852.
hnjmp (dB)			0.15		
vnjmp (dB)			0.15		



CIFEX 2004 Data (cal/250ns+2.5/100ns-3.5/500ns: 53.0,50.0)

W2004-04-14-22-09-07 - PPMAG4, IRIG:1/0/2
 UTC: 22:09:07.30 to 23:33:22.53, Dur: 5055s
 TimeLngth: 5055.18s, TimeInt: 28ms (35.4pps)
 TimeCor=-13.0s, PPS(min,max,med): 35,36,35
 Timeint/DSPdiff(mn,min,mx):28,28,44/28,28,44
 Prof: 403 to 179551, NumProf(r/t): 35142/179148
 ProcTime/Recs: 22:58:42-23:15:13/105426-140567
 ADacqtime: 25ms; DRate: 198.4KB/s; Flags: 0, 0, 0
 Pulse: 275ns, IFilt: 5.0MHz; ppPol: HH HV VV
 TxPol: HHVV, PRF: 20 10 20 10 kHz, NoiseFlg:4,1
 Range: Delay 75m, Spacing 30m, Gates 100
 Ave. Pulses: 84, Rng/Prof Aspect@90m/s: 11.8

	Min	Max	Mean	Std	Varc%
hhN (dB)	-68.12	-64.68	-66.21	-76.22	10.0
vvN (dB)	-68.06	-64.24	-66.25	-76.08	10.4
hhL (dB)	-14.98	1.87	-3.15	-3.86	84.9
vvL (dB)	-5.55	6.00	4.44	0.16	37.3
ppN (m/s)	-12.54	12.62	-0.08	4.15	
ppT (m/s)	-99.04	99.69	-0.61	32.81	
hh/vv (dB)	NaN	75.82	28.83	51.96	2057
vh/hh (dB)	NaN	-29.60	-37.63	-37.17	111.
hv/vv (dB)	NaN	-34.22	-55.57	-46.27	852.
hn_jmp (dB)				0.15	
vn_jmp (dB)				0.15	



CIFEX 2004 Data (cal/250ns+2.5/100ns-3.5/500ns: 53.0,50.0)

W2004-04-14-22-09-07 - PPMAG4, IRIG:1/0/2
 UTC: 22:09:07.30 to 23:33:22.53, Dur: 5055s
 TimeLngth: 5055.18s, TimeInt: 28ms (35.4pps)
 TimeCor=-13.0s, PPS(min,max,med): 35,36,35
 Timeint/DSPdiff(mn,min,mx):28,28,44/28,28,44
 Prof: 403 to 179551, NumProf(r/t): 35142/179148
 ProcTime/Recs: 22:58:42-23:15:13/105426-140567
 ADacqtime: 25ms; DRate: 198.4KB/s; Flags: 0, 0, 0
 Pulse: 275ns, IFfilt: 5.0MHz; ppPol: HH HV VV
 TxPol: HHVV, PRF: 20 10 20 10 kHz, NoiseFlg:4,1
 Range: Delay 75m, Spacing 30m, Gates 100
 Ave. Pulses: 84, Rng/Prof Aspect@90m/s: 11.8

	Min	Max	Mean	Std	Varc%
hhN (dB)	-68.12	-64.68	-66.21	-76.22	10.0
vvN (dB)	-68.06	-64.24	-66.25	-76.08	10.4
hhL (dB)	-14.98	1.87	-3.15	-3.86	84.9
vvL (dB)	-5.55	6.00	4.44	0.16	37.3
ppN (m/s)	-12.54	12.62	-0.08	4.15	
ppT (m/s)	-99.04	99.69	-0.61	32.81	
hh/vv (dB)	NaN	75.82	28.83	51.96	2057
vh/hh (dB)	NaN	-29.60	-37.63	-37.17	111.
hv/vv (dB)	NaN	-34.22	-55.57	-46.27	852.
hn_jmp (dB)			0.15		
vn_jmp (dB)			0.15		