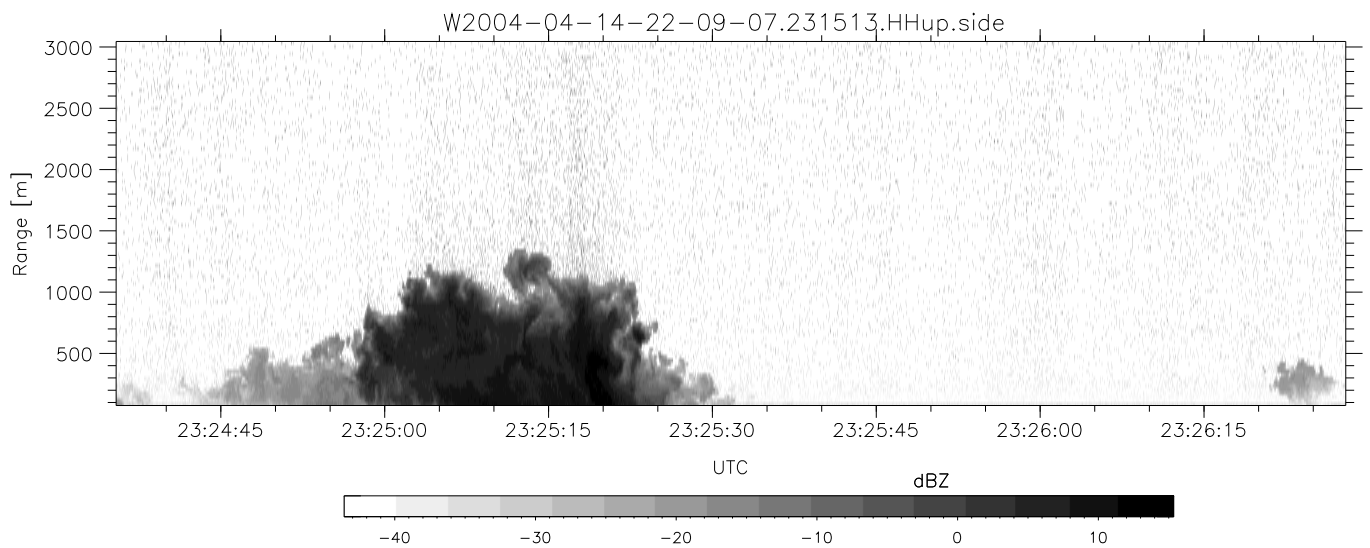
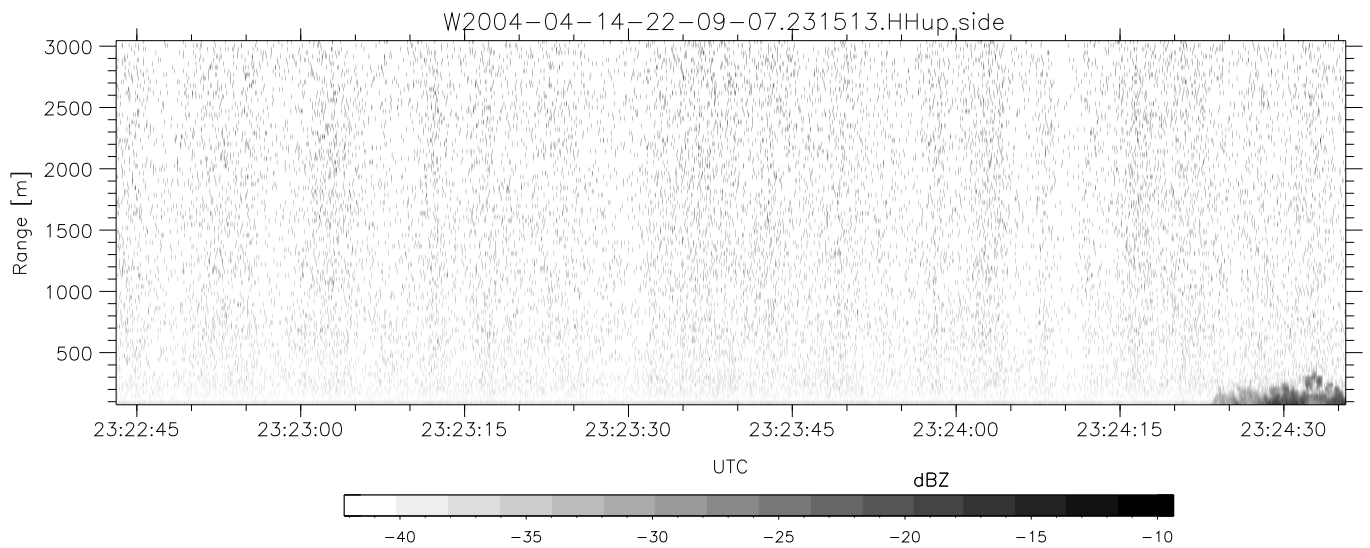
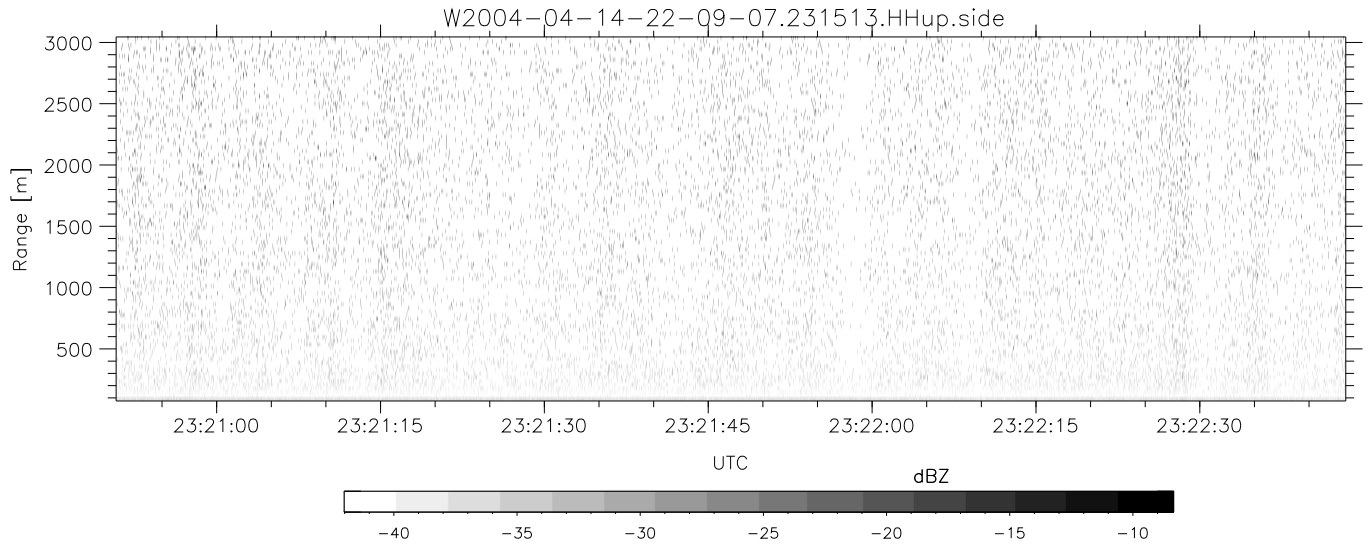


CIFEX 2004 Data (cal/250ns+2.5/100ns-3.5/500ns: 53.0,50.0)

W2004-04-14-22-09-07 - PPMAG4, IRIG:1/0/2
 UTC: 22:09:07.30 to 23:33:22.53, Dur: 5055s
 TimeLngth: 5055.18s, TimeInt: 28ms (35.4pps)
 TimeCor=-13.0s, PPS(min,max,med): 35,36,35
 Timeint/DSPdiff(mn,min,mx):28,28,28/28,28,28
 Prof: 403 to 179551, NumProf(r/t): 35142/179148
 ProcTime/Recs: 23:15:13-23:31:45/140568-175709
 ADacqtime: 25ms; DRate: 198.4KB/s; Flags: 0, 0, 0
 Pulse: 275ns, IFilt: 5.0MHz; ppPol: HH HV VV
 TxPol: HHVV, PRF: 20 10 20 10 kHz, NoiseFlg:2,4
 Range: Delay 75m, Spacing 30m, Gates 100
 Ave. Pulses: 84, Rng/Prof Aspect@90m/s: 11.8

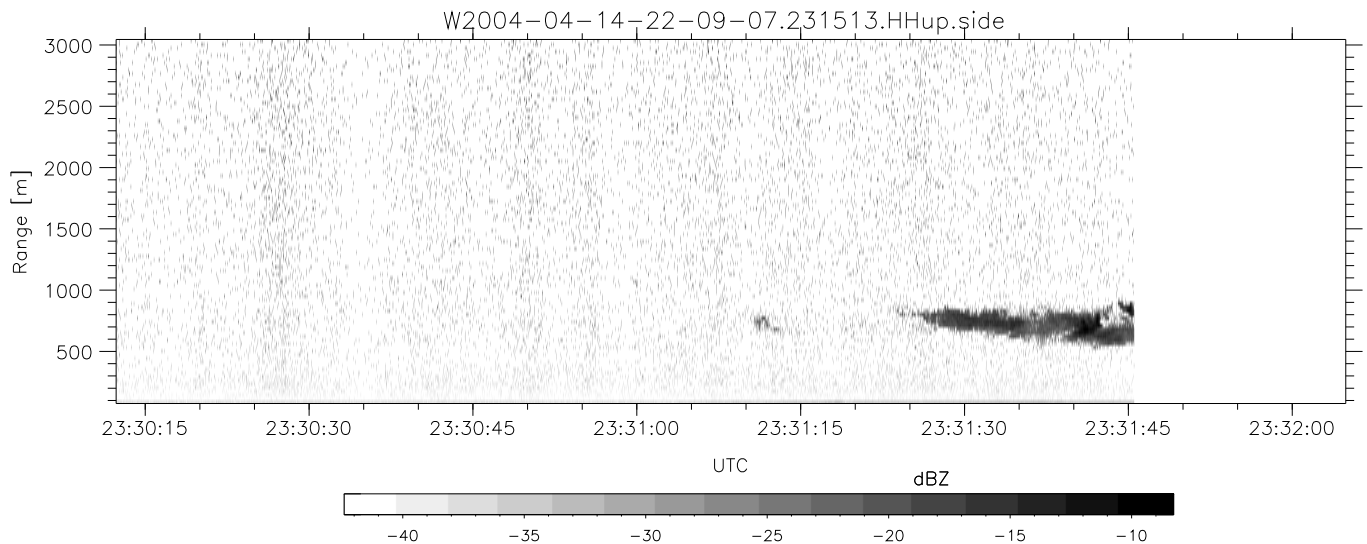
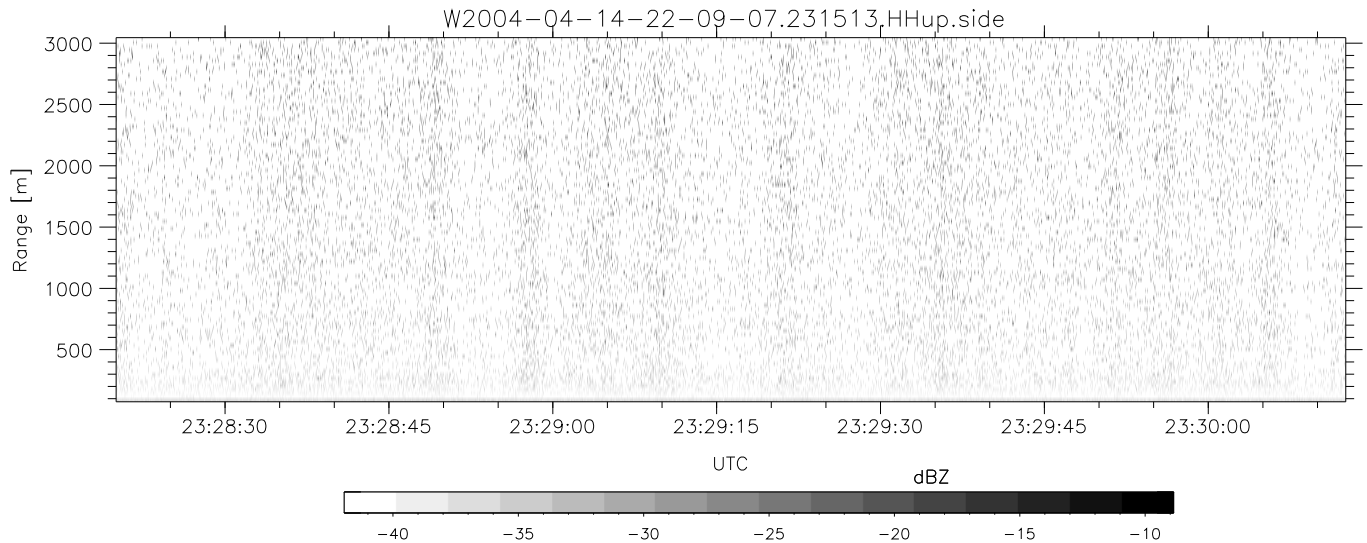
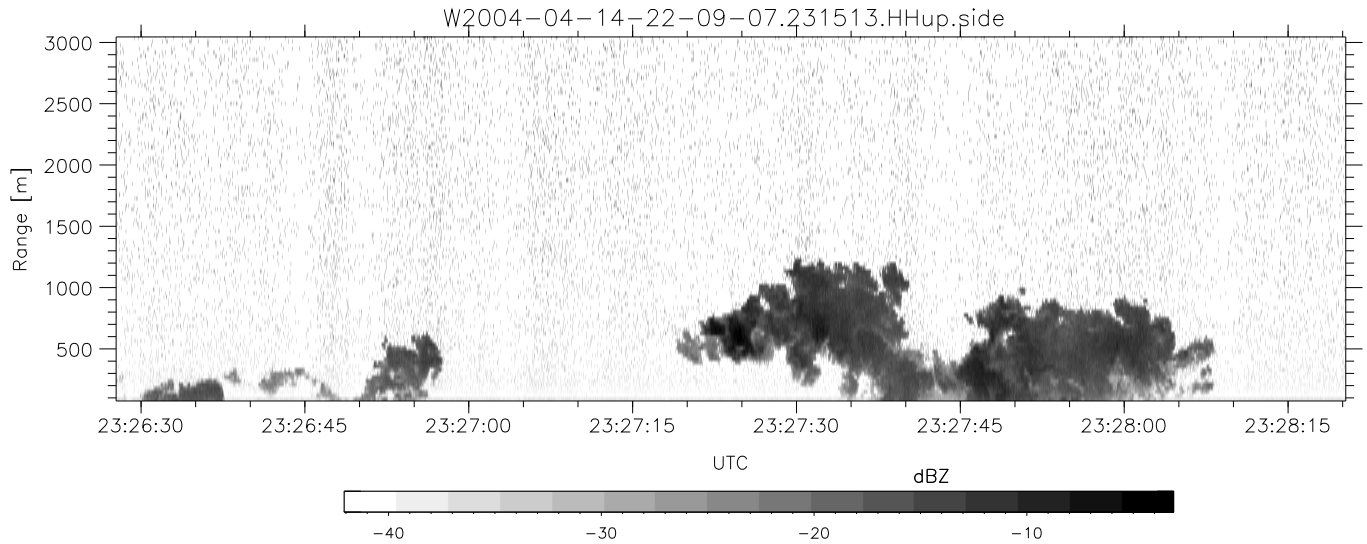
	Min	Max	Mean	Std	Varc%
hhN (dB)	-68.24	-64.65	-66.32	-76.33	10.0
vvN (dB)	-68.34	-64.61	-66.36	-76.32	10.1
hhL (dB)	-21.33	-5.80	-11.23	-16.88	27.2
vvL (dB)	-13.08	6.00	5.96	-5.72	6.8
ppN (m/s)	-12.97	12.33	-0.01	4.15	
ppT (m/s)	-102.5	97.40	-0.10	32.80	
hh/vv (dB)	NaN	55.66	19.40	39.47	1014
vh/hh (dB)	NaN	-28.17	-40.54	-38.38	164.
hv/vv (dB)	NaN	-33.73	-56.04	-46.80	838.
hh_jmp (dB)				0.15	
vv_jmp (dB)				0.16	



CIFEX 2004 Data (cal/250ns+2.5/100ns-3.5/500ns: 53.0,50.0)

W2004-04-14-22-09-07 - PPMAG4, IRIG:1/0/2
 UTC: 22:09:07.30 to 23:33:22.53, Dur: 5055s
 TimeLngth: 5055.18s, TimeInt: 28ms (35.4pps)
 TimeCor=-13.0s, PPS(min,max,med): 35,36,35
 Timeint/DSPdiff(mn,min,mx):28,28,28/28,28,28
 Prof: 403 to 179551, NumProf(r/t): 35142/179148
 ProcTime/Recs: 23:15:13-23:31:45/140568-175709
 ADacqtime: 25ms; DRate: 198.4KB/s; Flags: 0, 0, 0
 Pulse: 275ns, IFilt: 5.0MHz; ppPol: HH HV VV
 TxPol: HHVV, PRF: 20 10 20 10 kHz, NoiseFlg:2,4
 Range: Delay 75m, Spacing 30m, Gates 100
 Ave. Pulses: 84, Rng/Prof Aspect@90m/s: 11.8

	Min	Max	Mean	Std	Varc%
hhN (dB)	-68.24	-64.65	-66.32	-76.33	10.0
vvN (dB)	-68.34	-64.61	-66.36	-76.32	10.1
hhL (dB)	-21.33	-5.80	-11.23	-16.88	27.2
vvL (dB)	-13.08	6.00	5.96	-5.72	6.8
ppN (m/s)	-12.97	12.33	-0.01	4.15	
ppT (m/s)	-102.5	97.40	-0.10	32.80	
hh/vv (dB)	NaN	55.66	19.40	39.47	1014
vh/hh (dB)	NaN	-28.17	-40.54	-38.38	164.
hv/vv (dB)	NaN	-33.73	-56.04	-46.80	838.
hn_jmp (dB)				0.15	
vn_jmp (dB)				0.16	



CIFEX 2004 Data (cal/250ns+2.5/100ns-3.5/500ns: 53.0,50.0)

W2004-04-14-22-09-07 - PPMAG4, IRIG:1/0/2
 UTC: 22:09:07.30 to 23:33:22.53, Dur: 5055s
 TimeLngth: 5055.18s, TimeInt: 28ms (35.4pps)
 TimeCor=-13.0s, PPS(min,max,med): 35,36,35
 Timeint/DSPdiff(mn,min,mx):28,28,28/28,28,28
 Prof: 403 to 179551, NumProf(r/t): 35142/179148
 ProcTime/Recs: 23:15:13-23:31:45/140568-175709
 ADacqtime: 25ms; DRate: 198.4KB/s; Flags: 0, 0, 0
 Pulse: 275ns, IFilt: 5.0MHz; ppPol: HH HV VV
 TxPol: HHVV, PRF: 20 10 20 10 kHz, NoiseFlg:2,4
 Range: Delay 75m, Spacing 30m, Gates 100
 Ave. Pulses: 84, Rng/Prof Aspect@90m/s: 11.8

	Min	Max	Mean	Std	Varc%
hhN(dB)	-68.24	-64.65	-66.32	-76.33	10.0
vvN(dB)	-68.34	-64.61	-66.36	-76.32	10.1
hhL(dB)	-21.33	-5.80	-11.23	-16.88	27.2
vvL(dB)	-13.08	6.00	5.96	-5.72	6.8
ppN(m/s)	-12.97	12.33	-0.01	4.15	
ppT(m/s)	-102.5	97.40	-0.10	32.80	
hh/vv(dB)	NaN	55.66	19.40	39.47	1014
vh/hh(dB)	NaN	-28.17	-40.54	-38.38	164.
hv/vv(dB)	NaN	-33.73	-56.04	-46.80	838.
hnjmp(dB)				0.15	
vnjmp(dB)				0.16	