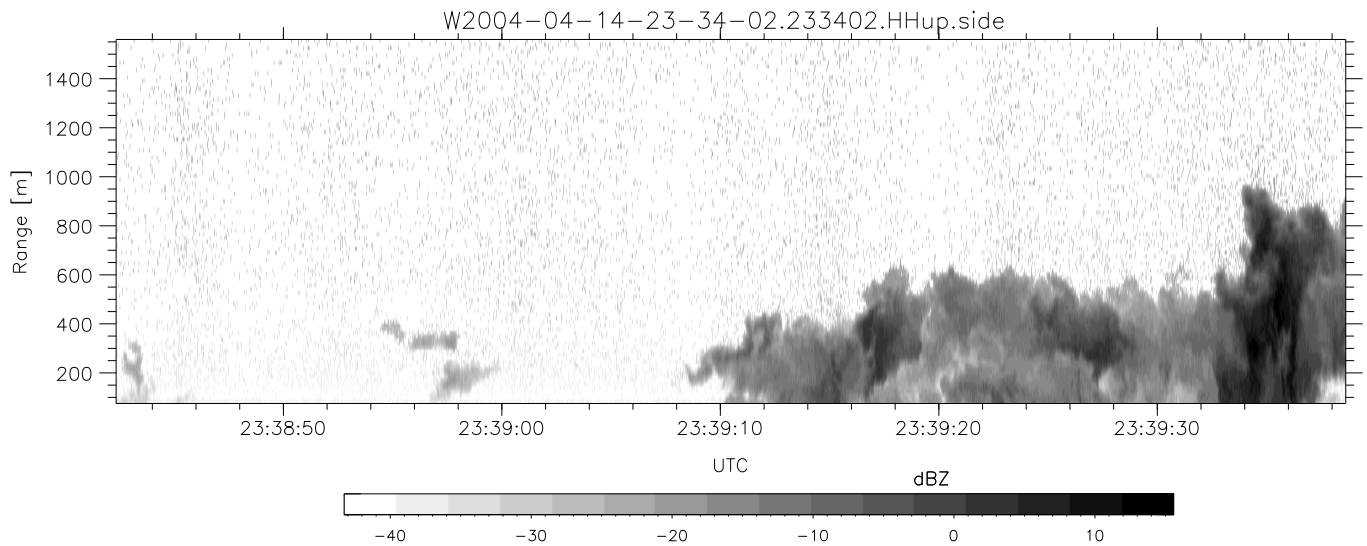
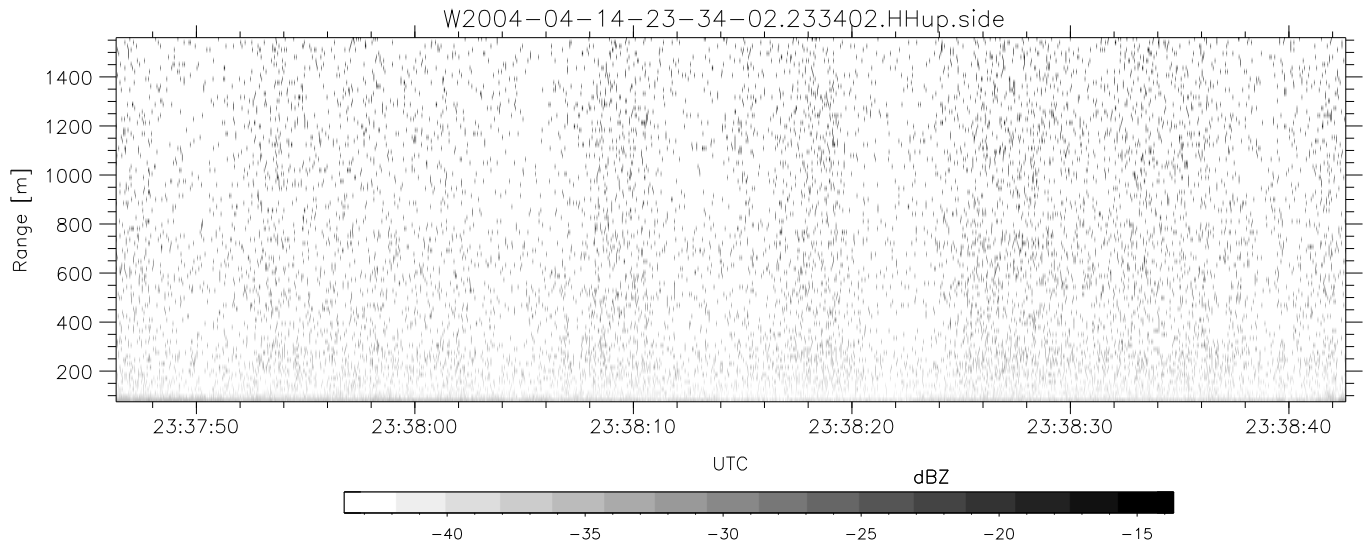
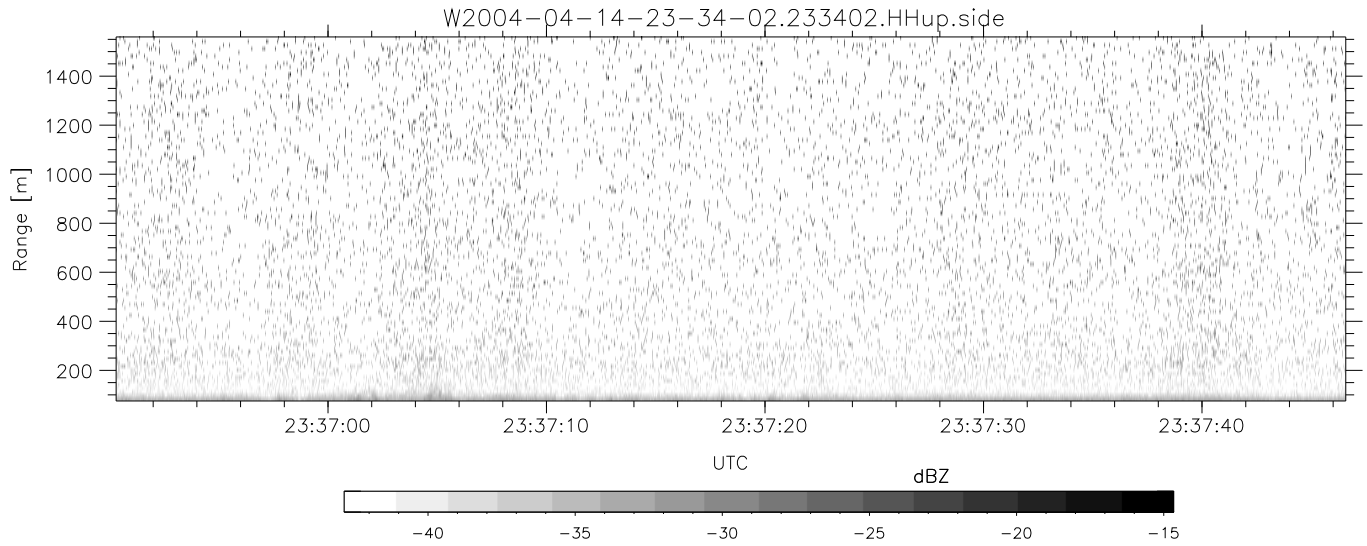


CIFEX 2004 Data (cal/250ns+2.5/100ns-3.5/500ns: 53.0,50.0)

W2004-04-14-23-34-02 - PPMAG4, IRIG:1/0/2  
 UTC: 23:34:02.27 to 00:03:14.60, Dur: 1752s  
 TimeLngth: 1752.37s, TimeInt: 28ms (35.4pps)  
 TimeCor=-13.0s, PPS(min,max,med): 35,36,35  
 Timeint/DSPdiff(mn,min,mx):28,28,28/28,28,28  
 Prof: 309 to 62431, NumProf(r/t): 17571/62122  
 ProcTime/Recs: 23:34:02-23:42:17/0-17570  
 ADacqtime: 25ms; DRate: 198.4KB/s; Flags: 0, 0, 0  
 Pulse: 275ns, IFilt: 5.0MHz; ppPol: HH HV VV  
 TxPol: HHVV, PRF: 20 10 20 10 kHz, NoiseFlg:3,2  
 Range: Delay 75m, Spacing 15m, Gates 100  
 Ave. Pulses: 84, Rng/Prof Aspect@90m/s: 5.9

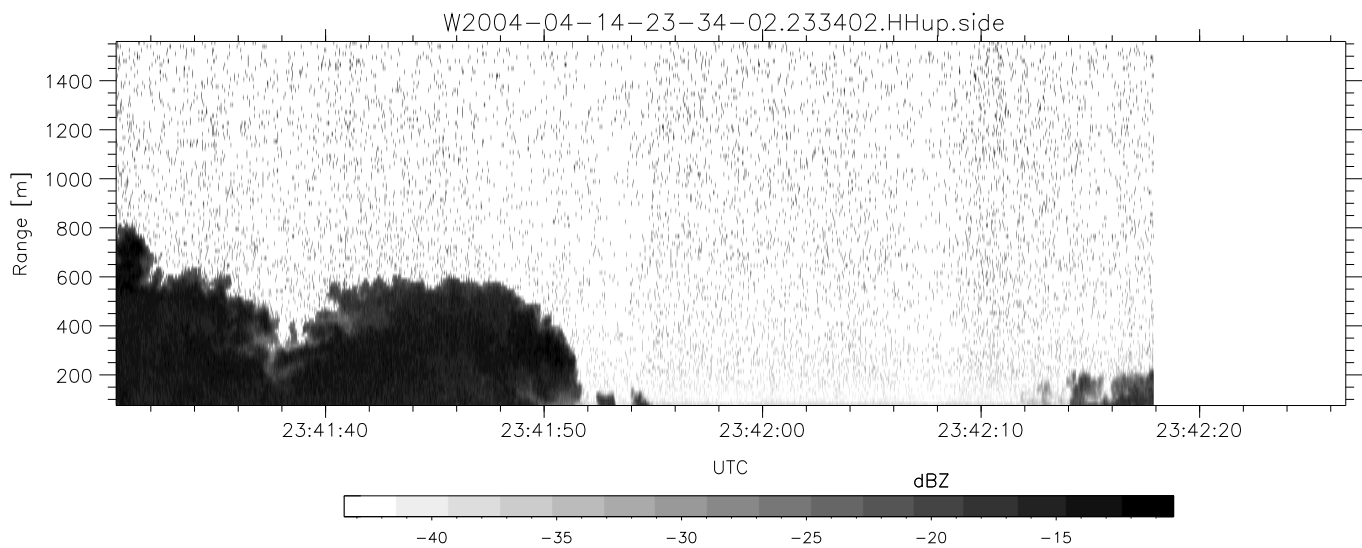
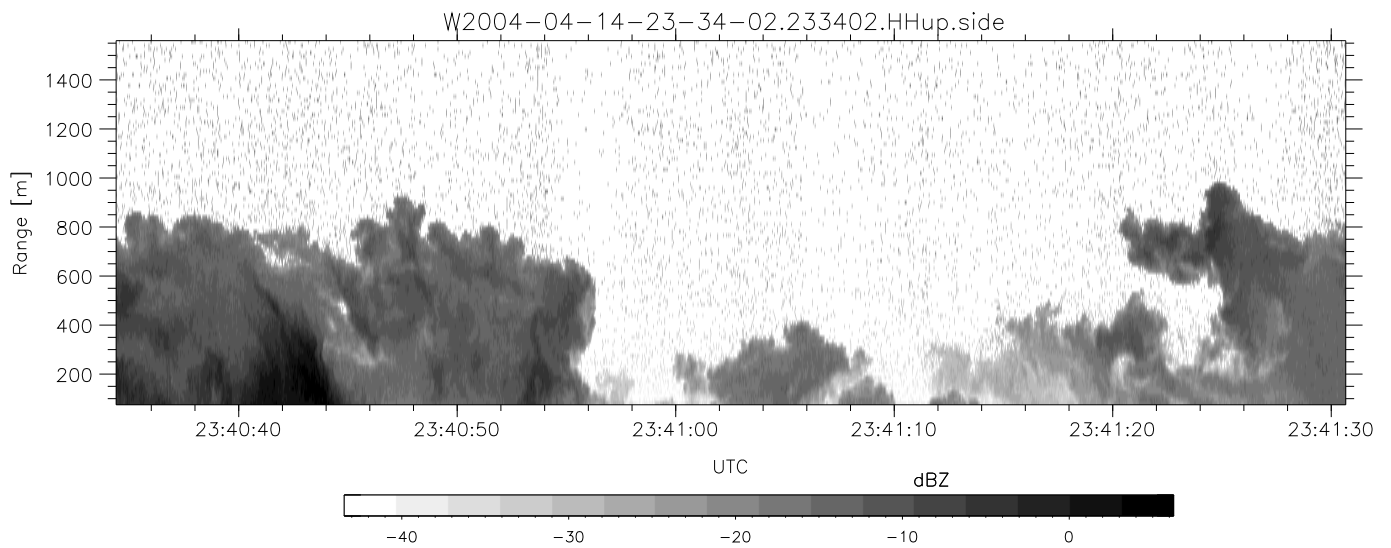
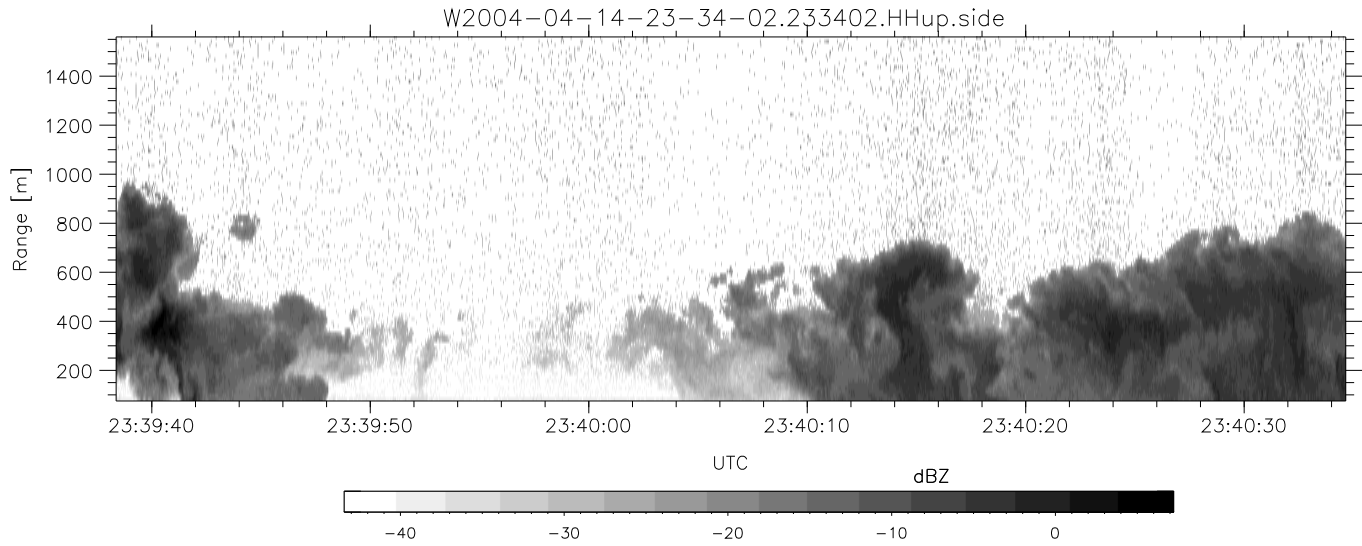
	Min	Max	Mean	Std	Varc%
hhN(dB)	-68.18	-64.72	-66.35	-76.35	10.0
vvN(dB)	-68.25	-64.68	-66.40	-76.33	10.2
hhL(dB)	-22.78	-4.94	-10.92	-13.39	56.6
vvL(dB)	-9.18	6.00	5.81	-2.52	14.7
ppN(m/s)	-12.70	12.74	-0.01	4.18	
ppT(m/s)	-100.3	100.62	-0.09	33.03	
hh/vv(dB)	NaN	65.55	19.45	40.32	1221
vh/hh(dB)	NaN	-26.79	-37.21	-36.31	123.
hv/vv(dB)	NaN	-34.14	-51.90	-45.34	452.
hh_jmp(dB)				0.16	
vv_jmp(dB)				0.16	



CIFEX 2004 Data (cal/250ns+2.5/100ns-3.5/500ns: 53.0,50.0)

W2004-04-14-23-34-02 - PPMAG4, IRIG:1/0/2  
 UTC: 23:34:02.27 to 00:03:14.60, Dur: 1752s  
 TimeLngth: 1752.37s, TimeInt: 28ms (35.4pps)  
 TimeCor=-13.0s, PPS(min,max,med): 35,36,35  
 Timeint/DSPdiff(mn,min,mx):28,28,28/28,28,28  
 Prof: 309 to 62431, NumProf(r/t): 17571/62122  
 ProcTime/Recs: 23:34:02-23:42:17/0-17570  
 ADacqtime: 25ms; DRate: 198.4KB/s; Flags: 0, 0, 0  
 Pulse: 275ns, IFilt: 5.0MHz; ppPol: HH HV VV  
 TxPol: HHVV, PRF: 20 10 20 10 kHz, NoiseFlg:3,2  
 Range: Delay 75m, Spacing 15m, Gates 100  
 Ave. Pulses: 84, Rng/Prof Aspect@90m/s: 5.9

	Min	Max	Mean	Std	Varc%
hhN(dB)	-68.18	-64.72	-66.35	-76.35	10.0
vvN(dB)	-68.25	-64.68	-66.40	-76.33	10.2
hhL(dB)	-22.78	-4.94	-10.92	-13.39	56.6
vvL(dB)	-9.18	6.00	5.81	-2.52	14.7
ppN(m/s)	-12.70	12.74	-0.01	4.18	
ppT(m/s)	-100.3	100.62	-0.09	33.03	
hh/vv(dB)	NaN	65.55	19.45	40.32	1221
vh/hh(dB)	NaN	-26.79	-37.21	-36.31	123.
hv/vv(dB)	NaN	-34.14	-51.90	-45.34	452.
hh_jmp(dB)				0.16	
vv_jmp(dB)				0.16	



CIFEX 2004 Data (cal/250ns+2.5/100ns-3.5/500ns: 53.0,50.0)

W2004-04-14-23-34-02 - PPMAG4, IRIG:1/0/2  
 UTC: 23:34:02.27 to 00:03:14.60, Dur: 1752s  
 TimeLngth: 1752.37s, TimeInt: 28ms (35.4pps)  
 TimeCor=-13.0s, PPS(min,max,med): 35,36,35  
 Timeint/DSPdiff(mn,min,mx):28,28,28/28,28,28  
 Prof: 309 to 62431, NumProf(r/t): 17571/62122  
 ProcTime/Recs: 23:34:02-23:42:17/0-17570  
 ADacqtime: 25ms; DRate: 198.4KB/s; Flags: 0, 0, 0  
 Pulse: 275ns, IFfilt: 5.0MHz; ppPol: HH HV VV  
 TxPol: HHVV, PRF: 20 10 20 10 kHz, Noiseflg:3,2  
 Range: Delay 75m, Spacing 15m, Gates 100  
 Ave. Pulses: 84, Rng/Prof Aspect@90m/s: 5.9

	Min	Max	Mean	Std	Varc%
hhN (dB)	-68.18	-64.72	-66.35	-76.35	10.0
vvN (dB)	-68.25	-64.68	-66.40	-76.33	10.2
hhL (dB)	-22.78	-4.94	-10.92	-13.39	56.6
vvL (dB)	-9.18	6.00	5.81	-2.52	14.7
ppN (m/s)	-12.70	12.74	-0.01	4.18	
ppT (m/s)	-100.3	100.62	-0.09	33.03	
hh/vv (dB)	NaN	65.55	19.45	40.32	1221
vh/hh (dB)	NaN	-26.79	-37.21	-36.31	123.
hv/vv (dB)	NaN	-34.14	-51.90	-45.34	452.
hnjmp (dB)				0.16	
vnjmp (dB)				0.16	