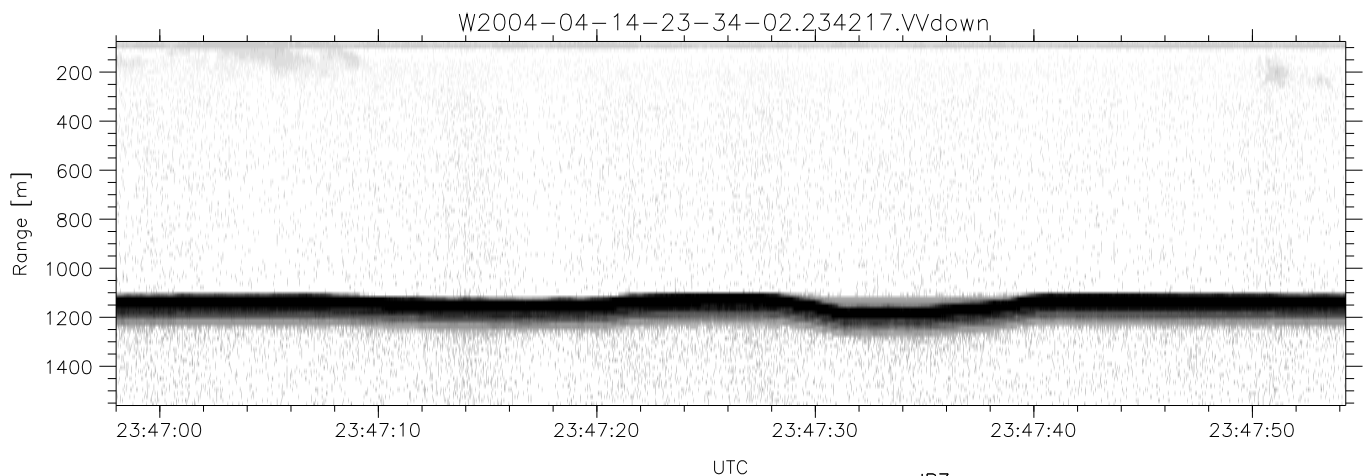
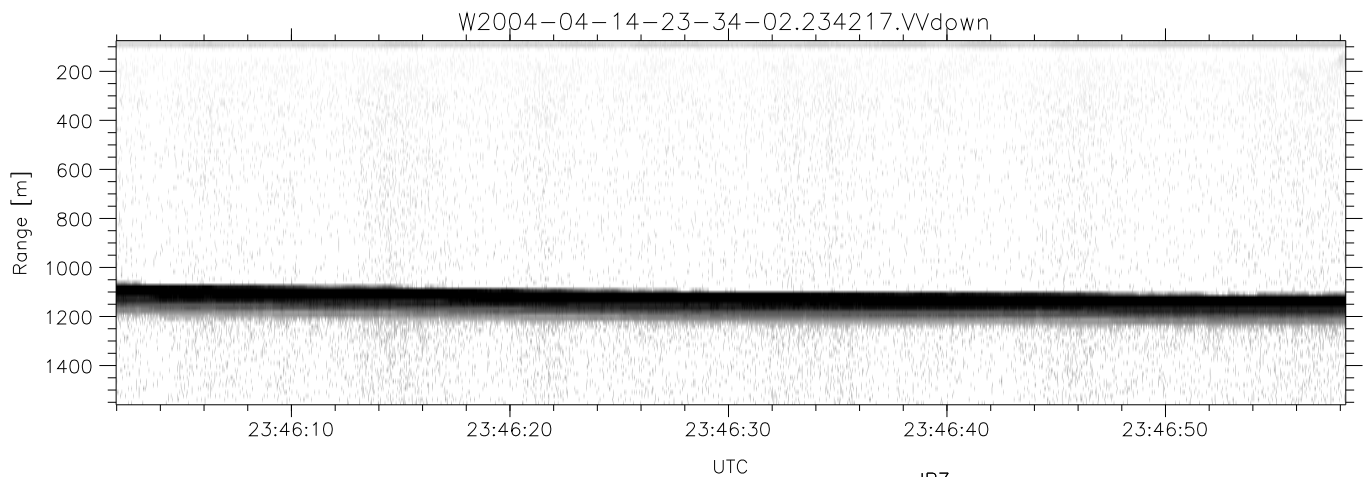
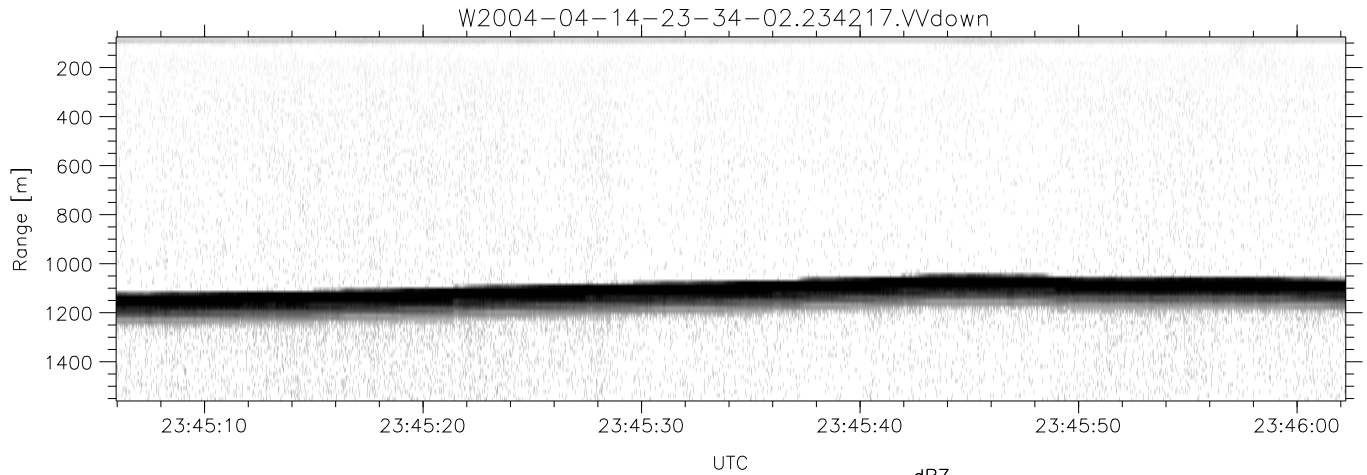


CIFEX 2004 Data (cal/250ns+2.5/100ns-3.5/500ns: 53.0,50.0)

W2004-04-14-23-34-02 - PPMAG4, IRIG:1/0/2  
 UTC: 23:34:02.27 to 00:03:14.60, Dur: 1752s  
 TimeLngth: 1752.37s, TimeInt: 28ms (35.4pps)  
 TimeCor=-13.0s, PPS(min,max,med): 35,36,35  
 Timeint/DSPdiff(mn,min,mx):28,28,28/28,28,28  
 Prof: 309 to 62431, NumProf(r/t): 17571/62122  
 ProcTime/Recs: 23:42:17-23:50:33/17571-35141  
 ADacqtime: 25ms; DRate: 198.4KB/s; Flags: 0, 0, 0  
 Pulse: 275ns, IFfilt: 5.0MHz; ppPol: HH HV VV  
 TxPol: HHVV, PRF: 20 10 20 10 kHz, NoiseFlg:4,1  
 Range: Delay 75m, Spacing 15m, Gates 100  
 Ave. Pulses: 84, Rng/Prof Aspect@90m/s: 5.9

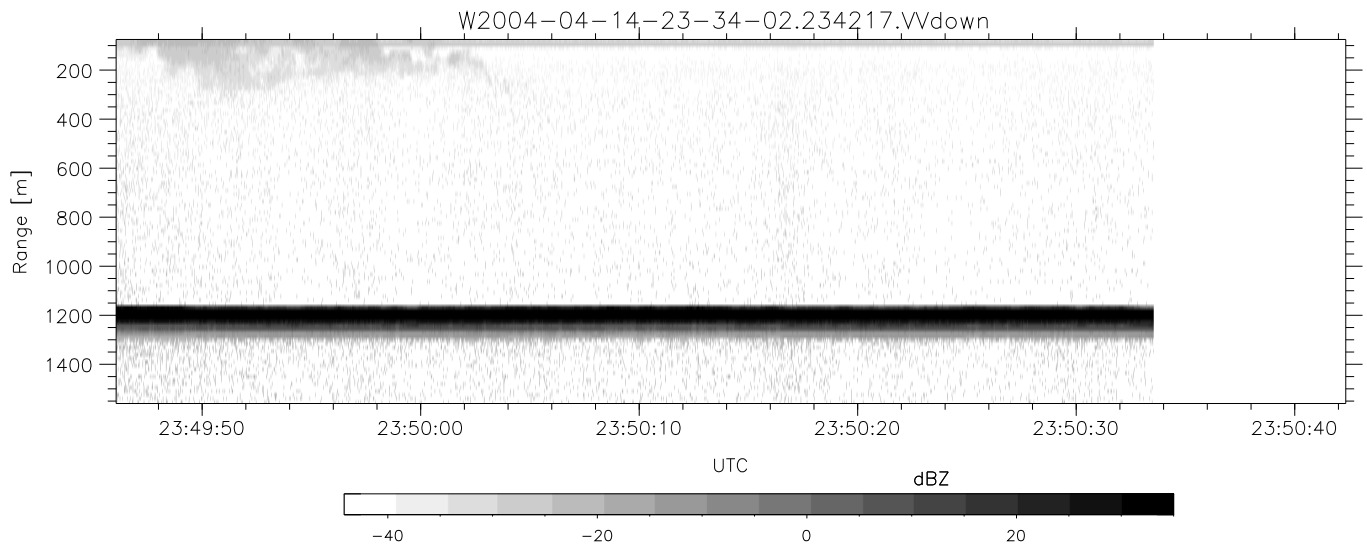
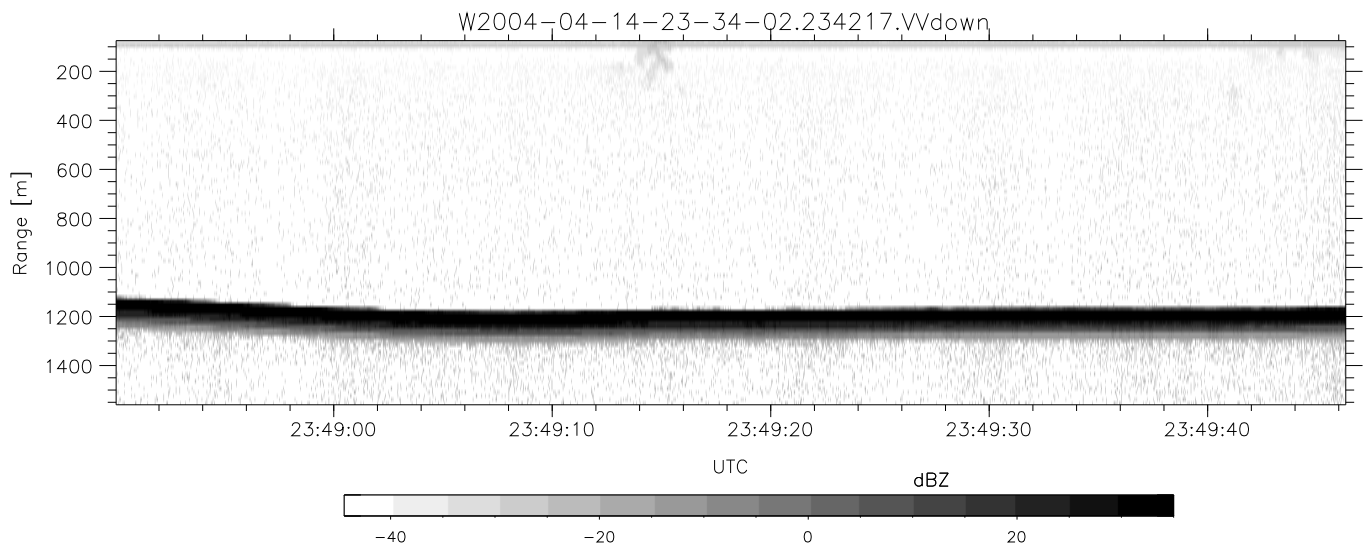
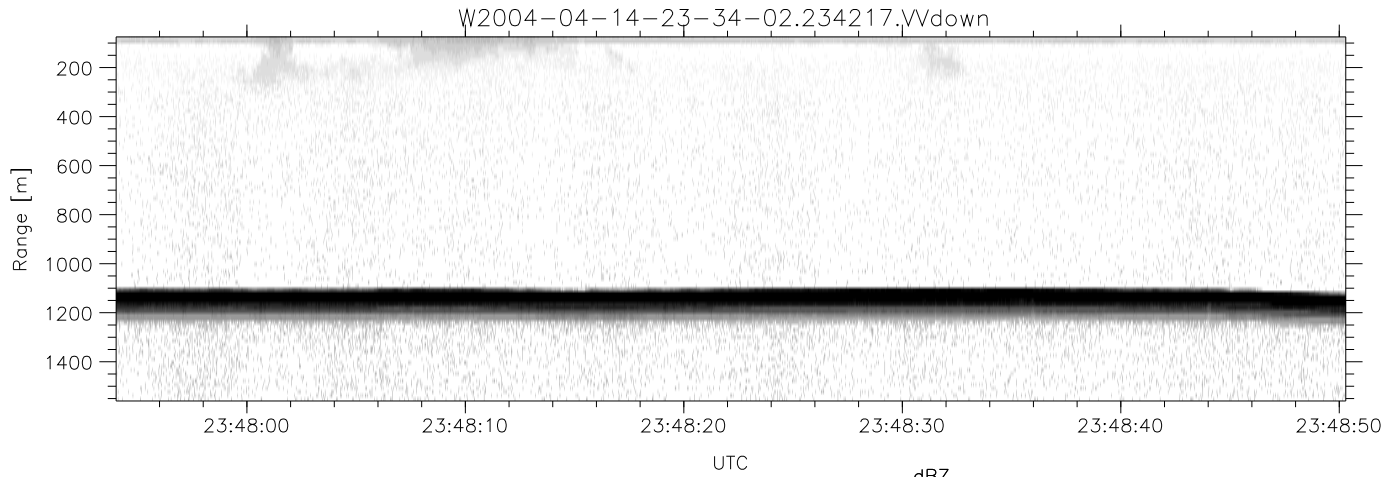
	Min	Max	Mean	Std	Varc%
hhN (dB)	-68.19	-64.52	-66.40	-76.40	10.0
vvN (dB)	-68.53	-64.85	-66.46	-76.46	10.0
hhL (dB)	-22.46	-0.51	-3.05	-6.35	46.9
vvL (dB)	-10.70	6.00	5.82	-4.13	10.1
ppN (m/s)	-12.61	12.26	-0.07	4.20	
ppT (m/s)	-99.66	96.85	-0.53	33.16	
hh/vv (dB)	NaN	50.18	15.47	32.08	4577
vh/hh (dB)	-99	-99	-99	-99	-99
hv/vv (dB)	NaN	-35.50	-60.29	-48.27	1592
hn_jmp (dB)			-0.14		
vn_jmp (dB)			-0.16		



CIFEX 2004 Data (cal/250ns+2.5/100ns-3.5/500ns: 53.0,50.0)

W2004-04-14-23-34-02 - PPMAG4, IRIG:1/0/2  
 UTC: 23:34:02.27 to 00:03:14.60, Dur: 1752s  
 TimeLngth: 1752.37s, TimeInt: 28ms (35.4pps)  
 TimeCor=-13.0s, PPS(min,max,med): 35,36,35  
 Timeint/DSPdiff(mn,min,mx):28,28,28/28,28,28  
 Prof: 309 to 62431, NumProf(r/t): 17571/62122  
 ProcTime/Recs: 23:42:17-23:50:33/17571-35141  
 ADacqtime: 25ms; DRate: 198.4KB/s; Flags: 0, 0, 0  
 Pulse: 275ns, IFfilt: 5.0MHz; ppPol: HH HV VV  
 TxPol: HHVV, PRF: 20 10 20 10 kHz, Noiseflg:4,1  
 Range: Delay 75m, Spacing 15m, Gates 100  
 Ave. Pulses: 84, Rng/Prof Aspect@90m/s: 5.9

	Min	Max	Mean	Std	Varc%
hhN (dB)	-68.19	-64.52	-66.40	-76.40	10.0
vvN (dB)	-68.53	-64.85	-66.46	-76.46	10.0
hhL (dB)	-22.46	-0.51	-3.05	-6.35	46.9
vvL (dB)	-10.70	6.00	5.82	-4.13	10.1
ppN (m/s)	-12.61	12.26	-0.07	4.20	
ppT (m/s)	-99.66	96.85	-0.53	33.16	
hh/vv (dB)	NaN	50.18	15.47	32.08	4577
vh/hh (dB)	-99	-99	-99	-99	-99
hv/vv (dB)	NaN	-35.50	-60.29	-48.27	1592
hnjmp (dB)			-0.14		
vnjmp (dB)			-0.16		



CIFEX 2004 Data (cal/250ns+2.5/100ns-3.5/500ns: 53.0,50.0)

W2004-04-14-23-34-02 - PPMAG4, IRIG:1/0/2  
 UTC: 23:34:02.27 to 00:03:14.60, Dur: 1752s  
 TimeLngth: 1752.37s, TimeInt: 28ms (35.4pps)  
 TimeCor=-13.0s, PPS(min,max,med): 35,36,35  
 Timeint/DSPdiff(mn,min,mx):28,28,28/28,28,28  
 Prof: 309 to 62431, NumProf(r/t): 17571/62122  
 ProcTime/Recs: 23:42:17-23:50:33/17571-35141  
 ADacqtime: 25ms; DRate: 198.4KB/s; Flags: 0, 0, 0  
 Pulse: 275ns, IFilt: 5.0MHz; ppPol: HH HV VV  
 TxPol: HHVV, PRF: 20 10 20 10 kHz, NoiseFlg:4,1  
 Range: Delay 75m, Spacing 15m, Gates 100  
 Ave. Pulses: 84, Rng/Prof Aspect@90m/s: 5.9

	Min	Max	Mean	Std	Varc%
hhN (dB)	-68.19	-64.52	-66.40	-76.40	10.0
vvN (dB)	-68.53	-64.85	-66.46	-76.46	10.0
hhL (dB)	-22.46	-0.51	-3.05	-6.35	46.9
vvL (dB)	-10.70	6.00	5.82	-4.13	10.1
ppN (m/s)	-12.61	12.26	-0.07	4.20	
ppT (m/s)	-99.66	96.85	-0.53	33.16	
hh/vv (dB)	NaN	50.18	15.47	32.08	4577
vh/hh (dB)	-99	-99	-99	-99	-99
hv/vv (dB)	NaN	-35.50	-60.29	-48.27	1592
hn_jmp (dB)			-0.14		
vn_jmp (dB)			-0.16		