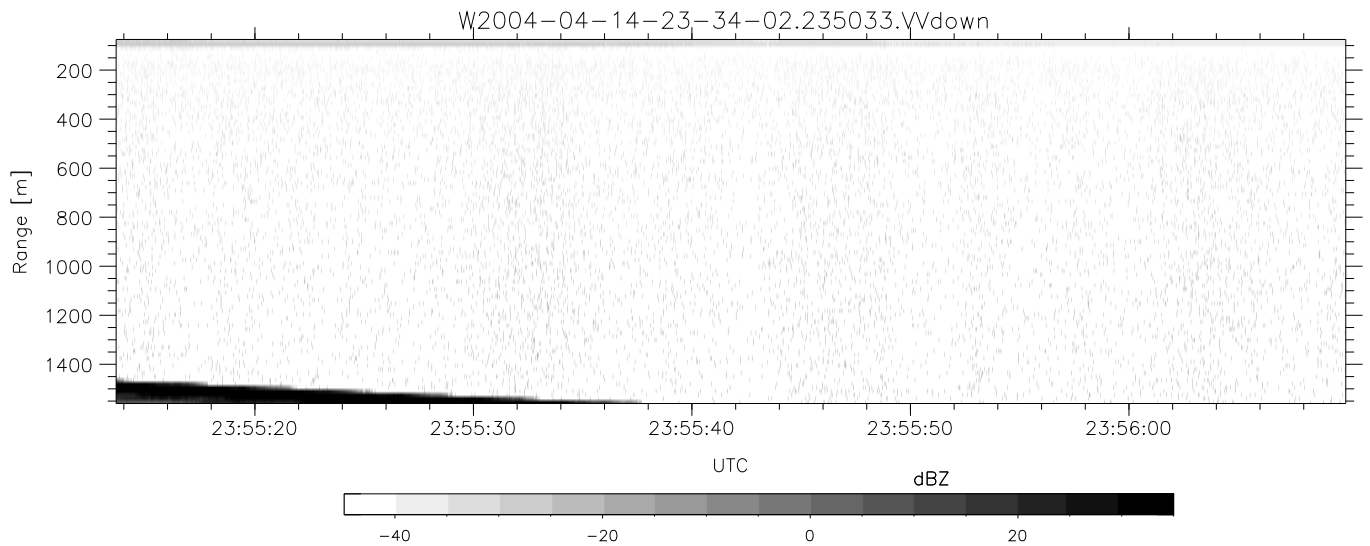
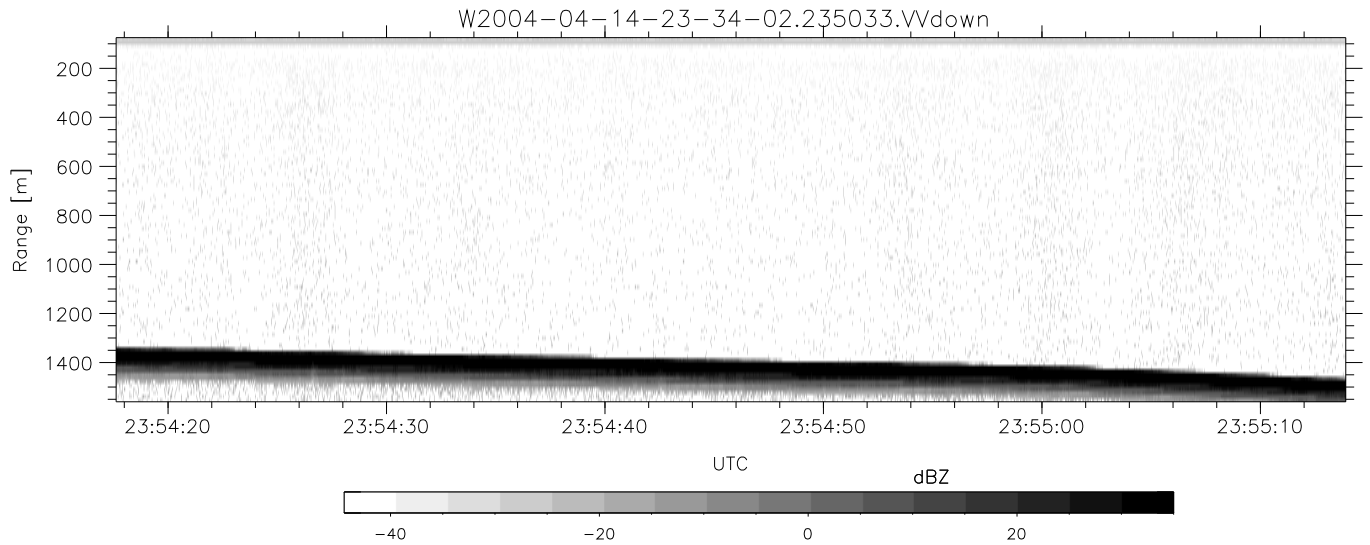
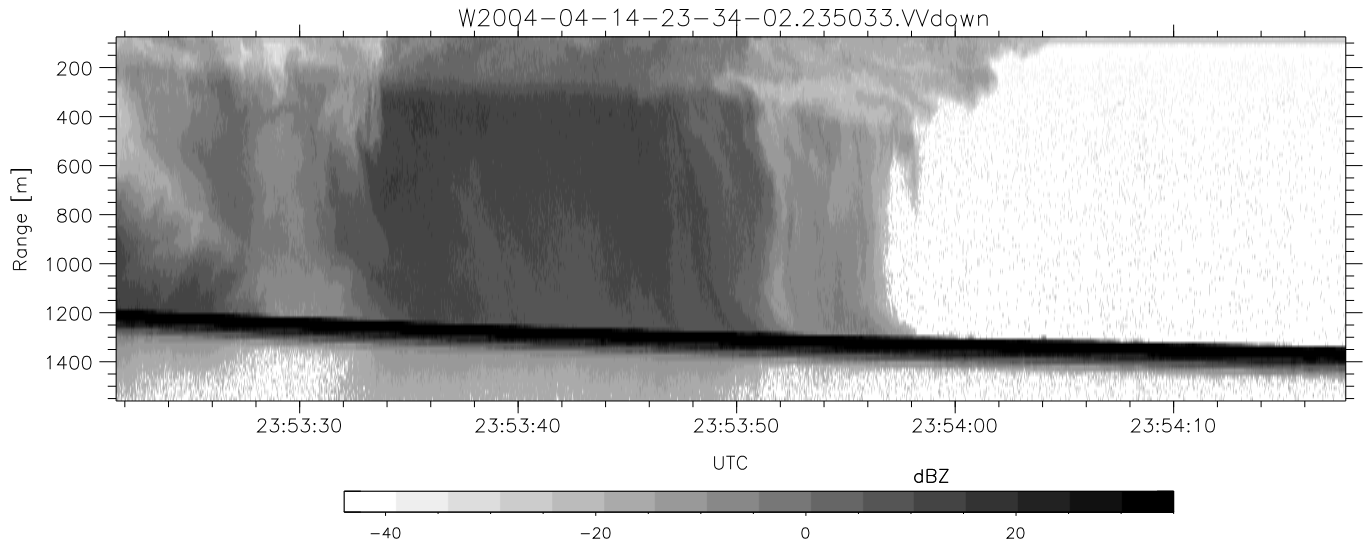


CIFEX 2004 Data (cal/250ns+2.5/100ns-3.5/500ns: 53.0,50.0)

W2004-04-14-23-34-02 - PPMAG4, IRIG:1/0/2  
 UTC: 23:34:02.27 to 00:03:14.60, Dur: 1752s  
 TimeLngth: 1752.37s, TimeInt: 28ms (35.4pps)  
 TimeCor=-13.0s, PPS(min,max,med): 35,36,35  
 Timeint/DSPdiff(mn,min,mx):28,28,28/28,28,28  
 Prof: 309 to 62431, NumProf(r/t): 17571/62122  
 ProcTime/Recs: 23:50:33-23:58:49/35142-52712  
 ADacqtime: 25ms; DRate: 198.4KB/s; Flags: 0, 0, 0  
 Pulse: 275ns, IFilt: 5.0MHz; ppPol: HH HV VV  
 TxPol: HHVV, PRF: 20 10 20 10 kHz, NoiseFlg:4,2  
 Range: Delay 75m, Spacing 15m, Gates 100  
 Ave. Pulses: 84, Rng/Prof Aspect@90m/s: 5.9

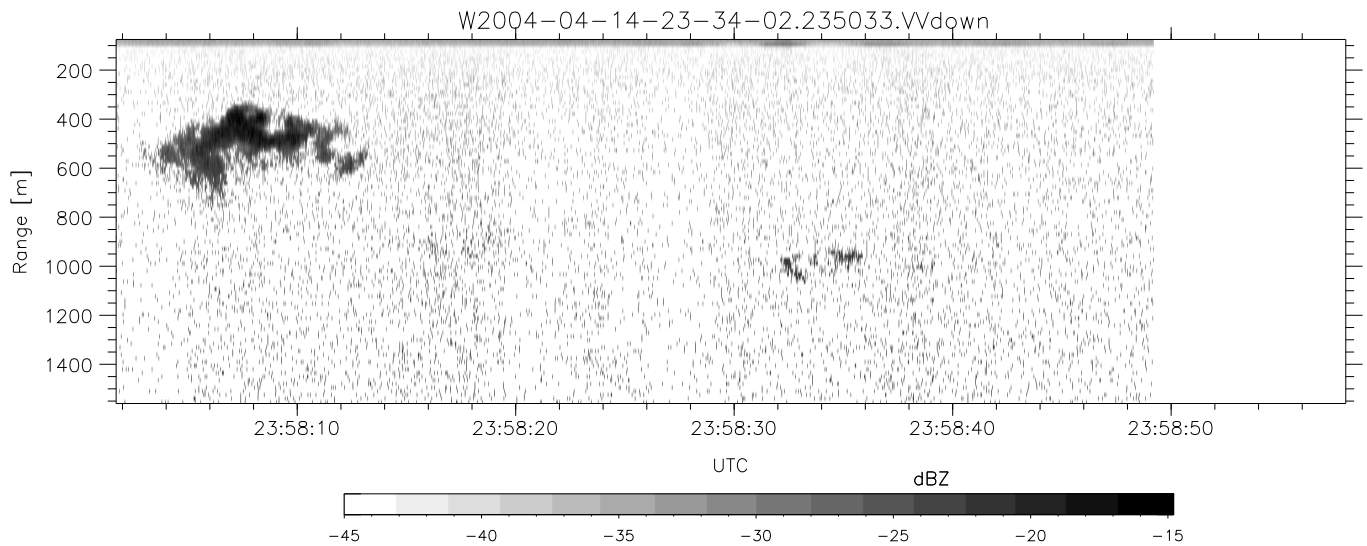
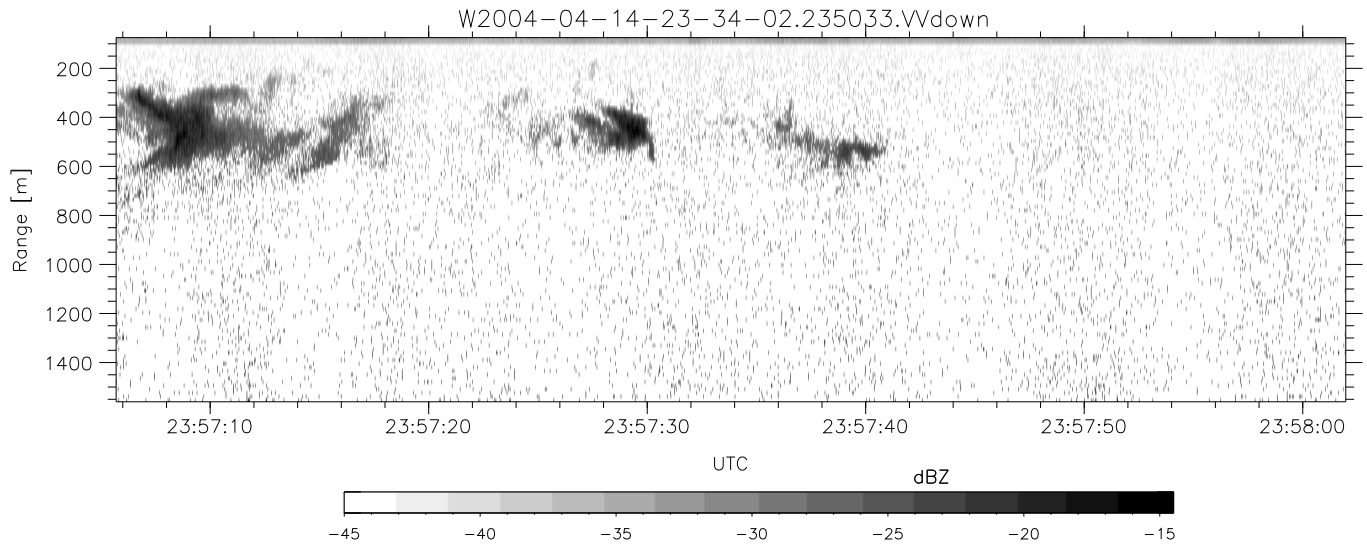
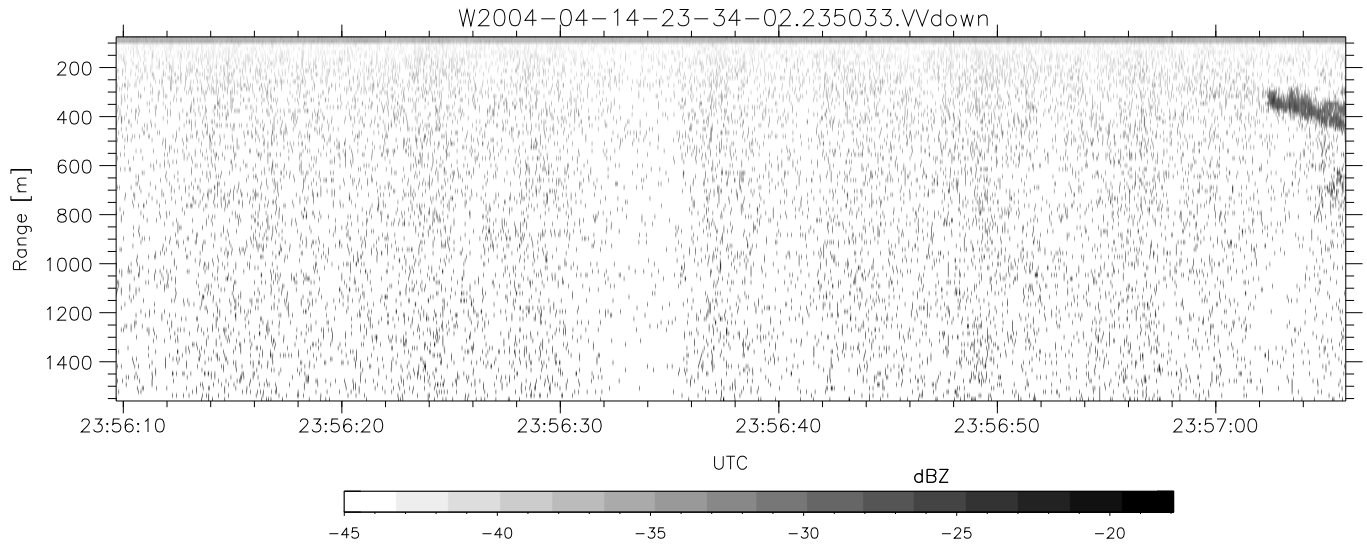
	Min	Max	Mean	Std	Varc%
hhN (dB)	-68.13	-64.85	-66.42	-76.41	10.0
vvN (dB)	-68.32	-64.93	-66.47	-76.39	10.2
hhL (dB)	-17.26	-1.45	-5.73	-6.71	79.8
vvL (dB)	-6.72	6.00	4.27	2.07	60.3
ppN (m/s)	-12.41	12.52	-0.04	4.16	
ppT (m/s)	-98.05	98.95	-0.31	32.90	
hh/vv (dB)	NaN	49.88	9.17	29.40	1053
vh/hh (dB)	NaN	-27.73	-37.87	-37.25	115.
hv/vv (dB)	NaN	-33.92	-48.93	-44.49	278.
hn_jmp (dB)			0.15		
vn_jmp (dB)			0.16		



CIFEX 2004 Data (cal/250ns+2.5/100ns-3.5/500ns: 53.0,50.0)

W2004-04-14-23-34-02 - PPMAG4, IRIG:1/0/2  
 UTC: 23:34:02.27 to 00:03:14.60, Dur: 1752s  
 TimeLngth: 1752.37s, TimeInt: 28ms (35.4pps)  
 TimeCor=-13.0s, PPS(min,max,med): 35,36,35  
 Timeint/DSPdiff(mn,min,mx):28,28,28/28,28,28  
 Prof: 309 to 62431, NumProf(r/t): 17571/62122  
 ProcTime/Recs: 23:50:33-23:58:49/35142-52712  
 ADacqtime: 25ms; DRate: 198.4KB/s; Flags: 0, 0, 0  
 Pulse: 275ns, IFfilt: 5.0MHz; ppPol: HH HV VV  
 TxPol: HHVV, PRF: 20 10 20 10 kHz, Noiseflg:4,2  
 Range: Delay 75m, Spacing 15m, Gates 100  
 Ave. Pulses: 84, Rng/Prof Aspect@90m/s: 5.9

	Min	Max	Mean	Std	Varc%
hhN (dB)	-68.13	-64.85	-66.42	-76.41	10.0
vvN (dB)	-68.32	-64.93	-66.47	-76.39	10.2
hhL (dB)	-17.26	-1.45	-5.73	-6.71	79.8
vvL (dB)	-6.72	6.00	4.27	2.07	60.3
ppN (m/s)	-12.41	12.52	-0.04	4.16	
ppT (m/s)	-98.05	98.95	-0.31	32.90	
hh/vv (dB)	NaN	49.88	9.17	29.40	1053
vh/hh (dB)	NaN	-27.73	-37.87	-37.25	115.
hv/vv (dB)	NaN	-33.92	-48.93	-44.49	278.
hn_jmp (dB)				0.15	
vn_jmp (dB)				0.16	



CIFEX 2004 Data (cal/250ns+2.5/100ns-3.5/500ns: 53.0,50.0)

W2004-04-14-23-34-02 - PPMAG4, IRIG:1/0/2  
 UTC: 23:34:02.27 to 00:03:14.60, Dur: 1752s  
 TimeLngth: 1752.37s, TimeInt: 28ms (35.4pps)  
 TimeCor=-13.0s, PPS(min,max,med): 35,36,35  
 Timeint/DSPdiff(mn,min,mx):28,28,28/28,28,28  
 Prof: 309 to 62431, NumProf(r/t): 17571/62122  
 ProcTime/Recs: 23:50:33-23:58:49/35142-52712  
 ADacqtime: 25ms; DRate: 198.4KB/s; Flags: 0, 0, 0  
 Pulse: 275ns, IFilt: 5.0MHz; ppPol: HH HV VV  
 TxPol: HHVV, PRF: 20 10 20 10 kHz, NoiseFlg:4,2  
 Range: Delay 75m, Spacing 15m, Gates 100  
 Ave. Pulses: 84, Rng/Prof Aspect@90m/s: 5.9

	Min	Max	Mean	Std	Varc%
hhN (dB)	-68.13	-64.85	-66.42	-76.41	10.0
vvN (dB)	-68.32	-64.93	-66.47	-76.39	10.2
hhL (dB)	-17.26	-1.45	-5.73	-6.71	79.8
vvL (dB)	-6.72	6.00	4.27	2.07	60.3
ppN (m/s)	-12.41	12.52	-0.04	4.16	
ppT (m/s)	-98.05	98.95	-0.31	32.90	
hh/vv (dB)	NaN	49.88	9.17	29.40	1053
vh/hh (dB)	NaN	-27.73	-37.87	-37.25	115.
hv/vv (dB)	NaN	-33.92	-48.93	-44.49	278.
hn_jmp (dB)				0.15	
vn_jmp (dB)				0.16	