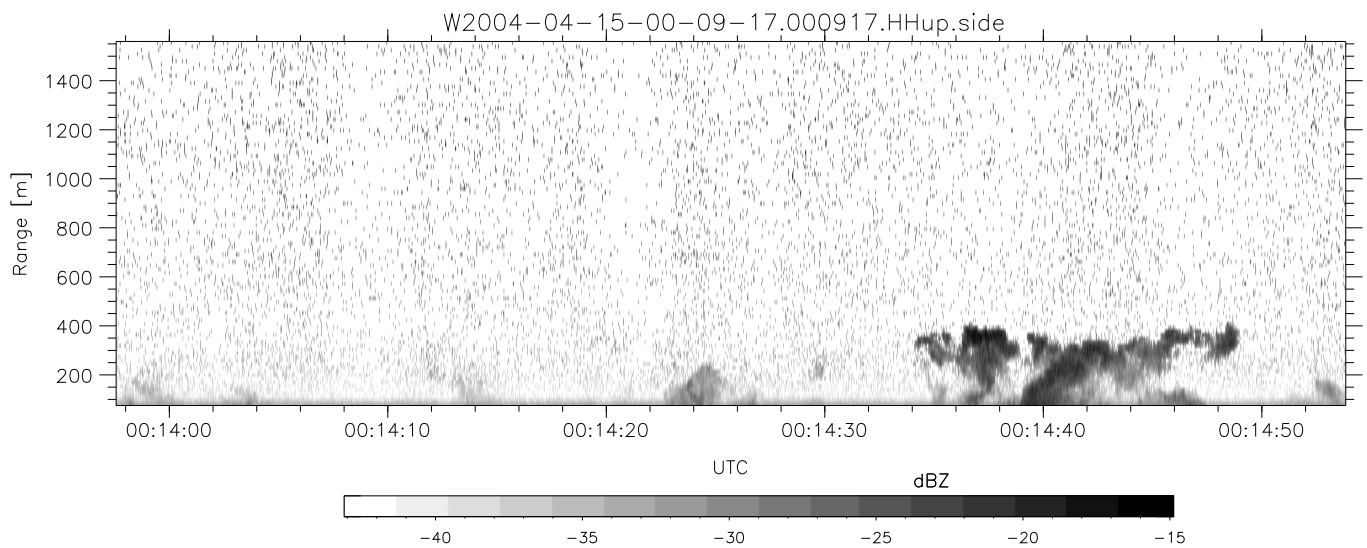
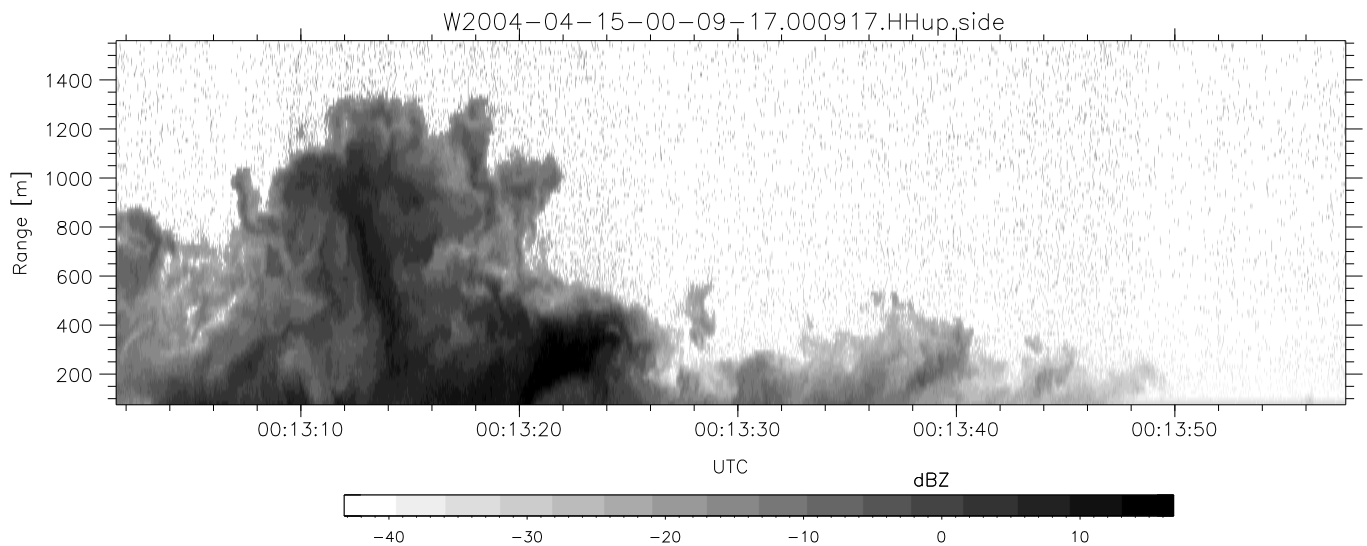
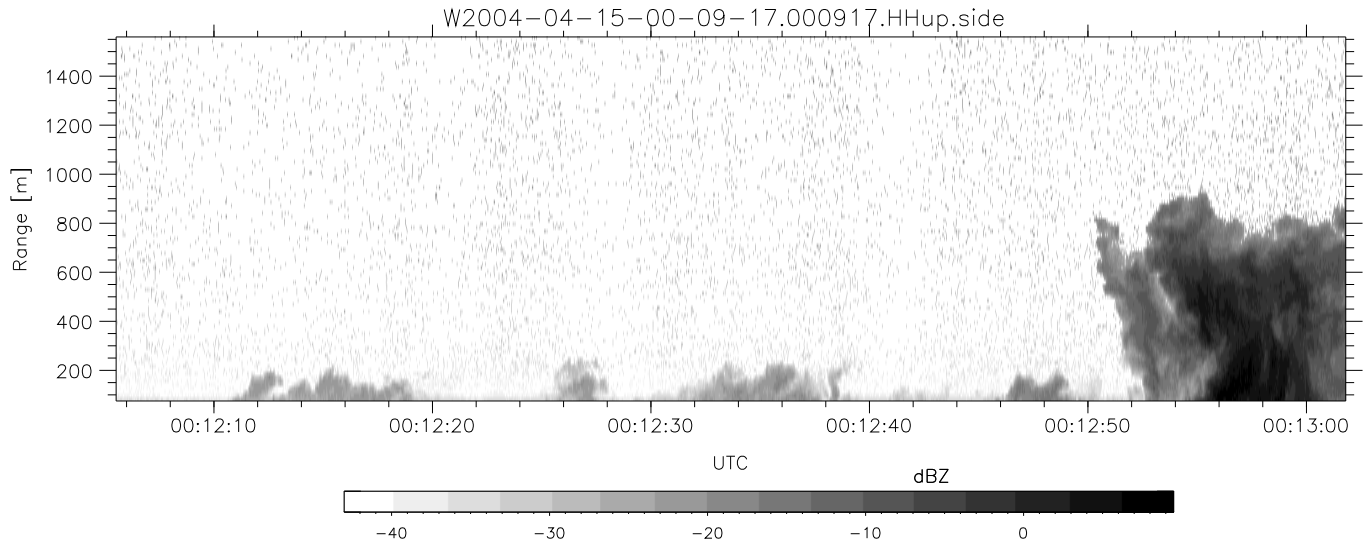


CIFEX 2004 Data (cal/250ns+2.5/100ns-3.5/500ns: 53.0,50.0)

W2004-04-15-00-09-17 - PPMAG4, IRIG:1/0/2  
 UTC: 00:09:17.48 to 00:39:25.70, Dur: 1808s  
 TimeLngth: 1808.25s, TimeInt: 28ms (35.4pps)  
 TimeCor=-13.0s, PPS(min,max,med): 35,36,35  
 Timeint/DSPdiff(mn,min,mx):28,28,28/28,28,28  
 Prof: 352 to 64455, NumProf(r/t): 17571/64103  
 ProcTime/Recs: 00:09:17-00:17:33/0-17570  
 ADacqtime: 25ms; DRate: 198.4KB/s; Flags: 0, 0, 0  
 Pulse: 275ns, IFfilt: 5.0MHz; ppPol: HH HV VV  
 TxPol: HHVV, PRF: 20 10 20 10 kHz, Noiseflg:4,2  
 Range: Delay 75m, Spacing 15m, Gates 100  
 Ave. Pulses: 84, Rng/Prof Aspect@90m/s: 5.9

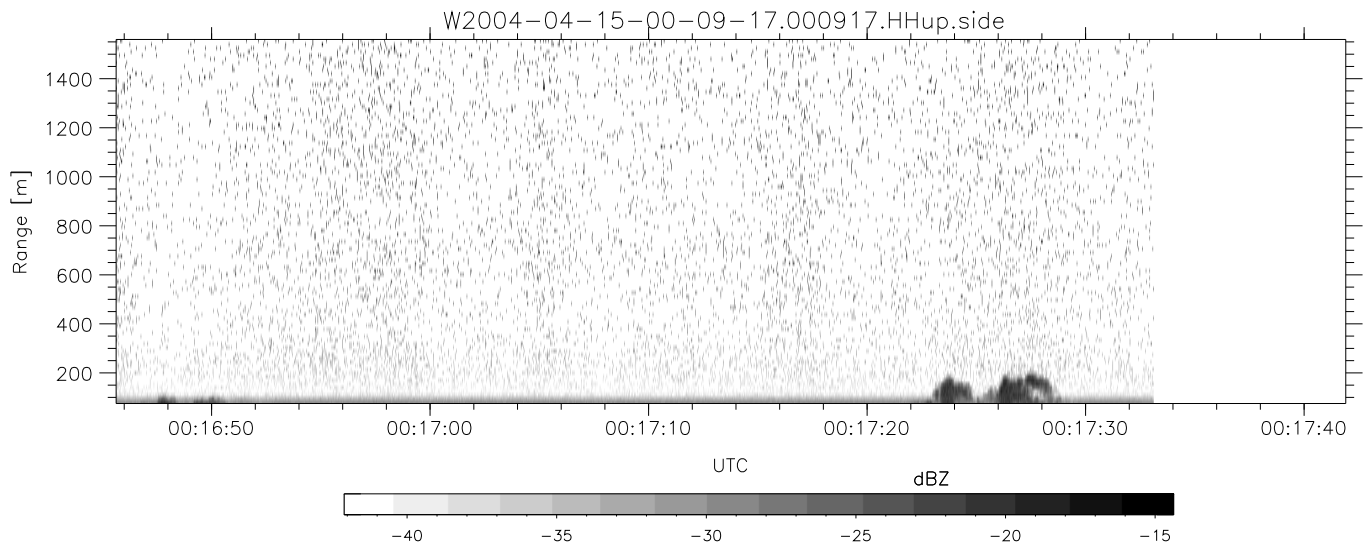
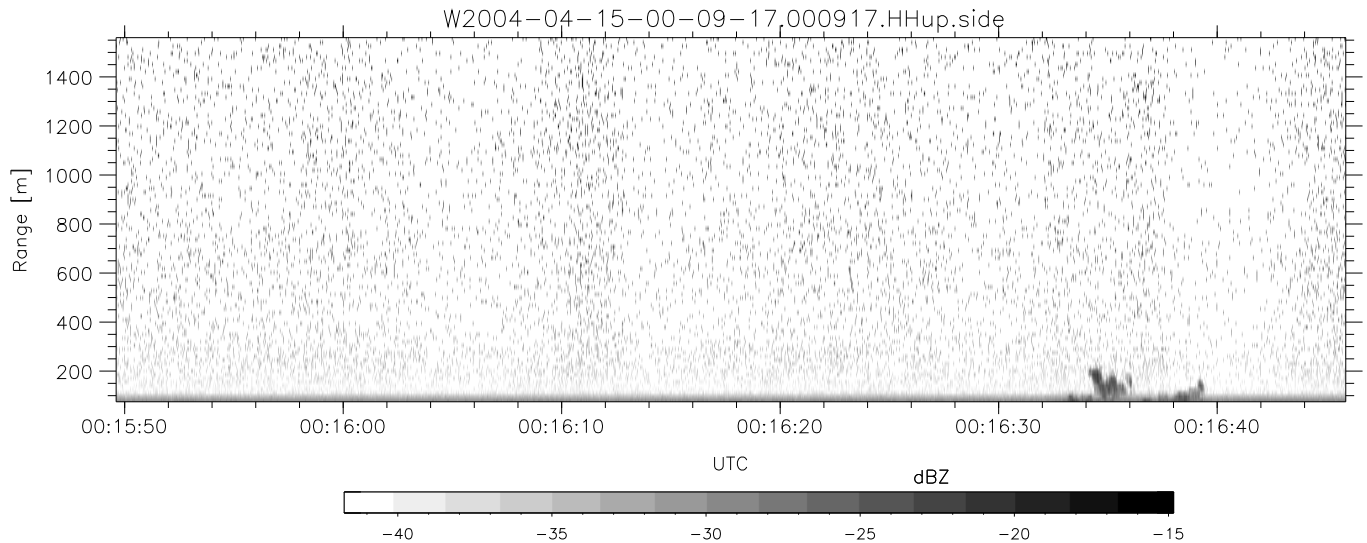
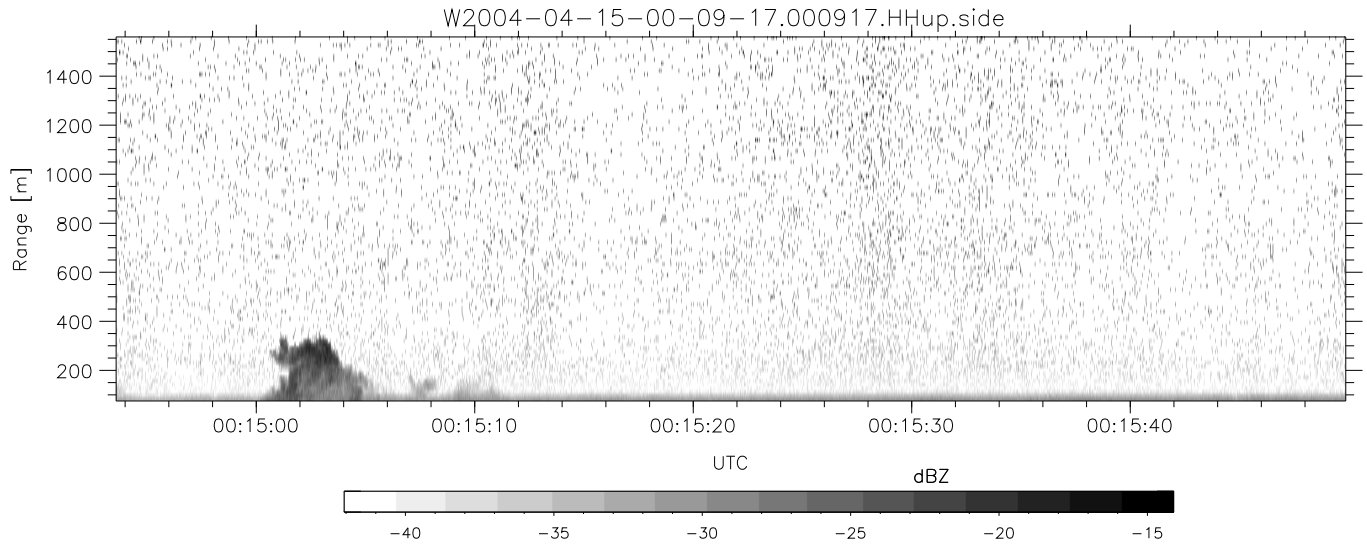
	Min	Max	Mean	Std	Varc%
hhN(dB)	-68.29	-64.67	-66.45	-76.43	10.1
vvN(dB)	-68.42	-64.87	-66.52	-76.48	10.1
hhL(dB)	-24.31	-1.60	-6.80	-7.85	78.5
vvL(dB)	-11.78	6.00	5.68	-1.75	18.1
ppN(m/s)	-12.92	12.87	-0.01	4.14	
ppT(m/s)	-102.1	101.64	-0.04	32.70	
hh/vv(dB)	NaN	47.27	5.63	23.91	6737
vh/hh(dB)	NaN	-25.33	-37.01	-36.13	122.
hv/vv(dB)	NaN	-34.62	-51.79	-45.66	410.
hnjmp(dB)			-0.15		
vnjmp(dB)			-0.15		



CIFEX 2004 Data (cal/250ns+2.5/100ns-3.5/500ns: 53.0,50.0)

W2004-04-15-00-09-17 - PPMAG4, IRIG:1/0/2  
 UTC: 00:09:17.48 to 00:39:25.70, Dur: 1808s  
 TimeLngth: 1808.25s, TimeInt: 28ms (35.4pps)  
 TimeCor=-13.0s, PPS(min,max,med): 35,36,35  
 Timeint/DSPdiff(mn,min,mx):28,28,28/28,28,28  
 Prof: 352 to 64455, NumProf(r/t): 17571/64103  
 ProcTime/Recs: 00:09:17-00:17:33/0-17570  
 ADacqtime: 25ms; DRate: 198.4KB/s; Flags: 0, 0, 0  
 Pulse: 275ns, IFfilt: 5.0MHz; ppPol: HH HV VV  
 TxPol: HHVV, PRF: 20 10 20 10 kHz, Noiseflg:4,2  
 Range: Delay 75m, Spacing 15m, Gates 100  
 Ave. Pulses: 84, Rng/Prof Aspect@90m/s: 5.9

	Min	Max	Mean	Std	Varc%
hhN(dB)	-68.29	-64.67	-66.45	-76.43	10.1
vvN(dB)	-68.42	-64.87	-66.52	-76.48	10.1
hhL(dB)	-24.31	-1.60	-6.80	-7.85	78.5
vvL(dB)	-11.78	6.00	5.68	-1.75	18.1
ppN(m/s)	-12.92	12.87	-0.01	4.14	
ppT(m/s)	-102.1	101.64	-0.04	32.70	
hh/vv(dB)	NaN	47.27	5.63	23.91	6737
vh/hh(dB)	NaN	-25.33	-37.01	-36.13	122.
hv/vv(dB)	NaN	-34.62	-51.79	-45.66	410.
hnjmp(dB)				-0.15	
vnjmp(dB)				-0.15	



CIFEX 2004 Data (cal/250ns+2.5/100ns-3.5/500ns: 53.0,50.0)

W2004-04-15-00-09-17 - PPMAG4, IRIG:1/0/2  
 UTC: 00:09:17.48 to 00:39:25.70, Dur: 1808s  
 TimeLngth: 1808.25s, TimeInt: 28ms (35.4pps)  
 TimeCor=-13.0s, PPS(min,max,med): 35,36,35  
 Timeint/DSPdiff(mn,min,mx):28,28,28/28,28,28  
 Prof: 352 to 64455, NumProf(r/t): 17571/64103  
 ProcTime/Recs: 00:09:17-00:17:33/0-17570  
 ADacqtime: 25ms; DRate: 198.4KB/s; Flags: 0, 0, 0  
 Pulse: 275ns, IFilt: 5.0MHz; ppPol: HH HV VV  
 TxPol: HHVV, PRF: 20 10 20 10 kHz, NoiseFlg:4,2  
 Range: Delay 75m, Spacing 15m, Gates 100  
 Ave. Pulses: 84, Rng/Prof Aspect@90m/s: 5.9

	Min	Max	Mean	Std	Varc%
hhN(dB)	-68.29	-64.67	-66.45	-76.43	10.1
vvN(dB)	-68.42	-64.87	-66.52	-76.48	10.1
hhL(dB)	-24.31	-1.60	-6.80	-7.85	78.5
vvL(dB)	-11.78	6.00	5.68	-1.75	18.1
ppN(m/s)	-12.92	12.87	-0.01	4.14	
ppT(m/s)	-102.1	101.64	-0.04	32.70	
hh/vv(dB)	NaN	47.27	5.63	23.91	6737
vh/hh(dB)	NaN	-25.33	-37.01	-36.13	122.
hv/vv(dB)	NaN	-34.62	-51.79	-45.66	410.
hnjmp(dB)			-0.15		
vnjmp(dB)			-0.15		