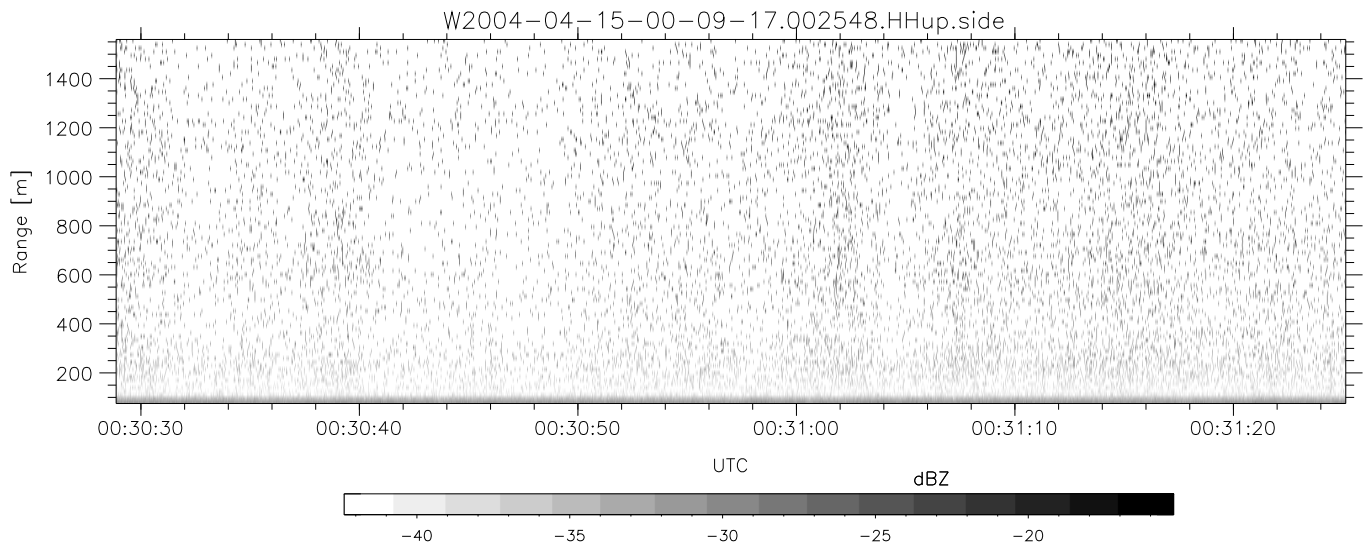
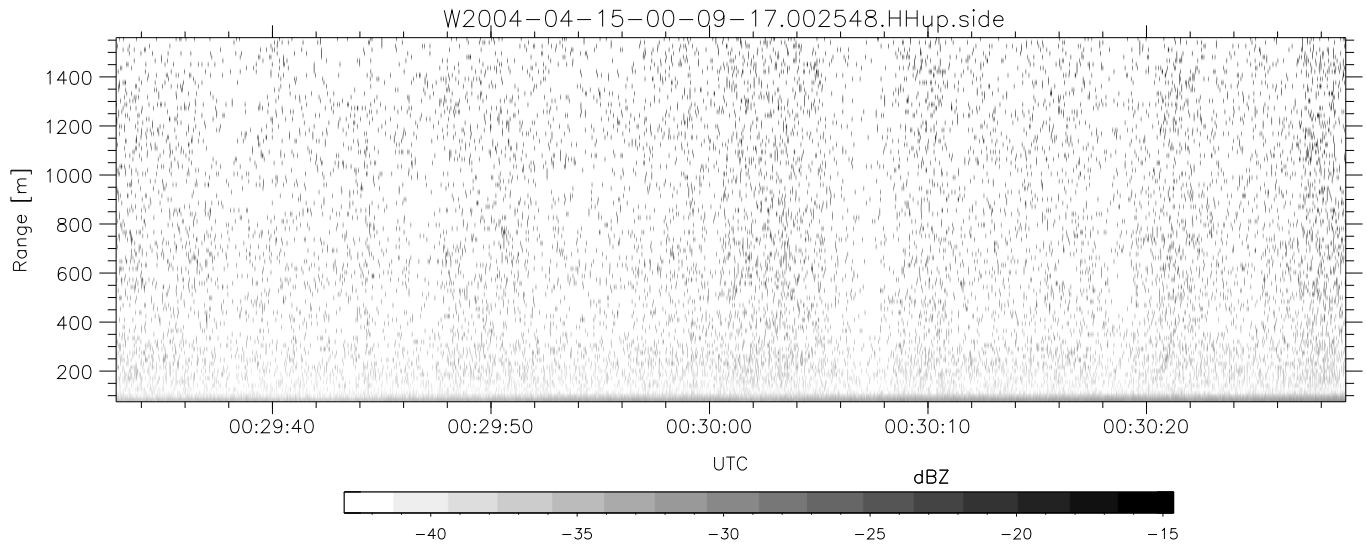
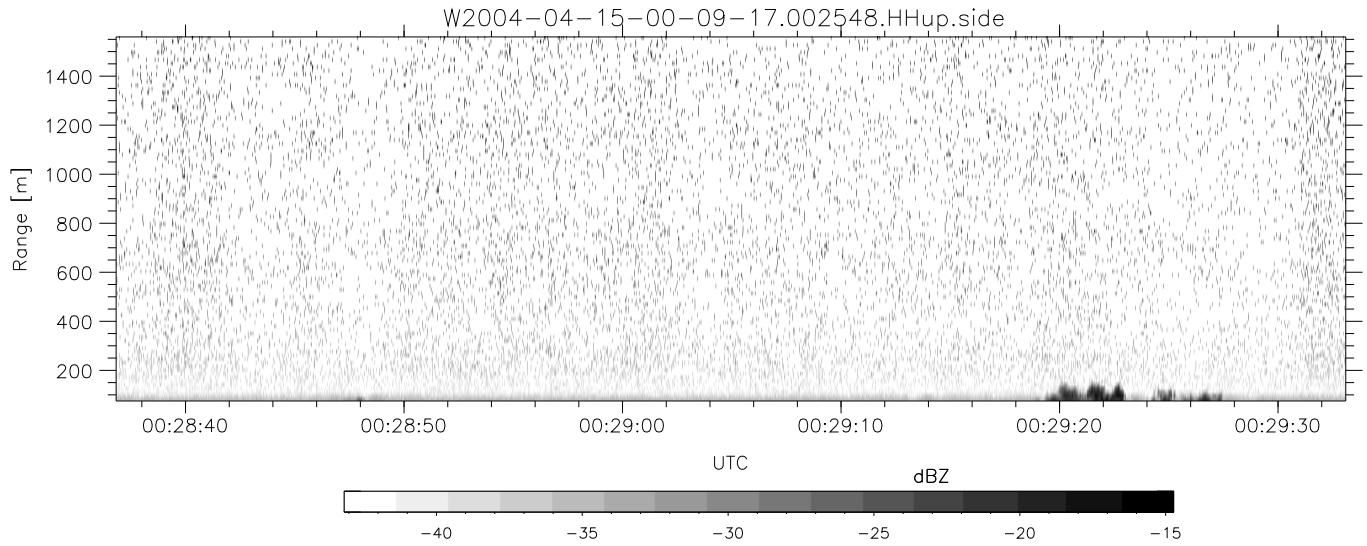


CIFEX 2004 Data (cal/250ns+2.5/100ns-3.5/500ns: 53.0,50.0)

W2004-04-15-00-09-17 - PPMAG4, IRIG:1/0/2  
 UTC: 00:09:17.48 to 00:39:25.70, Dur: 1808s  
 TimeLngth: 1808.25s, TimeInt: 28ms (35.4pps)  
 TimeCor=-13.0s, PPS(min,max,med): 35,36,35  
 Timeint/DSPdiff(mn,min,mx):28,28,34/28,28,28  
 Prof: 352 to 64455, NumProf(r/t): 17571/64103  
 ProcTime/Recs: 00:25:48-00:34:04/35142-52712  
 ADacqtime: 25ms; DRate: 198.4KB/s; Flags: 0, 0, 0  
 Pulse: 275ns, IFilt: 5.0MHz; ppPol: HH HV VV  
 TxPol: HHVV, PRF: 20 10 20 10 kHz, NoiseFlg:2,2  
 Range: Delay 75m, Spacing 15m, Gates 100  
 Ave. Pulses: 84, Rng/Prof Aspect@90m/s: 5.9

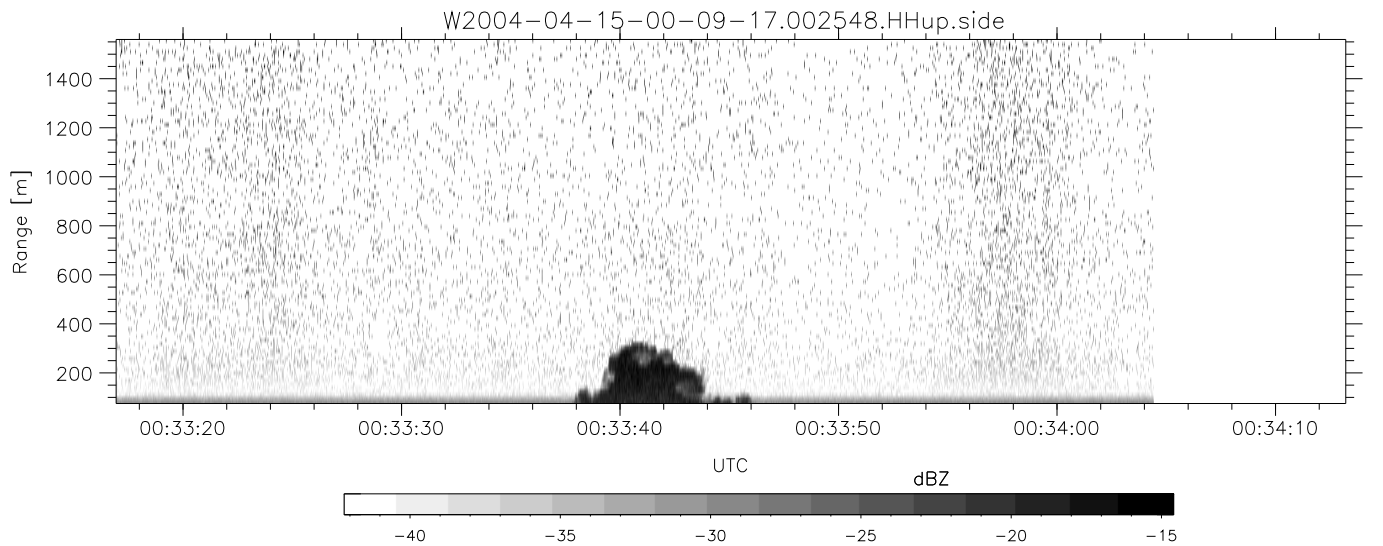
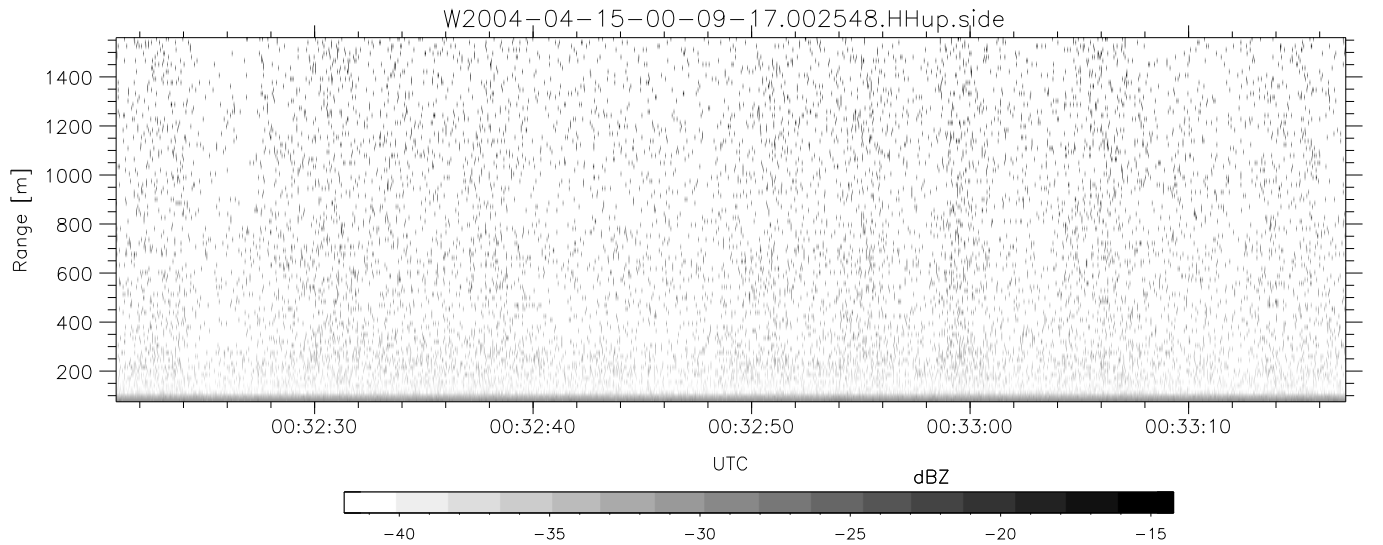
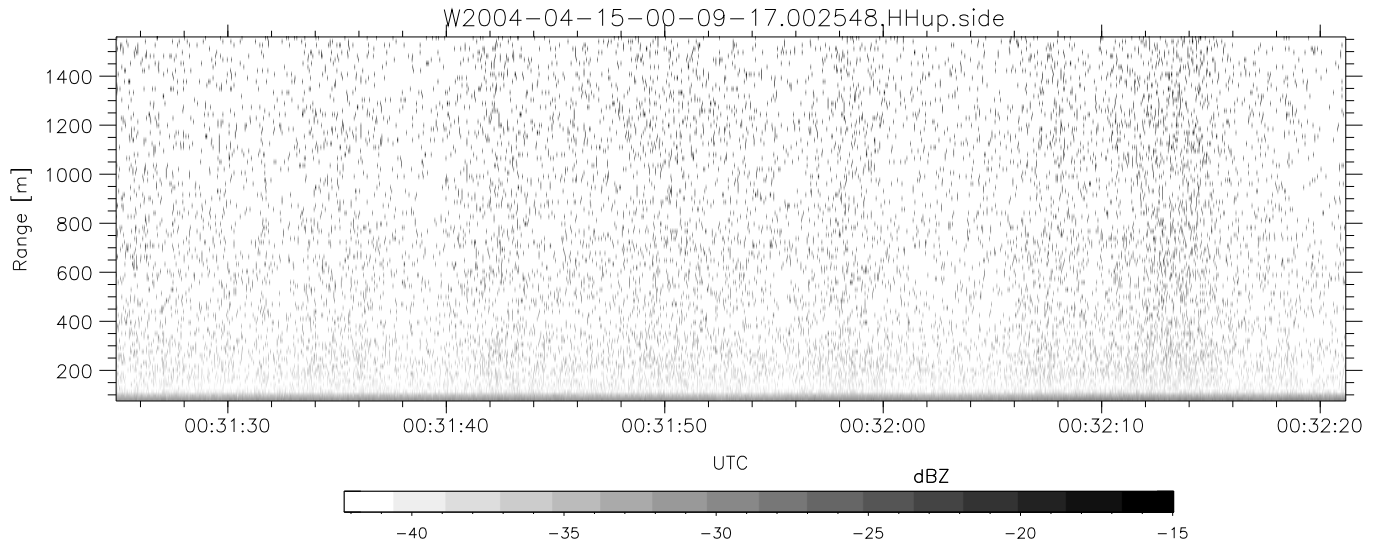
	Min	Max	Mean	Std	Varc%
hhN(dB)	-68.59	-64.65	-66.46	-76.46	10.0
vvN(dB)	-68.34	-65.03	-66.54	-76.48	10.1
hhL(dB)	-18.01	-2.08	-5.74	-8.86	48.7
vvL(dB)	-10.26	6.00	5.93	-4.23	9.6
ppN(m/s)	-12.37	12.14	-0.10	4.16	
ppT(m/s)	-97.73	95.91	-0.76	32.88	
hh/vv(dB)	NaN	36.82	8.65	18.89	1055
vh/hh(dB)	NaN	-27.64	-33.49	-35.04	69.9
hv/vv(dB)	NaN	-34.79	-61.36	-49.44	1556
hnjmp(dB)			-0.15		
vnjmp(dB)			-0.15		



CIFEX 2004 Data (cal/250ns+2.5/100ns-3.5/500ns: 53.0,50.0)

W2004-04-15-00-09-17 - PPMAG4, IRIG:1/0/2  
 UTC: 00:09:17.48 to 00:39:25.70, Dur: 1808s  
 TimeLngth: 1808.25s, TimeInt: 28ms (35.4pps)  
 TimeCor=-13.0s, PPS(min,max,med): 35,36,35  
 Timeint/DSPdiff(mn,min,mx):28,28,34/28,28,28  
 Prof: 352 to 64455, NumProf(r/t): 17571/64103  
 ProcTime/Recs: 00:25:48-00:34:04/35142-52712  
 ADacqtime: 25ms; DRate: 198.4KB/s; Flags: 0, 0, 0  
 Pulse: 275ns, IFfilt: 5.0MHz; ppPol: HH HV VV  
 TxPol: HHVV, PRF: 20 10 20 10 kHz, NoiseFlg:2,2  
 Range: Delay 75m, Spacing 15m, Gates 100  
 Ave. Pulses: 84, Rng/Prof Aspect@90m/s: 5.9

	Min	Max	Mean	Std	Varc%
hhN (dB)	-68.59	-64.65	-66.46	-76.46	10.0
vvN (dB)	-68.34	-65.03	-66.54	-76.48	10.1
hhL (dB)	-18.01	-2.08	-5.74	-8.86	48.7
vvL (dB)	-10.26	6.00	5.93	-4.23	9.6
ppN (m/s)	-12.37	12.14	-0.10	4.16	
ppT (m/s)	-97.73	95.91	-0.76	32.88	
hh/vv (dB)	NaN	36.82	8.65	18.89	1055
vh/hh (dB)	NaN	-27.64	-33.49	-35.04	69.9
hv/vv (dB)	NaN	-34.79	-61.36	-49.44	1556
hnjmp (dB)			-0.15		
vnjmp (dB)			-0.15		



CIFEX 2004 Data (cal/250ns+2.5/100ns-3.5/500ns: 53.0,50.0)

W2004-04-15-00-09-17 - PPMAG4, IRIG:1/0/2  
 UTC: 00:09:17.48 to 00:39:25.70, Dur: 1808s  
 TimeLngth: 1808.25s, TimeInt: 28ms (35.4pps)  
 TimeCor=-13.0s, PPS(min,max,med): 35,36,35  
 Timeint/DSPdiff(mn,min,mx):28,28,34/28,28,28  
 Prof: 352 to 64455, NumProf(r/t): 17571/64103  
 ProcTime/Recs: 00:25:48-00:34:04/35142-52712  
 ADacqtime: 25ms; DRate: 198.4KB/s; Flags: 0, 0, 0  
 Pulse: 275ns, IFilt: 5.0MHz; ppPol: HH HV VV  
 TxPol: HHVV, PRF: 20 10 20 10 kHz, NoiseFlg:2,2  
 Range: Delay 75m, Spacing 15m, Gates 100  
 Ave. Pulses: 84, Rng/Prof Aspect@90m/s: 5.9

	Min	Max	Mean	Std	Varc%
hhN (dB)	-68.59	-64.65	-66.46	-76.46	10.0
vvN (dB)	-68.34	-65.03	-66.54	-76.48	10.1
hhL (dB)	-18.01	-2.08	-5.74	-8.86	48.7
vvL (dB)	-10.26	6.00	5.93	-4.23	9.6
ppN (m/s)	-12.37	12.14	-0.10	4.16	
ppT (m/s)	-97.73	95.91	-0.76	32.88	
hh/vv (dB)	NaN	36.82	8.65	18.89	1055
vh/hh (dB)	NaN	-27.64	-33.49	-35.04	69.9
hv/vv (dB)	NaN	-34.79	-61.36	-49.44	1556
hnjmp (dB)			-0.15		
vnjmp (dB)			-0.15		