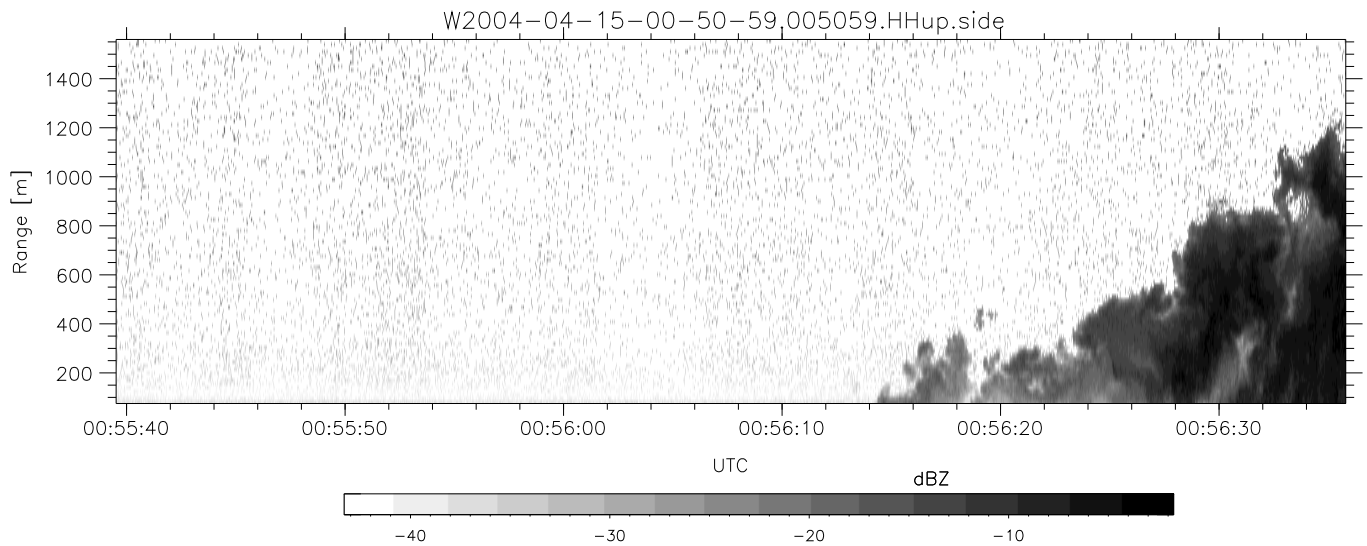
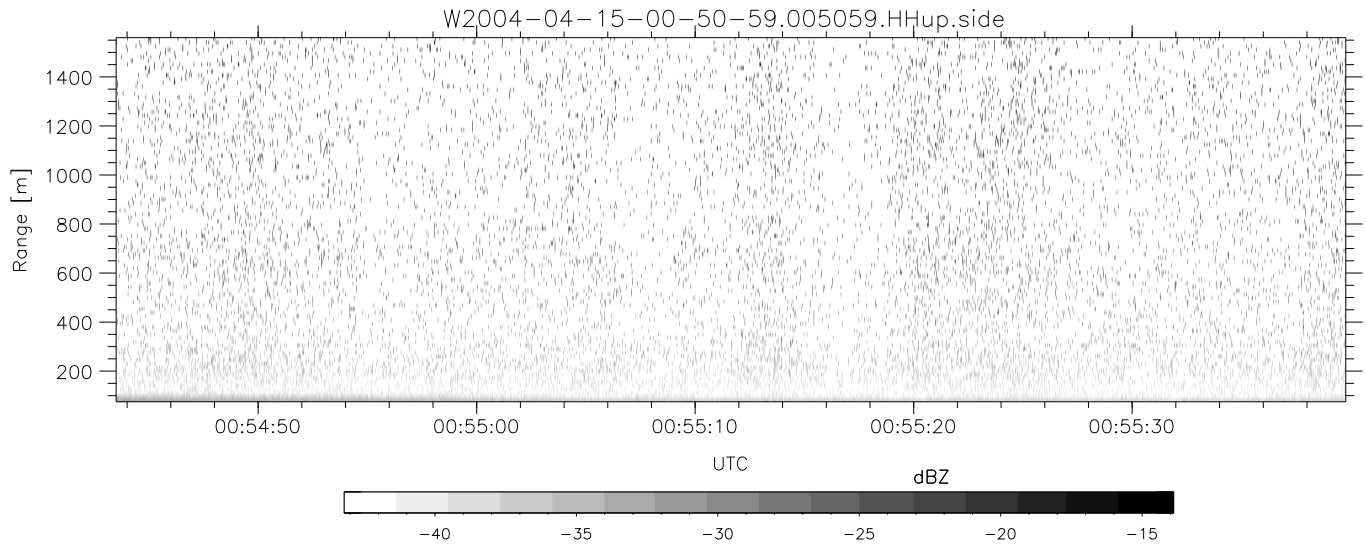
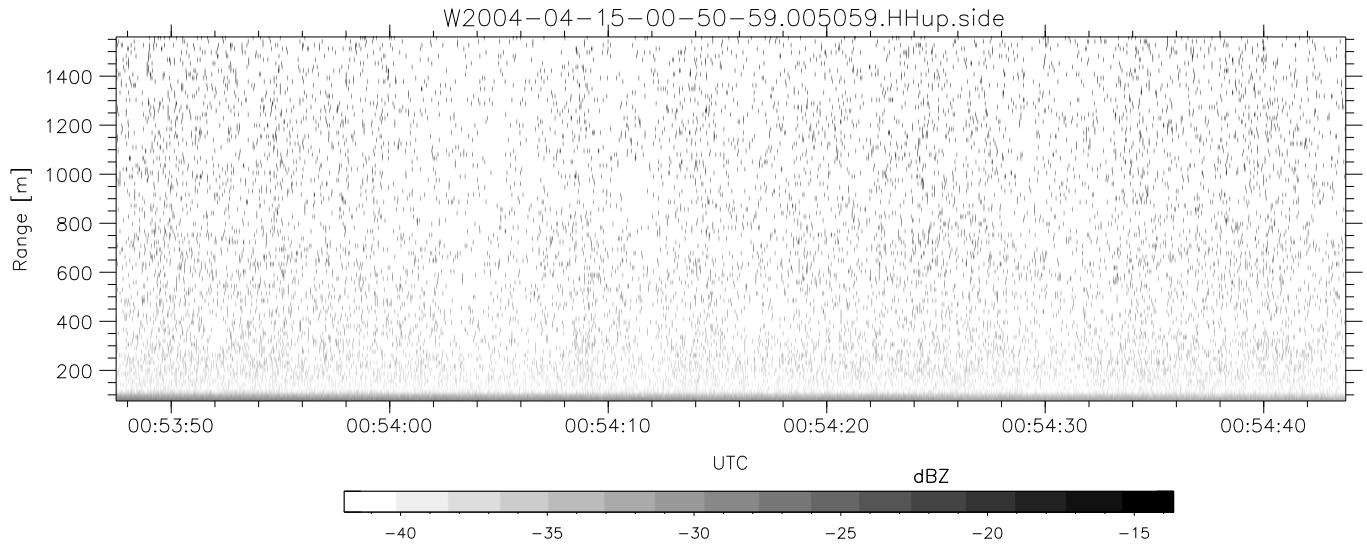


CIFEX 2004 Data (cal/250ns+2.5/100ns-3.5/500ns: 53.0,50.0)

W2004-04-15-00-50-59 - PPMAG4, IRIG:1/0/2
 UTC: 00:50:59.44 to 01:02:37.38, Dur: 698s
 TimeLngth: 697.95s, TimeInt: 28ms (35.4pps)
 TimeCor=-13.0s, PPS(min,max,med): 35,36,35
 Timeint/DSPdiff(mn,min,mx):28,28,31/28,28,28
 Prof: 301 to 25044, NumProf(r/t): 17571/24743
 ProcTime/Recs: 00:50:59-00:59:15/0-17570
 ADacqtime: 25ms; DRate: 198.4KB/s; Flags: 0, 0, 0
 Pulse: 275ns, IFfilt: 5.0MHz; ppPol: HH HV VV
 TxPol: HHVV, PRF: 20 10 20 10 kHz, Noiseflg:4,1
 Range: Delay 75m, Spacing 15m, Gates 100
 Ave. Pulses: 84, Rng/Prof Aspect@90m/s: 5.9

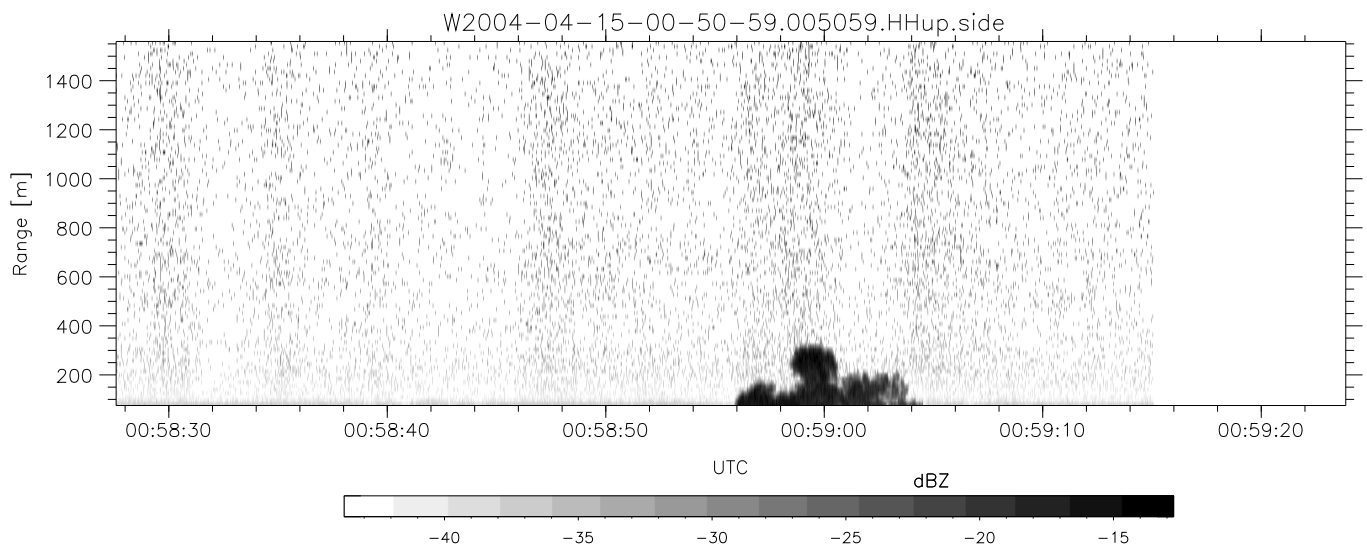
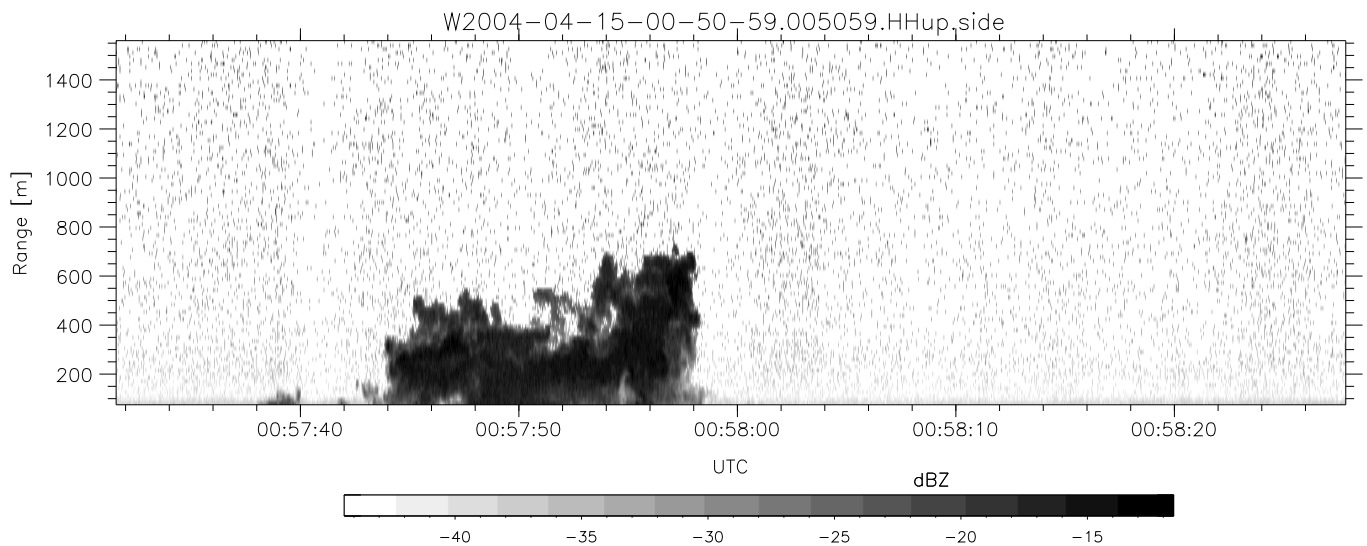
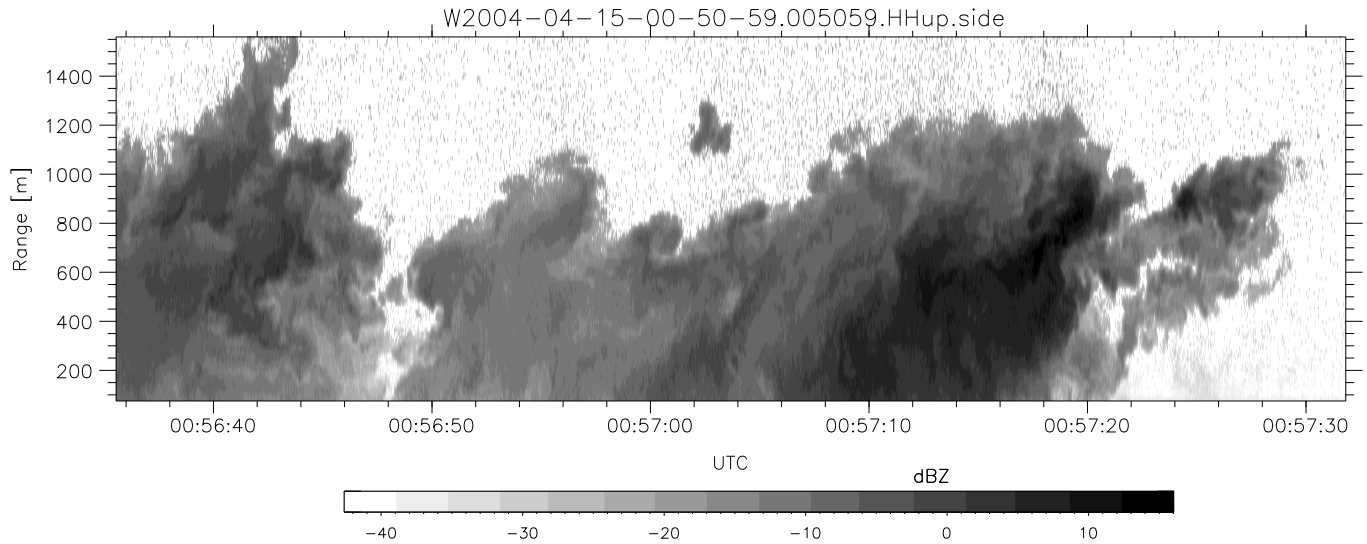
	Min	Max	Mean	Std	Varc%
hhN(dB)	-68.23	-64.98	-66.45	-76.45	10.0
vvN(dB)	-68.43	-64.74	-66.54	-76.44	10.2
hhL(dB)	-22.55	0.73	-4.33	-4.21	102.
vvL(dB)	-13.96	6.00	4.35	0.29	39.3
ppN(m/s)	-12.21	12.56	0.01	4.15	
ppT(m/s)	-96.50	99.20	0.07	32.81	
hh/vv(dB)	NaN	69.00	NaN	49.77	-714
vh/hh(dB)	NaN	-27.51	-39.06	-37.37	147.
hv/vv(dB)	NaN	-33.78	-55.62	-46.92	741.
hnjmp(dB)				0.15	
vnjmp(dB)				0.16	



CIFEX 2004 Data (cal/250ns+2.5/100ns-3.5/500ns: 53.0,50.0)

W2004-04-15-00-50-59 - PPMAG4, IRIG:1/0/2
 UTC: 00:50:59.44 to 01:02:37.38, Dur: 698s
 TimeLngth: 697.95s, TimeInt: 28ms (35.4pps)
 TimeCor=-13.0s, PPS(min,max,med): 35,36,35
 Timeint/DSPdiff(mn,min,mx):28,28,31/28,28,28
 Prof: 301 to 25044, NumProf(r/t): 17571/24743
 ProcTime/Recs: 00:50:59-00:59:15/0-17570
 ADacqtime: 25ms; DRate: 198.4KB/s; Flags: 0, 0, 0
 Pulse: 275ns, IFfilt: 5.0MHz; ppPol: HH HV VV
 TxPol: HHVV, PRF: 20 10 20 10 kHz, Noiseflg:4,1
 Range: Delay 75m, Spacing 15m, Gates 100
 Ave. Pulses: 84, Rng/Prof Aspect@90m/s: 5.9

	Min	Max	Mean	Std	Varc%
hhN (dB)	-68.23	-64.98	-66.45	-76.45	10.0
vvN (dB)	-68.43	-64.74	-66.54	-76.44	10.2
hhL (dB)	-22.55	0.73	-4.33	-4.21	102.
vvL (dB)	-13.96	6.00	4.35	0.29	39.3
ppN (m/s)	-12.21	12.56	0.01	4.15	
ppT (m/s)	-96.50	99.20	0.07	32.81	
hh/vv (dB)	NaN	69.00	NaN	49.77	-714
vh/hh (dB)	NaN	-27.51	-39.06	-37.37	147.
hv/vv (dB)	NaN	-33.78	-55.62	-46.92	741.
hnjmp (dB)				0.15	
vnjmp (dB)				0.16	



CIFEX 2004 Data (cal/250ns+2.5/100ns-3.5/500ns: 53.0,50.0)

W2004-04-15-00-50-59 - PPMAG4, IRIG:1/0/2
 UTC: 00:50:59.44 to 01:02:37.38, Dur: 698s
 TimeLngth: 697.95s, TimeInt: 28ms (35.4pps)
 TimeCor=-13.0s, PPS(min,max,med): 35,36,35
 Timeint/DSPdiff(mn,min,mx):28,28,31/28,28,28
 Prof: 301 to 25044, NumProf(r/t): 17571/24743
 ProcTime/Recs: 00:50:59-00:59:15/0-17570
 ADacqtime: 25ms; DRate: 198.4KB/s; Flags: 0, 0, 0
 Pulse: 275ns, IFfilt: 5.0MHz; ppPol: HH HV VV
 TxPol: HHVV, PRF: 20 10 20 10 kHz, Noiseflg:4,1
 Range: Delay 75m, Spacing 15m, Gates 100
 Ave. Pulses: 84, Rng/Prof Aspect@90m/s: 5.9

	Min	Max	Mean	Std	Varc%
hhN(dB)	-68.23	-64.98	-66.45	-76.45	10.0
vvN(dB)	-68.43	-64.74	-66.54	-76.44	10.2
hhL(dB)	-22.55	0.73	-4.33	-4.21	102.
vvL(dB)	-13.96	6.00	4.35	0.29	39.3
ppN(m/s)	-12.21	12.56	0.01	4.15	
ppT(m/s)	-96.50	99.20	0.07	32.81	
hh/vv(dB)	NaN	69.00	NaN	49.77	-714
vh/hh(dB)	NaN	-27.51	-39.06	-37.37	147.
hv/vv(dB)	NaN	-33.78	-55.62	-46.92	741.
hnjmp(dB)				0.15	
vnjmp(dB)				0.16	