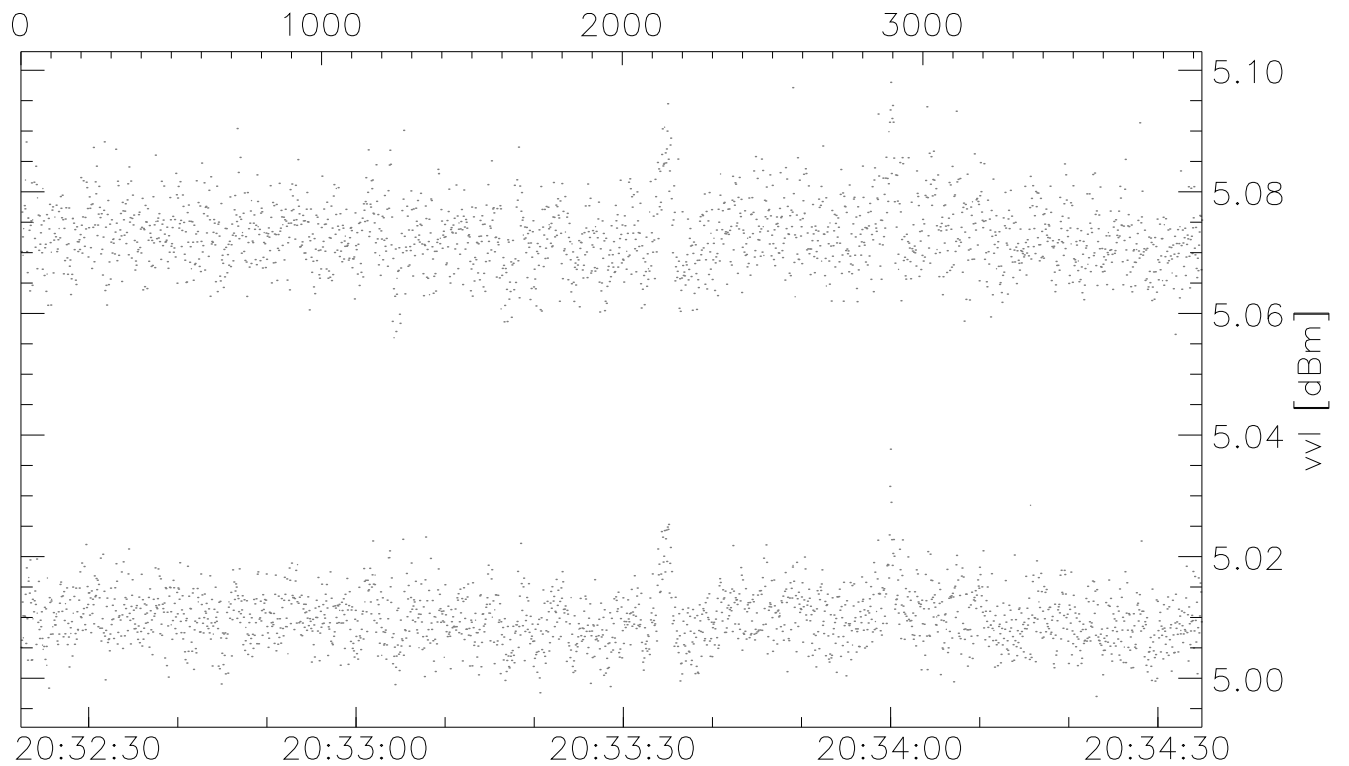
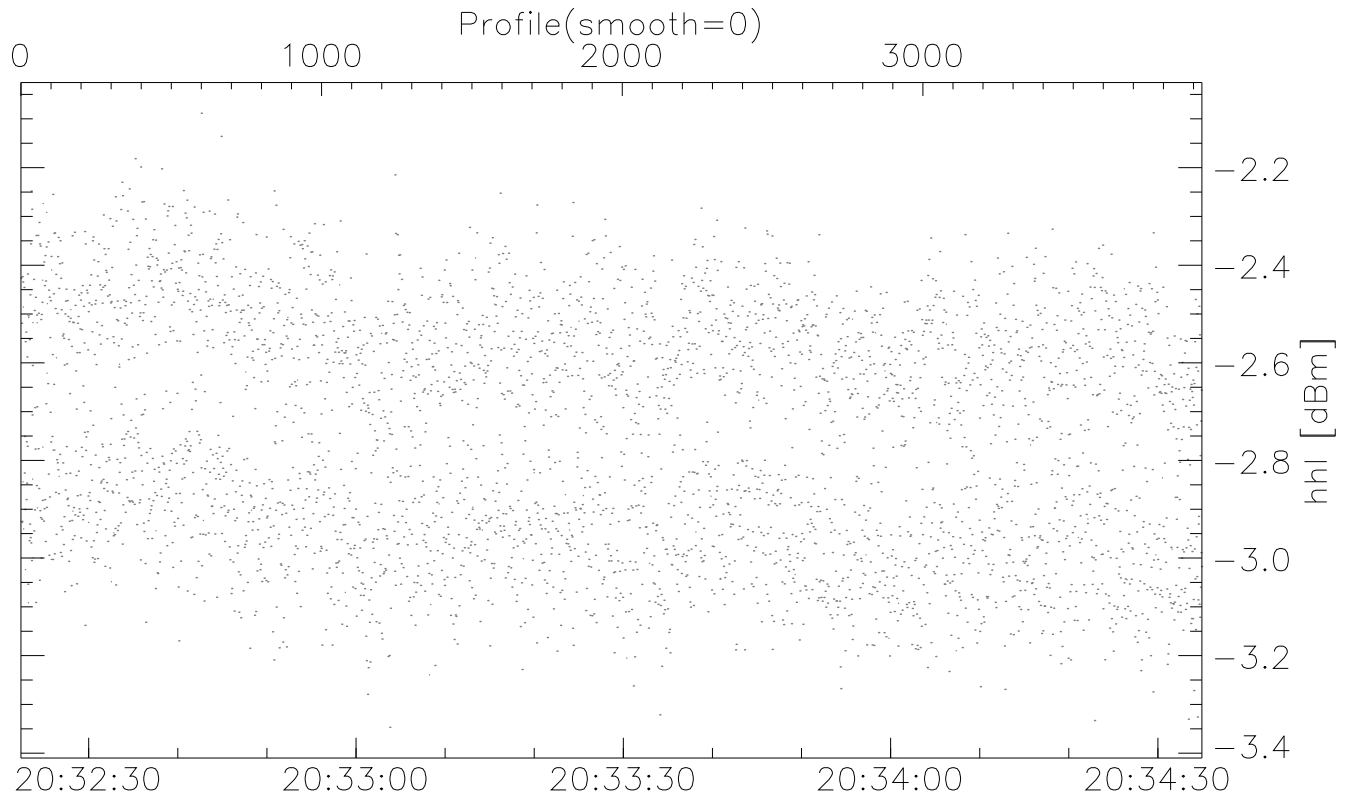


CIFEX 2004

W2004-04-15-20-32-22 - SPPMAG, IRIG:1/0/2  
 UTC: 20:32:22.39 to 20:34:34.93, Dur: 132s  
 TimeLngth: 132.54s, TimeInt: 33ms (29.6pps)  
 TimeCor=-13.0s, PPS(min,max,med): 29,30,30  
 Timeint/DSPdiff(mn,min,mx):33,33,33/33,33,33  
 Prof: 2734 to 6663, NumProf(r/t): 3929/3929  
 ADacqtime: 32ms; DRate: 47.8kB/s; Flags: 0, 0, 0  
 Pulse: 275ns, IFfilt: 5.0MHz; ppPol: HH  
 TxPol: H, PRF: 20 20 20 10 kHz, NoiseFlg:1234  
 Range: Delay 75m, Spacing 30m, Gates 100  
 Ave. Pulses: 520, Rng/Prof Aspect@90m/s: 9.9

	Min	Max	Mean	Std	Varc%
hhN(dB)	-66.47	-65.25	-65.87	-79.63	4.2
vvN(dB)	-66.57	-65.28	-65.92	-79.57	4.3
hhL(dB)	-3.35	-2.09	-2.75	-15.36	5.5
vhL(dB)	5.00	5.10	5.04	-16.30	0.7
ppN(m/s)	-15.78	15.79	-0.15	9.08	
ppT(m/s)	-0.27	-0.08	-0.18	0.03	
vh/hh(dB)	-99	-99	-99	-99	-99
hnjmp(dB)			-0.15		
vnjmp(dB)			-0.15		

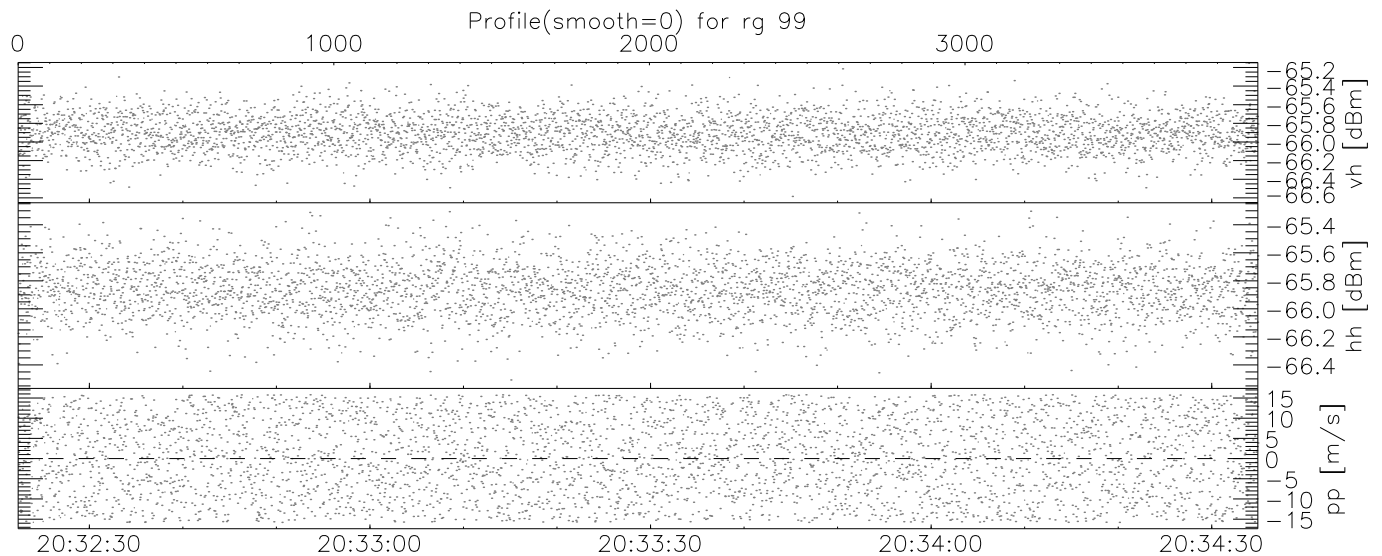
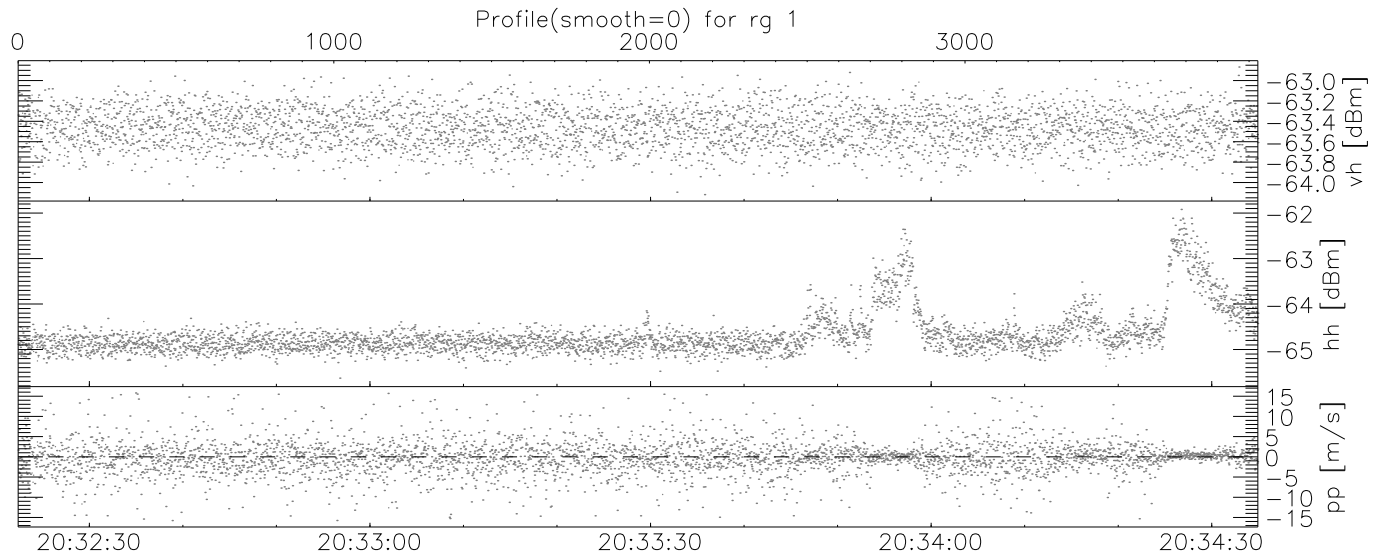
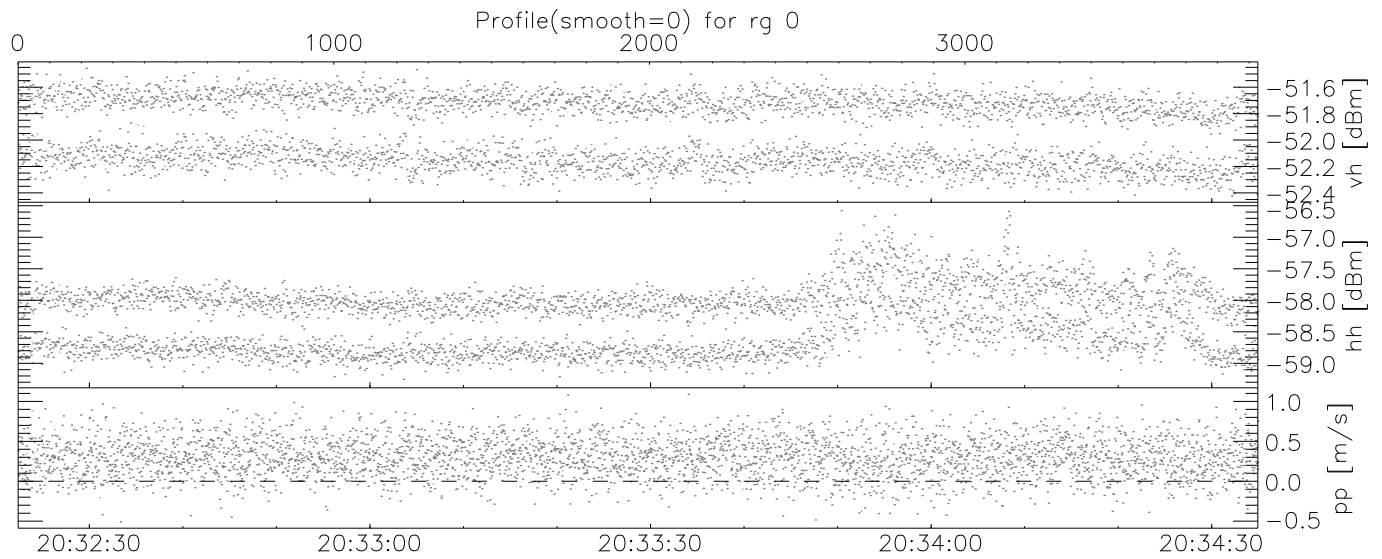


UTC

CIFEX 2004

W2004-04-15-20-32-22 - SPPMAG, IRIG:1/0/2  
 UTC: 20:32:22.39 to 20:34:34.93, Dur: 132s  
 TimeLngth: 132.54s, TimeInt: 33ms (29.6pps)  
 TimeCor=-13.0s, PPS(min,max,med): 29,30,30  
 Timeint/DSPdiff(mn,min,mx):33,33,33/33,33,33  
 Prof: 2734 to 6663, NumProf(r/t): 3929/3929  
 ADacqtime: 32ms; DRate: 47.8kB/s; Flags: 0, 0, 0  
 Pulse: 275ns, IFfilt: 5.0MHz; ppPol: HH  
 TxPol: H, PRF: 20 20 20 10 kHz, NoiseFlg:1234  
 Range: Delay 75m, Spacing 30m, Gates 100  
 Ave. Pulses: 520, Rng/Prof Aspect@90m/s: 9.9

	Min	Max	Mean	Std	Varc%
hhN(dB)	-66.47	-65.25	-65.87	-79.63	4.2
vvN(dB)	-66.57	-65.28	-65.92	-79.57	4.3
hhL(dB)	-3.35	-2.09	-2.75	-15.36	5.5
vhL(dB)	5.00	5.10	5.04	-16.30	0.7
ppN(m/s)	-15.78	15.79	-0.15	9.08	
ppT(m/s)	-0.27	-0.08	-0.18	0.03	
vh/hh(dB)	-99	-99	-99	-99	-99
hnjmp(dB)			-0.15		
vnjmp(dB)			-0.15		



UTC

CIFEX 2004

W2004-04-15-20-32-22 - SPPMAG, IRIG:1/0/2  
 UTC: 20:32:22.39 to 20:34:34.93, Dur: 132s  
 TimeLngth: 132.54s, TimeInt: 33ms (29.6pps)  
 TimeCor=-13.0s, PPS(min,max,med): 29,30,30  
 Timeint/DSPdiff(mn,min,mx):33,33,33/33,33,33  
 Prof: 2734 to 6663, NumProf(r/t): 3929/3929  
 ADacqtime: 32ms; DRate: 47.8kB/s; Flags: 0, 0, 0  
 Pulse: 275ns, IFfilt: 5.0MHz; ppPol: HH  
 TxPol: H, PRF: 20 20 20 10 kHz, NoiseFlg:1234  
 Range: Delay 75m, Spacing 30m, Gates 100  
 Ave. Pulses: 520, Rng/Prof Aspect@90m/s: 9.9

	Min	Max	Mean	Std	Varc%
hhN(dB)	-66.47	-65.25	-65.87	-79.63	4.2
vvN(dB)	-66.57	-65.28	-65.92	-79.57	4.3
hhL(dB)	-3.35	-2.09	-2.75	-15.36	5.5
vhL(dB)	5.00	5.10	5.04	-16.30	0.7
ppN(m/s)	-15.78	15.79	-0.15	9.08	
ppT(m/s)	-0.27	-0.08	-0.18	0.03	
vh/hh(dB)	-99	-99	-99	-99	-99
hnjmp(dB)			-0.15		
vnjmp(dB)			-0.15		