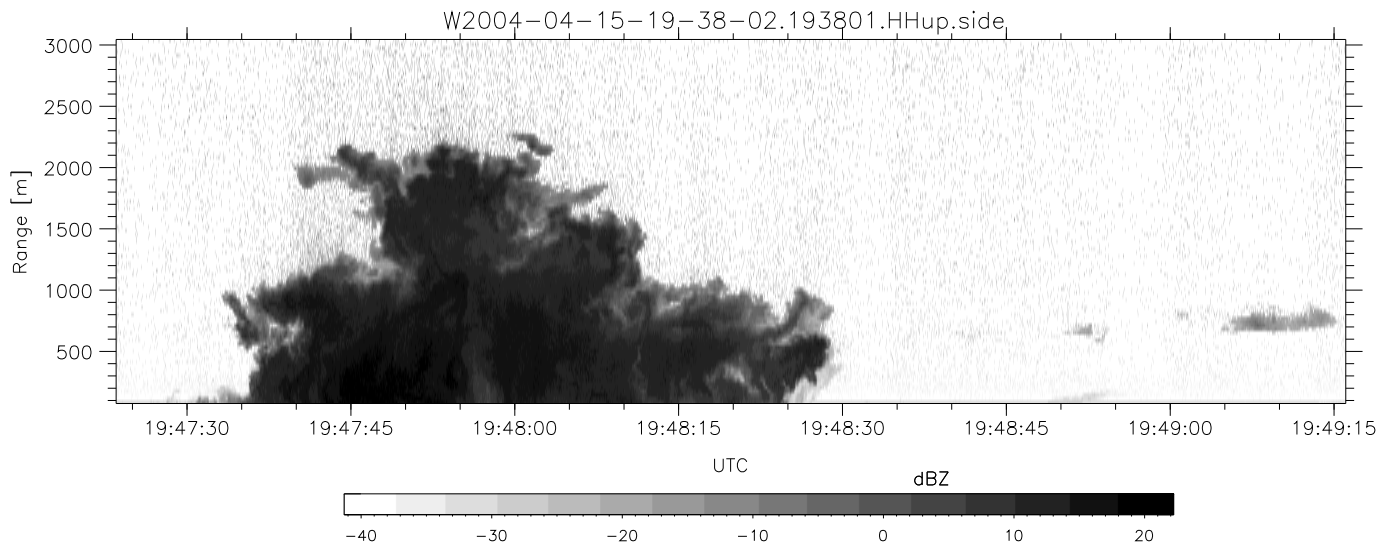
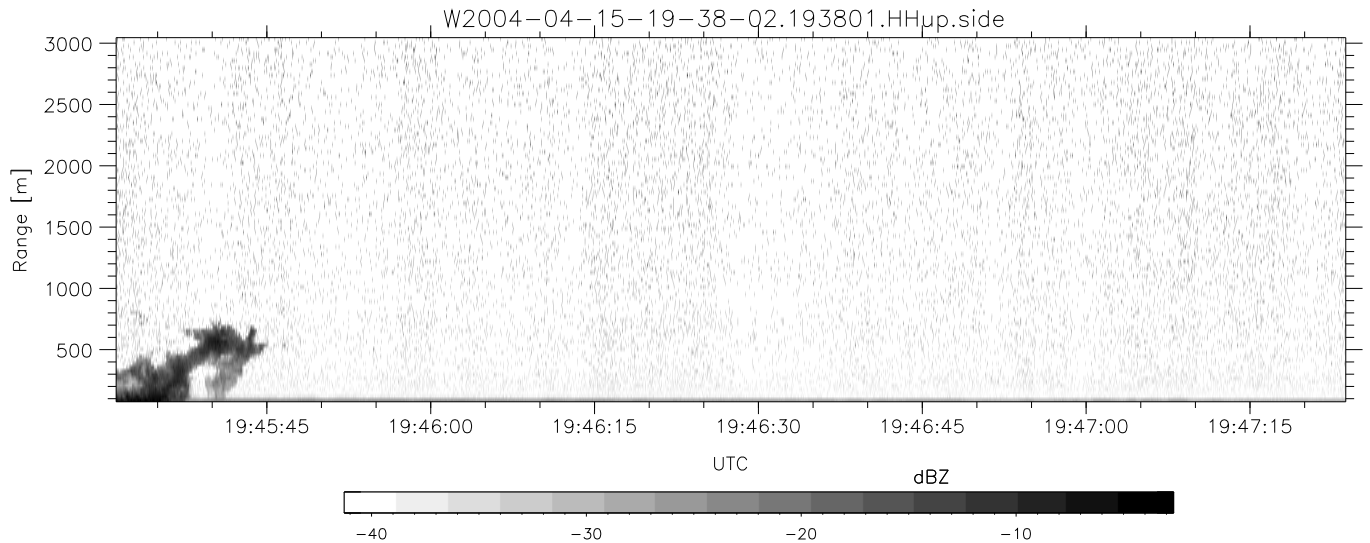
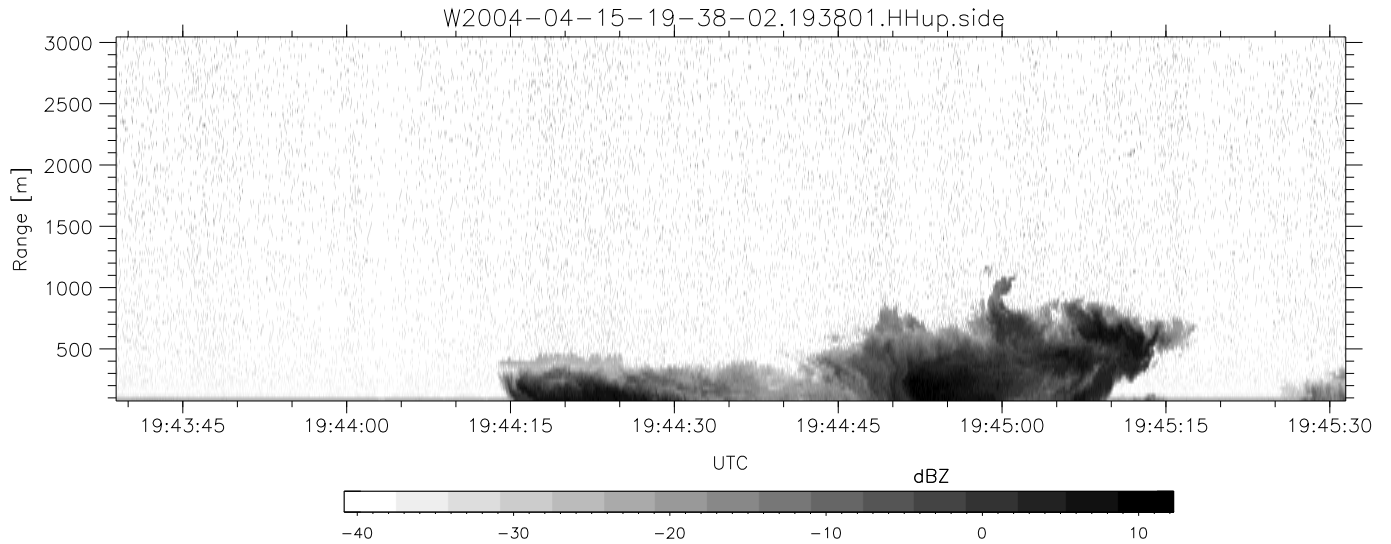


CIFEX 2004 Data (cal/250ns+2.5/100ns-3.5/500ns: 53.0,50.0)

W2004-04-15-19-38-02 - PPMAG4, IRIG:1/0/2
 UTC: 19:38:01.99 to 19:54:19.56, Dur: 978s
 TimeLngth: 977.56s, TimeInt: 28ms (35.4pps)
 TimeCor=-13.0s, PPS(min,max,med): 35,36,35
 Timeint/DSPdiff(mn,min,mx):28,28,38/28,28,33
 Prof: 296 to 34940, NumProf(r/t): 34644/34644
 ADacqtime: 25ms; DRate: 198.4KB/s; Flags: 0, 0, 0
 Pulse: 275ns, IFfilt: 5.0MHz; ppPol: HH HV W
 TxPol: HHVV, PRF: 20 10 20 10 kHz, NoiseFlg:4,3
 Range: Delay 75m, Spacing 30m, Gates 100
 Ave. Pulses: 84, Rng/Prof Aspect@90m/s: 11.8

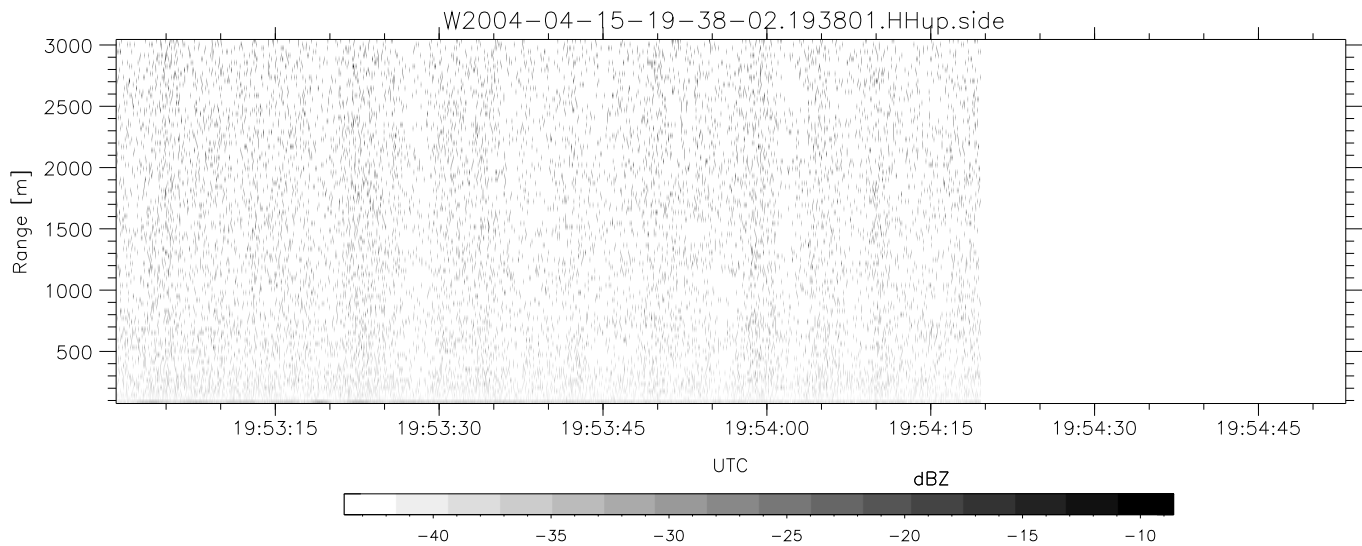
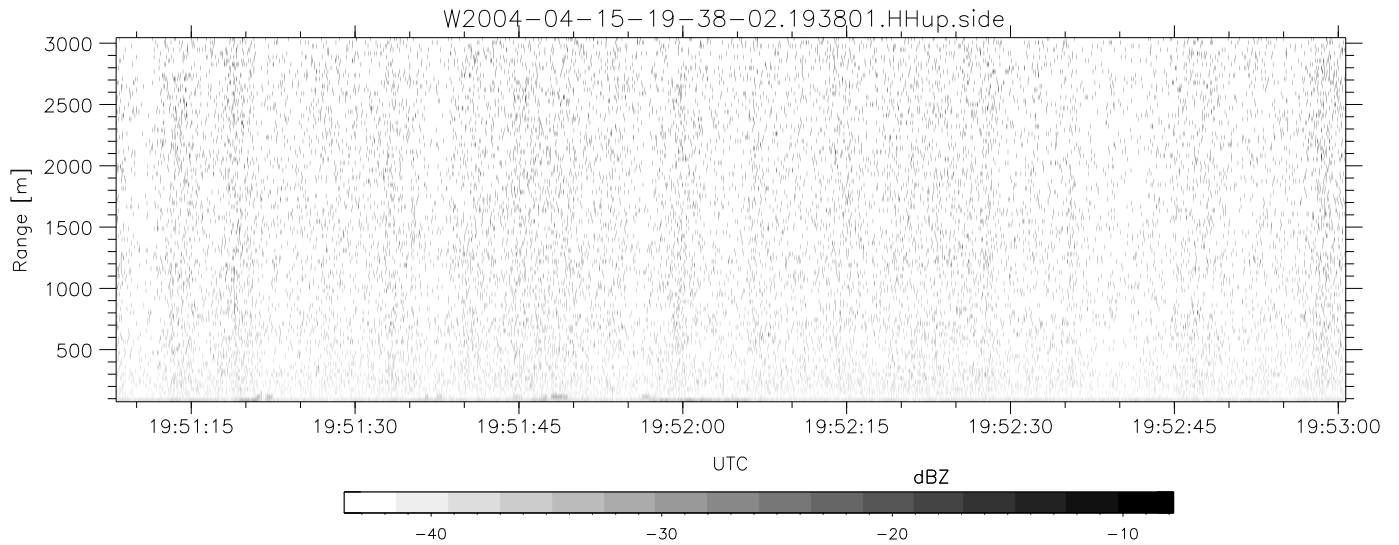
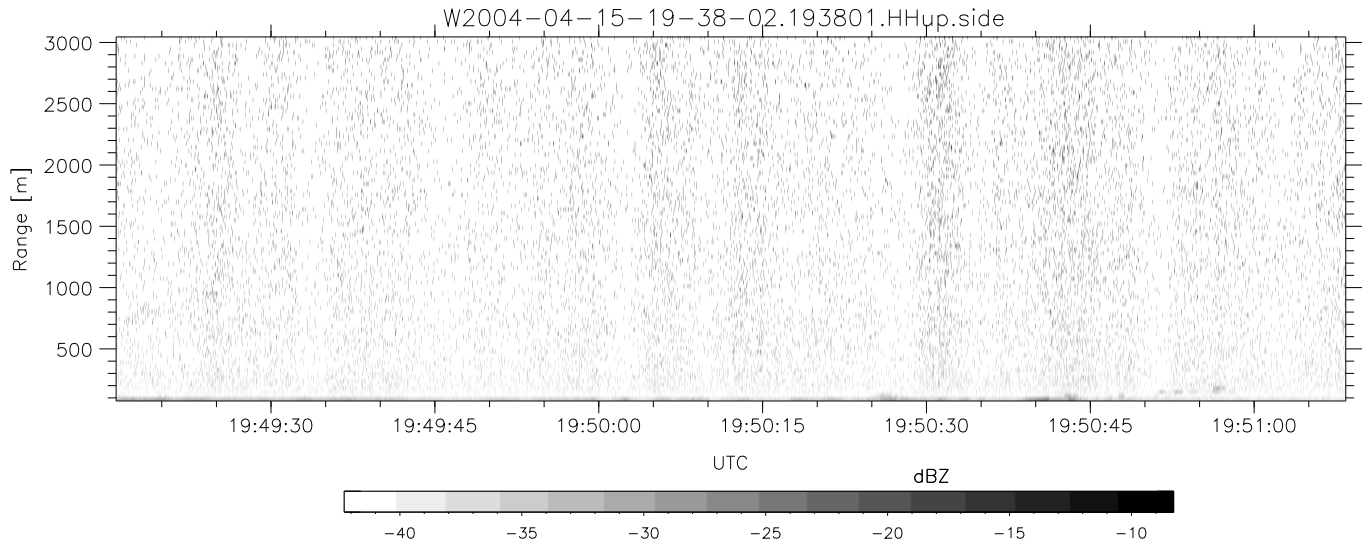
	Min	Max	Mean	Std	Varc%
hhN (dB)	-67.54	-63.94	-65.66	-75.71	9.9
vvN (dB)	-67.56	-63.90	-65.68	-75.59	10.2
hhL (dB)	-21.50	1.72	-2.67	-3.41	84.4
vvL (dB)	-11.87	6.00	2.46	1.26	75.8
ppN (m/s)	-12.50	12.61	-0.01	4.11	
ppT (m/s)	-98.73	99.58	-0.06	32.47	
hh/vv (dB)	NaN	73.14	NaN	53.71	-512
vh/hh (dB)	NaN	-25.21	-38.24	-36.94	134.
hv/vv (dB)	NaN	-33.55	-49.04	-43.40	366.
hn_jmp (dB)			-0.14		
vn_jmp (dB)			-0.13		



CIFEX 2004 Data (cal/250ns+2.5/100ns-3.5/500ns: 53.0,50.0)

W2004-04-15-19-38-02 - PPMAG4, IRIG:1/0/2
 UTC: 19:38:01.99 to 19:54:19.56, Dur: 978s
 TimeLngth: 977.56s, TimeInt: 28ms (35.4pps)
 TimeCor=-13.0s, PPS(min,max,med): 35,36,35
 Timeint/DSPdiff(mn,min,mx):28,28,38/28,28,33
 Prof: 296 to 34940, NumProf(r/t): 34644/34644
 ADacqtime: 25ms; DRate: 198.4KB/s; Flags: 0, 0, 0
 Pulse: 275ns, IFfilt: 5.0MHz; ppPol: HH HV VV
 TxPol: HHVV, PRF: 20 10 20 10 kHz, NoiseFlg:4,3
 Range: Delay 75m, Spacing 30m, Gates 100
 Ave. Pulses: 84, Rng/Prof Aspect@90m/s: 11.8

	Min	Max	Mean	Std	Varc%
hhN(dB)	-67.54	-63.94	-65.66	-75.71	9.9
vvN(dB)	-67.56	-63.90	-65.68	-75.59	10.2
hhL(dB)	-21.50	1.72	-2.67	-3.41	84.4
vvL(dB)	-11.87	6.00	2.46	1.26	75.8
ppN(m/s)	-12.50	12.61	-0.01	4.11	
ppT(m/s)	-98.73	99.58	-0.06	32.47	
hh/vv(dB)	NaN	73.14	NaN	53.71	-512
vh/hh(dB)	NaN	-25.21	-38.24	-36.94	134.
hv/vv(dB)	NaN	-33.55	-49.04	-43.40	366.
hn_jmp(dB)			-0.14		
vn_jmp(dB)			-0.13		



CIFEX 2004 Data (cal/250ns+2.5/100ns-3.5/500ns: 53.0,50.0)

W2004-04-15-19-38-02 - PPMAG4, IRIG:1/0/2
 UTC: 19:38:01.99 to 19:54:19.56, Dur: 978s
 TimeLngth: 977.56s, TimeInt: 28ms (35.4pps)
 TimeCor=-13.0s, PPS(min,max,med): 35,36,35
 Timeint/DSPdiff(mn,min,mx):28,28,38/28,28,33
 Prof: 296 to 34940, NumProf(r/t): 34644/34644
 ADacqtime: 25ms; DRate: 198.4KB/s; Flags: 0, 0, 0
 Pulse: 275ns, IFfilt: 5.0MHz; ppPol: HH HV VV
 TxPol: HHVV, PRF: 20 10 20 10 kHz, NoiseFlg:4,3
 Range: Delay 75m, Spacing 30m, Gates 100
 Ave. Pulses: 84, Rng/Prof Aspect@90m/s: 11.8

	Min	Max	Mean	Std	Varc%
hhN (dB)	-67.54	-63.94	-65.66	-75.71	9.9
vvN (dB)	-67.56	-63.90	-65.68	-75.59	10.2
hhL (dB)	-21.50	1.72	-2.67	-3.41	84.4
vvL (dB)	-11.87	6.00	2.46	1.26	75.8
ppN (m/s)	-12.50	12.61	-0.01	4.11	
ppT (m/s)	-98.73	99.58	-0.06	32.47	
hh/vv (dB)	NaN	73.14	NaN	53.71	-512
vh/hh (dB)	NaN	-25.21	-38.24	-36.94	134.
hv/vv (dB)	NaN	-33.55	-49.04	-43.40	366.
hn_jmp (dB)			-0.14		
vn_jmp (dB)			-0.13		