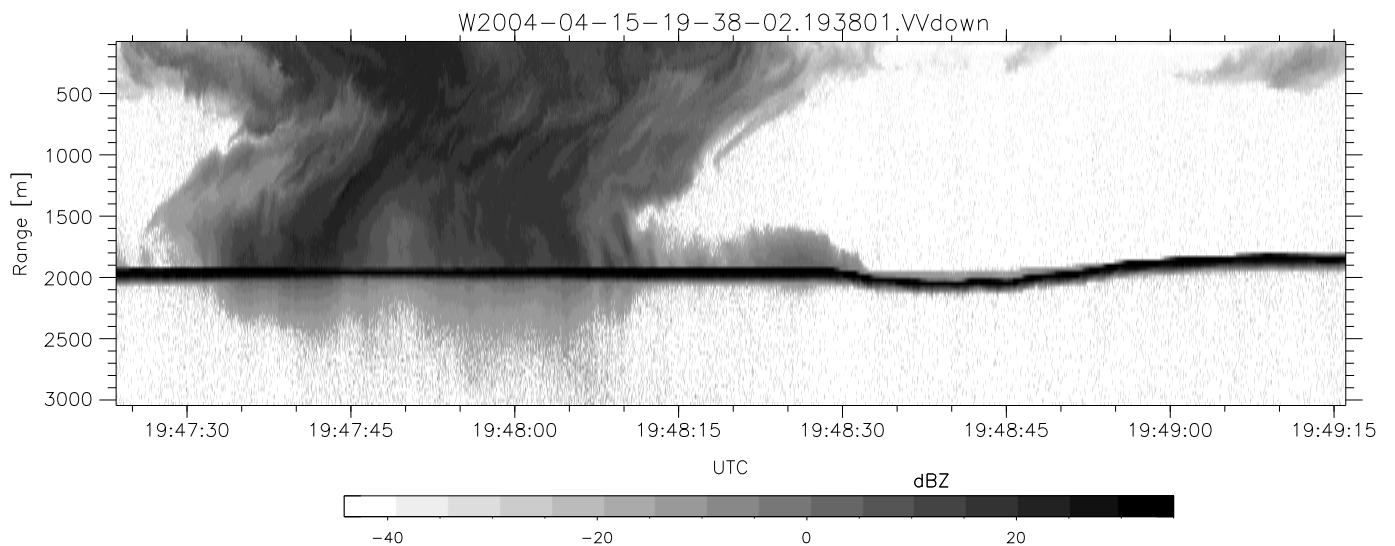
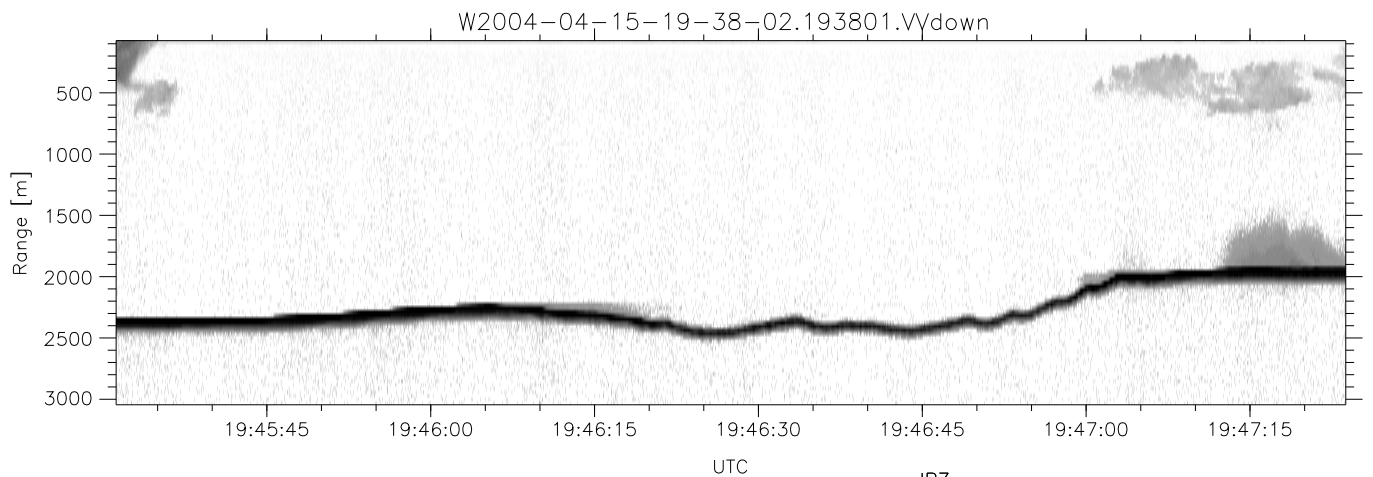
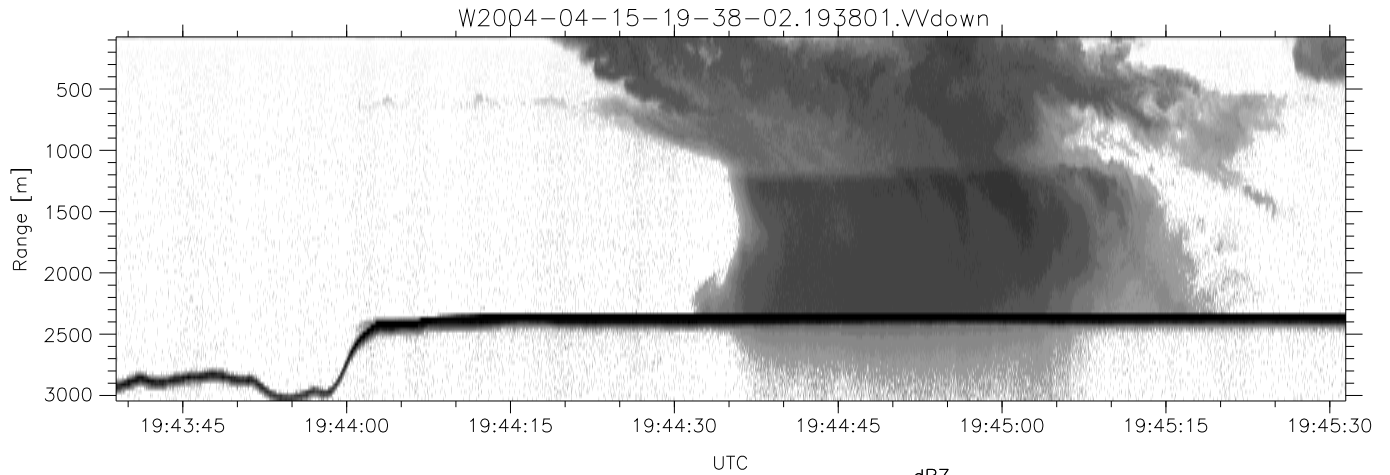


CIFEX 2004 Data (cal/250ns+2.5/100ns-3.5/500ns: 53.0,50.0)

W2004-04-15-19-38-02 - PPMAG4, IRIG:1/0/2  
 UTC: 19:38:01.99 to 19:54:19.56, Dur: 978s  
 TimeLngth: 977.56s, TimeInt: 28ms (35.4pps)  
 TimeCor=-13.0s, PPS(min,max,med): 35,36,35  
 Timeint/DSPdiff(mn,min,mx):28,28,38/28,28,33  
 Prof: 296 to 34940, NumProf(r/t): 34644/34644  
 ADacqtime: 25ms; DRate: 198.4KB/s; Flags: 0, 0, 0  
 Pulse: 275ns, IFfilt: 5.0MHz; ppPol: HH HV W  
 TxPol: HHVV, PRF: 20 10 20 10 kHz, NoiseFlg:4,3  
 Range: Delay 75m, Spacing 30m, Gates 100  
 Ave. Pulses: 84, Rng/Prof Aspect@90m/s: 11.8

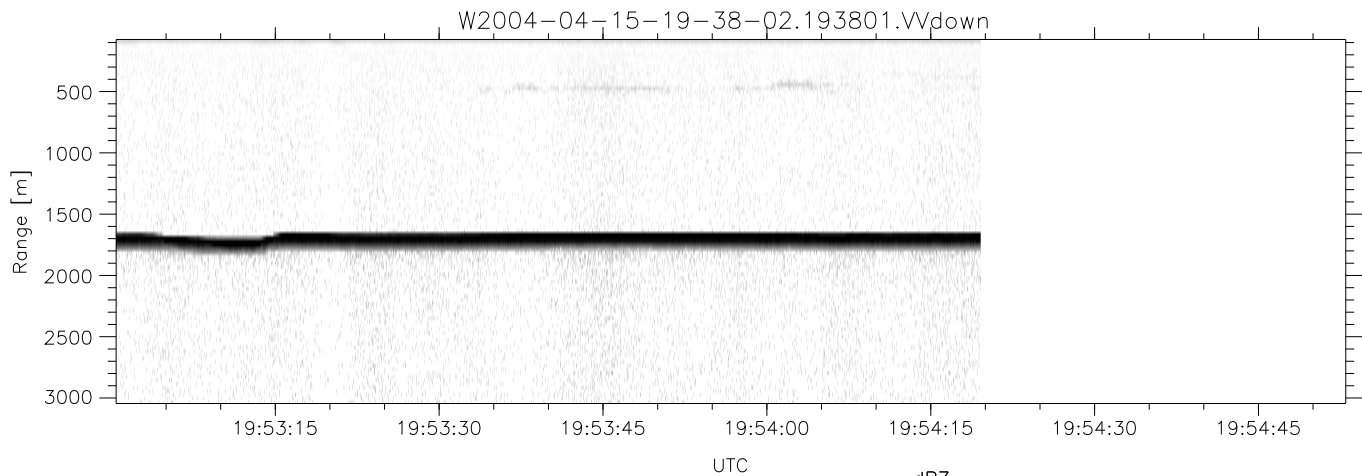
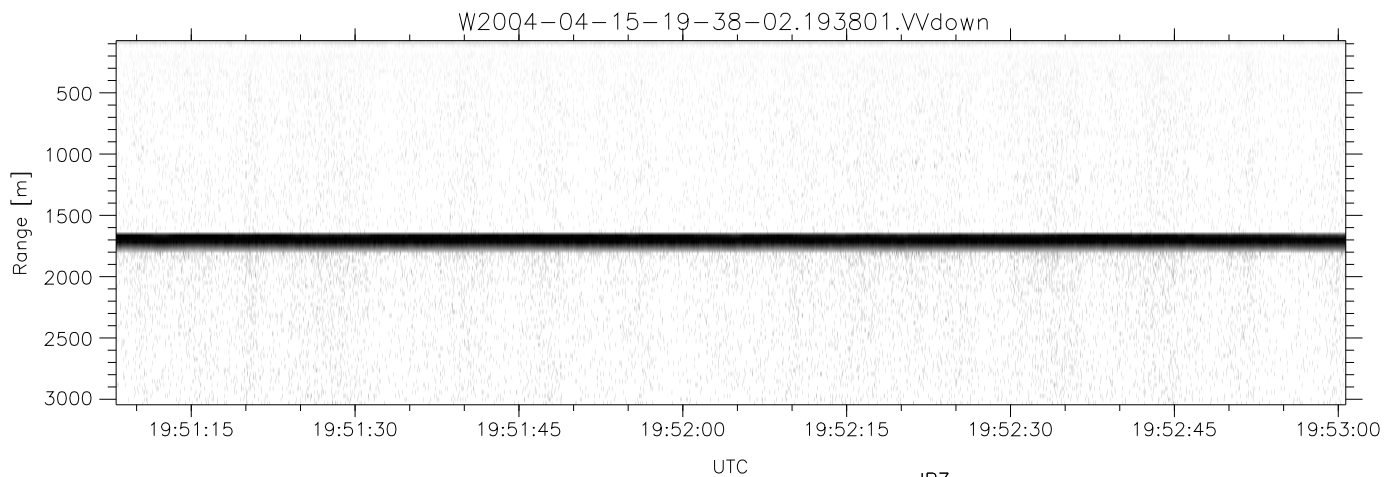
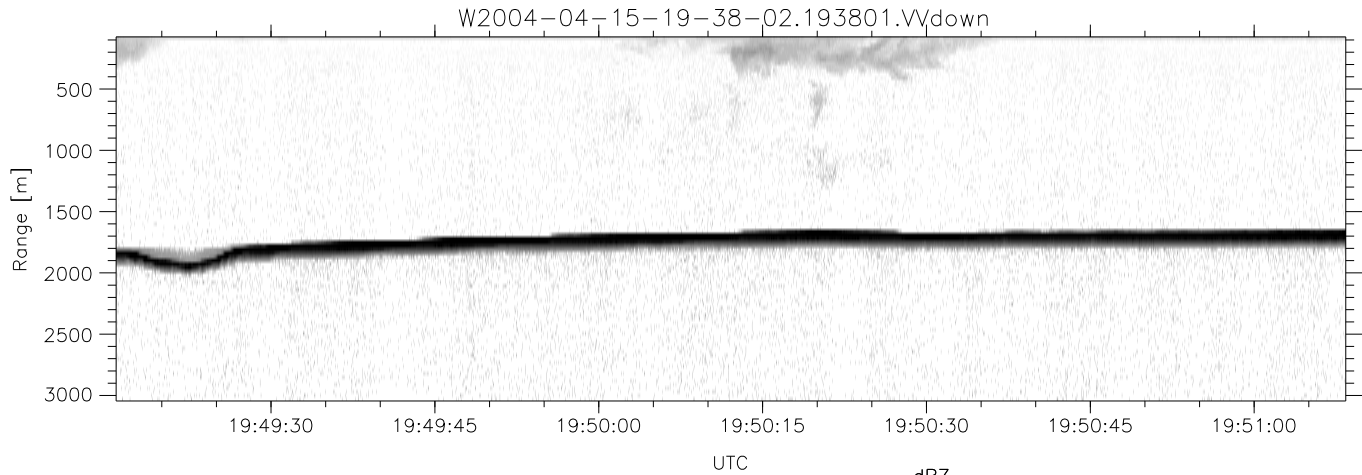
|             | Min    | Max    | Mean   | Std    | Varc% |
|-------------|--------|--------|--------|--------|-------|
| hhN (dB)    | -67.54 | -63.94 | -65.66 | -75.71 | 9.9   |
| vvN (dB)    | -67.56 | -63.90 | -65.68 | -75.59 | 10.2  |
| hhL (dB)    | -21.50 | 1.72   | -2.67  | -3.41  | 84.4  |
| vvL (dB)    | -11.87 | 6.00   | 2.46   | 1.26   | 75.8  |
| ppN (m/s)   | -12.50 | 12.61  | -0.01  | 4.11   |       |
| ppT (m/s)   | -98.73 | 99.58  | -0.06  | 32.47  |       |
| hh/vv (dB)  | NaN    | 73.14  | NaN    | 53.71  | -512  |
| vh/hh (dB)  | NaN    | -25.21 | -38.24 | -36.94 | 134.  |
| hv/vv (dB)  | NaN    | -33.55 | -49.04 | -43.40 | 366.  |
| hn_jmp (dB) |        |        | -0.14  |        |       |
| vn_jmp (dB) |        |        | -0.13  |        |       |



CIFEX 2004 Data (cal/250ns+2.5/100ns-3.5/500ns: 53.0,50.0)

W2004-04-15-19-38-02 - PPMAG4, IRIG:1/0/2  
 UTC: 19:38:01.99 to 19:54:19.56, Dur: 978s  
 TimeLngth: 977.56s, TimeInt: 28ms (35.4pps)  
 TimeCor=-13.0s, PPS(min,max,med): 35,36,35  
 Timeint/DSPdiff(mn,min,mx):28,28,38/28,28,33  
 Prof: 296 to 34940, NumProf(r/t): 34644/34644  
 ADacqtime: 25ms; DRate: 198.4KB/s; Flags: 0, 0, 0  
 Pulse: 275ns, IFfilt: 5.0MHz; ppPol: HH HV VV  
 TxPol: HHVV, PRF: 20 10 20 10 kHz, NoiseFlg:4,3  
 Range: Delay 75m, Spacing 30m, Gates 100  
 Ave. Pulses: 84, Rng/Prof Aspect@90m/s: 11.8

|            | Min    | Max    | Mean   | Std    | Varc% |
|------------|--------|--------|--------|--------|-------|
| hhN(dB)    | -67.54 | -63.94 | -65.66 | -75.71 | 9.9   |
| vvN(dB)    | -67.56 | -63.90 | -65.68 | -75.59 | 10.2  |
| hhL(dB)    | -21.50 | 1.72   | -2.67  | -3.41  | 84.4  |
| vvL(dB)    | -11.87 | 6.00   | 2.46   | 1.26   | 75.8  |
| ppN(m/s)   | -12.50 | 12.61  | -0.01  | 4.11   |       |
| ppT(m/s)   | -98.73 | 99.58  | -0.06  | 32.47  |       |
| hh/vv(dB)  | NaN    | 73.14  | NaN    | 53.71  | -512  |
| vh/hh(dB)  | NaN    | -25.21 | -38.24 | -36.94 | 134.  |
| hv/vv(dB)  | NaN    | -33.55 | -49.04 | -43.40 | 366.  |
| hn_jmp(dB) |        |        | -0.14  |        |       |
| vn_jmp(dB) |        |        | -0.13  |        |       |



CIFEX 2004 Data (cal/250ns+2.5/100ns-3.5/500ns: 53.0,50.0)

W2004-04-15-19-38-02 - PPMAG4, IRIG:1/0/2  
 UTC: 19:38:01.99 to 19:54:19.56, Dur: 978s  
 TimeLngth: 977.56s, TimeInt: 28ms (35.4pps)  
 TimeCor=-13.0s, PPS(min,max,med): 35,36,35  
 Timeint/DSPdiff(mn,min,mx):28,28,38/28,28,33  
 Prof: 296 to 34940, NumProf(r/t): 34644/34644  
 ADacqtime: 25ms; DRate: 198.4KB/s; Flags: 0, 0, 0  
 Pulse: 275ns, IFfilt: 5.0MHz; ppPol: HH HV VV  
 TxPol: HHVV, PRF: 20 10 20 10 kHz, NoiseFlg:4,3  
 Range: Delay 75m, Spacing 30m, Gates 100  
 Ave. Pulses: 84, Rng/Prof Aspect@90m/s: 11.8

|             | Min    | Max    | Mean   | Std    | Varc% |
|-------------|--------|--------|--------|--------|-------|
| hhN (dB)    | -67.54 | -63.94 | -65.66 | -75.71 | 9.9   |
| vvN (dB)    | -67.56 | -63.90 | -65.68 | -75.59 | 10.2  |
| hhL (dB)    | -21.50 | 1.72   | -2.67  | -3.41  | 84.4  |
| vvL (dB)    | -11.87 | 6.00   | 2.46   | 1.26   | 75.8  |
| ppN (m/s)   | -12.50 | 12.61  | -0.01  | 4.11   |       |
| ppT (m/s)   | -98.73 | 99.58  | -0.06  | 32.47  |       |
| hh/vv (dB)  | NaN    | 73.14  | NaN    | 53.71  | -512  |
| vh/hh (dB)  | NaN    | -25.21 | -38.24 | -36.94 | 134.  |
| hv/vv (dB)  | NaN    | -33.55 | -49.04 | -43.40 | 366.  |
| hn_jmp (dB) |        |        | -0.14  |        |       |
| vn_jmp (dB) |        |        | -0.13  |        |       |