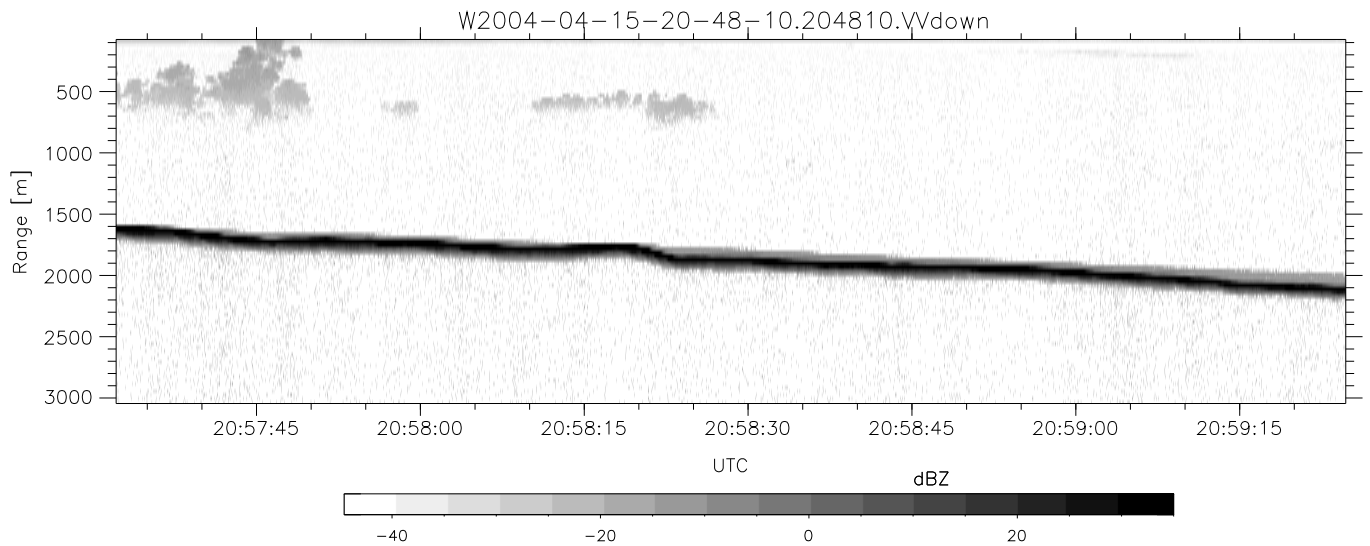
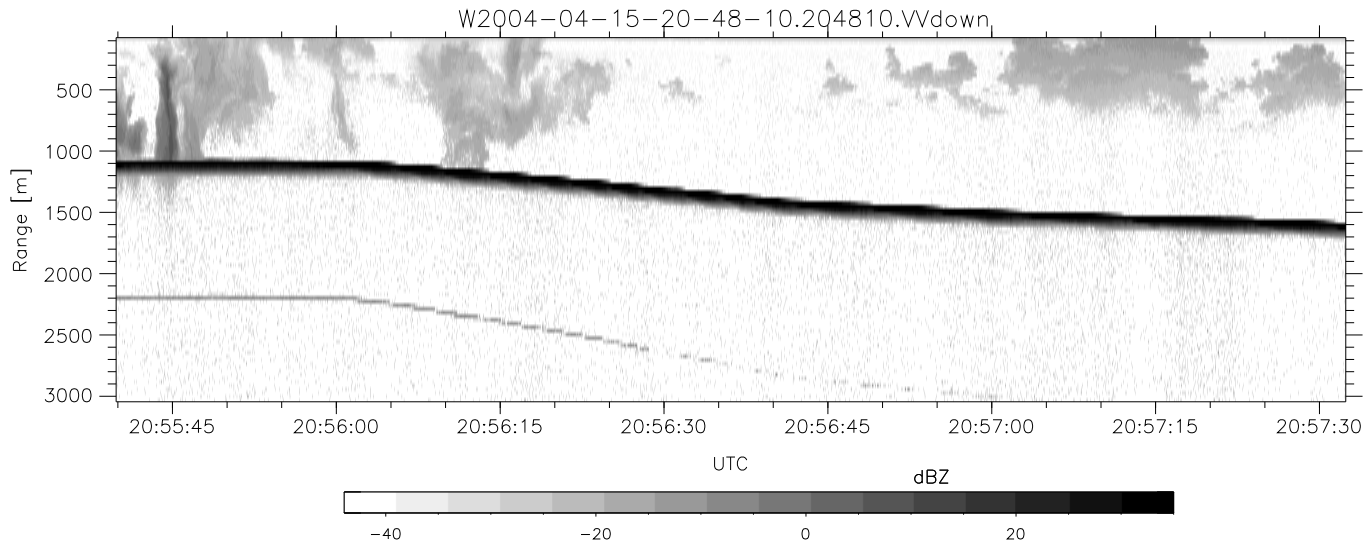
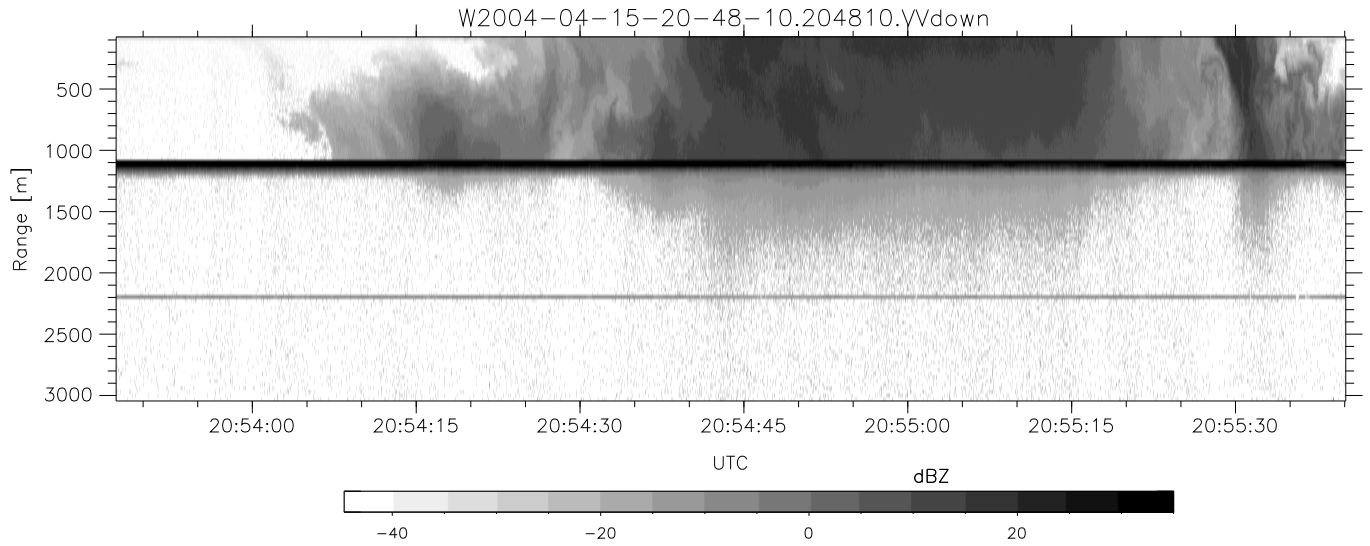


CIFEX 2004 Data (cal/250ns+2.5/100ns-3.5/500ns: 53.0,50.0)

W2004-04-15-20-48-10 - PPMAG4, IRIG:1/0/2
 UTC: 20:48:10.64 to 22:12:49.10, Dur: 5079s
 TimeLngth: 5078.63s, TimeInt: 28ms (35.4pps)
 TimeCor=-13.0s, PPS(min,max,med): 35,36,35
 Timeint/DSPdiff(mn,min,mx):28,28,31/28,28,29
 Prof: 2137 to 182110, NumProf(r/t): 35142/179973
 ProcTime/Recs: 20:48:10-21:04:42/0-35141
 ADacqtime: 25ms; DRate: 198.4KB/s; Flags: 0, 0, 0
 Pulse: 275ns, IFfilt: 5.0MHz; ppPol: HH HV VV
 TxPol: HHVV, PRF: 20 10 20 10 kHz, Noiseflg:4,3
 Range: Delay 75m, Spacing 30m, Gates 100
 Ave. Pulses: 84, Rng/Prof Aspect@90m/s: 11.8

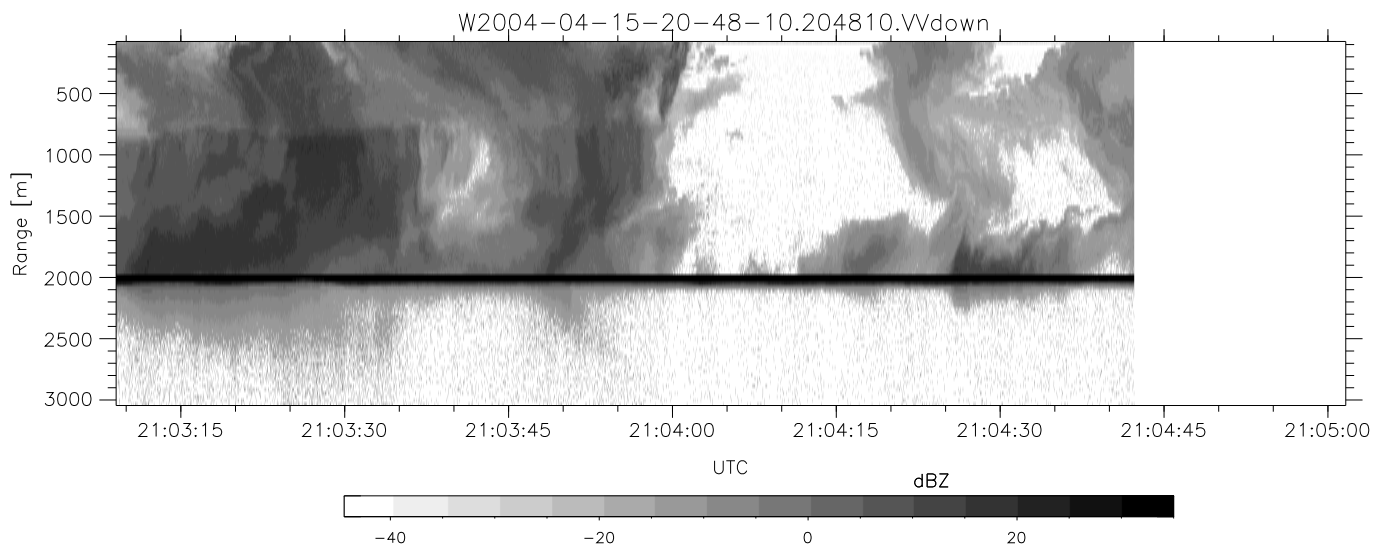
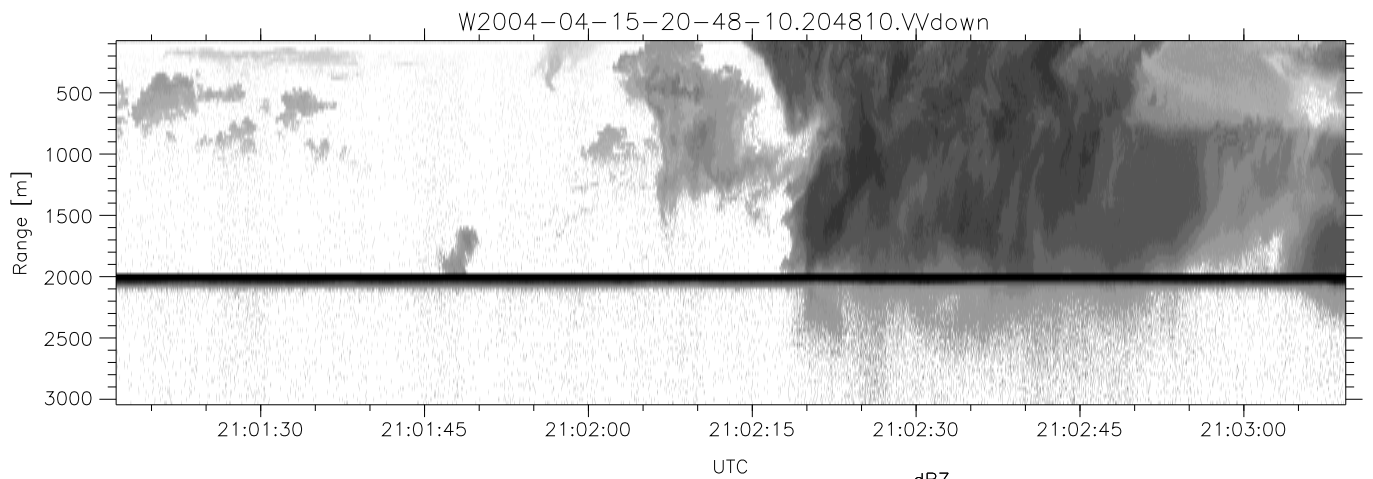
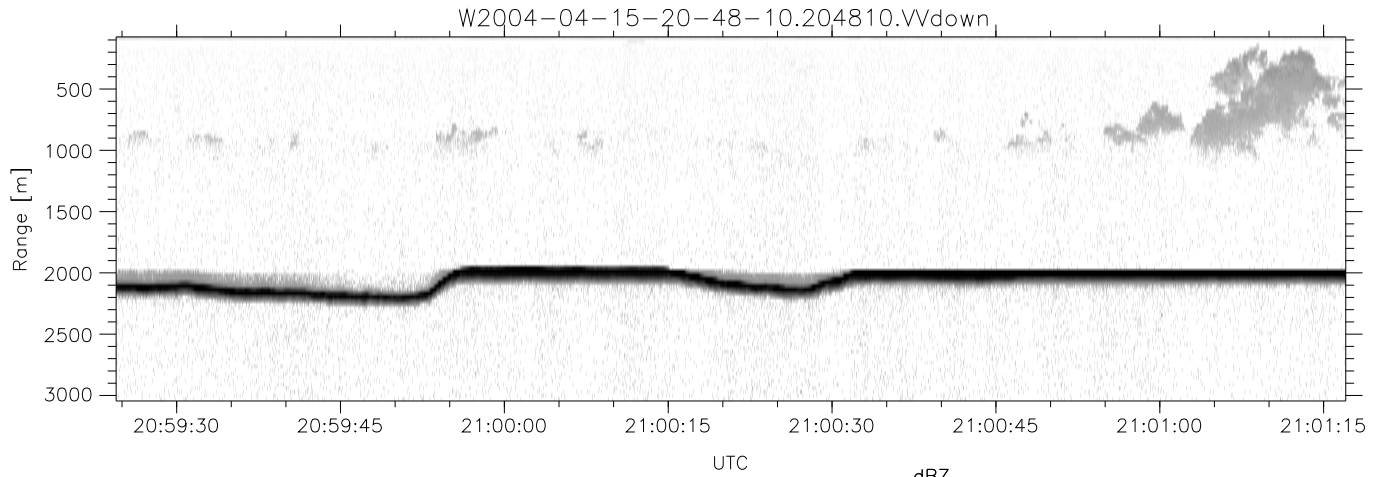
	Min	Max	Mean	Std	Varc%
hhN(dB)	-67.92	-64.35	-66.01	-75.94	10.2
vvN(dB)	-68.18	-64.32	-66.02	-75.95	10.2
hhL(dB)	-17.30	2.45	-1.19	-2.21	79.1
vvL(dB)	-11.95	6.00	3.42	1.85	69.6
ppN(m/s)	-12.85	12.70	-0.03	4.16	
ppT(m/s)	-101.5	100.30	-0.25	32.86	
hh/vv(dB)	NaN	68.74	20.52	45.25	2966
vh/hh(dB)	NaN	-5.46	-32.75	-22.31	1105
hv/vv(dB)	NaN	-32.56	-48.25	-43.56	294.
hnjmp(dB)			0.16		
vnjmp(dB)			0.16		



CIFEX 2004 Data (cal/250ns+2.5/100ns-3.5/500ns: 53.0,50.0)

W2004-04-15-20-48-10 - PPMAG4, IRIG:1/0/2
 UTC: 20:48:10.64 to 22:12:49.10, Dur: 5079s
 TimeLngth: 5078.63s, TimeInt: 28ms (35.4pps)
 TimeCor=-13.0s, PPS(min,max,med): 35,36,35
 Timeint/DSPdiff(mn,min,mx):28,28,31/28,28,29
 Prof: 2137 to 182110, NumProf(r/t): 35142/179973
 ProcTime/Recs: 20:48:10-21:04:42/0-35141
 ADacqtime: 25ms; DRate: 198.4KB/s; Flags: 0, 0, 0
 Pulse: 275ns, IFilt: 5.0MHz; ppPol: HH HV VV
 TxPol: HHVV, PRF: 20 10 20 10 kHz, NoiseFlg:4,3
 Range: Delay 75m, Spacing 30m, Gates 100
 Ave. Pulses: 84, Rng/Prof Aspect@90m/s: 11.8

	Min	Max	Mean	Std	Varc%
hhN (dB)	-67.92	-64.35	-66.01	-75.94	10.2
vvN (dB)	-68.18	-64.32	-66.02	-75.95	10.2
hhL (dB)	-17.30	2.45	-1.19	-2.21	79.1
vvL (dB)	-11.95	6.00	3.42	1.85	69.6
ppN (m/s)	-12.85	12.70	-0.03	4.16	
ppT (m/s)	-101.5	100.30	-0.25	32.86	
hh/vv (dB)	NaN	68.74	20.52	45.25	2966
vh/hh (dB)	NaN	-5.46	-32.75	-22.31	1105
hv/vv (dB)	NaN	-32.56	-48.25	-43.56	294.
hn_jmp (dB)			0.16		
vn_jmp (dB)			0.16		



CIFEX 2004 Data (cal/250ns+2.5/100ns-3.5/500ns: 53.0,50.0)

W2004-04-15-20-48-10 - PPMAG4, IRIG:1/0/2
 UTC: 20:48:10.64 to 22:12:49.10, Dur: 5079s
 TimeLngth: 5078.63s, TimeInt: 28ms (35.4pps)
 TimeCor=-13.0s, PPS(min,max,med): 35,36,35
 Timeint/DSPdiff(mn,min,mx):28,28,31/28,28,29
 Prof: 2137 to 182110, NumProf(r/t): 35142/179973
 ProcTime/Recs: 20:48:10-21:04:42/0-35141
 ADacqtime: 25ms; DRate: 198.4KB/s; Flags: 0, 0, 0
 Pulse: 275ns, IFilt: 5.0MHz; ppPol: HH HV VV
 TxPol: HHVV, PRF: 20 10 20 10 kHz, NoiseFlg:4,3
 Range: Delay 75m, Spacing 30m, Gates 100
 Ave. Pulses: 84, Rng/Prof Aspect@90m/s: 11.8

	Min	Max	Mean	Std	Varc%
hhN (dB)	-67.92	-64.35	-66.01	-75.94	10.2
vvN (dB)	-68.18	-64.32	-66.02	-75.95	10.2
hhL (dB)	-17.30	2.45	-1.19	-2.21	79.1
vvL (dB)	-11.95	6.00	3.42	1.85	69.6
ppN (m/s)	-12.85	12.70	-0.03	4.16	
ppT (m/s)	-101.5	100.30	-0.25	32.86	
hh/vv (dB)	NaN	68.74	20.52	45.25	2966
vh/hh (dB)	NaN	-5.46	-32.75	-22.31	1105
hv/vv (dB)	NaN	-32.56	-48.25	-43.56	294.
hn_jmp (dB)			0.16		
vn_jmp (dB)			0.16		