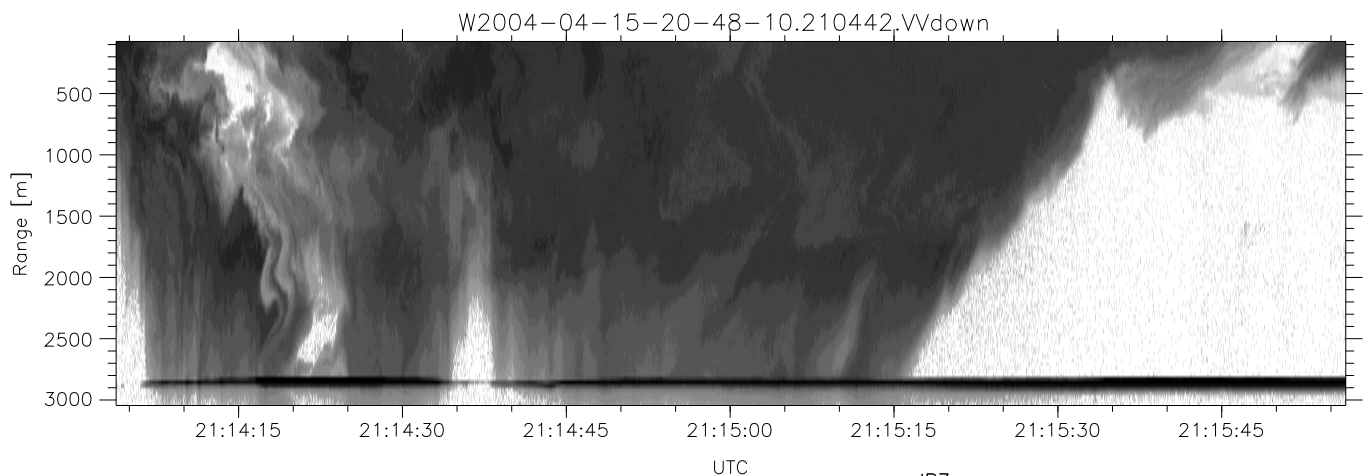
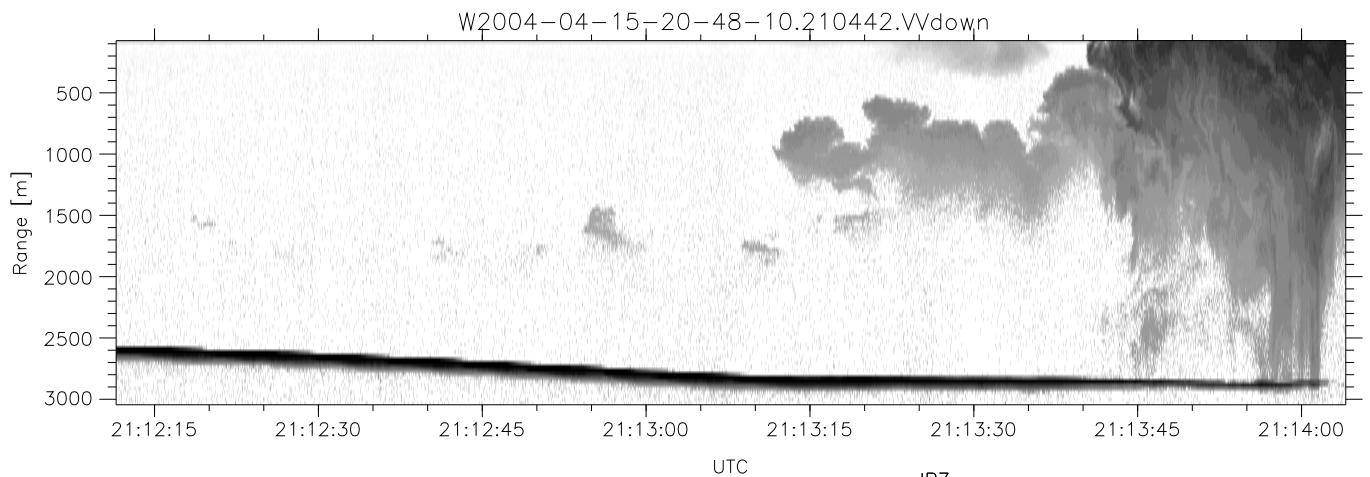
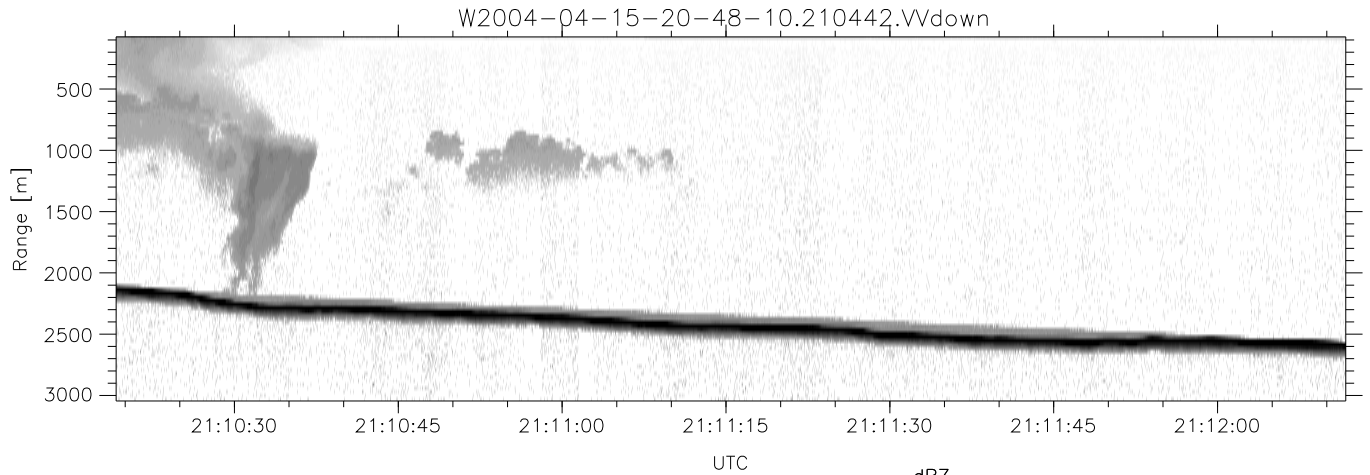


CIFEX 2004 Data (cal/250ns+2.5/100ns-3.5/500ns: 53.0,50.0)

W2004-04-15-20-48-10 - PPMAG4, IRIG:1/0/2
 UTC: 20:48:10.64 to 22:12:49.10, Dur: 5079s
 TimeLngth: 5078.63s, TimeInt: 28ms (35.4pps)
 TimeCor=-13.0s, PPS(min,max,med): 35,36,35
 Timeint/DSPdiff(mn,min,mx):28,28,28/28,28,28
 Prof: 2137 to 182110, NumProf(r/t): 35142/179973
 ProcTime/Recs: 21:04:42-21:21:13/35142-70283
 ADacqtime: 25ms; DRate: 198.4KB/s; Flags: 0, 0, 0
 Pulse: 275ns, IFfilt: 5.0MHz; ppPol: HH HV VV
 TxPol: HHVV, PRF: 20 10 20 10 kHz, Noiseflg:4,3
 Range: Delay 75m, Spacing 30m, Gates 100
 Ave. Pulses: 84, Rng/Prof Aspect@90m/s: 11.8

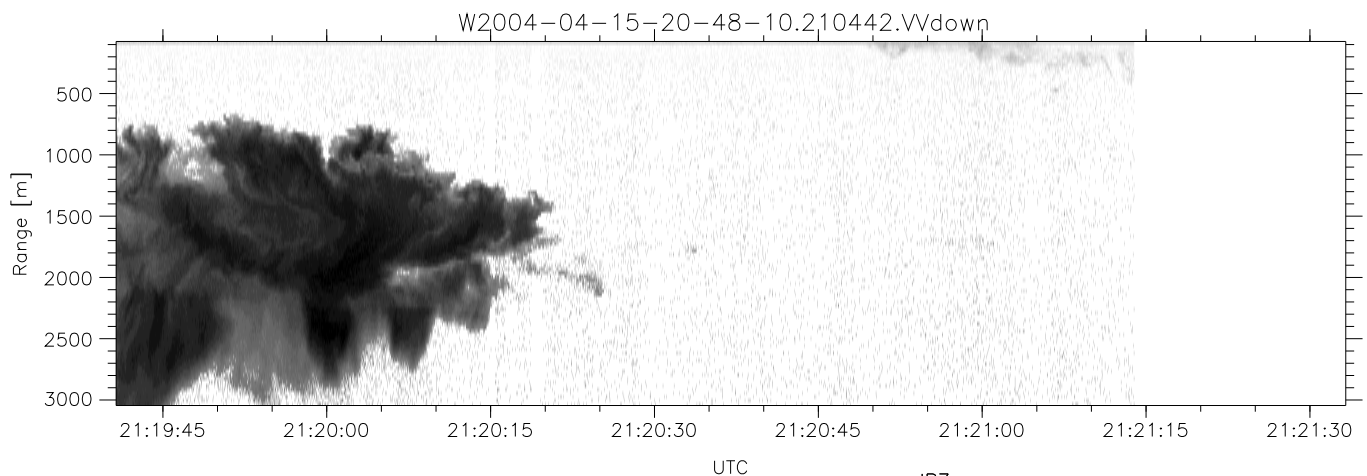
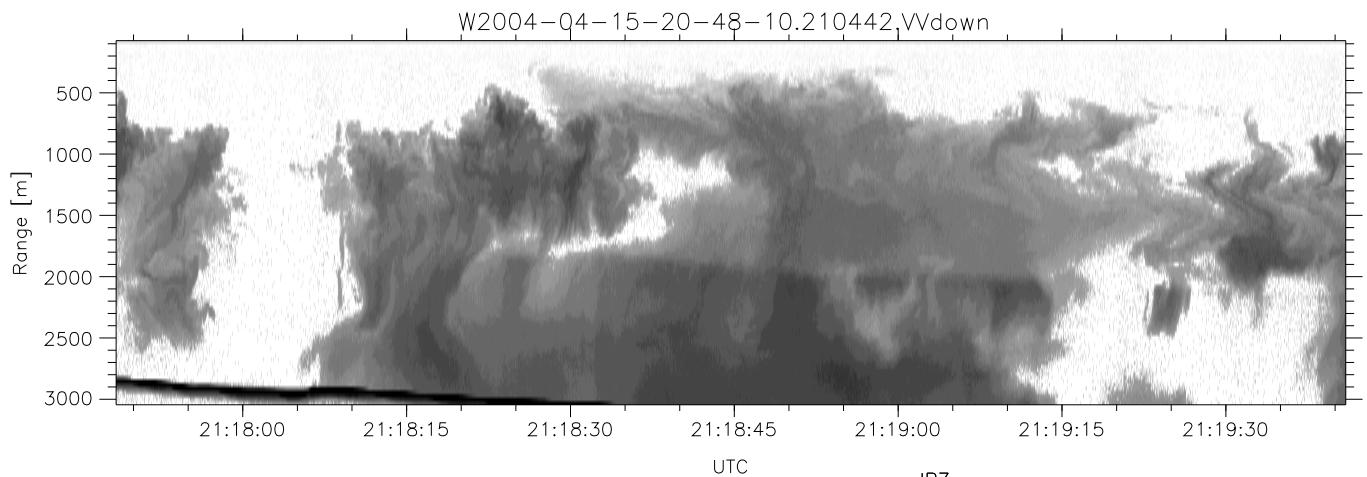
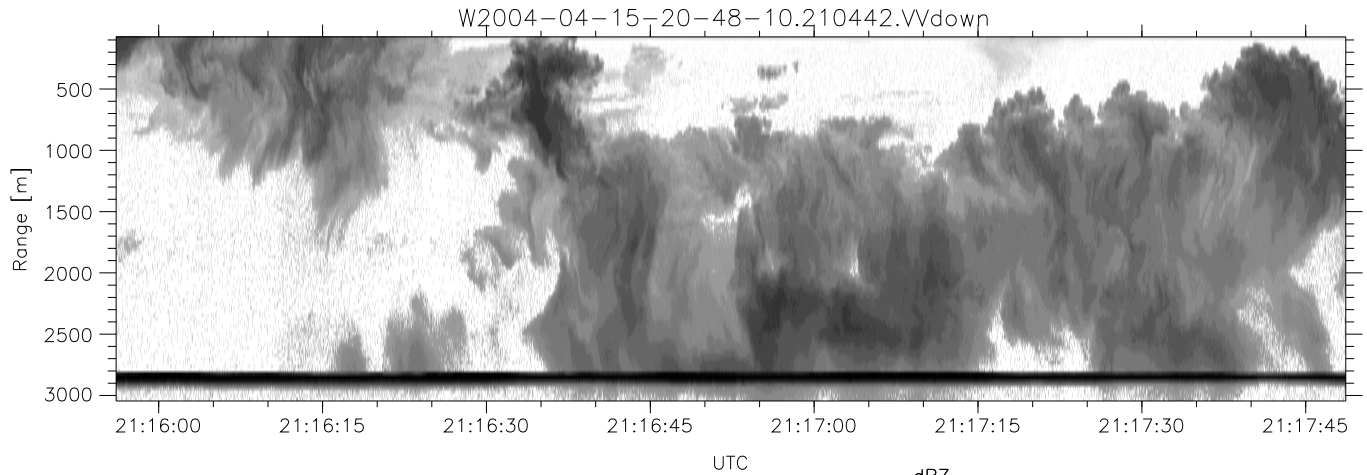
	Min	Max	Mean	Std	Varc%
hhN(dB)	-68.03	-64.27	-66.06	-75.93	10.3
vvN(dB)	-68.01	-64.43	-66.11	-75.94	10.4
hhL(dB)	-19.38	2.45	-1.34	-3.76	57.4
vvL(dB)	-14.28	6.00	0.92	-0.37	74.2
ppN(m/s)	-12.44	12.39	0.02	4.15	
ppT(m/s)	-98.28	97.92	0.15	32.76	
hh/vv(dB)	NaN	85.59	28.37	57.60	8367
vh/hh(dB)	NaN	-12.47	-40.19	-31.15	800.
hv/vv(dB)	NaN	-29.05	-47.12	-43.47	231.
hnjmp(dB)			0.15		
vnjmp(dB)			0.17		



CIFEX 2004 Data (cal/250ns+2.5/100ns-3.5/500ns: 53.0,50.0)

W2004-04-15-20-48-10 - PPMAG4, IRIG:1/0/2
 UTC: 20:48:10.64 to 22:12:49.10, Dur: 5079s
 TimeLngth: 5078.63s, TimeInt: 28ms (35.4pps)
 TimeCor=-13.0s, PPS(min,max,med): 35,36,35
 Timeint/DSPdiff(mn,min,mx):28,28,28/28,28,28
 Prof: 2137 to 182110, NumProf(r/t): 35142/179973
 ProcTime/Recs: 21:04:42-21:21:13/35142-70283
 ADacqtime: 25ms; DRate: 198.4KB/s; Flags: 0, 0, 0
 Pulse: 275ns, IFilt: 5.0MHz; ppPol: HH HV VV
 TxPol: HHVV, PRF: 20 10 20 10 kHz, NoiseFlg:4,3
 Range: Delay 75m, Spacing 30m, Gates 100
 Ave. Pulses: 84, Rng/Prof Aspect@90m/s: 11.8

	Min	Max	Mean	Std	Varc%
hhN(dB)	-68.03	-64.27	-66.06	-75.93	10.3
vvN(dB)	-68.01	-64.43	-66.11	-75.94	10.4
hhL(dB)	-19.38	2.45	-1.34	-3.76	57.4
vvL(dB)	-14.28	6.00	0.92	-0.37	74.2
ppN(m/s)	-12.44	12.39	0.02	4.15	
ppT(m/s)	-98.28	97.92	0.15	32.76	
hh/vv(dB)	NaN	85.59	28.37	57.60	8367
vh/hh(dB)	NaN	-12.47	-40.19	-31.15	800.
hv/vv(dB)	NaN	-29.05	-47.12	-43.47	231.
hnjmp(dB)			0.15		
vnjmp(dB)			0.17		



CIFEX 2004 Data (cal/250ns+2.5/100ns-3.5/500ns: 53.0,50.0)

W2004-04-15-20-48-10 - PPMAG4, IRIG:1/0/2
 UTC: 20:48:10.64 to 22:12:49.10, Dur: 5079s
 TimeLngth: 5078.63s, TimeInt: 28ms (35.4pps)
 TimeCor=-13.0s, PPS(min,max,med): 35,36,35
 Timeint/DSPdiff(mn,min,mx):28,28,28/28,28,28
 Prof: 2137 to 182110, NumProf(r/t): 35142/179973
 ProcTime/Recs: 21:04:42-21:21:13/35142-70283
 ADacqtime: 25ms; DRate: 198.4KB/s; Flags: 0, 0, 0
 Pulse: 275ns, IFfilt: 5.0MHz; ppPol: HH HV VV
 TxPol: HHVV, PRF: 20 10 20 10 kHz, NoiseFlg:4,3
 Range: Delay 75m, Spacing 30m, Gates 100
 Ave. Pulses: 84, Rng/Prof Aspect@90m/s: 11.8

	Min	Max	Mean	Std	Varc%
hhN(dB)	-68.03	-64.27	-66.06	-75.93	10.3
vvN(dB)	-68.01	-64.43	-66.11	-75.94	10.4
hhL(dB)	-19.38	2.45	-1.34	-3.76	57.4
vvL(dB)	-14.28	6.00	0.92	-0.37	74.2
ppN(m/s)	-12.44	12.39	0.02	4.15	
ppT(m/s)	-98.28	97.92	0.15	32.76	
hh/vv(dB)	NaN	85.59	28.37	57.60	8367
vh/hh(dB)	NaN	-12.47	-40.19	-31.15	800.
hv/vv(dB)	NaN	-29.05	-47.12	-43.47	231.
hnjmp(dB)			0.15		
vnjmp(dB)			0.17		