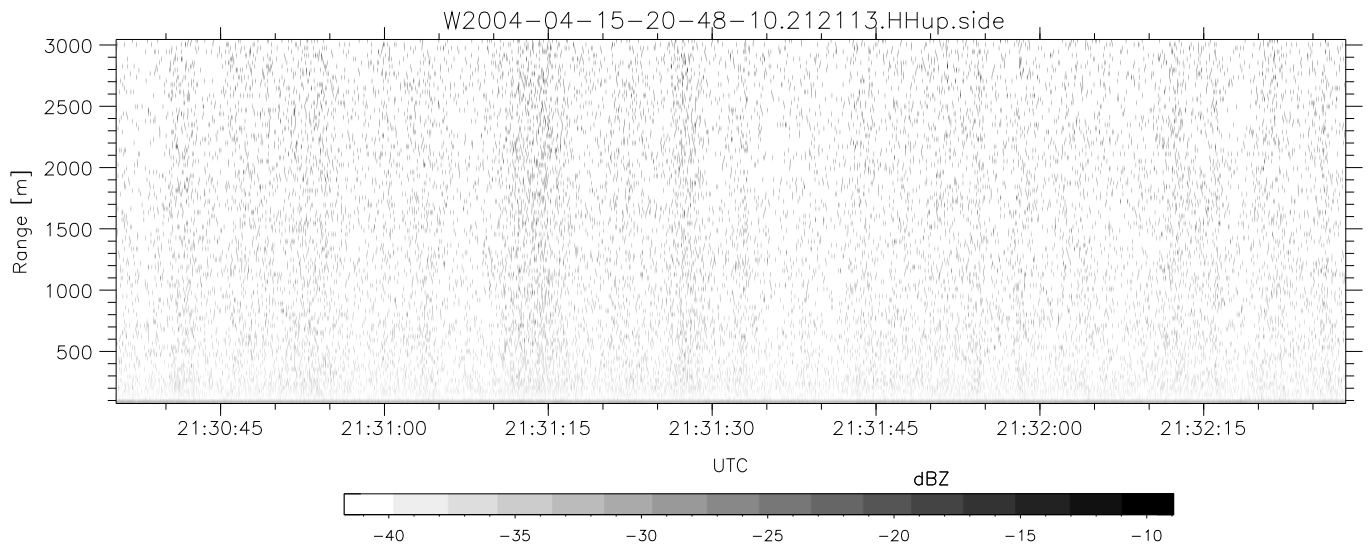
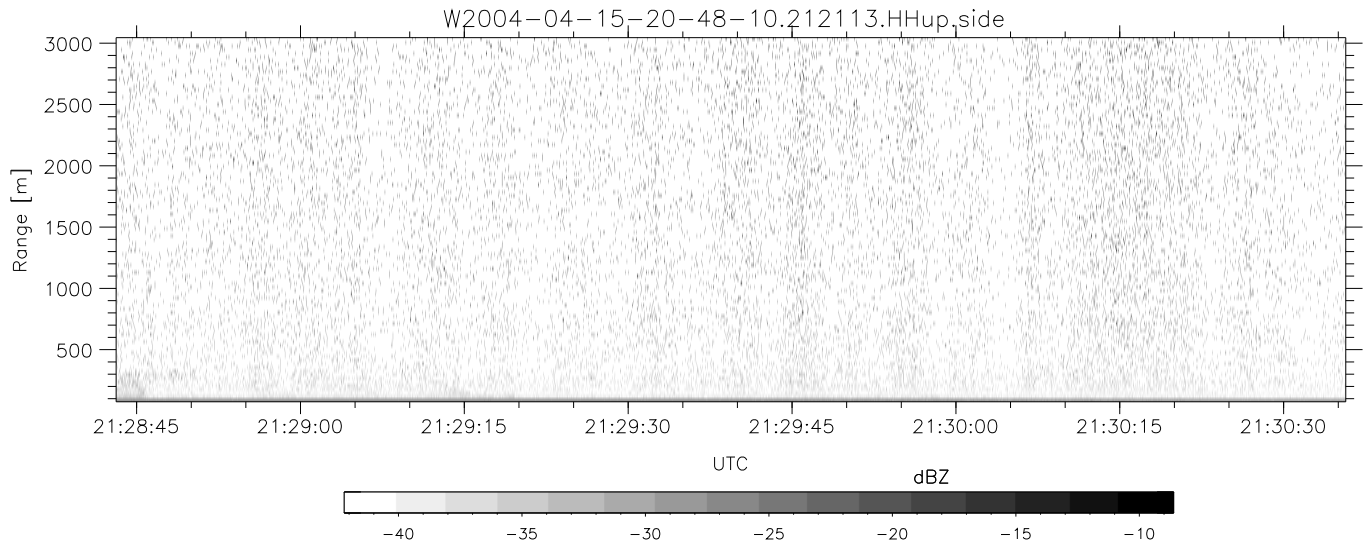
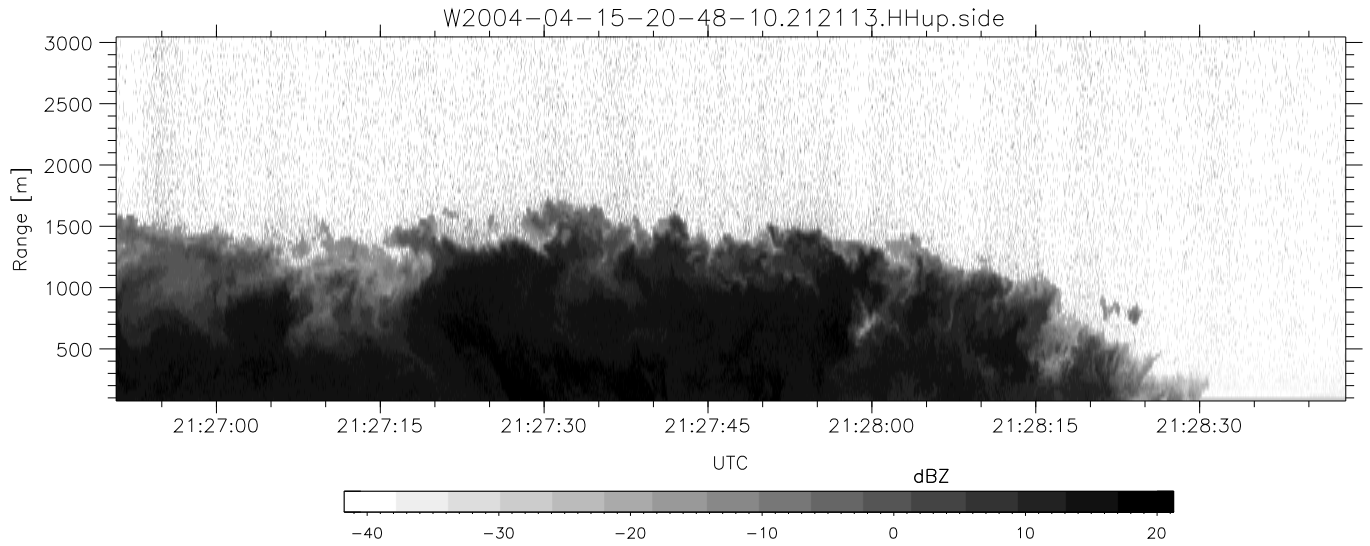


CIFEX 2004 Data (cal/250ns+2.5/100ns-3.5/500ns: 53.0,50.0)

W2004-04-15-20-48-10 - PPMAG4, IRIG:1/0/2  
 UTC: 20:48:10.64 to 22:12:49.10, Dur: 5079s  
 TimeLngth: 5078.46s, TimeInt: 28ms (35.4pps)  
 TimeCor=-13.0s, PPS(min,max,med): 35,36,35  
 Timeint/DSPdiff(mn,min,mx):28,28,32/28,28,28  
 Prof: 2137 to 182110, NumProf(r/t): 35142/179973  
 ProcTime/Recs: 21:21:13-21:37:45/70284-105425  
 ADacqtime: 25ms; DRate: 198.4KB/s; Flags: 0, 0, 0  
 Pulse: 275ns, IFilt: 5.0MHz; ppPol: HH HV VV  
 TxPol: HHVV, PRF: 20 10 20 10 kHz, NoiseFlg:4,2  
 Range: Delay 75m, Spacing 30m, Gates 100  
 Ave. Pulses: 84, Rng/Prof Aspect@90m/s: 11.8

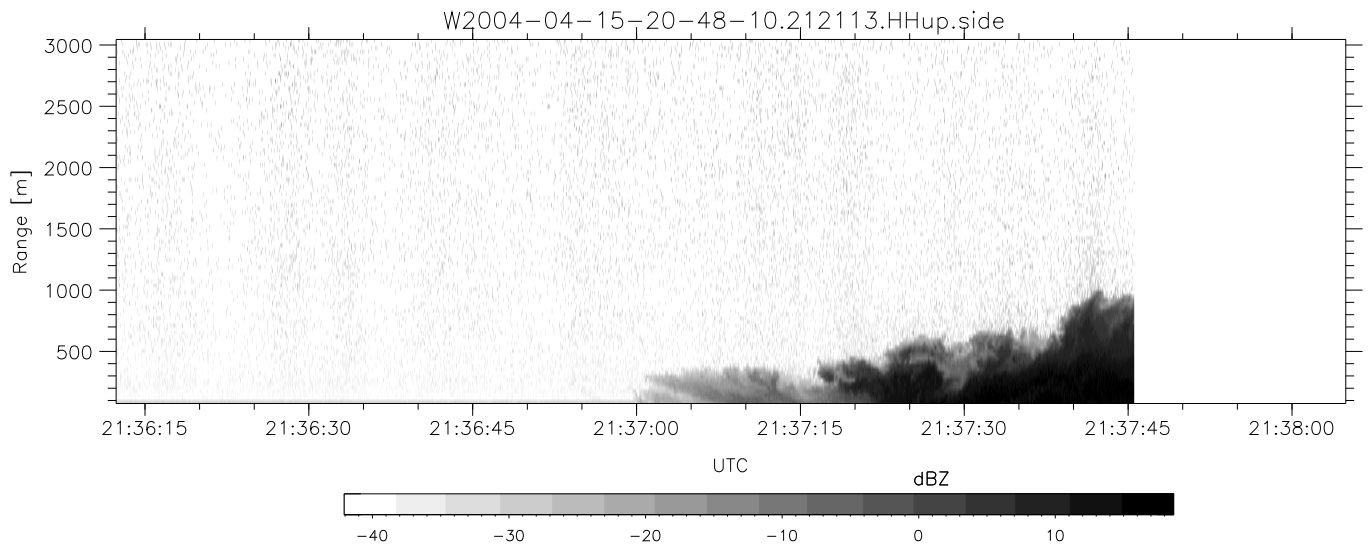
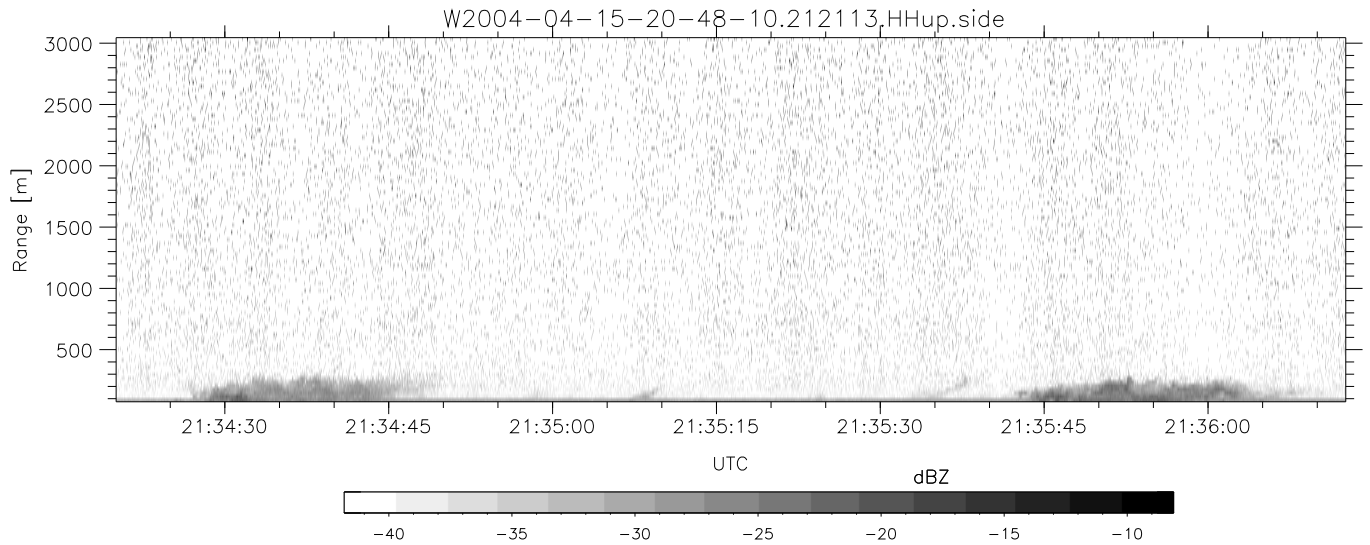
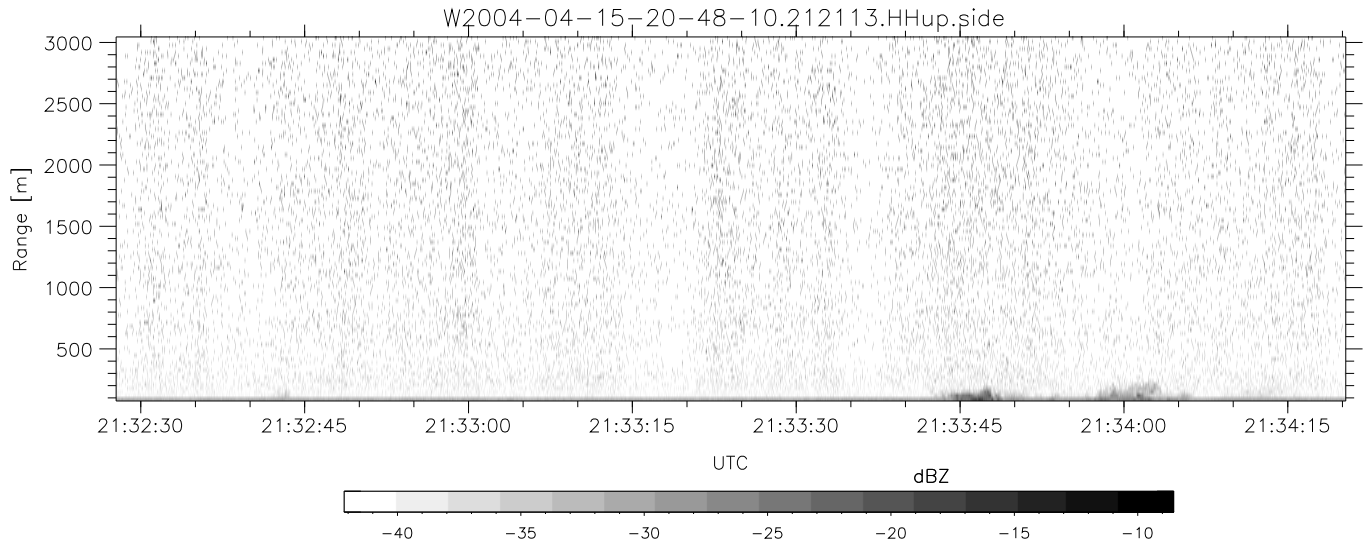
	Min	Max	Mean	Std	Varc%
hhN (dB)	-68.01	-64.49	-66.17	-76.15	10.1
vvN (dB)	-68.18	-64.22	-66.18	-75.86	10.8
hhL (dB)	-7.69	-0.16	-4.07	-8.95	32.5
vvL (dB)	-14.81	5.87	0.31	-1.10	72.2
ppN (m/s)	-12.48	12.50	-0.05	4.15	
ppT (m/s)	-98.56	98.74	-0.40	32.81	
hh/vv (dB)	NaN	61.85	12.94	34.84	1551
vh/hh (dB)	NaN	-27.41	-39.32	-38.23	128.
hv/vv (dB)	NaN	-33.81	-47.02	-43.72	214.
hn_jmp (dB)				0.15	
vn_jmp (dB)				0.16	



CIFEX 2004 Data (cal/250ns+2.5/100ns-3.5/500ns: 53.0,50.0)

W2004-04-15-20-48-10 - PPMAG4, IRIG:1/0/2  
 UTC: 20:48:10.64 to 22:12:49.10, Dur: 5079s  
 TimeLngth: 5078.46s, TimeInt: 28ms (35.4pps)  
 TimeCor=-13.0s, PPS(min,max,med): 35,36,35  
 Timeint/DSPdiff(mn,min,mx):28,28,32/28,28,28  
 Prof: 2137 to 182110, NumProf(r/t): 35142/179973  
 ProcTime/Recs: 21:21:13-21:37:45/70284-105425  
 ADacqtime: 25ms; DRate: 198.4KB/s; Flags: 0, 0, 0  
 Pulse: 275ns, IFilt: 5.0MHz; ppPol: HH HV VV  
 TxPol: HHVV, PRF: 20 10 20 10 kHz, NoiseFlg:4,2  
 Range: Delay 75m, Spacing 30m, Gates 100  
 Ave. Pulses: 84, Rng/Prof Aspect@90m/s: 11.8

	Min	Max	Mean	Std	Varc%
hhN(dB)	-68.01	-64.49	-66.17	-76.15	10.1
vvN(dB)	-68.18	-64.22	-66.18	-75.86	10.8
hhL(dB)	-7.69	-0.16	-4.07	-8.95	32.5
vvL(dB)	-14.81	5.87	0.31	-1.10	72.2
ppN(m/s)	-12.48	12.50	-0.05	4.15	
ppT(m/s)	-98.56	98.74	-0.40	32.81	
hh/vv(dB)	NaN	61.85	12.94	34.84	1551
vh/hh(dB)	NaN	-27.41	-39.32	-38.23	128.
hv/vv(dB)	NaN	-33.81	-47.02	-43.72	214.
hh/vv(dB)				0.15	
hh/vv(dB)				0.16	



CIFEX 2004 Data (cal/250ns+2.5/100ns-3.5/500ns: 53.0,50.0)

W2004-04-15-20-48-10 - PPMAG4, IRIG:1/0/2  
 UTC: 20:48:10.64 to 22:12:49.10, Dur: 5079s  
 TimeLngth: 5078.46s, TimeInt: 28ms (35.4pps)  
 TimeCor=-13.0s, PPS(min,max,med): 35,36,35  
 Timeint/DSPdiff(mn,min,mx):28,28,32/28,28,28  
 Prof: 2137 to 182110, NumProf(r/t): 35142/179973  
 ProcTime/Recs: 21:21:13-21:37:45/70284-105425  
 ADacqtime: 25ms; DRate: 198.4KB/s; Flags: 0, 0, 0  
 Pulse: 275ns, IFilt: 5.0MHz; ppPol: HH HV VV  
 TxPol: HHVV, PRF: 20 10 20 10 kHz, NoiseFlg:4,2  
 Range: Delay 75m, Spacing 30m, Gates 100  
 Ave. Pulses: 84, Rng/Prof Aspect@90m/s: 11.8

	Min	Max	Mean	Std	Varc%
hhN(dB)	-68.01	-64.49	-66.17	-76.15	10.1
vvN(dB)	-68.18	-64.22	-66.18	-75.86	10.8
hhL(dB)	-7.69	-0.16	-4.07	-8.95	32.5
vvL(dB)	-14.81	5.87	0.31	-1.10	72.2
ppN(m/s)	-12.48	12.50	-0.05	4.15	
ppT(m/s)	-98.56	98.74	-0.40	32.81	
hh/vv(dB)	NaN	61.85	12.94	34.84	1551
vh/hh(dB)	NaN	-27.41	-39.32	-38.23	128.
hv/vv(dB)	NaN	-33.81	-47.02	-43.72	214.
hnjmp(dB)				0.15	
vnjmp(dB)				0.16	