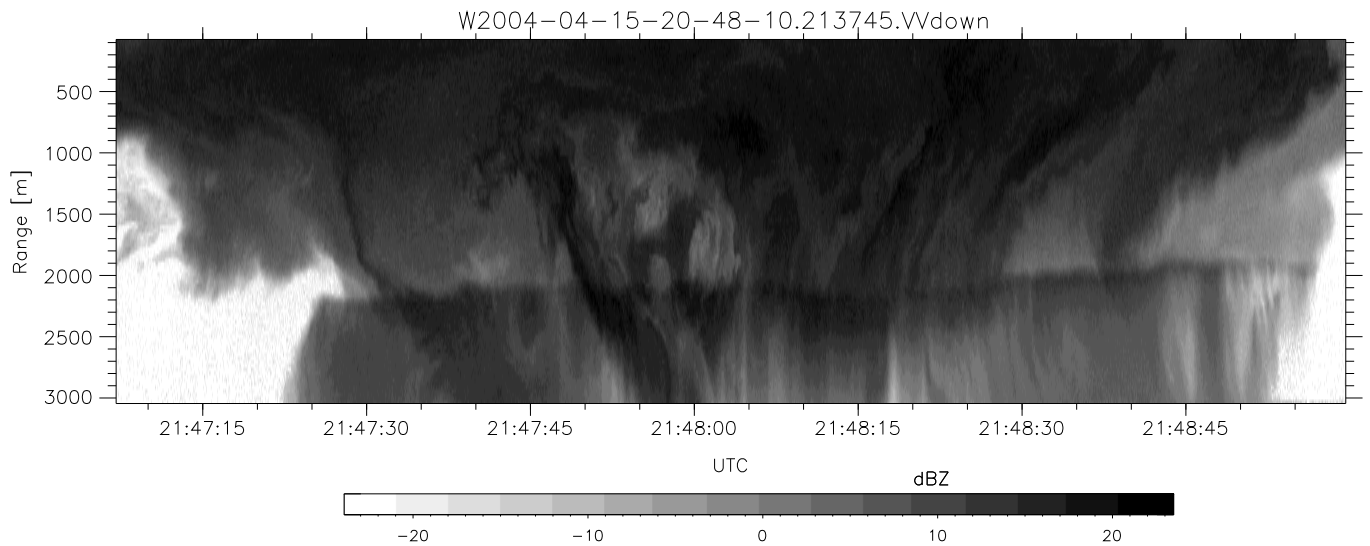
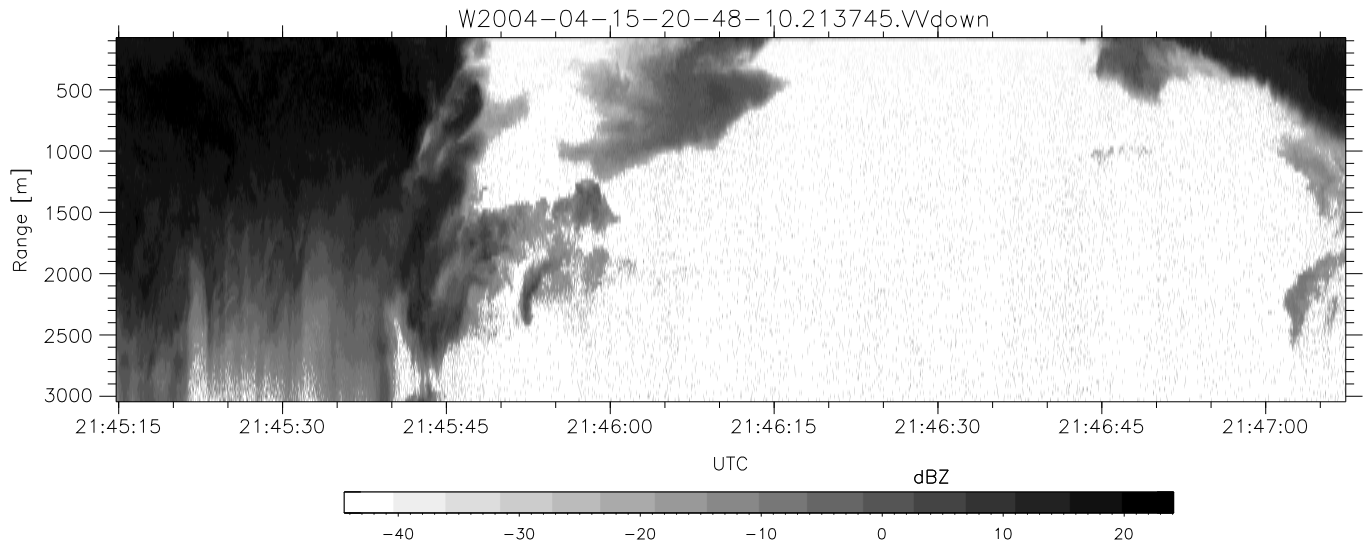
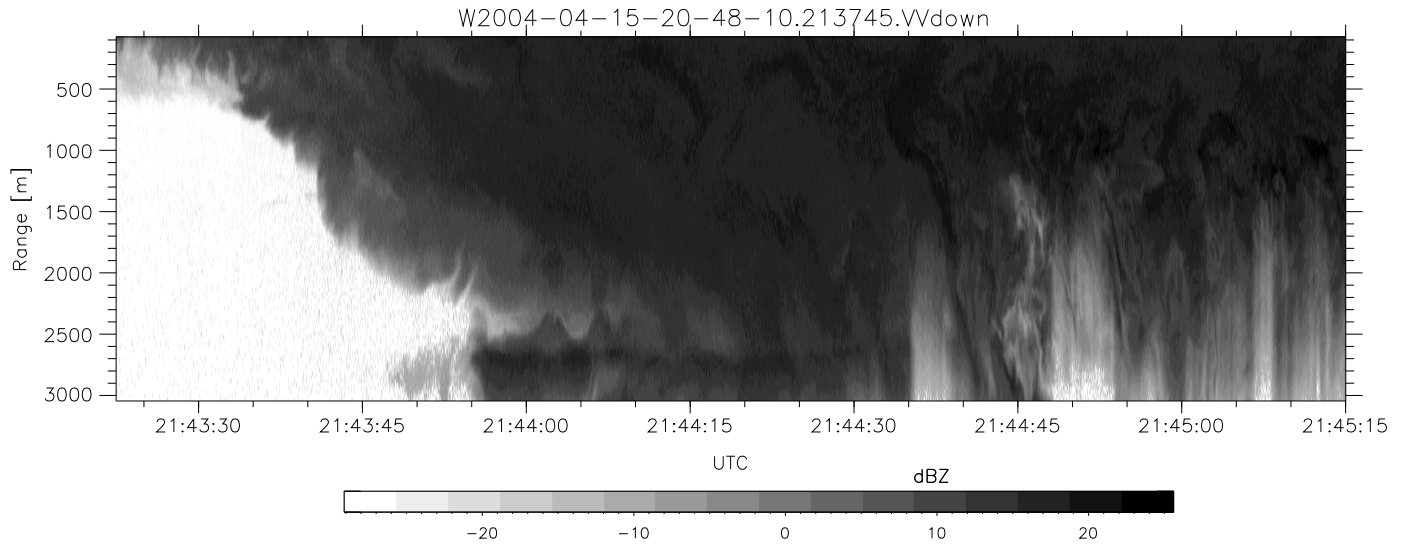


CIFEX 2004 Data (cal/250ns+2.5/100ns-3.5/500ns: 53.0,50.0)

W2004-04-15-20-48-10 - PPMAG4, IRIG:1/0/2
 UTC: 20:48:10.64 to 22:12:49.10, Dur: 5079s
 TimeLngth: 5078.46s, TimeInt: 28ms (35.4pps)
 TimeCor=-13.0s, PPS(min,max,med): 35,36,35
 Timeint/DSPdiff(mn,min,mx):28,28,28/28,28,28
 Prof: 2137 to 182110, NumProf(r/t): 35142/179973
 ProcTime/Recs: 21:37:45-21:54:17/105426-140567
 ADacqtime: 25ms; DRate: 198.4KB/s; Flags: 0, 0, 0
 Pulse: 275ns, IFilt: 5.0MHz; ppPol: HH HV VV
 TxPol: HHVV, PRF: 20 10 20 10 kHz, NoiseFlg:4,3
 Range: Delay 75m, Spacing 30m, Gates 100
 Ave. Pulses: 84, Rng/Prof Aspect@90m/s: 11.8

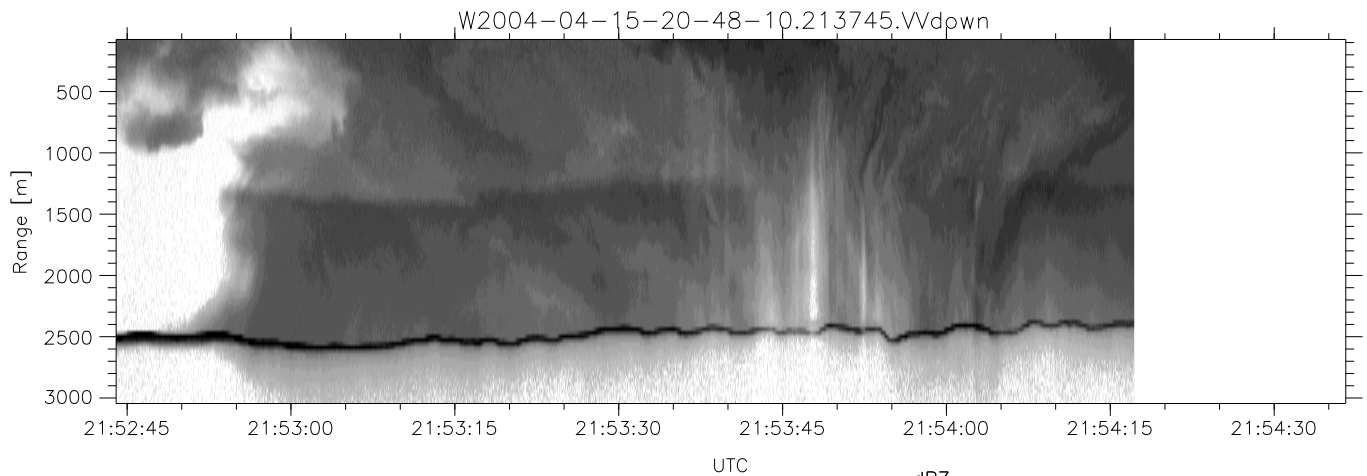
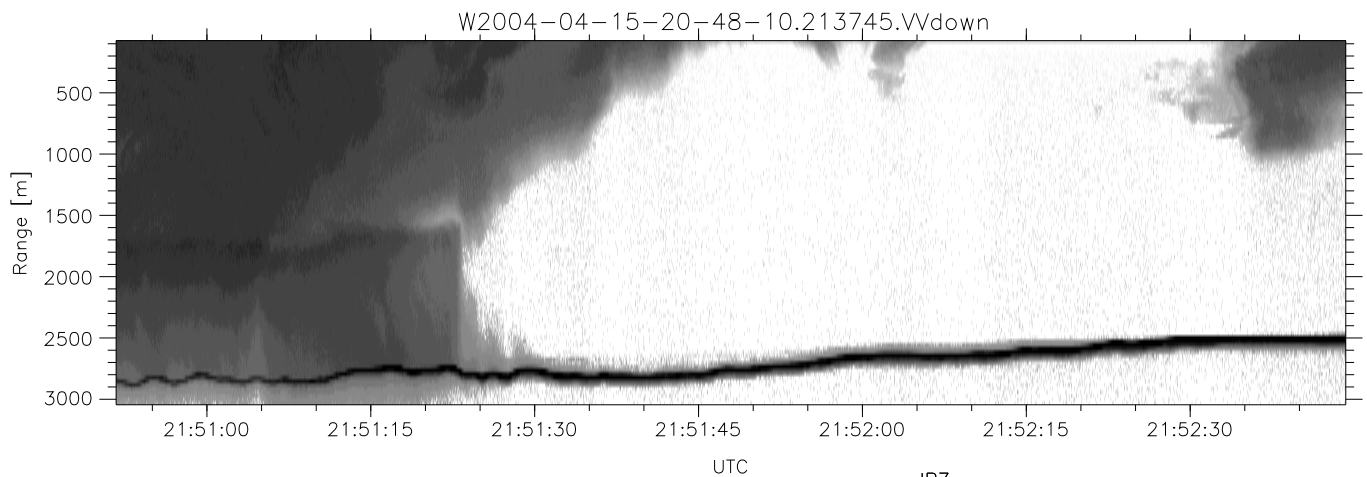
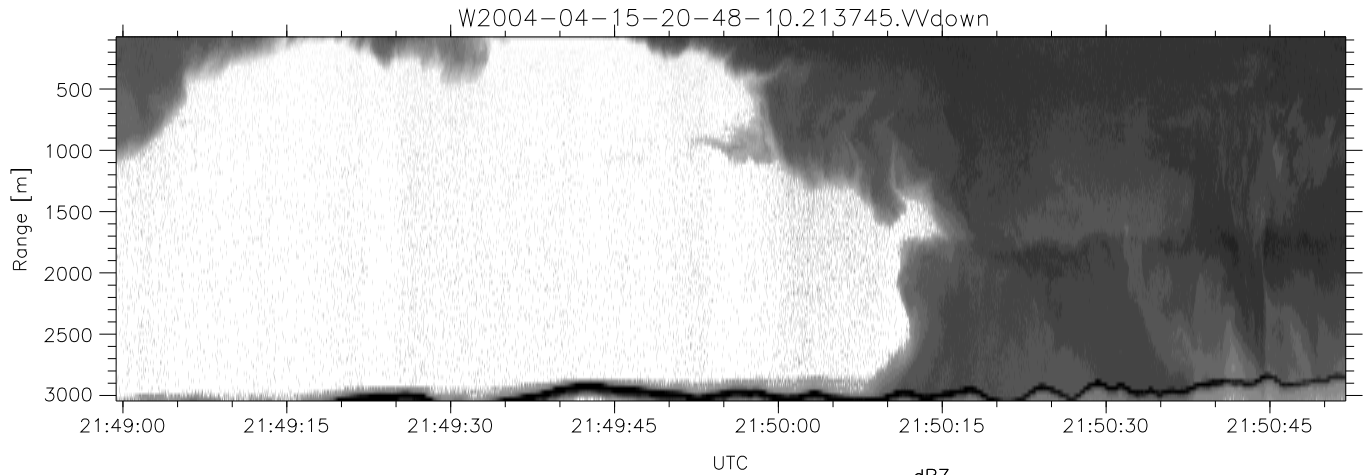
	Min	Max	Mean	Std	Varc%
hhN (dB)	-67.83	-64.28	-65.95	-75.89	10.1
vvN (dB)	-67.95	-64.28	-66.00	-75.76	10.6
hhL (dB)	-6.21	2.64	-1.24	-5.17	40.5
vvL (dB)	-15.46	5.92	0.95	-0.62	69.7
ppN (m/s)	-12.87	12.67	0.02	4.15	
ppT (m/s)	-101.6	100.09	0.15	32.81	
hh/vv (dB)	NaN	86.57	NaN	60.50	-158
vh/hh (dB)	NaN	-27.82	-44.01	-38.61	347.
hv/vv (dB)	NaN	-30.90	-50.02	-43.66	432.
hnjmp (dB)				0.15	
vnjmp (dB)				0.14	



CIFEX 2004 Data (cal/250ns+2.5/100ns-3.5/500ns: 53.0,50.0)

W2004-04-15-20-48-10 - PPMAG4, IRIG:1/0/2
 UTC: 20:48:10.64 to 22:12:49.10, Dur: 5079s
 TimeLngth: 5078.46s, TimeInt: 28ms (35.4pps)
 TimeCor=-13.0s, PPS(min,max,med): 35,36,35
 Timeint/DSPdiff(mn,min,mx):28,28,28/28,28,28
 Prof: 2137 to 182110, NumProf(r/t): 35142/179973
 ProcTime/Recs: 21:37:45-21:54:17/105426-140567
 ADacqtime: 25ms; DRate: 198.4KB/s; Flags: 0, 0, 0
 Pulse: 275ns, IFilt: 5.0MHz; ppPol: HH HV VV
 TxPol: HHVV, PRF: 20 10 20 10 kHz, NoiseFlg:4,3
 Range: Delay 75m, Spacing 30m, Gates 100
 Ave. Pulses: 84, Rng/Prof Aspect@90m/s: 11.8

	Min	Max	Mean	Std	Varc%
hhN (dB)	-67.83	-64.28	-65.95	-75.89	10.1
vvN (dB)	-67.95	-64.28	-66.00	-75.76	10.6
hhL (dB)	-6.21	2.64	-1.24	-5.17	40.5
vvL (dB)	-15.46	5.92	0.95	-0.62	69.7
ppN (m/s)	-12.87	12.67	0.02	4.15	
ppT (m/s)	-101.6	100.09	0.15	32.81	
hh/vv (dB)	NaN	86.57	NaN	60.50	-158
vh/hh (dB)	NaN	-27.82	-44.01	-38.61	347.
hv/vv (dB)	NaN	-30.90	-50.02	-43.66	432.
hn_jmp (dB)				0.15	
vn_jmp (dB)				0.14	



CIFEX 2004 Data (cal/250ns+2.5/100ns-3.5/500ns: 53.0,50.0)

W2004-04-15-20-48-10 - PPMAG4, IRIG:1/0/2
 UTC: 20:48:10.64 to 22:12:49.10, Dur: 5079s
 TimeLngth: 5078.46s, TimeInt: 28ms (35.4pps)
 TimeCor=-13.0s, PPS(min,max,med): 35,36,35
 Timeint/DSPdiff(mn,min,mx):28,28,28/28,28,28
 Prof: 2137 to 182110, NumProf(r/t): 35142/179973
 ProcTime/Recs: 21:37:45-21:54:17/105426-140567
 ADacqtime: 25ms; DRate: 198.4KB/s; Flags: 0, 0, 0
 Pulse: 275ns, IFfilt: 5.0MHz; ppPol: HH HV VV
 TxPol: HHVV, PRF: 20 10 20 10 kHz, NoiseFlg:4,3
 Range: Delay 75m, Spacing 30m, Gates 100
 Ave. Pulses: 84, Rng/Prof Aspect@90m/s: 11.8

	Min	Max	Mean	Std	Varc%
hhN (dB)	-67.83	-64.28	-65.95	-75.89	10.1
vvN (dB)	-67.95	-64.28	-66.00	-75.76	10.6
hhL (dB)	-6.21	2.64	-1.24	-5.17	40.5
vvL (dB)	-15.46	5.92	0.95	-0.62	69.7
ppN (m/s)	-12.87	12.67	0.02	4.15	
ppT (m/s)	-101.6	100.09	0.15	32.81	
hh/vv (dB)	NaN	86.57	NaN	60.50	-158
vh/hh (dB)	NaN	-27.82	-44.01	-38.61	347.
hv/vv (dB)	NaN	-30.90	-50.02	-43.66	432.
hn_jmp (dB)				0.15	
vn_jmp (dB)				0.14	