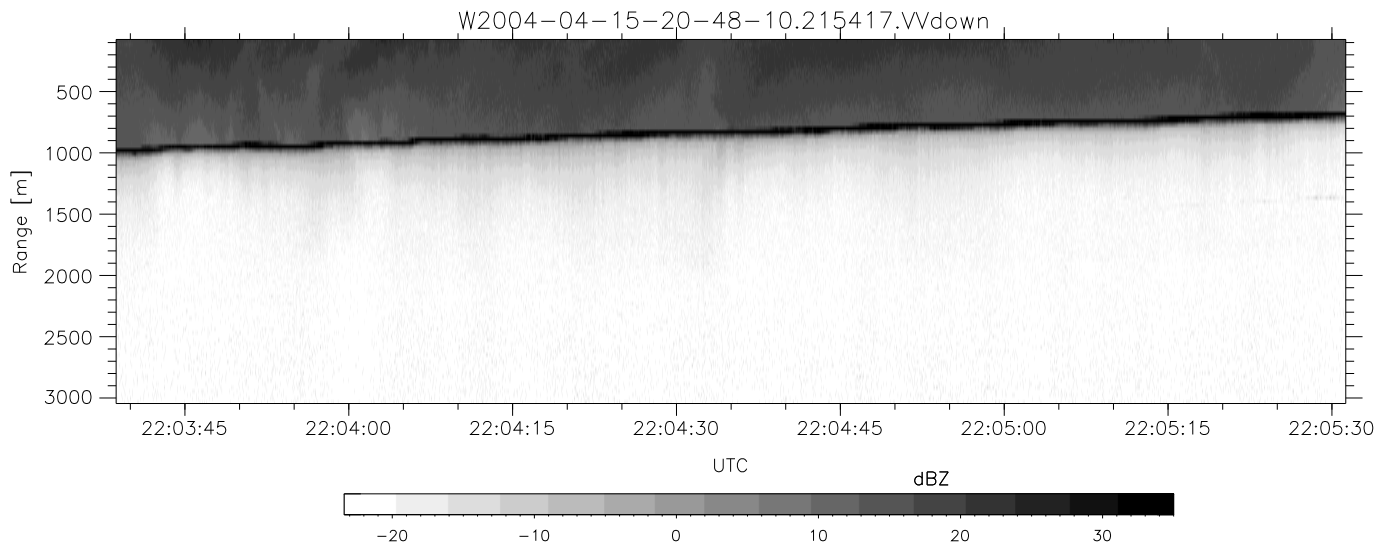
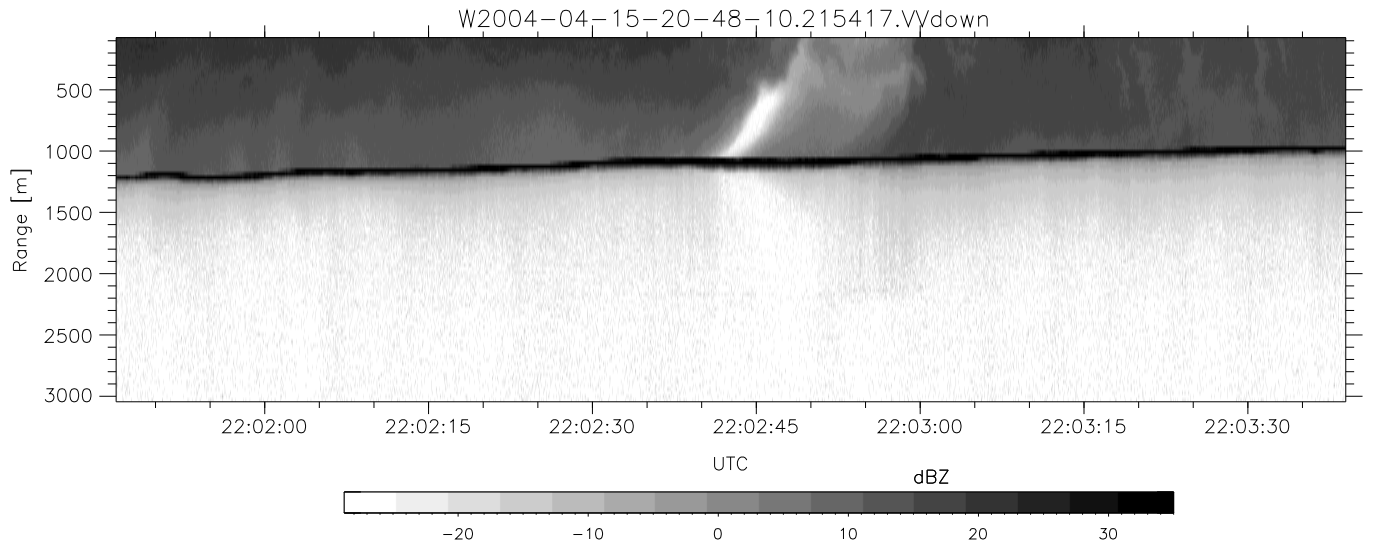
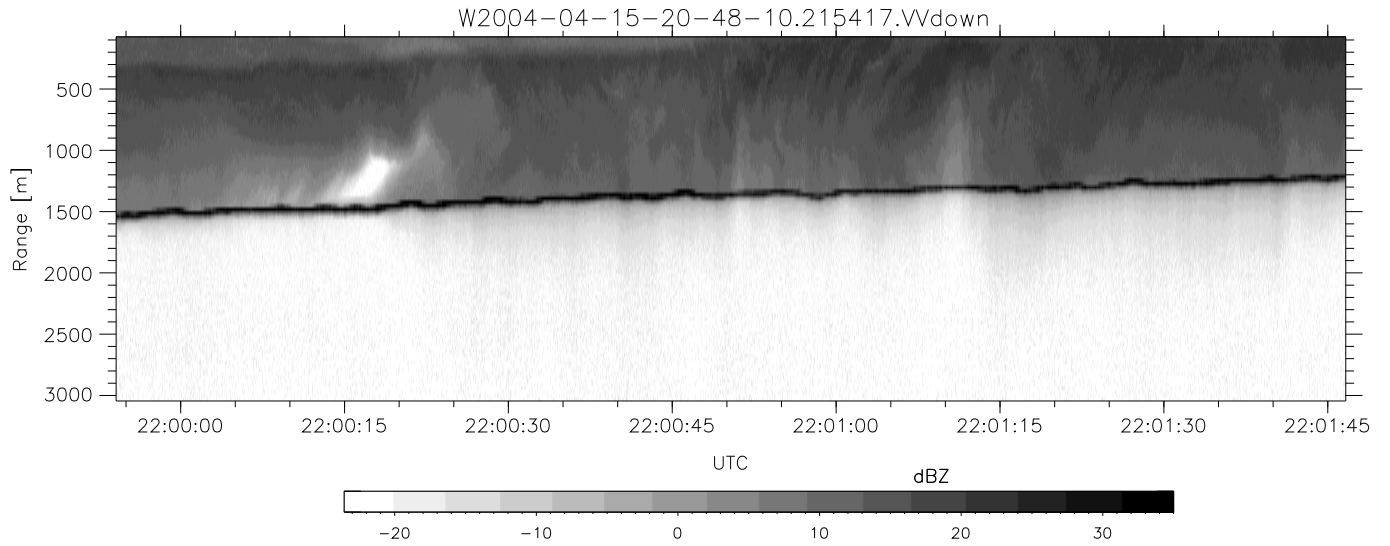


CIFEX 2004 Data (cal/250ns+2.5/100ns-3.5/500ns: 53.0,50.0)

W2004-04-15-20-48-10 - PPMAG4, IRIG:1/0/2  
 UTC: 20:48:10.64 to 22:12:49.10, Dur: 5079s  
 TimeLngth: 5078.46s, TimeInt: 28ms (35.4pps)  
 TimeCor=-13.0s, PPS(min,max,med): 35,36,35  
 Timeint/DSPdiff(mn,min,mx):28,28,30/28,28,28  
 Prof: 2137 to 182110, NumProf(r/t): 35142/179973  
 ProcTime/Recs: 21:54:17-22:10:48/140568-175709  
 ADacqtime: 25ms; DRate: 198.4KB/s; Flags: 0, 0, 0  
 Pulse: 275ns, IFfilt: 5.0MHz; ppPol: HH HV VV  
 TxPol: HHVV, PRF: 20 10 20 10 kHz, Noiseflg:1,3  
 Range: Delay 75m, Spacing 30m, Gates 100  
 Ave. Pulses: 84, Rng/Prof Aspect@90m/s: 11.8

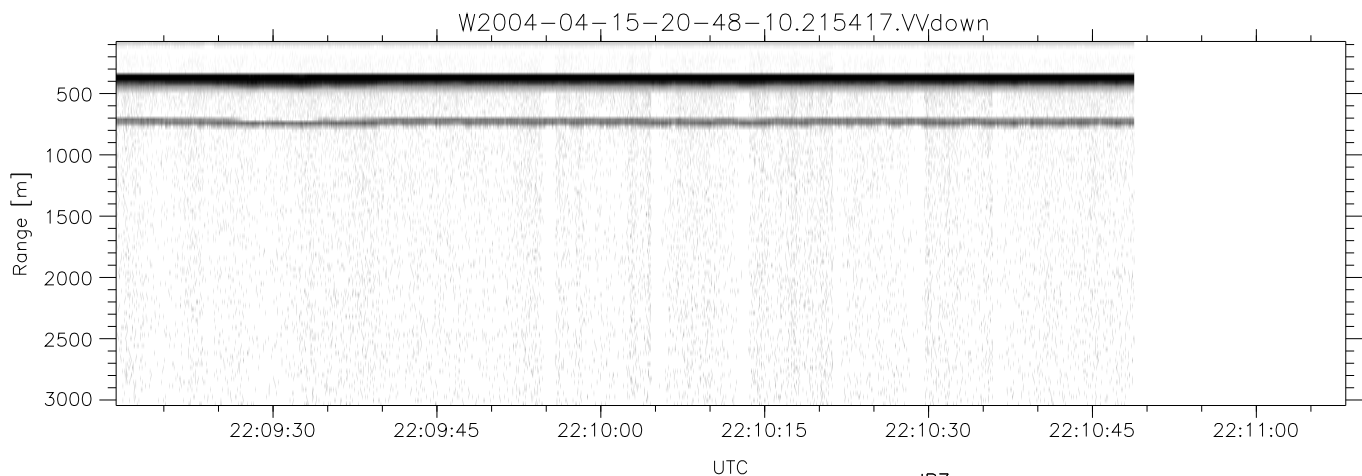
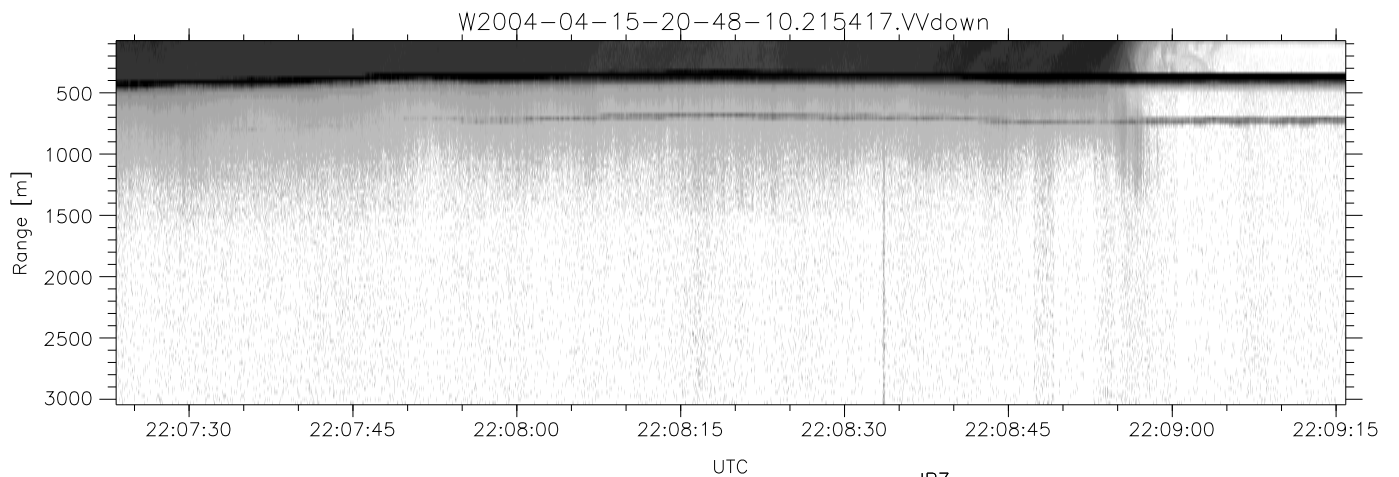
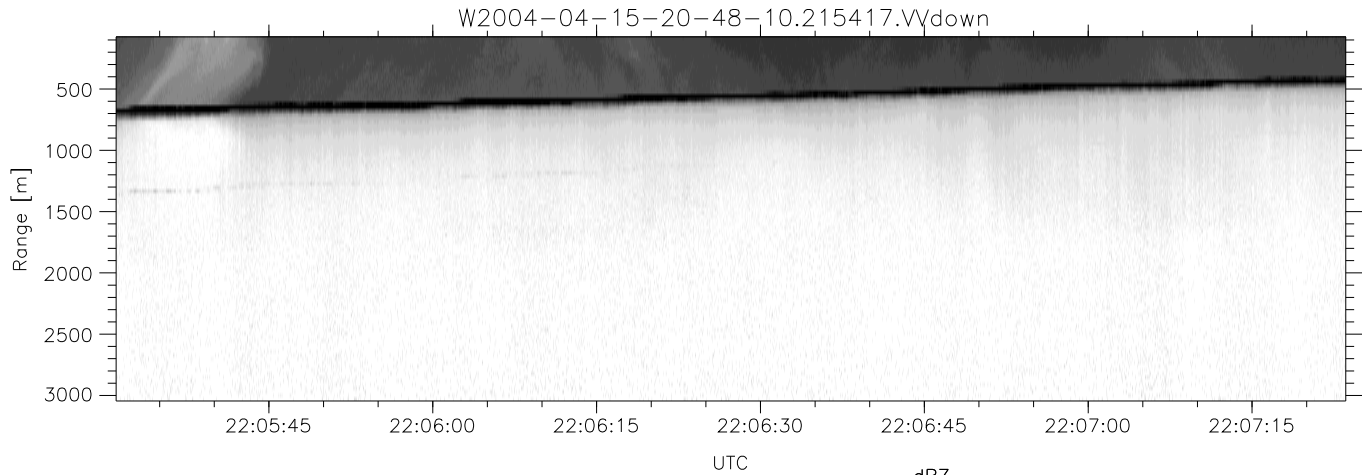
	Min	Max	Mean	Std	Varc%
hhN (dB)	-67.66	-64.24	-65.72	-75.73	10.0
vvN (dB)	-67.99	-64.04	-65.97	-75.81	10.4
hhL (dB)	-23.28	3.20	-1.44	-2.58	76.9
vvL (dB)	-15.20	6.00	4.20	1.65	55.5
ppN (m/s)	-12.73	12.55	-0.05	4.16	
ppT (m/s)	-100.5	99.13	-0.40	32.86	
hh/vv (dB)	NaN	81.62	NaN	55.74	-422
vh/hh (dB)	NaN	-1.04	-36.21	-24.23	1576
hv/vv (dB)	NaN	-27.78	-48.67	-43.53	326.
hn_jmp (dB)				0.14	
vn_jmp (dB)				0.15	



CIFEX 2004 Data (cal/250ns+2.5/100ns-3.5/500ns: 53.0,50.0)

W2004-04-15-20-48-10 - PPMAG4, IRIG:1/0/2  
 UTC: 20:48:10.64 to 22:12:49.10, Dur: 5079s  
 TimeLngth: 5078.46s, TimeInt: 28ms (35.4pps)  
 TimeCor=-13.0s, PPS(min,max,med): 35,36,35  
 Timeint/DSPdiff(mn,min,mx):28,28,30/28,28,28  
 Prof: 2137 to 182110, NumProf(r/t): 35142/179973  
 ProcTime/Recs: 21:54:17-22:10:48/140568-175709  
 ADacqtime: 25ms; DRate: 198.4KB/s; Flags: 0, 0, 0  
 Pulse: 275ns, IFfilt: 5.0MHz; ppPol: HH HV VV  
 TxPol: HHVV, PRF: 20 10 20 10 kHz, Noiseflg:1,3  
 Range: Delay 75m, Spacing 30m, Gates 100  
 Ave. Pulses: 84, Rng/Prof Aspect@90m/s: 11.8

	Min	Max	Mean	Std	Varc%
hhN(dB)	-67.66	-64.24	-65.72	-75.73	10.0
vvN(dB)	-67.99	-64.04	-65.97	-75.81	10.4
hhL(dB)	-23.28	3.20	-1.44	-2.58	76.9
vvL(dB)	-15.20	6.00	4.20	1.65	55.5
ppN(m/s)	-12.73	12.55	-0.05	4.16	
ppT(m/s)	-100.5	99.13	-0.40	32.86	
hh/vv(dB)	NaN	81.62	NaN	55.74	-422
vh/hh(dB)	NaN	-1.04	-36.21	-24.23	1576
hv/vv(dB)	NaN	-27.78	-48.67	-43.53	326.
hnjmp(dB)			0.14		
vnjmp(dB)			0.15		



CIFEX 2004 Data (cal/250ns+2.5/100ns-3.5/500ns: 53.0,50.0)

W2004-04-15-20-48-10 - PPMAG4, IRIG:1/0/2  
 UTC: 20:48:10.64 to 22:12:49.10, Dur: 5079s  
 TimeLngth: 5078.46s, TimeInt: 28ms (35.4pps)  
 TimeCor=-13.0s, PPS(min,max,med): 35,36,35  
 Timeint/DSPdiff(mn,min,mx):28,28,30/28,28,28  
 Prof: 2137 to 182110, NumProf(r/t): 35142/179973  
 ProcTime/Recs: 21:54:17-22:10:48/140568-175709  
 ADacqtime: 25ms; DRate: 198.4KB/s; Flags: 0, 0, 0  
 Pulse: 275ns, IFilt: 5.0MHz; ppPol: HH HV VV  
 TxPol: HHVV, PRF: 20 10 20 10 kHz, NoiseFlg:1,3  
 Range: Delay 75m, Spacing 30m, Gates 100  
 Ave. Pulses: 84, Rng/Prof Aspect@90m/s: 11.8

	Min	Max	Mean	Std	Varc%
hhN (dB)	-67.66	-64.24	-65.72	-75.73	10.0
vvN (dB)	-67.99	-64.04	-65.97	-75.81	10.4
hhL (dB)	-23.28	3.20	-1.44	-2.58	76.9
vvL (dB)	-15.20	6.00	4.20	1.65	55.5
ppN (m/s)	-12.73	12.55	-0.05	4.16	
ppT (m/s)	-100.5	99.13	-0.40	32.86	
hh/vv (dB)	NaN	81.62	NaN	55.74	-422
vh/hh (dB)	NaN	-1.04	-36.21	-24.23	1576
hv/vv (dB)	NaN	-27.78	-48.67	-43.53	326.
hn_jmp (dB)				0.14	
vn_jmp (dB)				0.15	