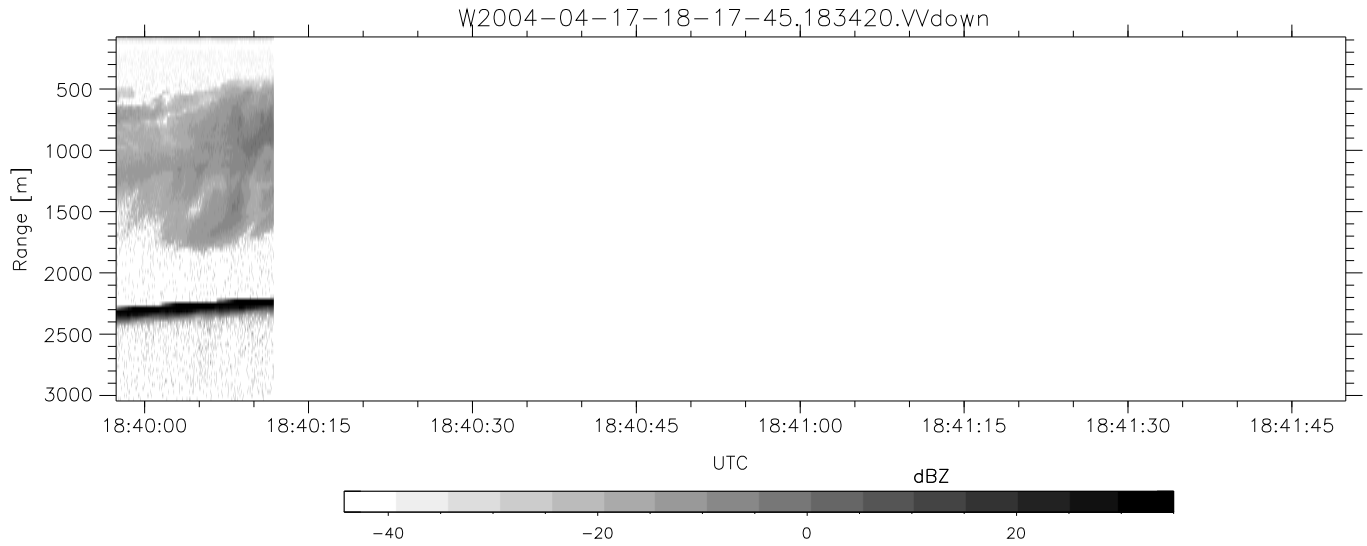


CIFEX 2004 Data (cal/250ns+2.5/100ns-3.5/500ns: 53.0,50.0)

W2004-04-17-18-17-45 - SPPMAG, IRIG:1/0/6
 UTC: 18:17:45.21 to 18:40:11.81, Dur: 1346s
 TimeLngth: 1346.53s, TimeInt: 35ms (28.2pps)
 TimeCor=-13.0s, PPS(min,max,med): 28,29,28
 Timeint/DSPdiff(mn,min,mx):35,35,35/35,35,35
 Prof: 219 to 38247, NumProf(r/t): 9914/38028
 ProcTime/Recs: 18:34:20-18:40:11/28114-38027
 ADacqtime: 32ms; DRate: 45.6KB/s; Flags: 0, 0, 0
 Pulse: 275ns, IFfilt: 5.0MHz; ppPol: VV
 TxPol: V, PRF: 20 20 20 10 kHz, NoiseFlg:1234
 Range: Delay 75m, Spacing 30m, Gates 100
 Ave. Pulses: 520, Rng/Prof Aspect@90m/s: 9.4

	Min	Max	Mean	Std	Varc%
hhN(dB)	-66.37	-64.94	-65.64	-79.30	4.3
vvN(dB)	-66.36	-64.47	-65.53	-77.42	6.5
vvL(dB)	4.16	6.00	5.99	-11.90	1.6
hvL(dB)	-2.40	-0.96	-1.65	-13.91	5.9
ppN(m/s)	-15.80	15.80	-0.60	9.39	
ppT(m/s)	-0.05	0.01	-0.02	0.01	
hv/vv(dB)	NaN	-35.67	-52.68	-46.49	415.
hn_jmp(dB)				0.15	
vn_jmp(dB)				0.15	



CIFEX 2004 Data (cal/250ns+2.5/100ns-3.5/500ns: 53.0,50.0)

W2004-04-17-18-17-45 - SPPMAG, IRIG:1/0/6
 UTC: 18:17:45.21 to 18:40:11.81, Dur: 1346s
 TimeLngth: 1346.53s, TimeInt: 35ms (28.2pps)
 TimeCor=-13.0s, PPS(min,max,med): 28,29,28
 Timeint/DSPdiff(mn,min,mx):35,35,35/35,35,35
 Prof: 219 to 38247, NumProf(r/t): 9914/38028
 ProcTime/Recs: 18:34:20-18:40:11/28114-38027
 ADacqtime: 32ms; DRate: 45.6KB/s; Flags: 0, 0, 0
 Pulse: 275ns, IFilt: 5.0MHz; ppPol: VV
 TxPol: V, PRF: 20 20 20 10 kHz, NoiseFlg:1234
 Range: Delay 75m, Spacing 30m, Gates 100
 Ave. Pulses: 520, Rng/Prof Aspect@90m/s: 9.4

	Min	Max	Mean	Std	Varc%
hhN(dB)	-66.37	-64.94	-65.64	-79.30	4.3
vvN(dB)	-66.36	-64.47	-65.53	-77.42	6.5
vvL(dB)	4.16	6.00	5.99	-11.90	1.6
hvL(dB)	-2.40	-0.96	-1.65	-13.91	5.9
ppN(m/s)	-15.80	15.80	-0.60	9.39	
ppT(m/s)	-0.05	0.01	-0.02	0.01	
hv/vv(dB)	NaN	-35.67	-52.68	-46.49	415.
hn_jmp(dB)			0.15		
vn_jmp(dB)			0.15		