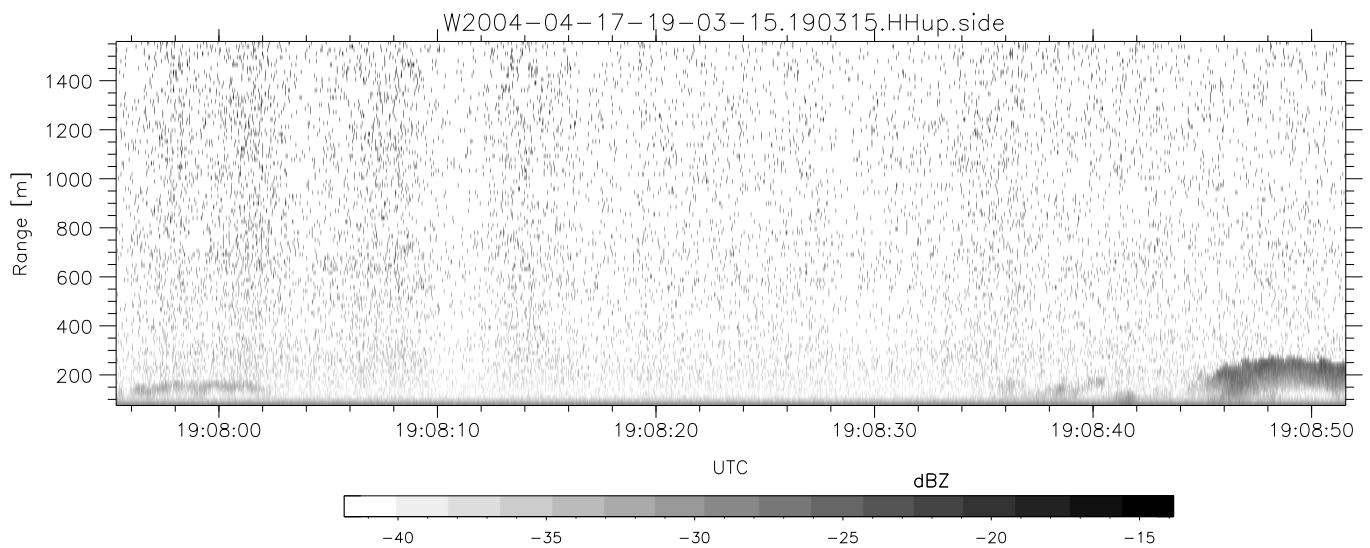
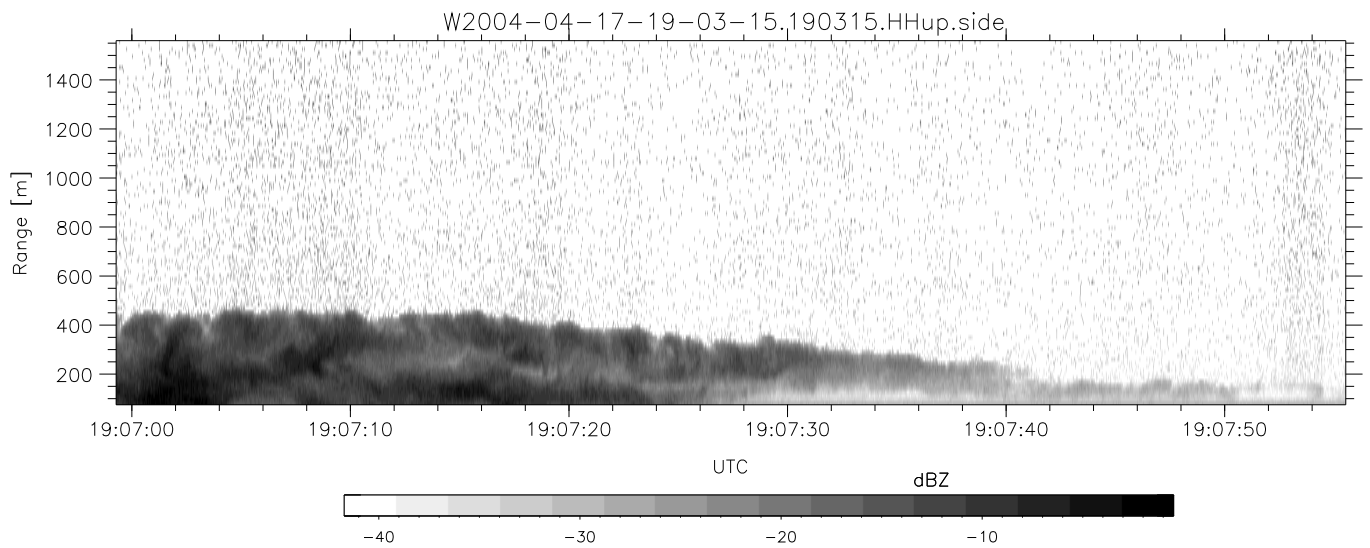
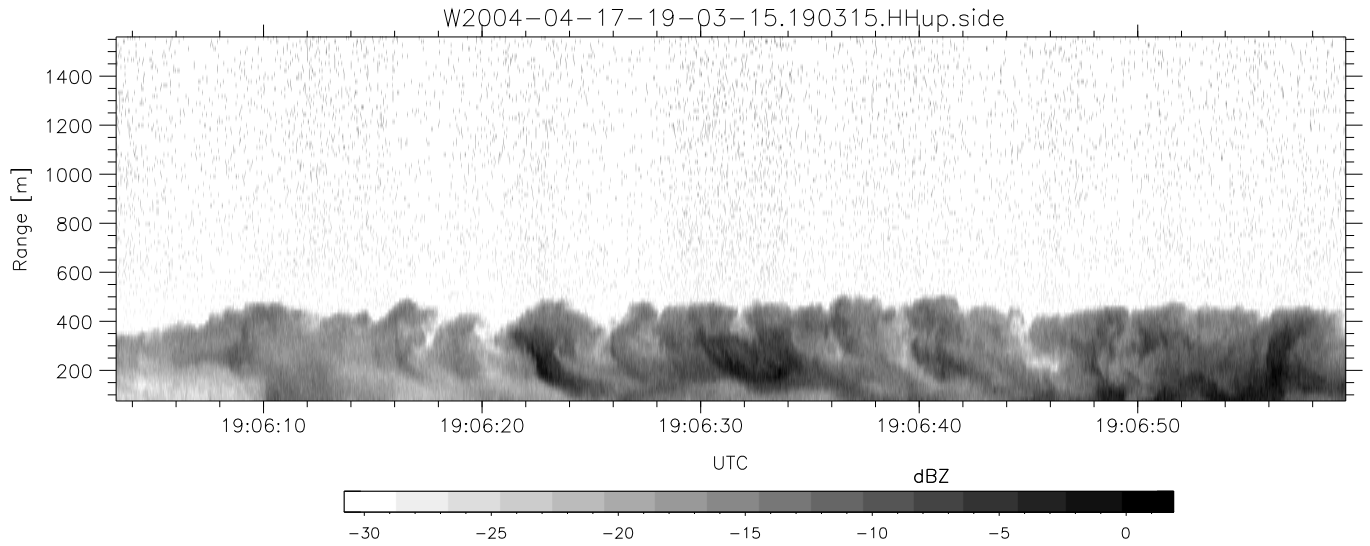


CIFEX 2004 Data (cal/250ns+2.5/100ns-3.5/500ns: 53.0,50.0)

W2004-04-17-19-03-15 - PPMAG4, IRIG:1/0/6
 UTC: 19:03:15.22 to 19:23:35.76, Dur: 1220s ???
 TimeLngth: 1222.40s, TimeInt: 26ms (37.5pps)
 TimeCor=-13.0s, PPS(min,max,med): 37,38,38
 Timeint/DSPdiff(mn,min,mx):26,26,37/27,26,37
 Prof: 357 to 46239, NumProf(r/t): 18575/45882
 ProcTime/Recs: 19:03:15-19:11:29/0-18574
 ADacqtime: 25ms; DRate: 210.4KB/s; Flags: 0, 0, 0
 Pulse: 275ns, IFfilt: 5.0MHz; ppPol: HH HV VV
 TxPol: HHVV, PRF: 20 10 20 10 kHz, Noiseflg:4,2
 Range: Delay 75m, Spacing 15m, Gates 100
 Ave. Pulses: 84, Rng/Prof Aspect@90m/s: 6.3

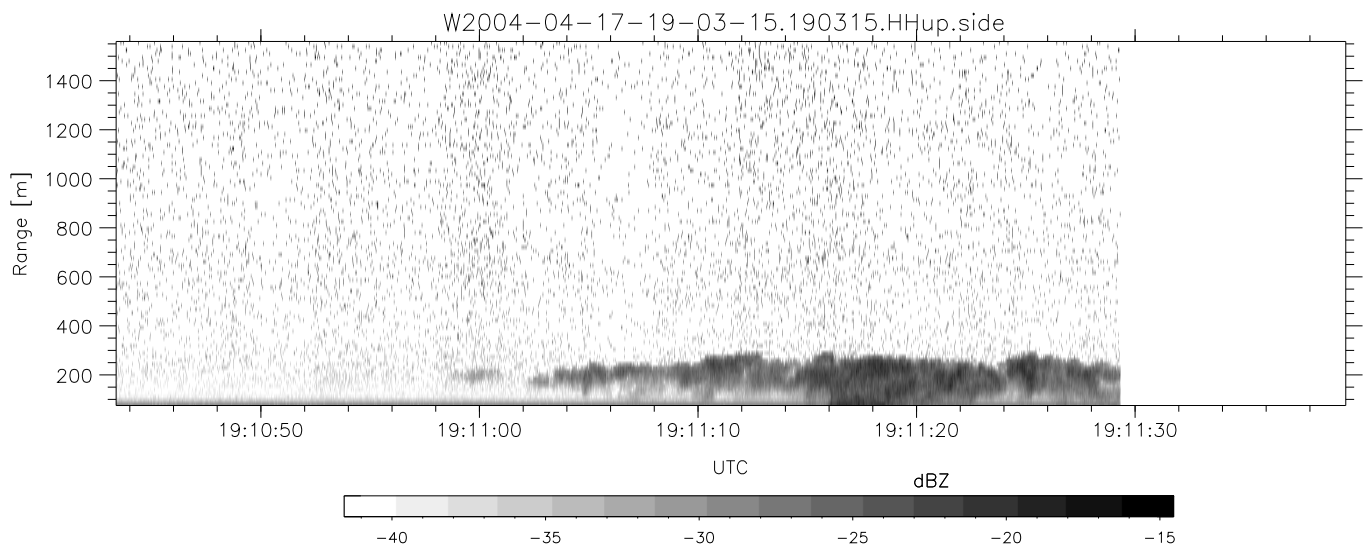
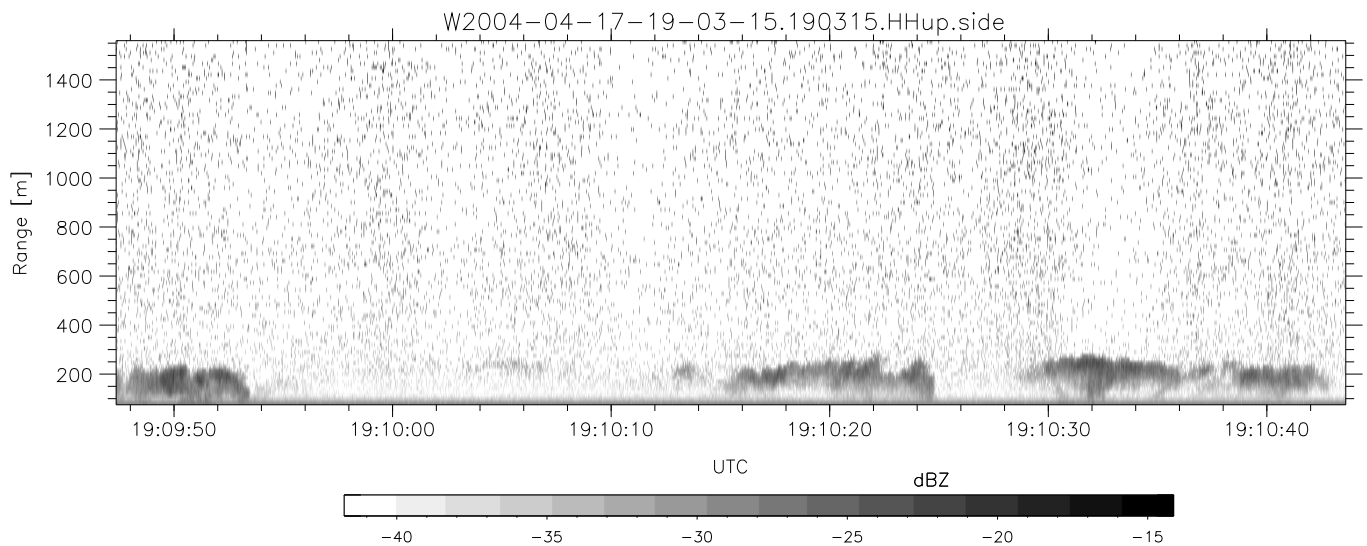
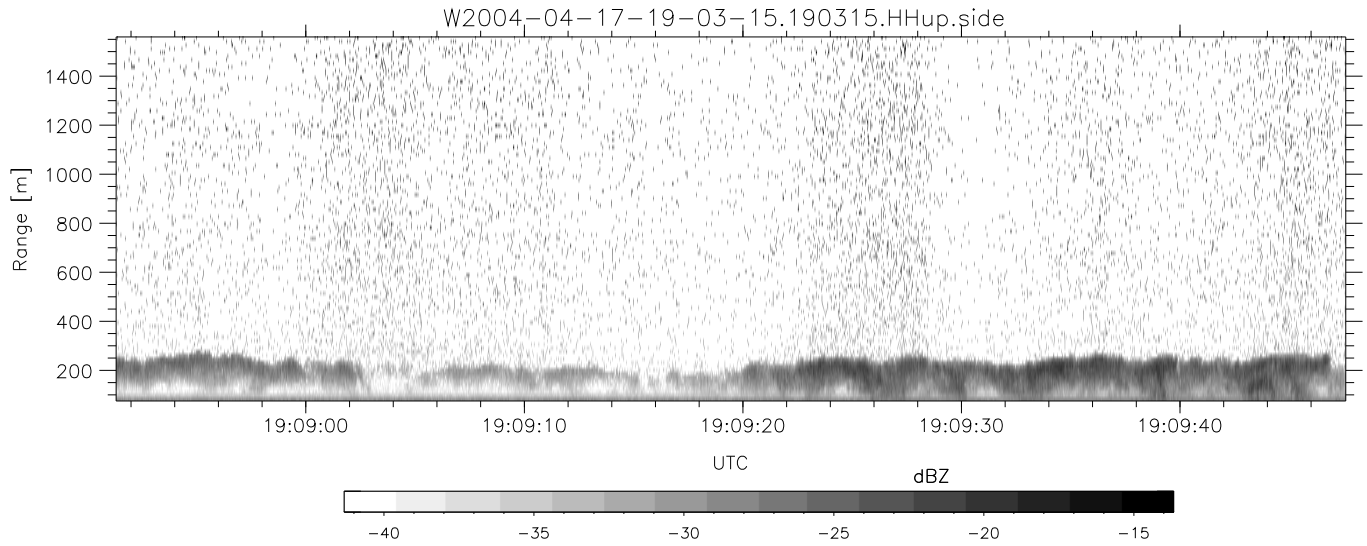
	Min	Max	Mean	Std	Varc%
hhN(dB)	-67.77	-64.21	-65.88	-75.93	9.9
vvN(dB)	-67.56	-64.30	-65.94	-75.90	10.1
hhL(dB)	-7.01	1.74	-3.05	-5.23	60.5
vvL(dB)	2.90	6.00	5.04	-1.19	23.8
ppN(m/s)	-12.68	12.60	0.03	4.13	
ppT(m/s)	-100.2	99.53	0.24	32.60	
hh/vv(dB)	NaN	63.87	19.00	41.49	1777
vh/hh(dB)	NaN	-27.42	-34.01	-35.63	68.9
hv/vv(dB)	NaN	-34.42	-61.01	-46.82	2621
hnjmp(dB)				0.15	
vnjmp(dB)				0.17	



CIFEX 2004 Data (cal/250ns+2.5/100ns-3.5/500ns: 53.0,50.0)

W2004-04-17-19-03-15 - PPMAG4, IRIG:1/0/6
 UTC: 19:03:15.22 to 19:23:35.76, Dur: 1220s ???
 TimeLngth: 1222.40s, TimeInt: 26ms (37.5pps)
 TimeCor=-13.0s, PPS(min,max,med): 37,38,38
 Timeint/DSPdiff(mn,min,mx):26,26,37/27,26,37
 Prof: 357 to 46239, NumProf(r/t): 18575/45882
 ProcTime/Recs: 19:03:15-19:11:29/0-18574
 ADacqtime: 25ms; DRate: 210.4KB/s; Flags: 0, 0, 0
 Pulse: 275ns, IFilt: 5.0MHz; ppPol: HH HV VV
 TxPol: HHVV, PRF: 20 10 20 10 kHz, NoiseFlg:4,2
 Range: Delay 75m, Spacing 15m, Gates 100
 Ave. Pulses: 84, Rng/Prof Aspect@90m/s: 6.3

	Min	Max	Mean	Std	Varc%
hhN(dB)	-67.77	-64.21	-65.88	-75.93	9.9
vvN(dB)	-67.56	-64.30	-65.94	-75.90	10.1
hhL(dB)	-7.01	1.74	-3.05	-5.23	60.5
vvL(dB)	2.90	6.00	5.04	-1.19	23.8
ppN(m/s)	-12.68	12.60	0.03	4.13	
ppT(m/s)	-100.2	99.53	0.24	32.60	
hh/vv(dB)	NaN	63.87	19.00	41.49	1777
vh/hh(dB)	NaN	-27.42	-34.01	-35.63	68.9
hv/vv(dB)	NaN	-34.42	-61.01	-46.82	2621
hnjmp(dB)				0.15	
vnjmp(dB)				0.17	



CIFEX 2004 Data (cal/250ns+2.5/100ns-3.5/500ns: 53.0,50.0)

W2004-04-17-19-03-15 - PPMAG4, IRIG:1/0/6
 UTC: 19:03:15.22 to 19:23:35.76, Dur: 1220s ???
 TimeLngth: 1222.40s, TimeInt: 26ms (37.5pps)
 TimeCor=-13.0s, PPS(min,max,med): 37,38,38
 Timeint/DSPdiff(mn,min,mx):26,26,37/27,26,37
 Prof: 357 to 46239, NumProf(r/t): 18575/45882
 ProcTime/Recs: 19:03:15-19:11:29/0-18574
 ADacqtime: 25ms; DRate: 210.4KB/s; Flags: 0, 0, 0
 Pulse: 275ns, IFilt: 5.0MHz; ppPol: HH HV VV
 TxPol: HHVV, PRF: 20 10 20 10 kHz, NoiseFlg:4,2
 Range: Delay 75m, Spacing 15m, Gates 100
 Ave. Pulses: 84, Rng/Prof Aspect@90m/s: 6.3

	Min	Max	Mean	Std	Varc%
hhN(dB)	-67.77	-64.21	-65.88	-75.93	9.9
vvN(dB)	-67.56	-64.30	-65.94	-75.90	10.1
hhL(dB)	-7.01	1.74	-3.05	-5.23	60.5
vvL(dB)	2.90	6.00	5.04	-1.19	23.8
ppN(m/s)	-12.68	12.60	0.03	4.13	
ppT(m/s)	-100.2	99.53	0.24	32.60	
hh/vv(dB)	NaN	63.87	19.00	41.49	1777
vh/hh(dB)	NaN	-27.42	-34.01	-35.63	68.9
hv/vv(dB)	NaN	-34.42	-61.01	-46.82	2621
hnjmp(dB)				0.15	
vnjmp(dB)				0.17	