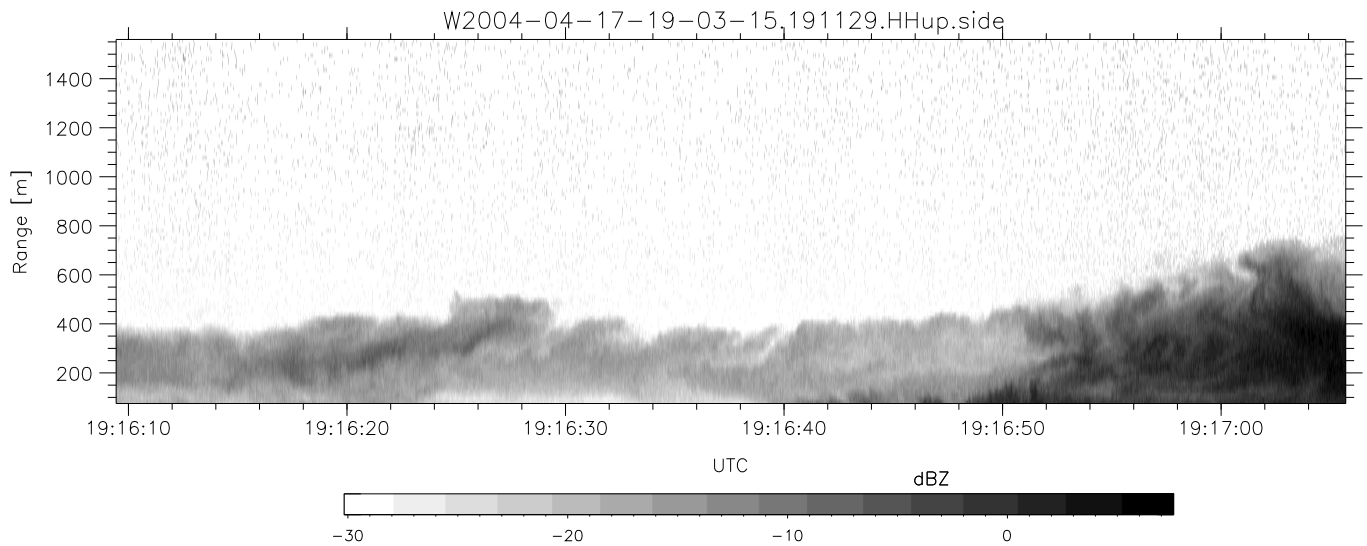
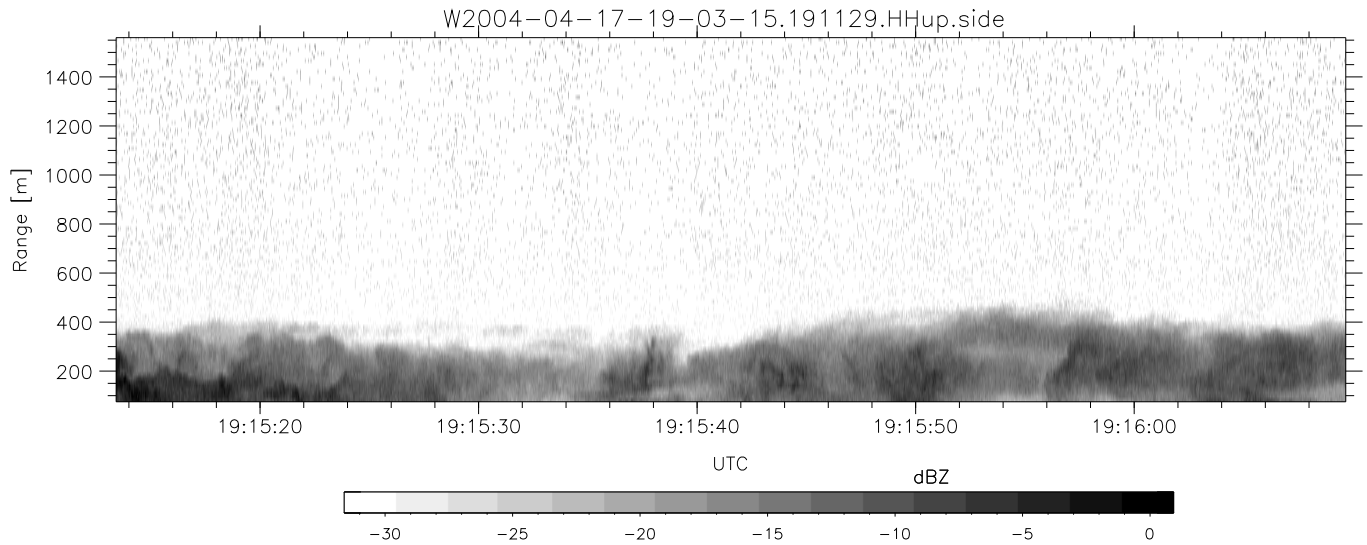
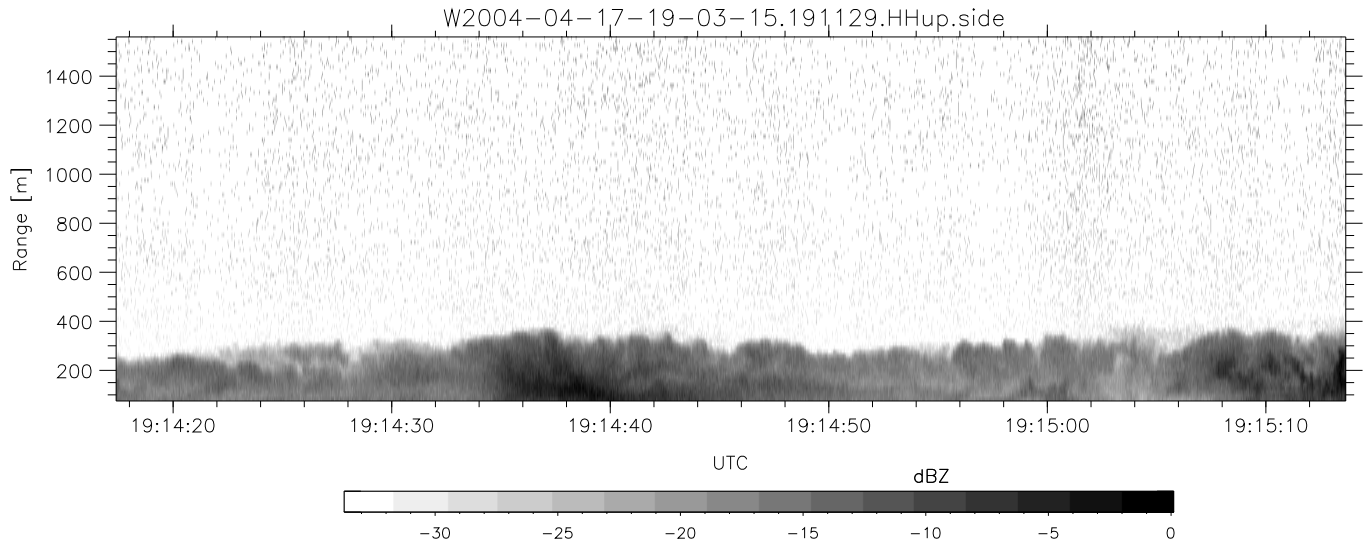


CIFEX 2004 Data (cal/250ns+2.5/100ns-3.5/500ns: 53.0,50.0)

W2004-04-17-19-03-15 - PPMAG4, IRIG:1/0/6
 UTC: 19:03:15.22 to 19:23:35.76, Dur: 1220s ???
 TimeLngth: 1221.68s, TimeInt: 26ms (37.6pps)
 TimeCor=-13.0s, PPS(min,max,med): 37,38,38
 Timeint/DSPdiff(mn,min,mx):26,26,28/26,26,28
 Prof: 357 to 46239, NumProf(r/t): 18575/45882
 ProcTime/Recs: 19:11:29-19:19:43/18575-37149
 ADacqtime: 25ms; DRate: 210.4KB/s; Flags: 0, 0, 0
 Pulse: 275ns, IFilt: 5.0MHz; ppPol: HH HV VV
 TxPol: HHVV, PRF: 20 10 20 10 kHz, NoiseFlg:4,1
 Range: Delay 75m, Spacing 15m, Gates 100
 Ave. Pulses: 84, Rng/Prof Aspect@90m/s: 6.3

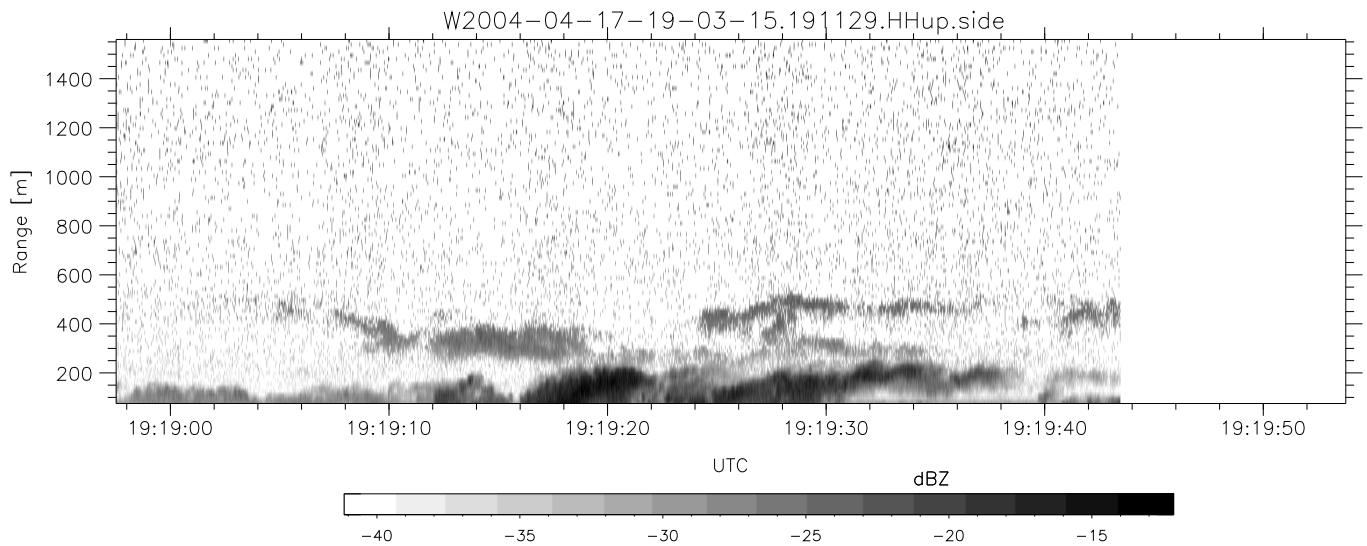
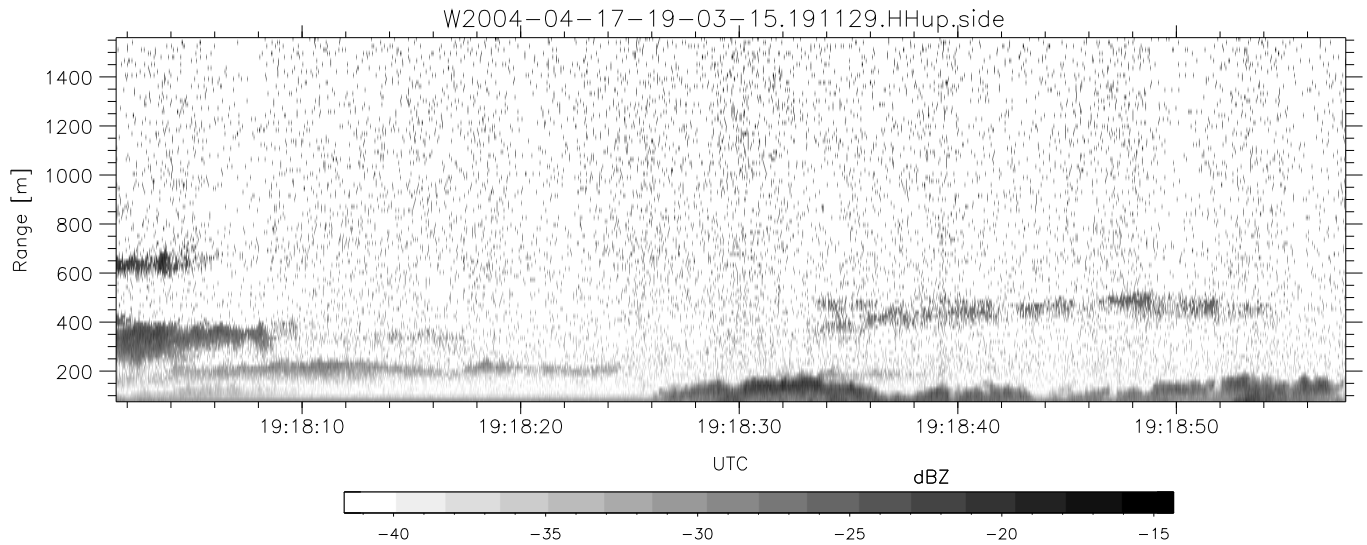
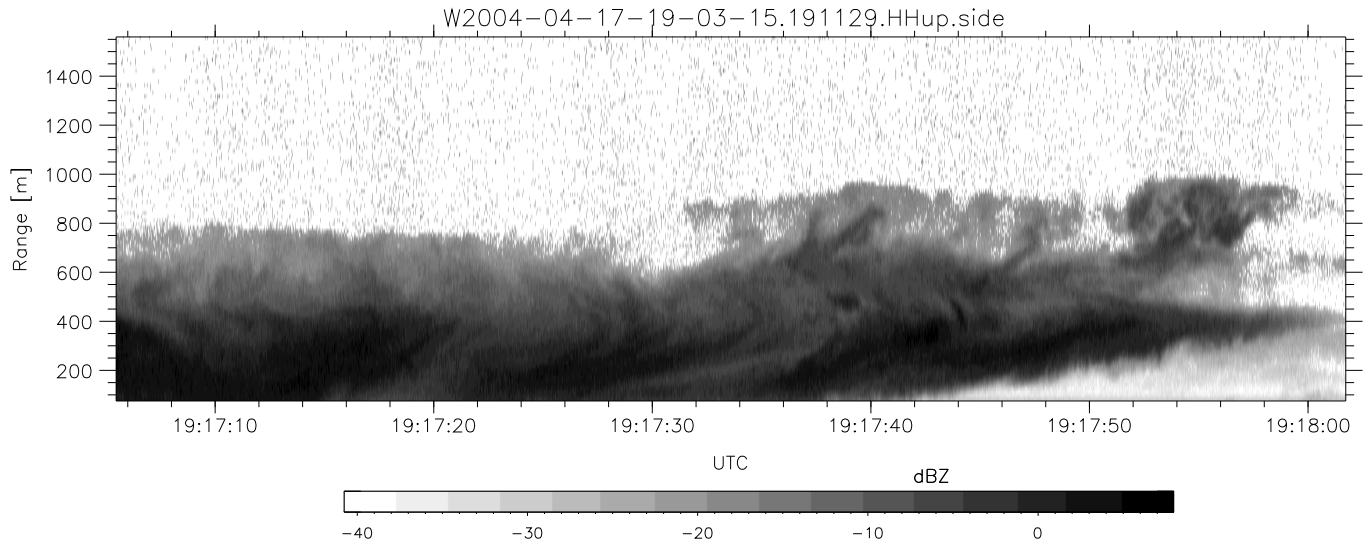
	Min	Max	Mean	Std	Varc%
hhN (dB)	-67.71	-64.45	-65.93	-75.97	9.9
vvN (dB)	-67.71	-64.45	-65.98	-75.95	10.1
hhL (dB)	-8.73	-3.66	-5.87	-11.87	25.1
vvL (dB)	3.83	6.00	5.09	-1.24	23.3
ppN (m/s)	-12.34	12.74	0.03	4.14	
ppT (m/s)	-97.50	100.65	0.21	32.74	
hh/vv (dB)	NaN	75.28	22.60	51.94	8591
vh/hh (dB)	NaN	-26.93	-37.00	-36.57	110.
hv/vv (dB)	NaN	2.82	-22.49	-13.74	750.
hnjmp (dB)				-0.18	
vnjmp (dB)				-0.16	



CIFEX 2004 Data (cal/250ns+2.5/100ns-3.5/500ns: 53.0,50.0)

W2004-04-17-19-03-15 - PPMAG4, IRIG:1/0/6
 UTC: 19:03:15.22 to 19:23:35.76, Dur: 1220s ???
 TimeLngth: 1221.68s, TimeInt: 26ms (37.6pps)
 TimeCor=-13.0s, PPS(min,max,med): 37,38,38
 Timeint/DSPdiff(mn,min,mx):26,26,28/26,26,28
 Prof: 357 to 46239, NumProf(r/t): 18575/45882
 ProcTime/Recs: 19:11:29-19:19:43/18575-37149
 ADacqtime: 25ms; DRate: 210.4KB/s; Flags: 0, 0, 0
 Pulse: 275ns, IFfilt: 5.0MHz; ppPol: HH HV VV
 TxPol: HHVV, PRF: 20 10 20 10 kHz, Noiseflg:4,1
 Range: Delay 75m, Spacing 15m, Gates 100
 Ave. Pulses: 84, Rng/Prof Aspect@90m/s: 6.3

	Min	Max	Mean	Std	Varc%
hhN(dB)	-67.71	-64.45	-65.93	-75.97	9.9
vvN(dB)	-67.71	-64.45	-65.98	-75.95	10.1
hhL(dB)	-8.73	-3.66	-5.87	-11.87	25.1
vvL(dB)	3.83	6.00	5.09	-1.24	23.3
ppN(m/s)	-12.34	12.74	0.03	4.14	
ppT(m/s)	-97.50	100.65	0.21	32.74	
hh/vv(dB)	NaN	75.28	22.60	51.94	8591
vh/hh(dB)	NaN	-26.93	-37.00	-36.57	110.
hv/vv(dB)	NaN	2.82	-22.49	-13.74	750.
hnjmp(dB)				-0.18	
vnjmp(dB)				-0.16	



CIFEX 2004 Data (cal/250ns+2.5/100ns-3.5/500ns: 53.0,50.0)

W2004-04-17-19-03-15 - PPMAG4, IRIG:1/0/6
 UTC: 19:03:15.22 to 19:23:35.76, Dur: 1220s ???
 TimeLngth: 1221.68s, TimeInt: 26ms (37.6pps)
 TimeCor=-13.0s, PPS(min,max,med): 37,38,38
 Timeint/DSPdiff(mn,min,mx):26,26,28/26,26,28
 Prof: 357 to 46239, NumProf(r/t): 18575/45882
 ProcTime/Recs: 19:11:29-19:19:43/18575-37149
 ADacqtime: 25ms; DRate: 210.4KB/s; Flags: 0, 0, 0
 Pulse: 275ns, IFfilt: 5.0MHz; ppPol: HH HV VV
 TxPol: HHVV, PRF: 20 10 20 10 kHz, NoiseFlg:4,1
 Range: Delay 75m, Spacing 15m, Gates 100
 Ave. Pulses: 84, Rng/Prof Aspect@90m/s: 6.3

	Min	Max	Mean	Std	Varc%
hhN (dB)	-67.71	-64.45	-65.93	-75.97	9.9
vvN (dB)	-67.71	-64.45	-65.98	-75.95	10.1
hhL (dB)	-8.73	-3.66	-5.87	-11.87	25.1
vvL (dB)	3.83	6.00	5.09	-1.24	23.3
ppN (m/s)	-12.34	12.74	0.03	4.14	
ppT (m/s)	-97.50	100.65	0.21	32.74	
hh/vv (dB)	NaN	75.28	22.60	51.94	8591
vh/hh (dB)	NaN	-26.93	-37.00	-36.57	110.
hv/vv (dB)	NaN	2.82	-22.49	-13.74	750.
hn_jmp (dB)				-0.18	
vn_jmp (dB)				-0.16	