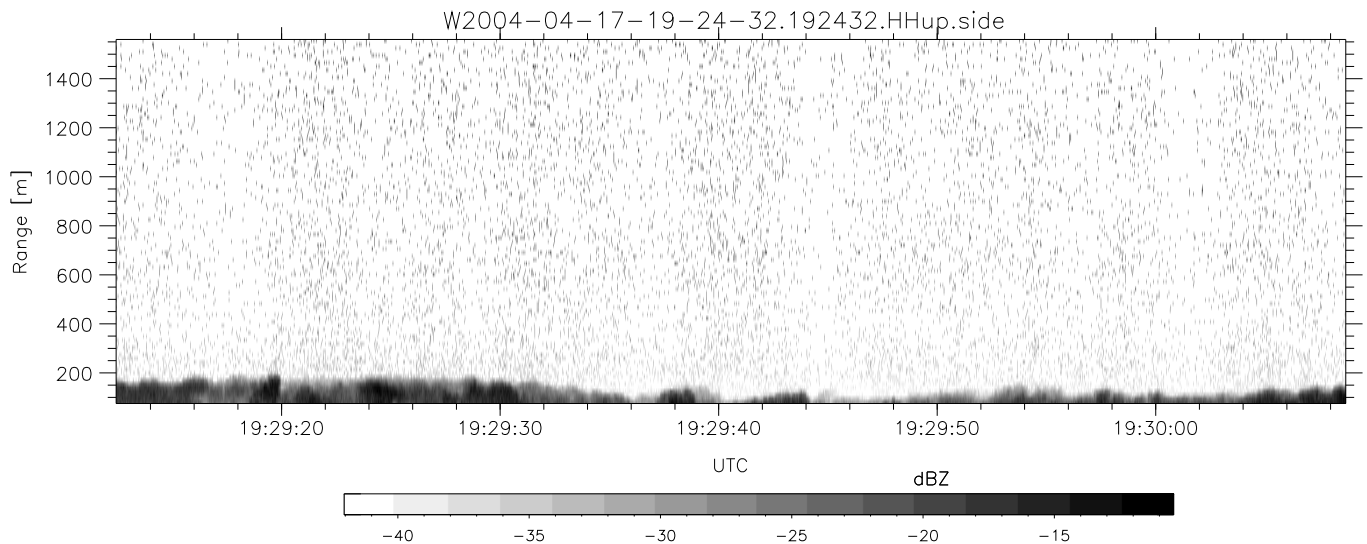
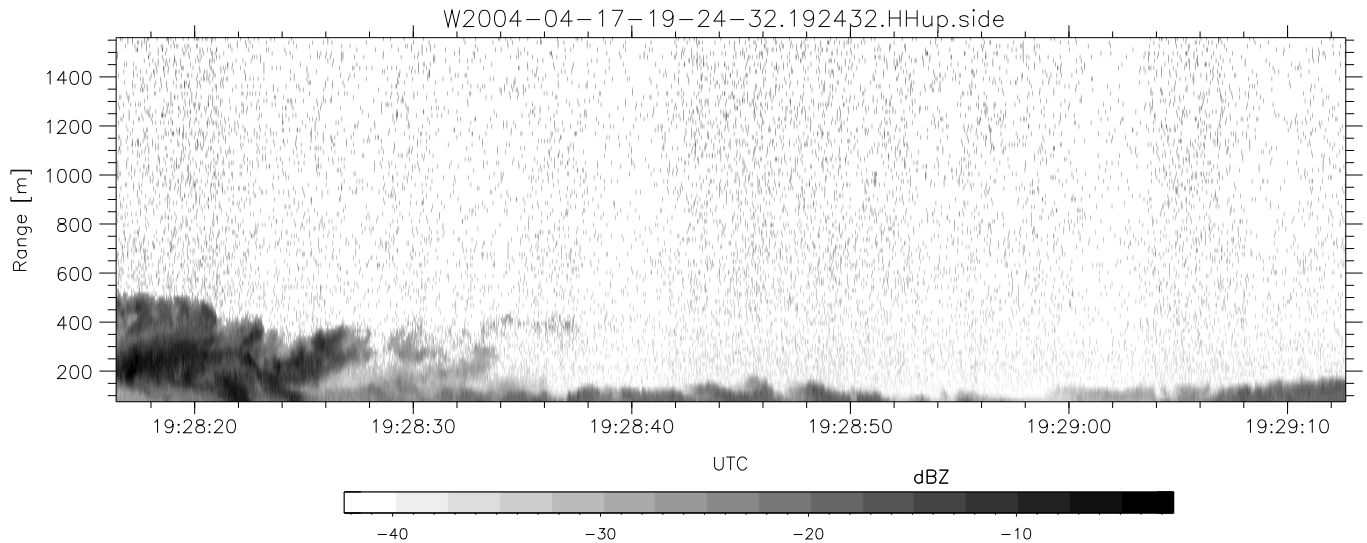
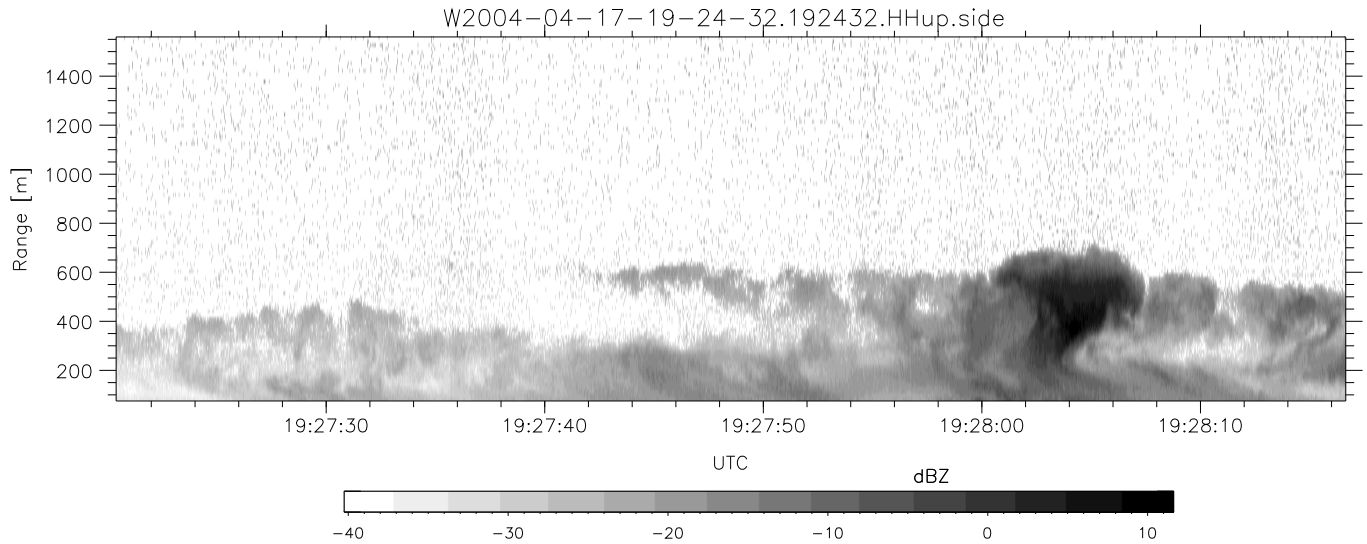


CIFEX 2004 Data (cal/250ns+2.5/100ns-3.5/500ns: 53.0,50.0)

W2004-04-17-19-24-32 - PPMAG4, IRIG:1/0/6
 UTC: 19:24:32.35 to 19:39:36.92, Dur: 904s
 TimeLngth: 904.64s, TimeInt: 26ms (37.6pps)
 TimeCor=-13.0s, PPS(min,max,med): 37,38,38
 Timeint/DSPdiff(mn,min,mx):26,26,38/27,26,27
 Prof: 385 to 34390, NumProf(r/t): 18575/34005
 ProcTime/Recs: 19:24:32-19:32:46/0-18574
 ADacqtime: 25ms; DRate: 210.4KB/s; Flags: 0, 0, 0
 Pulse: 275ns, IFilt: 5.0MHz; ppPol: HH HV VV
 TxPol: HHV, PRF: 20 10 20 10 kHz, NoiseFlg:4,2
 Range: Delay 75m, Spacing 15m, Gates 100
 Ave. Pulses: 84, Rng/Prof Aspect@90m/s: 6.3

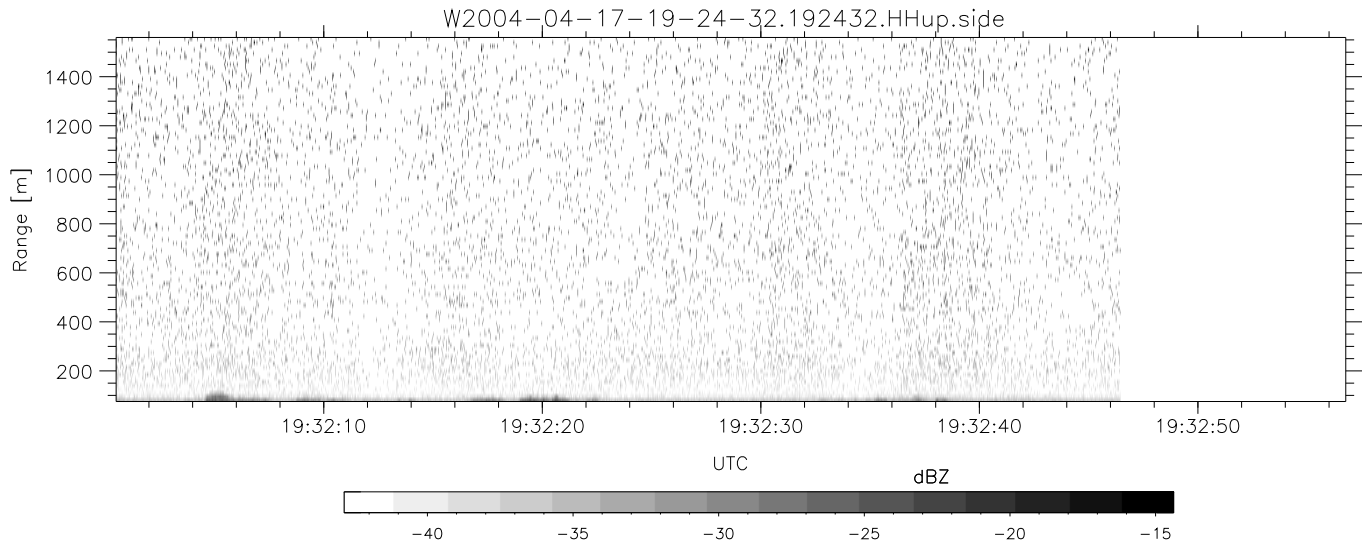
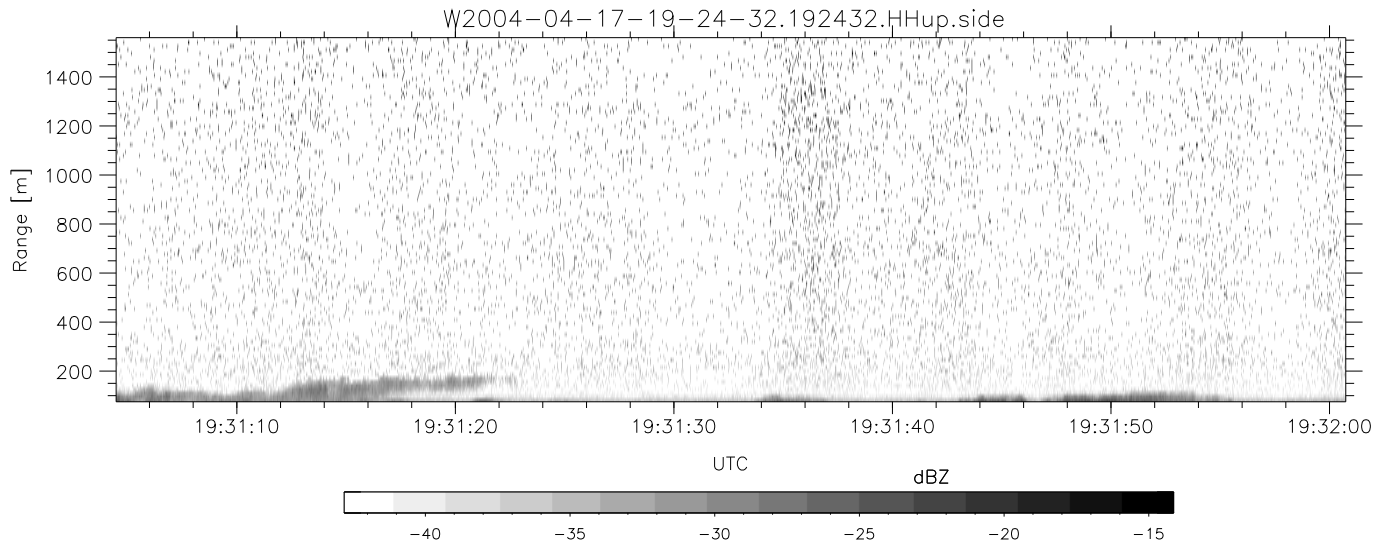
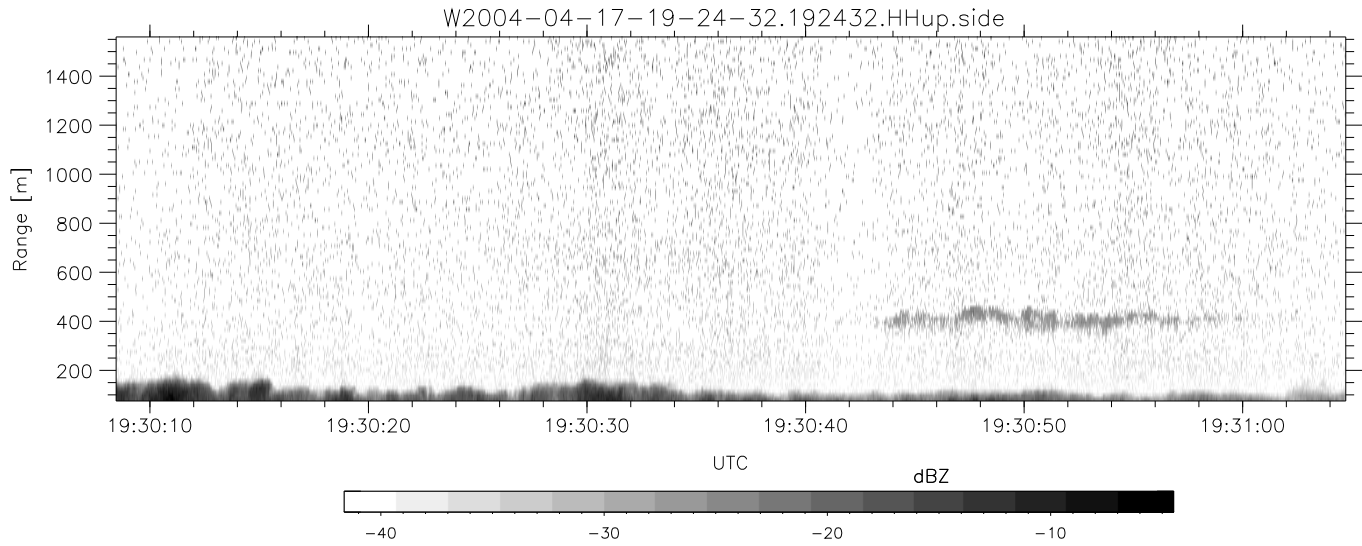
	Min	Max	Mean	Std	Varc%
hhN (dB)	-67.72	-64.10	-66.05	-76.08	9.9
vvN (dB)	-67.87	-64.54	-66.06	-76.05	10.0
hhL (dB)	-15.59	-7.40	-10.32	-15.64	29.4
vvL (dB)	-1.42	6.00	5.02	-1.47	22.5
ppN (m/s)	-12.32	13.07	-0.01	4.15	
ppT (m/s)	-97.31	103.23	-0.12	32.80	
hh/vv (dB)	NaN	48.11	4.92	31.70	4770
vh/hh (dB)	NaN	-27.95	-37.71	-36.27	139.
hv/vv (dB)	NaN	-7.36	-40.14	-26.83	2141
hn_jmp (dB)			0.17		
vn_jmp (dB)			0.16		



CIFEX 2004 Data (cal/250ns+2.5/100ns-3.5/500ns: 53.0,50.0)

W2004-04-17-19-24-32 - PPMAG4, IRIG:1/0/6
 UTC: 19:24:32.35 to 19:39:36.92, Dur: 904s
 TimeLngth: 904.64s, TimeInt: 26ms (37.6pps)
 TimeCor=-13.0s, PPS(min,max,med): 37,38,38
 Timeint/DSPdiff(mn,min,mx):26,26,38/27,26,27
 Prof: 385 to 34390, NumProf(r/t): 18575/34005
 ProcTime/Recs: 19:24:32-19:32:46/0-18574
 ADacqtime: 25ms; DRate: 210.4KB/s; Flags: 0, 0, 0
 Pulse: 275ns, IFilt: 5.0MHz; ppPol: HH HV VV
 TxPol: HHVV, PRF: 20 10 20 10 kHz, NoiseFlg:4,2
 Range: Delay 75m, Spacing 15m, Gates 100
 Ave. Pulses: 84, Rng/Prof Aspect@90m/s: 6.3

	Min	Max	Mean	Std	Varc%
hhN (dB)	-67.72	-64.10	-66.05	-76.08	9.9
vvN (dB)	-67.87	-64.54	-66.06	-76.05	10.0
hhL (dB)	-15.59	-7.40	-10.32	-15.64	29.4
vvL (dB)	-1.42	6.00	5.02	-1.47	22.5
ppN (m/s)	-12.32	13.07	-0.01	4.15	
ppT (m/s)	-97.31	103.23	-0.12	32.80	
hh/vv (dB)	NaN	48.11	4.92	31.70	4770
vh/hh (dB)	NaN	-27.95	-37.71	-36.27	139.
hv/vv (dB)	NaN	-7.36	-40.14	-26.83	2141
hnjmp (dB)			0.17		
vnjmp (dB)			0.16		



CIFEX 2004 Data (cal/250ns+2.5/100ns-3.5/500ns: 53.0,50.0)

W2004-04-17-19-24-32 - PPMAG4, IRIG:1/0/6
 UTC: 19:24:32.35 to 19:39:36.92, Dur: 904s
 TimeLngth: 904.64s, TimeInt: 26ms (37.6pps)
 TimeCor=-13.0s, PPS(min,max,med): 37,38,38
 Timeint/DSPdiff(mn,min,mx):26,26,38/27,26,27
 Prof: 385 to 34390, NumProf(r/t): 18575/34005
 ProcTime/Recs: 19:24:32-19:32:46/0-18574
 ADacqtime: 25ms; DRate: 210.4KB/s; Flags: 0, 0, 0
 Pulse: 275ns, IFfilt: 5.0MHz; ppPol: HH HV VV
 TxPol: HHVV, PRF: 20 10 20 10 kHz, Noiseflg:4,2
 Range: Delay 75m, Spacing 15m, Gates 100
 Ave. Pulses: 84, Rng/Prof Aspect@90m/s: 6.3

	Min	Max	Mean	Std	Varc%
hhN(dB)	-67.72	-64.10	-66.05	-76.08	9.9
vvN(dB)	-67.87	-64.54	-66.06	-76.05	10.0
hhL(dB)	-15.59	-7.40	-10.32	-15.64	29.4
vvL(dB)	-1.42	6.00	5.02	-1.47	22.5
ppN(m/s)	-12.32	13.07	-0.01	4.15	
ppT(m/s)	-97.31	103.23	-0.12	32.80	
hh/vv(dB)	NaN	48.11	4.92	31.70	4770
vh/hh(dB)	NaN	-27.95	-37.71	-36.27	139.
hv/vv(dB)	NaN	-7.36	-40.14	-26.83	2141
hnjmp(dB)			0.17		
vnjmp(dB)			0.16		