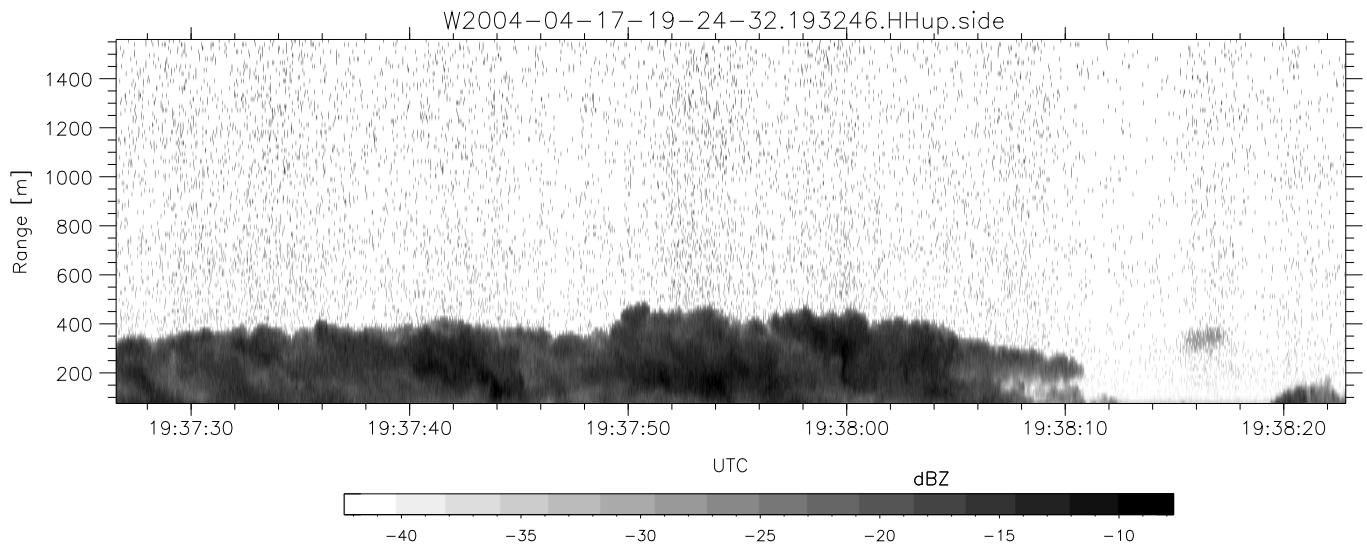
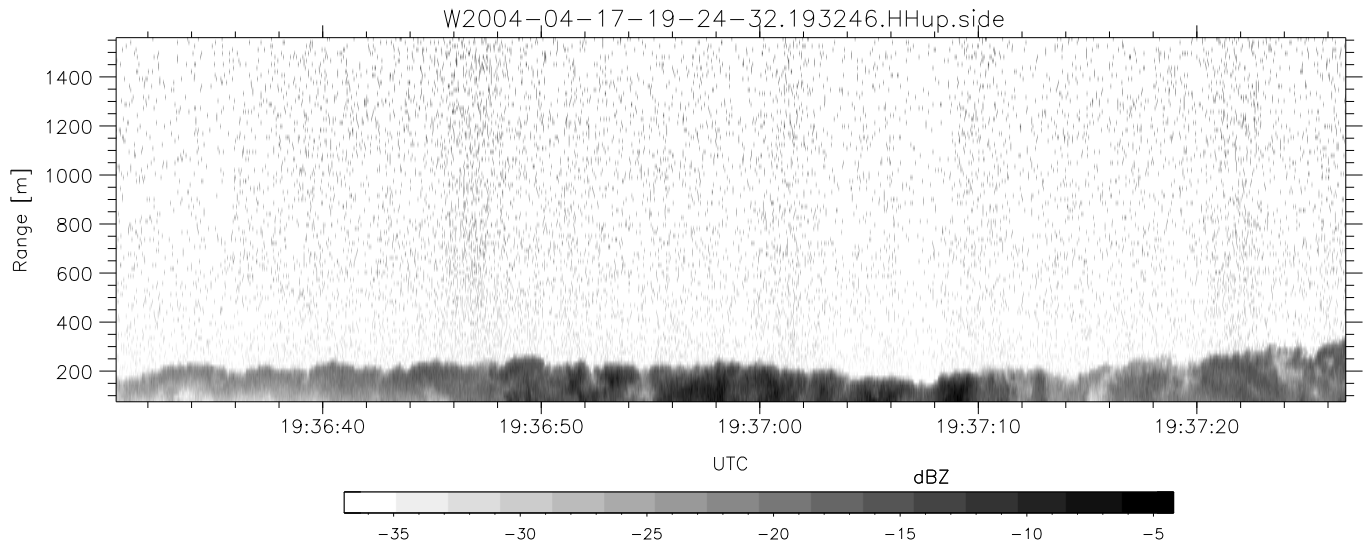
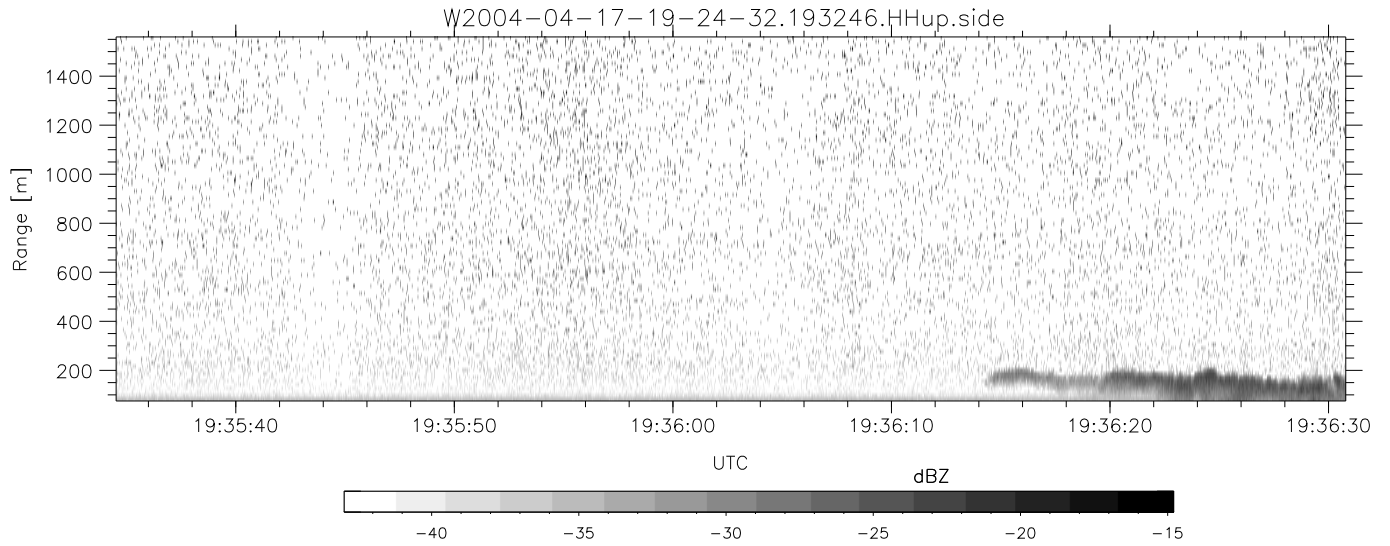


CIFEX 2004 Data (cal/250ns+2.5/100ns-3.5/500ns: 53.0,50.0)

W2004-04-17-19-24-32 - PPMAG4, IRIG:1/0/6
 UTC: 19:24:32.35 to 19:39:36.92, Dur: 904s ???
 TimeLngth: 905.18s, TimeInt: 26ms (37.6pps)
 TimeCor=-13.0s, PPS(min,max,med): 37,38,38
 Timeint/DSPdiff(mn,min,mx):26,26,27/26,26,27
 Prof: 385 to 34390, NumProf(r/t): 15430/34005
 ProcTime/Recs: 19:32:46-19:39:36/18575-34004
 ADacqtime: 25ms; DRate: 210.4KB/s; Flags: 0, 0, 0
 Pulse: 275ns, IFfilt: 5.0MHz; ppPol: HH HV VV
 TxPol: HHVV, PRF: 20 10 20 10 kHz, Noiseflg:2,2
 Range: Delay 75m, Spacing 15m, Gates 100
 Ave. Pulses: 84, Rng/Prof Aspect@90m/s: 6.3

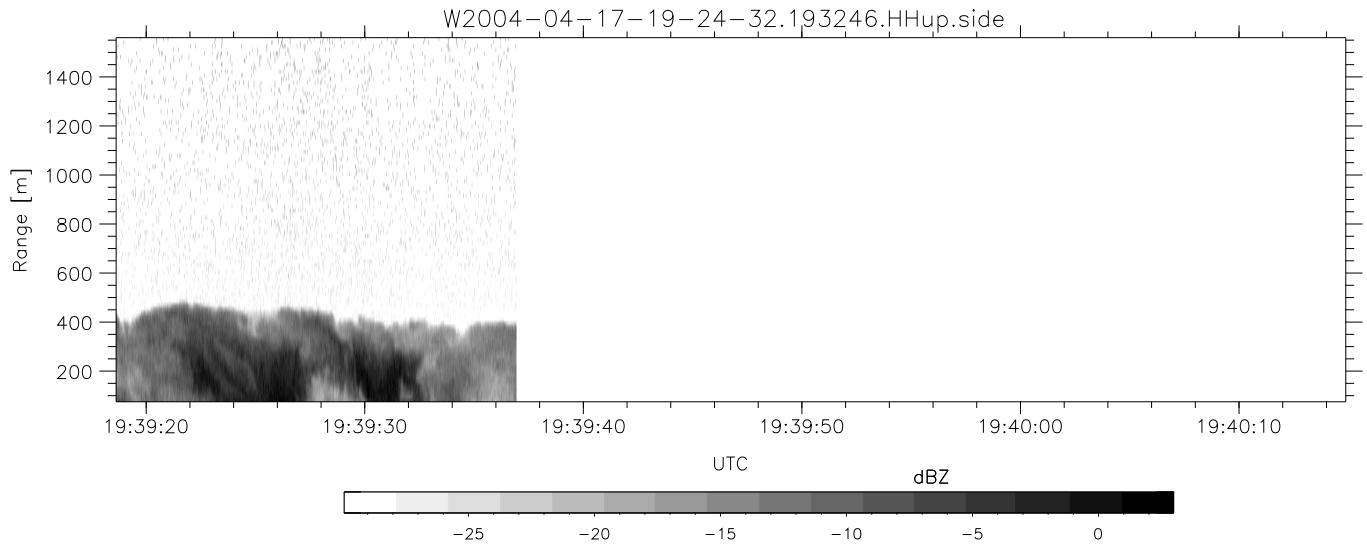
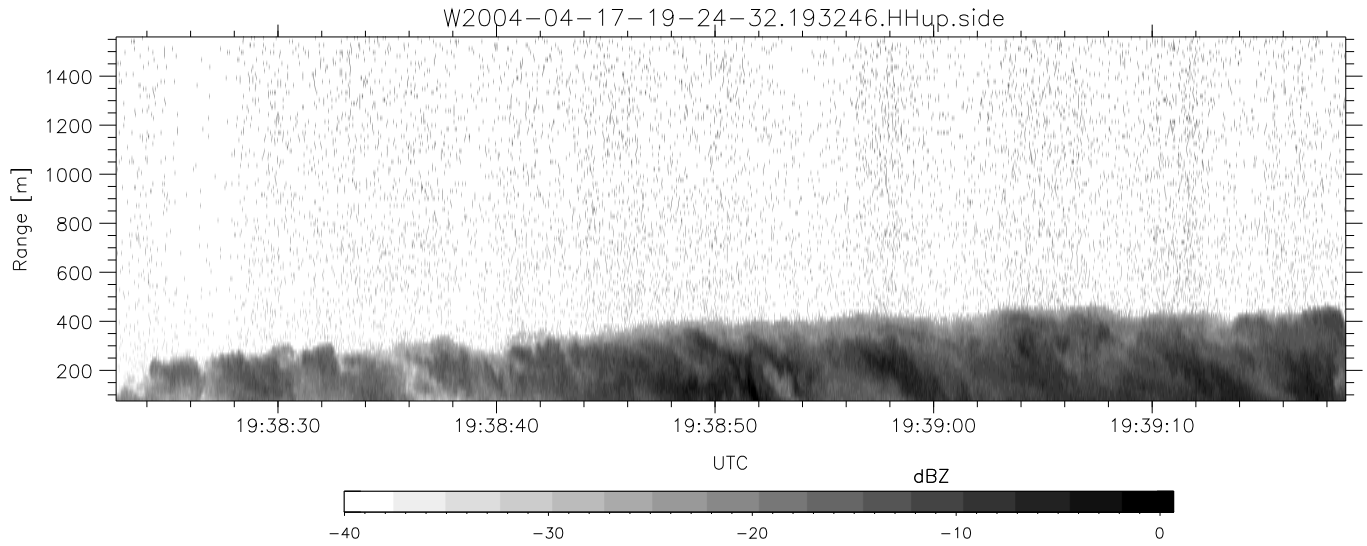
	Min	Max	Mean	Std	Varc%
hhN(dB)	-67.78	-64.44	-66.08	-76.13	9.9
vvN(dB)	-68.12	-64.52	-66.11	-76.07	10.1
hhL(dB)	-15.86	-8.32	-10.85	-16.57	26.7
vvL(dB)	1.20	6.00	4.99	-1.57	22.1
ppN(m/s)	-12.70	12.21	0.01	4.10	
ppT(m/s)	-100.3	96.46	0.10	32.36	
hh/vv(dB)	NaN	45.01	7.83	27.98	1035
vh/hh(dB)	NaN	-27.41	-34.57	-35.42	82.4
hv/vv(dB)	NaN	-3.47	-33.79	-21.93	1534
hnjmp(dB)			-0.16		
vnjmp(dB)			-0.17		



CIFEX 2004 Data (cal/250ns+2.5/100ns-3.5/500ns: 53.0,50.0)

W2004-04-17-19-24-32 - PPMAG4, IRIG:1/0/6
 UTC: 19:24:32.35 to 19:39:36.92, Dur: 904s ???
 TimeLngth: 905.18s, TimeInt: 26ms (37.6pps)
 TimeCor=-13.0s, PPS(min,max,med): 37,38,38
 Timeint/DSPdiff(mn,min,mx):26,26,27/26,26,27
 Prof: 385 to 34390, NumProf(r/t): 15430/34005
 ProcTime/Recs: 19:32:46-19:39:36/18575-34004
 ADacqtime: 25ms; DRate: 210.4KB/s; Flags: 0, 0, 0
 Pulse: 275ns, IFfilt: 5.0MHz; ppPol: HH HV VV
 TxPol: HHVV, PRF: 20 10 20 10 kHz, Noiseflg:2,2
 Range: Delay 75m, Spacing 15m, Gates 100
 Ave. Pulses: 84, Rng/Prof Aspect@90m/s: 6.3

	Min	Max	Mean	Std	Varc%
hhN (dB)	-67.78	-64.44	-66.08	-76.13	9.9
vvN (dB)	-68.12	-64.52	-66.11	-76.07	10.1
hhL (dB)	-15.86	-8.32	-10.85	-16.57	26.7
vvL (dB)	1.20	6.00	4.99	-1.57	22.1
ppN (m/s)	-12.70	12.21	0.01	4.10	
ppT (m/s)	-100.3	96.46	0.10	32.36	
hh/vv (dB)	NaN	45.01	7.83	27.98	1035
vh/hh (dB)	NaN	-27.41	-34.57	-35.42	82.4
hv/vv (dB)	NaN	-3.47	-33.79	-21.93	1534
hnjmp (dB)			-0.16		
vnjmp (dB)			-0.17		



CIFEX 2004 Data (cal/250ns+2.5/100ns-3.5/500ns: 53.0,50.0)

W2004-04-17-19-24-32 - PPMAG4, IRIG:1/0/6
 UTC: 19:24:32.35 to 19:39:36.92, Dur: 904s ???
 TimeLngth: 905.18s, TimeInt: 26ms (37.6pps)
 TimeCor=-13.0s, PPS(min,max,med): 37,38,38
 Timeint/DSPdiff(mn,min,mx):26,26,27/26,26,27
 Prof: 385 to 34390, NumProf(r/t): 15430/34005
 ProcTime/Recs: 19:32:46-19:39:36/18575-34004
 ADacqtime: 25ms; DRate: 210.4KB/s; Flags: 0, 0, 0
 Pulse: 275ns, IFfilt: 5.0MHz; ppPol: HH HV VV
 TxPol: HHVV, PRF: 20 10 20 10 kHz, Noiseflg:2,2
 Range: Delay 75m, Spacing 15m, Gates 100
 Ave. Pulses: 84, Rng/Prof Aspect@90m/s: 6.3

	Min	Max	Mean	Std	Varc%
hhN(dB)	-67.78	-64.44	-66.08	-76.13	9.9
vvN(dB)	-68.12	-64.52	-66.11	-76.07	10.1
hhL(dB)	-15.86	-8.32	-10.85	-16.57	26.7
vvL(dB)	1.20	6.00	4.99	-1.57	22.1
ppN(m/s)	-12.70	12.21	0.01	4.10	
ppT(m/s)	-100.3	96.46	0.10	32.36	
hh/vv(dB)	NaN	45.01	7.83	27.98	1035
vh/hh(dB)	NaN	-27.41	-34.57	-35.42	82.4
hv/vv(dB)	NaN	-3.47	-33.79	-21.93	1534
hnjmp(dB)			-0.16		
vnjmp(dB)			-0.17		