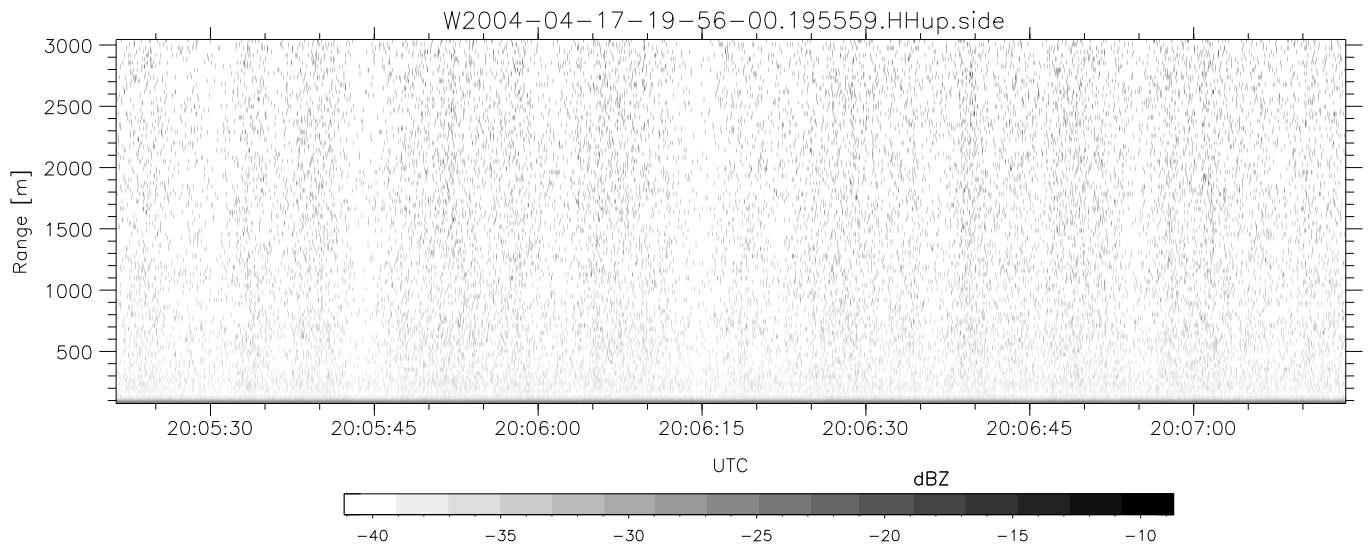
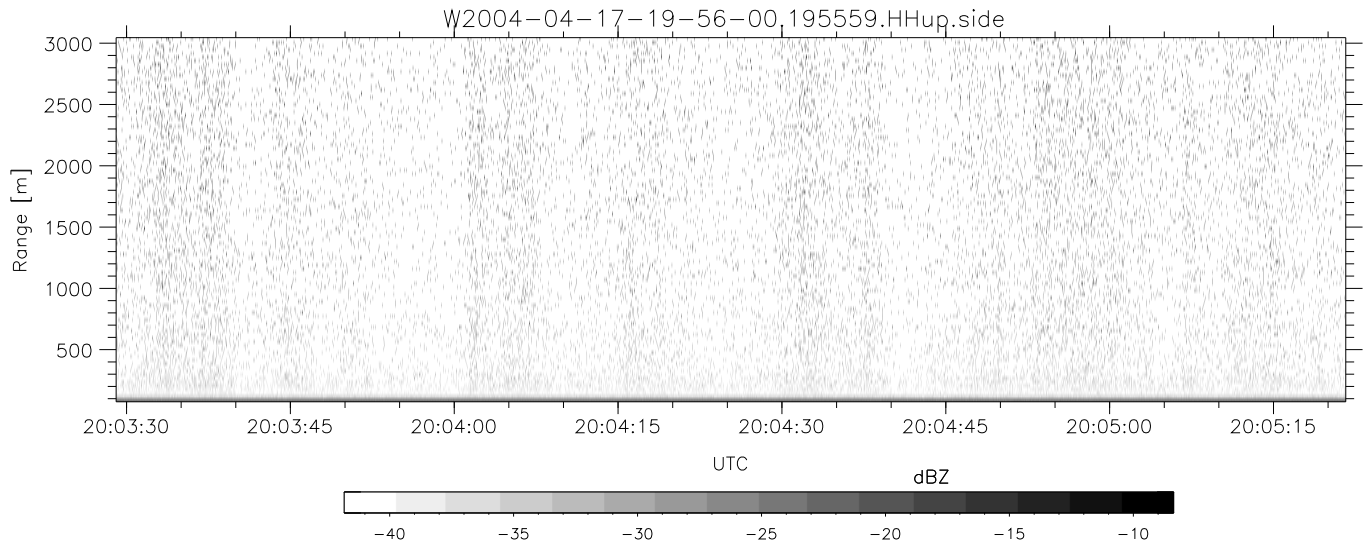
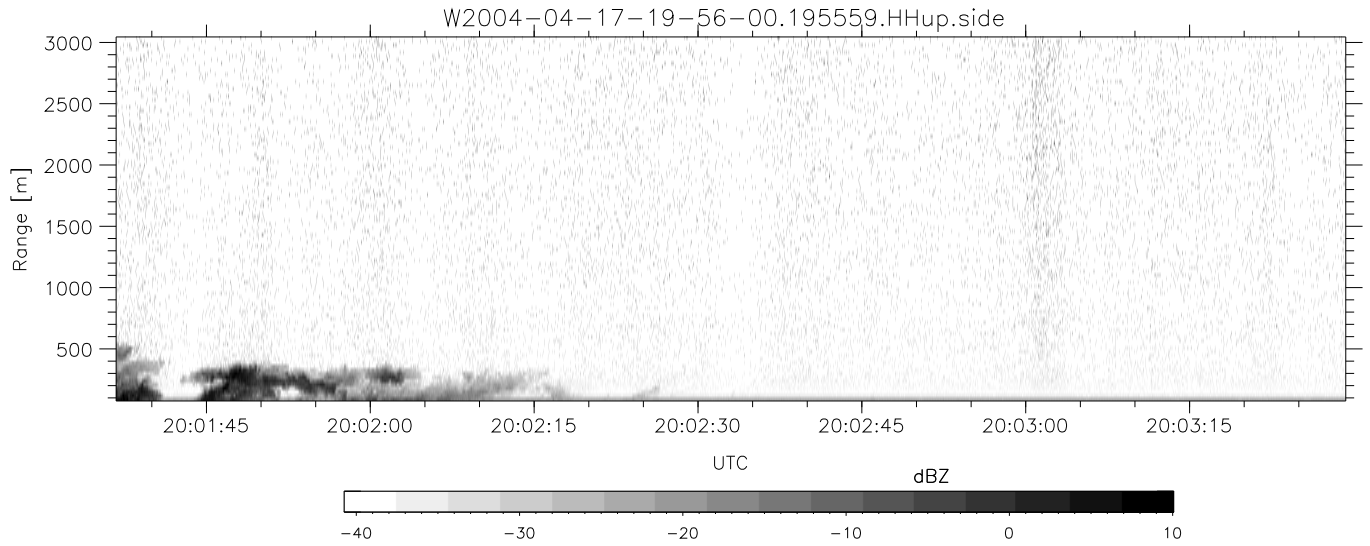


CIFEX 2004 Data (cal/250ns+2.5/100ns-3.5/500ns: 53.0,50.0)

W2004-04-17-19-56-00 - PPMAG4, IRIG:1/0/6
 UTC: 19:55:59.84 to 20:22:35.25, Dur: 1596s
 TimeLngth: 1595.39s, TimeInt: 28ms (35.4pps)
 TimeCor=-13.0s, PPS(min,max,med): 35,36,35
 Timeint/DSPdiff(mn,min,mx):28,28,40/28,28,28
 Prof: 250 to 56789, NumProf(r/t): 35142/56539
 ProcTime/Recs: 19:55:59-20:12:31/0-35141
 ADacqtime: 25ms; DRate: 198.4KB/s; Flags: 0, 0, 0
 Pulse: 275ns, IFilt: 5.0MHz; ppPol: HH HV VV
 TxPol: HHVV, PRF: 20 10 20 10 kHz, NoiseFlg:2,3
 Range: Delay 75m, Spacing 30m, Gates 100
 Ave. Pulses: 84, Rng/Prof Aspect@90m/s: 11.8

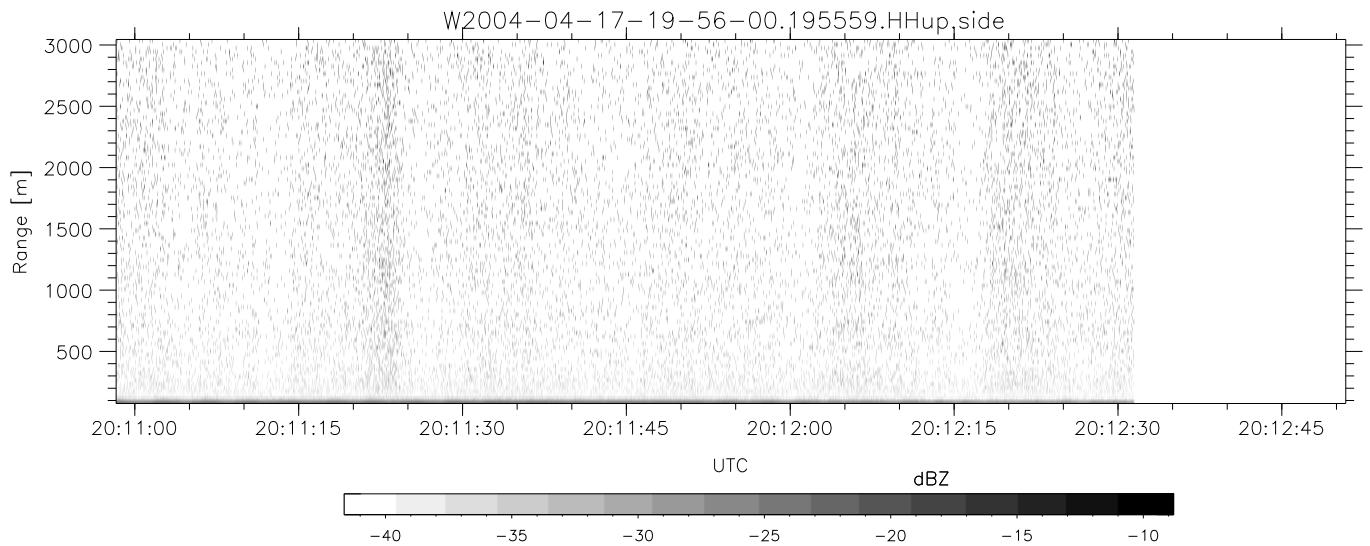
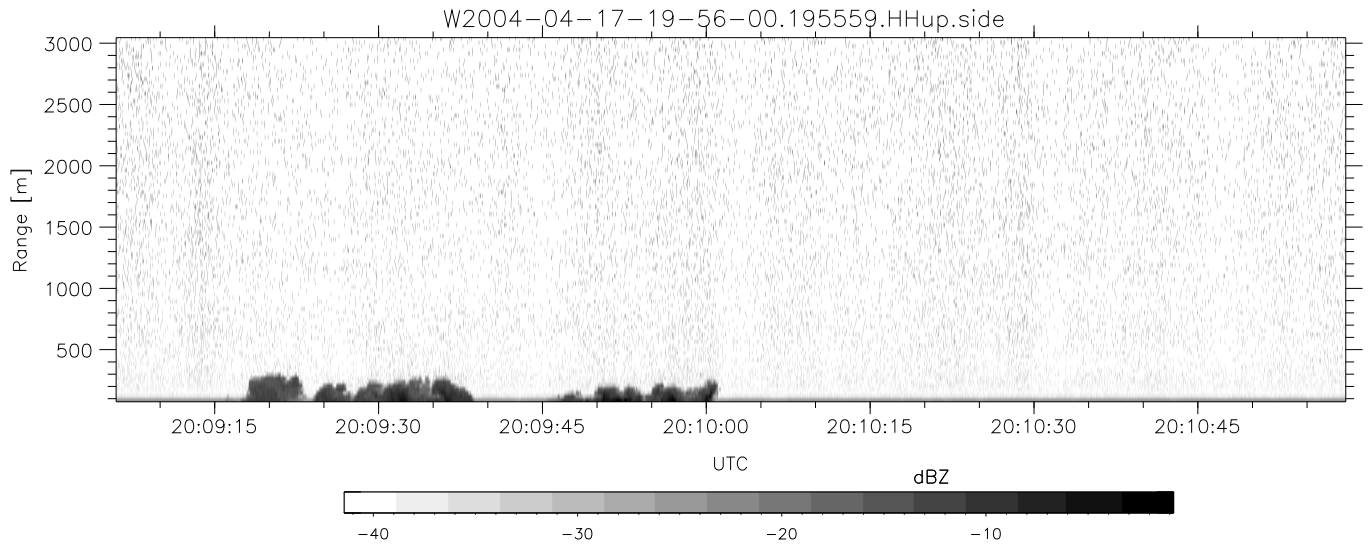
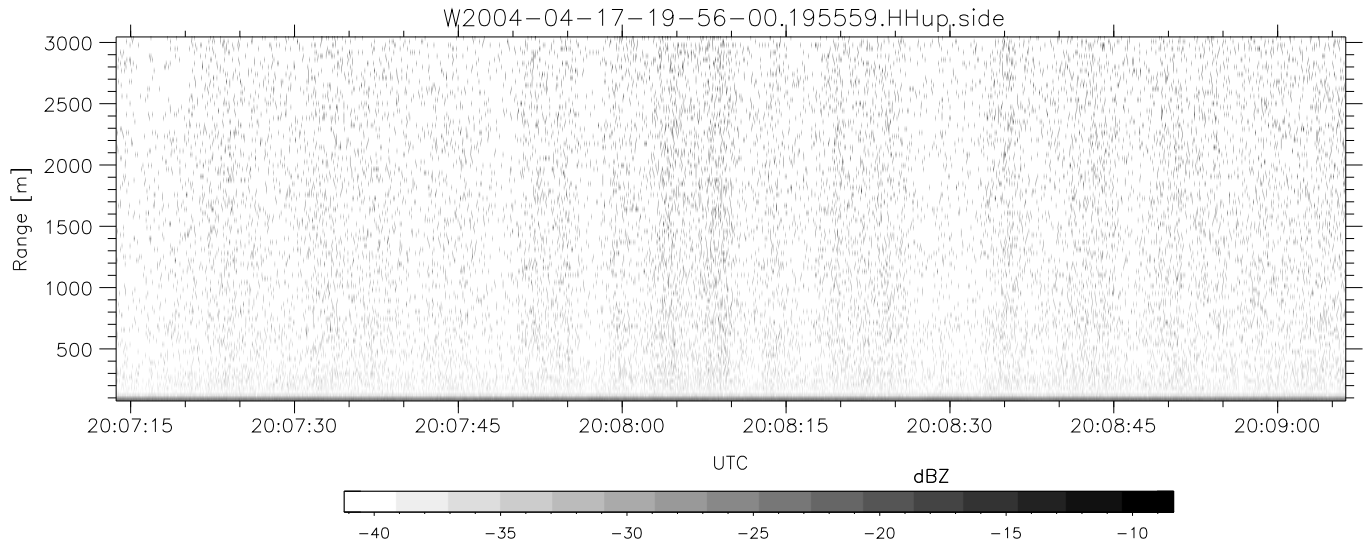
	Min	Max	Mean	Std	Varc%
hhN(dB)	-68.05	-64.56	-66.15	-76.20	9.9
vvN(dB)	-68.14	-64.44	-66.16	-75.97	10.4
hhL(dB)	-6.72	2.41	0.62	-7.37	15.9
vvL(dB)	-14.35	2.87	-1.84	-7.64	26.3
ppN(m/s)	-12.54	12.45	-0.00	4.14	
ppT(m/s)	-99.03	98.36	-0.02	32.68	
hh/vv(dB)	-37.45	8.32	-7.82	-4.46	216.
vh/hh(dB)	NaN	-25.26	-36.02	-35.77	105.
hv/vv(dB)	NaN	-34.56	-50.46	-43.80	463.
hnjmp(dB)			-0.16		
vnjmp(dB)			-0.16		



CIFEX 2004 Data (cal/250ns+2.5/100ns-3.5/500ns: 53.0,50.0)

W2004-04-17-19-56-00 - PPMAG4, IRIG:1/0/6
 UTC: 19:55:59.84 to 20:22:35.25, Dur: 1596s
 TimeLngth: 1595.39s, TimeInt: 28ms (35.4pps)
 TimeCor=-13.0s, PPS(min,max,med): 35,36,35
 Timeint/DSPdiff(mn,min,mx):28,28,40/28,28,28
 Prof: 250 to 56789, NumProf(r/t): 35142/56539
 ProcTime/Recs: 19:55:59-20:12:31/0-35141
 ADacqtime: 25ms; DRate: 198.4KB/s; Flags: 0, 0, 0
 Pulse: 275ns, IFilt: 5.0MHz; ppPol: HH HV VV
 TxPol: HHVV, PRF: 20 10 20 10 kHz, NoiseFlg:2,3
 Range: Delay 75m, Spacing 30m, Gates 100
 Ave. Pulses: 84, Rng/Prof Aspect@90m/s: 11.8

	Min	Max	Mean	Std	Varc%
hhN(dB)	-68.05	-64.56	-66.15	-76.20	9.9
vvN(dB)	-68.14	-64.44	-66.16	-75.97	10.4
hhL(dB)	-6.72	2.41	0.62	-7.37	15.9
vvL(dB)	-14.35	2.87	-1.84	-7.64	26.3
ppN(m/s)	-12.54	12.45	-0.00	4.14	
ppT(m/s)	-99.03	98.36	-0.02	32.68	
hh/vv(dB)	-37.45	8.32	-7.82	-4.46	216.
vh/hh(dB)	NaN	-25.26	-36.02	-35.77	105.
hv/vv(dB)	NaN	-34.56	-50.46	-43.80	463.
hnjmp(dB)			-0.16		
vnjmp(dB)			-0.16		



CIFEX 2004 Data (cal/250ns+2.5/100ns-3.5/500ns: 53.0,50.0)

W2004-04-17-19-56-00 - PPMAG4, IRIG:1/0/6
 UTC: 19:55:59.84 to 20:22:35.25, Dur: 1596s
 TimeLngth: 1595.39s, TimeInt: 28ms (35.4pps)
 TimeCor=-13.0s, PPS(min,max,med): 35,36,35
 Timeint/DSPdiff(mn,min,mx):28,28,40/28,28,28
 Prof: 250 to 56789, NumProf(r/t): 35142/56539
 ProcTime/Recs: 19:55:59-20:12:31/0-35141
 ADacqtime: 25ms; DRate: 198.4KB/s; Flags: 0, 0, 0
 Pulse: 275ns, IFilt: 5.0MHz; ppPol: HH HV VV
 TxPol: HHVV, PRF: 20 10 20 10 kHz, NoiseFlg:2,3
 Range: Delay 75m, Spacing 30m, Gates 100
 Ave. Pulses: 84, Rng/Prof Aspect@90m/s: 11.8

	Min	Max	Mean	Std	Varc%
hhN (dB)	-68.05	-64.56	-66.15	-76.20	9.9
vvN (dB)	-68.14	-64.44	-66.16	-75.97	10.4
hhL (dB)	-6.72	2.41	0.62	-7.37	15.9
vvL (dB)	-14.35	2.87	-1.84	-7.64	26.3
ppN (m/s)	-12.54	12.45	-0.00	4.14	
ppT (m/s)	-99.03	98.36	-0.02	32.68	
hh/vv (dB)	-37.45	8.32	-7.82	-4.46	216.
vh/hh (dB)	NaN	-25.26	-36.02	-35.77	105.
hv/vv (dB)	NaN	-34.56	-50.46	-43.80	463.
hnjmp (dB)			-0.16		
vnjmp (dB)			-0.16		